

GUM BALL MACHINE- 9"

Model 92336

GUM BALL MACHINE w/STAND 15"

Model 92337

ASSEMBLY INSTRUCTIONS



3491 Mission Oaks Blvd., Camarillo, CA 93011

Visit our Web site at <http://www.harborfreight.com>

Copyright © 2004 by Harbor Freight Tools®. All rights reserved. No portion of this manual or any artwork contained herein may be reproduced in any shape or form without the express written consent of Harbor Freight Tools.

For technical questions and replacement parts, please call 1-800-444-3353

Specifications for Gumball Machine - 9" SKU92336

Construction	Heavy Duty Cast Metal with a Glass Globe-Non Toxic Paint, Red
Overall Dimensions	9" H x 4" W
Gum Capacity	8 oz. Gumballs (not included)
Dim. of Glass Globe	4-1/2" H Dia. x 4-1/4" H
Weight	1.4 Lbs

Specifications for Gumball Machine w/Stand - 15" SKU92337

Construction	Heavy Duty Cast Metal with a Glass Globe-Non Toxic Paint, Red
Stand	Heavy Duty Cast Metal Antique Style -Non Toxic Paint, Black
Stand Height	23" H
Gumball Overall Dim.	27-1/2" H x 4" W
Gum Capacity	62 oz. Gumballs (not included)
Dim. of Glass Globe	7-1/2" H Dia. x 6-5/8" H
Weight	16.5 Lbs

Save This Manual

You will need the manual for the safety warnings and precautions, assembly instructions, operating and maintenance procedures, parts list and diagram. Keep your invoice with this manual. Write the invoice number on the inside of the front cover. Keep the manual and invoice in a safe and dry place for future reference.

Safety Warnings and Precautions

WARNING: When using product, basic safety precautions should always be followed to reduce the risk of personal injury and damage to equipment.

Read all instructions before using this product!

1. **Keep work area clean.** Cluttered areas invite injuries.
2. **Locate in safe operating area.** Position the Gumball Machine in an unobstructed area. The 9" Machine fits well on a desk or shelf. The 15" Machine fits well in a corner or out of the traffic area and must be located on a flat, level floor surface.
3. **Check for damaged parts.** Before using any product, any part that appears damaged should be carefully checked to determine that it will perform its intended function. Check for any broken or damaged parts and any other conditions that may affect its operation. Replace or repair damaged or worn parts immediately.
4. **Replacement parts and accessories.** When servicing, use only identical replacement parts. Use of any other parts will void the warranty.
5. **Always check the assembled parts after assembling.** All connections should be tight and hardware tightened.

6. **Maintain products with care.** Keep Gumballs filled in globe. Empty coins out of lower portion when refilling to prevent over filling.
7. **Children should be supervised.** Letting a child operate the Gumball Machine is fun for all but caution should be observed. Allowing the child to dispense and chew more than one Gumball at one time could cause choking. Coins could be swallowed. Both the 9" and the 15" Gumball Machine on the Stand could be pulled over by the child, causing personal injury. It is best to supervise the operation of the Gumball Machine. Make sure children keep their hands clear of the dispensing area to avoid getting hands or fingers caught. Harbor Freight Tools is not responsible for injuries caused by this product.
8. **Caution when refilling Gumballs.** Avoid sharp edges on the inside of the cast metal base when disassembling and assembling this product. **Caution:** The Globe is made of glass. Set Carefully on the table or workbench and avoid accidentally hitting the glass or letting it roll off the counter.

Warning: The warnings, cautions, and instructions discussed in this instruction manual cannot cover all possible conditions and situations that may occur. It must be understood by the operator that common sense and caution are factors which cannot be built into this product, but must be supplied by the operator.

Unpacking

When unpacking the Gumball Machine, check to make sure that all parts are included as shown in the parts list. If any parts are missing or broken, please call Harbor Freight Tools at the number below. Thoroughly clean all parts with anti-bacterial soap and water before using. Be sure to thoroughly dry all parts before reassembling.

Operating Instructions

Filling Machine:

1. Works with all coins, pennies, nickels, dimes and quarters. Dispenses Gumballs, Peanuts, Jelly Beans, and more. To add Gumballs or other small objects to the Gumball Machine, you must first unscrew the Plug (1) at the top and remove the Cap (2). Pour Gumballs (not included) slowly into the Glass Globe (5). Reassemble the Cap (2) and Plug (1). **See Figure 1.**

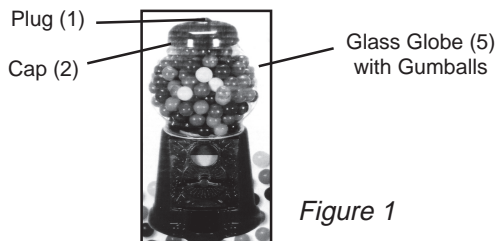


Figure 1

Removal of Coins:

1. Remove the Plug (1), Cap (2), Nut (3), Retaining Ring (4), Glass Globe (5), Gasket (6), Brush Plate (7), and Adjustable Wheel (8). Hold Body (9) firmly and lift up. You should be able to reach the coins. After removing the coins, carefully reassemble the above parts in the reverse order.

See illustration on Page 6 and Figure 2.



Figure 2

Varying the Amount of Gumballs to be Dispensed:

1. Loosen screws on the Adjustment Wheel (8). Adjust the size of the opening to the desired amount of Gumballs to be dispensed. Tighten screws and replace assembly. **See Figure 3.**

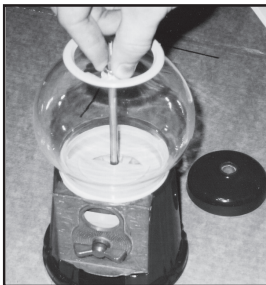


Figure 3

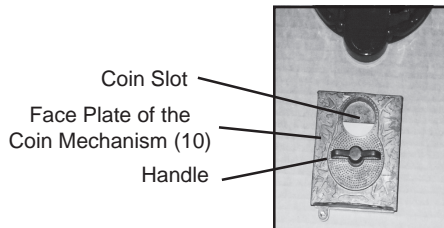


Figure 4

Operating the Machine:

1. Place the coin into the slot (**See Figure 4**) on the Face Plate of the Coin Mechanism (10). Turn the Handle one revolution. To dispense without using coins, with the Globe off, lift the Coin Mechanism (10) upward from its position. Turn over. Unscrew and remove the brass colored restraining arm on the back of the Coin Mechanism (10). Reassemble. **See Figures 4 & 5.**

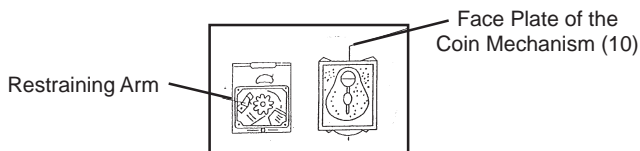


Figure 5

Attaching the Stand to SKU 92337:

1. Attach the four Feet (12) to Center Disk (13) with four Screws (14) and Nuts (15). **See Figure 6.**

2. Twist on Center Extension (16) to Center Disk (13). Twist Top Extension (17) to Center Extension (16) and then the top threaded end to the Base Plate (11) of the Gumball Machine. Tighten all hardware and connections. **See Figures 7 & 8.**

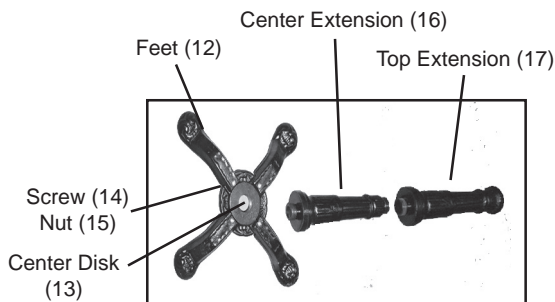


Figure 6

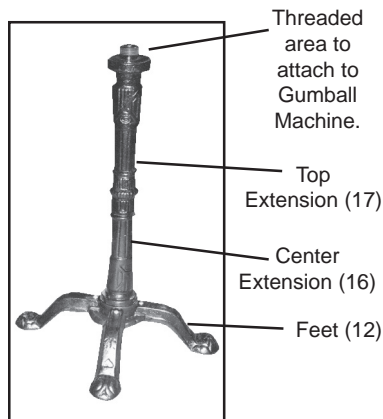


Figure 7

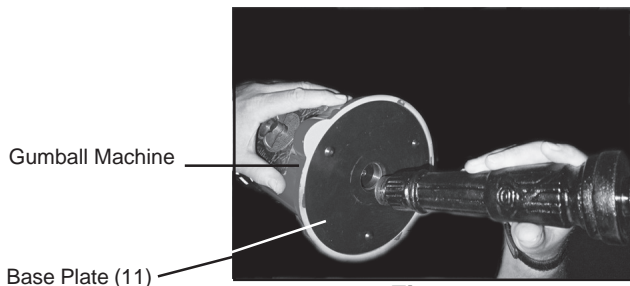


Figure 8

The 15" Gumball Machine with Stand fits well in a corner or out of the traffic area, and must be located on a flat, level floor surface.

Maintenance

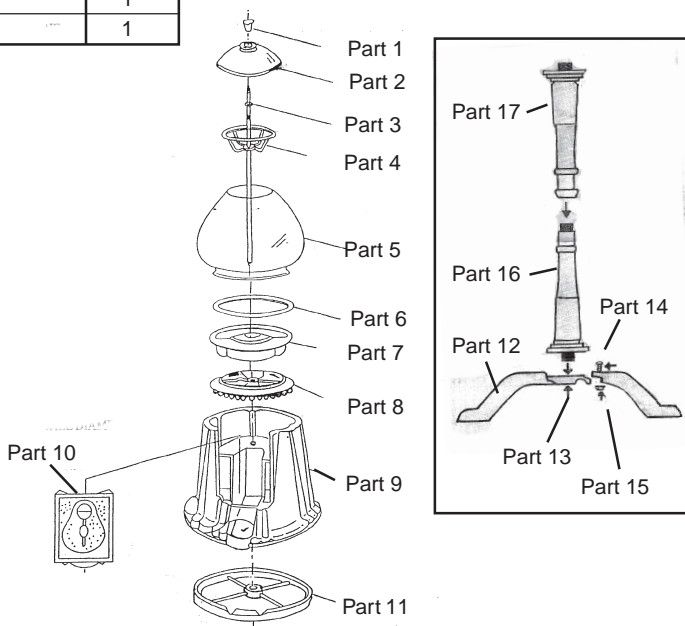
1. To remove dust, use a damp cloth. To remove grease or oil, use a detergent based cleaning solvent, rinse with damp cloth, and dry.

Parts List

Part #	Description	Qty.
1	Plug	1
2	Cap	1
3	Nut	1
4	Retaining Ring	1
5	Globe	1
6	Gasket	1
7	Brush Plate	1
8	Adjustable Wheel	1
9	Body	1
10	Coin Mechanism	1
11	Base Plate	1

Part #	Description	Qty.
12	Feet	4
13	Center Disk	1
14	Screw	4
15	Nut	4
16	Center Extension	1
17	Top Extension	1

Parts Identification



NOTE: Some parts are listed and shown for illustration purposes only and are not available individually as replacement parts.

PLEASE READ THE FOLLOWING CAREFULLY

THE MANUFACTURER AND/OR DISTRIBUTOR HAS PROVIDED THE PARTS DIAGRAM IN THIS MANUAL AS A REFERENCE TOOL ONLY. NEITHER THE MANUFACTURER NOR DISTRIBUTOR MAKES ANY REPRESENTATION OR WARRANTY OF ANY KIND TO THE BUYER THAT HE OR SHE IS QUALIFIED TO MAKE ANY REPAIRS TO THE PRODUCT OR THAT HE OR SHE IS QUALIFIED TO REPLACE ANY PARTS OF THE PRODUCT. IN FACT, THE MANUFACTURER AND/OR DISTRIBUTOR EXPRESSLY STATES THAT ALL REPAIRS AND PARTS REPLACEMENTS SHOULD BE UNDERTAKEN BY CERTIFIED AND LICENSED TECHNICIANS AND NOT BY THE BUYER. THE BUYER ASSUMES ALL RISK AND LIABILITY ARISING OUT OF HIS OR HER REPAIRS TO THE ORIGINAL PRODUCT OR REPLACEMENT PARTS THERETO, OR ARISING OUT OF HIS OR HER INSTALLATION OF REPLACEMENT PARTS THERETO.

NOTE: Some parts are listed and shown for illustration purposes only and are not available individually as replacement parts.

Free Manuals Download Website

<http://myh66.com>

<http://usermanuals.us>

<http://www.somanuals.com>

<http://www.4manuals.cc>

<http://www.manual-lib.com>

<http://www.404manual.com>

<http://www.luxmanual.com>

<http://aubethermostatmanual.com>

Golf course search by state

<http://golfingnear.com>

Email search by domain

<http://emailbydomain.com>

Auto manuals search

<http://auto.somanuals.com>

TV manuals search

<http://tv.somanuals.com>