

CHICAGO
Electric® Power Tools

ULTRASONIC CLEANER

Model 3305

CLEANING AND OPERATION INSTRUCTIONS



Visit our website at: <http://www.harborfreight.com>



**Read this material before using this product.
Failure to do so can result in serious injury.
SAVE THIS MANUAL.**

Copyright© 2008 by Harbor Freight Tools®. All rights reserved. No portion of this manual or any artwork contained herein may be reproduced in any shape or form without the express written consent of Harbor Freight Tools. Diagrams within this manual may not be drawn proportionally. Due to continuing improvements, actual product may differ slightly from the product described herein. Tools required for assembly and service may not be included.

For technical questions or replacement parts, please call 1-800-444-3353.

Revised Manual 09j

SAVE THIS MANUAL

Keep this manual for the safety warnings and precautions, assembly, operating, inspection, maintenance and cleaning procedures. Write the product's serial number in the back of the manual near the assembly diagram (or month and year of purchase if product has no number). Keep this manual and the receipt in a safe and dry place for future reference.

IMPORTANT SAFETY INSTRUCTIONS

In this manual, on the labeling, and all other information provided with this product:



This is the safety alert symbol. It is used to alert you to potential personal injury hazards. Obey all safety messages that follow this symbol to avoid possible injury or death.

DANGER

DANGER indicates a hazardous situation which, if not avoided, will result in death or serious injury.

WARNING

WARNING indicates a hazardous situation which, if not avoided, could result in death or serious injury.

CAUTION

CAUTION, used with the safety alert symbol, indicates a hazardous situation which, if not avoided, could result in minor or moderate injury.

NOTICE

NOTICE is used to address practices not related to personal injury.

CAUTION

CAUTION, without the safety alert symbol, is used to address practices not related to personal injury.


READ AND UNDERSTAND ALL INSTRUCTIONS

When using electrical appliances, safety precautions should always be followed including the following:

Work Area Safety

1. Do not use outdoors.
2. Close supervision is necessary when any appliance is used by or near children.
3. Do not let cord hang over edge of table or counter, or touch hot surfaces.
4. Do not place on or near a hot gas or electric burner, or in a heated oven.
5. Extreme caution must be used when moving an appliance.
6. Keep the work area well lit. Make sure there is adequate surrounding workspace. Keep the work area free of obstructions and other debris.

Electrical Safety

1.  To protect against electrical shock do not immerse cord, plugs, or the main unit in water or other liquid. Only the non-elec-

trical parts of the unit may be immersed for cleaning. Thoroughly clean and dry these parts prior to first use and before every subsequent use.

2. Unplug from outlet when not in use and before maintenance or cleaning.
3. Do not operate any appliance with a damaged cord or plug or after the appliance malfunctions or has been damaged in any manner. Return appliance to the nearest authorized service facility for examination, repair, or adjustment.
4. Do not use this product in a damp or wet location.
5. Do not clean with metal scouring pads. Metal pieces can break off the pads and touch electrical parts involving risk of shock.

Power Cord Safety

1. This Ultrasonic Cleaner is equipped with a 2-prong plug. A short power supply cord is provided to reduce risk of entanglement or tripping over a longer cord.
2. Longer extension cords are available and may be used if care is exercised in their use.
3. If a long extension cord is used,
 - a. the marked electrical rating of the (detachable power supply cord or) extension cord should be at least as great as the electrical rating of the appliance,
 - b. if the appliance is of the grounded type, the extension cord should be a grounding type 3-wire cord, and

- c. the longer cord should be arranged so that it will not drape over the counter top or tabletop where it can be pulled on by children or tripped over.

General and Specific Safety Precautions

1. DO NOT clean emeralds with any ultrasonic cleaner. All other jewelry is safe.
2. Do not place Ultrasonic Cleaner where it can fall or be pulled into a tub, sink or other free-standing container of water. Operate the product on a dry, level surface capable of supporting the Ultrasonic Cleaner and its contents.
3. Never immerse the Ultrasonic Cleaner in liquid.
4. Do not submerge non-waterproof objects in this Ultrasonic Cleaner.
5. Do not overfill the Cleaner. Use water only to the "MAX-" line when filling the Tank.
6. Do not clean multiple objects at one time. Using many objects in the tank at one time will cause them to bang against one another, damaging both the articles being cleaned and the Tank.
7. **WARNING: Use only lukewarm water. Do not use penetrating oils in the Ultrasonic Cleaner as they may damage the Cleaner and any materials being cleaned. Never use volatile solvents, gasoline, or other flammable liquids.**
8. Never leave the Ultrasonic Cleaner unattended when it is plugged into an

electrical outlet. Turn it off and unplug from the outlet before leaving.

9. Do not use this Ultrasonic Cleaner for other than intended use.
10. Maintain labels and nameplates on the appliance. These carry important safety information. If unreadable or missing, contact Harbor Freight Tools for a replacement.
11. Do not store anything other than the manufacturer's recommended accessories in this unit when not in use.
12. This product is not a toy. Keep it out of reach of children when children are not being closely supervised.
13. **WARNING:** Handling the cord on this product will expose you to lead, a chemical known to the State of California to cause cancer, and birth defects or other reproductive harm. Wash hands after handling. (California Health & Safety Code § 25249.5, *et seq.*)
14. People with pacemakers should consult their physician(s) before use. Electromagnetic fields in close proximity to heart pacemaker could cause pacemaker interference or pacemaker failure.
15. The warnings, precautions, and instructions discussed in this instruction manual cannot cover all possible conditions and situations that may occur. It must be understood by the operator that common sense and caution are factors which cannot be built into this product, but must be supplied by the operator.



**SAVE THESE
INSTRUCTIONS.**

SPECIFICATIONS

Construction	Tank: Stainless Steel Case: Polystyrene
Tank Capacity	1 Pint (600 ml)
Electrical Requirements	120 Volts AC/60 Hz/35W
Plug	2-Prong

HOUSEHOLD USE ONLY

UNPACKING

When unpacking, check to make sure that the item is intact and undamaged. If any parts are missing or broken, please call Harbor Freight Tools at the number shown on the cover of this manual as soon as possible.

CLEANING



Read the **ENTIRE IMPORTANT SAFEGUARDS** section at the beginning of this manual including all text under subheadings therein before set up or use of this product.

WARNING

TO PREVENT SERIOUS INJURY



FROM ACCIDENTAL OPERATION OR ELECTRIC SHOCK:

Before cleaning this Ultrasonic Cleaner, make sure the "OFF" Button is pushed off, the cord is unplugged, and the unit has cooled completely.

Do not immerse motor, cord, or plug in water or any other liquid.

1. Dry with a soft cloth. Wipe the housing with a soft clean cloth or sponge.
2. Allow unit to dry completely before use.

ASSEMBLY

NOTE: No assembly is required for this Ultrasonic Cleaner.

OPERATION



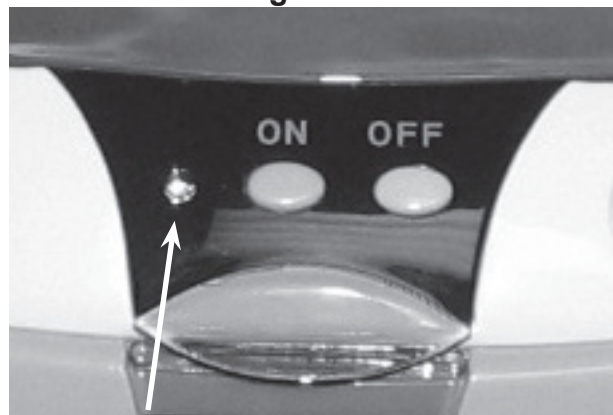
Read the **ENTIRE IMPORTANT SAFEGUARDS** section at the beginning of this manual including all text under subheadings therein before set up or use of this product.

1. Clean the appliance before each use by wiping the interior and exterior with a clean, soft cloth.
2. **NOTE: FAILURE TO FILL THE ULTRASONIC CLEANER WITH WATER OR A NON-CORROSIVE CLEANING MATERIAL BEFORE USING WILL SEVERELY DAMAGE IT AND VOID THE WARRANTY.**

Using the Ultrasonic Cleaner

1. Place the Ultrasonic Cleaner on a counter top or table capable of holding both the Cleaner and it's contents.
2. Fill the tank with water.
3. Put the articles in the plastic basket and place them in the tank. Ensure the water level below the "Max-" line.
4. Plug in the Ultrasonic Cleaner into a 120V outlet. The inner blue light will turn on.
5. Press the "ON" button to start cleaning, the Light (red) will go on on. See Figure 1.

Figure 1



Light (red)

6. 3 minutes later, the item is finished cleaning. The Cleaner will stop automatically. The light will go off.

7. On some occasions the initial cleaning will not be adequate. Press the "ON" Button to restart the cycle.
8. You may pause the cycle at any time by pressing the "OFF" Button.
9. When finished using the Ultrasonic Cleaner, unplug it from the wall outlet, empty the Tank, wipe down and store away from children.

INSPECTION AND MAINTENANCE

⚠ WARNING TO PREVENT
SERIOUS INJURY
FROM ACCIDENTAL
OPERATION OR ELECTRIC
SHOCK:
Before appliance inspection
or maintenance, make sure
the appliance's switch is
turned off, the cord is
unplugged, and the unit has
cooled completely. If
abnormal noise or vibration
occurs, have the problem
corrected before further use.

1. BEFORE EACH USE, inspect the general condition of the Ultrasonic Cleaner. Check for cracked or broken parts and/or any other condition that may affect its safe operation.
2. After each use, clean the Ultrasonic Cleaner's water tank with a clean, damp cloth. Remove any oil and/or residue. NEVER clean with flammable or corrosive liquids.

Troubleshooting

Problem	Possible Causes	Likely Solutions
Cleaner will not start	1. No power at outlet. 2. Cord not connected.	1. Check power at outlet. 2. Check that cord is plugged in.



Follow all safety precautions whenever diagnosing or servicing the appliance. Disconnect power supply before service.

PLEASE READ THE FOLLOWING CAREFULLY

THE MANUFACTURER AND/OR DISTRIBUTOR HAS PROVIDED THE PARTS LIST AND ASSEMBLY DIAGRAM IN THIS MANUAL AS A REFERENCE TOOL ONLY. NEITHER THE MANUFACTURER OR DISTRIBUTOR MAKES ANY REPRESENTATION OR WARRANTY OF ANY KIND TO THE BUYER THAT HE OR SHE IS QUALIFIED TO MAKE ANY REPAIRS TO THE PRODUCT, OR THAT HE OR SHE IS QUALIFIED TO REPLACE ANY PARTS OF THE PRODUCT. IN FACT, THE MANUFACTURER AND/OR DISTRIBUTOR EXPRESSLY STATES THAT ALL REPAIRS AND PARTS REPLACEMENTS SHOULD BE UNDERTAKEN BY CERTIFIED AND LICENSED TECHNICIANS, AND NOT BY THE BUYER. THE BUYER ASSUMES ALL RISK AND LIABILITY ARISING OUT OF HIS OR HER REPAIRS TO THE ORIGINAL PRODUCT OR REPLACEMENT PARTS THERETO, OR ARISING OUT OF HIS OR HER INSTALLATION OF REPLACEMENT PARTS THERETO.

Record Product's Serial Number Here: _____

Note: If product has no serial number, record month and year of purchase instead.

Note: Some parts are listed and shown for illustration purposes only, and are not available individually as replacement parts.

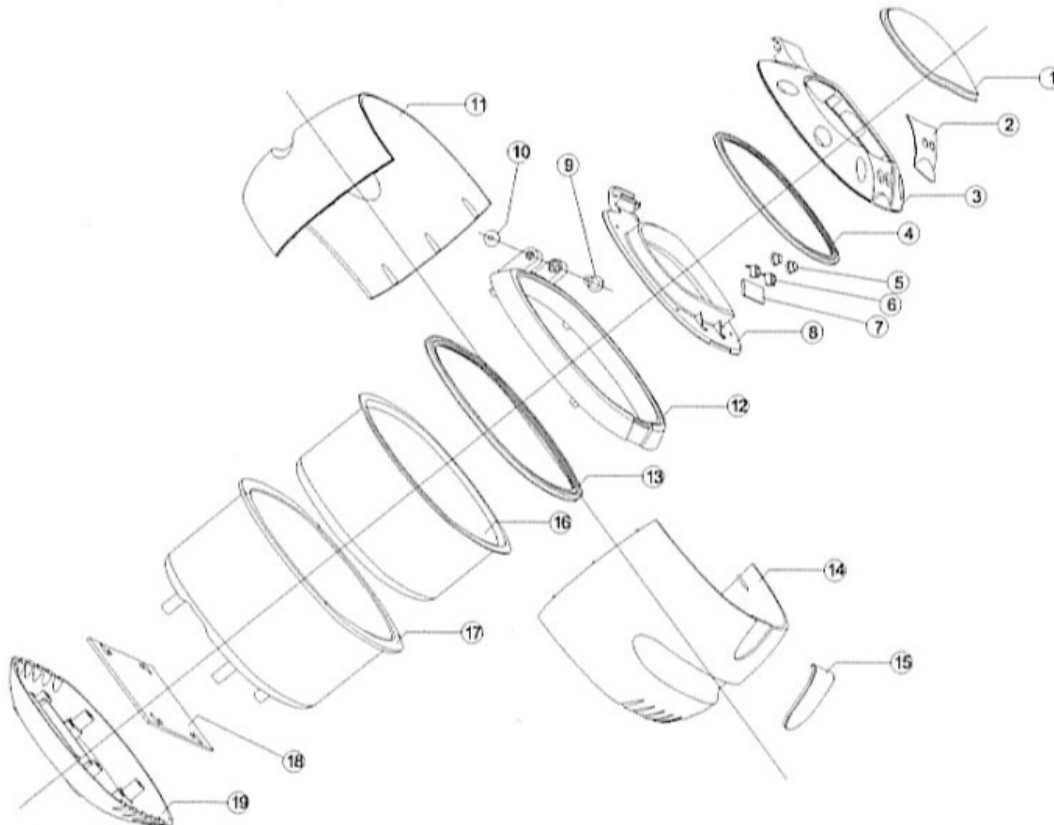
PARTS LIST

Part	Description	Q'ty
1	Transparant Cover	1
2	Button Panel	1
3	Lid	1
4	Silicone Sealing Ring	1
5	Buttons	2
6	On/Off Button Covers	2
7	Panel Cover	1
8	Inside Lid	1
9	Long Dowel	1
10	Short Dowel	1
11	Back Housing	1

PARTS LIST

Part	Description	Q'ty
12	Press Cover	1
13	Tank Sealing Ring	1
14	Front Housing	1
15	Decorate Cover	1
16	Tank	1
17	Inner Basket	1
18	Panel	1
19	Bottom Housing	1
20	Transducer	1
21	Power Cord	1

ASSEMBLY DIAGRAM



Please Note: Transducer (20)
and Power Cord and Plug
(21) not shown.

LIMITED 90 DAY WARRANTY

Harbor Freight Tools Co. makes every effort to assure that its products meet high quality and durability standards, and warrants to the original purchaser that this product is free from defects in materials and workmanship for the period of 90 days from the date of purchase. This warranty does not apply to damage due directly or indirectly, to misuse, abuse, negligence or accidents, repairs or alterations outside our facilities, criminal activity, improper installation, normal wear and tear, or to lack of maintenance. We shall in no event be liable for death, injuries to persons or property, or for incidental, contingent, special or consequential damages arising from the use of our product. Some states do not allow the exclusion or limitation of incidental or consequential damages, so the above limitation of exclusion may not apply to you. THIS WARRANTY IS EXPRESSLY IN LIEU OF ALL OTHER WARRANTIES, EXPRESS OR IMPLIED, INCLUDING THE WARRANTIES OF MERCHANTABILITY AND FITNESS.

To take advantage of this warranty, the product or part must be returned to us with transportation charges prepaid. Proof of purchase date and an explanation of the complaint must accompany the merchandise. If our inspection verifies the defect, we will either repair or replace the product at our election or we may elect to refund the purchase price if we cannot readily and quickly provide you with a replacement. We will return repaired products at our expense, but if we determine there is no defect, or that the defect resulted from causes not within the scope of our warranty, then you must bear the cost of returning the product.

This warranty gives you specific legal rights and you may also have other rights which vary from state to state.

3491 Mission Oaks Blvd. • PO Box 6009 • Camarillo, CA 93011 • (800) 444-3353

Free Manuals Download Website

<http://myh66.com>

<http://usermanuals.us>

<http://www.somanuals.com>

<http://www.4manuals.cc>

<http://www.manual-lib.com>

<http://www.404manual.com>

<http://www.luxmanual.com>

<http://aubethermostatmanual.com>

Golf course search by state

<http://golfingnear.com>

Email search by domain

<http://emailbydomain.com>

Auto manuals search

<http://auto.somanuals.com>

TV manuals search

<http://tv.somanuals.com>