

WALKER/STROLLER WITH HAND BRAKE

Model 02969

ASSEMBLY AND OPERATING INSTRUCTIONS



3491 Mission Oaks Blvd., Camarillo, CA 93011

Visit our Web site at <http://www.harborfreight.com>

Copyright © 2003 by Harbor Freight Tools®. All rights reserved. No portion of this manual or any artwork contained herein may be reproduced in any shape or form without the express written consent of Harbor Freight Tools.

For technical questions and replacement parts, please call 1-800-444-3353

Specifications

ITEM	DESCRIPTION
Min. Handle Height	32-3/8"
Max. Handle Height	36-3/4"
Width, Front	22-1/2" at Wheels
Width, Back	25-1/2" at Wheels
Seat Height	21-3/4" from Floor
Seat Dimensions	12" L x 12" W x 1-1/8" Thick
Wheel Dimensions	5" Diameter x 7/8" W
Weight Capacity	225 Lbs. Max. (dead weight at rest)
Accessories Included	Wire Basket, Removable Lining
Net Weight	15.10 Lbs.

Save This Manual

You will need the manual for the safety warnings and precautions, assembly instructions, operating and maintenance procedures, parts list and diagram. Keep your invoice with this manual. Write the invoice number on the inside of the front cover. Keep the manual and invoice in a safe and dry place for future reference.

Safety Warnings and Precautions

WARNING: When using this product, basic safety precautions should always be followed to reduce the risk of personal injury and damage to equipment.

Read all instructions before using this product!

1. **Observe external conditions.** Do not use this product in damp or wet locations. Don't expose to rain.
2. **Keep children away.** This product is not a toy. Children must never be allowed to play with, on, or around this product.
3. **Store idle equipment.** When not in use, product must be stored in a dry location to inhibit rust.
4. **Use the right product for the job.** There are certain applications for which this product was designed. It will do the job better and more safely at the rate for which it was intended. Do not modify this product and do not use this product for a purpose for which it was not intended.
5. **Dress properly.** Do not wear loose clothing or jewelry that can be caught in moving parts.
6. **Do not overreach.** Keep proper footing and balance at all times.

REV 03d

SKU 02969

For technical questions, please call 1-800-444-3353.

Page 2

Download from www.Somanuals.com. All Manuals Search And Download.

7. **Maintain product with care.** Keep product clean and lubricated for better and safer performance. Inspect periodically and, if any part appears broken or damaged, have it repaired by an authorized technician. The handles must be kept clean, dry, and free from oil and grease at all times.
8. **Stay alert.** Watch what you are doing, use common sense. Do not operate this product when you are tired.
9. **Check for damaged parts.** Before using any product, any part that appears damaged should be carefully checked to determine that it will operate properly and perform its intended function. Check for alignment and binding of moving parts; any broken parts or mounting fixtures; and any other condition that may affect proper operation. Any part that is damaged should be properly repaired or replaced by a qualified technician.
10. **Replacement parts and accessories.** When servicing, use only identical replacement parts. Use of any other parts will void the warranty. Only use accessories intended for use with this product.
11. **Do not operate if under the influence of alcohol or drugs.** Read warning labels on prescriptions to determine if your judgment or reflexes are impaired while taking drugs. If there is any doubt, do not operate the product.
12. **Maintenance.** For your safety, service and maintenance should be performed regularly by a qualified technician.

Special Warnings for this Product

1. Before use, be sure your Walker/Stroller is fully opened, the Seat is down completely, and the folding bar beneath the Seat is in the locked position.
2. Check that both Handles are at equal heights. If one is lower than the other, adjust accordingly. Apply gentle pressure to the Handles to test the stability of the Walker/Stroller before use.
3. Test Brakes thoroughly before use. The brake bar on the wheels will prevent the wheels from rolling, when the Brake is in the locked position (see Page 5, Hand Brake Operation). If the Wheels turn while Brakes are locked, have the Brakes adjusted by an authorized technician. Under no circumstances should you use this product if the Brakes do not lock properly.
4. Always put Brakes in the locked position before sitting on the Seat. Do not sit on the Seat unless you are on even, level ground.
5. Check tires periodically, and replace when worn.
6. **This product is not a cart or a wheel chair. Do not use it to push or carry people or objects. Do not load more than 25 Lbs. in the Basket.**

Warning: The warnings, cautions, and instructions discussed in this instruction manual cannot cover all possible conditions and situations that may occur. It must be understood by the operator that common sense and caution are factors which cannot be built into this product, but must be supplied by the operator.

Unpacking

When unpacking, check to make sure all parts listed on Page 6 are included.

If any parts are missing or broken, please call Harbor Freight Tools at the number on the cover of this manual.

Assembly

All parts numbered and listed refer to those in the Assembly Diagram and Parts List on Pages 5-6.

1. Attach the Backrest Bar [7] to the Front Frame [10] by depressing the two Brass Buttons [8] on the sides of the Backrest Bar, and sliding the Bar into the slots in the Back Frame as shown in Fig. A, right.
2. To attach the two Handles, first slide one of the Handrail Rods [3] into the Front Frame [10] as shown in the Assembly Diagram. Find a comfortable height for the Handle, then line up the holes in the Handrail Rod with one of the holes in the Front Frame. Secure in position using an M6 Screw [42], and Knob [5]. Repeat to attach the other Handle, making sure that both Handles are the same height.
3. Your Walker/Stroller is easily collapsible, when you want to take it in the car, on an airplane, or for other storage purposes. Simply remove the Basket [49] and the Backrest Bar, and pull up on the Folding Strap [51] as demonstrated at right in Fig. B. To unfold the Walker/Stroller, place all four of the Wheels [22] on the ground and push down on the Handles until the Folding Side Braces [38] are parallel to the ground and the Walker/Stroller is locked in the open position.

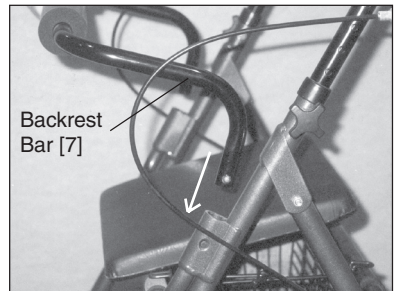


Fig. A, Attaching the Backrest Bar



Fig. B, Collapsing the Walker/Stroller

Hand Brake Operation

1. To slow down or stop temporarily, squeeze the Handgrip [1 & 52] and the Brake Loop [1A] together firmly.
2. To lock Wheels in position, push down on the Brake Loops until you hear a 'click' sound. See Fig. C.
3. To unlock Wheels, pull up on the Brake Loops as shown in Fig. D.



Fig. C, Wheels in locked position

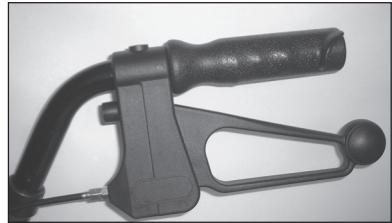
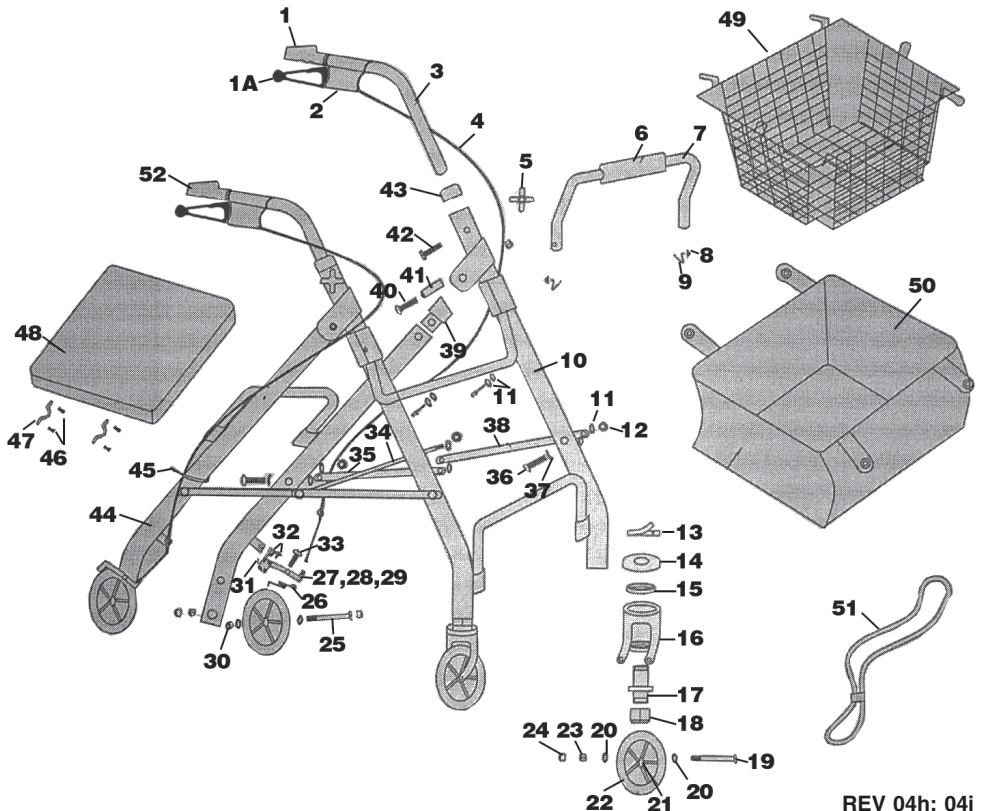


Fig. D, Wheels unlocked

Assembly Drawing



REV 04h; 04j

Parts List

ITEM	DESCRIPTION	QTY	ITEM	DESCRIPTION	QTY
1	Left Handgrip w/thumb rest	1	26	Screws (Left & Right)	1
1A	Brake Loop	2	27	Brake Piece	1
2	Control Plate	2	28	Control Piece (Left)	1
3	Handrail Rod	2	29	Control Piece (Right)	1
4	Braking Thread	2	30	Fixed Ring	2
5	Knob	2	31	M5 Defended Loose Nut	4
6	Low Density Foam	1	32	M5 Crossed Screw	4
7	Backrest Bar	1	33	Screws	2
8	8.15 Brass Button	2	34	Link Rod	1
9	1.6 Spring	2	35	L-Shape Joining	2
10	Front Frame	1	36	37 Crossed Screws	4
11	Plastic Washers	10	37	Arc Screws	6
12	M6 Defended Loose Nut	8	38	Folding Side Braces	2
13	Spring Mat	2	39	Slide Plug	2
14	Wheel Fork Bearing Cap	2	40	40 Crossed Screws	2
15	60012 Bearing	4	41	Brass Tube	2
16	Wheel Fork	2	42	M6 Screws	2
17	Screws	2	43	7/8" Collar	2
18	M12 Defended Loose Nut	2	44	Back Frame	1
19	M8 Screws	2	45	Plastic Tie	2
20	Washers	6	46	3/16" Screws	4
21	6082 Bearing	8	47	Clip	2
22	5" Bearing Wheel	4	48	Padded Seat	1
23	M8 Defended Loose Nut	6	49	Basket	1
24	Screw Cap	8	50	PVC Bag	1
25	M8 Screws	2	51	Folding Strap	1
			52	Right Handgrip w/thumb rest	1

NOTE: Some parts are listed and shown for illustration purposes only and are not available individually as replacement parts.

PLEASE READ THE FOLLOWING CAREFULLY

THE MANUFACTURER AND/OR DISTRIBUTOR HAS PROVIDED THE PARTS DIAGRAM IN THIS MANUAL AS A REFERENCE TOOL ONLY. NEITHER THE MANUFACTURER NOR DISTRIBUTOR MAKES ANY REPRESENTATION OR WARRANTY OF ANY KIND TO THE BUYER THAT HE OR SHE IS QUALIFIED TO MAKE ANY REPAIRS TO THE PRODUCT OR THAT HE OR SHE IS QUALIFIED TO REPLACE ANY PARTS OF THE PRODUCT. IN FACT, THE MANUFACTURER AND/OR DISTRIBUTOR EXPRESSLY STATES THAT ALL REPAIRS AND PARTS REPLACEMENTS SHOULD BE UNDERTAKEN BY CERTIFIED AND LICENSED TECHNICIANS AND NOT BY THE BUYER. THE BUYER ASSUMES ALL RISK AND LIABILITY ARISING OUT OF HIS OR HER REPAIRS TO THE ORIGINAL PRODUCT OR REPLACEMENT PARTS THERETO, OR ARISING OUT OF HIS OR HER INSTALLATION OF REPLACEMENT PARTS THERETO.

Free Manuals Download Website

<http://myh66.com>

<http://usermanuals.us>

<http://www.somanuals.com>

<http://www.4manuals.cc>

<http://www.manual-lib.com>

<http://www.404manual.com>

<http://www.luxmanual.com>

<http://aubethermostatmanual.com>

Golf course search by state

<http://golfingnear.com>

Email search by domain

<http://emailbydomain.com>

Auto manuals search

<http://auto.somanuals.com>

TV manuals search

<http://tv.somanuals.com>