



SEALER-15-1/2" ELECTRICAL IMPULSE

Model 43477

OPERATING INSTRUCTIONS



3491 Mission Oaks Blvd., Camarillo, CA 93011

Visit our Web site at <http://www.harborfreight.com>

Copyright © 2000 by Harbor Freight Tools. All rights reserved. No portion of this manual or any artwork contained herein may be reproduced in any shape or form without the express written consent of Harbor Freight Tools.

For technical questions please call 1-800-444-3353



SPECIFICATIONS

ITEM	DESCRIPTION
Construction	Cast Aluminum
Finish	Cream White Enamel
Net Weight	10.60 Lbs.
Overall Dimensions	15-1/2" H x 3-1/4" W x 21-1/4" L
Sealing Capacity	Up To 15-1/2" Wide
Sealing Materials	Polyethylene / Polypropylene Bags
Sealing Arm	Spring Loaded
Cord/Plug/Switch Rating	UL Approved
Cord Length	63"
Electrical Requirements	110-VOLT AC / 50-60 HZ / 800 WATTS
Timer	Adjustable
Accessories	Heat Element (Qty: 2) Teflon Cloth (Qty: 2)

SAVE THIS MANUAL

You will need the manual for the safety warnings and precautions, assembly, operating and maintenance procedures, Parts List and Diagram. Keep your invoice with this manual. Write the invoice number on the inside of the front cover. Keep the manual and invoice in a safe and dry place for future reference.

SAFETY WARNINGS AND PRECAUTIONS

1. **KEEP WORK AREA CLEAN AND DRY.** Cluttered, damp or wet work areas invite injuries.
2. **KEEP CHILDREN AWAY FROM WORK AREA.** Do not allow children to handle this product.
3. **STORE IDLE EQUIPMENT.** When not in use, tools must be stored in a dry location to inhibit rust. Always lock up tools and keep out of reach of children.
4. **DO NOT USE THIS PRODUCT IF UNDER THE INFLUENCE OF ALCOHOL OR DRUGS.** Read warning labels on prescriptions to determine if your judgment or reflexes are impaired while taking drugs. If there is any doubt, do not attempt to use this product.



5. **USE EYE PROTECTION.** Always wear ANSI approved impact safety glasses. The impact safety glasses are available from Harbor Freight Tools.
6. **DRESS SAFELY.** Do not wear loose clothing or jewelry as they can become caught in moving parts. Wear a protective hair covering to prevent long hair from becoming caught in the moving parts.
7. **DO NOT OVERREACH.** Keep proper footing and balance at all times.
8. **STAY ALERT.** Watch what you are doing at all times. Use common sense. Do not operate this product when you are tired or distracted from the job at hand. The warnings, cautions, and instructions discussed in this manual cannot cover all possible conditions and situations that may occur. It must be understood by the operator that common sense and caution are factors which cannot be built into this product, but must be supplied by the operator.
9. **OBSERVE WORK AREA CONDITIONS.** Do not use machines or power tools in damp or wet locations. Do not expose to rain. Keep work area well lighted. Do not use electrically powered tools in the presence of flammable gases or liquids. Do not submerge this product in any liquid.
10. **CHECK FOR DAMAGED PARTS.** Before using this product, carefully check that it will operate properly and perform its intended function. Check for damaged parts and any other conditions that may affect its operation. Replace or repair damaged or worn parts immediately.
11. **REPLACEMENT PARTS AND ACCESSORIES.** When servicing, use only identical replacement parts. Only use accessories intended for use with this product. Approved accessories are available from Harbor Freight Tools.
12. **MAINTAIN THIS PRODUCT WITH CARE.** Keep this product clean and dry, and moving parts lightly lubricated for better and safer performance. Inspect electrical cord periodically and, if damaged, have it repaired or replaced by an authorized technician. Keep handle dry, clean and free from oil, grease, and solvents.
13. **MAINTENANCE:** For your safety, service and maintenance should be performed regularly by a qualified technician
14. **USE THE RIGHT PRODUCT FOR THE RIGHT JOB.** There are certain applications for which this product was designed. Do not use this product for a purpose for which it was not intended

UNPACKING

When unpacking, check to make sure all parts shown on the Parts List (page 7) are included. If any parts are missing or broken, please call Harbor Freight Tools at the number shown on the cover of this manual as soon as possible.



OPERATING INSTRUCTIONS

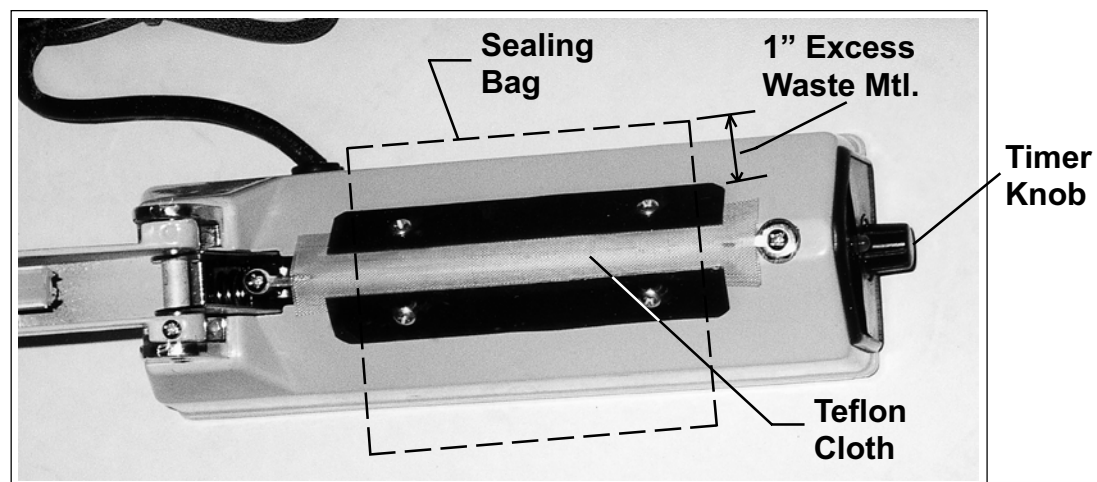
NOTE: All parts below refer to assembly diagram listed on page 8 of this manual.

1. Plug the 3-Prong Power Cord Plug (not shown in Assembly Illustration) of the unit into a grounded, 3-Hole Electrical Outlet.
2. Select the size, type, and thickness of the bag to be sealed (up to 12" wide. *Polyethylene*, under 0.06mm to 0.2mm; or *Polypropylene*, under 0.03mm to 0.08mm).
3. Make sure the Handle (part #36) is in the upward/open position.
4. Refer to the "Heat Adjustment Chart" (**shown below**) in order to set the Timer Knob (part #48) to the proper setting according to the size, type, and thickness of sealing bag selected.

HEAT ADJUSTMENT CHART

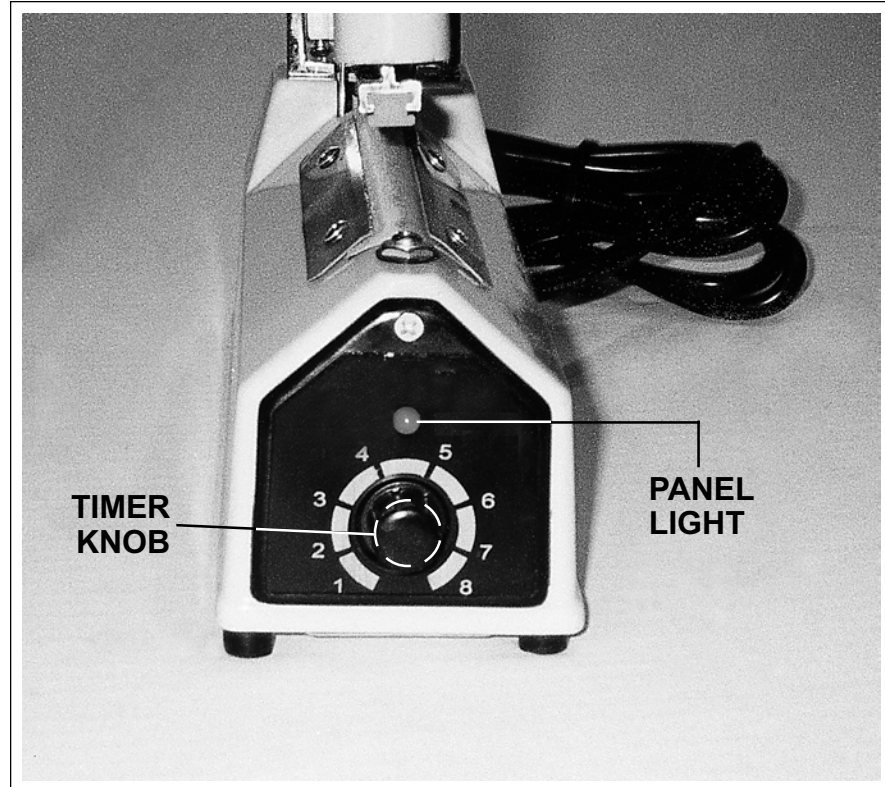
MATERIAL INDICATOR	POLYERTHYLENE	POLYPROFYLENE
1	UNDER 0.06 m/m	
2	UNDER 0.1 m/m	
3	UNDER 0.14 m/m	
4	UNDER 0.2 m/m	UNDER 0.03 m/m
5		UNDER 0.044 m/m
6		UNDER 0.06 m/m
7		UNDER 0.08 m/m

5. Fill the sealing bag to approximately 3/4 full with contents to be sealed and align the top edges of the bag.
6. Turn the Timer Knob clockwise to the desired heating time (1 to 8).
7. Position the aligned top edges of the sealing bag over the top ridge of the Teflon Cloth (part #25) and hold in place. (NOTE: Allow approximately 1" excess waste of sealing bag material as (**shown below**)).





8. Lower the Handle completely and hold in place. (NOTE: At this point the Panel Light (part #45) will illuminate, indicating the Heat Element (part #34) has automatically turned on - **see illustration below.**)



9. Continue holding the Handle in the downward position. When the desired heating time expires the Panel Light will automatically shut off, indicating the Heat Element has automatically shut off.
10. Hold the Handle in the downward position another 1-2 seconds, then lift the Handle completely in the upward/open position and remove the sealed bag.
11. If desired, you may trim the excess waste bag material at the top edge of the sealed bag with scissors.

Troubleshooting:

1. If the bead is broken along the sealed edge of the bag, this indicates the length of heating time is set too long. To shorten the heating time, turn the Timer Knob counterclockwise.
2. If the edge of the bag does not seal, this indicates the length of heating time is set too short. To lengthen the heating time turn the Timer Knob clockwise.



3. If the bag sticks to the Teflon Cloth of the Sealer, this indicates the Heat Element has not had sufficient time to cool. After the Panel Light automatically shuts off continue holding the Handle in the downward position for another 1-2 seconds, until the Heat Element completely cools, before removing the bag.

CLEANING AND MAINTENANCE

1. ALWAYS disconnect the unit's 3-Prong Electrical Cord Plug from the electrical outlet *prior* to performing any cleaning or maintenance on this product.
2. To replace the Teflon Cloth (part #25), remove the 3 screws along each top of the two Metal Plates (part #15). Remove the old Teflon Cloth and replace with the new Teflon Cloth. Then, reattach the screws along the top of the Metal Plate.
3. To replace the Heat Element (part #34), remove the 3 screws along each top of the two Metal Plates (part #15). Remove the Teflon Cloth. Remove the nut (part #40) and the screw (part #43) at each end of the Heat Element. Remove the old Heat Element and replace with a new Heat Element. Replace the Teflon Cloth. Then, reattach the screws along the top of the Metal Plate.
4. To clean, wipe unit with a clean, damp cloth. If necessary, use a mild detergent.
5. All major maintenance and repair operations should be performed by a qualified technician.

PLEASE READ THE FOLLOWING CAREFULLY

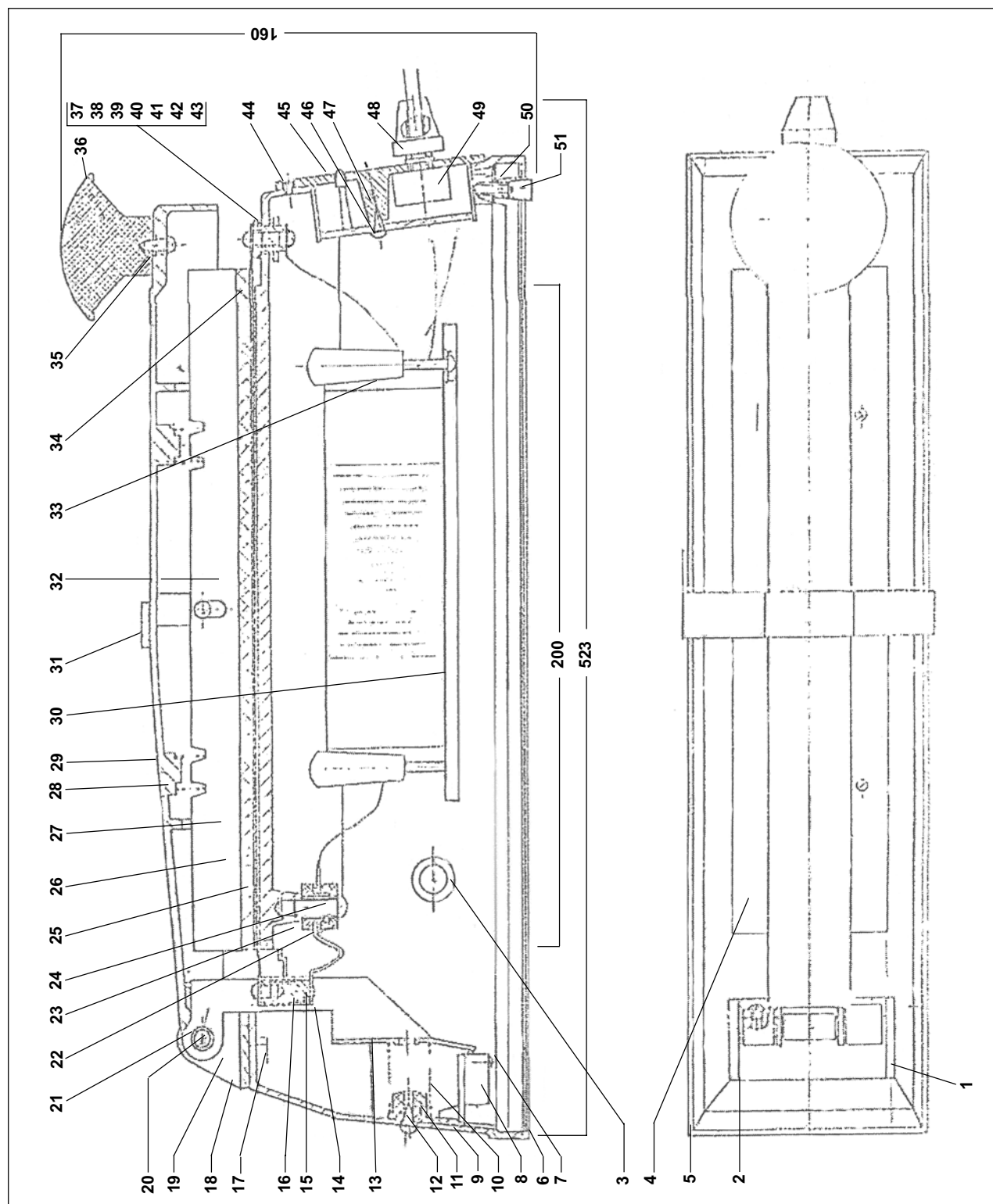
THE MANUFACTURER AND/OR DISTRIBUTOR HAS PROVIDED THE PARTS DIAGRAM IN THIS MANUAL AS A REFERENCE TOOL ONLY. NEITHER THE MANUFACTURER NOR DISTRIBUTOR MAKES ANY REPRESENTATION OR WARRANTY OF ANY KIND TO THE BUYER THAT HE OR SHE IS QUALIFIED TO MAKE ANY REPAIRS TO THE PRODUCT OR THAT HE OR SHE IS QUALIFIED TO REPLACE ANY PARTS OF THE PRODUCT. IN FACT, THE MANUFACTURER AND/OR DISTRIBUTOR EXPRESSLY STATES THAT ALL REPAIRS AND PARTS REPLACEMENTS SHOULD BE UNDERTAKEN BY CERTIFIED AND LICENSED TECHNICIANS AND NOT BY THE BUYER. THE BUYER ASSUMES ALL RISK AND LIABILITY ARISING OUT OF HIS OR HER REPAIRS TO THE ORIGINAL PRODUCT OR REPLACEMENT PARTS THERETO, OR ARISING OUT OF HIS OR HER INSTALLATION OF REPLACEMENT PARTS THERETO.

PARTS LIST

PART #	DESCRIPTION	QTY
1	Buckle	1
2	Screw	4
3	Screw	1
4	Teflon Presser	2
5	Conduit Tube	1
6	Base Plate	1
7	Screw	2
8	Micro Switch	1
9	Enclosure	1
10	Spring	1
11	Micro Switch Bearing	1
12	Screw	1
13	Hanger	1
14	Heat Element Shrapnel	1
15	Metal Plate	1
16	Heat Element Pillar Guard Tube	1
17	Bole	2
18	Screw	1
19	Bearing	1
20	Pivot	1
21	Locating Sleeve	1
22	Insulating Gasket	1
23	Insulating Pillar	1
24	Screw	1
25	Teflon Cloth	2
26	Silicon Bar	1
27	Silicon Bar Fixing Bearing	1
28	Presser	1
29	Spring	2
30	Transformer Presser	2
31	Screw	1
32	Transformer Presser (800 Watt)	1
33	Screw	4
34	Heat Element	1
35	Screw	1
36	Handle	1
37	H62	2
38	Upper Bushing Insulation	1
39	Lower Bushing Insulation	1
40	Nut	1
41	Ray Splice	2
42	Joining Pillar	1
43	Screw	2
44	Screw	3
45	Panel	1
46	PCB	1
47	Screw	1
48	Timer Knob	1
49	Resistance Regulator	1
50	Screw	4
51	Rubber Beam Pad	4



ASSEMBLY DIAGRAM



NOTE: Some parts are listed and shown for illustration purposes only, and are not available individually as replacement parts.

Free Manuals Download Website

<http://myh66.com>

<http://usermanuals.us>

<http://www.somanuals.com>

<http://www.4manuals.cc>

<http://www.manual-lib.com>

<http://www.404manual.com>

<http://www.luxmanual.com>

<http://aubethermostatmanual.com>

Golf course search by state

<http://golfingnear.com>

Email search by domain

<http://emailbydomain.com>

Auto manuals search

<http://auto.somanuals.com>

TV manuals search

<http://tv.somanuals.com>