



## Lever Chain Hoist

---

Item 67144 – 1/4 Ton

Item 96482 – 3/4 Ton

Item 66106 – 1-1/2 Ton

### **▲WARNING**

Read this material before using this product.  
Failure to do so can result in serious injury.  
**SAVE THIS MANUAL.**



When unpacking, make sure that the product is intact and undamaged.  
If any parts are missing or broken, please call 1-800-444-3353 as soon as possible.

Visit our website at: <http://www.harborfreight.com>

Copyright© 2008 by Harbor Freight Tools®. All rights reserved. No portion of this manual or any artwork contained herein may be reproduced in any shape or form without the express written consent of Harbor Freight Tools. Diagrams within this manual may not be drawn proportionally.

Due to continuing improvements, actual product may differ slightly from the product described herein. Tools required for assembly and service may not be included.

Manual Revised 11e

## Specifications

Rated Capacity	67144: 1/4 Ton (500 lb.)
	96482: 3/4 Ton (1,500 lb.)
	66106: 1-1/2 Tons (3,000 lb.)
Lift Height	5 Feet

## Save This Manual

Keep this manual for the safety warnings and precautions, assembly, operating, inspection, maintenance and cleaning procedures. Write the product's serial number in the back of the manual near the assembly diagram (or month and year of purchase if product has no number). Keep this manual and the receipt in a safe and dry place for future reference.

## IMPORTANT SAFETY INFORMATION

In this manual, on the labeling, and all other information provided with this product:



This is the safety alert symbol. It is used to alert you to potential personal injury hazards. Obey all safety messages that follow this symbol to avoid possible injury or death.

### DANGER

**DANGER** indicates a hazardous situation which, if not avoided, will result in death or serious injury.

### WARNING

**WARNING** indicates a hazardous situation which, if not avoided, could result in death or serious injury.

### CAUTION

**CAUTION**, used with the safety alert symbol, indicates a hazardous situation which, if not avoided, could result in minor or moderate injury.

### NOTICE

**NOTICE** is used to address practices not related to personal injury.

### CAUTION

**CAUTION**, without the safety alert symbol, is used to address practices not related to personal injury.

## General Safety Rules



**WARNING** Read all safety warnings and instructions. *Failure to follow the warnings and instructions may result in serious injury.*

**Save all warnings and instructions for future reference.**

The warnings, precautions, and instructions discussed in this instruction manual cannot cover all possible conditions and situations that may occur. It must be understood by the operator that common sense and caution are factors which cannot be built into this product, but must be supplied by the operator.

1. **Work area safety**
  - a. **Keep work area clean and well lit.** *Cluttered or dark areas invite accidents.*
  - b. **Keep children and bystanders away while operating tools.** *Distractions can cause you to lose control.*
  - c. Connect the Hoist to solid beam, capable of supporting the weight of the Hoist and equipment being lifted.

## 2. Personal safety

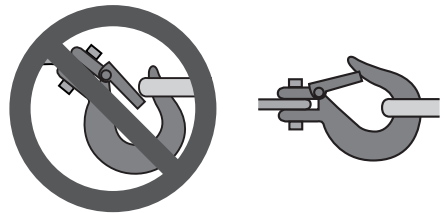
- a. **Stay alert, watch what you are doing and use common sense when using a tool. Do not use tools while you are tired or under the influence of drugs, alcohol or medication.** *A moment of inattention while operating a tool may result in serious personal injury.*
- b. **Use personal protective equipment. Always wear eye protection. Wear hard hat. Safety equipment such as dust mask, non-skid safety shoes, hard hat, or hearing protection used for appropriate conditions will reduce personal injuries.**
- c. **Dress properly. Do not wear loose clothing or jewelry. Keep your hair, clothing and gloves away from moving parts.** *Loose clothes, jewelry or long hair can be caught in moving parts.*
- d. **Only use safety equipment that has been approved by an appropriate standards agency.** *Unapproved safety equipment may not provide adequate protection. Eye protection must be ANSI-approved.*

## 3. Tool use and care

- a. **Store idle tools out of the reach of children and do not allow persons unfamiliar with this tool or these instructions to operate the tool.** *Tools are dangerous in the hands of untrained users.*
- b. **Inspect before every use. Check for:**
  - **damaged, worn, or deformed/ stretched chain links or hook,**
  - **damaged, disabled, or missing safety latch,**
  - **misalignment or binding of moving parts,**
  - **breakage of parts, and**
  - **any other condition that may affect the tool's operation.****If damaged, have the tool repaired before use.** *Many accidents are caused by poorly maintained tools.*
- c. **Do not lift, lower, pull anything beyond rated capacity.**  
**Be aware of dynamic loading!**

Sudden load movement may briefly create excess load causing product failure. Do not jostle or twist a suspended load, move item to the work area, lower and release the Hoist before beginning work.

- d. Do not use the Hoist to lift a person or animal.
- e. Do not work underneath a suspended load.
- f. Maintain labels and nameplates on the tool. These carry important safety information. If unreadable or missing, contact Harbor Freight Tools for a replacement.
- g. This product is not a toy. Keep it out of reach of children.
- h. Do not lubricate the braking system.
- i. Do not operate with twisted chain.
- j. Do not use handle extension to increase force on the handle.
- k. Do not insert bolt between chain links to 'splice' chain.
- l. Do not use a hammer to force hook/chain into place.
- m. Do not attach hook tip onto chain.
- n. Attach hook completely around attachment point and make sure the safety latch closes properly, as shown in Figure A, right.



**Figure A: Incorrect and Correct Hook Attachment**

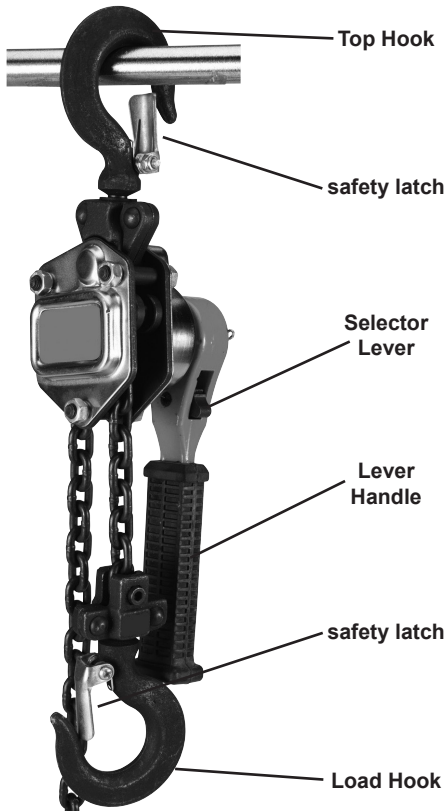
- o. Do not turn the Brake Knob (if equipped) to lower a load.
- p. Do not leave load suspended when unattended. Load brake is intended to support load only temporarily.
- q. Lift load slightly off ground and stop to test load brake before each lift.

# 67144 – 1/4 Ton Operating Instructions



Read the **ENTIRE IMPORTANT SAFETY INFORMATION** section at the beginning of this manual including all text under subheadings therein before set up or use of this product.

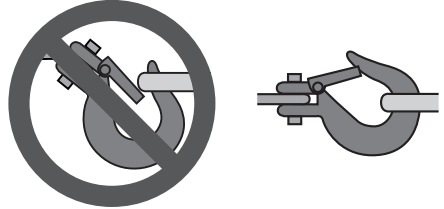
**Note:** For additional information regarding the parts listed in the following pages, refer to the Assembly Diagram near the end of this manual.



**Figure B: 67144 Controls**

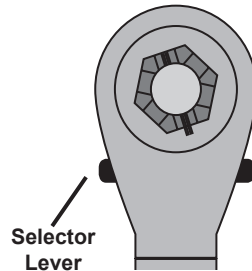
**WARNING!** Verify that the load weighs less than the capacity of your Hoist model, as listed in the Specifications chart. Attachment point must be rated to support the combined weight of hoist and load.

1. Attach the Hoist to the connection point by sliding the Top Hook onto it. The Top Hook must fit the connection point securely, with the safety latch fully engaged, as shown in Figure A, on the right.



**Figure A: Incorrect and Correct Hook Attachment**

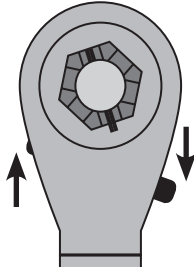
2. Turn the Selector Lever to the neutral position (see Figure C) to disengage the ratchet.



**Figure C: 67144 Selector Lever Neutral Position**

3. Pull the load chain by hand and attach the Load Hook to the load. The safety latch should be fully engaged. **Do not suspend a load on just the end of the hook,** see Figure A.

4. Move the Selector Lever to the up position (see Figure D) and ratchet the Lever Handle to lift the load.



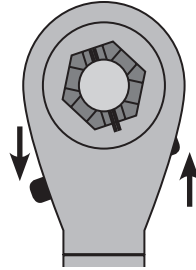
**Figure D: 67144 Selector Lever Up Position**

**Note:** If there is slack in the load chain, you may need to pull on the load chain slightly to get the ratchet to engage until the slack is taken up.

5. Lift load slightly and stop momentarily to make sure the load brake works before proceeding.

**WARNING!** Keep bystanders and pets away when a load is raised. Do not work under a raised load.

6. If the load is to be moved, lower it close to the ground prior to attempting to relocate the load. **Do not touch the Selector Lever until the load is ready to be lowered.**
7. To lower the load, turn the Selector Lever to the down position (see Figure E) and ratchet until the load is resting fully on the work area.



**Figure E: 67144 Selector Lever Down Position**

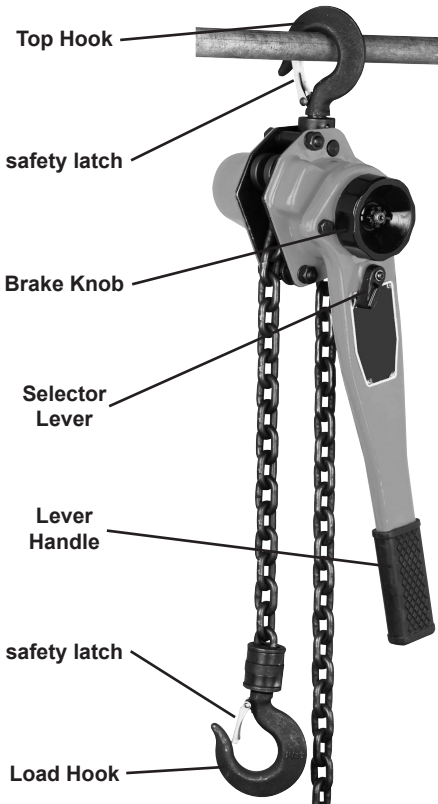
8. Disconnect Hoist, clean, then store the tool indoors out of children's reach.

**96482 – 3/4 Ton and  
66106 – 1-1/2 Ton  
Operating Instructions**



Read the **ENTIRE IMPORTANT SAFETY INFORMATION** section at the beginning of this manual including all text under subheadings therein before set up or use of this product.

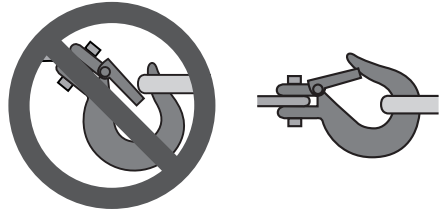
**Note:** For additional information regarding the parts listed in the following pages, refer to the Assembly Diagram near the end of this manual.



**Figure F: 66106/96482 Controls**

**WARNING!** Verify that the load weighs less than the capacity of your Hoist model, as listed in the Specifications chart. Attachment point must be ready to support the combined weight of hoist and load.

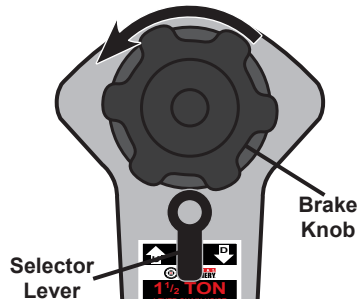
1. Attach the Hoist to the connection point by sliding the Top Hook onto it. The Top Hook must fit the connection point securely, with the safety latch fully engaged, as shown in Figure A, on the right.



**Figure A: Incorrect and Correct Hook Attachment**

2. Turn the Selector Lever to the neutral position (see Figure G) to disengage the ratchet.

**ONLY IF UNLOADED**, turn Brake Knob counterclockwise to release load holding brake



**Figure G: 66106/96482 Selector Lever and Brake Knob "N" / Neutral Position**

3. Turn the Brake Knob counterclockwise until it stops to release the load holding brake.

**WARNING! DO NOT TURN THE BRAKE KNOB COUNTERCLOCKWISE UNLESS NO LOAD IS SUPPORTED.**

4. Pull the load chain by hand and attach the Load Hook to the load. The safety latch should be fully engaged. **Do not suspend a load on just the end of the hook**, see Figure A.

- WARNING!** Turn the Brake Knob clockwise until it stops before lifting or lowering a load.
- Move the Selector Lever to the up position (see Figure H) and ratchet the Lever Handle to lift the load.

Turn Brake Knob clockwise to engage brake

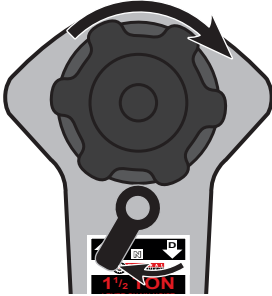


Figure H: 66106/96482 Selector Lever and Brake Knob “U” / Up Position

**Note:** If there is slack in the load chain, you may need to pull on the load chain slightly to get the ratchet to engage until the slack is taken up.

- Lift load slightly and stop momentarily to make sure the load brake works before proceeding.

**WARNING!** Keep bystanders and pets away when a load is raised. Do not work under a raised load.

- If the load is to be moved, lower it close to the ground prior to attempting to relocate the load. Do not touch the Selector Lever until the load is ready to be lowered.

- To lower the load, turn the Selector Lever to the down position (see Figure I) and ratchet until the load is resting fully on the work area.

**WARNING!** DO NOT LOWER BY TURNING BRAKE KNOB OR LOAD WILL FALL.



Figure I: 66106/96482 Selector Lever “D” / Down Position

- Disconnect Hoist, clean, then store the tool indoors out of children’s reach.

## User-Maintenance Instructions (for all lever chain hoists)



Procedures not specifically explained in this manual must be performed only by a qualified technician.

### **WARNING**

**TO PREVENT SERIOUS INJURY FROM TOOL FAILURE:**  
Do not use damaged equipment. If abnormal noise occurs, have the problem corrected before further use.

- BEFORE EACH USE**, inspect the general condition of the tool. Check for loose screws, misalignment or binding of moving parts, cracked or broken parts and any other condition that may affect its safe operation.
- AFTER USE**, clean surfaces of the tool with clean cloth.
- WEEKLY**, lubricate all chain links. Apply new lubricant on top of the old layer of lubricant.
- PERIODICALLY**, lubricate the moving parts of the Hoist with white lithium grease, but not the braking system.

# PLEASE READ THE FOLLOWING CAREFULLY

THE MANUFACTURER AND/OR DISTRIBUTOR HAS PROVIDED THE PARTS LIST AND ASSEMBLY DIAGRAM IN THIS MANUAL AS A REFERENCE TOOL ONLY. NEITHER THE MANUFACTURER OR DISTRIBUTOR MAKES ANY REPRESENTATION OR WARRANTY OF ANY KIND TO THE BUYER THAT HE OR SHE IS QUALIFIED TO MAKE ANY REPAIRS TO THE PRODUCT, OR THAT HE OR SHE IS QUALIFIED TO REPLACE ANY PARTS OF THE PRODUCT. IN FACT, THE MANUFACTURER AND/OR DISTRIBUTOR EXPRESSLY STATES THAT ALL REPAIRS AND PARTS REPLACEMENTS SHOULD BE UNDERTAKEN BY CERTIFIED AND LICENSED TECHNICIANS, AND NOT BY THE BUYER. THE BUYER ASSUMES ALL RISK AND LIABILITY ARISING OUT OF HIS OR HER REPAIRS TO THE ORIGINAL PRODUCT OR REPLACEMENT PARTS THERETO, OR ARISING OUT OF HIS OR HER INSTALLATION OF REPLACEMENT PARTS THERETO.

## Record Product's Serial Number Here:

---

**Note:** If product has no serial number, record month and year of purchase instead.

**Note:** Some parts are listed and shown for illustration purposes only, and are not available individually as replacement parts.

## Parts Lists and Diagrams

### 67144 Parts List

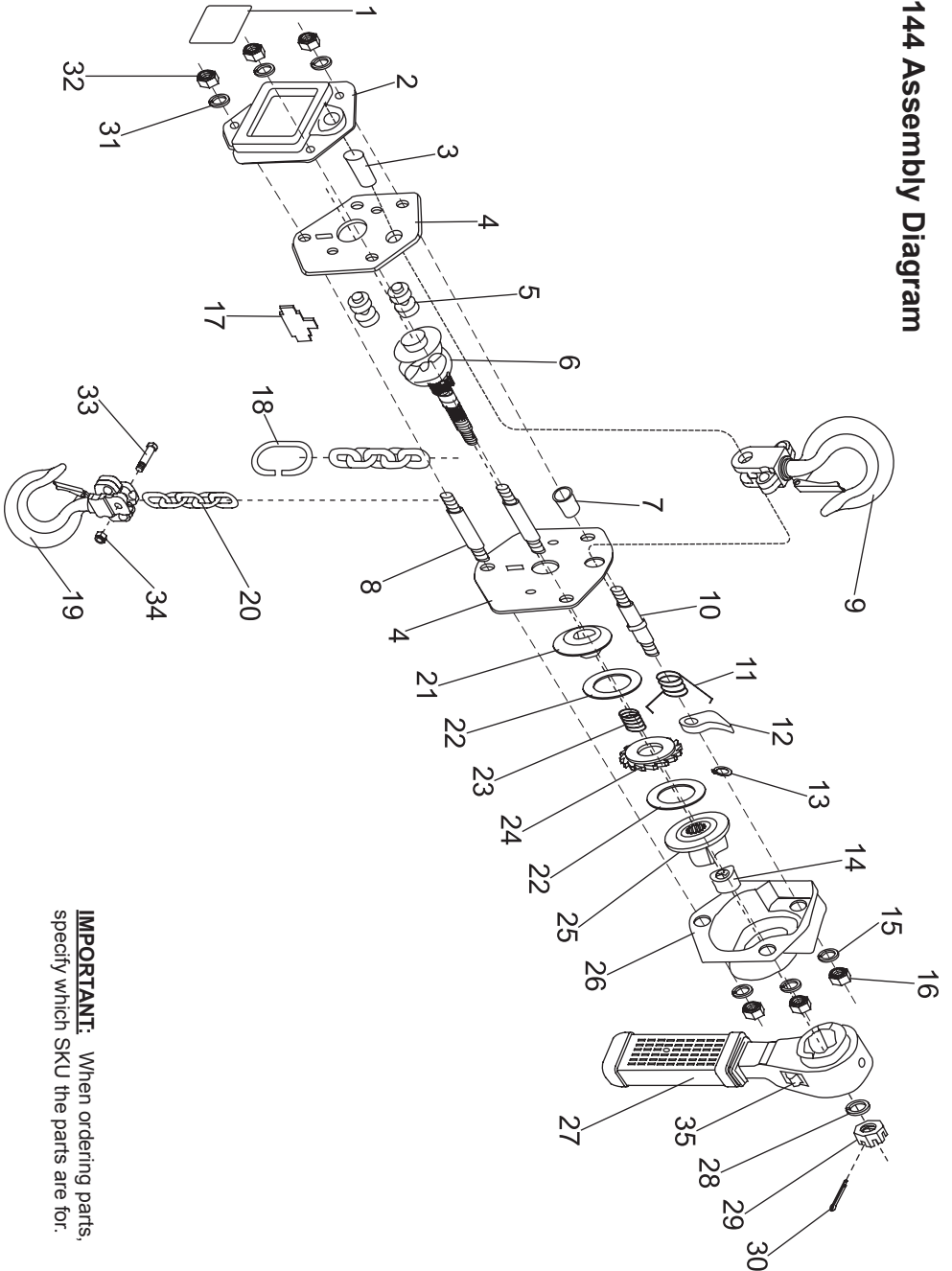
**IMPORTANT:** When ordering parts, specify which SKU the parts are for.

Part	Description	Qty.
1	Label	1
2	Gear Case	1
3	Top Pin	1
4	Side Plate	2
5	Guide Roller	2
6	Lifting Shaft	1
7	Bushing	1
8	Stay Bolt A	2
9	Top Hook	1
10	Stay Bolt B	1
11	Pawl Spring	1
12	Pawl	1
13	Circlip	1
14	Split Cam	1
15	Spring Washer A	1
16	Hex Nut A	1
17	Chain Stripper	1
18	Chain End Ring	1

Part	Description	Qty.
19	Bottom Hook	1
20	Load Chain	1
21	Brake Seat	1
22	Brake Disc	2
23	Brake Spring	1
24	Ratchet Wheel	1
25	Female Thread Disk	1
26	Brake Cover	1
27	Handle	1
28	Flat Washer	1
29	Slot Knob	1
30	Split Pin	1
31	Spring Washer B	5
32	Hex Nut B	5
33	Suspension Pin	1
34	Locking Nut	1
35	Selector Lever	1



# 67144 Assembly Diagram



**IMPORTANT:** When ordering parts, specify which SKU the parts are for.

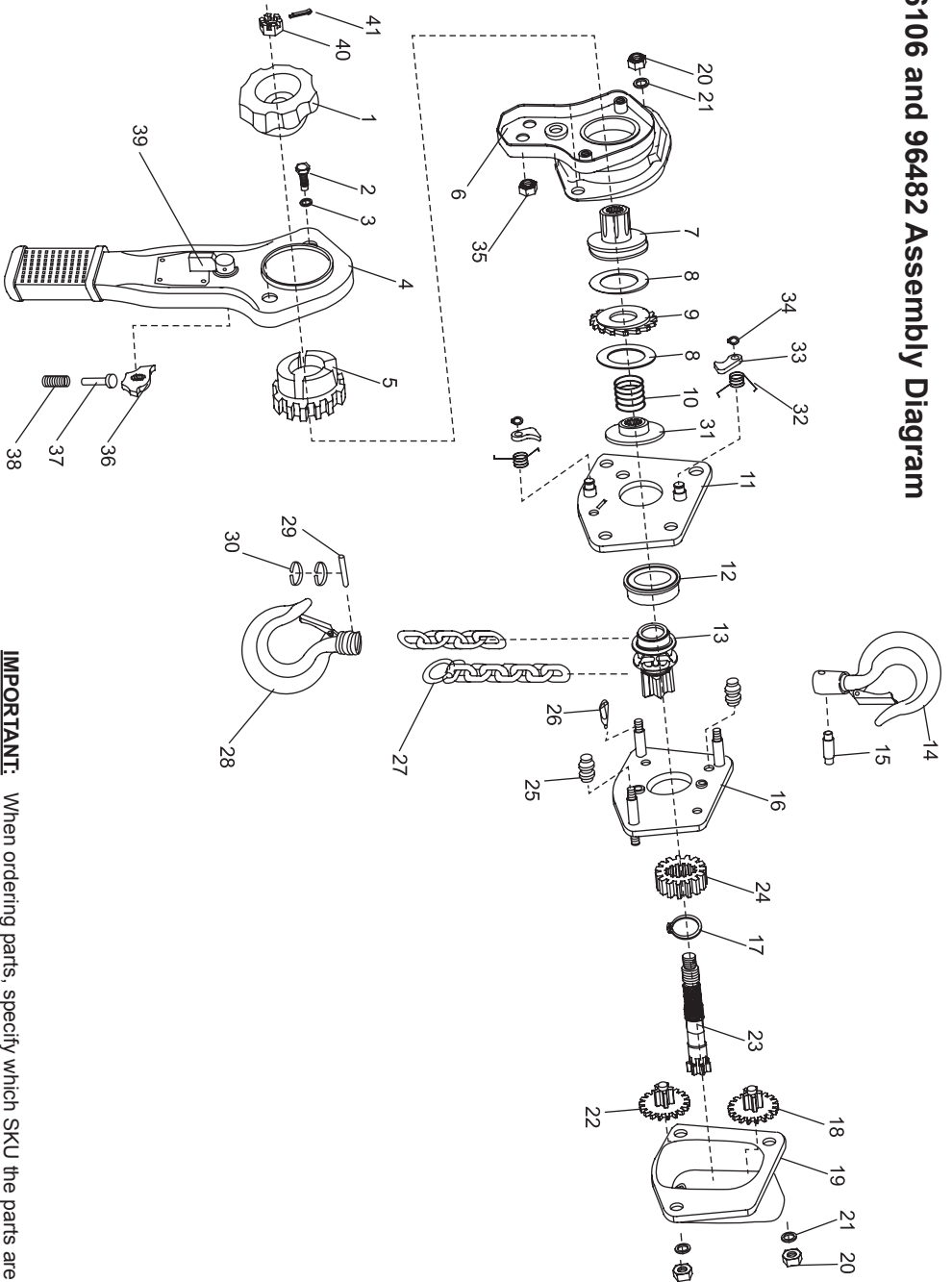
## 66106 and 96482 Parts List

**IMPORTANT:** When ordering parts, specify which SKU the parts are for.

Part	Description	Qty
1	Brake Knob	1
2	Screw	2
3	Spring Washer	2
4	Lever Handle	1
5	Selector Wheel	1
6	Handle Case	1
7	Thread Disk	1
8	Brake Disc	2
9	Ratchet Disk	1
10	Brake Spring	1
11	Side Plate A	1
12	Bearing Ring	1
13	Sprocket	1
14	Top Hook	1
15	Top Pin	1
16	Side Plate B	1
17	Snap Ring	1
18	Gear Disk A	1
19	End Plate	1
20	Hex Nut	6
21	Spring Washer	6

Part	Description	Qty
22	Gear Disk B	1
23	Driving Shaft	1
24	Splined Gear	1
25	Guide Roller	2
26	Chain Stripper	1
27	Chain	1
28	Load Hook	1
29	Chain Pin	1
30	Snap Ring	2
31	Brake Seat	1
32	Pawl Spring	2
33	Pawl	2
34	Washer	2
35	Locknut	2
36	Changeover Pawl	1
37	Spring Pin	1
38	Changeover Spring	1
39	Selector Lever	1
40	Slotted Nut	1
41	Split Pin	1

# 66106 and 96482 Assembly Diagram



**IMPORTANT:** When ordering parts, specify which SKU the parts are for.

## Limited 90 Day Warranty

Harbor Freight Tools Co. makes every effort to assure that its products meet high quality and durability standards, and warrants to the original purchaser that this product is free from defects in materials and workmanship for the period of 90 days from the date of purchase. This warranty does not apply to damage due directly or indirectly, to misuse, abuse, negligence or accidents, repairs or alterations outside our facilities, criminal activity, improper installation, normal wear and tear, or to lack of maintenance. We shall in no event be liable for death, injuries to persons or property, or for incidental, contingent, special or consequential damages arising from the use of our product. Some states do not allow the exclusion or limitation of incidental or consequential damages, so the above limitation of exclusion may not apply to you. THIS WARRANTY IS EXPRESSLY IN LIEU OF ALL OTHER WARRANTIES, EXPRESS OR IMPLIED, INCLUDING THE WARRANTIES OF MERCHANTABILITY AND FITNESS.

To take advantage of this warranty, the product or part must be returned to us with transportation charges prepaid. Proof of purchase date and an explanation of the complaint must accompany the merchandise. If our inspection verifies the defect, we will either repair or replace the product at our election or we may elect to refund the purchase price if we cannot readily and quickly provide you with a replacement. We will return repaired products at our expense, but if we determine there is no defect, or that the defect resulted from causes not within the scope of our warranty, then you must bear the cost of returning the product.

This warranty gives you specific legal rights and you may also have other rights which vary from state to state.

**3491 Mission Oaks Blvd. • PO Box 6009  
Camarillo, CA 93011 • (800) 444-3353**



**3491 Mission Oaks Blvd. • PO Box 6009 • Camarillo, CA 93011 • (800) 444-3353**

## Free Manuals Download Website

<http://myh66.com>

<http://usermanuals.us>

<http://www.somanuals.com>

<http://www.4manuals.cc>

<http://www.manual-lib.com>

<http://www.404manual.com>

<http://www.luxmanual.com>

<http://aubethermostatmanual.com>

Golf course search by state

<http://golfingnear.com>

Email search by domain

<http://emailbydomain.com>

Auto manuals search

<http://auto.somanuals.com>

TV manuals search

<http://tv.somanuals.com>