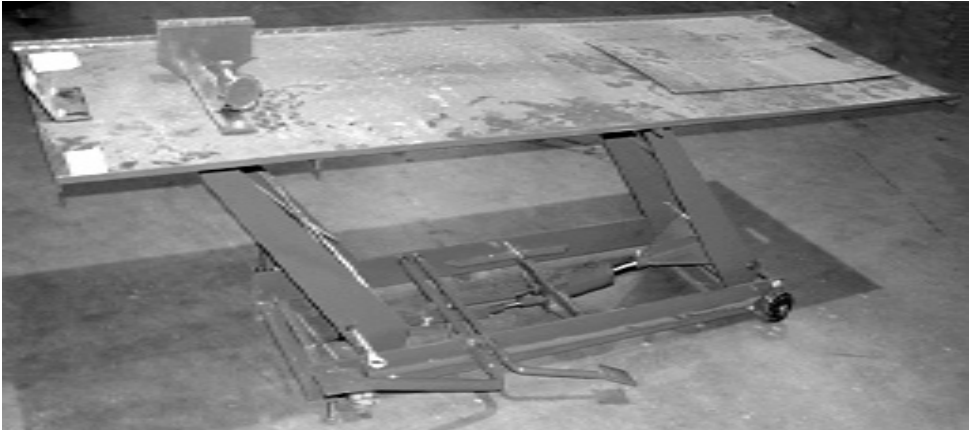




1000 Lb. Motorcycle Lift

Model 91764

ASSEMBLY AND OPERATING INSTRUCTIONS



Diagrams within this manual may not be drawn proportionally.
Due to continuing improvements, actual product may differ slightly from the product described herein.

Distributed exclusively by Harbor Freight Tools®.

3491 Mission Oaks Blvd., Camarillo, CA 93011

Visit our website at: <http://www.harborfreight.com>



**Read this material before using
this product. Failure to do so
can result in serious injury.**

SAVE THIS MANUAL.

Copyright© 2004 by Harbor Freight Tools®. All rights reserved. No portion of this manual or any artwork contained herein may be reproduced in any shape or form without the express written consent of Harbor Freight Tools.

For technical questions or replacement parts, please call 1-800-444-3353.

Download from [Www.Somanuals.com](http://www.Somanuals.com). All Manuals Search And Download.

Specifications

General Construction	Steel
Platform Dimensions	86-1/2"L x 26-3/4"W
Height Range	7" to 29--1/2"
Maximum Capacity	1000lbs. (1/2 ton)
Valve Operation	Hydraulic Valve Foot Pedal
Maximum Elevation	31"
Features	Tire Vise Caster Wheels w/ Mechanical Brake Position Locking Safety Bar
Weight	350 Lbs.

This motorcycle lift is ideal for maintenance on your motorcycle. Its rugged steel construction and generous 1000 lb. lift capacity are ideal for most home or small shop maintenance jobs on motorcycles. The foot operated hydraulic jack allows you to keep your hands free while lifting or lowering the motorcycle. The ramp is detachable for flexible use, and includes dual mounting pins to allow to you configure the lift to best fit your motorcycle. The removable platform panel makes rear wheel removal easy. The three-position vise opens up to a generous 6-1/8" to accept even the widest tires. The steel, locking casters allow you to move the motorcycle on the lift easily around the shop, and lock it into place for maintenance work.

Save This Manual

You will need the manual for the safety warnings and precautions, assembly instructions, operating and maintenance procedures, parts list and diagram. Keep your invoice with this manual. Write the invoice number on the inside of the front cover. Keep the manual and invoice in a safe and dry place for future reference.

Safety Warnings and Precautions

WARNING: When using this lift, basic safety precautions should always be followed to reduce the risk of personal injury and damage to equipment. This lift is a heavy piece of equipment. Take extra precautions and use at least 2 people when moving the Motorcycle Lift.

Read all instructions before using this lift!

1. **Keep work area clean.** Cluttered areas invite injuries.

SKU 91764 **For technical questions, please call 1-800-444-3353.**

REV 08k
Page 2

2. **Observe work area conditions.** Do not use machines or power tools in damp or wet locations. Don't expose to rain. Keep work area well lighted.
3. **Keep children away.** Children must never be allowed in the work area. Do not let them handle machines, tools, or extension cords.
4. **Store idle equipment.** When not in use, tools must be stored in a dry location to inhibit rust. Always lock up tools and keep out of reach of children.
5. **Use the right tool for the job.** Do not attempt to force a small tool or attachment to do the work of a larger industrial tool. There are certain applications for which this tool was designed. It will do the job better and more safely at the rate for which it was intended. Do not modify this tool and do not use this tool for a purpose for which it was not intended.
6. **Dress properly.** Do not wear loose clothing or jewelry as they can be caught in moving parts. Protective, clothes and non-skid footwear are recommended when working. Wear restrictive hair covering to contain long hair.
7. **Use eye and ear protection.** Always wear ANSI approved impact safety goggles. Wear an ANSI approved dust mask or respirator when working around metal, wood, and chemical dusts and mists.
8. **Do not overreach.** Keep proper footing and balance at all times. Do not reach over or across running machines.
9. **Maintain tools with care.** Keep tools sharp and clean for better and safer performance. Follow instructions for lubricating and changing accessories. The handles must be kept clean, dry, and free from oil and grease at all times.
10. **Remove adjusting keys and wrenches.** Check that keys and adjusting wrenches are removed from the tool or machine work surface before operating.
11. **Avoid unintentional lowering.** Keep feet and hands away from the pump pedal and release pedal when you are not prepared to raise or lower the lift. Be sure that the Locking Bar (22) is in place during the time that the lift is not intended to be lowered. Remove the Locking Bar only when you intend to lower the lift, and it is safe to do so.
12. **Stay alert.** Watch what you are doing, use common sense. Do not operate any tool when you are tired.
13. **Check for damaged parts.** Before using any tool, any part that appears damaged should be carefully checked to determine that it will operate properly and perform its intended function. Check for alignment and binding of moving parts; any broken parts or mounting fixtures; and any other condition that may affect proper operation. Any part that is damaged should be properly repaired or replaced by a qualified technician.

14. **Replacement parts and accessories.** When servicing, use only identical replacement parts. Use of any other parts will void the warranty. Only use accessories intended for use with this tool. Approved accessories are available from Harbor Freight Tools.
15. **Do not operate tool if under the influence of alcohol or drugs.** Read warning labels on prescriptions to determine if your judgment or reflexes are impaired while taking drugs. If there is any doubt, do not operate the tool.
16. **Maintenance.** For your safety, service and maintenance should be performed regularly by a qualified technician.
17. **Do not exceed the weight limit of this lift.** Overloading the lift may result in unexpected, rapid lowering of the object being held, as well as damage to the lift itself; serious injury and property damage may result.
18. **Assure that any load being supported by this lift is well balanced.** Unbalanced loads may cause the lift to fall over, potentially causing serious personal injury or property damage.
19. **This lift is not to be used for any aircraft purposes.**
20. **WARNING:** Before standing or working underneath any elevated motorcycle, be sure that the motorcycle is properly and safely secured. For your safety and the safety of others, use good professional practice and common sense.

Caution: Always be aware of Dynamic Loading. If you drop a weight on the Motorcycle Lift. It may create for a brief instant, an excess load. The Motorcycle Lift is designed for 1,000 lbs. maximum load; do not exceed.

Warning: The warnings, cautions, and instructions discussed in this instruction manual cannot cover all possible conditions and situations that may occur. It must be understood by the operator that common sense and caution are factors which cannot be built into this product, but must be supplied by the operator.

Unpacking

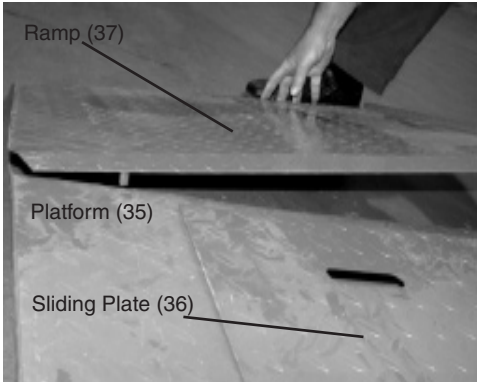
When unpacking, check to make sure the following parts are included.

<i>Main Lift Assembly</i>	<i>Sliding Plate</i>
<i>Ramp</i>	<i>Vise Assembly</i>
<i>Lift Foot Pedal</i>	<i>Release Foot Pedal</i>
<i>Locking Bar</i>	<i>Fastener Hardware Kit</i>

If any parts are missing or broken, please call Harbor Freight Tools at the number on the cover of this manual.

Assembly

Prepare for assembly by having a clean, well lighted location. You will probably assemble the lift on the floor, but a work table will be helpful for some sub-assembly. You will need several small open-end or adjustable wrenches (not included) to complete assembly.

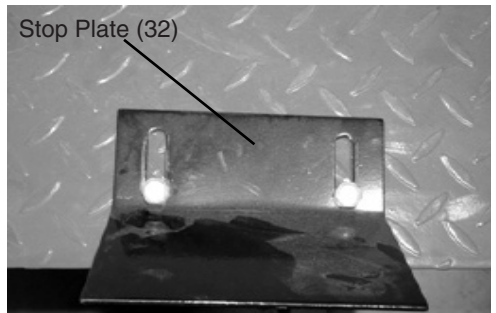


1) Place the Sliding Plate (36) onto the Platform (35) to cover the rear wheel removal opening.

2) Attach the Ramp (37) to the end of the Platform (35) using Washers (23) and R-Pins (04).

3) Fit the Front Wheel Vise Assembly (34) to the front of the platform using Bolts (33), Washers (23), and Nuts (30). Always select the position that will best suit your particular motorcycle.

- 4) Attach the Stop Plate (32) using Bolts (33), Washers (23), and Nuts (30).
- 5) Fit the Lift Foot Pedal (11) over the Pump Piston Spindle (9).
- 6) Fit the Release Foot Pedal (10) over the Release Valve Spindle (5).



First Use Instructions

The Hydraulic unit is prefilled, so that you do not have to fill the hydraulic cylinder before use. However, during shipping the oil may become agitated. Before first use, let the oil settle for 1 hour before purging the system. NOTE: Failure to let the oil settle may result in air remaining in the oil, causing the need for a second purging.

- 1) Purge the system of air by fully pressing the Release Foot Pedal (10) and pumping the Foot Pedal (11) 15 to 20 times.
- 2) Before first use, test the lift by raising it to full height and then lowering it. Depress the Foot Pedal (10) slowly to control the rate of descent.

If the lift does not operate properly, let the oil settle for an additional hour before repeating the purging process.

WARNING: Do not overload this lift, which has a 1/2 Ton (1000 Lbs. capacity). The lift may be damaged, and you may experience unplanned, rapid lowering of the load. This may cause severe personal injury or property damage.

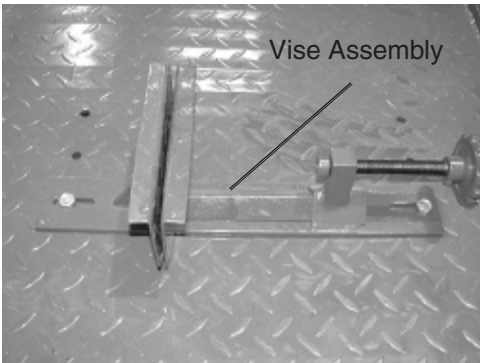
WARNING: Do not carry an unbalanced load, or a load not appropriate to the designed use of this lift. The lift may topple over causing serious personal injury or property damage.

Warning: With the lift in position and before the Motorcycle is on the lift, raise the Casters (14) off the ground to prevent the lift from moving during use. Raise the Casters by turning the Adjustment Screw (18) clockwise.

Operation

WARNING: Before standing or working underneath any elevated motorcycle, be sure that the motorcycle is properly and safely secured. For your safety and the safety of others, use good professional practice and common sense.

- 1) Position the lift in a safe, secure area. Be sure that the surface on which you are working is level and solid, capable of supporting at least 1000 lbs.
- 2) With the Sliding Plate (36) in place, roll the motorcycle onto the lift. Kick the center stand of the motorcycle down to stabilize it on the stand.



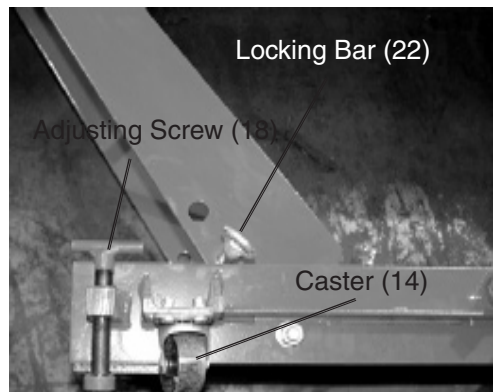
- 3) Clamp the front wheel of the motorcycle into the Vise Assembly to prevent movement of the wheel. For maximum safety, you should also stabilize the motorcycle using tie-down straps (not included).

- 4) Pump the Lift Foot Pedal (11) repeatedly to raise the lift.

- 5) When the platform has been raised to the working height, pass the Locking Bar (22) through the holes in

the Front Lifting Arm (38) so the lift cannot be accidentally lowered. You may now perform maintenance on the motorcycle.

- 6) When the work is completed, check under the Lift to see that there are no obstructions, and that it is safe to lower the unit. Remove the Locking Bar (22), then slowly press the Release Foot Pedal (10) to slowly lower the unit.



NOTE: The speed of lowering is controlled by the Release Foot Pedal (10). It is advisable to operate this pedal slowly in a controlled and safe manner whenever lowering the Lift and its contents.

- 7) When the Lift is lowered, open the vise jaws, and remove the motorcycle from the lift.

WARNING: The use of this lift is limited to the raising, lowering, and transportation in the lowest position, of motorcycles. It is not designed to store motorcycles or other parts. No motorcycle or other part should be left on the lift for an extended period of time.

Do not overload. The capacity of this lift is 1/2 Ton (1000 Lbs.). This lift is designed to use only on hard, level surfaces capable of supporting the load, the 350 lb. weight of the Lift and all supporting tools. Overloading or use on other surfaces may cause instability and possible property damage or personal injury.

Maintenance

- 1) The hydraulic system is closed and will normally require no maintenance.
- 2) The mechanical parts of the Lift, such as the pedal lift and release shafts should be occasionally lubricated with heavy oil or grease.
- 3) Protect the Lift Cylinder from dirt or grit, when in the raised position. If it becomes dirty, wipe it off with a clean cloth.
- 4) Maintain and store the Lift in a reasonably protected environment. Do not expose to rain or excess moisture. Protect from salt water or other corrosive materials. If it becomes dirty or contaminated, clean it promptly with clean water or a suitable detergent. If using a pressure washer, be aware that you may remove some paint from the outer surface. Never apply a pressure washer to the seal areas near the pistons or valves. Be sure to lubricate external moving parts after cleaning.
- 5) If the lift “fades”, allowing a load to slowly lower on its own, you may have damaged seals or insufficient lift oil. First check the oil level. If the level is OK, take the lift to a qualified service technician for seal replacement. Damaged seals may be caused by overloading, or exposure to harmful conditions or inappropriate use of a pressure washer. **NOTE:** If the lift can be pumped up to its highest position, it indicates that there is enough oil. If the lift fades from this position, it indicates that the problem is likely with the seals.
- 6) To check the oil level, be sure the lift is in its lowest position. Remove the Oil Filler Plug (P22). The oil level should be even with the bottom of the filler plug hole. You can visually see the oil, or test with your finger. If the oil level is low, add any good hydraulic oil of 15/40 viscosity. Do not use any other oil or brake fluid, which will damage the seals.

Parts List

Part #	Description	Qty.
P1	Base	
P2	Steel Ball	2
P3	Spring	2
P4	Screw	2
P5	Nylon Ring	1
P6	Regulating Plug	1
P7	Sealing Ring	1
P8	Pump Piston	1
P9	Union Nut	1
P10	Union Nut	1
P11	Screw	1
P12	Spring	1
P13	Release Valve	1
P14	O-Ring	1
P15	Steel Ball	1
P16	Steel Ball	1
P17	Ball Cup	1
P18	Spring	1

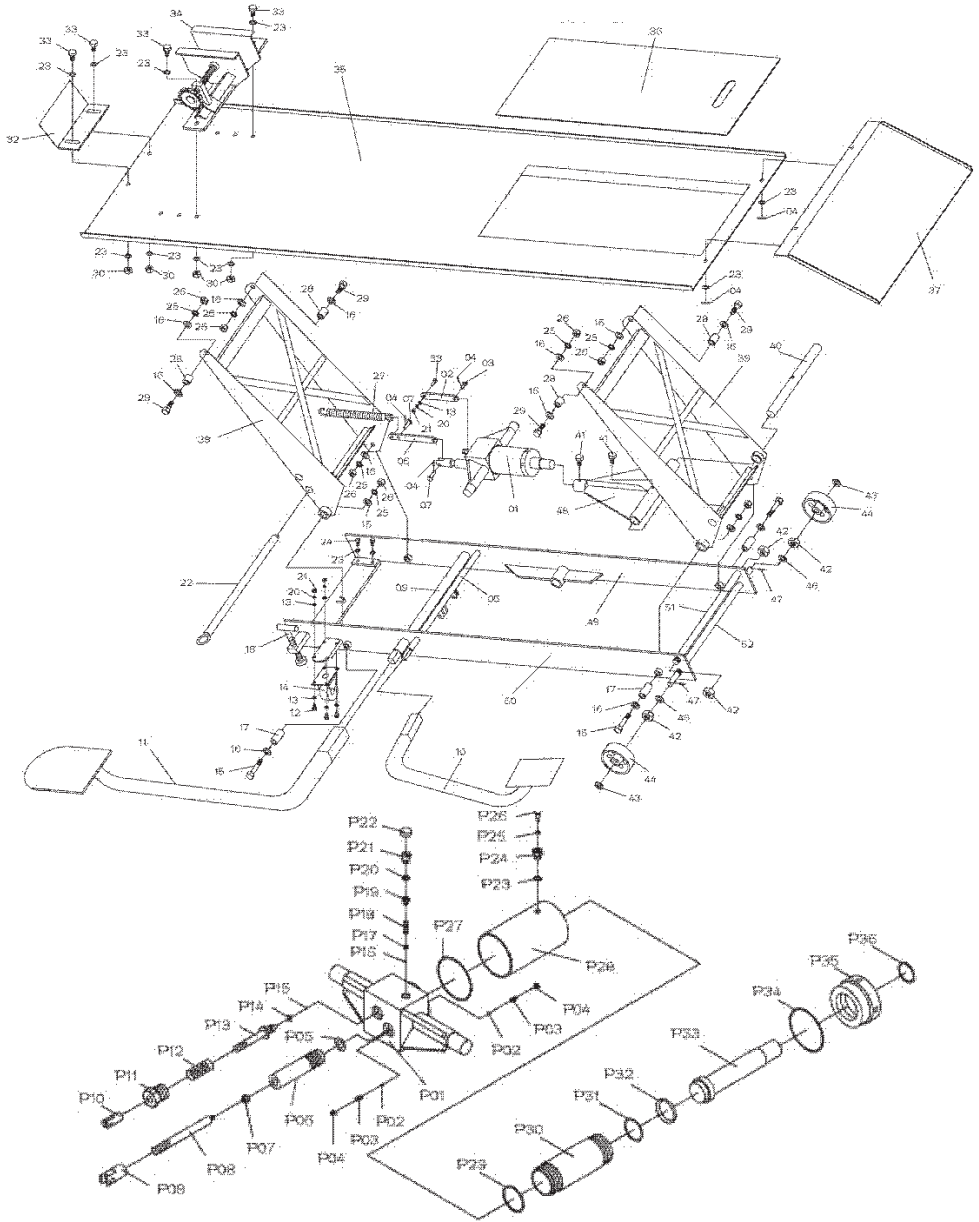
Part #	Description	Qty.
P19	Screw	1
P20	O-Ring	1
P21	Screw	1
P22	Filler Plug	1
P23	O-Ring	1
P24	Nut	1
P25	Ring	1
P26	Breather Valve	1
P27	Nylon Ring	1
P28	Reservoir	1
P29	Nylon Ring	1
P30	Cylinder	1
P31	O-Ring	1
P32	Nylon Ring	1
P33	Piston Rod	1
P34	Nylon Ring	1
P35	Top Nut	1
P36	O-Ring	1

Parts List Continued

Part #	Description	Qty.
1	Hydraulic Pump	1
2	Link	1
3	Pin	1
4	R-Pin	5
5	Release Valve Spindle	1
6	Link	1
7	Pin	2
9	Pump Piston Spindle	1
10	Release Foot Pedal	1
11	Lift Foot Pedal	1
12	Bolt m6x16	8
13	Washer 6mm	17
14	Caster Fork Assembly	2
15	Bolt m12 x 70	4
16	Washer 12mm	8
17	Bush	4
18	Adjusting Screw Assembly	2
20	Lock Washer 6mm	9
21	Nut m6	9
22	Locking Bar	1
23	Washer 10mm	14
24	Bolt m10 x 20	4
25	Lock Washer 12mm	8
26	Nut m12	8

Part #	Description	Qty.
27	Spring	1
28	Bush	4
29	Bolt m12 x 40	4
30	Nut m10	4
32	Stop Plate	1
33	Bolt m10 x 25	4
34	Vise Assembly	1
35	Platform	1
36	Sliding Plate	1
37	Ramp	1
38	Front Lifting Arm	1
39	Rear Lifting Arm	1
40	Lifting Arm Spindle	1
41	Bolt m8 x 12	2
42	Nut m16	4
43	Washer m14	2
44	Front Wheel	2
46	Washer 16mm	2
47	Cotter Pin	2
48	Connection	1
49	Frame Assembly (RH)	1
50	Frame Assembly (LH)	1
51	Lifting Arm Top Rod	1
52	Front Spindle	1
53	Bolt m6 x 30	1

Assembly Drawing



NOTE: Some parts are listed and shown for illustration purposes only and are not available individually as replacement parts.

LIMITED 90 DAY WARRANTY

Harbor Freight Tools Co. makes every effort to assure that its products meet high quality and durability standards, and warrants to the original purchaser that this product is free from defects in materials and workmanship for the period of 90 days from the date of purchase. This warranty does not apply to damage due directly or indirectly, to misuse, abuse, negligence or accidents, repairs or alterations outside our facilities, criminal activity, improper installation, normal wear and tear, or to lack of maintenance. We shall in no event be liable for death, injuries to persons or property, or for incidental, contingent, special or consequential damages arising from the use of our product. Some states do not allow the exclusion or limitation of incidental or consequential damages, so the above limitation of exclusion may not apply to you. THIS WARRANTY IS EXPRESSLY IN LIEU OF ALL OTHER WARRANTIES, EXPRESS OR IMPLIED, INCLUDING THE WARRANTIES OF MERCHANTABILITY AND FITNESS.

To take advantage of this warranty, the product or part must be returned to us with transportation charges prepaid. Proof of purchase date and an explanation of the complaint must accompany the merchandise. If our inspection verifies the defect, we will either repair or replace the product at our election or we may elect to refund the purchase price if we cannot readily and quickly provide you with a replacement. We will return repaired products at our expense, but if we determine there is no defect, or that the defect resulted from causes not within the scope of our warranty, then you must bear the cost of returning the product.

This warranty gives you specific legal rights and you may also have other rights which vary from state to state.

3491 Mission Oaks Blvd. • PO Box 6009 • Camarillo, CA 93011 • (800) 444-3353

PLEASE READ THE FOLLOWING CAREFULLY

THE MANUFACTURER AND/OR DISTRIBUTOR HAS PROVIDED THE PARTS DIAGRAM IN THIS MANUAL AS A REFERENCE TOOL ONLY. NEITHER THE MANUFACTURER NOR DISTRIBUTOR MAKES ANY REPRESENTATION OR WARRANTY OF ANY KIND TO THE BUYER THAT HE OR SHE IS QUALIFIED TO MAKE ANY REPAIRS TO THE PRODUCT OR THAT HE OR SHE IS QUALIFIED TO REPLACE ANY PARTS OF THE PRODUCT. IN FACT, THE MANUFACTURER AND/OR DISTRIBUTOR EXPRESSLY STATES THAT ALL REPAIRS AND PARTS REPLACEMENTS SHOULD BE UNDERTAKEN BY CERTIFIED AND LICENSED TECHNICIANS AND NOT BY THE BUYER. THE BUYER ASSUMES ALL RISK AND LIABILITY ARISING OUT OF HIS OR HER REPAIRS TO THE ORIGINAL PRODUCT OR REPLACEMENT PARTS THERETO, OR ARISING OUT OF HIS OR HER INSTALLATION OF REPLACEMENT PARTS THERETO.

Free Manuals Download Website

<http://myh66.com>

<http://usermanuals.us>

<http://www.somanuals.com>

<http://www.4manuals.cc>

<http://www.manual-lib.com>

<http://www.404manual.com>

<http://www.luxmanual.com>

<http://aubethermostatmanual.com>

Golf course search by state

<http://golfingnear.com>

Email search by domain

<http://emailbydomain.com>

Auto manuals search

<http://auto.somanuals.com>

TV manuals search

<http://tv.somanuals.com>