

PET HAIR CLIPPER

Model 96822

CLEANING AND OPERATION INSTRUCTIONS



Diagrams within this manual may not be drawn proportionally.

Due to continuing improvements, actual product may differ slightly from the product described herein.

Distributed exclusively by Harbor Freight Tools®.

3491 Mission Oaks Blvd., Camarillo, CA 93011

Visit our website at: <http://www.harborfreight.com>



**Read this material before using this product.
Failure to do so can result in serious injury.
SAVE THIS MANUAL.**

Copyright© 2007 by Harbor Freight Tools®. All rights reserved. No portion of this manual or any artwork contained herein may be reproduced in any shape or form without the express written consent of Harbor Freight Tools.

For technical questions or replacement parts, please call 1-800-444-3353.

SAVE THIS MANUAL

Keep this manual for the safety warnings and precautions, assembly, operating, inspection, maintenance and cleaning procedures. Write the product's serial number in the back of the manual near the assembly diagram (or month and year of purchase if product has no number). Keep this manual and the receipt in a safe and dry place for future reference.

IMPORTANT SAFEGUARDS

In this manual, on the labeling, and all other information provided with this product:



This is the safety alert symbol. It is used to alert you to potential personal injury hazards. Obey all safety messages that follow this symbol to avoid possible injury or death.

! DANGER

DANGER indicates a hazardous situation which, if not avoided, will result in death or serious injury.

! WARNING

WARNING indicates a hazardous situation which, if not avoided, could result in death or serious injury.

! CAUTION

CAUTION, used with the safety alert symbol, indicates a hazardous situation which, if not avoided, could result in minor or moderate injury.

NOTICE

NOTICE is used to address practices not related to personal injury.

CAUTION

CAUTION, without the safety alert symbol, is used to address practices not related to personal injury.

READ AND UNDERSTAND ALL INSTRUCTIONS

When using electrical appliances, safety precautions should always be followed including the following:

Work Area Safety

1. Do not use outdoors.
2. Close supervision is necessary when any appliance is used on or near children.
3. Do not let cord hang over edge of table or counter, or touch hot surfaces.
4. Keep the work area well lit. Make sure there is adequate surrounding workspace. Keep the work area free of obstructions and other debris.

Electrical Safety

1. To protect against electrical shock do not immerse cord, plugs, or the main unit in water or other liquid. Only the non-electrical parts of the unit may be immersed for cleaning. Thoroughly clean and dry these parts prior to first use and before every subsequent use.

2. Unplug from outlet when not in use and before maintenance or cleaning.
3. Do not operate any appliance with a damaged cord or plug or after the appliance malfunctions or has been damaged in any manner. Return appliance to the nearest authorized service facility for examination, repair, or adjustment.
4. This appliance has a polarized plug (one blade is wider than the other). To reduce the risk of electric shock, this plug is intended to fit into a polarized outlet only one way. If the plug does not fit fully in the outlet, reverse the plug. If it still does not fit, contact a qualified electrician. Do not change the plug in any way.
5. Do not use this product in a damp or wet location.

Power Cord Safety

1. A short power supply cord is to be provided to reduce risks resulting from becoming entangled in or tripping over a longer cord.
2. Longer extension cords are available and may be used if care is exercised in their use.
3. If a long extension cord is used,
 - a. The marked electrical rating of the (detachable power supply cord or) extension cord should be at least as great as the electrical rating of the appliance,
 - b. If the appliance is of the grounded type, the extension cord should be a grounding type 3-wire cord, and
 - c. The longer cord should be arranged so that it will not drape over the counter top or tabletop where it can be pulled on by children or tripped over.

General Safety

1. The use of accessory attachments not recommended by the appliance manufacturer may cause injuries. Never use attachments from other clipper sets with this product.
2. Plug cord into the wall outlet. To disconnect, turn the power switch to "off", then remove plug from wall outlet.
3. Do not use appliance for other than intended use.
4. Maintain labels and nameplates on the appliance. These carry important safety information. If unreadable or missing, contact Harbor Freight Tools for a replacement.
5. This product is not a toy. Keep it out of reach of children.
6. The warnings, precautions, and instructions discussed in this instruction manual cannot cover all possible conditions and situations that may occur. It must be understood by the operator that common sense and caution are factors which cannot be built into this product, but must be supplied by the operator.

 **SAVE THESE INSTRUCTIONS.**

SPECIFICATIONS

| | |
|-------------------------|--|
| Electrical Requirements | 120 V~ / 60 Hz / 8 W |
| Accessories | Pet Hair Trimmer Scissors Cleaning Brush Blade Oil (Plastic Bottle) Comb Attachments |
| Comb Attachments | Right Ear Taper Left Ear Taper No. 1: 1/8" (.3 cm) Cut No. 2: 1/4" (.6 cm) Cut No. 3: 3/8" (.9 cm) Cut No. 4: 1/2" (1.3 cm) Cut |

HOUSEHOLD USE ONLY

UNPACKING

When unpacking, check to make sure that the item is intact and undamaged. If any parts are missing or broken, please call Harbor Freight Tools at the number shown on the cover of this manual as soon as possible.

CLEANING



Read the **ENTIRE IMPORTANT SAFEGUARDS** section at the beginning of this manual including all text under subheadings therein before set up or use of this product.

WARNING

RISK OF SHOCK!

Before cleaning appliance, make sure the appliance's switch is turned off, the cord is unplugged, and the unit has cooled completely.



Do not immerse motor/heating element, cord, or plug in water or any other liquid.

1. Remove cover and gently remove hair particles with the included cleaning brush or compressed air.
2. Wipe exterior of Clipper with a moist, soft cloth and store product out of the reach of children.

ASSEMBLY & OPERATION



Read the **ENTIRE IMPORTANT SAFEGUARDS** section at the beginning of this manual including all text under subheadings therein before set up or use of this product.

WARNING

Before appliance assembly or adjustment, make sure the appliance's switch is turned off, the cord is unplugged, and the unit has cooled completely.

Note: For additional information regarding the parts listed in the following pages, refer to the Assembly Diagram near the end of this manual.

Note: When mounting the blades, always wear work gloves.

1. Untwist the power cord to avoid tangling.
2. Remove Blade Cover (1).
3. Choose Comb (2-7) as appropriate to the clipping task at hand, and clip it onto the Clipper over top of the blades.
4. The Blade Lever (50) allows the operator to change the closeness setting of the cut without an additional attachment comb. At the top position, the blades will give the closest cut and leave the hair the shortest. Pushing the lever downward increases the cutting length. If hair jams the blades, switch the Blade Lever up and down rapidly to clear the blades. Before turning the Clipper off, rapidly move the Blade Lever from close cut to longer cut twice. This will clear trimmings from the Clipper.
5. Make sure Sliding Switch (45) is in OFF position prior to plugging the Clipper into an electrical outlet.
6. Plug the Clipper into any standard 120V electrical outlet, and push the Switch Cover (45) forward to turn the unit on.
7. Clean, brush, and dry the pet thoroughly before clipping or trimming.
8. To prevent accidents, turn off the appliance and disconnect its power supply after use. Inspect the Clipper, making sure it is free of hair, oil, or debris between the cutting blade teeth. Lubricate using the provided clipper oil. Turn the unit on to distribute the oil and to make sure it runs smoothly. Wipe off any excess oil. This should be done after each use. Clean, lubricate replace Blade Cover (1) and then store the appliance indoors out of the reach of children.

INSPECTION AND MAINTENANCE

WARNING

Before appliance inspection or maintenance, make sure the appliance's switch is turned off, the cord is unplugged, and the unit has cooled completely.

Do not use damaged appliances. If abnormal noise or vibration occurs, have the problem corrected before further use.

1. **BEFORE EACH USE**, inspect the general condition of the appliance. Check for loose screws, misalignment or binding of moving parts, cracked or broken parts, damaged electrical wiring, and any other condition that may affect its safe operation.
2. Blades should be oiled with the provided clipper oil every few haircuts to maintain the Clipper in peak condition. Do not use hair oil, grease, or any solvent on the Clipper. The solvent will evaporate and leave a residue that can slow down the blade's motion.

Blade Alignment

1. The Clipper comes oiled and aligned from the factory. Blades must be realigned after they have been removed for cleaning or replacement.
2. To realign blades, match the upper and lower blades teeth up, point for point. The end of the top blade teeth should be approximately 1.2mm (just under 1/16") back from the bottom blade.
3. If blade alignment is incorrect: add a few drops of oil to the blades, turn the Clipper on for a few moments, then turn off and unplug.

4. Loosen screws slightly and readjust.
5. Tighten screws after blade is aligned.

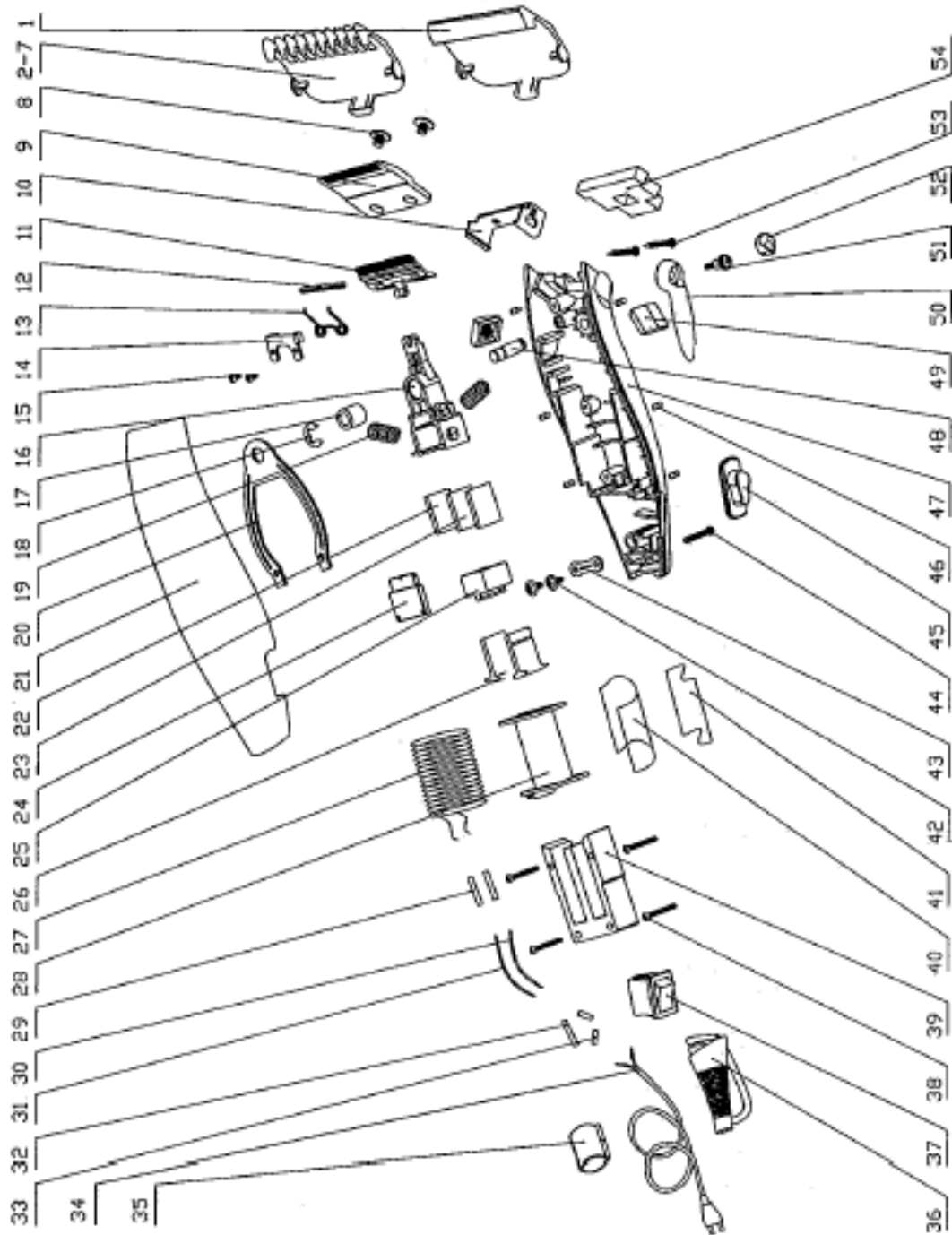
PLEASE READ THE FOLLOWING CAREFULLY

THE MANUFACTURER AND/OR DISTRIBUTOR HAS PROVIDED THE PARTS LIST AND ASSEMBLY DIAGRAM IN THIS MANUAL AS A REFERENCE TOOL ONLY. NEITHER THE MANUFACTURER OR DISTRIBUTOR MAKES ANY REPRESENTATION OR WARRANTY OF ANY KIND TO THE BUYER THAT HE OR SHE IS QUALIFIED TO MAKE ANY REPAIRS TO THE PRODUCT, OR THAT HE OR SHE IS QUALIFIED TO REPLACE ANY PARTS OF THE PRODUCT. IN FACT, THE MANUFACTURER AND/OR DISTRIBUTOR EXPRESSLY STATES THAT ALL REPAIRS AND PARTS REPLACEMENTS SHOULD BE UNDERTAKEN BY CERTIFIED AND LICENSED TECHNICIANS, AND NOT BY THE BUYER. THE BUYER ASSUMES ALL RISK AND LIABILITY ARISING OUT OF HIS OR HER REPAIRS TO THE ORIGINAL PRODUCT OR REPLACEMENT PARTS THERETO, OR ARISING OUT OF HIS OR HER INSTALLATION OF REPLACEMENT PARTS THERETO.

PARTS LIST

| Part | Description | Qty | Part | Description | Qty |
|------|----------------------|-----|------|----------------------------|-----|
| 1 | Blade Cover | 1 | 30 | Orange Inner Wire Lead | 1 |
| 2 | Comb #1 | 1 | 31 | Black Inner Wire Lead | 1 |
| 3 | Comb #2 | 1 | 32 | Heat Shrink Tube | 1 |
| 4 | Comb #3 | 1 | 33 | Heat Shrink Tube | 2 |
| 5 | Comb #4 | 1 | 34 | Power Wire | 1 |
| 6 | Left Comb | 1 | 35 | Wire Clamp | 1 |
| 7 | Right Comb | 1 | 36 | Wire Protection | 1 |
| 8 | Screw | 2 | 37 | Switch | 1 |
| 9 | Fixed Blade | 1 | 38 | Screw | 4 |
| 10 | Blade Holder | 1 | 39 | Tri-Bar | 1 |
| 11 | Movable Blade | 1 | 40 | Brown Paper | 1 |
| 12 | Movable Spring | 1 | 41 | Gummed Paper | 1 |
| 13 | Movable Blade Spring | 1 | 42 | Screw | 2 |
| 14 | Movable Blade Holder | 1 | 43 | Filament Plate | 1 |
| 15 | Screw | 2 | 44 | Screw | 1 |
| 16 | Oscillating Lever | 1 | 45 | Sliding Switch | 1 |
| 17 | Axis Cover | 1 | 46 | Insert | 6 |
| 18 | Resist Ring | 1 | 47 | Lower Cover | 1 |
| 19 | Spring | 2 | 48 | Location Column | 1 |
| 20 | Holder | 1 | 49 | Shockproof Gasket | 2 |
| 21 | Upper Cover | 1 | 50 | Blade Lever | 1 |
| 22 | Iron Sheet | 1 | 51 | Screw | 1 |
| 23 | Magnet | 1 | 52 | Plug | 1 |
| 24 | Hold Frame Cover | 1 | 53 | Screw | 2 |
| 25 | Hold Frame | 1 | 54 | Sponge | 1 |
| 26 | T Fixture | 1 | 55 | Clipper Oil (not shown) | 1 |
| 27 | Lacquered Wire | 1 | 56 | Scissors (not shown) | 1 |
| 28 | Loop Holder | 1 | 57 | Cleaning Brush (not shown) | 1 |
| 29 | Yellow Wax Tube | 2 | | | |

ASSEMBLY DIAGRAM



Record Product's Serial Number Here: _____

Note: If product has no serial number, record month and year of purchase instead.

Note: Some parts are listed and shown for illustration purposes only, and are not available individually as replacement parts.

Free Manuals Download Website

<http://myh66.com>

<http://usermanuals.us>

<http://www.somanuals.com>

<http://www.4manuals.cc>

<http://www.manual-lib.com>

<http://www.404manual.com>

<http://www.luxmanual.com>

<http://aubethermostatmanual.com>

Golf course search by state

<http://golfingnear.com>

Email search by domain

<http://emailbydomain.com>

Auto manuals search

<http://auto.somanuals.com>

TV manuals search

<http://tv.somanuals.com>