

# CHICAGO

## Electric<sup>®</sup>Power Tools

### HIGH VELOCITY 24" FLOOR FAN

**Model 93532(FE-60D3fOL)**

#### SET UP AND OPERATING INSTRUCTIONS



Visit our website at: <http://www.harborfreight.com>



**Read this material before using this product.  
Failure to do so can result in serious injury.  
SAVE THIS MANUAL.**

Copyright<sup>®</sup> 2005 by Harbor Freight Tools<sup>®</sup>. All rights reserved. No portion of this manual or any artwork contained herein may be reproduced in any shape or form without the express written consent of Harbor Freight Tools. Diagrams within this manual may not be drawn proportionally. Due to continuing improvements, actual product may differ slightly from the product described herein. Tools required for assembly and service may not be included.

**For technical questions or replacement parts, please call 1-800-444-3353.**

Revised Manual 09b, 09I

---

## PRODUCT SPECIFICATIONS

---

Fan Blade	24"
Fan Guard Diameter	24-1/4"
Air Delivery	7,200 CFM
Motor	120 V~, Single Phase Continuous Duty
Amperage	High -1.85, Low - 1.45



### SAVE THIS MANUAL

You will need this manual for the safety warnings and precautions, assembly, operating, inspection, maintenance and cleaning procedures, parts list and assembly diagram. Keep your invoice with this manual. Write the invoice number on the inside of the front cover. Keep this manual and invoice in a safe and dry place for future reference.

---

## GENERAL SAFETY RULES

---

 **WARNING!**

**READ AND SAVE THESE INSTRUCTIONS**  
**Failure to follow all instructions listed below may result in electric shock, fire, and/or serious injury.**  
**SAVE THESE INSTRUCTIONS**

### WORK AREA

1. **Keep your work area clean and well lit.** Cluttered benches and dark areas invite accidents.
2. **Do not operate the fan in explosive atmospheres, such as in the presence of flammable liquids, gases, or dust.** Fans may create sparks which may ignite the dust or fumes. Do not use this Fan to ventilate flammable gas, dust, or mist.
3. **Keep children away while operating the Fan.** Children may insert fingers or other objects through the guard, resulting in severe personal injury.

### ELECTRICAL SAFETY

1. **Grounded fans must be plugged into an outlet properly installed and grounded in accordance with all codes and ordinances. Never remove the grounding prong or modify the plug in any way. Do not use any adapter plugs. Check with a qualified electrician if you are in doubt as to whether the outlet is properly grounded.** If the fan should electrically malfunction or break down, grounding provides a low resistance path to carry electricity away from the user.

2. **WARNING: To reduce the risk of fire or electric shock, do not use this fan with any solid state speed control device.**
3. **Avoid body contact with grounded surfaces such as pipes, radiators, ranges, and refrigerators.** There is an increased risk of electric shock if your body is grounded.
4. **WARNING: To reduce the risk of fire or electric shock, do not expose this fan to water or rain.**
5. **Do not abuse the Power Cord. Never use the Power Cord to carry the fan or pull the Plug from an outlet. Keep the Power Cord away from heat, oil, sharp edges, or moving parts. Replace damaged Power Cords immediately. Damaged Power Cords increase the risk of electric shock.**

### **PERSONAL SAFETY**

1. **Be sure the fan is on a stable, flat surface when in operation.**
2. **Dress properly. Do not wear loose clothing or jewelry. Contain long hair. Keep your hair, clothing, and gloves away from moving parts.** Loose clothes, jewelry, or long hair can be caught in moving parts.
3. **Avoid accidental starting. Be sure the Power Switch is off before plugging in.**

### **FAN USE AND CARE**

1. **Do not use the Fan if the Power Switch does not turn it on or off.**
2. **Disconnect the Power Cord Plug from the power source before making any adjustments, changing accessories, or storing the fan.** Such preventive safety measures reduce the risk of starting the fan accidentally.
3. **Store the fan out of reach of children and other untrained persons.** Fans are dangerous in the hands of untrained users.
4. **Check for misalignment or binding of moving parts, breakage of parts, and any other condition that may affect the fan's operation. If damaged, have the fan serviced before using.**

### **SERVICE**

1. **Fan service must be performed only by qualified repair personnel.** Service or maintenance performed by unqualified personnel could result in a risk of injury. If the Blade Guard is removed for service, it must be replaced before resuming operation.

2. **When servicing a fan, use only identical replacement parts. Follow instructions in the “*Inspection, Maintenance, And Cleaning*” section of this manual.** Use of unauthorized parts or failure to follow maintenance instructions may create a risk of electric shock or injury.

### **SPECIFIC SAFETY RULES**

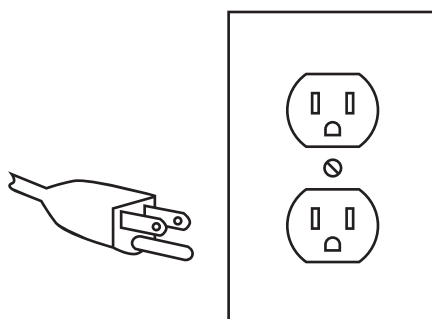
1. **Maintain labels and nameplates on the Fan.** These carry important information. If unreadable or missing, contact Harbor Freight Tools for a replacement.
2. **Always wear ANSI-approved safety impact eye goggles when operating the Fan.** Using personal safety devices reduce the risk for injury. Safety impact eye goggles are available from Harbor Freight Tools.
3. **Maintain a safe working environment.** Keep the work area well lit. Make sure there is adequate surrounding workspace. Always keep the work area free of obstructions, grease, oil, trash, and other debris. This Fan can pick up and propel small objects (such as sand). Do not use this product in a damp or wet location.
4. **Always keep the Power Cord (8) and any extension cords away from moving blade on the Fan.**
5. **Never leave the Fan unattended when it is plugged into an electrical outlet.** Turn off the Fan and unplug it from its electrical outlet before leaving.
6. **Keep all personal objects away from the Fan blade.** Make sure hair, fingers, and loose clothing do not come in contact with the Fan blade. Serious injury may result.
7. **WARNING!** People with pacemakers should consult their physician(s) before using this product. Electromagnetic fields in close proximity to a heart pacemaker could cause interference to or failure of the pacemaker.
8. **DO NOT use the fan in windows.** Rain and moisture may create an electrical hazard.
9. **WARNING: Be sure the front and rear GUARDS are firmly secured by the screws provided.**
10. People with pacemakers should consult their physician(s) before use. Electromagnetic fields in close proximity to heart pacemaker could cause pacemaker interference or pacemaker failure.
11. **WARNING:** Handling the cord on this product will expose you to lead, a chemical known to the State of California to cause cancer, and birth defects or other reproductive harm. Wash hands after handling. (California Health & Safety Code § 25249.5, *et seq.*)

## GROUNDING

### **WARNING!**

Improperly connecting the grounding wire can result in the risk of electric shock. Check with a qualified electrician if you are in doubt as to whether the outlet is properly grounded. Do not modify the power cord plug provided with the fan. Never remove the grounding prong from the plug. Do not use the fan if the power cord or plug is damaged. If damaged, have it repaired by a service facility before use. If the plug will not fit the outlet, have a proper outlet installed by a qualified electrician.

### Grounded Tools: Tools with Three Prong Plugs



**3-Prong Plug and Outlet**

1. Tools marked with “Grounding Required” have a three wire cord and three prong grounding plug. The plug must be connected to a properly grounded outlet. If the tool should electrically malfunction or break down, grounding provides a low resistance path to carry electricity away from the user, reducing the risk of electric shock. **(See 3-Prong Plug and Outlet.)**
2. The grounding prong in the plug is connected through the green wire inside the cord to the grounding system in the tool. The green wire in the cord must be the only wire connected to the tool’s grounding system and must never be attached to an electrically “live” terminal. **(See 3-Prong Plug and Outlet.)**
3. The tool must be plugged into an appropriate outlet, properly installed and grounded in accordance with all codes and ordinances. The plug and outlet should look like those in the preceding illustration. **(See 3-Prong Plug and Outlet.)**

## EXTENSION CORDS

1. **Grounded** fans require a three wire extension cord.
2. As the distance from the supply outlet increases, you must use a heavier gauge extension cord. Using extension cords with inadequately sized wire causes a seri-






ous drop in voltage, resulting in loss of power and possible fan damage.  
**(See Table A.)**

3. The smaller the gauge number of the wire, the greater the capacity of the cord. For example, a 14 gauge cord can carry a higher current than a 16 gauge cord.  
**(See Table A.)**
4. When using more than one extension cord to make up the total length, make sure each cord contains at least the minimum wire size required. **(See Table A.)**
5. If you are using one extension cord for more than one fan, add the nameplate amperes and use the sum to determine the required minimum cord size.  
**(See Table A.)**
6. If you are using an extension cord outdoors, make sure it is marked with the suffix "W-A" ("W" in Canada) to indicate it is acceptable for outdoor use.
7. Make sure your extension cord is properly wired and in good electrical condition. Always replace a damaged extension cord or have it repaired by a qualified electrician before using it.
8. Protect your extension cords from sharp objects, excessive heat, and damp or wet areas.

RECOMMENDED MINIMUM WIRE GAUGE FOR EXTENSION CORDS* (120/240 VOLT)					
NAMEPLATE AMPERES (at full load)	EXTENSION CORD LENGTH				
	25'	50'	75'	100'	150'
0 – 2.0	18	18	18	18	16
2.1 – 3.4	18	18	18	16	14
3.5 – 5.0	18	18	16	14	12
5.1 – 7.0	18	16	14	12	12
7.1 – 12.0	18	14	12	10	-
12.1 – 16.0	14	12	10	-	-
16.1 – 20.0	12	10	-	-	-

**TABLE A** \* Based on limiting the line voltage drop to five volts at 150% of the rated amperes.

### Symbology

	Double Insulated
	Canadian Standards Association
	Underwriters Laboratories, Inc.
	Volts Alternating Current
	Amperes
$n_0$ xxxx/min.	No Load Revolutions per Minute (RPM)

---

## **UNPACKING**

---

When unpacking, check to make sure all the parts shown on the **Parts List on page 8** are included. If any parts are missing or broken, please call Harbor Freight Tools at the number shown on the cover of this manual as soon as possible.

---

## **ASSEMBLY AND OPERATING INSTRUCTIONS**

---

**NOTE:** For additional information regarding the parts listed in the following pages, refer to the **Assembly Diagram on page 9**.

**Warning!** Always make sure the Power Cord of the Fan is unplugged from its electrical outlet *prior* to making any adjustments to the fan.

**Warning!** To reduce the risk of fire or electric shock, do not use this fan with any solid-state speed control device.

### **ASSEMBLY**

1. Attach the two Wheels (10) to the Drum (3) using three Bolts (11) per Wheel.
2. Assemble the Base (12) to the Drum (3) using the four Bolts (11).
3. Inspect the fully assembled fan with it resting on its wheels and the base.  
**IMPORTANT: The Pads at the bottom of the Base *MUST* sit flat on the floor. If they do not, remove the Base (12), turn it 180°, and reinstall it.**


### **OPERATION**

1. Situate the Fan in a dry location out of children's reach and away from normal room traffic.
2. Plug in the Power Cord (8).
3. Set the Control (7) to either LOW or HIGH, depending on your preference.
4. When finished, set the Control (7) to OFF.

---

## INSPECTION, MAINTENANCE, AND CLEANING

---

1.  **WARNING!** Make sure the Control (7) of the Fan is in its “OFF” position and that the Fan is unplugged from its electrical outlet before performing any inspection, maintenance, or cleaning procedures.
2. **BEFORE EACH USE**, inspect the general condition of the Fan. Check for loose screws, misalignment or binding of moving parts, cracked or broken parts, damaged electrical wiring, and any other condition that may affect its safe operation. If abnormal noise or vibration occurs, have the problem corrected before further use. **Do not use damaged equipment.**
3. Periodically, check to see that the Blade (4) has no dirt or debris accumulating on its surface. If necessary, use compressed air to clean the unit.
4. Before each use, check that the Power Cord (8) has no tears, frays, or cracks. Do not use the Fan if you find any irregularities. Contact a qualified service technician.

---

## PARTS LIST

---

Part	Description	Qty.
1	Screw	12
2	Front Guard	1
3	Drum	1
4	Blade	1
5	Set Screw	1
6	Rear Guard	1
7	Control	1
8	Power Cord	1
9	Motor	1
10	Wheel	2
11	Bolts	10
12	Base	1

### PLEASE READ THE FOLLOWING CAREFULLY

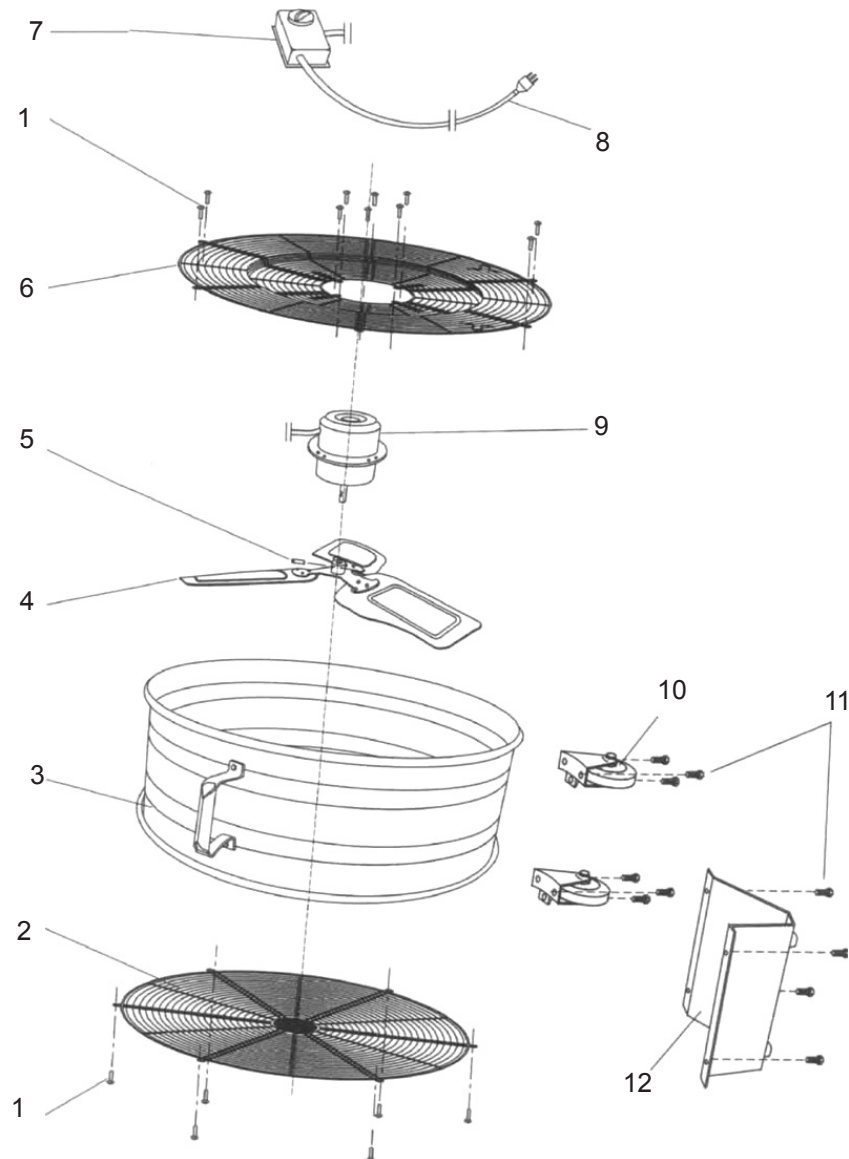
THE MANUFACTURER AND/OR DISTRIBUTOR HAS PROVIDED THE PARTS LIST AND ASSEMBLY DIAGRAM IN THIS MANUAL AS A REFERENCE TOOL ONLY. NEITHER THE MANUFACTURER OR DISTRIBUTOR MAKES ANY REPRESENTATION OR WARRANTY OF ANY KIND TO THE BUYER THAT HE OR SHE IS QUALIFIED TO MAKE ANY REPAIRS TO THE PRODUCT, OR THAT HE OR SHE IS QUALIFIED TO REPLACE ANY PARTS OF THE PRODUCT. IN FACT, THE MANUFACTURER AND/OR DISTRIBUTOR EXPRESSLY STATES THAT ALL REPAIRS AND PARTS REPLACEMENTS SHOULD BE UNDERTAKEN BY CERTIFIED AND LICENSED TECHNICIANS, AND NOT BY THE BUYER. THE BUYER ASSUMES ALL RISK AND LIABILITY ARISING OUT OF HIS OR HER REPAIRS TO THE ORIGINAL PRODUCT OR REPLACEMENT PARTS THERETO, OR ARISING OUT OF HIS OR HER INSTALLATION OF REPLACEMENT PARTS THERETO.



---

# ASSEMBLY DIAGRAM

---



**NOTE:** Some parts are listed and shown for illustration purposes only, and are not available individually as replacement parts.

## Free Manuals Download Website

<http://myh66.com>

<http://usermanuals.us>

<http://www.somanuals.com>

<http://www.4manuals.cc>

<http://www.manual-lib.com>

<http://www.404manual.com>

<http://www.luxmanual.com>

<http://aubethermostatmanual.com>

Golf course search by state

<http://golfingnear.com>

Email search by domain

<http://emailbydomain.com>

Auto manuals search

<http://auto.somanuals.com>

TV manuals search

<http://tv.somanuals.com>