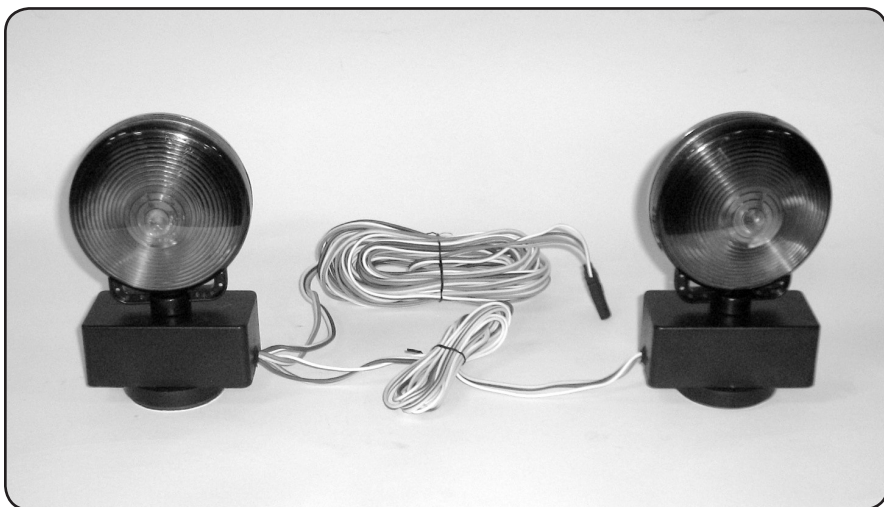




MAGNETIC TOW LIGHT KIT

Model 96933

SET UP AND OPERATING INSTRUCTIONS



Diagrams within this manual may not be drawn proportionally.

Due to continuing improvements, actual product may differ slightly from the product described herein.

Distributed exclusively by Harbor Freight Tools®.

3491 Mission Oaks Blvd., Camarillo, CA 93011

Visit our website at: <http://www.harborfreight.com>



**Read this material before using this product.
Failure to do so can result in serious injury.
SAVE THIS MANUAL.**

Copyright© 2007 by Harbor Freight Tools®. All rights reserved. No portion of this manual or any artwork contained herein may be reproduced in any shape or form without the express written consent of Harbor Freight Tools.

For technical questions or replacement parts, please call 1-800-444-3353.

SAVE THIS MANUAL

Keep this manual for the safety warnings and precautions, assembly, operating, inspection, maintenance and cleaning procedures. Write the product's serial number in the back of the manual near the assembly diagram (or month and year of purchase if product has no number). Keep this manual and the receipt in a safe and dry place for future reference.

IMPORTANT SAFETY INFORMATION

In this manual, on the labeling, and all other information provided with this product:



This is the safety alert symbol. It is used to alert you to potential personal injury hazards. Obey all safety messages that follow this symbol to avoid possible injury or death.

DANGER

DANGER indicates a hazardous situation which, if not avoided, will result in death or serious injury.

WARNING

WARNING indicates a hazardous situation which, if not avoided, could result in death or serious injury.

CAUTION

CAUTION, used with the safety alert symbol, indicates a hazardous situation which, if not avoided, could result in minor or moderate injury.

NOTICE

NOTICE is used to address practices not related to personal injury.

CAUTION

CAUTION, without the safety alert symbol, is used to address practices not related to personal injury.

SAFETY RULES



WARNING! Read all instructions

Failure to follow all instructions listed below may result in electric shock, fire, and/or serious injury.

SAVE THESE INSTRUCTIONS

1. Obey DOT and all other applicable regulations regarding installation and use. Observe posted speed limits to prevent lights from blowing off.
2. Securely attach lights to vehicle before moving. Loose lights are a traffic hazard.

3. **Thoroughly test vehicle lights and tow lights before use.**
4. Mount lights in proper orientation. Amber lights must face forward and red lights must face backward. Improper orientation can confuse or distract drivers, causing a traffic hazard.
5. Install on a 12 V negative ground circuit only. Installing on different circuit can result in electric shock, fire, or property damage.
6. Turn off vehicle and set the parking brake before installation or use.
7. Do not use on marine trailers (such as boat trailers). Not waterproof.
8. Wear ANSI-approved impact safety goggles and heavy-duty work gloves during installation and use.
9. Do not modify the Towing Light Kit and do not use the Towing Light Kit for a purpose for which it was not intended.
10. Inspect before use; do not use if parts loose or damaged. Inspect wires and connections for insulation damage or loose wires and repair before use.
11. People with pacemakers should consult their physician(s) before use. Electro-magnetic fields in close proximity to heart pacemaker could cause pacemaker interference or pacemaker failure.
12. This product is not a toy. Keep it out of reach of children.
13. Check light position and function regularly when towing, especially on rough or uneven surfaces, or in windy conditions. The magnets may loose their grip on the vehicle under extreme circumstances.
14. Remove conductive articles (such as metal jewelry, watches, and other items) before installing light kit. Conductive objects can cause an electrical short resulting in fire, property damage, or personal injury.
15. The warnings, precautions, and instructions discussed in this instruction manual cannot cover all possible conditions and situations that may occur. It must be understood by the operator that common sense and caution are factors which cannot be built into this product, but must be supplied by the operator.



SAVE THESE INSTRUCTIONS.

UNPACKING

When unpacking, check to make sure that the item is intact and undamaged. If any parts are missing or broken, please call Harbor Freight Tools at the number shown on the cover of this manual as soon as possible.

SPECIFICATIONS

Electrical Requirements	12 V ^{DC} / 4.3 A
Bulb Type	12 V / 21/5 W
Connector	4-way Flat

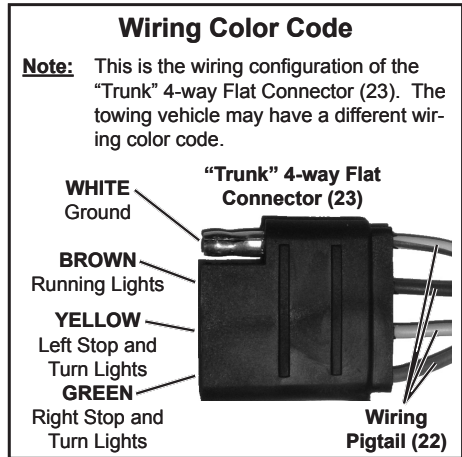
WIRING

Note: Some towing vehicles may already have a 4-way Flat Connector, “Trunk” plug wired in. For those vehicles, skip the following wiring instructions.

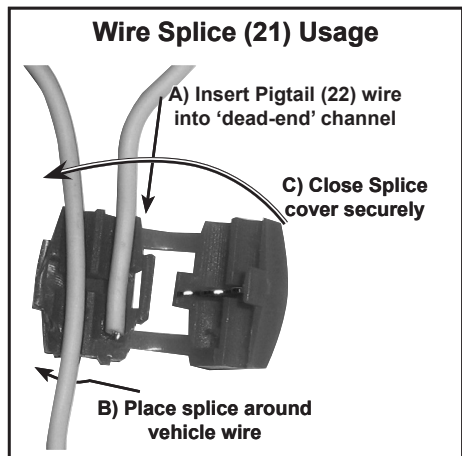


If you do not have experience doing this type of automotive electrical wiring or if the wiring in your vehicle differs from that explained below, have an automotive service technician connect the wiring.

1. Identify the towing vehicle’s wires in the trunk that correspond to the circuits indicated in the Wiring Color Code diagram to the right. The white ground wire from the Pigtail (22) may be connected to a bolt or appropriate component on the vehicle to establish a ground instead of a ground wire.



2. Connect the wires from the Wiring Pigtail (22) to the proper vehicle circuit wires using Wire Splices (21). No stripping or cutting is usually required to connect wires using the included Splices. Follow these three steps and refer to the illustration to the right:
 - a. Insert the end of the Pigtail (22) wire into the ‘dead-end’ channel of the Splice. Insert the wire all the way to the end of the channel as shown.
 - b. Place the Splice around the correct vehicle circuit wire.
 - c. Make sure both wires stay properly in place while the cover is closed until it snaps together.
3. Verify that all wires are held securely.



4. Plug the "Trunk" Connector (23) into the "Trailer" Connector (18).
5. **▲WARNING! If the Wire Splices (21) are used improperly and damage the vehicle's wiring, the vehicles rear lights may fail, resulting in a traffic hazard. Have an assistant operate the vehicle's lights while you carefully check that the vehicle lights and the towing lights all work properly after installation.** If any function of the vehicle or towing lights does not work, do not drive the vehicle. Carefully inspect the splice connection and the circuit that failed and repair the problem and retest before use.
6. Disconnect the "Trailer" Connector (18) if the light kit is not going to be used yet.

SET UP

1. To help avoid scratches, clean the mounting locations and clean the protective labels under the lights.
2. Set the lights on the back of the vehicle being towed so that the RED side of each light faces backwards. Set the light that has a green wire on the right side and the light that does not have a green wire on the left side.
3. Make sure all wires are secured with enough slack to prevent binding when turning, but controlled enough to prevent roadway or moving part contact.
3. Plug the "Trunk" Connector into the "Trailer" Connector.
4. **▲WARNING! Have an assistant operate the vehicle's lights while you carefully check that the vehicle lights and the towing lights all work properly.**
 - Both tow lights should illuminate when the towing vehicle's running lights are switched on.
 - The tow lights should both light brightly as you apply the brake.
 - The tow light with a green wire should blink brightly with the right turn signal.
 - The tow light without a green wire should blink brightly with the left turn signal.

If ANY function of the vehicle lights or towing lights does not work, do not drive the towing vehicle until all lights are repaired and retested successfully.
5. The tow light kit is now ready for use. It will automatically illuminate when turn and brake signals in the towing vehicle are used.
6. **▲WARNING! Check light position and function regularly when towing, especially on rough or uneven surfaces.** The magnets cannot hold the lights to the vehicle in extreme circumstances.
7. After towing, disconnect "Trailer" Connector, remove tow lights from towed vehicle, clean with a moist cloth, and store in dry location out of reach of children.

BULB REPLACEMENT

▲CAUTION

Wear ANSI-approved safety goggles and heavy-duty work gloves when replacing the bulb.

1. Make sure the burned-out bulb has cooled completely.
2. Gently pry off a lens covering the burned out bulb using plastic pry tools (not included) to prevent damage.
3. Press the burned-out bulb into the socket slightly and rotate it counterclockwise to release it. Remove the burned-out bulb.
4. Insert a new 12V/21/5W bulb into the socket and secure it by turning clockwise while pushing it into the socket.
5. **Note:** The bulb has offset pins that allow it to be installed only one way. If it does not properly and easily fit into place, then turn it around.
6. Gently snap the lens back in place, and test the lights to ensure proper operation before use.

PARTS LIST

Part	Description	Q'ty
1	Amber Front Lens	2
2	Red Rear Lens	2
3	Bracket	2
4	Bulb	2
5	Socket	2
6	Threaded Shaft	2
7	Shell	2
8	Spring Washer	2
9	Flat Washer	2
10	Ground Terminal	2
11	Nut	2
12	Screw	2

Part	Description	Q'ty
13	Cover	2
14	Magnet	2
15	Nut	2
16	Screw	8
17	Power Cord	1
18	"Trailer" 4-way Flat Connector	1
19	Left-Right Cord	1
20	Bulb Wire	4
21	Wire Splices	4
22	Wiring Pigtail	1
23	"Trunk" 4-way Flat Connector	1
24	Protective Label	2

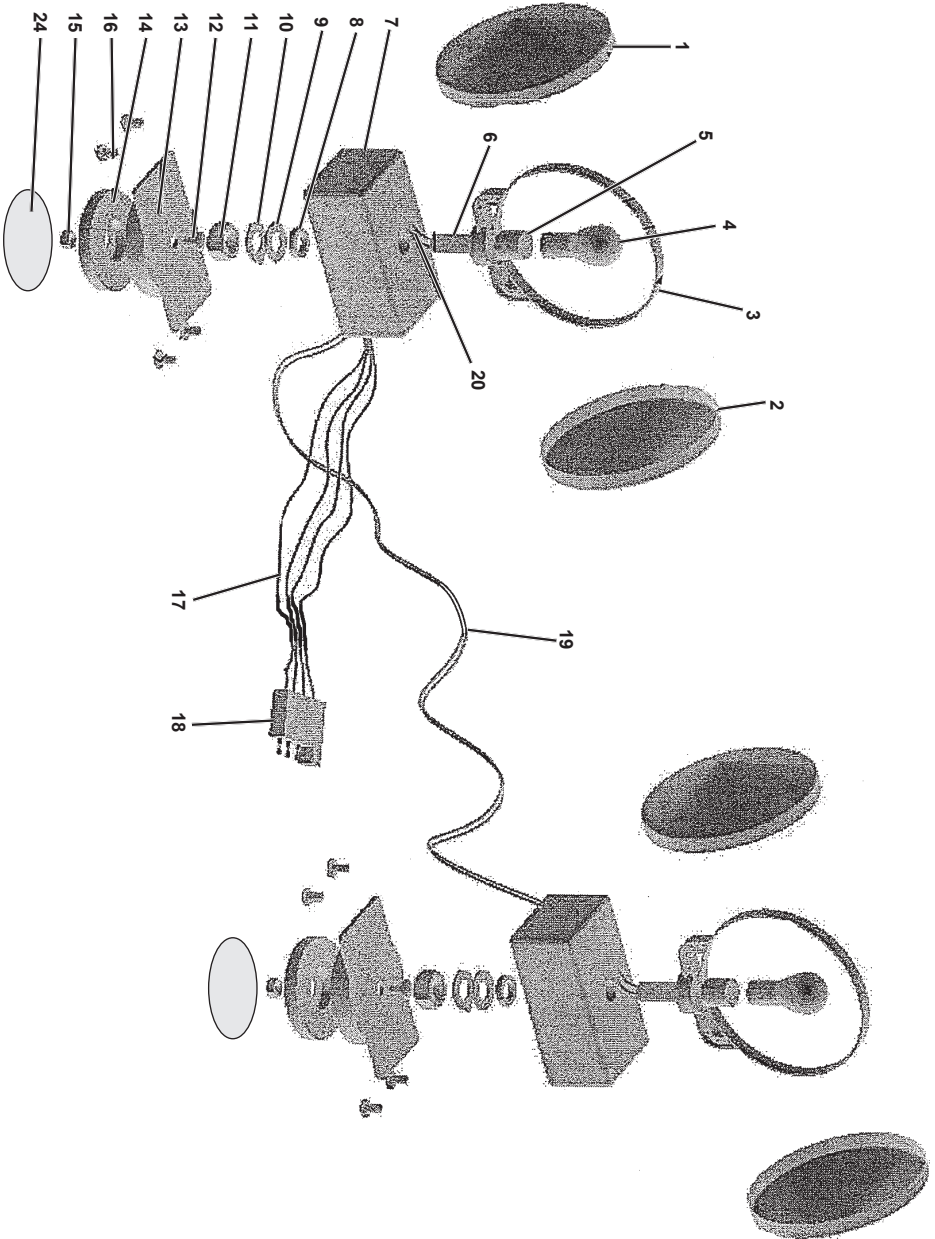
Note: Parts 21-23 not shown on diagram.

Record Product's Serial Number Here: _____

Note: If product has no serial number, record month and year of purchase instead.

Note: Some parts are listed and shown for illustration purposes only, and are not available individually as replacement parts.

ASSEMBLY DIAGRAM



LIMITED 90 DAY WARRANTY

Harbor Freight Tools Co. makes every effort to assure that its products meet high quality and durability standards, and warrants to the original purchaser that this product is free from defects in materials and workmanship for the period of 90 days from the date of purchase. This warranty does not apply to damage due directly or indirectly, to misuse, abuse, negligence or accidents, repairs or alterations outside our facilities, criminal activity, improper installation, normal wear and tear, or to lack of maintenance. We shall in no event be liable for death, injuries to persons or property, or for incidental, contingent, special or consequential damages arising from the use of our product. Some states do not allow the exclusion or limitation of incidental or consequential damages, so the above limitation of exclusion may not apply to you. THIS WARRANTY IS EXPRESSLY IN LIEU OF ALL OTHER WARRANTIES, EXPRESS OR IMPLIED, INCLUDING THE WARRANTIES OF MERCHANTABILITY AND FITNESS.

To take advantage of this warranty, the product or part must be returned to us with transportation charges prepaid. Proof of purchase date and an explanation of the complaint must accompany the merchandise. If our inspection verifies the defect, we will either repair or replace the product at our election or we may elect to refund the purchase price if we cannot readily and quickly provide you with a replacement. We will return repaired products at our expense, but if we determine there is no defect, or that the defect resulted from causes not within the scope of our warranty, then you must bear the cost of returning the product.

This warranty gives you specific legal rights and you may also have other rights which vary from state to state.

3491 Mission Oaks Blvd. • PO Box 6009 • Camarillo, CA 93011 • (800) 444-3353

PLEASE READ THE FOLLOWING CAREFULLY

THE MANUFACTURER AND/OR DISTRIBUTOR HAS PROVIDED THE PARTS LIST AND ASSEMBLY DIAGRAM IN THIS MANUAL AS A REFERENCE TOOL ONLY. NEITHER THE MANUFACTURER OR DISTRIBUTOR MAKES ANY REPRESENTATION OR WARRANTY OF ANY KIND TO THE BUYER THAT HE OR SHE IS QUALIFIED TO MAKE ANY REPAIRS TO THE PRODUCT, OR THAT HE OR SHE IS QUALIFIED TO REPLACE ANY PARTS OF THE PRODUCT. IN FACT, THE MANUFACTURER AND/OR DISTRIBUTOR EXPRESSLY STATES THAT ALL REPAIRS AND PARTS REPLACEMENTS SHOULD BE UNDERTAKEN BY CERTIFIED AND LICENSED TECHNICIANS, AND NOT BY THE BUYER. THE BUYER ASSUMES ALL RISK AND LIABILITY ARISING OUT OF HIS OR HER REPAIRS TO THE ORIGINAL PRODUCT OR REPLACEMENT PARTS THERETO, OR ARISING OUT OF HIS OR HER INSTALLATION OF REPLACEMENT PARTS THERETO.

Free Manuals Download Website

<http://myh66.com>

<http://usermanuals.us>

<http://www.somanuals.com>

<http://www.4manuals.cc>

<http://www.manual-lib.com>

<http://www.404manual.com>

<http://www.luxmanual.com>

<http://aubethermostatmanual.com>

Golf course search by state

<http://golfingnear.com>

Email search by domain

<http://emailbydomain.com>

Auto manuals search

<http://auto.somanuals.com>

TV manuals search

<http://tv.somanuals.com>