

# **User Manual**

## **Foldable Keyboard for Pocket PC**



**Information in this document is subject to change without notice.**

**© 2003 Dell Inc. All rights reserved.**

Reproduction in any manner whatsoever without the written permission of Dell Computer Corporation is strictly forbidden.

Trademarks used in this text: *Dell* and the *DELL* logo are trademarks of Dell Computer Corporation; *Microsoft* and *ActiveSync* are registered trademarks of Microsoft Corporation.

Other trademarks and trade names may be used in this document to refer to either the entities claiming the marks and names or their products. Dell Computer Corporation disclaims any proprietary interest in trademarks and trade names other than its own.

## **Regulatory Compliance**

This device complies with Part 15 of the FCC Rules. Operation is subject to the following two conditions: (1) This device may not cause harmful interference, and (2) This device must accept any interference received, including interference that may cause undesired operation.

### **FCC statement**

#### **Tested to Comply**

This equipment has been tested and found to comply with the limits of a Class B digital device, pursuant to Part 15 of the FCC Rules. These limits are designed to provide reasonable protection against harmful interference in a residential installation. This equipment generates, uses, and can radiate radio frequency energy and if not installed and used in accordance with the instructions, may cause harmful interference to radio communications. However, there is no guarantee that interference will not occur in a particular installation. If this equipment does cause harmful interference to radio or television reception, which can be determined by turning the equipment off and on, the user is encouraged to try to correct the interference by one or more of the following measures:

- Reorient or relocate the receiving antenna.
- Increase the separation between the equipment and receiver.
- Move the computer away from the receiver.
- Connect the equipment into an outlet on a circuit different from that to which the receiver is connected.

# Contents

## Introduction

Specifications.....	3
Features.....	3

## Opening and Folding the Keyboard

Opening the Keyboard .....	4
Folding the Keyboard .....	5
Charging Function .....	6

## Installing the Keyboard Driver and Connecting the Keyboard

Installing the Keyboard Driver .....	6
Enabling the Keyboard .....	8
Connecting the Keyboard to Your Device .....	10

## Customizing Your Keyboard

Configuring the Keyboard .....	10
Keyboard Shortcuts .....	11
Assigning Hotkeys .....	14

## Frequently Asked Questions .....

## Technical Support .....

## Introduction

The foldable keyboard is a convenient and portable input accessory for your Pocket PC device.

## Specifications

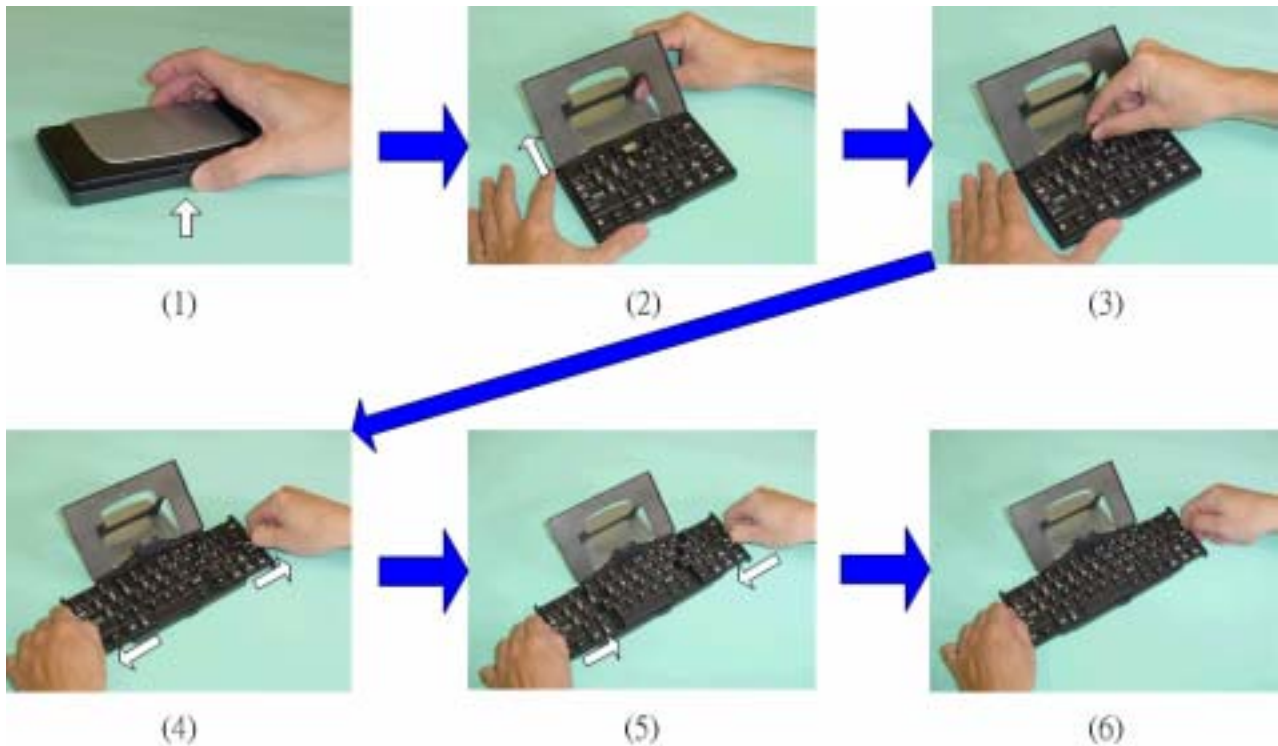
<b>Physical</b>	
Extended	250 x 177 x 73 mm (9.8 x 7 x 2.9 inches)
Closed	148 x 96 x 16.6 mm (5.8 x 3.8 x 0.7 inches)
Weight	200 g (0.4 lb)
<b>Environmental</b>	
Temperature endurance	60°C (140°F)
<b>Power Consumption</b>	
Operating	1 mA
Storage	3 $\mu$ A

## Features

- Easy connection to your Pocket PC device
- Keyboard shortcuts
- Convenient portability

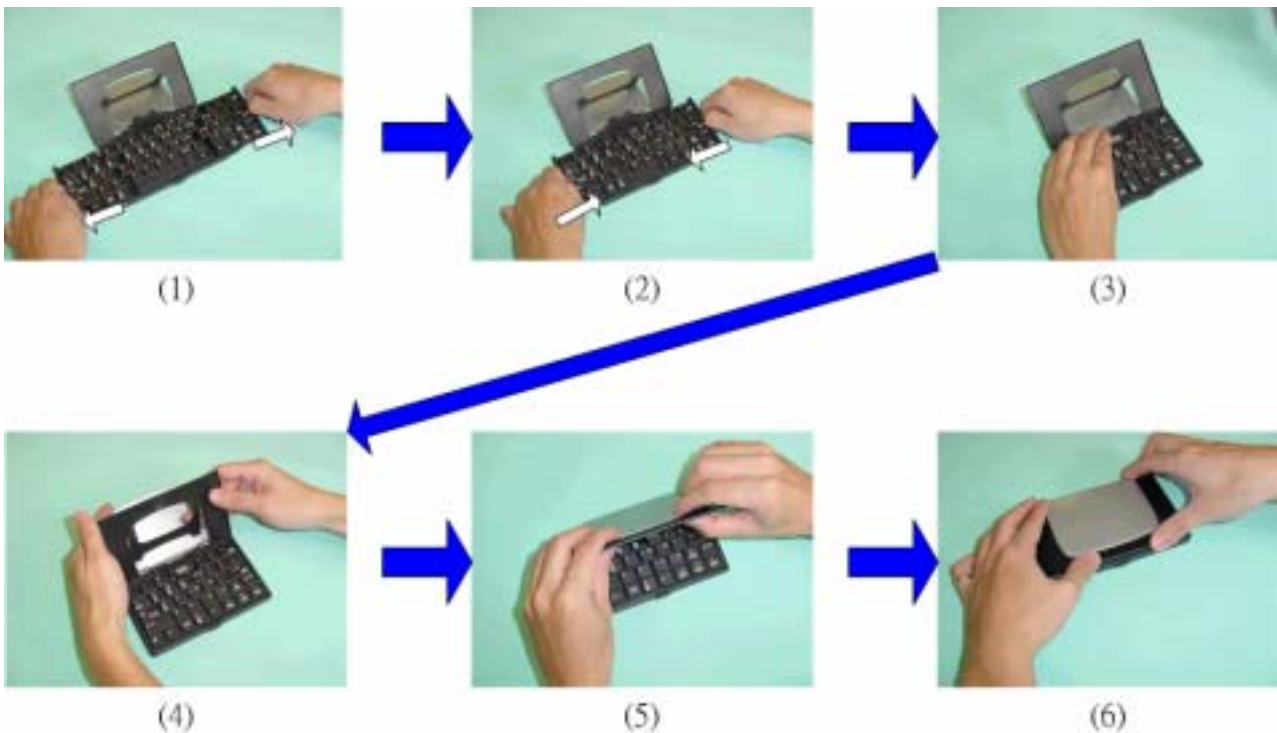
# Opening and Folding the Keyboard

## Opening the Keyboard



1. Press the button on the side of the keyboard. See Figure (1).
2. Raise the lid and stand until they are fully extended. See Figure (2).
3. Lift the keyboard connector stand to a fully upright position. See Figure (3).
4. Pull out the left and right sections of the keyboard until the middle section pops up. See Figure (4).
5. Push in the left and right sections of the keyboard until the keyboard snaps together. See Figures (5) and (6).

## Folding the Keyboard



1. Gently pull the left and right section of the keyboard apart. See Figure (1).
2. Push the left and right sections toward the center of the keyboard. The middle section automatically shifts down to make room for the left and right sections. **DO NOT** push down on the middle section. See Figure (2).
3. Flip down the keyboard connector stand until it is flat with the keyboard. See Figure (3).
4. Collapse the stand. See Figure (4).
5. Press together the lid and the upper frame. See Figure (5).
6. Press down on the cover until you feel it click into the closed position. See Figure (6).

## Charging Function



You can charge your device when it is connected to the keyboard.

## Installing and Enabling the Keyboard Driver

### Installing the Keyboard Driver

Before you install the keyboard driver, disable any other keyboard programs that you have installed on your device to prevent conflicts. Also, ensure that you have at least 100 KB of free memory to install the driver.

To install the driver:

1. Using the cradle or sync cable, connect the device to a computer.
2. Use Microsoft<sup>®</sup> ActiveSync<sup>®</sup> to establish a connection between the computer and the device.



3. Insert the driver CD or floppy disk into the appropriate drive.

4. Follow the instructions on the screen to install the driver.

If the CD does not autorun or if you are installing the driver from a floppy disk:

- a. Open My Computer and double-click the CD drive or floppy drive icon.
  - b. Open the folder for the language that you want to install.
  - c. Double-click the **setup.exe** file.
  - d. Follow the instructions on the screen to install the driver.
5. After the installation is complete, tap **Yes** to soft reset the device. If you tap **No**, the change will not take effect until the next soft reset.

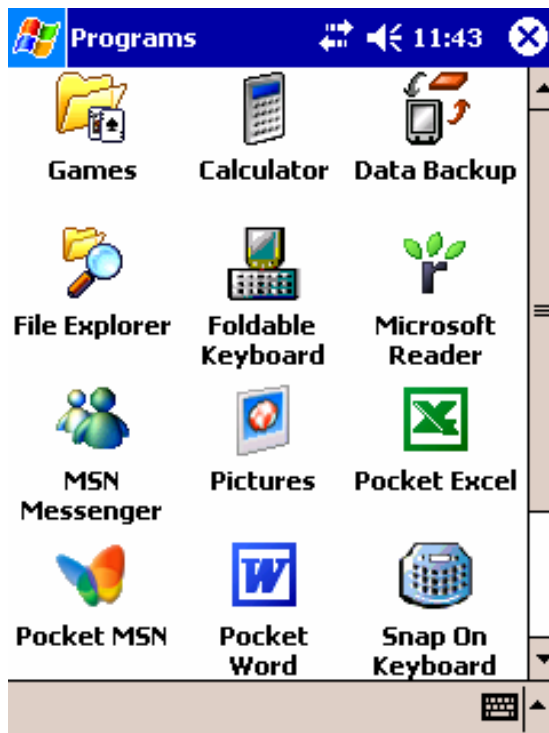


## Enabling the Keyboard

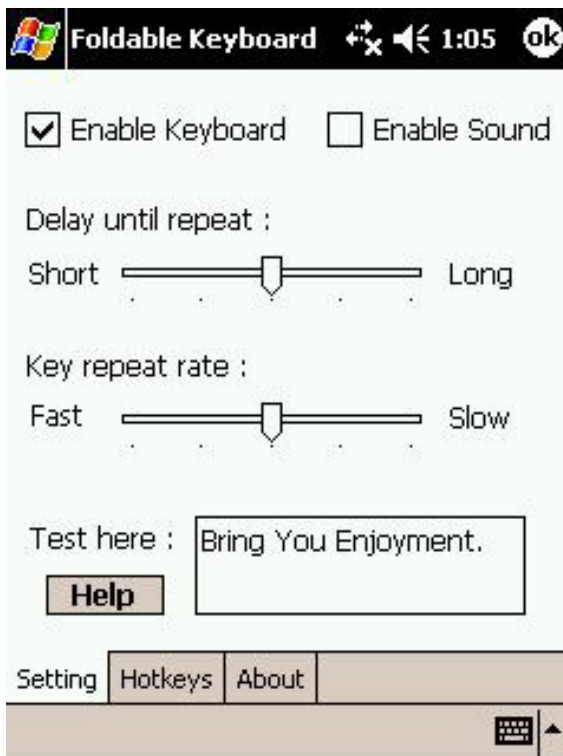
1. Turn on your device.
2. The Foldable keyboard will be detected and auto-enabled when connected with your device.
3. You could also enable the keyboard manually.
  - a. Tap the **Start** button and tap **Programs**.



b. Tap the **Foldable Keyboard** icon.



c. Tap to select **Enable Keyboard**.



## Connecting the Keyboard to Your Device

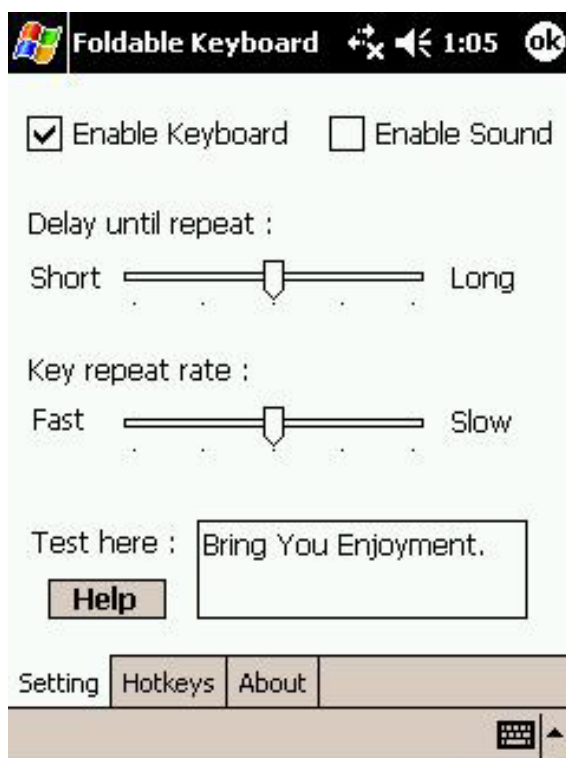
Align the connector on the bottom of the device with the connector on the keyboard. Slide the device down onto the connector as far as it will go.


To disconnect the keyboard, pull the device straight up and off the connector.

## Customizing Your Keyboard

### Configuring the Keyboard






1. On your device, tap the **Start** button, tap **Programs**, and then tap the **Foldable Keyboard** icon.
2. Tap the **Setting** tab.








- Tap the **Enable Sound** check box to hear a click every time you press a key.
- Use the **Delay until repeat** slider to lengthen or shorten the time the keyboard waits before repeating a pressed key.
- Use the **Key repeat rate** slider to speed up or slow down the rate at which the keyboard repeatedly displays a pressed key.
- Tap in the **Test here** field and type characters to test the keyboard.
- Tap  icon to call Help message.

## Keyboard Shortcuts

### U.S., U.K., Spanish, and Italian Keyboards

Keystroke Combination	Function
Shift (  ) + letter key	Capital letter
Shift (  ) + number key	Upper-left character on key
	Pocket PC device <b>Start</b> Menu
	Today
Fn + 	Home
Fn + Q	Inbox

Fn + W	Pocket Word
Fn + E	Pocket Excel
Fn + R	Calendar
Fn + T	Tasks
Fn + Y	Notes
Fn + A	Contacts
Fn + 	Pocket Internet Explorer
Fn + CapsLock	NumLock mode
Fn + Tab	Escape
Fn + Backspace	Off
Fn + number key	Hotkey function
Fn + Enter	OK
Fn + up arrow	Page up
Fn + down arrow	Page down
Fn + left arrow	Home
Fn + right arrow	End
Ctrl + C	Copy
Ctrl + V	Paste
Ctrl + X	Cut
Ctrl + A	Select all

Ctrl + Z	Undo
Shift (  ) + right arrow	Selects area to the right of the cursor
Shift (  ) + left arrow	Selects area to the left of the cursor
Shift (  ) + up arrow	Selects area above the cursor
Shift (  ) + down arrow	Selects area below the cursor

### French Keyboard

Most keyboard shortcuts on the French keyboard are the same as shortcuts on the U.S. keyboard. Exceptions include:

Keystroke Combination	Function
Fn + A	Inbox
Fn + Z	Pocket Word
Fn + Q	Contacts

### German Keyboard

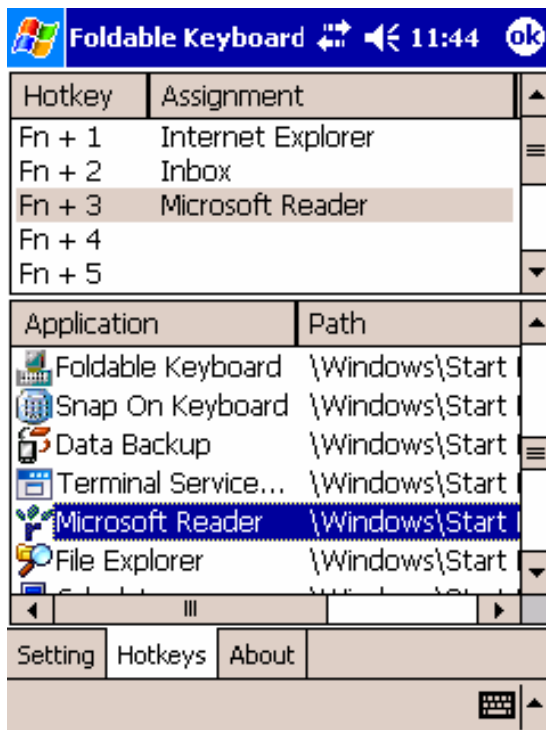
Most keyboard shortcuts on the German keyboard are the same as shortcuts on the U.S. keyboard. Exceptions include:

Keystroke Combination	Function
Fn + Z	Notes

## Assigning Hotkeys

You can launch programs using hotkey combinations, <Fn><0> through <Fn><9>. To configure hotkey:

1. On your device, tap the **Start** button, tap **Programs**, and tap the **Foldable Keyboard** icon.
2. Tap the **Hotkeys** tab.



3. In the top pane, tap the hotkey combination that you want to configure.
4. In the bottom pane, tap the program that you want to assign to the hotkey combination.
5. Tap the **OK** button at the top of the screen to save your changes and close the window.

# Frequently Asked Questions

## How do I uninstall the driver?

1. Tap the **Start** button→ **Settings**→ **System** tab→ **Remove Programs**.
2. Select **Foldable Keyboard** from the list of programs.
3. Press the **Reset** button on your device for several seconds.

## I pressed a key on the keyboard, but the letter did not register.

Ensure that the keyboard is securely connected to the device. If the connection is secure, uninstall the keyboard driver and then reinstall it.

## How can I make the display light stay on when I am typing?

1. Tap the **Start** button→ **Settings**→ **System** tab→ **Brightness**.
2. Tap the **Battery Power** tab.
3. Remove the check from **Dim if device is idle for more than**.
4. Tap **OK**.



## Customer Support:

See "Contacting Dell" in your Dell™ Axim™ *User's Guide* to find the appropriate contact information for obtaining customer assistance.

## Free Manuals Download Website

<http://myh66.com>

<http://usermanuals.us>

<http://www.somanuals.com>

<http://www.4manuals.cc>

<http://www.manual-lib.com>

<http://www.404manual.com>

<http://www.luxmanual.com>

<http://aubethermostatmanual.com>

Golf course search by state

<http://golfingnear.com>

Email search by domain

<http://emailbydomain.com>

Auto manuals search

<http://auto.somanuals.com>

TV manuals search

<http://tv.somanuals.com>