

GrooveSafari

Mini Wireless FM transmitter
with charger

Quick Start Guide:





Having difficulty setting up your product?

Please get in touch with our Cygnett support team on +61 (3) 9429 2552 or email help@cygnett.com

Warranty

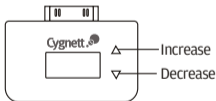
Cygnett 12 month Manufacturers Warranty

For product support, check the latest instructions & updates in the Support Section of our website: www.cygnett.com or email us at info@cygnett.com

Register online at www.cygnett.com to activate your warranty.

Thank you for purchasing Cygnett's GrooveSafari FM transmitter. Now you can broadcast your iPod tunes to your car stereo.

Getting Started	2
Tuning	3
Memory	4
Charging your iPod	5

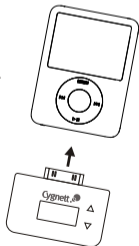


Step 1

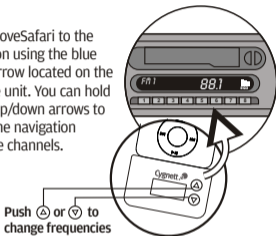
- A) Select a clear (unused) frequency on your car or home stereo FM radio. The ideal frequency will have static (no music) and static on the neighbouring channels. The GrooveSafari operates on wide range of FM channels (87.6Mhz to 107.9Mhz).



- B) Insert the GrooveSafari FM transmitter into the dock connector (at the base of your iPod). A frequency will be displayed on your GrooveSafari LCD screen.

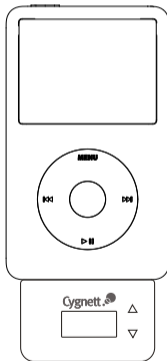


- C) Set the GrooveSafari to the same station using the blue up/down arrow located on the front of the unit. You can hold down the up/down arrows to speed up the navigation through the channels.



- You can view the frequency selected anytime by looking at the LCD display on the GrooveSafari.
- Ensure your radio is tuned into the same frequency.
- Ensure your car radio volume is turned up to the desired level and control your ipod as usual.
- The GrooveSafari will automatically switch off after 60 seconds if no signal is received.

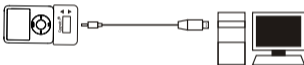
The GrooveSafari will automatically memorise the last FM frequency used and will transmit to that frequency when the GrooveSafari is re-inserted.



Your GrooveSafari includes a USB charging cable and can be charged while in use or sedentary via a powered USB output or via the car USB car adaptor.

A.) For USB charging:

Simply insert the plug end of the USB cable into the bottom of the GrooveSafari and insert the USB end into the USB port of your computer or Cygnett GroovePower Charger.



B) For car charging:

Simply insert the plug end of the USB cable into the bottom of the GrooveSafari and insert the USB end into the supplied car adaptor. Insert the car adaptor into the cigarette lighter plug to start powering your iPod from your car.



This device complies with Part 15 of FCC Rules. Operation is subject to the following conditions:

- (1) This device may not cause harmful interference, and
- (2) This device must accept any interference that may cause undesired operation.
- (3) This equipment may be operated in GB.

Hereby, Cygnett declares that this FM Transmitter is in compliance with the essential requirements & other relevant provisions of Directive 1999/5/EC. The Declaration of Conformity may be consulted at <http://www.cygnett.com/pages/support.htm>

Serial No:
140108



CE 0678 

Cygnett. 

©2007 Cygnett www.cygnett.com

Free Manuals Download Website

<http://myh66.com>

<http://usermanuals.us>

<http://www.somanuals.com>

<http://www.4manuals.cc>

<http://www.manual-lib.com>

<http://www.404manual.com>

<http://www.luxmanual.com>

<http://aubethermostatmanual.com>

Golf course search by state

<http://golfingnear.com>

Email search by domain

<http://emailbydomain.com>

Auto manuals search

<http://auto.somanuals.com>

TV manuals search

<http://tv.somanuals.com>