

QUICK REFERENCE GUIDE

Cuisinart®

Compact Grill Centro

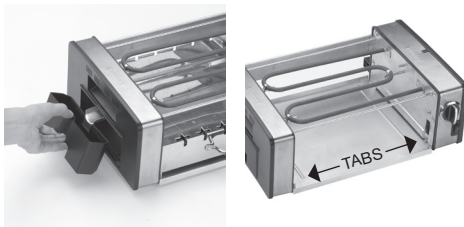


UNIT ASSEMBLY

BEFORE FIRST USE

Thoroughly clean both sides of the reversible grill/griddle plate, as well as the drip cup, kebab drawers, skewers and hot dog rollers by washing either by hand or in the dishwasher.

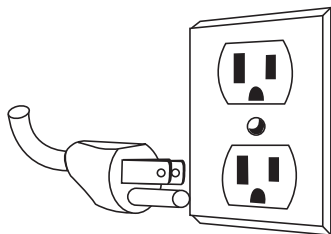
1. Slide the drip cup into the base and push until the tab is locked. Insert the kebab drawer by sliding the top rim of the drawer's back wall over the small round tabs on either side of the opening. Be sure the front of the drawer is secured behind the round tabs.



2. Choose which side you want to cook on, and place the grill/griddle plate on the base with that side facing up. Locate the drip hole on the end of the grill/griddle plate and be sure to align it with the drip cup spout.



3. Plug into standard electrical outlet and begin cooking.



QUICK REFERENCE GUIDE

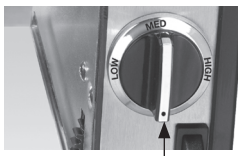
OPERATING INSTRUCTIONS

1. Turn the temperature control dial to the desired setting. The indicator light on the unit will illuminate, signaling the unit is operational. It may take 10–12 minutes to reach operating temperature. Unit may smoke a bit and have a slight odor. This is normal for appliances with nonstick coating.

Note: Temperature control dial can be reset at any time during the cooking process. Unit becomes very hot when cooking, so always use a pot holder. Be sure to let unit cool down for at least 30 minutes before touching it.



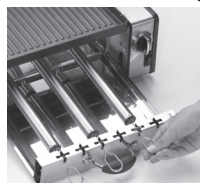
2. When finished, turn temperature control dial to the Off setting, and unplug your unit. Gently pull out the drip tray by pressing down on the tab, and dispose of contents.



USING KEBAB FEATURE

- 1a. Follow assembly instructions to ensure the unit is put together properly. Pull drawer open and place skewers into the skewer slots so that the star-like shape at the end of each handle is inserted into a gear slot at the front end of the kebab drawer. Close drawer securely.

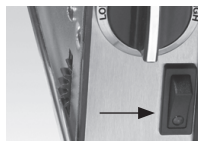
Note: If using large cubes of meat or seafood, you may be limited to the number of kebabs you can cook at once.



- 1b. Assemble hot dog rollers by slipping kebab skewers through the holes in each end of the hot dog roller caps and follow step 1a above. Be sure to place each hot dog in between two of the hot dog rollers.



2. Press the kebab control switch to On. The switch light will illuminate to let you know the kebabs are rotating.



IMPORTANT

Do not throw these instructions away. Read before operating your new Compact Grill Centro. Keep for future reference.

These helpful hints are intended to be a supplement to the Instruction Booklet. In order to ensure safe operation and optimum performance, please read the entire Instruction Booklet.

Please see reverse side for information regarding assembly.

Download from www.Solmanuals.com. All Manuals Search And Download.

Free Manuals Download Website

<http://myh66.com>

<http://usermanuals.us>

<http://www.somanuals.com>

<http://www.4manuals.cc>

<http://www.manual-lib.com>

<http://www.404manual.com>

<http://www.luxmanual.com>

<http://aubethermostatmanual.com>

Golf course search by state

<http://golfingnear.com>

Email search by domain

<http://emailbydomain.com>

Auto manuals search

<http://auto.somanuals.com>

TV manuals search

<http://tv.somanuals.com>