

Cuisinart® INSTRUCTION BOOKLET

Recipe
Booklet
Reverse Side



Blend and Cook Soupmaker

SBC-1000

For your safety and continued enjoyment of this product, always read the instruction book carefully before using.
Download from www.Somanuals.com. All Manuals Search And Download.

IMPORTANT SAFEGUARDS

When using an electrical appliance, basic safety precautions should always be followed, including the following:

1. **READ ALL INSTRUCTIONS BEFORE USING.**
2. To protect against the risk of electrical shock, do not put motor base of blender in water or other liquids.
3. Close supervision is necessary when any appliance is used by or near children.
4. Unplug from outlet when not in use, before putting on or taking off parts, and before cleaning or removing contents from blender jar. **Never put hands into the blender jar or handle the blades with appliance plugged in.**
5. Avoid contact with moving parts.
6. Do not operate any appliance with a damaged cord or plug, or after the appliance malfunctions or is dropped or damaged in any manner. Return appliance to nearest Cuisinart service facility for examination, repair, and/or mechanical or electrical adjustment.
7. The use of attachments, including canning or ordinary jars, not recommended or sold by Cuisinart may cause fire, electrical shock, or risk of injury to persons.
8. Do not use outdoors.
9. Do not let cord hang over edge of counter or table or touch hot surfaces.
10. **Keep hands and utensils out of jar while blending, to reduce the risk of severe injury to persons or damage to blender itself.** A plastic or wooden spatula may be used but must be used only when the blender is turned off.
11. When blender is plugged in and ON/OFF button is flashing, do not touch cutting assembly, interfere with blade movement, or remove blender jar cover. Accidentally touching a speed button may activate the blender.
12. **BLADES ARE SHARP. HANDLE CAREFULLY.**
13. To reduce the risk of injury, never place cutting assembly on base unless the blender jar is properly attached.
14. Always operate blender with the lid in place.
15. Never leave your blender unattended while it is running.
16. Twist locking ring on firmly. Injury can result if moving blades accidentally become exposed.
17. **Regarding your cord set:** A longer cord has been provided so that you will have flexibility in positioning your blender. Exercise care when using the longer cord to avoid entangling or tripping over the cord. The longer cord should be arranged so that it will not drape over the counter or tabletop, where it can be pulled on by children or tripped over.
18. Wash the blender jar, jar collar with black assembly, lid and measuring cup before first use.
19. **WARNING: TO REDUCE THE RISK OF ELECTRICAL SHOCK OR FIRE, DO NOT REMOVE THE BASE PANEL. NO USER-SERVICEABLE PARTS ARE INSIDE. REPAIR SHOULD BE DONE ONLY BY AUTHORIZED PERSONNEL.**
20. **WARNING: FLASHING LIGHT INDICATES READY TO OPERATE. DO NOT TOUCH BLADES.**
21. Ensure all packaging materials and any promotional labels or stickers are removed from the Cuisinart® Blend and Cook Soupmaker before first use.
22. Always inspect the appliance before use for noticeable signs of damage. Do not use if damaged or if the appliance has been dropped. In the event of damage, or if the appliance develops a fault, contact Cuisinart Customer Service.
23. **While unit is in use, the surfaces will become extremely hot. Do not touch hot surfaces. Always use handles. Heating plate and complete jar collar assembly become very hot.**
24. For domestic use only.
25. This appliance should be used only for preparation of drinks / food as described within the instructions for use that accompany it. Please retain these instructions for future reference.
26. Always ensure that your hands are dry before removing the plug from the outlet. Never pull the plug out of the outlet by the cord.
27. Do not connect this appliance to an external timer or remote control system.
28. Extreme caution must be used when moving an appliance containing hot oil or other hot liquids.
29. Do not place on or near a hot gas or electric burner or in a heated oven.
30. To disconnect, turn any control to off, then remove plug from wall outlet.
31. Do not use appliance for other than intended use.
32. Do not submerge the jar collar with blade assembly in water or place in dishwasher.
33. When blending hot liquids ensure vents in lid opening are clear and intended pour spouts are closed (lid is secured).

SAVE THESE INSTRUCTIONS FOR HOUSEHOLD USE ONLY

SPECIAL CORD SET INSTRUCTIONS

NOTICE

For your protection, this unit is equipped with a 3-conductor cord set that has a molded 3-prong grounding-type plug, and should be used in combination with a properly connected grounding-type outlet as shown in Figure A.

1. A short power supply cord (or detachable power supply cord) is to be provided to reduce risks resulting from becoming entangled in or tripping over a longer cord.
2. Longer detachable power supply cords or extension cords are available and may be used if care is exercised in their use.
3. If a long detachable power supply cord or extension cord is used:
 - a) The marked electrical rating of the detachable power supply cord or extension cord should be at least as great as the electrical rating of the appliance;
 - b) If the appliance is of the grounded type, the extension cord should be a grounded type 3-wire cord; and
 - c) The longer cord should be arranged so that it will not drape over the counter top or table top where it can be pulled on by children or tripped over.

NOTE: Do not remove the grounding prong.

CAUTION: Before using an adapter, it must be determined that the outlet cover plate screw is properly grounded. If in doubt, consult a licensed electrician. Never use an adapter unless you are sure it is properly grounded.

Note: Use of an adapter is not permitted in Canada.

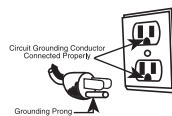


Figure A

UNPACKING INSTRUCTIONS

1. Place the gift box containing your Cuisinart® blender on a flat, sturdy surface before unpacking.
2. Remove instruction booklet and other printed materials from the top of corrugated insert. Next remove the top corrugated insert.
3. Carefully lift blender base from box and set aside.
4. Carefully remove lower corrugated insert containing the blender jar assembly. Be careful not to tip the jar when moving.

To assemble the blender, follow the Assembly Instructions on page 4 in this instruction booklet. Replace all corrugated inserts in the box and save the box for repackaging.

Before using for the first time: Wash all parts according to the Cleaning and Maintenance section on page 6 of this booklet to remove any dust or residue.

TABLE OF CONTENTS

Important Safeguards	1
Unpacking Instructions	2
Features and Benefits	3
Assembly	4
Helpful Reminders	4
Getting to Know Your Control Panel	5
Cooking and Blending	6
Blending Cold Ingredients	6
Cleaning and Maintenance	6
DOs and DON'Ts	7
Warranty Information	8

FEATURES AND BENEFITS

- 1. Press-on Lid**
Tightfitting seal resists leakage and vents in lid opening allow steam to escape.
- 2. Lid Opening**
Allows you to add ingredients when measuring cup is removed from lid.
- 3. Removable Measuring Cup**
Allows you to measure up to 3 ounces of ingredients to add through the lid opening.
- 4. Thermal Shock-Resistant Glass Blending/Cooking Jar**
Has a unique, sturdy, wide-mouth design. Holds 48 oz. of hot liquids and 56 oz. of cold. Hot and cold markings are on the jar.
- 5. Leak-Proof Rubber Gasket (not shown)**
Holds the glass jar snugly in position for safe operation.
- 6. Jar Collar with Heating Plate and Blade Assembly**
- 7. Easy-Clean Non Stick Heating Plate (not shown)** Lets you sauté, simmer, boil and reheat right in blender.
- 8. High-Quality Cutting Assembly with Stainless Steel Blades (not shown)**
Is strong enough for all blending tasks, including tough jobs like crushing ice.
- 9. Electronic Touchpad Controls**
 - a. On/Off Button**
Turns blender on or off.
 - b. Blending Control**
Choose desired speed 1 to 4 or pulse to blend ingredients to the desired consistency. Use speeds 1 through 3 for blending hot ingredients.
 - c. Stir Button**
Gently stirs ingredients as they cook.
 - d. Countdown Timer Control**
Select up to 30 minutes in 1-minute increments. Must be used to operate the temperature controls.
 - e. Temperature Control**
High, Medium and Low settings. Must be used to activate heating.
- 10. Heavy-Duty Motor Base**
- 11. Slip-Proof Feet**
Prevent movement during use and prevent damaging marks on countertops or tables.

- 12. Heavy-Duty Cleaning Brush**
to help clean heating plate and blades thoroughly.
- 13. BPA-Free (not shown)**
All parts that come in contact with food are BPA-free.



Note: Blades are sharp. Handle carefully.
CAUTION: Collar assembly is hot when making soup.
Handle very carefully.

ASSEMBLY

To use your Cuisinart® Blend and Cook Soupmaker, begin by assembling the blender jar.

1. Place jar collar with blade assembly (a) on a flat, sturdy surface.
2. Carefully place the rubber gasket (b) inside the jar collar.
3. Place the blender jar (c) on the collar and turn clockwise until tight.
- Note: Blades are sharp. Handle carefully.**
4. Place lid (d) on jar and push until secure. Place measuring cup (e) in the lid opening and press into lid.
5. When placing jar onto base, be sure arrow on jar collar, located just below the handle, is aligned with arrow on base (Fig. 1). Place jar onto base, making sure the 3 interlocking pins on the underside of the collar (Fig. 2) fit into the rectangular rubber connector on the base (Fig. 3).

NOTE: If jar does not sit flush on base, do not force it! Remove jar and slightly turn the clutch (Fig. 4), located in the center of the top of the base.

CAUTION: Do not adjust jar collar clutch after cooking, as it may be hot.



Fig. 1

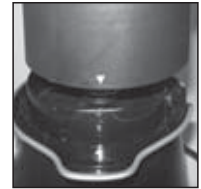


Fig. 2



Fig. 3

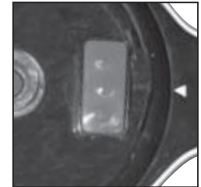


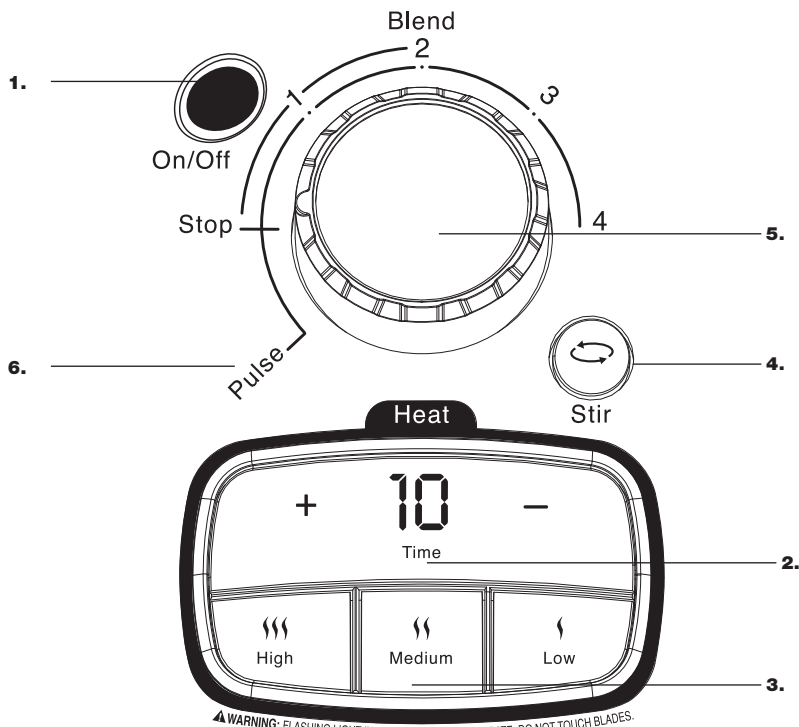
Fig. 4



HELPFUL REMINDERS

- Once the cover is in position, additional ingredients can be added during blending by simply lifting the measuring cup, adding ingredients through lid opening, and replacing the measuring cup.
- **CAUTION:** Be sure lid is on and measuring cup is in lid opening when blending hot liquids.
- Lid should always be in place while the unit is on.
- **CAUTION:** Collar is hot when making soup. Handle carefully.
- Keep hands away from the underside of collar. The surface will also be very hot.
- **CAUTION:** Do not place blender jar on base while motor is running.
- Do not twist blender collar from blender jar when removing blender jar from base. Simply lift blender jar from motor base.
- **CAUTION:** Do not put your hand on top of blender while blending. Hot steam can come through vents.
- Follow Cleaning and Maintenance instructions (page 6), prior to your first use.

GETTING TO KNOW YOUR CONTROL PANEL



1. Power On/Off Button – Press the button to turn on. The red LED light will flash; the unit is now in Standby mode. If the On/Off button is pressed while in Standby mode, the unit will turn off.

2. Cooking Timer Control – **NOTE:** Timer must be set before temperature can be set. When the unit is in Standby mode, the cooking time can be set by pressing the + or – buttons. Time counts up or down

in one-minute increments, up to 30 minutes. (Note: If – button is pressed first, 30 minutes will be displayed.) Hold button down to scroll through minutes, or press and release to advance one minute at a time.

3. Temperature Controls – **NOTE:** Cooking time must be selected before setting temperature. The unit will start its heating or cooking cycle when High, Medium or Low

temperature is selected. The temperature can be changed at any time during the heating or cooking cycle. The heater can be manually turned off by pressing the Temperature control currently in use (this will be illuminated) or pressing the power On/Off button. If the power On/Off button is used to turn off the heater, the unit will power off and must be restarted for blending. **NOTE:** Blending and cooking cannot operate simultaneously.

4. Stir Button – The Stir function does just what it says, allowing you to stir ingredients at a low speed. It can be operated at any time during the cooking or blending cycle. It can also be operated in Standby mode when ingredients are being added to the glass jar. It is a manually operated function; it will stir only when pressed, giving you complete control.

5. Blending Control – The Blending control has 4 speeds – 1 is the lowest setting, 4 is the highest. When in Standby mode, the Blending function is active and operable. **NOTE:** Blending and cooking cannot operate simultaneously. When blending hot items such as soups or sauces, only use speeds 1 through 3; cooking will be non-operational.

6. Pulse – The Pulse setting can only be used in Standby mode. This function creates a burst of power for quick blending. Rotate counter-clockwise, release Blending control and repeat as desired. You determine the duration of each pulse. The Pulse function is best for breaking apart larger pieces of food. **NOTE:** Pulsing and cooking cannot operate simultaneously.

COOKING AND BLENDING

1. Place the motor base of your blender on a flat, sturdy surface. It is important that the surface be clean and dry. Assemble the blender by following the Assembly instructions (page 4). Once the jar is assembled and is in position on the motor base, plug the blender into an electrical outlet.
2. Press the On/Off button. The blender is now in Standby mode.
3. Select the required time per the recipe. This can be adjusted throughout the cooking process, but a time must be selected to start the heater initially.
4. Add ingredients according to the recipe. You may add more ingredients by lifting the measuring cup from the lid and dropping ingredients through the lid opening. When making soup, fill the contents of the glass jar only to the 48-oz. level marked HOT. Always replace the measuring cup after adding ingredients. See Recipe Tips and Hints for cooking soups (recipe book, page 2).

CAUTION: Do not put hands into blender jar with blender plugged in.

NOTE: Do not use anything other than the measuring cup to cover or close lid opening. This prevents obstruction to necessary steam vents.

CAUTION: When blending hot liquids ensure vents in lid opening are clear and intended pour spouts are closed (lid is secured).

5. To remove blender jar lid, lift edge of cover upwards. Lifting from measuring cup will not remove lid.
CAUTION: Be careful of hot steam when removing lid.
6. To stir ingredients while cooking, use the Stir button.
7. When cooking time has finished, the blender will beep 4 times.
8. To blend soup always start on speed 1, gradually increasing to speed 2 or 3. Use only these recommended speeds when blending hot items. Turn the Blending control dial to stop when the desired consistency is reached.
9. Unplug the blender from the electrical outlet. Never remove the blender jar from the motor base until the blender is off. Do not twist the blender collar from the blender jar when removing jar from motor base.

CAUTION: When removing the jar use caution. The area underneath the collar may be extremely hot.

BLENDING COLD INGREDIENTS

1. Place the motor base of your blender on a flat, sturdy surface. It is important that the surface be clean and dry. Assemble the blender by following

the Assembly instructions (page 4). Once the jar is assembled and is in position on the motor base, plug the blender into an electrical outlet.

2. Press the On/Off button. The blender is now in Standby mode.
3. Add all necessary ingredients to the blender jar and replace the cover. You may add more ingredients by lifting the measuring cup and dropping ingredients through the lid opening. Replace the measuring cup after adding ingredients. Do not put hands into blender jar with blender plugged in.

NOTE: Add liquid ingredients first then follow with solid ingredients. This will provide more consistent blending and prevent unnecessary stress on the motor.

4. To remove blender jar lid, lift the edge of lid upwards. Lifting from measuring cup will not remove lid.
5. Turn the Blending control dial to your desired speed or use the Pulse function. Turn the Blending control dial to Stop when the desired consistency is reached.
6. The Stir function can be used as well for gentle blending.
NOTE: To dislodge food, do not use a spatula until you have turned the blender off, use a plastic or wooden spatula to help remove food lodged around the cutting assembly. Replace the lid and measuring cup and continue blending, if necessary. Make sure the spatula is not inside the blender jar before blending.
7. Unplug the blender from the electrical outlet. Never remove the blender jar from the motor base until the blender is off. Do not twist the blender collar from the blender jar when removing jar from motor base.

CLEANING AND MAINTENANCE

NOTE: Jar collar with blade assembly is NOT dishwasher safe. Do not submerge in water or other liquids.

CAUTION: Be extremely careful when cleaning around the blades. They are very sharp.

Always unplug your Cuisinart® Blend and Cook Soupmaker from the electrical outlet before cleaning. The blender is made of corrosion-resistant parts that are easy to clean. Before first use and after every use, clean each part thoroughly. Periodically check all parts before reassembly. If any part is damaged or blender jar is chipped or cracked, DO NOT USE BLENDER.

Remove the blender jar from the motor base by lifting straight up and away. Twist off the jar collar with blade assembly by turning counterclockwise. Carefully remove the rubber gasket.

CAUTION: When removing the jar use caution. The area underneath the collar may be extremely hot.

Place the blender jar, lid, rubber gasket and measuring cup in the upper rack of the dishwasher or wash in warm, soapy water; rinse and dry thoroughly.

To thoroughly clean the heating plate, we recommend that you use the cleaning brush that is included with your blender. Be sure to let the heating plate cool before cleaning with the cleaning brush, as the brush is not heatproof.

NOTE: Do not clean the heating plate with any abrasive tools so as not to scrape the easy-clean coating.

TIP: To wash jar assembly, add a drop of dishwashing liquid and 8 ounces of warm water. Run on speed 1 for 30 to 60 seconds. Repeat, using clean tap water. Do not use heat controls when cleaning. Empty blender jar and carefully disassemble jar from the collar with blade assembly. Rinse and dry all parts thoroughly or allow to air dry.

CAUTION: Handle the cutting assembly carefully. It is SHARP and may cause injury. Do not attempt to remove blades from cutting assembly.

Finally, wipe the motor base clean with a damp cloth to remove any residue, and dry thoroughly. Never submerge the motor base in water or other liquids, or place in a dishwasher. Any other servicing should be performed by an authorized service representative.

DOs and DON'Ts WHEN USING YOUR BLEND AND COOK SOUPMAKER

DO:

- Make sure the electrical outlet is rated at the same voltage as that stated on the bottom of the blender motor base.
- Always use the blender on a clean, sturdy and dry surface.
- When blending always add liquid ingredients to the blender jar first, then add remaining ingredients. This will ensure that ingredients are uniformly mixed.
- Cut most foods into cubes of approximately ½ inch (1.3 cm) to 1 inch (2.5 cm) to achieve a more uniform result.
- Use the removable measuring cup to measure up to 3 ounces of liquid ingredients. Replace measuring cup after ingredients have been added.

- Use a plastic or wooden spatula as needed, only when the blender is turned off. Never use metal utensils, as damage may occur to the blender jar, heating plate or cutting assembly.
- Place lid on firmly. Always operate the blender with the lid on.
- Make sure jar collar with blade assembly is tightly attached to blender jar.
- Always remove collar with blade assembly and rubber gasket before cleaning. Make sure unit has cooled.
- For best results when blending, scrape down sides of the blender jar occasionally.
- Pulses should be short bursts. Space the pulses so the blades stop rotating between pulses.
- During the sautéing process, stir frequently to ensure even cooking.

DON'T:

- Don't store food or liquids in your blender jar.
- Don't place jar collar with blade assembly on motor base without the blender jar attached.
- Don't attempt to mash potatoes, knead heavy dough, or beat egg whites.
- Don't remove blender jar while unit is on. Keep the blender jar cover on the blender jar while blending.
- Don't twist jar collar with blade assembly from blender jar when removing blender jar from motor base. Simply lift blender jar from motor base.
- Don't overprocess foods. Blender will achieve most desired results in seconds, not minutes.
- Don't overload blender. If the motor stalls, turn the blender off immediately, unplug the unit and remove a portion of the food, then continue.
- Don't use any utensil inside the blender jar while the motor is on.
- Don't use any container or accessories not recommended by Cuisinart. Doing so may result in injury.
- Don't put hands inside the blender jar when blender is plugged in.
- Don't run blender when jar is empty.
- Don't leave unattended with the heater on.
- Don't fill jar past the HOT marking (48 oz.) when cooking in the blender.
- Don't touch under the collar assembly during or immediately after heating or cooking foods. It will be very hot!

WARRANTY

LIMITED THREE-YEAR

WARRANTY

This warranty is available to consumers only. You are a consumer if you own a Cuisinart® Blend and Cook Soupmaker that was purchased at retail for personal, family, or household use. Except as otherwise required under applicable state law, this warranty is not available to retailers or other commercial purchasers or owners. We warrant that your Cuisinart® Blend and Cook Soupmaker will be free of defects in material or workmanship under normal home use for three years from the date of original purchase.

We recommend that you visit our website, www.cuisinart.com for a fast, efficient way to complete your product registration. However, product registration does not eliminate the need for the consumer to maintain the original proof of purchase in order to obtain the warranty benefits. In the event that you do not have proof of purchase date, the purchase date for purposes of this warranty will be the date of manufacture.

If your blender should prove to be defective within the warranty period, we will repair it or, if we think it necessary, replace it. To obtain warranty service, please call our Consumer Service Center toll-free at 1-800-726-0190 or write to: Cuisinart, 7811 North Glen Harbor Blvd., Glendale, AZ 85307.

To facilitate the speed and accuracy of your return, please enclose \$10.00 for shipping and handling of the product. Be sure to include a return address, daytime phone number, description of the product defect, product serial number (stamped on bottom of product base), and any other information pertinent to the product's return. Please pay by check or money order. (California residents need only supply proof of purchase and should call 1-800-726-0190 for shipping instructions).

NOTE: For added protection and secure handling of any Cuisinart product that is being returned, we recommend you use a traceable, insured delivery service. Cuisinart cannot be held responsible for in-transit damage or for packages that are not delivered to us. Lost and/or damaged products are not covered under warranty.

Your Cuisinart® Blend and Cook Soupmaker has been manufactured to strict specifications and has been designed for use with the Cuisinart® Blend and Cook Soupmaker accessories and replacement parts. These warranties expressly exclude any defects or damages caused by

accessories, replacement parts, or repair service other than those that have been authorized by Cuisinart. These warranties do not cover any damage caused by accident, misuse, shipment, or other than ordinary household use. These warranties exclude all incidental or consequential damages. Some states do not allow the exclusion of or limitation of incidental or consequential damages, so the foregoing limitation may not apply to you.

CALIFORNIA RESIDENTS ONLY

California law provides that for In-Warranty Service, California residents have the option of returning a nonconforming product (A) to the store where it was purchased or (B) to another retail store that sells Cuisinart products of the same type. The retail store shall then, according to its preferences, either repair the product, refer the consumer to an independent repair facility, replace the product, or refund the purchase price less the amount directly attributable to the consumer's prior usage of the product. If either of the above two options does not result in the appropriate relief to the consumer, the consumer may then take the product to an independent repair facility if service or repair can be economically accomplished.

Cuisinart and not the consumer will be responsible for the reasonable cost of such service, repair, replacement, or refund for nonconforming products under warranty.

California residents may also, at their preference, return nonconforming products directly to Cuisinart for repair or, if necessary, replacement by calling our Consumer Service Center toll-free at 1-800-726-0190. Cuisinart will be responsible for the cost of the repair, replacement, and shipping and handling for such nonconforming products under warranty.

BEFORE RETURNING YOUR CUISINART PRODUCT

If you are experiencing problems with your Cuisinart product, we suggest that you call our Consumer Service Center at 1-800-726-0190 before returning the product for servicing. Often, our Consumer Service Representatives can help solve the problem without having the product serviced. If servicing is needed, a Representative can confirm whether the product is under warranty and direct you to the nearest service location.

Important: If the nonconforming product is to be serviced by someone other than Cuisinart's Authorized Service Center, please remind the servicer to call our Consumer Service Center at 1-800-726-0190 to ensure that the problem is properly diagnosed, the product is serviced with the correct parts, and to ensure that the product is still under warranty.

©2011 Cuisinart
150 Milford Road
East Windsor, NJ 08520
Printed in China

11CE113411

E IB-10066B

Any other trademarks or service marks referred to herein are the trademarks or service marks of their respective owners.

Free Manuals Download Website

<http://myh66.com>

<http://usermanuals.us>

<http://www.somanuals.com>

<http://www.4manuals.cc>

<http://www.manual-lib.com>

<http://www.404manual.com>

<http://www.luxmanual.com>

<http://aubethermostatmanual.com>

Golf course search by state

<http://golfingnear.com>

Email search by domain

<http://emailbydomain.com>

Auto manuals search

<http://auto.somanuals.com>

TV manuals search

<http://tv.somanuals.com>