

# CML SQUARE

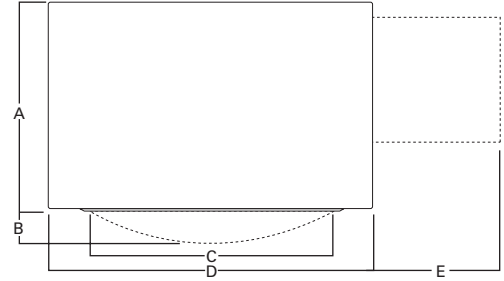
ARCHITECTURAL AREA LUMINAIRE

250-1000W  
MH/HPS



STREETWORKS™

IP55 RATED



Fixture	A	B	C	D	E
CML (in.)	14	3 1/2	19 1/4	22	6 or 14
(mm)	356	89	489	559	152 or 356



NOTE: In all flat glass configurations only.

**HOUSING**

Formed aluminum housing has interior-welded seams for structural integrity and is finished in premium TGIC polyester powder coat paint. U.L. listed and CSA certified for wet locations. IP55 rated.

**BALLAST TRAY**

Ballast tray is securely mounted and inter-locked to housing interior for cooler operation. Tray features toolless removal capability for ease of maintenance and replacement.

**BALLAST**

Long-life core and coil ballast.

**REFLECTOR**

Standard rotatable and interchangeable optics allow for an easy field retrofit with respective sag and flat glass doors for areas with restrictive lighting ordinances such as "Dark Sky".

**DOOR**

Formed aluminum door has heavy-duty hinges, captive retaining screws and is finished in premium TGIC polyester powder coat paint.

**LENS**

Convex tempered glass lens or flat glass.

**GASKET**

Standard one-piece extruded EPDM gasket ensures a bug proof installation and is backed by IP55 rating.

**ORDERING INFORMATION**

SAMPLE NUMBER: CML40MN3VSGBK L

<b>PRODUCT FAMILY</b> <sup>1</sup> CML=CML Square	<b>LAMP WATTAGE</b> <sup>2</sup> 25=250W 40=400W 75=750W <sup>3</sup> 91=1000W <sup>4</sup>	<b>LAMP TYPE</b> M=Metal Halide S=High Pressure Sodium	<b>VOLTAGE</b> <sup>5</sup> 2=120V 0=208V 4=240V 7=277V 8=480V 9=347V W=Multi-Tap wired 120V N=Multi-Tap wired 277V V=Multi-Tap wired 240V	<b>DISTRIBUTION</b> 1F=Type I MCO (Horizontal) 2F=Type II MCO (Horizontal) 2S=Type II Segmented (Horizontal) <sup>6</sup> 3F=Type III MCO (Horizontal) 3S=Type III Segmented (Horizontal) <sup>6</sup> 4S=Type IV Segmented (Horizontal) <sup>6</sup> 5S=Type V Segmented (Horizontal) <sup>6</sup> FT=Forward Throw (Horizontal) AR=Area Round (Vertical) AS=Area Square (Vertical) 3V=Type III (Vertical) RW=Rectangular Wide (Vertical) <sup>7</sup> SL=Spill Light Eliminator (Horizontal) <sup>8</sup>	<b>LENS TYPE</b> FG=Flat Glass SG=Sag Glass	<b>COLORS</b> (add as suffix/ must specify) <sup>9</sup> WH=White BK=Black AP=Grey BZ=Bronze DP=Dark Platinum GM=Graphite Metallic	<b>OPTIONS + ACCESSORIES</b> (See Below)
---	---	--	---	--	---	--	---

**OPTIONS + ACCESSORIES** [Must be listed in the order shown and separated by a dash]

<b>OPTIONS</b> (add as suffix) 1=Single Fuse (120, 277, or 347V) 2=Double Fuse(208, 240, or 480V) EM=Quartz Restrike with Delay (Also Strikes at Cold Start) 4=NEMA Twistlock Photocontrol Receptacle Q=Quartz Restrike (Hot Restrike Only) HS=House Side Shield <sup>10</sup> EHS=External House Side Shield AIR=Arm Included for Round Pole <sup>11</sup> AIS=Arm Included for Square Pole <sup>11</sup> VS=Vandal Shield (Arm Mount Only, 400W Maximum) L=Lamp Included	<b>ACCESSORIES</b> (order separately. add color as suffix) MA1004-XX=14" Arm for Square Pole <sup>12</sup> MA1005-XX=6" Arm for Square Pole MA1006-XX=Direct Mount Kit for Square Pole MA1007-XX=14" Arm for Round Pole <sup>12</sup> MA1008-XX=6" Arm for Round Pole MA1009-XX=Direct Mount Kit for Round Pole MA1010-XX=Single-arm Tenon Adapter for 3 1/2" O.D. Tenon MA1011-XX=2 @ 180° Tenon Adapter for 3 1/2" O.D. Tenon MA1012-XX=3 @ 120° Tenon Adapter for 3 1/2" O.D. Tenon MA1013-XX=4 @ 90° Tenon Adapter for 3 1/2" O.D. Tenon MA1014-XX=2 @ 90° Tenon Adapter for 3 1/2" O.D. Tenon MA1015-XX=2 @ 120° Tenon Adapter for 3 1/2" O.D. Tenon MA1016-XX=3 @ 90° Tenon Adapter for 3 1/2" O.D. Tenon	<b>MA1017-XX</b> =Single-arm Tenon Adapter for 2 3/8" O.D. Tenon <b>MA1018-XX</b> =2 @ 180° Tenon Adapter for 2 3/8" O.D. Tenon <b>MA1019-XX</b> =3 @ 120° Tenon Adapter for 2 3/8" O.D. Tenon <b>MA1029-XX</b> =Wall Mount Bracket with 10" Arm (Specify color) <b>MA1045-XX</b> =4 @ 90° Tenon Adapter for 2 3/8" O.D. Tenon <b>MA1048-XX</b> =2 @ 90° Tenon Adapter for 2 3/8" O.D. Tenon <b>MA1049-XX</b> =3 @ 90° Tenon Adapter for 2 3/8" O.D. Tenon EHS-XX=External House Side Shield OA1016=Photocontrol-Multi-Tap OA1027=Photocontrol-480V OA1201=Photoelectric Control, 347V NEMA Type
---	--	--

**OPTIONAL COLORS** [Other finish colors available. Consult your Cooper Lighting representative]

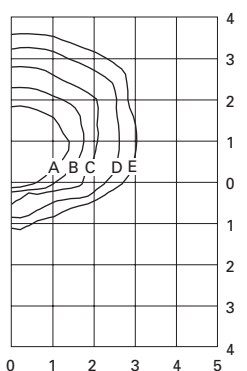
<b>WH</b> White	<b>BK</b> Black	<b>AP</b> Grey	<b>BZ</b> Bronze	<b>DP</b> Dark Platinum	<b>GM</b> Graphite Metallic

**SHIPPING DATA**

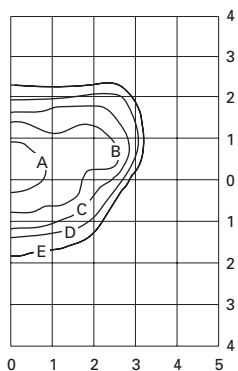
Approximate Net Weight:  
79 lbs. (36 kgs.)

NOTES: 1 Arm not included. See options and accessories. 2 Mogul-base lamp socket. 3 750W Pulse Start for vertical mount only. 4 Requires reduced envelope BT-37 lamp on Metal Halide or ED-37 on HPS. 5 Standard with CWA ballast. 6 Maximum wattage on segmented optical distributions is 400W. 400W Metal Halide lamp must use reduced envelope ED-28 lamp. 7 RW optic not available with flat glass. 8 Must use reduced envelope lamp. Not available in 1000W HPS. 9 Other finish colors available, including a full line of RAL color matches. Consult your Cooper Lighting Representative. 10 House side shields available on 2F, 3F, FT, 2S, 3S, 4S distributions only, and all vertically lamped optics when specified with sag lens. 11 Provided with 1 1/2" arm. 12 Required when mounting fixtures at 90° increments (Arm EPA 0.62).

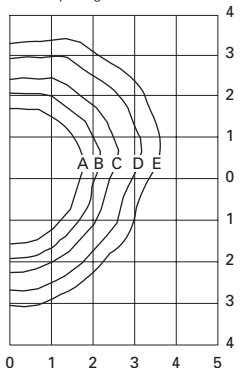
PHOTOMETRICS [Complete IES files available at www.cooperlighting.com]



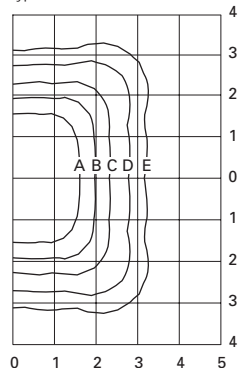
**CML40MSLF.IES**  
400-Watt MH  
36,000-Lumen Clear Lamp  
SLE—Spill Light Eliminator Flat Glass



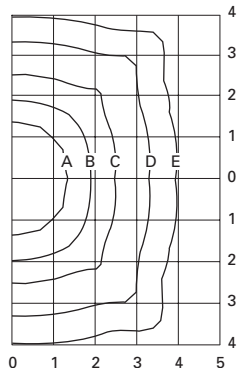
**CML40S3FF.IES**  
400-Watt HPS  
50,000-Lumen Clear Lamp  
Type III Flat Glass



**CML91M3VF.IES**  
1000-Watt MH  
110,000-Lumen Clear Lamp  
Type III Vertical Flat Glass



**CML91MASF.IES**  
1000-Watt MH  
110,000-Lumen Clear Lamp  
Area Square Flat Glass



**CML91MASS.IES**  
1000-Watt MH  
110,000-Lumen Clear Lamp  
Area Square Flat Glass

**FOOTCANDLE TABLE**

Select mounting height and read across for footcandle values of each isofootcandle line. Distance in units of mounting height.

Mounting Height	Footcandle Values for Isofootcandle Lines				
	A	B	C	D	E
<b>CML40MSLF.IES</b>					
30'	2.00	1.00	0.50	0.20	0.10
35'	1.46	0.73	0.37	0.15	0.07
40'	1.12	0.56	0.28	0.11	0.06

**CML40S3FF.IES**

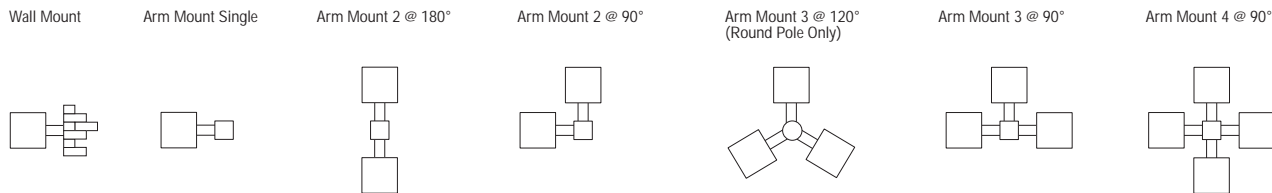
30'	2.00	1.00	0.50	0.25	0.10
35'	1.46	0.73	0.37	0.18	0.07
40'	1.12	0.56	0.28	0.14	0.06

**FOOTCANDLE TABLE**

Select mounting height and read across for footcandle values of each isofootcandle line. Distance in units of mounting height.

Mounting Height	Footcandle Values for Isofootcandle Lines				
	A	B	C	D	E
<b>CML91M3VF.IES / CML91MASF.IES / CML91MASS.IES</b>					
30'	3.50	2.00	1.00	0.50	0.20
35'	2.60	0.73	0.37	0.18	0.07
40'	2.00	1.00	0.50	0.20	0.10

**MOUNTING CONFIGURATIONS**

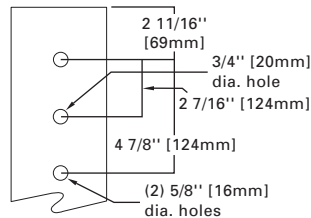


CML	DRILL PATTERN "M"	SINGLE [W/ARM WHERE APPLICABLE]					
		2 @ 180°	2 @ 90°	3 @ 90°	3 @ 120°	4 @ 90°	
		3.1	6.2	7.2	9.8	9.8	11.1

NOTE: 1 Assumes 14" arm for 90° and 120° mounting configurations, 6" for all else.

**DRILLING PATTERN**

TYPE "M"



**DARK SKY COMPLIANT [FULL CUTOFF PERFORMANCE]**

SLE "SPILL LIGHT ELIMINATOR"



## Free Manuals Download Website

<http://myh66.com>

<http://usermanuals.us>

<http://www.somanuals.com>

<http://www.4manuals.cc>

<http://www.manual-lib.com>

<http://www.404manual.com>

<http://www.luxmanual.com>

<http://aubethermostatmanual.com>

Golf course search by state

<http://golfingnear.com>

Email search by domain

<http://emailbydomain.com>

Auto manuals search

<http://auto.somanuals.com>

TV manuals search

<http://tv.somanuals.com>