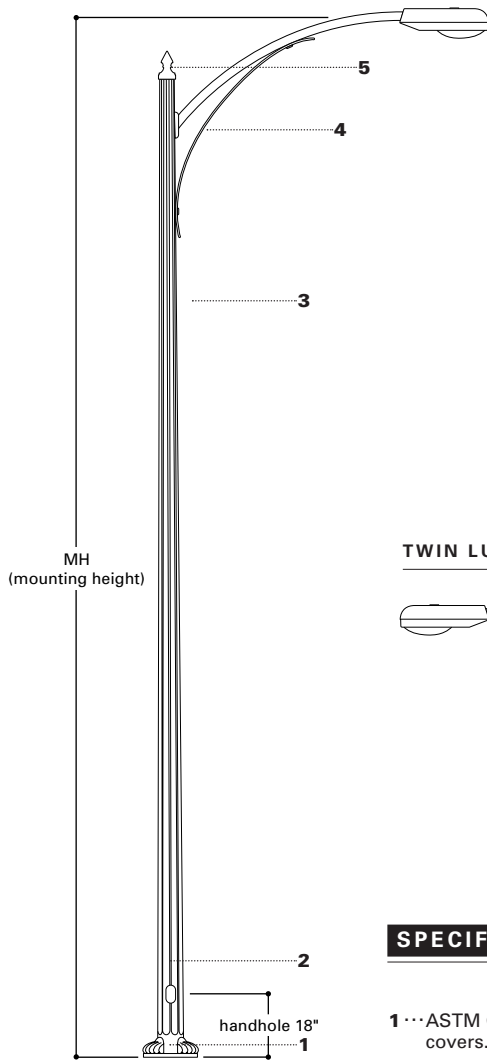


DETAILS

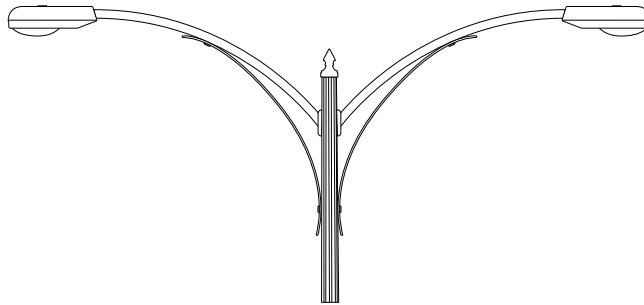
**FTS
FLUTED
TAPERED
STEEL**

2 1' - 4 1'
Mounting Height

FLUTED TAPERED STEEL



TWIN LUMINAIRE ARMS AVAILABLE



SPECIFICATION FEATURES

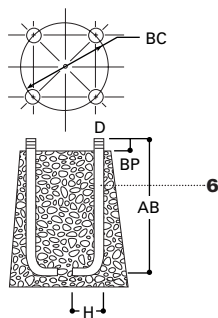
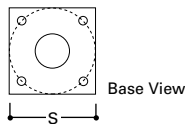
- 1...ASTM Grade steel base plate. Pole provided with decorative cast aluminum nut covers.
- 2...Hand hole assembly 4" x 6".
- 3...ASTM 595 steel fluted shaft. Pole cross section is an 8 Sharp Flute.
- 4...Luminaire arm is 2.375" tubing available in 4', 6', and 8' lengths. Decorative scroll is attached to the underside and to the pole with hex head bolts.
- 5...Decorative cast aluminum pole cap attached using three (3) set screws.
- 6...Anchor bolt per ASTM A576 with (2) nuts, (2) flat washer, and (1) lock washer. Nuts, washers and threaded portion of bolt are hot dip galvanized 3" hook for 3/4" bolt. 4" hook for 1" bolt.

FOUR BOLT ANCHORAGE (see ordering information)

- BC=Bolt Circle
- BP=Bolt Projection
- AB=Bolt Dimensions
- D=Bolt Diameter
- H=Bolt Dimensions

FINISH COLORS

- F=Dark Bronze
- S=Silver
- V=Grey
- W=White
- Y=Black



ORDERING INFORMATION

The following information illustrates the correct way to enter an order for **FTS6A21SFP14**. The ordering designation is detailed as follows.

Fluted F	Tapered T	Steel S	Shaft ³ Size 6.5	Mounting Height (ft.) 21	Base Type F	Finish ³ P	Fixture Mounting & Type 1	No. & Location of Arms 1	Arm Lengths 4
--------------------	---------------------	-------------------	--	--	--------------------------	---------------------------------	---	--	----------------------------

Mtg. Height	Catalog Number	Base Square (In.)	Bolt Circle Dia. (In.)	Bolt Proj. (In.)	Shaft Size (In.)	Anchor Bolt Dia. & Length (In.)	Arm Length (Ft.)	Net. Wt. (Lbs.)	EPA Rating Per Arm EPA At Pole Top (Sq. Ft.)				Max. Fixture Load—Include Bracket (Lbs.)
MH		S	BC	BP	B		AB	70	80	90	100		
21	FTS6A21SFP14	10	9 1/2	3 3/4	6 1/2	1 x 36 x 4	4	180	1.7	1.7	1.7	1.7	60
21	FTS6A21SFP16	10	9 1/2	3 3/4	6 1/2	1 x 36 x 4	6	200	1.7	1.7	1.7	1.7	60
21	FTS6A21SFP18	10	9 1/2	3 3/4	6 1/2	1 x 36 x 4	8	220	1.7	1.7	1.7	1.7	60
21	FTS6A21SFP24	10	9 1/2	3 3/4	6 1/2	1 x 36 x 4	4	220	1.7	1.7	1.7	1.7	120
21	FTS6A21SFP26	10	9 1/2	3 3/4	6 1/2	1 x 36 x 4	6	240	1.7	1.7	1.7	1.7	120
21	FTS6A21SFP28	10	9 1/2	3 3/4	6 1/2	1 x 36 x 4	8	260	1.7	1.7	1.7	1.7	120
31	FTS8A31SFP14	11 1/2	11	4	8	1 x 36 x 4	4	295	1.7	1.7	1.7	1.7	60
31	FTS8A31SFP16	11 1/2	11	4	8	1 x 36 x 4	6	315	1.7	1.7	1.7	1.7	60
31	FTS8A31SFP18	11 1/2	11	4	8	1 x 36 x 4	8	335	1.7	1.7	1.7	1.7	60
31	FTS8A31SFP24	11 1/2	11	4	8	1 x 36 x 4	4	335	1.7	1.7	1.7	1.7	120
31	FTS8D31SFP24	11 1/2	11	4	8	1 x 36 x 4	4	335	1.7	1.7	1.7	1.7	120
31	FTS8A31SFP26	11 1/2	11	4	8	1 x 36 x 4	6	355	1.7	1.7	1.7	1.7	120
31	FTS8D31SFP26	11 1/2	11	4	8	1 x 36 x 4	6	355	1.7	1.7	1.7	1.7	120
31	FTS8A31SFP28	11 1/2	11	4	8	1 x 36 x 4	8	375	1.7	1.7	1.7	1.7	120
31	FTS8D31SFP28	11 1/2	11	4	8	1 x 36 x 4	8	375	1.7	1.7	1.7	1.7	120
41	FTS9A41SFP14	13	13	5 1/4	9 1/2	1 1/4 x 42 x 6	4	395	1.7	1.7	1.7	1.7	60
41	FTS9D41SFP14	13	13	5 1/4	9 1/2	1 1/4 x 42 x 6	4	395	1.7	1.7	1.7	1.7	60
41	FTS9A41SFP16	13	13	5 1/4	9 1/2	1 1/4 x 42 x 6	6	415	1.7	1.7	1.7	1.7	60
41	FTS9D41SFP16	13	13	5 1/4	9 1/2	1 1/4 x 42 x 6	6	415	1.7	1.7	1.7	1.7	60
41	FTS9A41SFP18	13	13	5 1/4	9 1/2	1 1/4 x 42 x 6	8	435	1.7	1.7	1.7	1.7	60
41	FTS9D41SFP18	13	13	5 1/4	9 1/2	1 1/4 x 42 x 6	8	435	1.7	1.7	1.7	1.7	60
41	FTS9A41SFP24	13	13	5 1/4	9 1/2	1 1/4 x 42 x 6	4	420	1.7	1.7	1.7	1.7	120
41	FTS9D41SFP24	13	13	5 1/4	9 1/2	1 1/4 x 42 x 6	4	420	1.7	1.7	1.7	1.7	120
41	FTS9A41SFP26	13	13	5 1/4	9 1/2	1 1/4 x 42 x 6	6	440	1.7	1.7	1.7	1.7	120
41	FTS9D41SFP26	13	13	5 1/4	9 1/2	1 1/4 x 42 x 6	6	440	1.7	1.7	1.7	1.7	120
41	FTS9A41SFP28	13	13	5 1/4	9 1/2	1 1/4 x 42 x 6	8	460	1.7	1.7	1.7	1.7	120
41	FTS9D41SFP28	13	13	5 1/4	9 1/2	1 1/4 x 42 x 6	8	460	1.7	1.7	1.7	1.7	120

NOTES: ¹ Catalog number includes pole with anchor bolts with double nuts (BEFORE INSTALLING ANCHOR BOLTS MAKE SURE PROPER ANCHOR BOLT TEMPLATE IS OBTAINED FROM COOPER LIGHTING HEADQUARTERS). ² Shaft size, base plate, anchor bolts and projections may vary slightly—all dimensions nominal. ³ Paint over galvanized steel available. Consult your Cooper Lighting Representative.

NOTE: Specifications and dimensions subject to change without notice.



Free Manuals Download Website

<http://myh66.com>

<http://usermanuals.us>

<http://www.somanuals.com>

<http://www.4manuals.cc>

<http://www.manual-lib.com>

<http://www.404manual.com>

<http://www.luxmanual.com>

<http://aubethermostatmanual.com>

Golf course search by state

<http://golfingnear.com>

Email search by domain

<http://emailbydomain.com>

Auto manuals search

<http://auto.somanuals.com>

TV manuals search

<http://tv.somanuals.com>