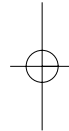


PLEASE READ AND SAVE THIS USE AND CARE BOOK.

Better Water By Design

CLEAR²OTM

Water Filtration Pitcher



Models

- CWS100A
- CWS100B

Accessories/Parts
(USA/Canada)
1-800-738-0245

To order more filters:
Go online
www.clear2o.com

? USA/Canada
1-800-231-9786

TABLE OF CONTENTS

	PAGE
INTRODUCTION	2
GETTING STARTED	4
Installing Filter	4
Before Attaching Connector to Faucet	5
Attaching Connector to Faucet	5
READY FOR FILTERED WATER	6
Replacing the filter	7
CARE AND CLEANING	7
TROUBLESHOOTING	8
PERFORMANCE DATA SHEET	9
TECHNICAL SPECIFICATIONS	12

INTRODUCTION

Congratulations on your purchase of the CLEAR₂O[®] Pitcher Filtration system from Applica—a new easy way to enjoy cleaner, healthier, great-tasting water...right out of your kitchen faucet.

Water is cleaner. High-performance filter removes **5 times more contaminants*** than the leading brand of pitcher filters.

It saves you time. Advanced, quick-connect design fills pitcher **9 times faster**** than the leading brand's comparable pitcher.

Provides maximum convenience. Superior space-efficient design **holds 50% more water***** than the leading brand's comparable model.

State-of-the-art technology. Intelligent-filter-indicator lets you know exactly when it's time to change the filter.

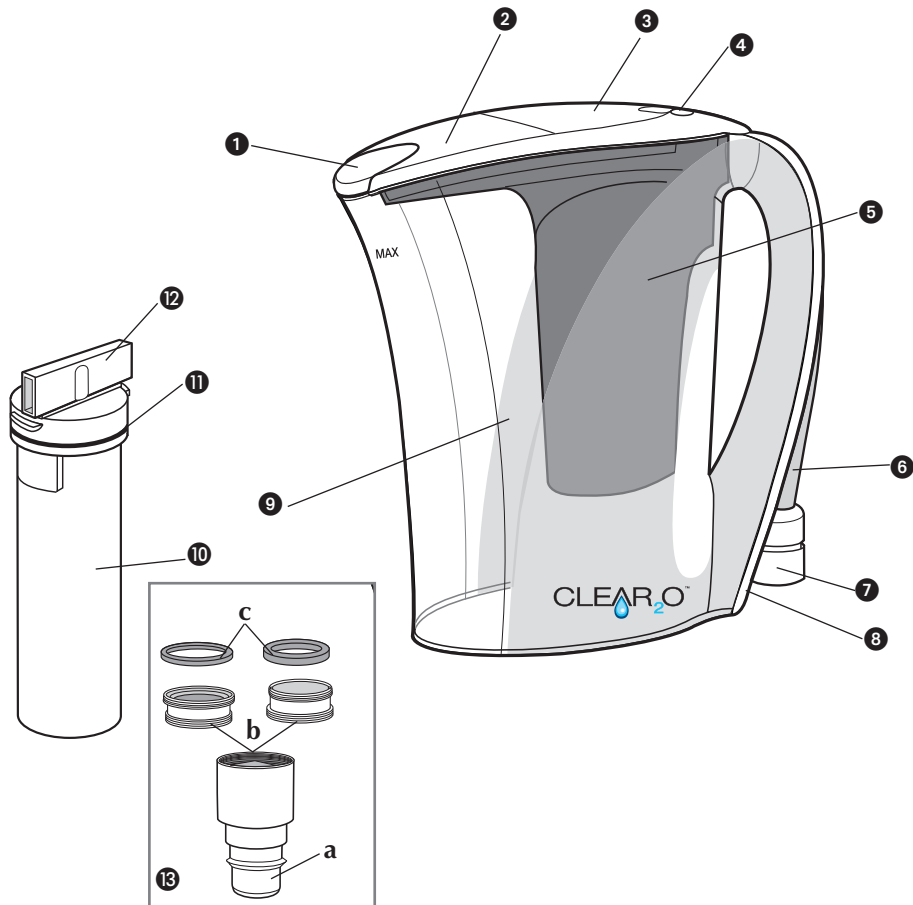
The more you use the CLEAR₂O[®] Filtration Pitcher system, the more you'll find it's designed to give you better water.

*Based on contaminants listed by NSF for CLEAR₂O[®] Pitcher Filter CWF100 vs. Leading Pitcher Filter model #OB03.

**vs. time for comparable leading pour through pitcher (model #OB32) to fill to stated capacity.

***vs. leading pitcher's stated capacity (CLEAR₂O[®] pitcher stated capacity 9, 8-oz. glasses. Leading pitcher comparable model #OB32 stated capacity 6, 8-oz. glasses).

Product may vary slightly from what is illustrated.



1. Spout cover
2. Pitcher lid
3. Filter lid
4. Intelligent-filter indicator
5. Filter reservoir
6. Quick-connect hose
7. Faucet connector
8. Storage compartment
9. Pitcher (72 oz.)

†10. Filter (Part # CWF100)

11. O-ring seal

12. Bar

†13. Aerator (a) with faucet adapters (b) and 2 rubber washers (c)
(Part # CWS100-02)

† Consumer replaceable/removable parts

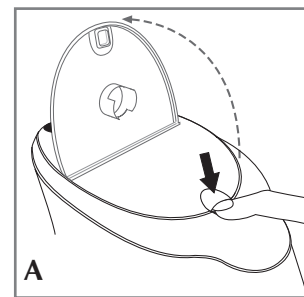
GETTING STARTED

1. Hand-wash pitcher, lid and filter reservoir with a mild detergent and water. Do not use abrasive cleaners.
2. Rinse well.

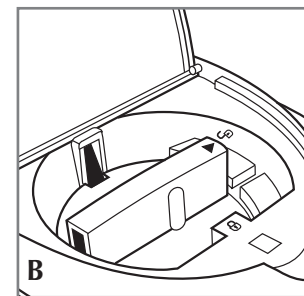
Tip: Hand-wash pitcher, lid and filter reservoir periodically. Do not wash in the dishwasher. For best results cleaning CLEAR2O pitcher lid, dilute a teaspoon of vinegar in a cup of water. Soak a soft sponge in vinegar solution and wipe clean.

Installing the Filter

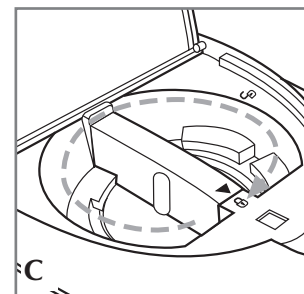
1. Wash your hands with soap and water then remove filter from packing film. Remove clear protective wrap from the filter.



2. Using your index finger, lift the filter lid to open (A).



3. Insert the filter into the filter reservoir by lining (up arrow) ▲ on the filter bar with ⊔ (unlock symbol) on the lid (B).



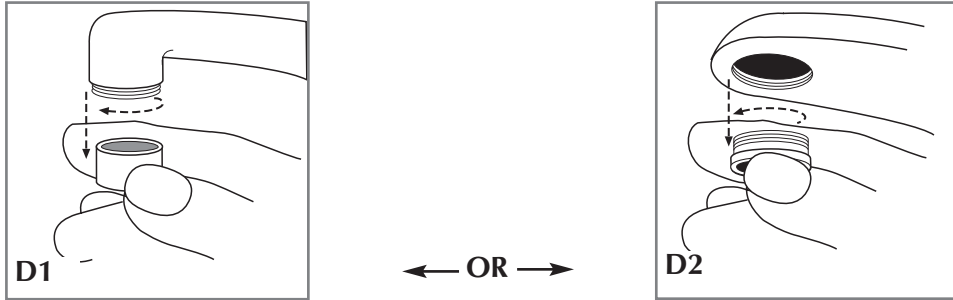
4. Turn the bar clockwise to the ⊓ (locked symbol) position. Be sure filter is locked in place (C).

Tip: The bar must be fully aligned with the ⊓ (locked position) for the filter lid to close.

5. Close the filter lid.

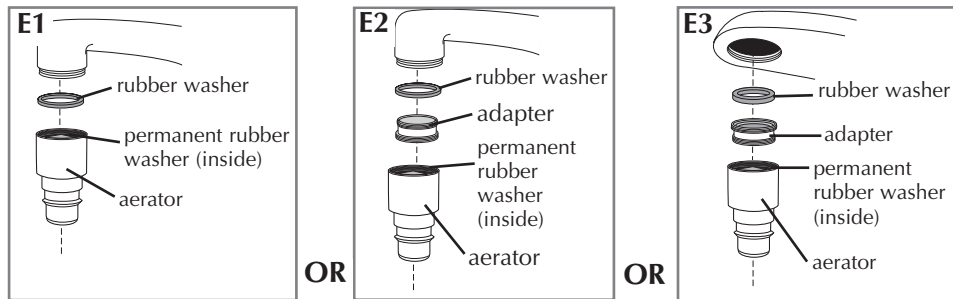
Before Attaching Connector to Faucet (D1, D2)

1. If your faucet has an aerator, remove aerator as shown in figure D1 or D2. The aerator has a rubber washer that might get stuck to the metal faucet. Make sure you remove it.



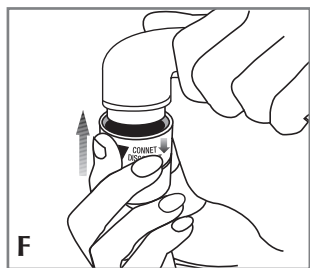
2. If you need to adjust your faucet to fit the connector, use the aerator and one of the faucet adapters provided as shown (E1, E2, E3) until you find the combination that fits your faucet.

Note: The aerator provided has a permanent rubber washer inside. DO NOT REMOVE IT. Use one of the rubber washers provided.



Ready to Attach Connector to Faucet:

1. Pull the faucet connector and quick-connect hose out of storage compartment.
2. Grip connector with one hand and with free hand, push down outer ring.
3. Keeping outer ring in the down position, place connector under the faucet and push it up onto the faucet to fit securely in place (F).



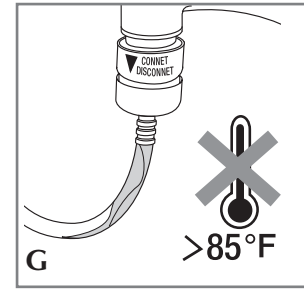
Important: To avoid damage to the faucet connector, you must push down the outer ring before pushing up the connector onto the faucet.

READY FOR FILTERED WATER

1. Turn faucet to cold water.

Important:

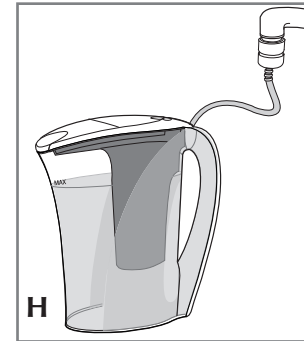
- You must use municipally treated/private well, potable water.



- NEVER use hot water (above 85°F).

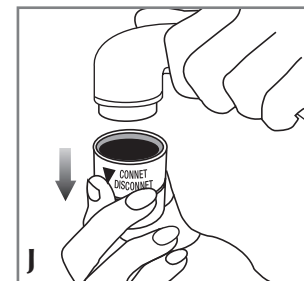
2. Open the faucet enough so that water flows through the hose (G).

Important: To avoid overflow, do not use too much water pressure.



3. Fill the pitcher to the MAX line (H). Do not overfill.

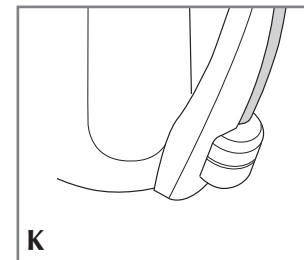
4. Discard the first 3 pitchers of filtered water to flush the system and purge the air.



5. Once the pitcher is filled with desired amount of water, again push down outer ring and then pull down connector to disconnect from the faucet (J).

Important: To avoid damage to the connector, you must push down the outer ring before pulling down connector.

6. Wipe the connector surface to dry.



7. When finished, insert quick-connect hose and connector in storage compartment (K).

8. Keep new faucet adapter attached in place.

Care and Cleaning

REPLACING THE FILTER

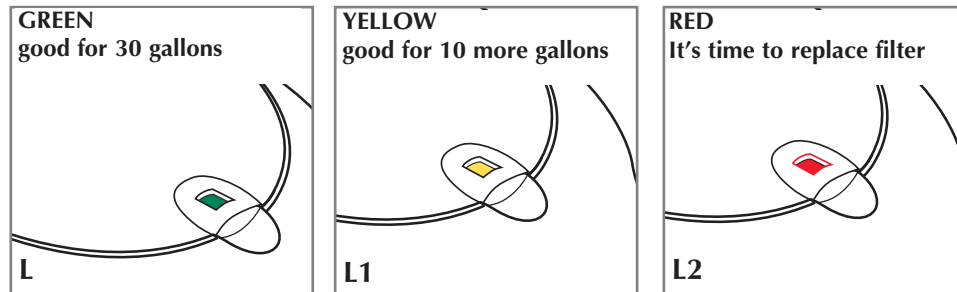
Filters are available at various retailers or by visiting our website at clear2o.com.


For best results, the filter should be replaced after 40 gallons of consumed water. Unlike some other product filters that estimate filter life base on time, the intelligent-filter indicator in your CLEAR₂O™ system measures the amount of water you use, resulting in a better value for your money--you will not replace the filter unless you really have exceeded the recommended filter capacity; therefore, it will last much longer.

Intelligent-Filter Indicator

Your unit has an Intelligent-Filter Indicator built into the filter cover that automatically activates the flow meter indicator and resets it every time you install a new filter. This makes it easy to know exactly when to replace the filter (L).

- As soon as you install the filter, the indicator turns green for 30 gallons of water consumption then it changes to yellow for 10 more gallons of water.
- Once indicator turns red, it is time to replace the filter.



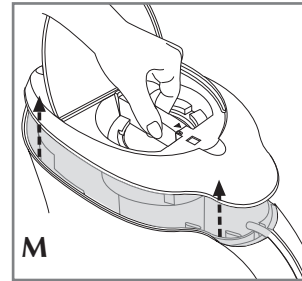
1. To remove the filter:
 - a. Lift the filter lid to open.
 - b. Turn the bar on the filter counterclockwise to the  (unlocked symbol) position.
 - c. Keep turning the bar until filter is released.
 - d. Pull out filter and discard.
2. To install the filter, follow steps 2-5 under "Installing the Filter".

CLEANING

Pitcher

1. To remove the lid assembly:

- a. Using your index finger, lift the filter lid to open.




- b. Grasp the top bar on the filter and pull it straight up to disengage the lid assembly from the pitcher (M).

Important: Be sure the filter is locked in place.

2. Empty pitcher and hand-wash with mild detergent and water. Do not wash in the dishwasher.

Lid and Filter Reservoir. Wipe lid and outside surface of filter reservoir with a damp cloth. Do not wash in the dishwasher.

TROUBLESHOOTING

Filter lid does not close.	Make sure the filter is securely locked in place. Verify the bar on the filter is fully aligned with the  (locked symbol).
Not able to attach connector to the faucet	Follow instructions for Attaching Connector to Faucet.
Water leaks or sprays from connection at faucet	Verify that you placed the washer between the faucet and the adapter.
Cannot remove the filter	Turn filter bar past the unlock position and keep turning until filter is released.

**Performance Data Sheet
for CLEAR2O Models CWS100A and CWS100B
with Replacement Cartridge CWF100
Chemical, Mechanical Reduction Filter**

This system has been tested according to NSF/ANSI Standards 42 and 53 for the reduction of the substances listed below.

The concentration of the indicated substances in water entering the system was reduced to a concentration less than or equal to the permissible limit for water leaving the system as specified in NSF/ANSI 42 and 53.



System tested and certified by NSF International against NSF/ANSI Standard 42 for the reduction of Chlorine Taste and Odor, Particulate Nominal Class I and against NSF/ANSI Standard 53 for the reduction of Lead, Mercury, Asbestos, Cadmium, MTBE, Toxaphene, VOC, Cyst, Turbidity.

Capacity: 40 gallons (151 liters) depending on local water conditions

Substance	Average Influent Concentration	Influent Challenge Concentration	Average Product Water Concentration	Average % Reduction	Max. Permissible Product Water Concentrations as mg/L	Max Effluent	Min. % Reduction	NSF Test
NSF/ANSI Standard 42 – AESTHETIC EFFECTS								
Chlorine taste and odor		2.0 mg/L±10%			≥50%			
Particulate Class I Particle size: 0.5 to < 1.0 um		At least 10,000 particles/ml			≥85%			
NSF/ANSI Standard 53 – HEALTH EFFECTS								
Lead, pH=6.5		0.15 mg/L±10%			0.01			
Lead, pH=8.5		0.15 mg/L±10%			0.01			
Mercury, pH=6.5		0.0006 mg/L+/10%			0.002			
Mercury, pH=8.5		0.0006 mg/L+/10%			0.002			
Asbestos		10 ⁷ to 10 ⁸ fibers/L; fibers greater than 10 um in length			99%			
Cadmium		0.03 mg/L±10%			0.005			
MTBE		0.015 mg/L±20%			0.005			
Toxaphene		0.015+/10%			0.003			
VOC		0.30 mg/L±10%			>95%			
Cysts*		Minimum 50,000/L			99.95%			
Turbidity		11±NTU			0.5 NTU			

* Based on the use of Cryptosporidium parvum oocysts

Application Guidelines/Water Supply Parameters	
Service flow	1 gpm (3.8 lpm)
Water supply	Community or private well
Water pressure	20-100 psig (138-690 kPa)
Water temperature	40°F - 100°F (4°C - 38°C)

Note that while the testing was performed under standard laboratory conditions, actual performance may vary. Systems must be installed and operated in accordance with manufacturer's recommended procedures and guidelines.

Organic Chemicals Included by Surrogate Testing

Chemical	Influent Challenge Level mg/L	Chemical Reduction Percent	Maximum Product Water Level mg/L
alachlor	0.05	>98	0.001
atrazine	0.100	>97	0.003
benzene	0.081	>99	0.001
carbofuran	0.190	>99	0.001
carbon tetrachloride	0.078	98	0.0018
chlorobenzene	0.077	>99	0.001
chloropicrin	0.015	99	0.0002
2,4-D	0.110	98	0.0017
dibromochloropropane (DBCP)	0.052	>99	0.00002
o-dichlorobenzene	0.080	>99	0.001
p-dichlorobenzene	0.040	>98	0.001
1,2-dichloroethane	0.088	95 ¹	0.0048
1,1-dichloroethylene	0.083	>99	0.001
cis-1,2-dichloroethylene	0.170	>99	0.0005
trans-1,2-dichloroethylene	0.086	>99	0.001
1,2-dichloropropane	0.080	>99	0.001
cis-1,3-dichloropropylene	0.079	>99	0.001
dinoseb	0.170	99	0.0002
endrin	0.053	99	0.00059
ethylbenzene	0.088	>99	0.001
ethylene dibromide (EDB)	0.044	>99	0.00002
haloacetonitriles (HAN)			
bromochloroacetonitrile	0.022	98	0.0005
dibromoacetonitrile	0.024	98	0.0006
dichloroacetonitrile	0.0096	98	0.0002
trichloroacetonitrile	0.015	98	0.0003
halo ketones (HK)			
1,1-dichloro-2-propanone	0.0072	99	0.0001
1,1,1-trichloro-2-propanone	0.0082	96	0.0003
heptachlor	0.25 ¹	>99	0.0001 ¹
heptachlor epoxide	0.0107	98	0.0002
hexachlorobutadiene	0.044	>98	0.001

Chemical	Influent Challenge Level mg/L	Chemical Reduction Percent	Maximum Product Water Level mg/L
hexachlorocyclopentadiene	0.060	>99	0.000002
lindane	0.055	>99	0.00001
methoxychlor	0.050	>99	0.0001
pentachlorophenol	0.096	>99	0.001
simazine	0.120	>97	0.004
styrene	0.150	>99	0.0005
1,1,2,2-tetrachloroethane	0.081	>99	0.001
tetrachloroethylene	0.081	>99	0.001
toluene	0.078	>99	0.001
2,4,5-TP (silvex)	0.270	99	0.0016
tribromoacetic acid	0.042	>98	0.001
1,2,4-trichlorobenzene	0.16	>99	0.0005
1,1,1-trichloroethane	0.084	95	0.0046
1,1,2-trichloroethane	0.15	>99	0.0005
trichloroethylene	0.18	>99	0.001
trihalomethanes (includes)			
chloroform (surrogate chem.)			
bromoform	0.3	95	0.015
bromodichloromethane			
chlorodibromomethane			
xylenes (total)	0.07	>99	0.001



Applia Consumer Products, Inc.
 Miramar, FL 33027
 1-800-231-9786
 www.appliaconsumerproductsinc.com

TECHNICAL SPECIFICATIONS

Model No.

Description

CWS100A – Pitcher and Filter Cartridge CWF100
 CWS100B – Platinum Pitcher and Filter Cartridge CWF100

Water Temperature: Max. 85°F – Min. 32°F

Operating Requirements

For cold water use only.

- It is essential that operational, maintenance and filter replacement requirements be carried out for this product to perform as advertised.
- Change filter cartridges after 40 gallon of consumed water.
- Flush new cartridge for 3 full pitcher volumes.
- Do not use with water that is microbiologically unsafe or of unknown quality without adequate disinfection before or after the system.
- Systems certified for cyst reduction may be used on disinfected water that may contain filterable cysts.

For service and parts call:

Fox International,
 1-800-738-0245
 or visit our website at www.clear2o.com



Applia Consumer Products, Inc.
 Miramar, FL 33027
 1-800-231-9736

Need Help?

For service, repair or any questions regarding your water filtration product, call the appropriate "800" number on the cover of this book. Do not return the product to the place of purchase. Do not mail the product back to the manufacturer nor bring it to a service center. You may also want to consult the website listed on the cover of this manual.

This product has a 90-day Limited Warranty which (applies only in the United States and Canada) when strictly used in accordance with instructions to filter municipally treated/private well, potable tap water.

What does it cover?

- Any defect in material or workmanship.

For how long?

- 90 days after the date of original purchase.

What will we do to help you?

- Provide you with a reasonably similar replacement product.

How do you get service?

- Save you receipt as proof of the date of sale.
- Check our on-line service site at www.prodprotect.com/applica, or call our toll-free number, 1-800-231-9786, for general warranty service.
- If you need parts or accessories, please call 1-800-738-0245.

What does your warranty not cover?

- Damage from commercial use.
- Damage from misuse, abuse or neglect.
- Products that have been modified in any way.
- Products used or serviced outside the country of purchase.
- Shipping and handling costs associated with the replacement of the unit.
- Consequential or incidental damages (please note, however, that some states do not allow the exclusion or limitation of consequential or incidental damages, so this limitation may not apply to you)
- Damages resulting from the use of the product with a defective water faucet.

How does state law relate to this warranty?

- This warranty gives you specific legal rights, and you may also have other rights that vary from state to state or province to province.

DO NOT USE THIS PRODUCT WITH WATER THAT IS MICROBIOLOGICALLY UNSAFE OR OF UNKNOWN QUALITY.

Systems certified for cyst reduction may be used on disinfected waters that may contain filterable cysts.

FOR PURCHASES MADE IN IOWA ONLY

Buyer

Name: _____

Address: _____

City: _____

State _____

Zip Code _____

Signature _____

Seller

Name: _____

Address: _____

City: _____

State _____

Zip Code _____

Signature _____

Free Manuals Download Website

<http://myh66.com>

<http://usermanuals.us>

<http://www.somanuals.com>

<http://www.4manuals.cc>

<http://www.manual-lib.com>

<http://www.404manual.com>

<http://www.luxmanual.com>

<http://aubethermostatmanual.com>

Golf course search by state

<http://golfingnear.com>

Email search by domain

<http://emailbydomain.com>

Auto manuals search

<http://auto.somanuals.com>

TV manuals search

<http://tv.somanuals.com>