

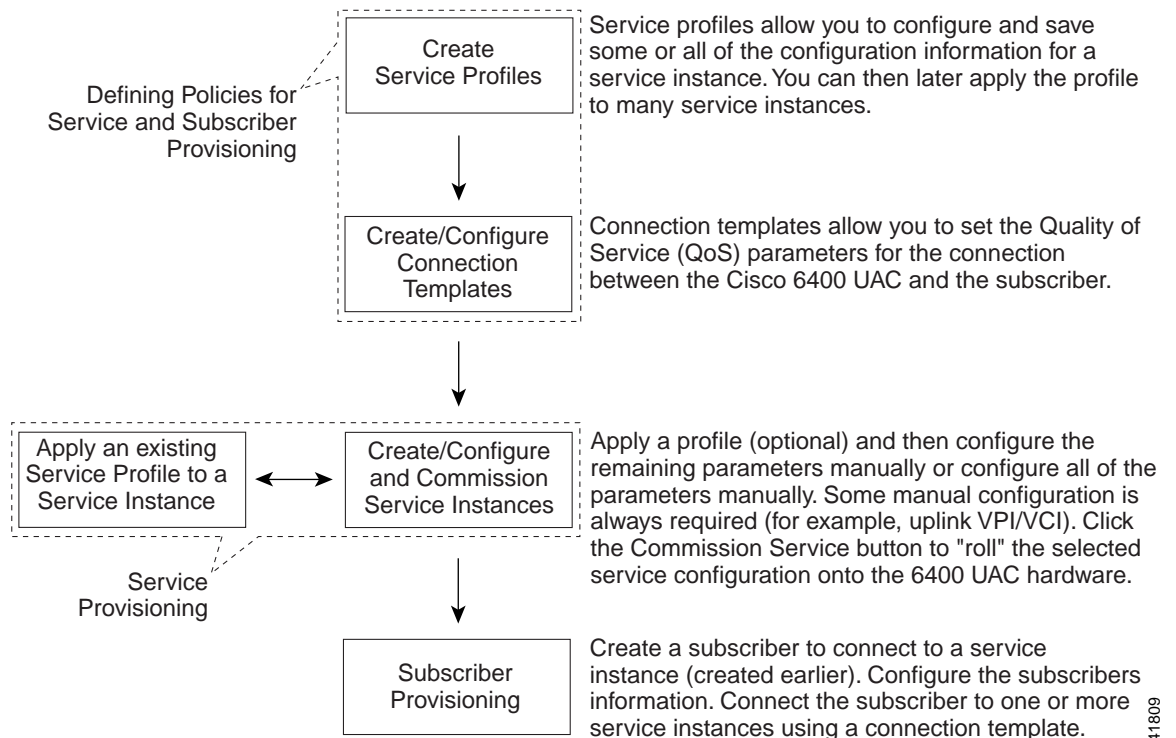


# Service/Subscriber Provisioning

The Cisco 6400 Service Connection Manager (SCM) allows you to make and manage network connections through a set of menu options available by right clicking on an appropriate Cisco 6400 Chassis, NSP, NRP, NLC, or port object in MapViewer window. These menu options allow you to create and configure services and subscribers, and to manage the subsequent connection of the subscribers to the services. Figure 9-1 describes the basic workflow for service and subscriber provisioning.

This chapter details the tasks you need to use during day to day service connection management and the name we use to describe combined service and subscriber provisioning.

**Figure 9-1 Service/Subscriber Provisioning Workflow**



41809

**Note**

Each of the windows that appear in this chapter are described in greater detail in Chapter 10, “Service/Subscriber Provisioning Windows: Detailed Description”.

See the “SCM Tasks” section on page 9-2 for details of the SCM tasks that you can execute and the objects that you select to begin the task.

## SCM Tasks

Table 9-1 This section describes the tasks that you execute from each object type using the Cisco 6400 SCM Manager (c6400Manager) view. For example, you would select a Site, Shelf or Chassis object when you wish to deploy a service instance object or select a Shelf or Chassis object when you wish to deploy a connection template.

**Table 9-1 Launch Points for Service Connection Management Tasks**

Cisco 6400 Task	Objects (that can be selected) to Open the Window										Menu Options to Select to Open Window
	Site	Shelf	Chassis	NSP	NRP	NRP ATM Port	Node Line Card	Node Line Card ATM Port	Service Instance	Subscriber	
Create Service Profiles	Yes	Yes	Yes	No	No	No	No	No	Yes	No	Cisco 6400 UAC, Profile, Configure, <i>service type</i>
Deploy Connection Template	No	Yes	Yes	No	No	No	No	No	No	No	Cisco 6400 UAC, Connection Template, Deploy
Connection Template Configuration	No	Yes	Yes	No	No	No	No	No	No	No	Cisco 6400 UAC, Connection Template, Configure Connection Template
Deploy Service Instance	Yes	Yes	Yes	No	No	No	No	No	Yes	No	Cisco 6400 UAC, Service, Deploy, <i>service type</i>
Configure and Commission a Service Instance	Yes	Yes	Yes	No	No	No	No	No	Yes	No	Cisco 6400 UAC, Service, Configure <i>service type</i>
Deploy Subscriber	Yes	Yes	Yes	No	No	Yes	No	Yes	No	No	Cisco 6400 UAC, Subscriber, Deploy
Configure Subscriber	Yes	Yes	Yes	No	No	Yes	No	Yes	No	Yes	Cisco 6400 UAC, Subscriber, Configure
Connect Subscriber	Yes	Yes	Yes	No	No	Yes	No	Yes	Yes	Yes	Cisco 6400 UAC, Subscriber, Connect
Disconnect Subscriber	Yes	Yes	Yes	No	No	Yes	No	Yes	Yes	Yes	Cisco 6400 UAC, Subscriber, Disconnect

## Defining Policies For Service Provisioning

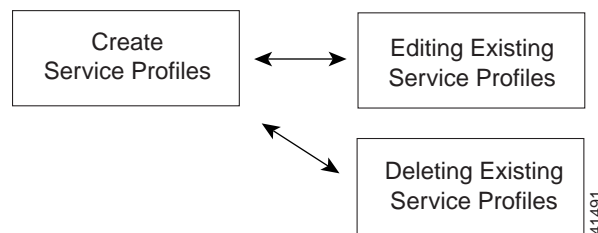
Many service providers and telecommunications carriers now offer tiered service levels to their customers and/or subscribers. These service levels are generally defined by the marketing policy of the carrier or service provider. Configuration of the Cisco 6400 SCM service and subscriber provisioning involves the definition of a large number of parameters that are common across these policies.

The Cisco 6400 SCM uses the concept of a configuration profile to simplify the definition of service parameters.

A configuration profile is a set of configuration parameters (or attributes) that you can set up in advance before the actual configuration operation. These profiles are saved in the Cisco EMF database. The Cisco 6400 SCM profiles speed up both subscriber provisioning and service provisioning.

Without profiles, you would have to enter a repetitive definition of the same (or similar) information for service or subscriber provisioning operations. For example, you may wish to define “bronze” (low data rate, inexpensive), “silver” and “gold” (high data rate, expensive) profiles for subscriber QoS using a connection template. Connection templates therefore provide a simple method of applying information for use during subscriber provisioning and saves retyping all of the QoS parameters individually for each new subscriber. A typical work flow is provided (see Figure 9-2) to help you.

*Figure 9-2 Defining Profiles For Service Provisioning*



This section describes how to access and configure the Cisco 6400 SCM Service Profile Configuration windows. The values that you select for each service depends on your network topology and market service offerings.

See the Chapter 10, “Service/Subscriber Provisioning Windows: Detailed Description” for further information on the meaning of each service topology and service parameter.

## Creating Service Profiles for a PPPoA-SD Service

Service profiles define configuration parameters for the uplink from the Cisco 6400 UAC to the service provider.

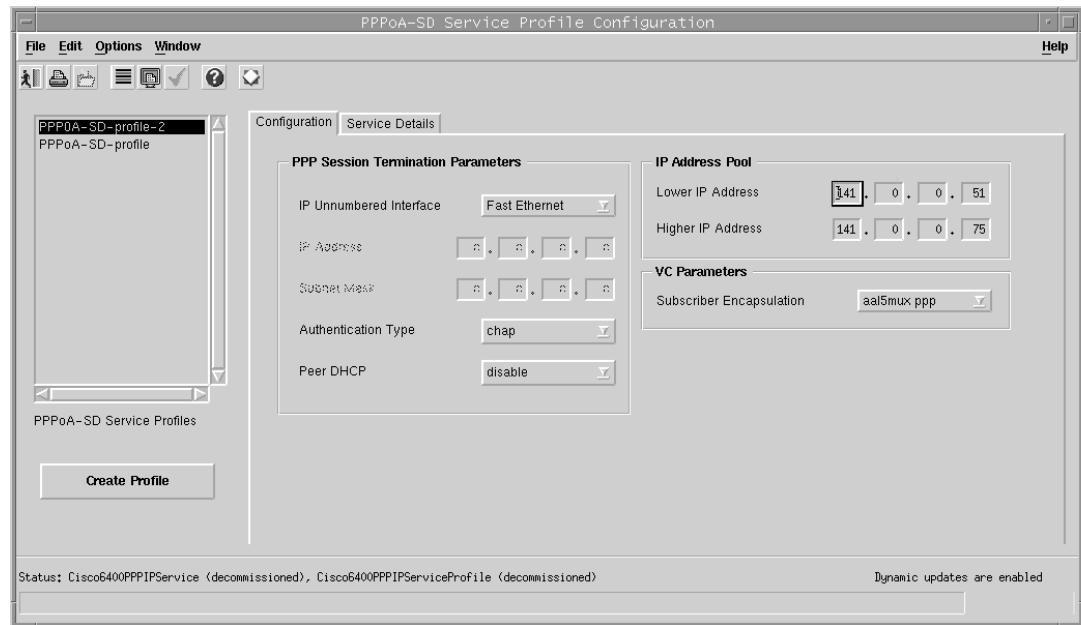
You can set up profiles and apply them or, alternatively, you can set up and apply a profile with some of the parameters set and then configure the remaining parameters manually. The services available on the Cisco 6400 UAC have a number of parameters to configure. It is worth setting up a number of different service profiles with at least some of the values complete (that can be applied later) to save time.

To create a PPPoA-SD service profile, follow these steps:

- Step 1** Select the **Cisco 6400 UAC, Profiles, Configure PPPoA-SD Service Profiles** option from a Site, Shelf, Chassis, or service instance object in the MapViewer window. Profiles are “globally” available within the Cisco 6400 SCM.

The PPPoA-SD Service Profile Configuration window appears with the Configuration tab displayed.

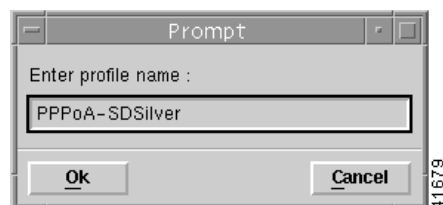
*Figure 9-3 PPPoA-SD Service Profile Configuration Window (Configuration Tab)*



- Step 2** Select **Create Profile**.

A Prompt window appears (see Figure 9-4) for you to enter a name for your new profile.

*Figure 9-4 Prompt Window*



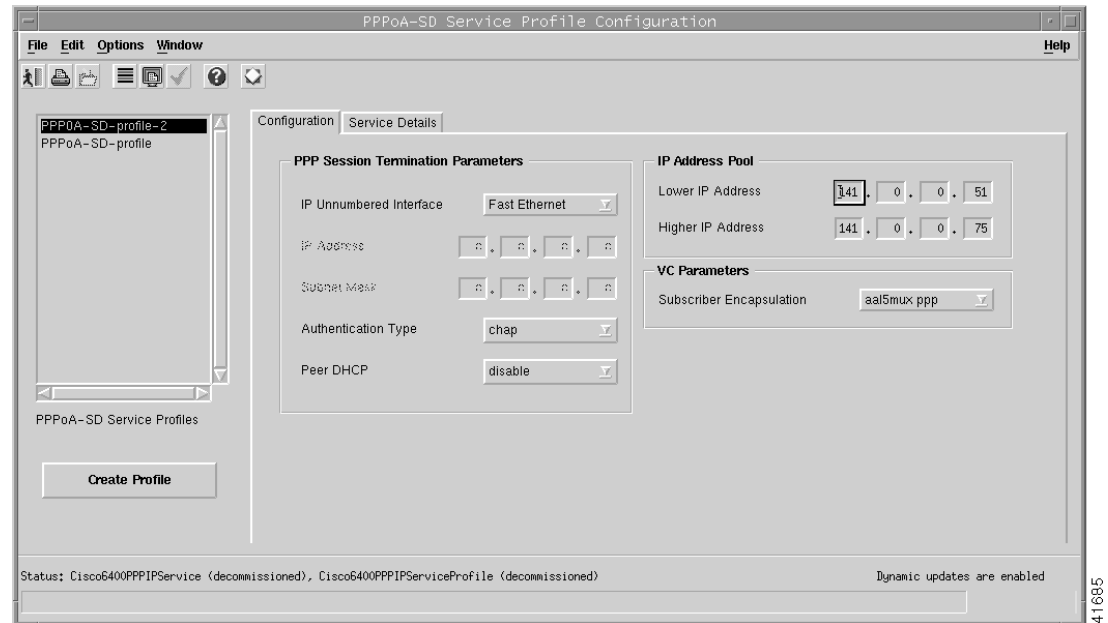
- Step 3** Enter a name for the profile in the Enter profile name data entry box. PPPoA-SDSilver was entered in the example shown in Figure 9-4.



**Note** Each service profile must have a unique name. Do not insert spaces into a service profile name.

The PPPoA-SD Service Profile Configuration window reappears with the new profile name displayed in the PPPoA-SD Service Profiles list at left side of the window (see Figure 9-5).

*Figure 9-5 PPPoA-SD Service Profile Configuration Window (Configuration Tab)*



**Note** Select the **Copy** and **Copy Page Configuration** options in the **Edit** menu to cut and paste between different profiles. This is useful when you wish to copy profile information from one to the next.

- Step 4** Configure the parameters in the PPP Session Termination Parameters panel, as required. The PPP Session Termination Parameters describe the PPP characteristics used to terminate the incoming PPP traffic. You should set the parameters appropriate to your network topology and services offered.



**Note** You can apply an existing profile to a new profile to save time when configuring new profiles. Select the **Apply Profile** option from the **Edit** menu and then select the existing profile you wish to apply from the profiles listed. The configuration settings are copied from the existing profile to the new profile. The settings copied appear in blue.

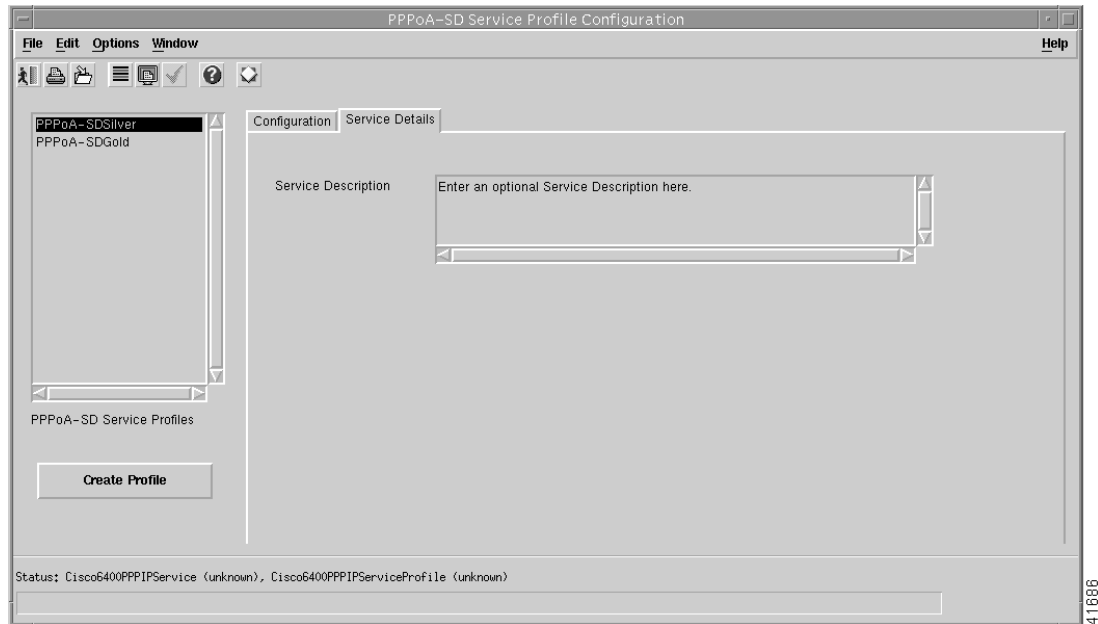
- Step 5** Enter values for the Lower and Higher IP Addresses into the IP Address Pool panel, as required. The IP Address Pool set the range of IP addresses available to a subscriber.



**Note** If you select to **enable** the Peer DHCP option, it appears that you are using an external DHCP Server for IP address allocation, and values entered into the IP Address Pool panel are grayed out and ignored.

- Step 6** Select a **Subscriber Encapsulation** type in the VC Parameters panel. The VC Parameters define the characteristics of the incoming ATM traffic.
- Step 7** Select the **Service Details** tab (see Figure 9-6).

*Figure 9-6 PPPoA-SD Service Profile Configuration Window (Service Details Tab)*



- Step 8** Enter a description into the Service Description data entry box in the Service Details panel, if required.



**Note** Entering a Service Description is optional.

- Step 9** Select **Save** from the **File** menu to save the parameters you have selected for your service profile.
- Step 10** Select **Close** from the **File** menu to close the window.

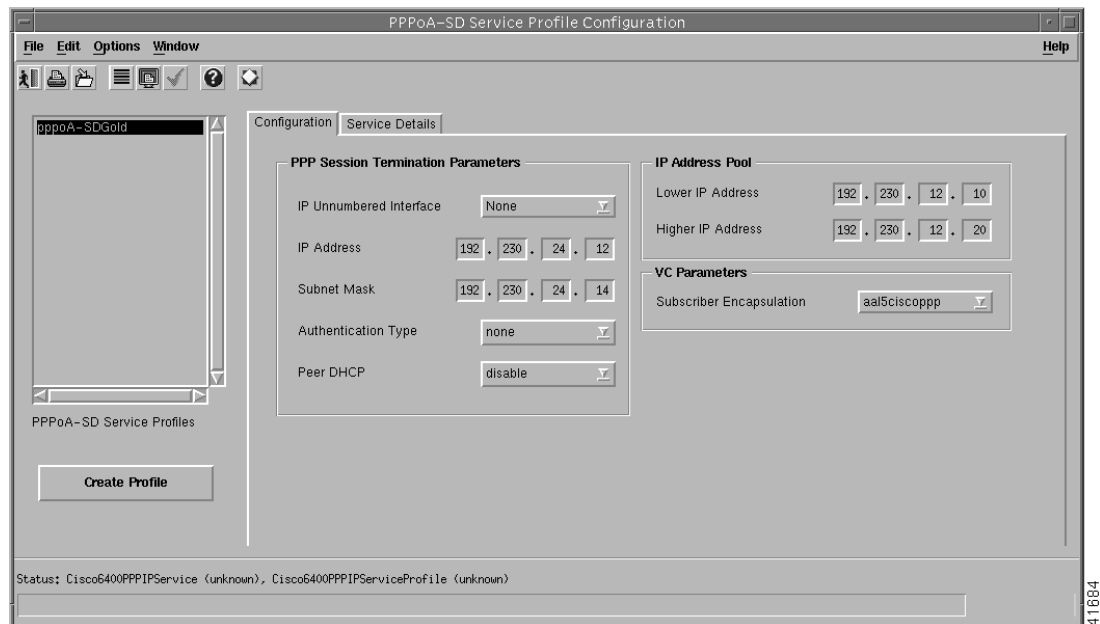
## Editing an Existing PPPoA-SD Service Profile

To edit an existing PPPoA-SD service profile, follow these steps:

- Step 1** Select the **Cisco 6400 UAC, Profiles, Configure PPPoA-SD Service Profiles** option from a Site, Shelf, Chassis, or service instance object in the MapViewer window.

The PPPoA-SD Service Profile Configuration window appears with the PPPoA-SD Configuration tab displayed. Existing service profiles are displayed in the PPPoA-SD Service Profiles list at the left side of the window.

*Figure 9-7 PPPoA-SD Service Profile Configuration Window (PPPoA-SD Configuration Tab)*



- Step 2** Select the profile you wish to edit from the list of profiles displayed in the PPPoA-SD Service Profiles list.
- Step 3** Edit the parameters displayed in the Configuration and Service Details tabs, as required.
- Step 4** Select **Save** from the **File** menu to save the changes made to the service profile.
- Step 5** Select **Close** from the **File** menu to close the window.

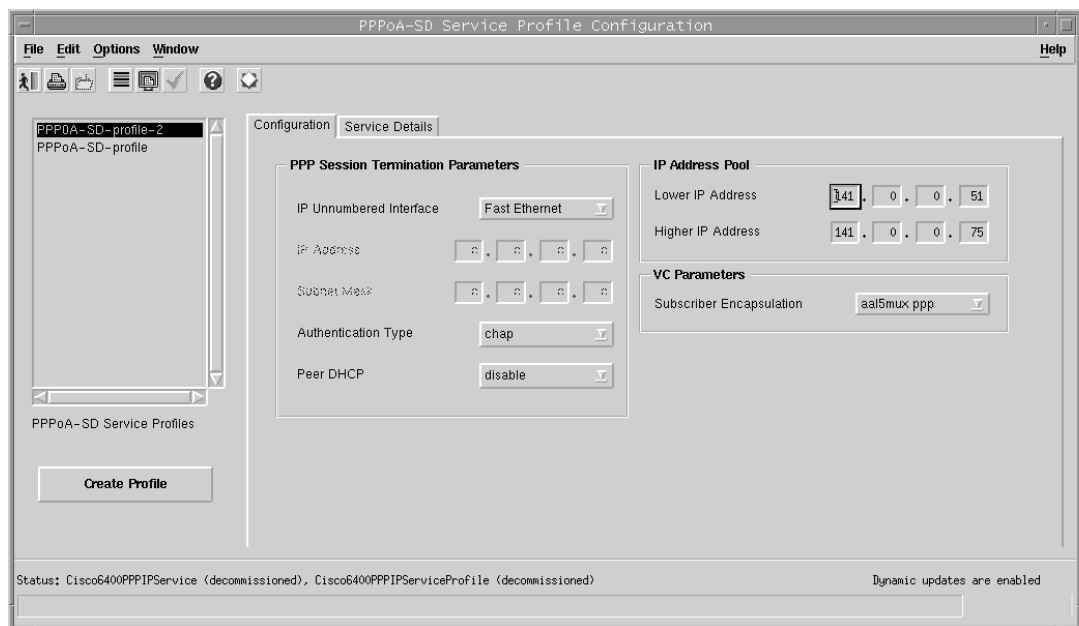
## Deleting an Existing PPPoA-SD Service Profile

To delete an existing PPPoA service profile, follow these steps:

- Step 1** Select the **Cisco 6400 UAC, Profiles, Configure PPPoA-SD Service Profiles** option from a Site, Shelf, Chassis, or service instance object in the MapViewer window.

The PPPoA-SD Service Profile Configuration window appears. Existing service profiles are displayed in the **PPPoA-SD Service Profiles** list on the left side of the window.

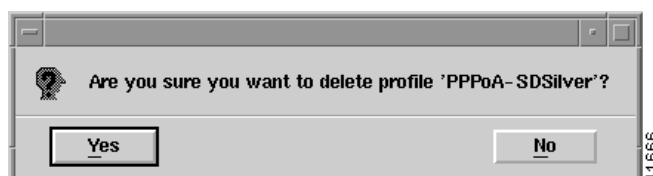
*Figure 9-8 PPPoA-SD Service Profile Configuration Window (PPPoA-SD Configuration Tab)*



- Step 2** Select the existing service profile (displayed in the PPPoA-SD Service Profiles list) that you wish to delete.
- Step 3** Select the **Delete Profile** option from the **Edit** menu. Select the profile you wish to delete from the list displayed.

A Deletion Prompt window appears (see Figure 9-9) for you to confirm that you wish to delete the selected profile.

*Figure 9-9 Deletion Prompt Window*



- Step 4** Click **Yes** to delete the selected profile or click **No** to close the window without deleting the profile.
- When a profile is deleted it disappears from the list of PPPoA Service Profiles in the PPPoA-SD Service Profile Configuration window.



## Creating Service Profiles for an L2TP Service

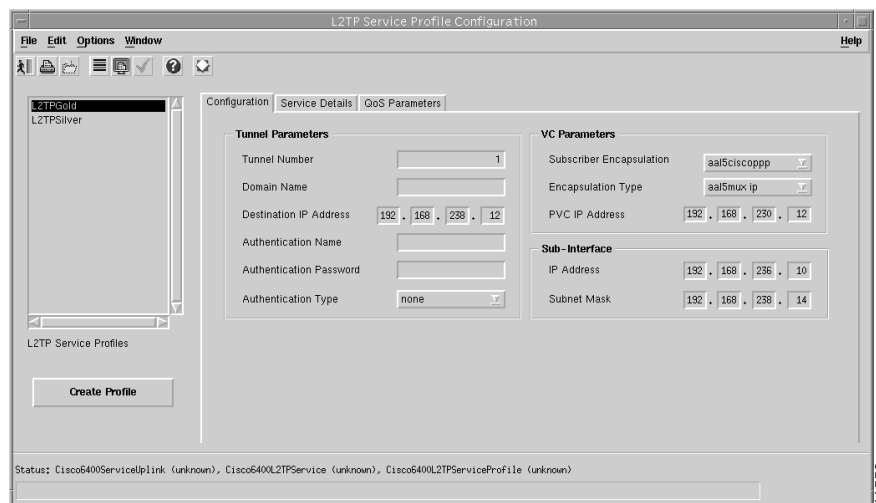
L2TP service profiles define the configuration parameters for the uplink from the Cisco 6400 UAC to the service provider. You can set up profiles and apply them to the relevant NRP or, alternatively, you can set up and apply a profile with some of the parameters set and then configure the remaining parameters manually. The services available on the Cisco 6400 UAC have a number of parameters to configure. It is worth setting up a number of different service profiles with at least some of the values complete (that can be applied later) to save time.

To create an L2TP service profile, follow these steps:

- Step 1** Select the **Cisco 6400 UAC, Profiles, Configure L2TP Service Profiles** option from a Site, Shelf, Chassis, or service instance object in the MapViewer window. Profiles are “globally” available within the Cisco 6400 SCM.

The L2TP Service Profile Configuration window appears with the Configuration tab displayed.

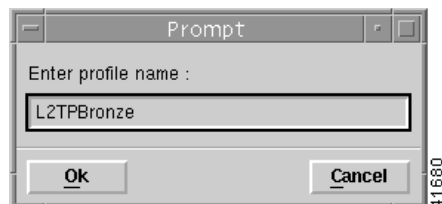
*Figure 9-10 L2TP Service Profile Configuration Window (Configuration Tab)*



- Step 2** Select **Create Profile**.

A Prompt window appears (see Figure 9-11) for you to enter a name for your new profile.

*Figure 9-11 Prompt Window*



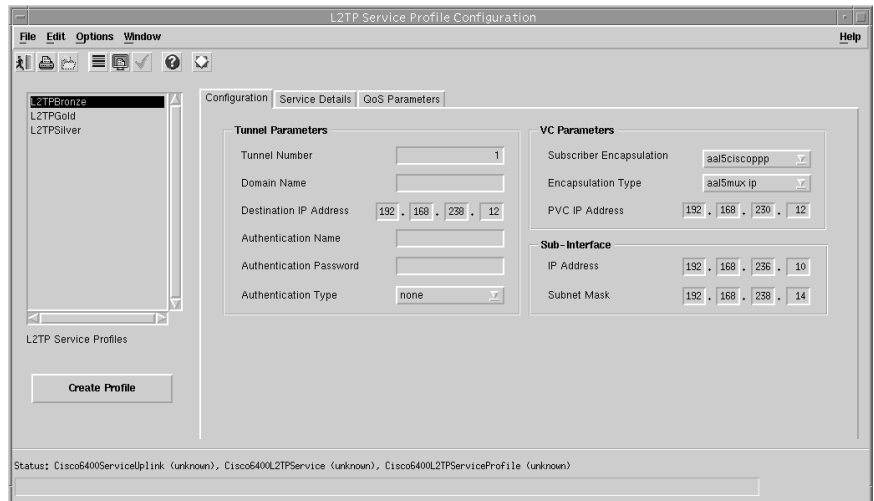
- Step 3** Enter a name for the profile in the Enter profile name data entry box. L2TP Bronze was entered in the example shown in Figure 9-11.



**Note** Each service profile must have a unique name. Do not insert spaces into a service profile name.

The L2TP Service Profile Configuration window reappears with the name of the new profile displayed in the L2TP Service Profiles list at left side of the window. See the “L2TP Service Profile Configuration Window” section on page 10-4 for details of the parameters displayed.

*Figure 9-12 L2TP Service Profile Configuration Window (Configuration Tab)*



**Note** Select the **Copy** and **Copy Page Configuration** options in the **Edit** menu to cut and paste between different profiles. This is useful when you wish to copy profile information from one to the next.

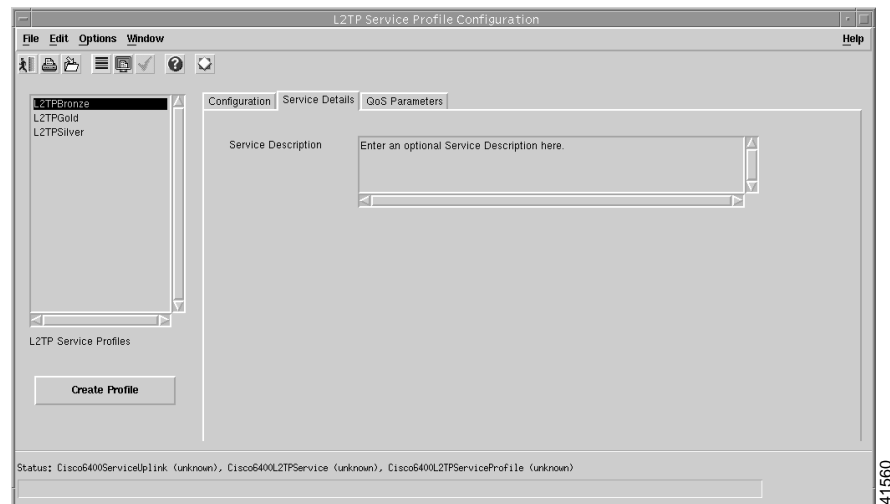
**Step 4** Configure the parameters displayed in the L2TP Configuration tab as required.



**Note** You can apply an existing profile to a new profile to save time when configuring new profiles. Select the **Apply Profile** option from the **Edit** menu and then select the existing profile you wish to apply from the profiles listed. The configuration settings are copied from the existing profile to the new profile. The settings copied appear in blue.

**Step 5** Select the **Service Details** tab.

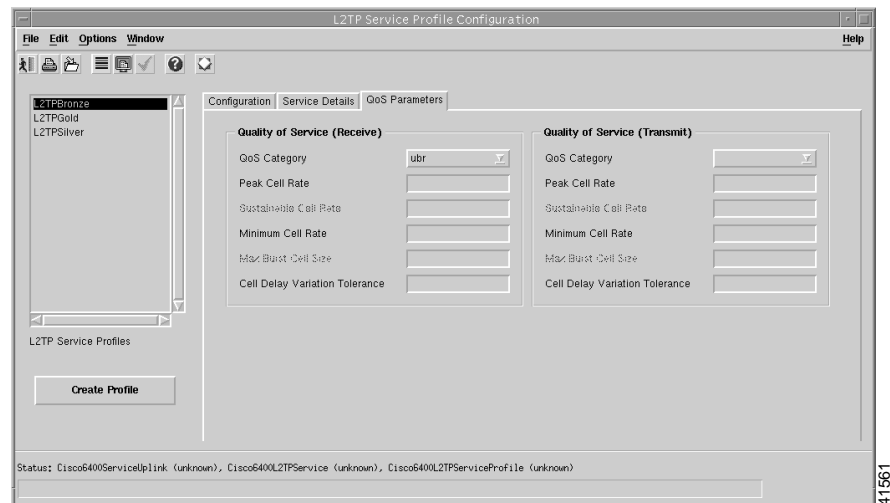
*Figure 9-13 L2TP Service Profile Configuration Window (Service Details Tab)*



**Step 6** Enter a description into the Service Description data entry box in the Service Details panel, when required. Entering a Service Description is optional.

**Step 7** Select the **QoS Parameters** tab.

*Figure 9-14 L2TP Service Profile Configuration Window (QoS Parameters Tab)*



**Step 8** Configure the parameters displayed on the QoS Parameters tab, as required.

**Step 9** Select **Save** from the **File** menu to save the parameters you have selected for your service profile.

**Step 10** Select **Close** from the **File** menu to close the window.

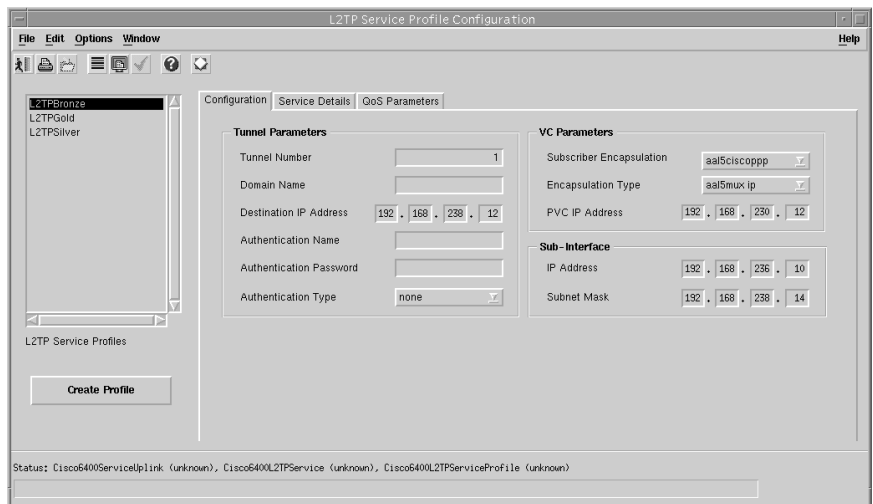
## Editing an Existing L2TP Service Profile

To edit an existing L2TP service profile, follow these steps:

- Step 1** Select the **Cisco 6400 UAC, Profiles, Configure L2TP Service Profiles** option from a Site, Shelf, Chassis, or service instance object in the MapViewer window.

The L2TP Service Profile Configuration window appears with the L2TP Configuration tab displayed. Existing service profiles are displayed in the L2TP Service Profiles list at the left side of the window.

*Figure 9-15 L2TP Service Profile Configuration Window (Configuration Tab)*



- Step 2** Select the profile you wish to edit from the list of profiles displayed in the PPPoA-SD Service Profiles list.
- Step 3** Edit the parameters displayed in the Configuration, Service Details and QoS Parameters tabs as required.
- Step 4** Select **Save** from the **File** menu to save the changes made to the service profile.
- Step 5** Select **Close** from the **File** menu to close the window.

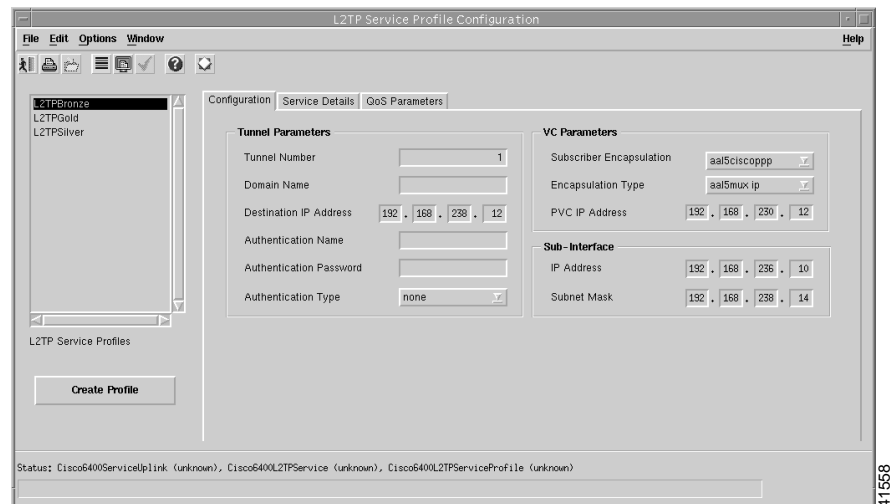
## Deleting an Existing L2TP Service Profile

To delete an existing L2TP service profile, follow these steps:

- Step 1** Select the **Cisco 6400 UAC, Profiles, Configure L2TP Service Profiles** option from a Site, Shelf, Chassis, or service instance object in the MapViewer window.

The L2TP Service Profile Configuration window appears. Existing service profiles are displayed in the L2TP Service Profiles list on the left side of the window.

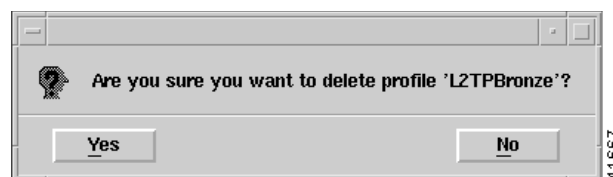
*Figure 9-16 L2TP Service Profile Configuration Window (L2TP Configuration Tab)*



- Step 2** Select the **Delete Profile** option from the **Edit** menu. Select the profile you wish to delete from the list displayed.

A Deletion Prompt window appears (see Figure 9-9) for you to confirm that you wish to delete the selected profile.

*Figure 9-17 Deletion Prompt Window*



- Step 3** Click **Yes** to delete the selected profile or click **No** to close the window without deleting the profile.
- Step 4** When a profile is deleted it disappears from the list of L2TP Service Profiles in the L2TP Service Profile Configuration window.

## Creating Service Profiles for an RFC1483 Bridging Service

Service profiles define configuration parameters for the uplink from the Cisco 6400 UAC to the service provider.

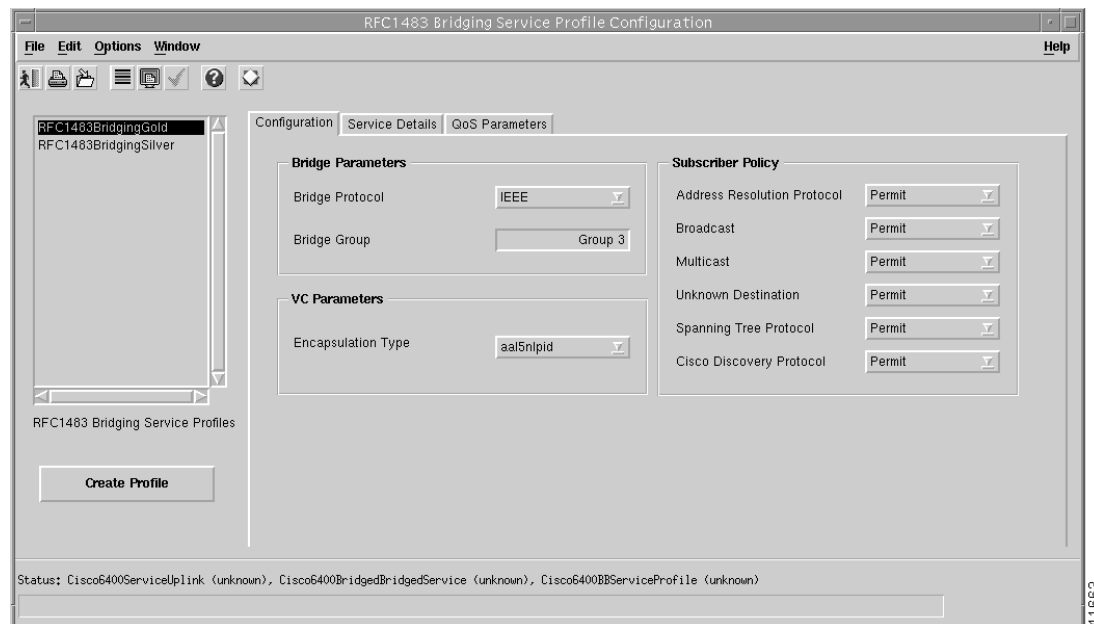
You can set up profiles and apply them or, alternatively, you can set up and apply a profile with some of the parameters set and then configure the remaining parameters manually. The services available on the Cisco 6400 UAC have a number of parameters to configure. It is worth setting up a number of different service profiles with at least some of the values complete (that can be applied later) to save time.

To create an RFC1483 Bridging service profile, follow these steps:

- Step 1** Select the **Cisco 6400 UAC, Profiles, Configure RFC1483 Bridging Service Profiles** option from a Site, Shelf, Chassis, or service instance object in the MapViewer window. Profiles are “globally” available within the Cisco 6400 SCM.

The RFC1483 Bridging Service Profile Configuration window appears:

*Figure 9-18 RFC1483 Bridging Service Profile Configuration Window (Configuration Tab)*



- Step 2** Select **Create Profile**. A Prompt window appears (see Figure 9-19).

*Figure 9-19 Prompt Window*



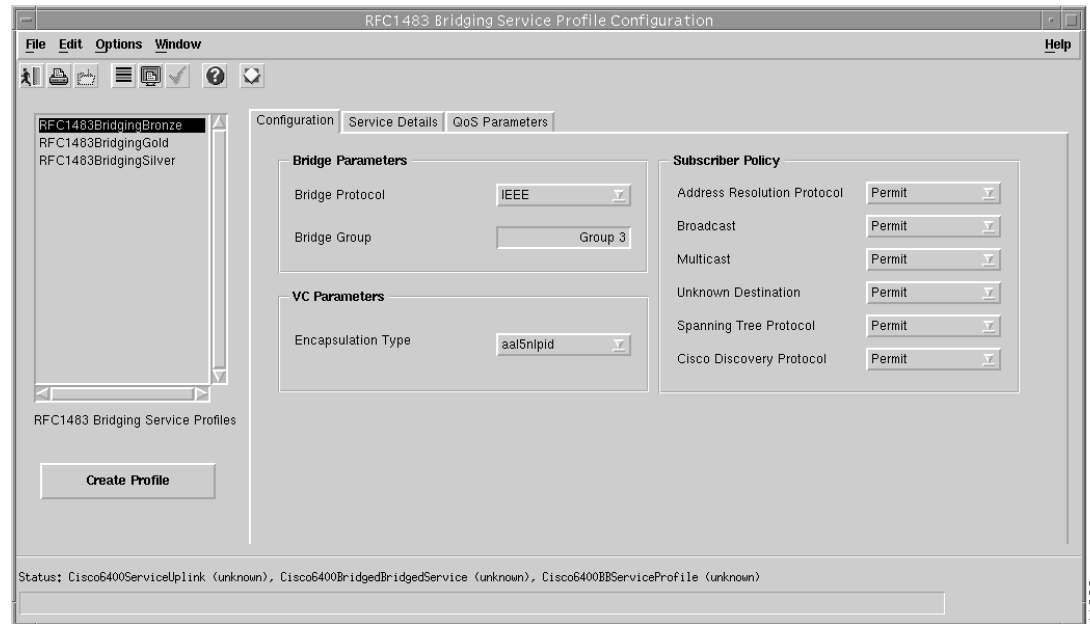
**Step 3** Enter a name for the profile in the Enter profile name data entry box.



**Note** Each service profile must have a unique name. Do not insert spaces into a service profile name.

**Step 4** BR1483 Bridging Bronze was entered in the example shown in Figure 9-19. The new profile name appears in the BB Service Profiles list at left side of the window (see Figure 9-20).

*Figure 9-20 RFC1483 Bridging Service Profile Configuration Window (Configuration Tab)*



**Note** Select the **Copy** and **Copy Page Configuration** options in the **Edit** menu to cut and paste between different profiles. This is useful when you wish to copy profile information from one to the next.

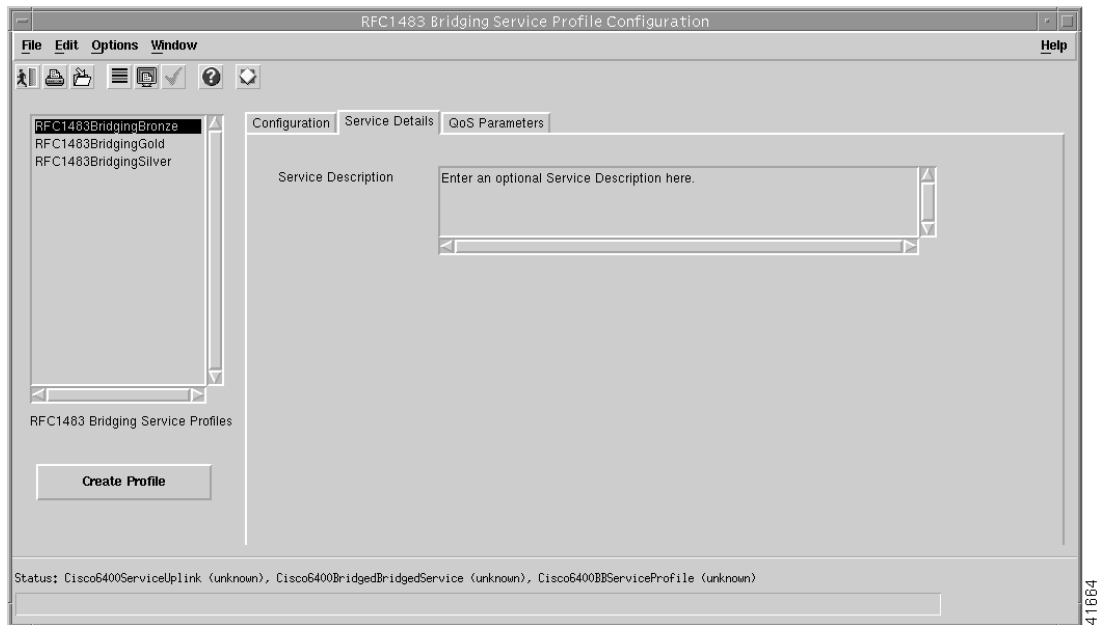
**Step 5** Configure the parameters displayed in the Configuration tab, as required. See the “RFC1483 Bridging Service Profile Configuration Window” section on page 10-7 for details of the parameters displayed on each of the tabs.



**Note** You can apply an existing profile to a new profile to save time when configuring new profiles. Select the **Apply Profile** option from the **Edit** menu and then select the existing profile you wish to apply from the profiles listed. The configuration settings are copied from the existing profile to the new profile. The settings copied appear in blue.

**Step 6** Select the **Service Details** tab (see Figure Figure 9-21).

*Figure 9-21 RFC1483 Bridging Service Profile Configuration Window (Service Details Tab)*

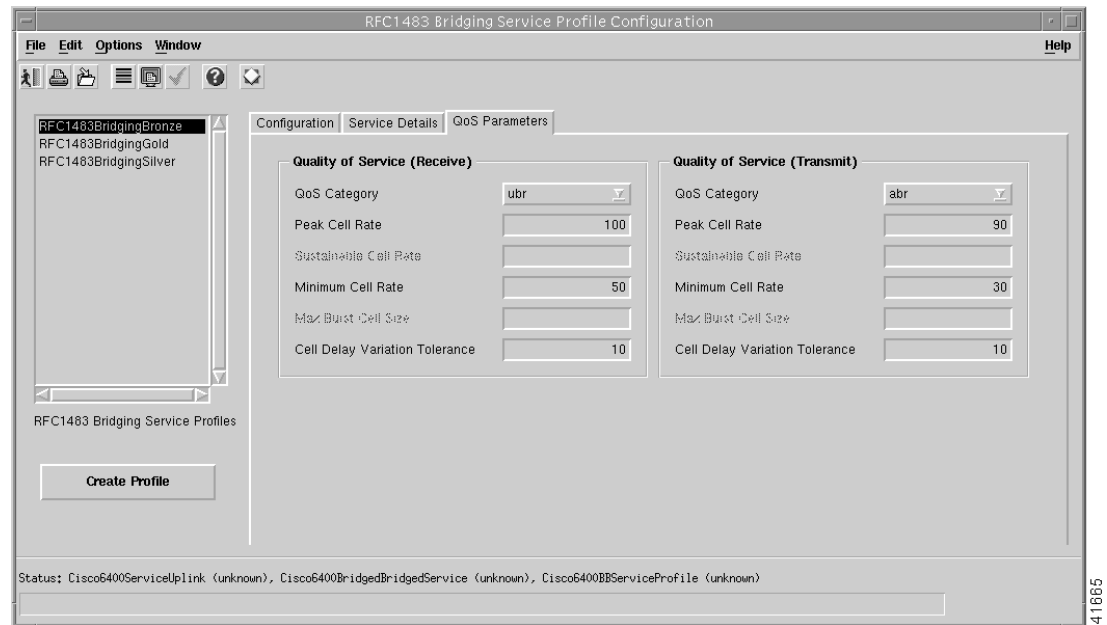


**Step 7** Enter a description into the Service Description data entry box in the Service details panel, if required. Entering a Service Description is optional.



**Step 8** Select the **QoS Parameters** tab (see Figure 9-22).

*Figure 9-22 RFC1483 Bridging Service Profile Configuration Window (QoS Parameters Tab)*



**Step 9** Configure the parameters displayed in the QoS Parameters tab, as required.

**Step 10** Select **Save** from the **File** menu to save the parameters you have selected for your service profile.

**Step 11** Select **Close** from the **File** menu to close the window.

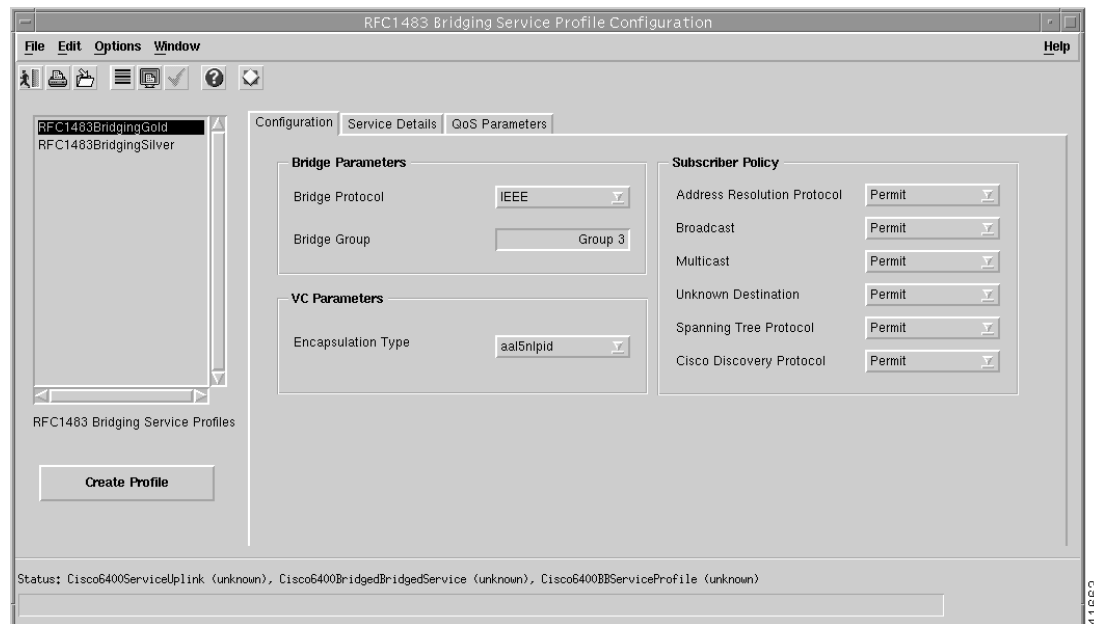
## Editing an Existing RFC1483 Bridging Service Profile

To edit an existing RFC1483 Bridging service profile, follow these steps:

- Step 1** Select the **Cisco 6400 UAC, Profiles, Configure RFC1483 Bridging Service Profiles** option from a Site, Shelf, Chassis, or service instance object in the MapViewer window.

The RFC1483 Bridging Service Profile Configuration window appears with the Service Details tab displayed. Existing service profiles are displayed in the BB Service Profiles list at the left side of the window.

*Figure 9-23 RFC1483 Bridging Service Profile Configuration Window (BB Configuration Tab)*



- Step 2** Select the profile you wish to edit from the list of profiles displayed in the RFC1483 Bridging Service Profiles list.
- Step 3** Edit the parameters displayed in the Configuration, Service Details, and QoS Parameters tabs, as required.
- Step 4** Select **Save** from the **File** menu to save the changes made to the service profile.
- Step 5** Select **Close** from the **File** menu to close the window.

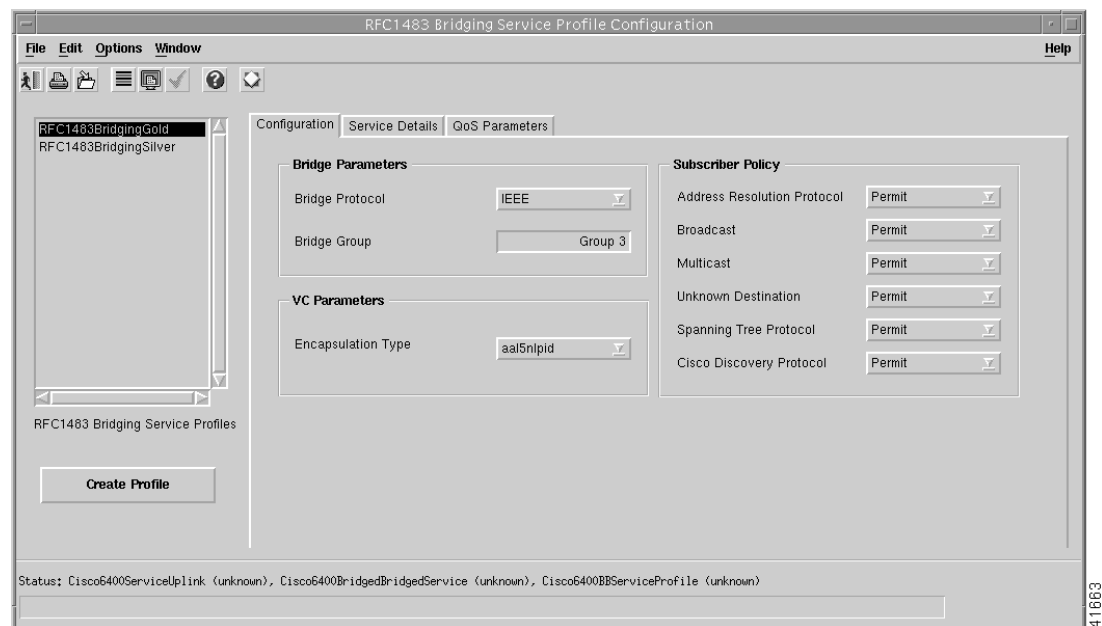
## Deleting an Existing RFC1483 Bridging Service Profile

To delete an existing RFC1483 Bridging service profile, follow these steps:

- Step 1** Select the **Cisco 6400 UAC, Profiles, Configure RFC1483 Bridging Service Profiles** option from a Site, Shelf, Chassis, or service instance object in the MapViewer window.

The RFC1483 Bridging Service Profile Configuration window appears. Existing service profiles are displayed in the BB Service Profiles list on the left side of the window.

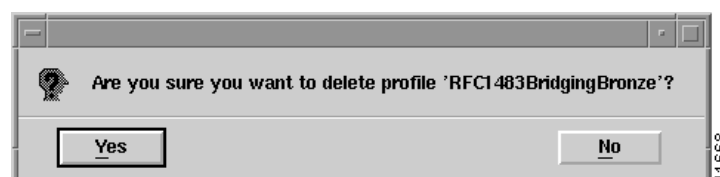
*Figure 9-24 RFC1483 Bridging Service Profile Configuration Window (Configuration Tab)*



- Step 2** Select the existing service profile (displayed in the RFC1483 Bridging Service Profiles list) that you wish to delete.
- Step 3** Select the **Delete Profile** option from the **Edit** menu. Select the profile you wish to delete from the list displayed.

A Deletion Prompt window appears (see Figure 9-25) for you to confirm that you wish to delete the selected profile.

*Figure 9-25 Deletion Prompt Window*



- Step 4** Click **Yes** to delete the selected profile or click **No** to close the window without deleting the profile. When a profile is deleted it disappears from the list of RFC1483 Bridging Service Profiles in the RFC1483 Bridging Service Profile Configuration window.

## Creating Service Profiles for an RFC1483 IRB Service

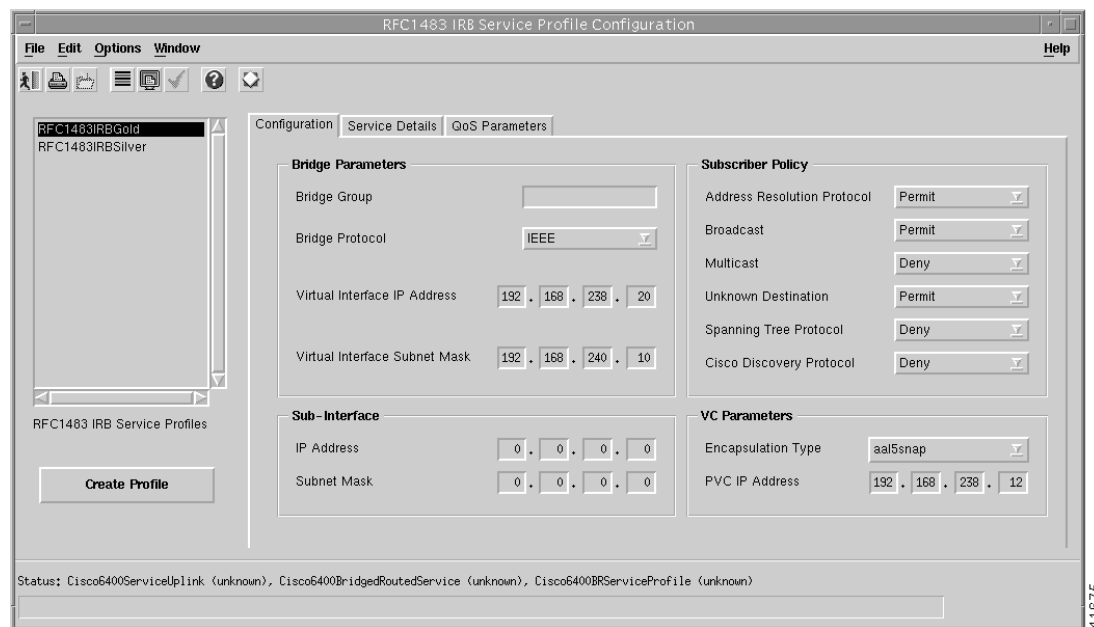
Service profiles define configuration parameters for the uplink from the Cisco 6400 UAC to the service provider.

You can set up profiles and apply them or, alternatively, you can set up and apply a profile with some of the parameters set and then configure the remaining parameters manually. The services available on the Cisco 6400 UAC have a number of parameters to configure. It is worth setting up a number of different service profiles with at least some of the values complete (that can be applied later) to save time.

To create an RFC1483 IRB service profile, follow these steps:

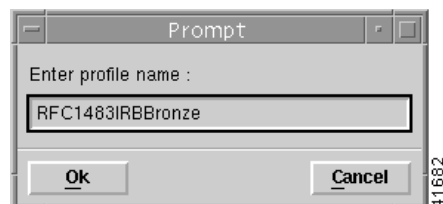
- Step 1** Select the **Cisco 6400 UAC, Profiles, Configure RFC1483 IRB Service Profiles** option from a Site, Shelf, Chassis, or service instance object in the MapViewer window. Profiles are “globally” available within the Cisco 6400 SCM. The RFC1483 IRB Service Profile Configuration window appears with the Configuration tab displayed:

*Figure 9-26 RFC1483 IRB Service Profile Configuration Window (Configuration Tab)*



- Step 2** Select **Create Profile**. A Prompt window appears (see Figure 9-27).

*Figure 9-27 Prompt Window*



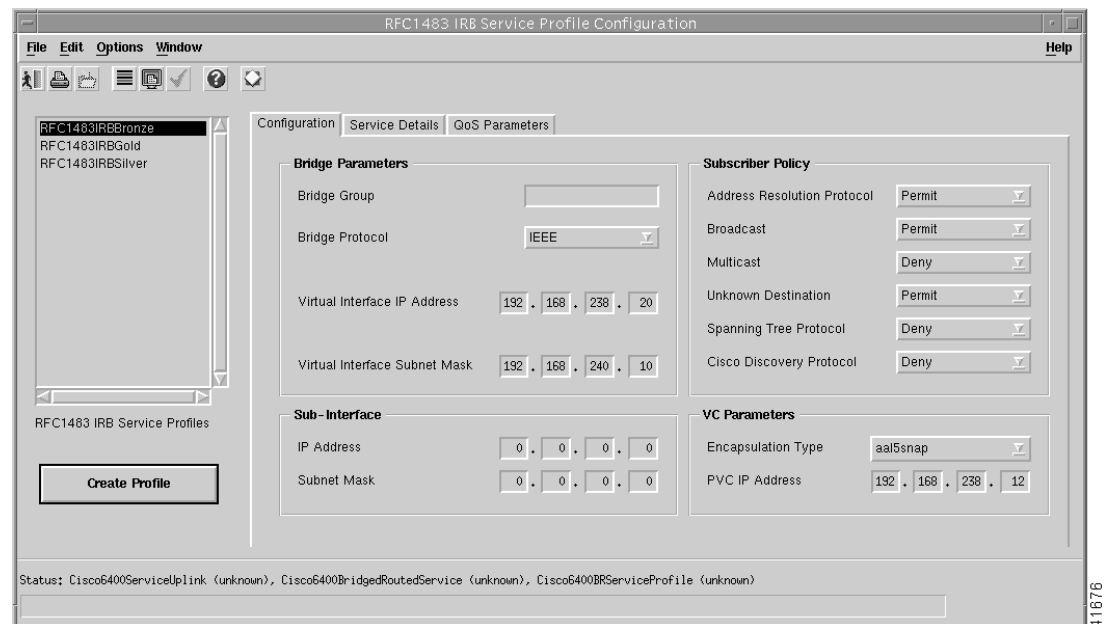
- Step 3** Enter a name for the profile in the **Enter profile name** data entry box. **Premium Profile** was entered in the example shown in Figure 9-27.



**Note** Each service profile must have a unique name. Do not insert spaces into a service profile name.

The new profile name displays in the **BR Service Profiles** list at left side of the window (see Figure 9-28).

*Figure 9-28 RFC1483 IRB Service Profile Configuration Window (Configuration Tab)*



**Note** Select the **Copy** and **Copy Page Configuration** options in the **Edit** menu to cut and paste between different profiles. This is useful when you wish to copy profile information from one to the next.

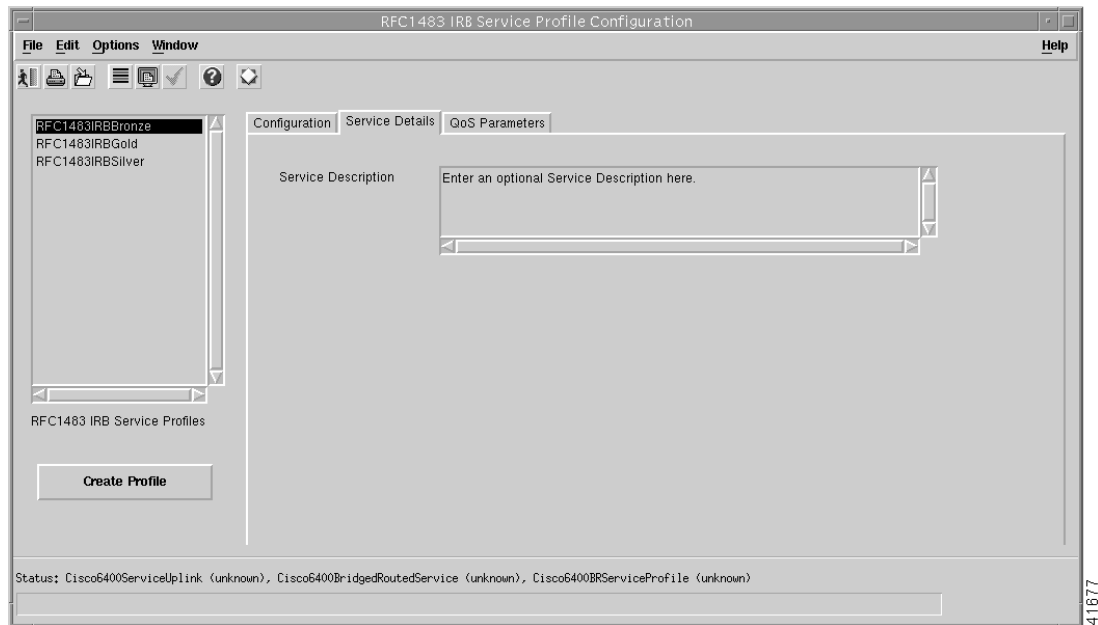
- Step 4** Configure the parameters displayed in the Configuration tab as required. See the “RFC1483 IRB Service Profile Configuration Window” section on page 10-11 for details of the parameters displayed on each of the tabs.



**Note** You can apply an existing profile to a new profile to save time when configuring new profiles. Select the **Apply Profile** option from the **Edit** menu and then select the existing profile you wish to apply from the profiles listed. The configuration settings are copied from the existing profile to the new profile. The settings copied appear in blue.

**Step 5** Select the **Service Details** tab (see Figure 9-29).

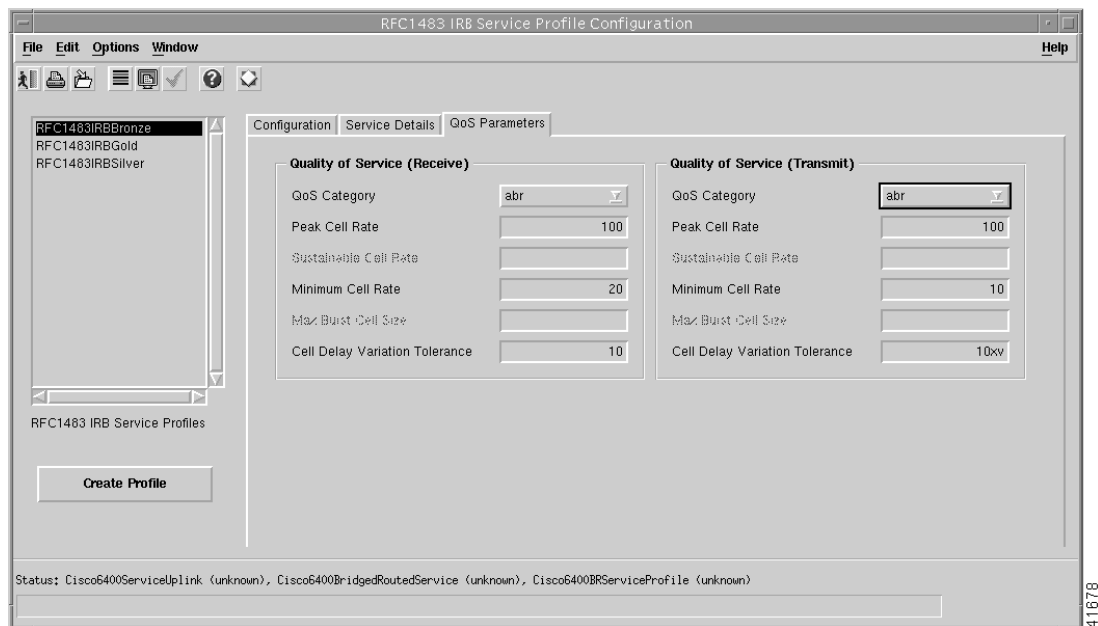
*Figure 9-29 RFC1483 IRB Service Profile Configuration Window (Service Details Tab)*



**Step 6** Enter a description into the Service Description data entry box in the Service Details panel, as required. Entering a Service description is optional.

**Step 7** Select the **QoS Parameters** tab.

*Figure 9-30 RFC1483 IRB Service Profile Configuration Window (QoS Parameters Tab)*



- Step 8 Configure the parameters displayed in the **QoS Parameters** tab as required.
- Step 9 Select **Save** from the **File** menu to save the parameters you have selected for your service profile.
- Step 10 Select **Close** from the **File** menu to close the window.

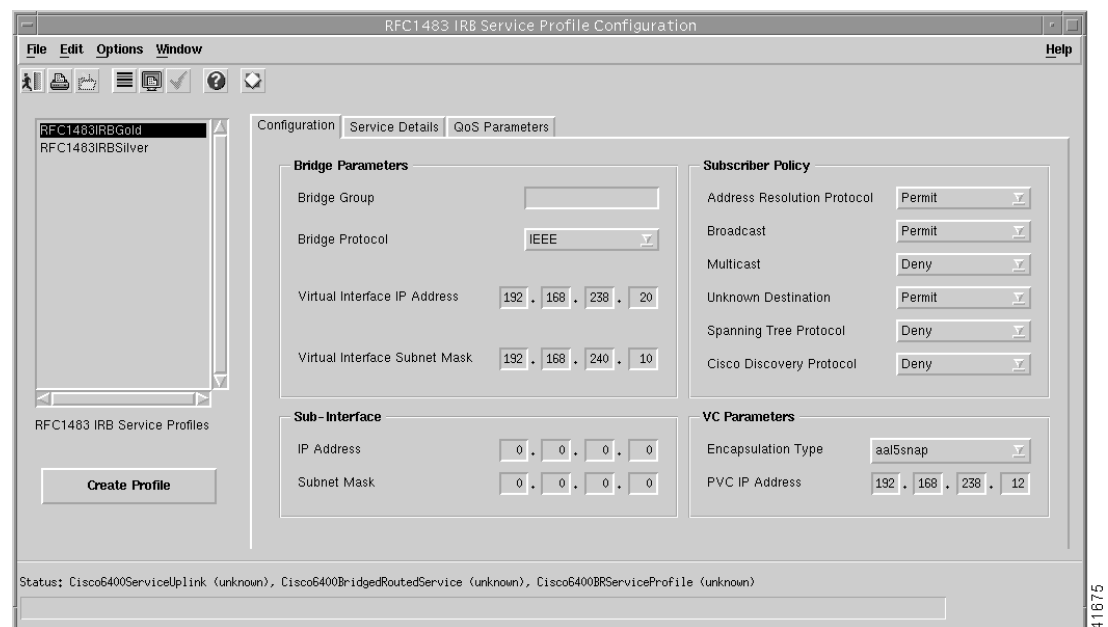
## Editing an Existing RFC1483 IRB Service Profile

To edit an existing RFC1483 IRB service profile, follow these steps:

- Step 1 Select the **Cisco 6400 UAC, Profiles, Configure RFC1483 IRB Service Profiles** option from a Shelf, Chassis, or service instance object in the MapViewer window.

The RFC1483 IRB Service Profile Configuration window appears with the **BR Configuration** tab displayed. Existing service profiles are displayed in the **BR Service Profiles** list at the left side of the window.

*Figure 9-31 RFC1483 Bridging Service Profile Configuration Window (Configuration Tab)*



- Step 2 Select the profile you wish to edit from the list of profiles displayed in the **RFC1483 IRB Service Profiles** list.
- Step 3 Edit the parameters displayed in the Configuration, Service Details, and QoS Parameters tabs, as required.
- Step 4 Select **Save** from the **File** menu to save the changes made to the service profile.
- Step 5 Select **Close** from the **File** menu to close the window.

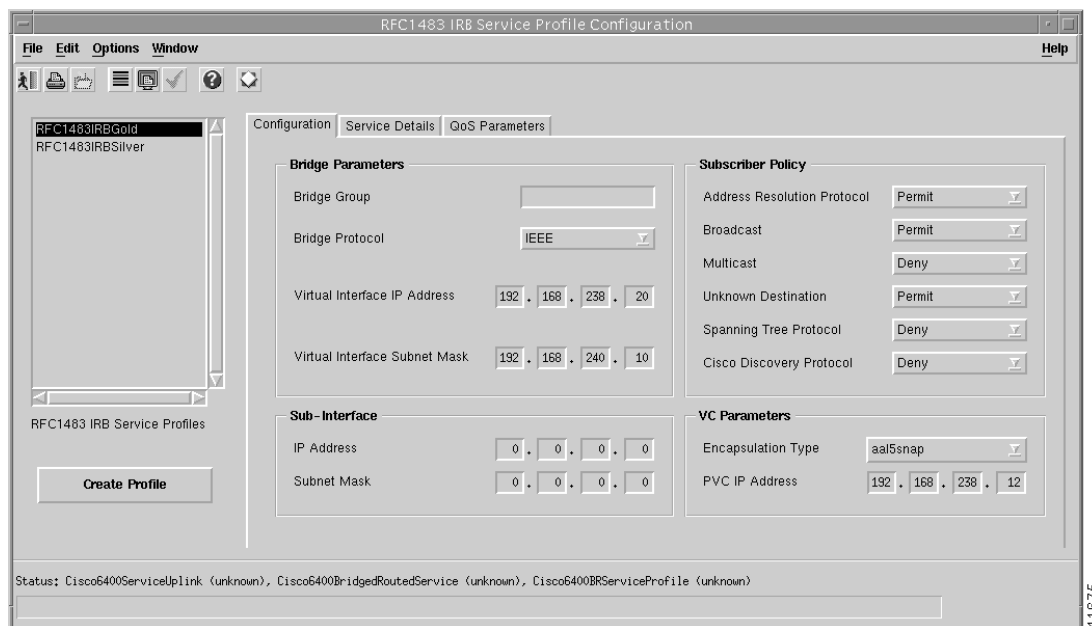
## Deleting an Existing RFC1483 IRB Service Profile

To delete an existing IRB service profile, follow these steps:

- Step 1** Select the **Cisco 6400 UAC, Profiles, Configure RFC1483 IRB Service Profiles** option from a Site, Shelf, Chassis, or service instance object in the MapViewer window.

The RFC1483 IRB Service Profile Configuration window appears. Existing service profiles are displayed in the **BR Service Profiles** list on the left side of the window.

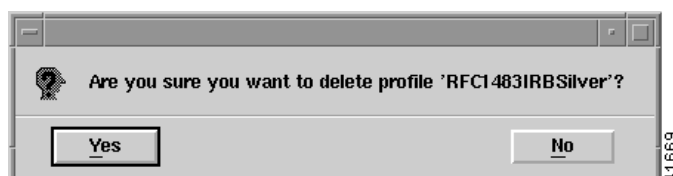
*Figure 9-32 RFC1483 IRB Service Profile Configuration Window (BR Configuration Tab)*



- Step 2** Select the existing service profile (displayed in the RFC1483 IRB Service Profiles list) that you wish to delete.
- Step 3** Select the **Delete Profile** option from the **Edit** menu. Select the profile you wish to delete from the list displayed.

A Deletion Prompt window appears (see Figure 9-33) for you to confirm that you wish to delete the selected profile.

*Figure 9-33 Deletion Prompt Window*



- Step 4** Click **Yes** to delete the selected profile or click **No** to close the window without deleting the profile.
- Step 5** When a profile is deleted it disappears from the list of RFC1483 IRB Profiles in the RFC1483 IRB Service Profile Configuration window.



## Creating Service Profiles for an IP Uplink (for PTA-MD and RBE Subscribers) Service

Service profiles define configuration parameters for the uplink from the Cisco 6400 UAC to the service provider.

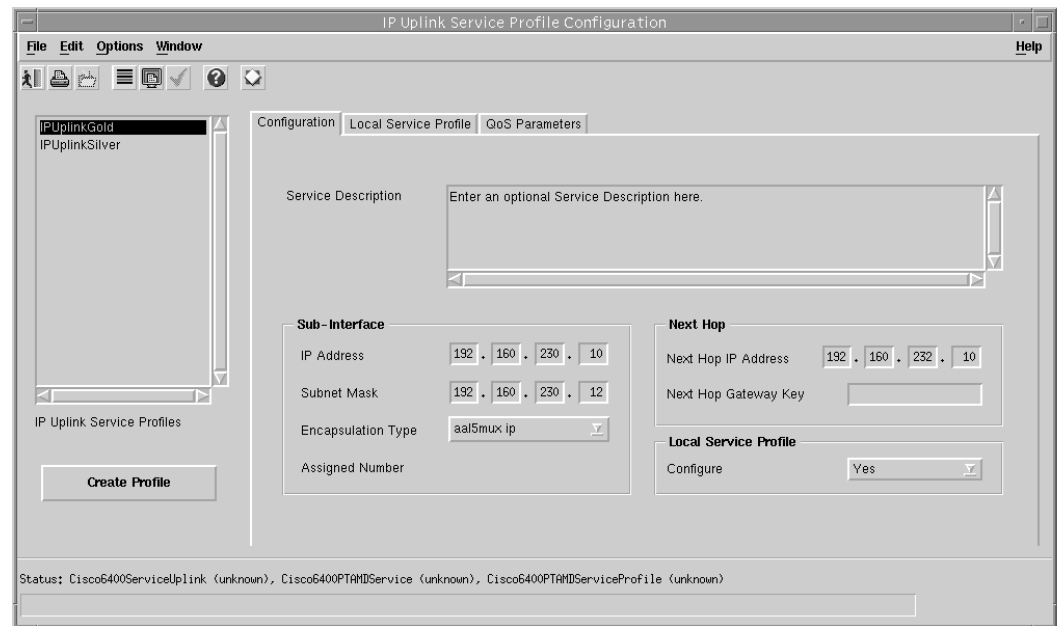
You can set up profiles and apply them or, alternatively, you can set up and apply a profile with some of the parameters set and then configure the remaining parameters manually. The services available on the Cisco 6400 UAC have a number of parameters to configure. It is worth setting up a number of different service profiles with at least some of the values complete (that can be applied later) to save time.

To create an IP Uplink service profile, follow these steps:

- Step 1** Select the **Cisco 6400 UAC, Profiles, Configure IP Uplink Profiles** option from a Site, Shelf, Chassis, or service instance object using the **MapViewer** application.

The IP Uplink Service Profile Configuration window appears (see Figure 9-34) with the Configuration tab displayed.

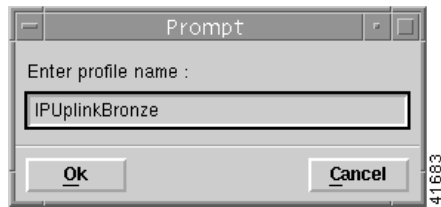
*Figure 9-34 IP Uplink Service Profile Configuration Window (Configuration Tab)*



41672

**Step 2** Select **Create Profile**. A Prompt window appears (see Figure 9-35).

*Figure 9-35 Prompt Window*



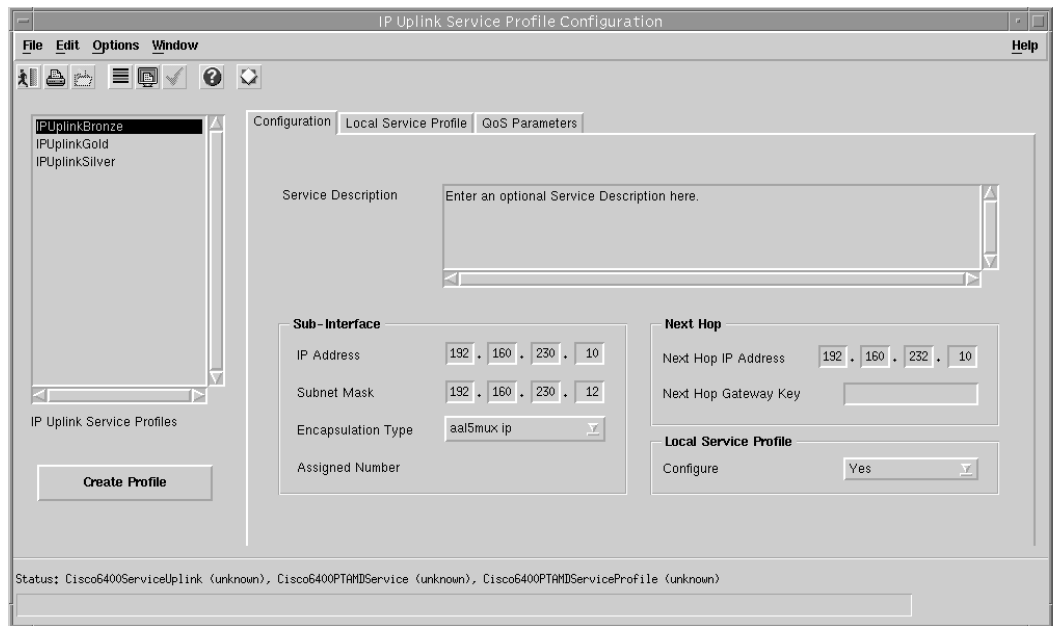
**Step 3** Enter a name for the profile in the **Enter profile name** data entry box. IP Uplink Bronze was entered in the example shown in Figure 9-35.



**Note** Each service profile must have a unique name. Do not insert spaces into a service profile name.

The new profile name appears in the **IP Uplink Service Profiles** list on the left side of the window (see Figure 9-36).

*Figure 9-36 IP Uplink Service Profile Configuration Window (Configuration Tab)*



**Step 4** Configure the parameters displayed in the Configuration tab (shown in Figure 9-34), as required. The Configure option (in the Local Service Profile panel on the Configuration tab) must be set to Yes to allow you to configure the parameters displayed in the Local Service Profile tab.



**Note** You can apply an existing profile to a new profile to save time when configuring new profiles. Select the **Apply Profile** option from the **Edit** menu and then select the existing profile you wish to apply from the profiles listed. The configuration settings are copied from the existing profile to the new profile. The settings copied appear in blue.



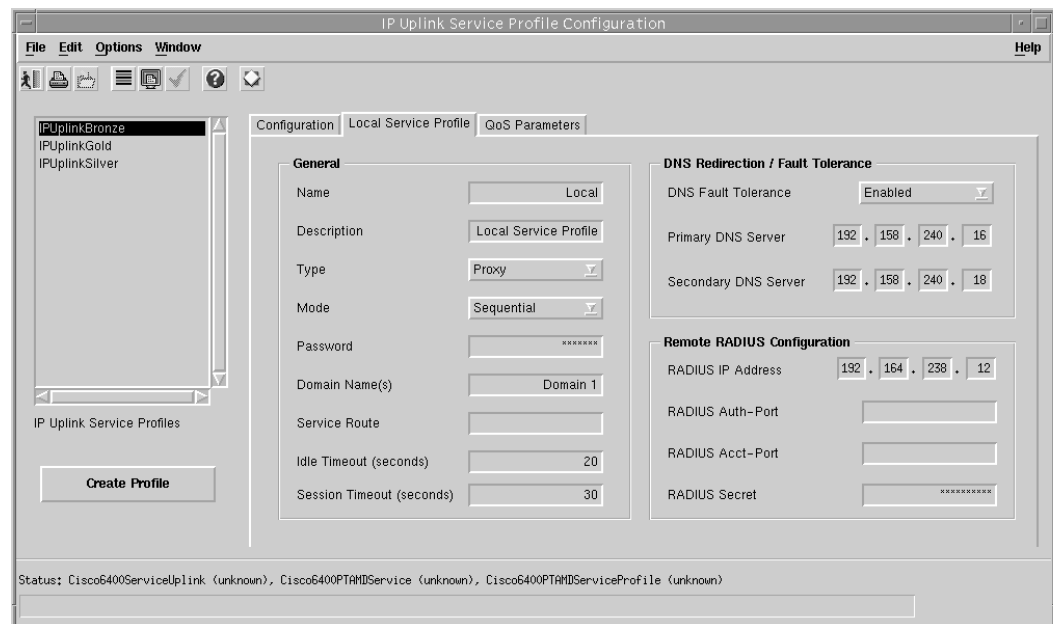
**Note** Select the **Copy** and **Copy Page Configuration** options in the **Edit** menu to cut and paste between different profiles. This is useful when you wish to copy profile information from one to the next.

**Step 5** Select the **Local Service Profile** tab (when applicable).



**Note** The Configure option (in the Local Service Profile panel on the Configuration tab) must be set to Yes to allow you to configure the parameters displayed in the Local Service Profile tab.

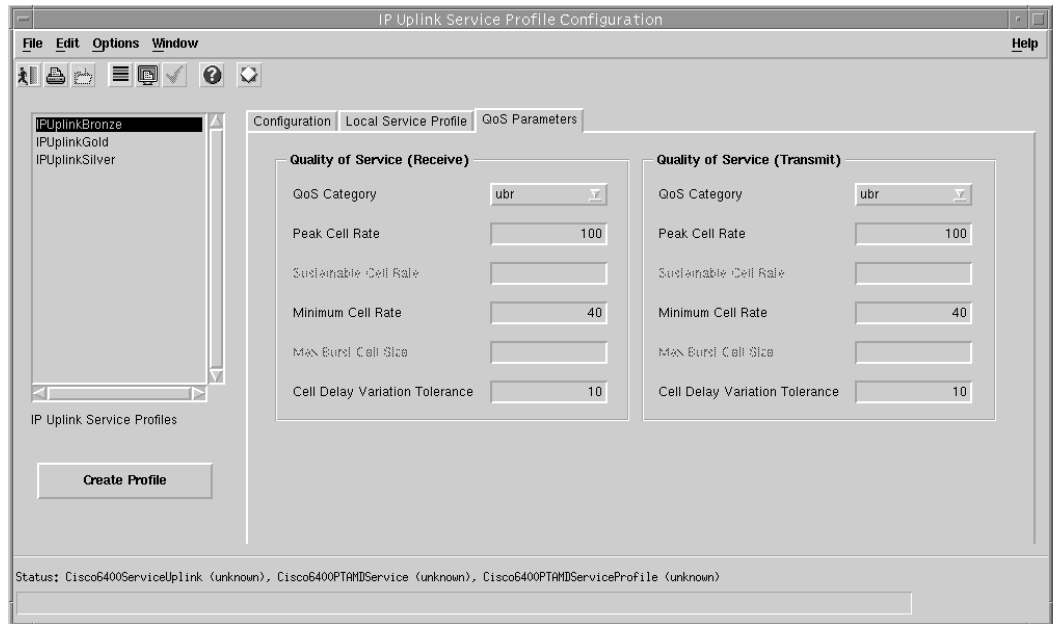
*Figure 9-37 IP Uplink Service Profile Configuration Window (Local Service Profile Tab)*



See the “Local Service Profile Tab” section on page 10-18 for details of the parameters displayed.

- Step 6** Configure the General, DNS Redirection / Fault Tolerance, and the Remote RADIUS Configuration parameters.
- Step 7** Select the QoS Parameters tab.

*Figure 9-38 IP Uplink Service Profile Configuration Window (QoS Parameters Tab)*



- Step 8** Configure the Quality of Service (Receive) and Quality of Service (Transmit) parameters, as required.
- Step 9** Select **Save** from the **File** menu to save the parameters you have selected for your service profile.
- Step 10** Select **Close** from the **File** menu to close the window.

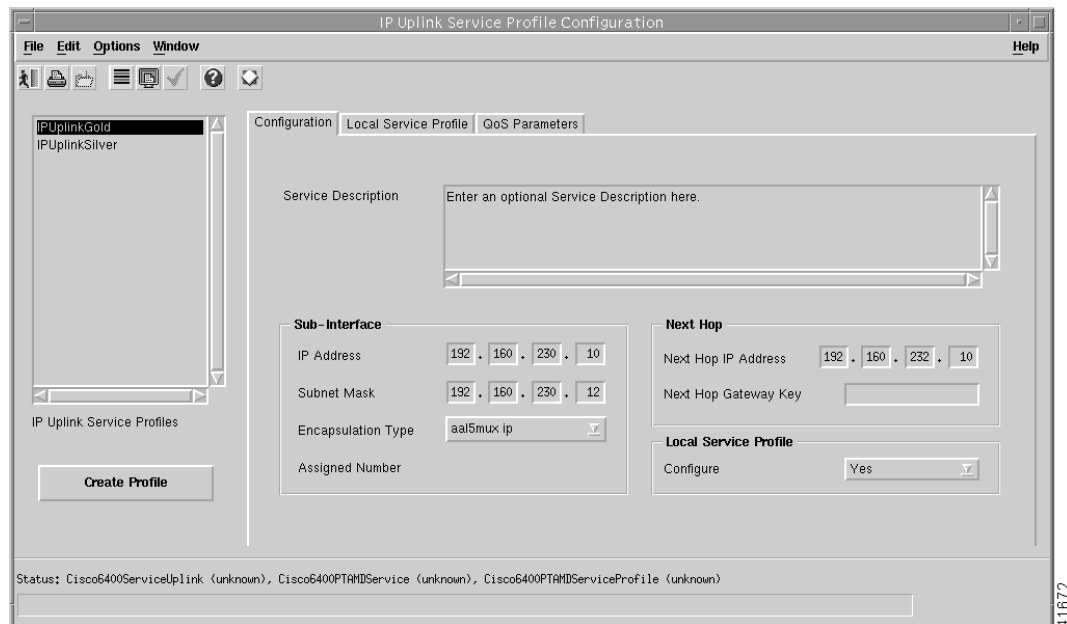
## Editing an Existing IP Uplink Service Profile

To edit an existing IP Uplink service profile, follow these steps:

- Step 1** Select the **Cisco 6400 UAC, Profiles, Configure IP Uplink Profiles** option from a Site, Shelf, Chassis, or service instance object in the Map Viewer window.

The IP Uplink Service Profile Configuration window appears with the Configuration tab displayed (see Figure 9-39).

*Figure 9-39 IP Uplink Service Profile Configuration Window (Configuration Tab)*



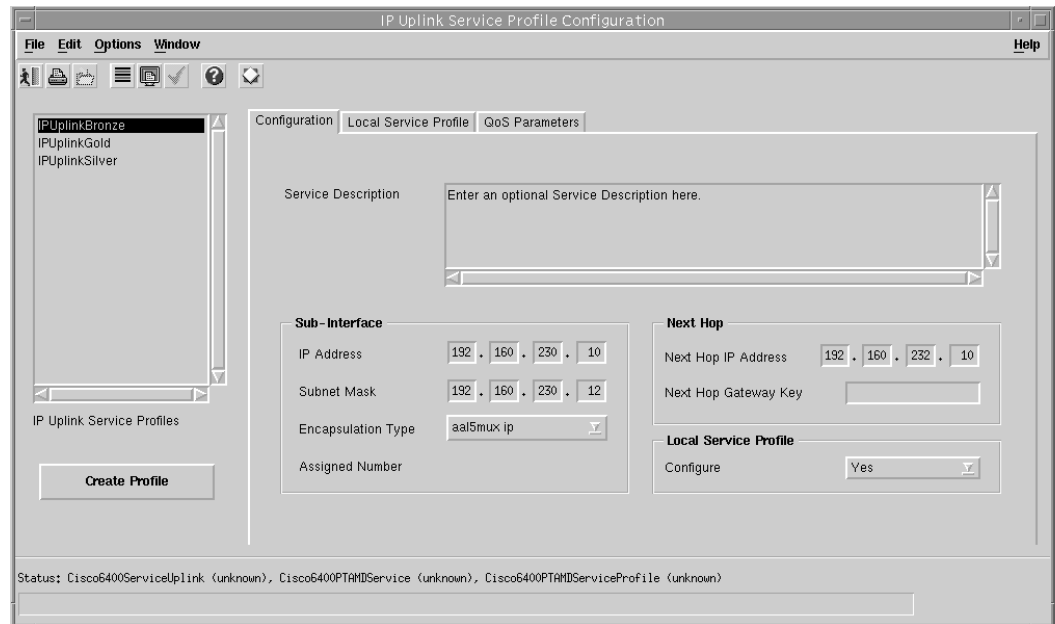
- Step 2** Select the profile you wish to edit from the list of profiles displayed in the IP Uplink Service Profiles list on the left side of the window.
- Step 3** Configure the parameters displayed in the Configuration, Local Service Profile, and QoS Parameters tabs as required.
- Step 4** Select **Save** from the **File** menu to save the configuration.
- Step 5** Select **Close** from the **File** menu to close the window and save the changes made.

## Deleting an Existing IP Uplink Service Profile

To delete an existing IP Uplink service profile, follow these steps:

- Step 1** Select the **Cisco 6400 UAC, Profiles, Configure IP Uplink Profiles** option from a Site, Shelf, Chassis, or service instance object in the Map Viewer window. The IP Uplink Service Configuration Profile window appears.

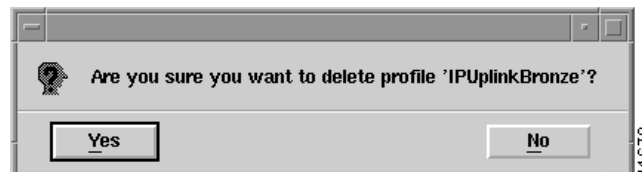
*Figure 9-40 IP Uplink Service Profile Configuration Window (Configuration Tab)*



- Step 2** Select the existing service profile (displayed in the IP Uplink Service Profiles list) that you wish to delete.
- Step 3** Select the **Delete Profile** option from the **Edit** menu. Select the profile you wish to delete from the list displayed.

A Deletion Prompt window appears (see Figure 9-41) for you to confirm that you wish to delete the selected profile.

*Figure 9-41 Deletion Prompt Window*



- Step 4** Click **Yes** to delete the selected profile or click **No** to close the window without deleting the profile.
- Step 5** When a profile is deleted it disappears from the list of IP Uplink Service Profiles in the IP Uplink Service Profiles Configuration window.

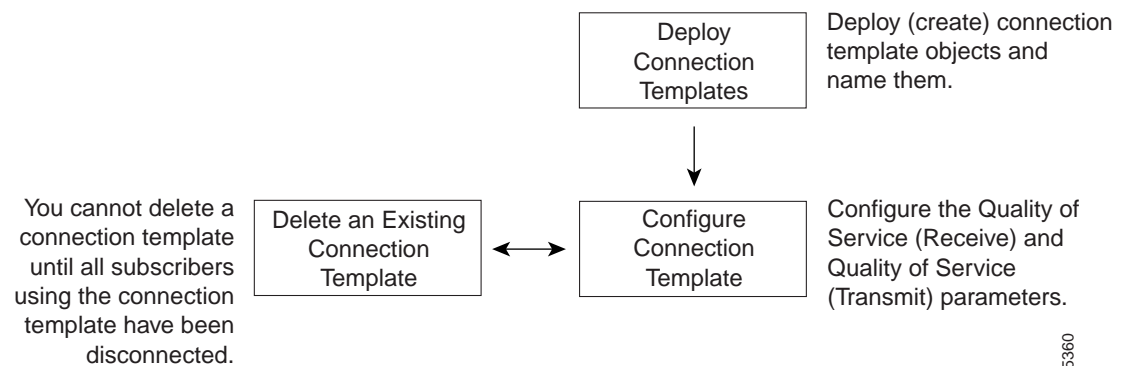
## Connection Templates

Connection Templates are very similar to VC Classes in Cisco IOS. The main difference is that, where a VC class is local to a specific NRP, Connection Templates are available for each Cisco 6400 UAC managed by the Cisco 6400 SCM application. When a parameter in a connection template is altered and applied, this change applies to all connections that use the template. A connection template is basically a “wrapper” that represents several VC classes, one for each NRP.

Connection templates allow you to set the QoS parameters for the connection between the subscriber PVC and the selected NRP. The connection templates are applied later when connecting the subscriber to a service instance. See the “Connecting a Subscriber to a Service Instance” section on page 9-72 for further details on connecting subscribers to a service instance.

Figure 9-42 shown an example workflow for creating and configuring connection templates.

*Figure 9-42 Subscriber Provisioning Work Flow*



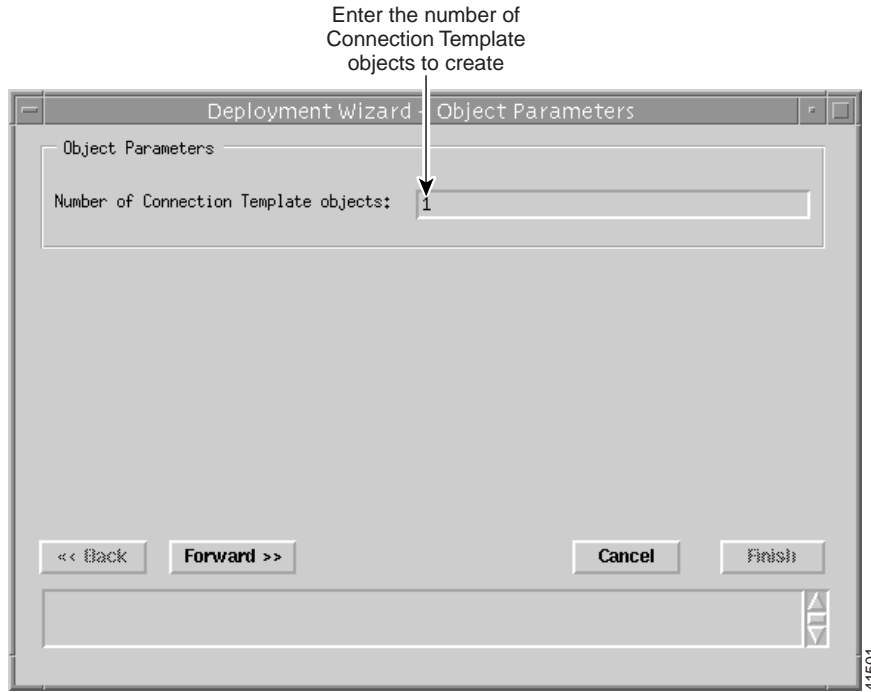
35360

## Deploying Connection Templates

To deploy a Connection Template, follow these steps:

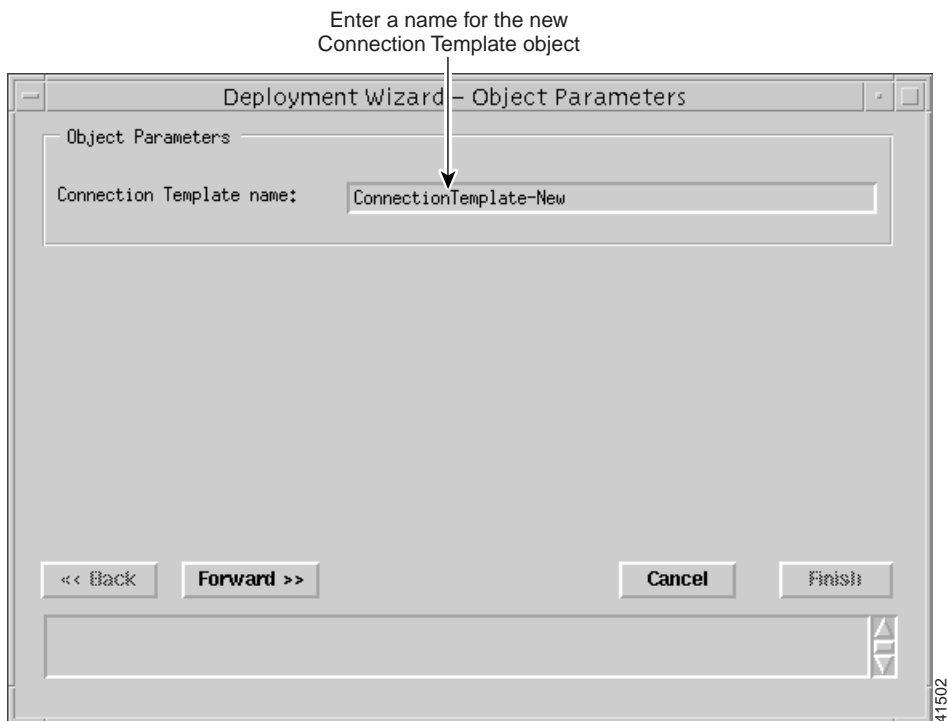
- Step 1** Place the cursor over a relevant object in the a network map, a relevant object in the map view, or by using an object pick list on an open Element Manager window. See Table 9-1 on page 9-2 for information on the objects you can deploy from.
- Step 2** Click and hold down the right mouse button.
- Step 3** Select the **Deployment, Cisco 6400 UAC, Connection Template, Deploy Connection Template** option. The Deployment Wizard - Object Parameters window (see Figure 9-43) appears.

Figure 9-43 Deployment Wizard - Object Parameters Window



- Step 4 Enter the Number of Connection Template objects you wish to deploy.
- Step 5 Click **Forward**.
- Step 6 Enter a name for the new Connection Template in the Object Parameters panel.

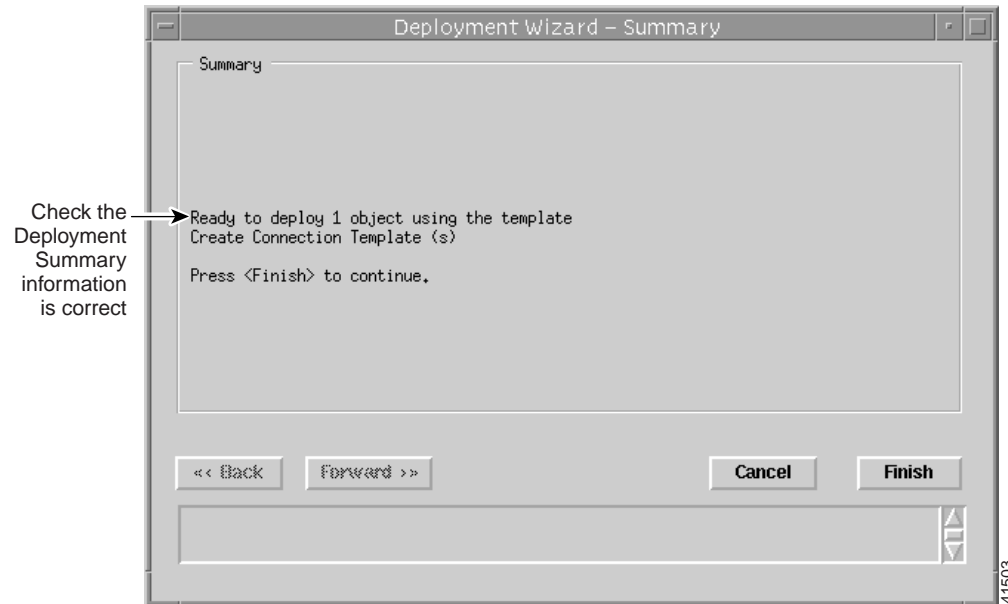
Figure 9-44 Deployment Wizard - Object Parameters Window





- Step 7** Click **Forward**.
- Step 8** Repeat steps 6 and 7 for the Number of Connection Template objects entered in step 4.
- Step 9** The Deployment Summary details appear in the Deployment Wizard - Summary window (see Figure 9-45).

*Figure 9-45 Deployment Wizard - Summary Window*



- Step 10** Check the summary information displayed is correct.
- Step 11** Click **Finish** (when the Deployment Summary information is correct) to complete the deployment.

After deploying a connection template, you should then configure them. Proceed to the “Configuring Connection Templates” section on page 9-33 for further details.

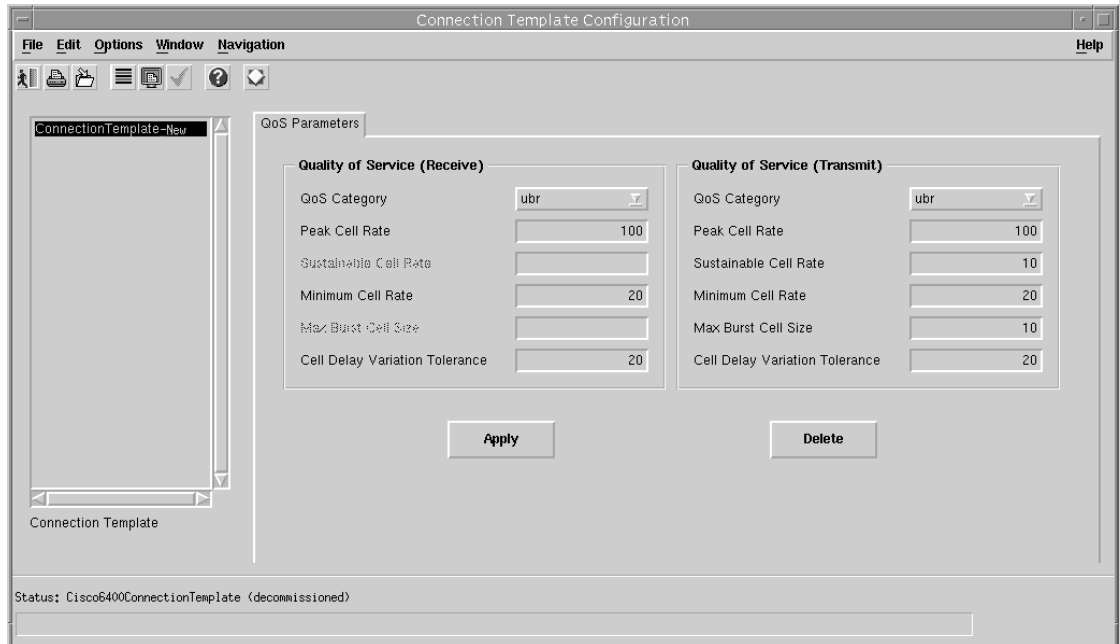
## Configuring Connection Templates

To configure connection templates, follow these steps:

- Step 1** Place the cursor over a relevant object in the a network map, a relevant object in the map view, or use an object pick list on an open Element Manager window. See the Table 9-1 on page 9-2 for information on the objects you can deploy from.
- Step 2** Click and hold down the right mouse button.

- Step 3** Select the **Cisco 6400 UAC, Connection, Connection Template Configuration** option. The Connection Template Configuration window (see Figure 9-46) appears.

*Figure 9-46 Connection Template Configuration Window (QoS Parameters Tab)*



- Step 4** Select a connection template from the Connection Template list displayed.
- Step 5** Configure the Quality of Service (Receive) and Quality of Service (Transmit) parameters, as required. See the “Service/Subscriber Connection Window” section on page 10-60 for further details on the parameters displayed.
- Step 6** Click **Apply** to apply the settings to the selected connection template.



**Note** Connection templates allow you to reconfigure the Quality of Service (Receive) and Quality of Service (Transmit) parameters set for a subscriber without disruption to the service (that is, without having to disconnect a subscriber, change parameters and then reconnect the subscriber).

- Step 7** Select the **Close** option from the File menu to close the Connection Template Configuration window.

## Deleting Connection Templates



---

**Note** Before deleting a connection template you must disconnect any subscribers connected to a service instance using that connection template.

---

To delete connection templates, follow these steps:

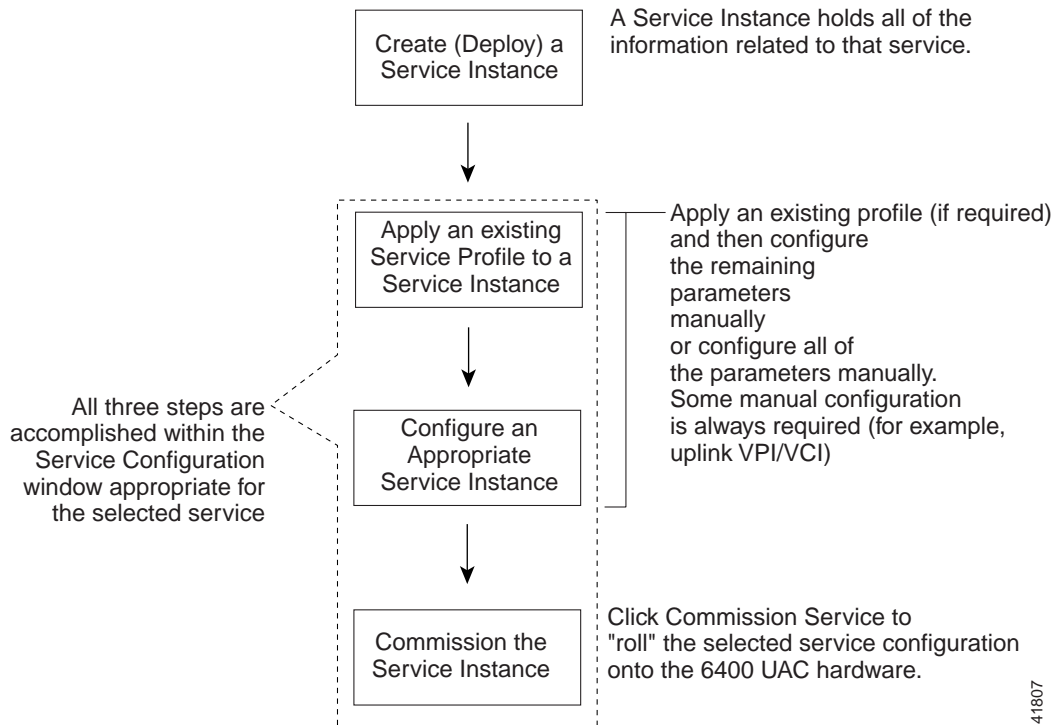
- 
- Step 1** Place the cursor over a relevant object in the a network map, a relevant object in the map view, or an object pick list on an open Element Manager window. See Table 9-1 on page 9-2 for information on the objects you can deploy from.
  - Step 2** Click and hold down the right mouse button.
  - Step 3** Select the **Cisco 6400 UAC, Connection, Connection Template Configuration** option. The Connection Template Configuration window (see Figure 9-46) appears.
  - Step 4** Select a connection template from the Connection Template list displayed.
  - Step 5** Click **Delete** to delete the selected connection template.
  - Step 6** Select **Close** from the **File** menu to close the Connection Template Configuration window.
- 

## Service Provisioning

One of the most important aspect of the Cisco 6400 SCM application is Service Connection Management. The Cisco 6400 UAC contains multiple network elements, an ATM switch, multiple router cards (NRPs), and multiple line cards. Services are deployed across these network elements, a multistage process involving both SNMP and Cisco IOS management commands. The Cisco 6400 SCM application enables point-and-click connection of end subscribers to 6400-based services with all of the underlying Cisco IOS and SNMP operation hidden.

The Cisco 6400 SCM software is designed to help simplify Cisco 6400 UAC service configuration. A typical work flow is described in Figure 9-47.

Figure 9-47 Setting Up Services on the Cisco 6400 UAC

**Note**

The "Configuring and Commissioning a Service Instance" section on page 9-40 is the only section that involves direct configuration of the Cisco 6400 UAC hardware.

## Creating a Service Instance

A service instance is an object that holds all the information related to that service. A service instance object must be created (deployed) before the service instance can be configured.

This section includes an example that describes how to create a service instance for an ATM Service. The procedure for creating a service instance for any other service types is very similar to that for the ATM Service.

To create a service instance, follow these steps:

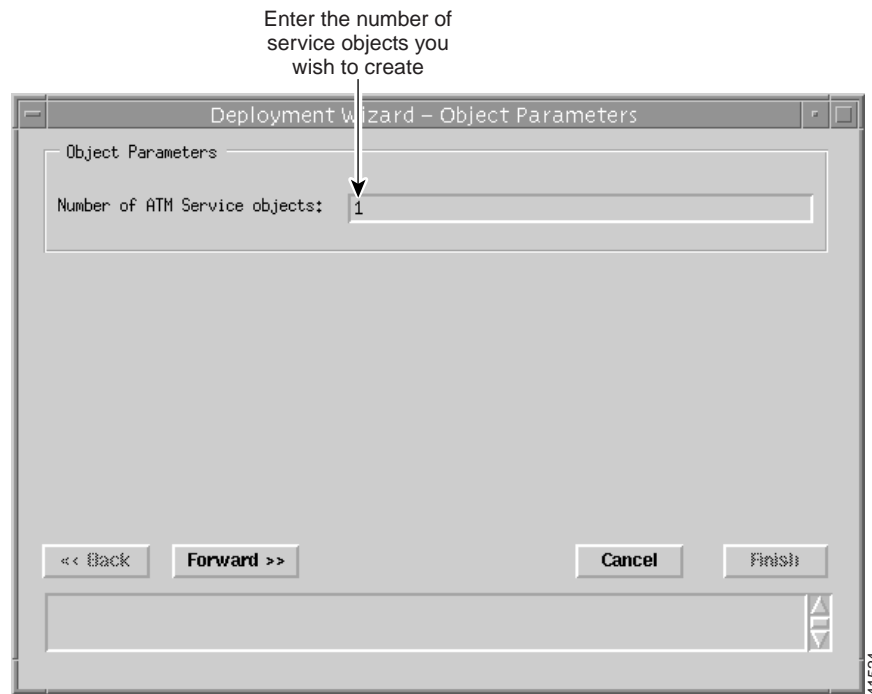
- Step 1** Select the **Cisco 6400 UAC, Service, Deploy, Appropriate Service** option from a selected chassis.

**Note**

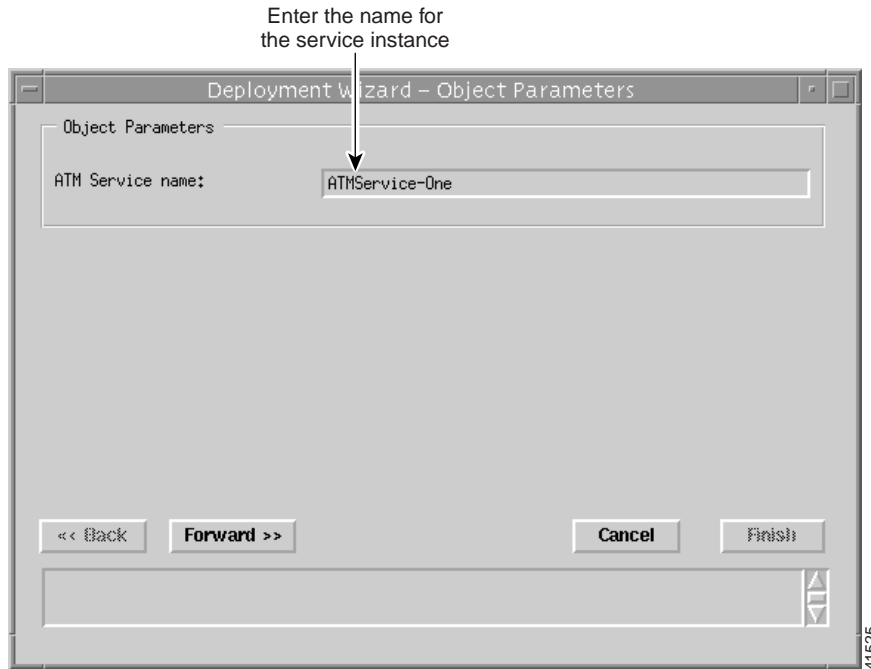
Where the *Appropriate Service* is the type of service instance you wish to create (that is, ATM, PPPoA-SD, L2TP, RFC1483 Bridging, RFC1483 IRB, IP Uplink, or RFC1483 Routing).

The Deployment Wizard Object Parameters (1 of 2) window appears (see Figure 9-48).

*Figure 9-48 Deployment Wizard - Object Parameters (1 of 2) Window*



- Step 2** Enter the **Number of Service objects** to create. A single ATM Service object was entered in the example shown in Figure 9-48.
- Step 3** Select **Forward**. The Deployment Wizard Object Parameters (2 of 2) window appears (see Figure 9-49).

*Figure 9-49 Deployment Wizard - Object Parameters (2 of 2)*

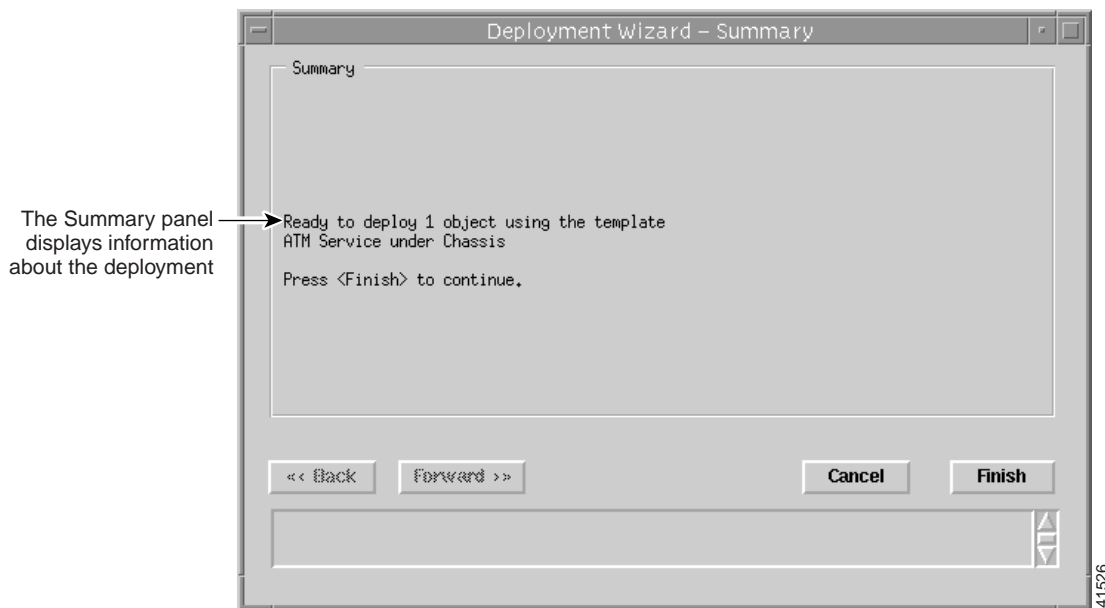
- Step 4** Enter a **Service Instance Name**. ATM Service- One was entered in the example shown in Figure 9-49.
- Step 5** Select **Forward**.



**Note** Repeat steps 4 and 5 for the **Number of Service Instances** entered in step 2, when required.

**Step 6** Click **Forward**. The **Deployment Wizard Summary** window appears (see Figure 9-50).

*Figure 9-50 Deployment Wizard - Summary*

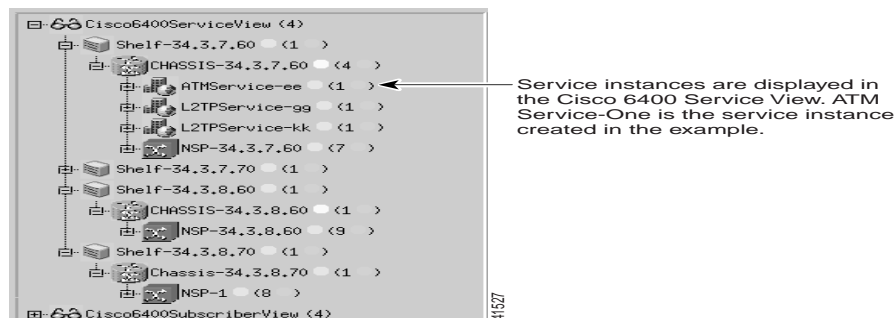


Summary information displays in the Summary panel.

- Step 7** Check the Summary information is correct.
- Step 8** Click **Finish** (when the **Deployment Summary** information is correct) to create the new Service Instance objects.
- Step 9** Proceed to the “Configuring and Commissioning a Service Instance” section on page 9-40.

The new service instances created now displays in the Cisco 6400 Service View at the left side of the Map Viewer window. You will have to refresh the view. Figure 9-51 shows an example of the ATM Service-ATM Service Instance One service instance created in the previous example.

*Figure 9-51 Service Instances Displayed in the Cisco 6400 Service View*



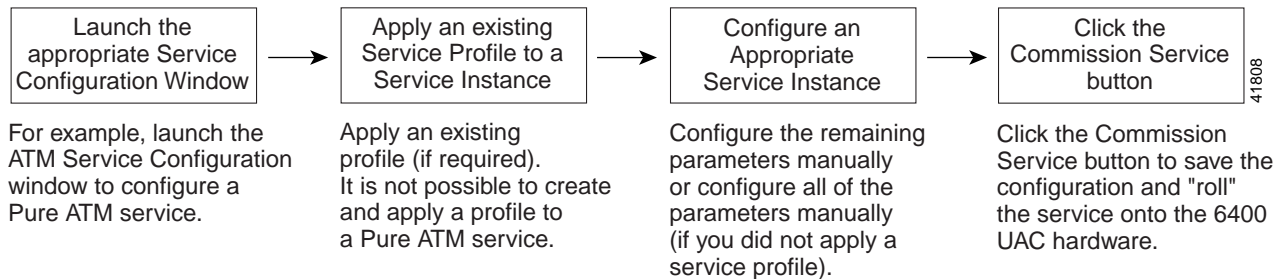
## Configuring and Commissioning a Service Instance

After you create the service instance object, you should configure and then commission the service instance from the appropriate Service Configuration window. The service instance object can be configured in two ways:

- By applying an appropriate service profile and then manually configuring each of the remaining parameter in that service instance.
- By manually configuring each parameter in the service instance.

This section describes how launch the appropriate Service Configuration window, apply a service profile (if required), configure the remaining parameters, and then commission the service instance for each of the available Cisco 6400 SCM services. Figure 9-52 displays a typical workflow for configuring and then commissioning a service instance.

**Figure 9-52** *Configuring and Commissioning a Service Instance*





## Configuring and Commissioning a Pure ATM Service Instance

To configure and commission a Pure ATM switching service instance, follow these steps:

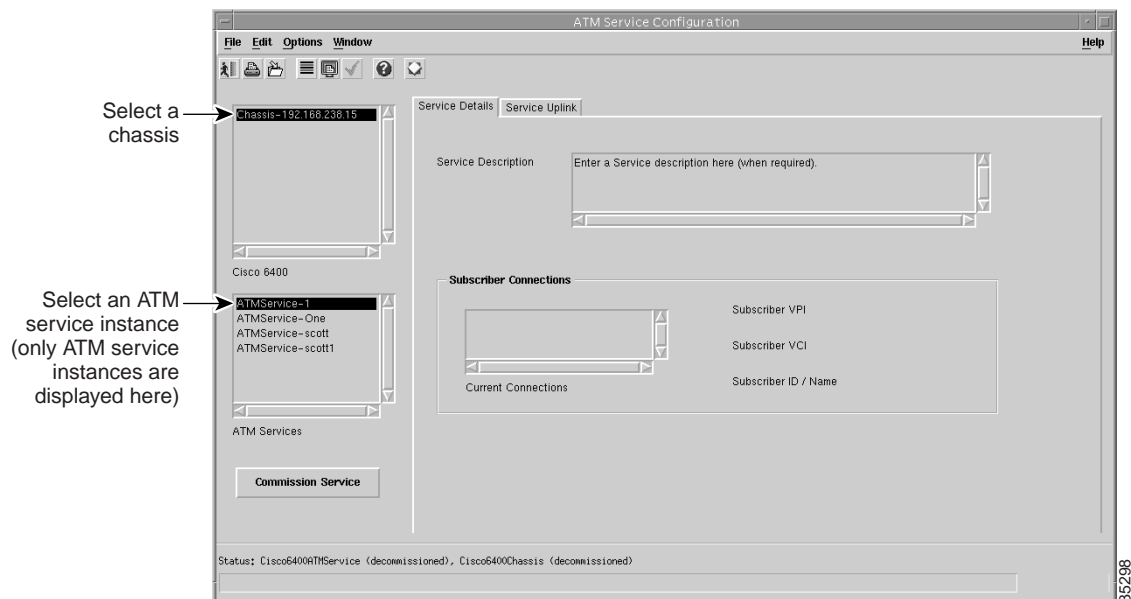
- Step 1** Select the **Cisco 6400 UAC, Service, Configure ATM Service** option from the egress ATM line card object in MapViewer.



**Note** You cannot apply a profile to the pure ATM switching service.

The ATM Service Configuration window appears (see Figure 9-53). See the “ATM Service Configuration Window” section on page 10-24 for further details on the parameters displayed.

*Figure 9-53 ATM Service Configuration Window (Service Details Tab)*



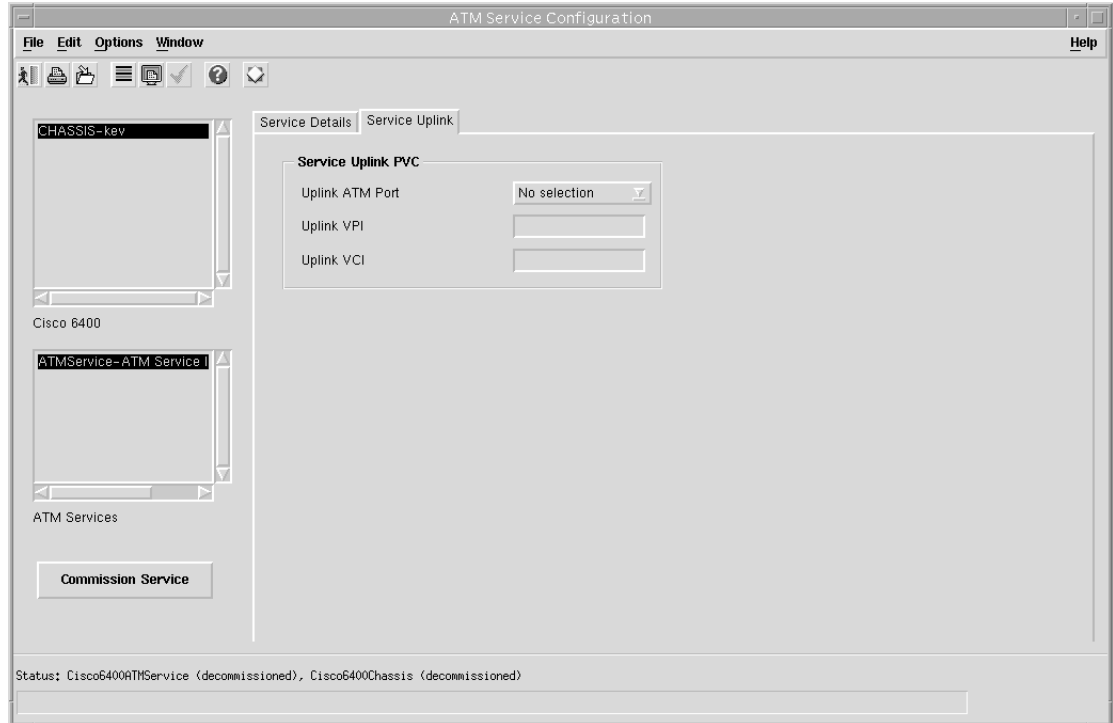
- Step 2** Select the appropriate **Cisco 6400** chassis and **ATM Service** instance from the lists displayed at the left side of the window.

Only the ATM service instance objects (for the selected chassis) are displayed in the ATM Services list. Service instances for other service types are listed in their appropriate Service Configuration windows. For example, L2TP service instance objects are displayed in the L2TP Configuration window. The ATM Services list is empty when no ATM Service instances have been created. See the “Creating a Service Instance” section on page 9-36 for details on how to create a service instance.

### Configuring the ATM Service Parameters

- Step 3** Enter a Service Description (when required).
- Step 4** Select a connection from the ATM Connection list.
- Step 5** Enter Subscriber VPI, Subscriber VCI and Subscriber Name in the Subscriber Connections panel, as required.
- Step 6** Select the **Service Uplink** tab.

Figure 9-54 ATM Service Configuration Window (Service Uplink Tab)



- Step 7** Enter details into the parameters displayed in the Service Uplink PVC panel, as required. See the “Service Uplink Tab” section on page 10-25 for further details on the parameters displayed.

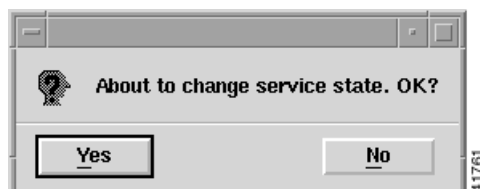
### Commissioning the Pure ATM Service Instance



**Note** This is the first stage at which you actually “roll” the selected service configuration onto the Cisco 6400 UAC hardware.

- Step 8** Click **Commission Service** to save the configuration information you have entered and roll the service onto the Cisco 6400 UAC. A pop up window appears for you to confirm that you wish to commission the selected service.

Figure 9-55 About to Change Service State Confirmation Window



- Step 9** Select **Yes** to commission the service (or **No** to return to the ATM Service Instance Configuration window without commissioning the ATM service). An Action Report window appears. The Action Report window details the Cisco IOS commands executed when the service is commissioned. Invalid Cisco IOS commands result in a failure to commission the service.

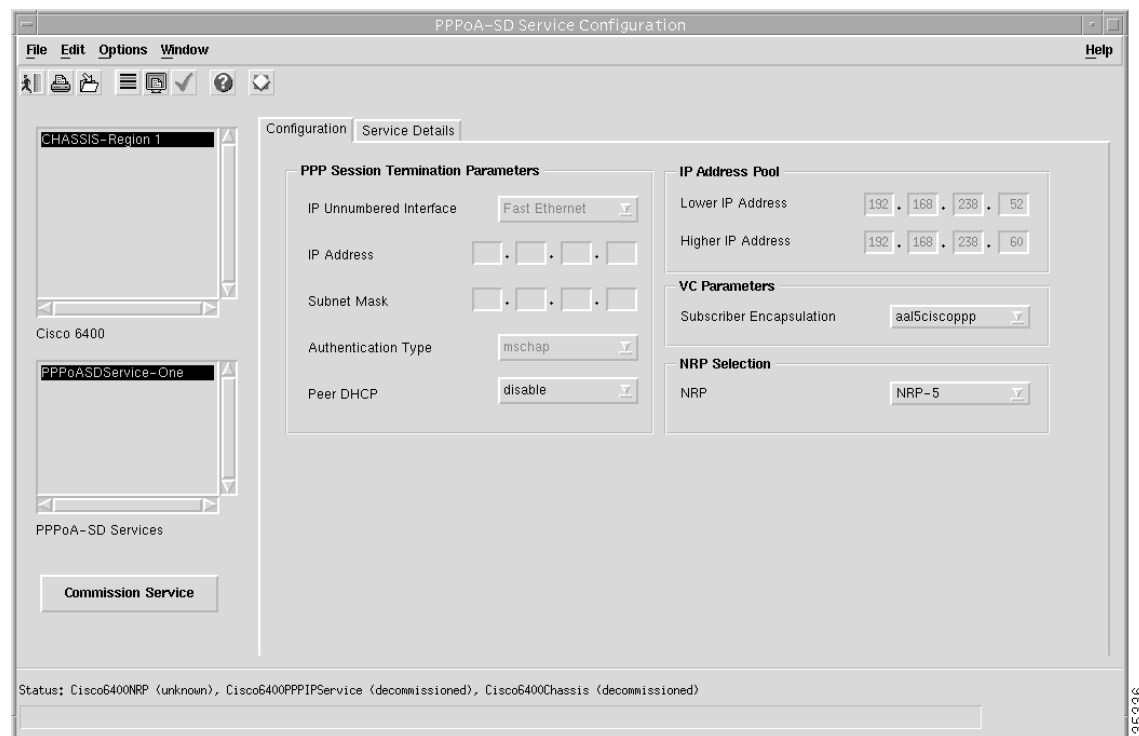
- Step 10 Check the details in the Action Report window to ensure that the service was commissioned successfully.
- Step 11 Select **Save** to save the Action Report, if required.
- Step 12 Select **Close** to close the Action Report window and return to the Service Instance Configuration window.
- Step 13 Select **Close** from the **File** menu to close the Service Instance Configuration window.

## Configuring and Commissioning a PPPoA-SD Service Instance

To configure and commission a PPPoA-SD service instance, follow these steps:

- Step 1 Select the **Cisco 6400 UAC, Service, Configure PPPoA-SD Service** option from a Site, Shelf, Chassis, or service instance object. The PPPoA-SD Service Configuration window appears (see Figure 9-56).

Figure 9-56 PPPoA-SD Service Configuration Window (PPPoA-SD Configuration Tab)



- Step 2 Select the appropriate **Cisco 6400** and **PPPoA-SD Service** instance from the lists displayed on the left side of the window.

Only the PPPoA-SD service instance objects (for the selected chassis) are displayed in the PPPoA-SD Services list. Service instances for other service types are listed in their appropriate Service Configuration windows. For example, L2TP service instance objects are displayed in the L2TP

Configuration window. The PPPoA-SD Services list is empty when no PPPoA-SD instances have been created. See the “Creating a Service Instance” section on page 9-36 for details on how to create a service instance.



**Note** Proceed to the “Configuring the PPPoA-SD Service Parameters” section on page 9-44 if you are not applying a service profile.

### Applying a PPPoA-SD Service Profile

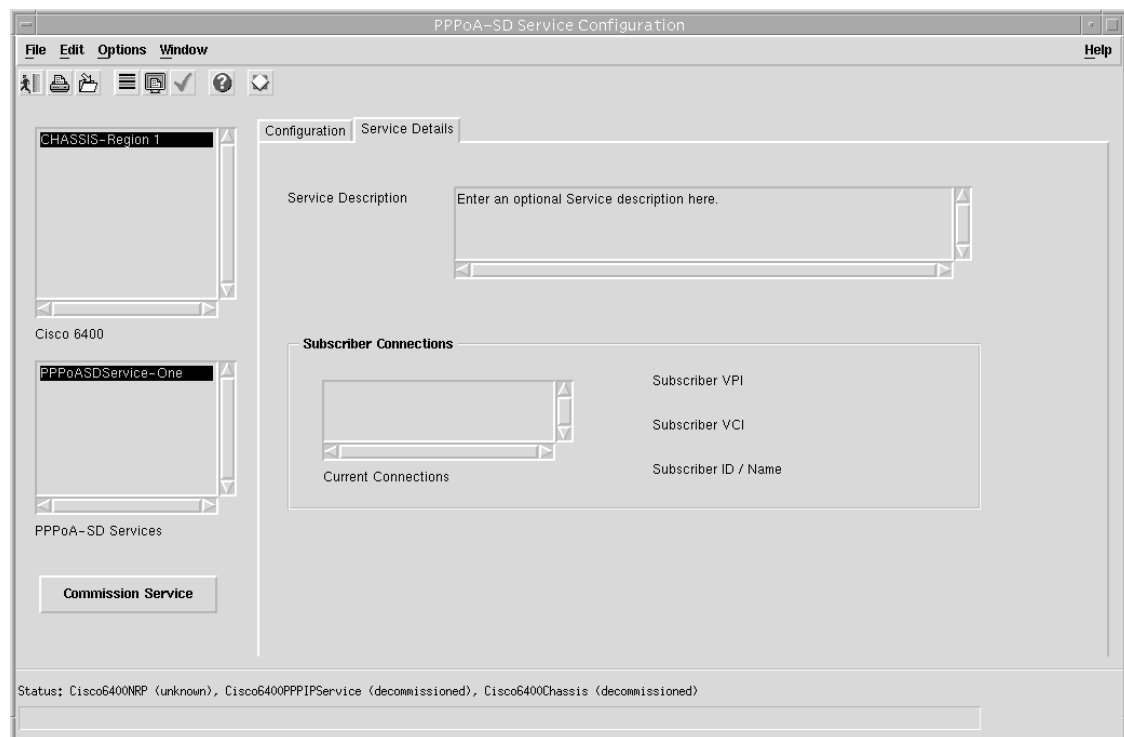
- Step 3** Select **Apply Profile** from the **Edit** menu.
- Step 4** Select the appropriate profile from the list of profiles displayed. The profile parameters are copied to the appropriate service instance parameters in the PPPoA-SD Service Configuration window and appear in blue.

### Configuring the PPPoA-SD Service Parameters

See the “PPPoA-SD Service Configuration Window” section on page 10-26 for further details on the parameters displayed.

- Step 5** Configure the parameters displayed in the Virtual Template Parameters, IP Address Pool, and VC Parameters panels, as required.
- Step 6** Select the **Service Details** tab.

*Figure 9-57 PPPoA-SD Service Configuration Window (Service Details Tab)*



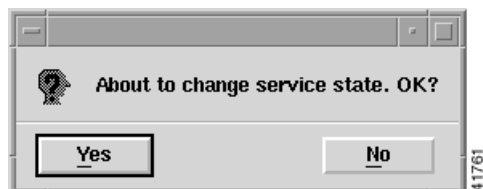
See the “PPPoA-SD Service Configuration Window” section on page 10-26 for further details on the parameters displayed.

- Step 7 Enter a **Service Description**, if required.
- Step 8 Select a connection from the Current Connection list and configure the values in the Subscriber Connections panel, as required.

### Commissioning the PPPoA-SD Service

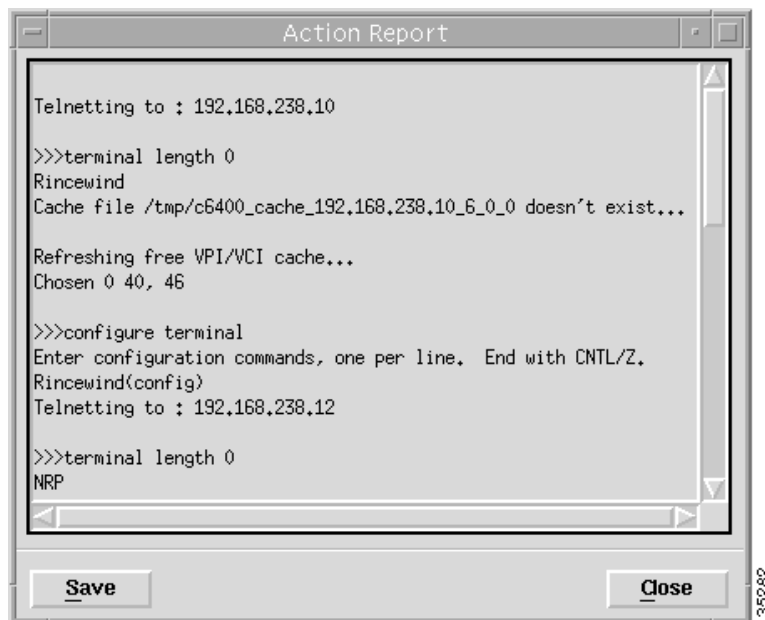
- Step 9 Click **Commission Service** to roll the service onto the selected Cisco 6400 UAC. A pop up window appears for you to confirm that you wish to commission the selected service.

*Figure 9-58 About to Change Service State Confirmation Window*



- Step 10 Select **Yes** to commission the service (or **No** to return to the Service Instance Configuration window). The Action Report window appears.

*Figure 9-59 Action Report Window*



The Action Report window details the Cisco IOS commands executed when the service is commissioned. Invalid Cisco IOS commands result in a failure to commission the service.

- Step 11 Check the details in the Action Report window to ensure that the service was commissioned successfully.

**Caution**

The Cisco 6400 SCM will roll-back configuration changes applied if an error is detected in the execution of the Cisco IOS command sequence with your selected parameters. This insures that the Cisco 6400 UAC remains in a consistent state, even when errors are made entering parameters.

- Step 12** Select **Save** to save the Action Report, if required.
- Step 13** Select **Close** to close the Action Report window and return to the Service Instance Configuration window.
- Step 14** Select **Save** from the **File** menu to save the parameters configured.
- Step 15** Select **Close** from the **File** menu to close the PPPoA-SD Service Configuration window.

**Note**

The PPPoA-SD Service requires additional configuration. Proceed to the “Additional IOS Configuration For the PPPoA-SD Service” section on page 9-46 for further details.

### Additional IOS Configuration For the PPPoA-SD Service

For the PPPoA-SD service to pass traffic to a designated trunk port, Cisco IOS must be used (to route traffic via layer 3 to a destination network). One way of doing this is to create a PVC on the NRP to support the routing of traffic to the trunk port and then create the required entries in the IP Routing Table.

Execute (on the selected NRP) the following Cisco IOS commands to configure a PPPoA-SD service to pass traffic to a designated trunk port:

```
NRP(config)#interface atm0/0/0.<Sub-Interface Number> point-to-point
NRP(config-if)#ip address <IP Address> <Subnet Mask>
NRP(config-if)#pvc <NRP-Interface-vpi>/<NRP-Interface-vci>
NRP(config-if-vc)#class <vc-class-name>
NRP(config-if-vc)#protocol ip <Dest IP Address> no broadcast
```

where,

<Sub-Interface Number> is a number for the sub-interface

<IP Address> is the IP Address of the sub-interface

<Subnet Mask> is the Subnet Mask of the sub-interface

<NRP-Interface-vpi> is the same VPI value as used when a PVC is created on the NSP

<NRP-Interface-vci> is the same VPI value as used when a PVC is created on the NSP

<Dest IP Address> is the destination IP Address mapped to the PVC

<vc-class-name> is the name of the vc-class created previously

Now create the required entries in the IP Routing Table:

```
NRP(config)#ip route <Dest IP Address> 255.255.255.255 atm0/0/0.<Sub-Interface Number>
```

where,

<Dest IP Address> is as configured previously

<Sub-Interface Number> is as configured previously.

## Configuring and Commissioning an L2TP Service Instance

To configure and commission an L2TP service instance, follow these steps:

- Step 1** Select the **Cisco 6400 UAC, Service, Configure L2TP Service** option from a Site, Shelf, Chassis, or service instance object. The L2TP Service Configuration window appears (see Figure 9-60).

*Figure 9-60 L2TP Service Configuration Window (PPPoA-SD L2TP Configuration Tab)*

The screenshot shows the 'L2TP Service Configuration' window with the following sections:

- Configuration Tab:**
  - Tunnel Parameters:** Tunnel Number (1), Domain Name, Destination IP Address (192.168.238.12), Authentication Name, Authentication Password, Authentication Type (none).
  - VC Parameters:** Subscriber Encapsulation (aal5ciscopp), Encapsulation Type (aal5snap), PVC IP Address (0.0.0.0).
  - Sub-Interface:** IP Address (192.168.238.10), Subnet Mask (192.168.238.14).
  - NRP Selection:** NRP (No selection).
- Service UpLink Tab:** (Empty)
- Service Details Tab:** (Empty)
- Left Panel:** Lists 'CHASSIS-Region 1', 'Cisco 6400', 'L2TPService-L2TP One', 'L2TPService-L2TP Service', 'L2TPService-scott', and 'L2TP Services'. A 'Commission Service' button is at the bottom.
- Status Bar:** Cisco6400ServiceUplink (decommissioned), Cisco6400L2TPService (decommissioned), Cisco6400Chassis (decommissioned).

See the “Configuration Tab” section on page 10-29 for details on the parameters displayed.

- Step 2** Select the appropriate **Cisco 6400** and **L2TP Service** from the lists displayed on the left side of the window.

Only the L2TP service instance objects (for the selected chassis) are displayed in the L2TP Services list. Service instances for other service types are listed in their appropriate Service Configuration windows. For example, IP Uplink service instance objects are displayed in the IP Uplink Configuration window. The L2TP Services list is empty when no L2TP service instances have been created. See the “Creating a Service Instance” section on page 9-36 for details on how to create a service instance.



**Note** Proceed to the “Configuring the L2TP Service Parameters” section on page 9-48 when you are not applying a service profile.

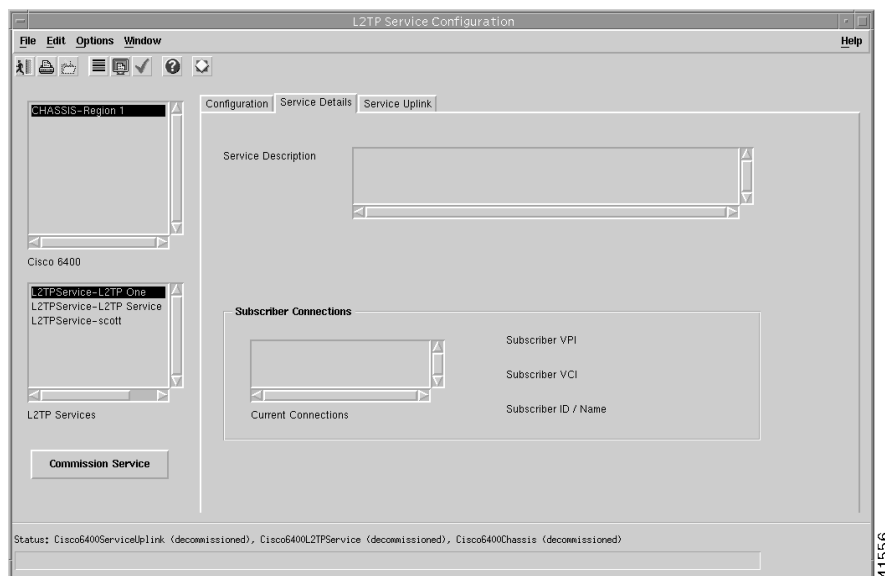
## Applying an L2TP Service Profile

- Step 3 Select **Apply Profile** from the **Edit** menu.
- Step 4 Select the appropriate profile from the list of profiles displayed. The profile parameters are copied to the appropriate service instance parameters in the L2TP Service Configuration window and appear in blue.

## Configuring the L2TP Service Parameters

- Step 5 Configure the parameters displayed on the **Configuration** tab, as required.
- Step 6 Select the **Service Details** tab.

Figure 9-61 L2TP Service Configuration Window (Service Details Tab)



See the “Service Details Tab” section on page 10-31 for further details on the parameters displayed.

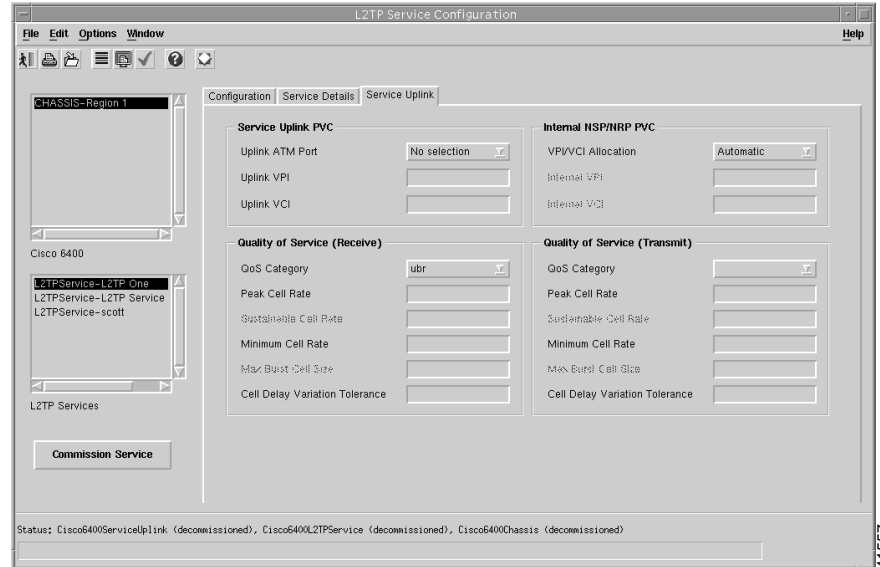
- Step 7 Enter a Service Description in the Service Details panel, if required.
- Step 8 Select **Allow** or **Prevent** over-subscription.

**Over-subscription** is set to **Allow** by default and an unlimited number of subscribers can be connected to the service. Selecting to **Prevent Oversubscription** ensures that the SCM limits the number of subscribers connected such that the sum of the subscriber’s peak cell rates never exceeds the peak cell rate reserved for the service on the uplink. Over-subscription functionality is not applicable to the PPPoA-SD and ATM services.

- Step 9 Select a connection from the Current Connection list and configure the values in the Subscriber Connections panel, as required.
- Step 10 Select the **Service Uplink** tab.



Figure 9-62 L2TP Service Configuration Window (Service Uplink Tab)



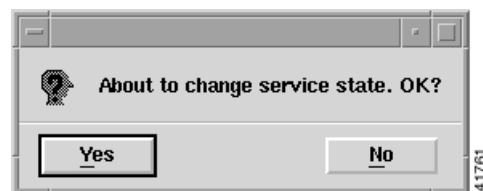
See the “Service Uplink Tab” section on page 10-32 for further details on the parameters displayed.

- Step 11** Configure the parameters displayed in the Service Uplink PCV, Quality of Service (Receive), Internal NSP, NRP PVC and Quality of Service (Transmit), as required.

### Commissioning the L2TP Service

- Step 12** Click **Commission Service** to roll the service onto the Cisco 6400 UAC.  
A pop up window appears for you to confirm that you wish to commission the selected service.

Figure 9-63 About to Change Service State Confirmation Window



- Step 13** Select **Yes** to commission the service (or **No** to return to the L2TP Service Configuration window). The Action Report window appears.

Figure 9-64 Action Report Window



The Action Report window details the Cisco IOS commands executed when the service is commissioned. Invalid Cisco IOS commands result in a failure to commission the service.

- Step 14** Check the details in the Action Report window to ensure that the service was commissioned successfully.



**Caution**

The Cisco 6400 SCM will roll-back configuration changes applied if an error is detected in the execution of the Cisco IOS command sequence with your selected parameters. This insures that the Cisco 6400 UAC remains in a consistent state, even when errors are made entering parameters.

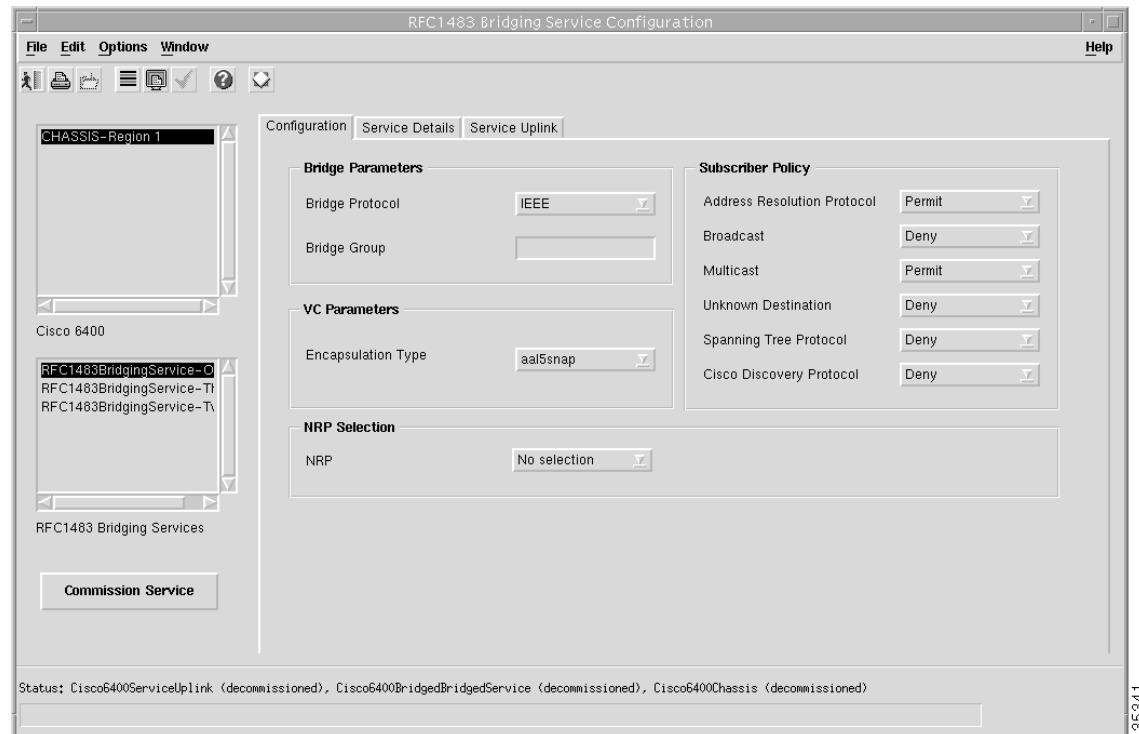
- Step 15** Select **Save** to save the Action Report, if required.
- Step 16** Select **Close** to close the Action Report window and return to the Service Instance Configuration window.
- Step 17** Select **Save** from the **File** menu to save the parameters configured.
- Step 18** Select **Close** from the **File** menu to close the L2TP Service Configuration window.

## Configuring and Commissioning an RFC1483 Bridging Service Instance

To configure and commission an RFC1483 Bridging service instance, follow these steps:

- Step 1** Select the **Cisco 6400 UAC, Service, Configure RFC1483 Bridging Service** option from a Site, Shelf, Chassis, or service instance object. The RFC1483 Bridging Service Configuration window appears:

*Figure 9-65 RFC1483 Bridging Service Configuration Window (Configuration Tab)*



See the “Configuration Tab” section on page 10-34 for further details on the parameters displayed.

- Step 2** Select the appropriate **Cisco 6400** and **RFC1483 Bridging Service** from the lists displayed on the left side of the window.

Only the RFC1483 Bridging service instance objects (for the selected chassis) are displayed in the RFC1483 Bridging Services list. Service instances for other service types are listed in their appropriate Service Configuration windows. For example, L2TP service instance objects are displayed in the L2TP Configuration window. The RFC1483 Bridging Services list is empty when no RFC1483 Bridging Service instances have been created. See the “Creating a Service Instance” section on page 9-36 for details on how to create a service instance.



**Note** Proceed to the “Configuring the RFC1483 Bridging Service Parameters” section on page 9-52 when you are not applying a service profile.

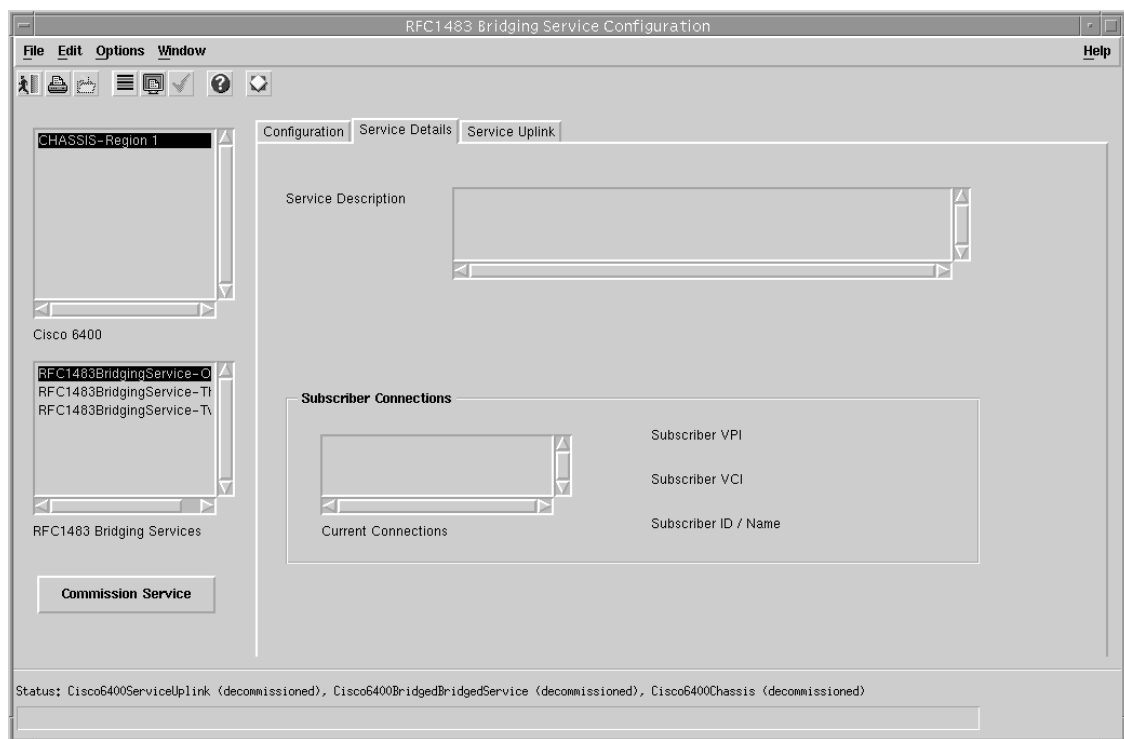
## Applying a RFC1483 Bridging Service Profile

- Step 3 Select **Apply Profile** from the **Edit** menu.
- Step 4 Select the appropriate profile from the list of profiles displayed. The profile parameters are copied to the appropriate service instance parameters in the RFC1483 Bridging Service Configuration window and appear in blue.

## Configuring the RFC1483 Bridging Service Parameters

- Step 5 Configure the parameters displayed in the Bridge Parameters, VC Parameters, and Subscriber Policy panels, as required.
- Step 6 Select the **Service Details** tab.

Figure 9-66 RFC1483 Bridging Service Configuration Window (BR Configuration Tab)



See the “Service Details Tab” section on page 10-35 for further details on the parameters displayed.

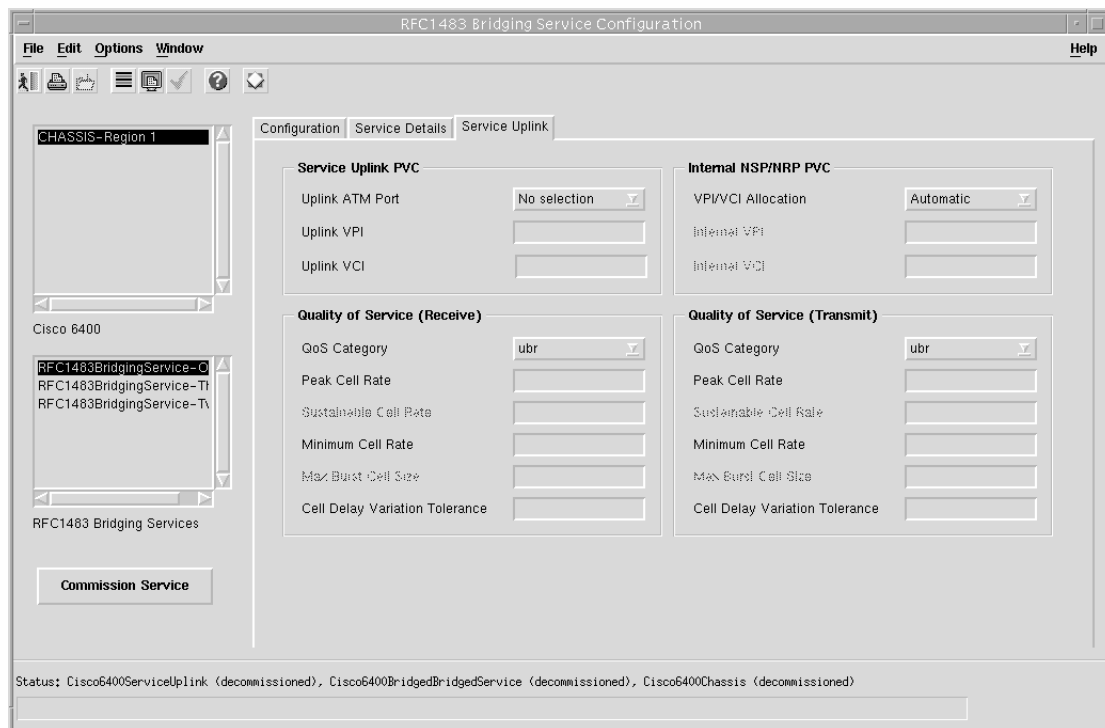
- Step 7 Enter a Service Description in the Service Details panel, if required.
- Step 8 Select **Allow** or **Prevent** oversubscription.

**Oversubscription** is set to **Allow** by default and an unlimited number of subscribers can be connected to the service. Select **Prevent Oversubscription** to ensure the SCM limits the number of subscribers connected such that the sum of the subscriber’s peak cell rates never exceeds the peak cell rate reserved for the service on the uplink. Oversubscription functionality is not applicable to the PPPoA-SD and ATM services.

- Step 9 Select a connection from the Connection list and configure the values in the Subscriber Connections panel, as required.

- Step 10** Configure the parameters displayed in the Subscriber Connections panel.
- Step 11** Select the **Service Uplink** tab.

*Figure 9-67 RFC1483 Bridging Service Configuration Window (Service Uplink Tab)*



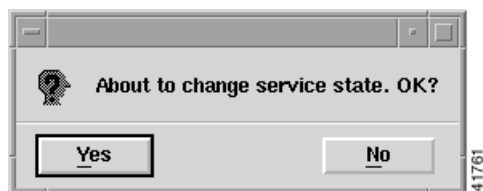
See the “Service Uplink Tab” section on page 10-37 for further details on the parameters displayed.

- Step 12** Configure the parameters displayed in the Service Uplink PCV, Quality of Service (Receive), Internal NSP, NRP PVC, and Quality of Service (Transmit) panels, as required.

### Commissioning the RFC1483 Bridging Service

- Step 13** Click **Commission Service** to roll the service onto the Cisco 6400 UAC.
- A pop up window appears for you to confirm that you wish to commission the selected service.

*Figure 9-68 About to Change Service State Confirmation Window*



- Step 14** Select **Yes** to commission the service (or **No** to return to the RFC1483 Bridging Service Configuration window). The Action Report window appears.

*Figure 9-69 Action Report Window*



The Action Report window details the Cisco IOS commands executed when the service is commissioned. Invalid Cisco IOS commands result in a failure to commission the service.

- Step 15** Check the details in the Action Report window to ensure that the service was commissioned successfully.



**Caution**

The Cisco 6400 SCM will roll-back configuration changes applied if an error is detected in the execution of the Cisco IOS command sequence with your selected parameters. This insures that the Cisco 6400 UAC remains in a consistent state, even when errors are made entering parameters.

- Step 16** Select **Save** to save the Action Report, if required.
- Step 17** Select **Close** to close the Action Report window and return to the Service Instance Configuration window.
- Step 18** Select **Save** from the **File** menu to save the parameters configured.  
Select **Close** from the **File** menu to close the RFC1483 Bridging Service Configuration window.

## Configuring and Commissioning a RFC1483 IRB Service Instance

To configure and commission an RFC1483 IRB service instance, follow these steps:

- Step 1** Select the **Cisco 6400 UAC, Service, Configure RFC1483 IRB Service** option from a Site, Shelf, Chassis, or service instance object.

The RFC1483 IRB Service Configuration window appears.

*Figure 9-70 RFC1483 IRB Service Configuration Window (Configuration Tab)*

See the “Configuration Tab” section on page 10-39 for further details on the parameters displayed.

- Step 2** Select the appropriate **Cisco 6400** and **RFC1483 IRB Service Instance** from the lists displayed on the left side of the window.

Only the RFC1483 IRB service instance objects (for the selected chassis) are displayed in the RFC1483 IRB Services list. Service instances for other service types are listed in their appropriate Service Configuration windows. For example, L2TP service instance objects are displayed in the L2TP Configuration window. The RFC1483 IRB Services list is empty when no RFC1483 IRB Service instances have been created. See the “Creating a Service Instance” section on page 9-36 for details on how to create a service instance.



**Note** Proceed to the “Configuring the RFC1483 IRB Service Parameters” section on page 9-56 when you are not applying a service profile.

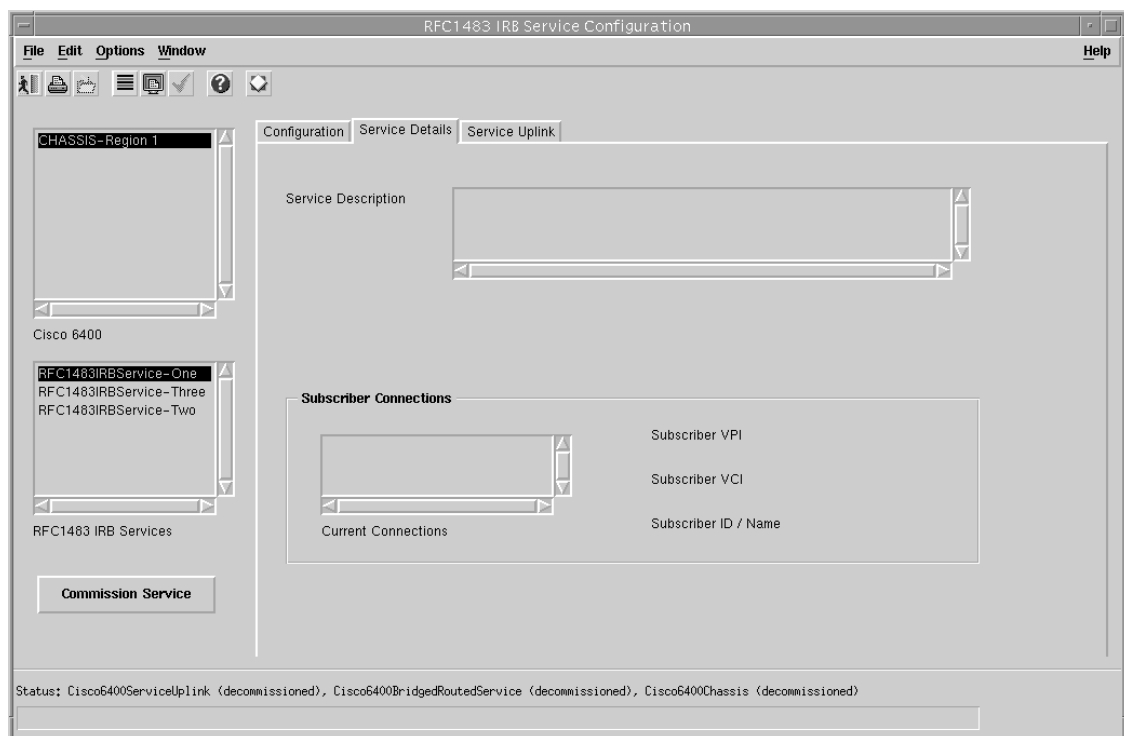
## Applying a RFC1483 IRB Service Profile

- Step 3 Select **Apply Profile** from the **Edit** menu.
- Step 4 Select the appropriate profile from the list of profiles displayed. The profile parameters are copied to the appropriate service instance parameters in the RFC1483 IRB Service Configuration window and appear in blue.

## Configuring the RFC1483 IRB Service Parameters

- Step 5 Configure the parameters displayed on the **Configuration** tab, as required.
- Step 6 Select the **Service Details** tab.

Figure 9-71 RFC1483 IRB Service Configuration Window (Service Details Tab)



See the “Service Details Tab” section on page 10-41 for details on the parameters displayed.

- Step 7 Enter a **Service Description** in the **Service Details** panel, if required.
- Step 8 Select whether to **Allow** or **Prevent** oversubscription.

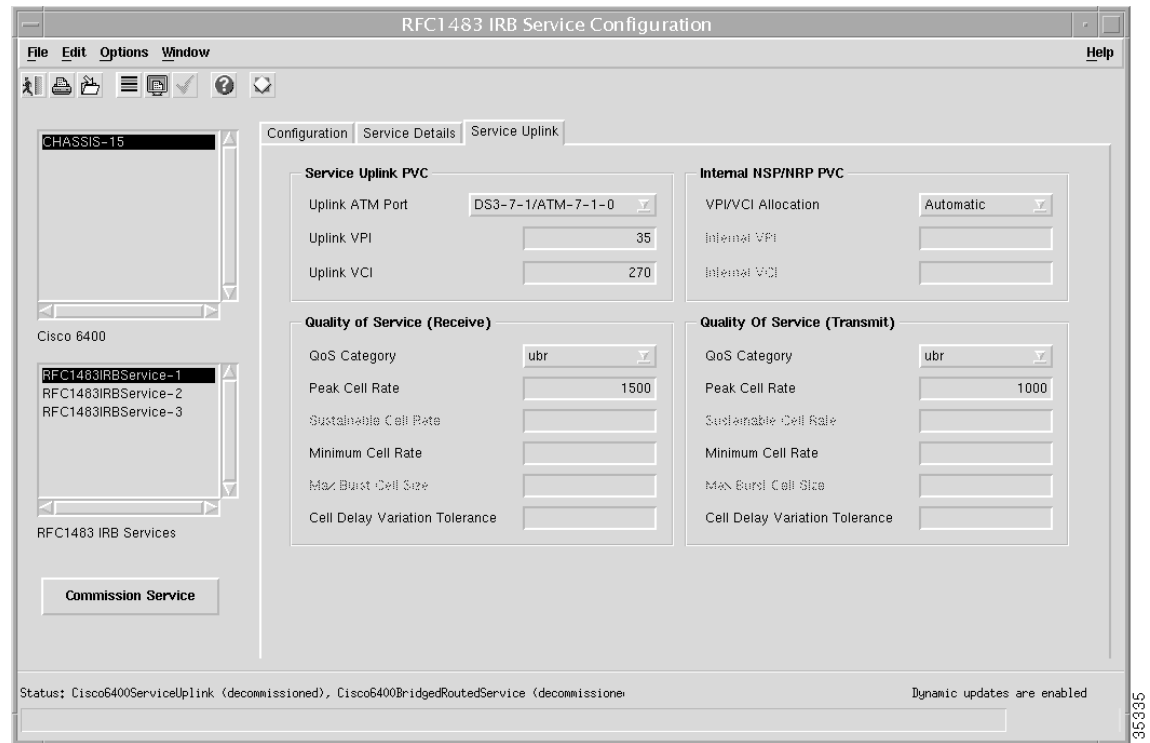
**Oversubscription** is set to **Allow** by default and an unlimited number of subscribers can be connected to the service. Selecting to **Prevent Oversubscription** ensures that the SCM limits the number of subscribers connected such that the sum of the subscriber’s peak cell rates never exceeds the peak cell rate reserved for the service on the uplink. **Oversubscription** functionality is not applicable to the PPPoA-SD and ATM services.

- Step 9 Select a connection from the **Connection** list and configure the values in the **Subscriber Connections** panel, as required.



Step 10 Select the **Service Uplink** tab.

Figure 9-72 RFC1483 IRB Service Configuration Window (Service Uplink Tab)



See the “Service Uplink Tab” section on page 10-43 for details on the parameters displayed on the **Service Uplink** tab.

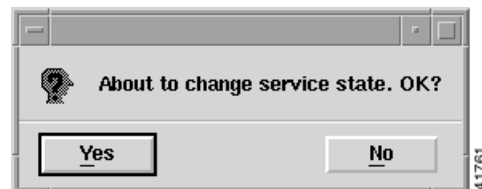
Step 11 Configure the parameters displayed on the **Service Uplink** tab, as required.

### Commissioning the RFC1483 IRB Service

Step 12 Click **Commission Service** to roll the service onto the Cisco 6400 UAC.

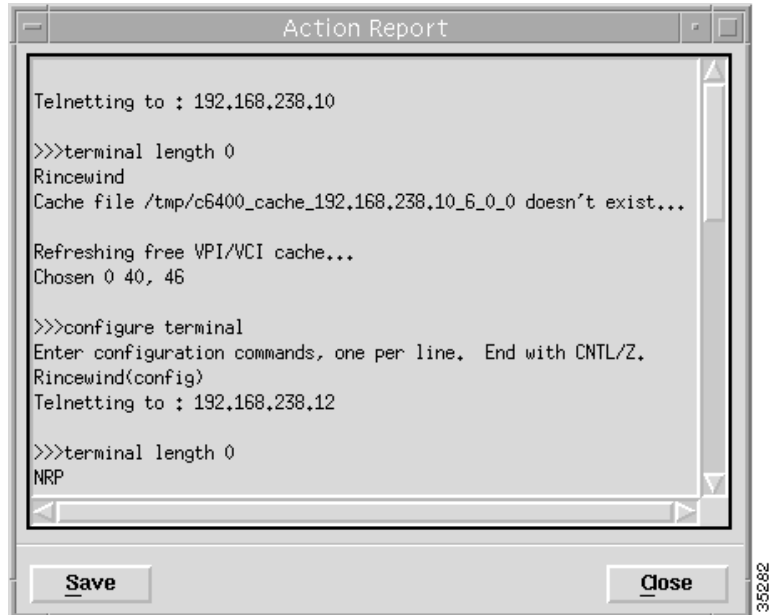
A pop up window appears for you to confirm that you wish to commission the selected service.

Figure 9-73 About to Change Service State Confirmation Window



- Step 13** Select **Yes** to commission the service (or **No** to return to the RFC1483 IRB Service Configuration window). The Action Report window appears.

*Figure 9-74 Action Report Window*



The Action Report window details the Cisco IOS commands executed when the service is commissioned. Invalid Cisco IOS commands result in a failure to commission the service.

- Step 14** Check the details in the Action Report window to ensure that the service was commissioned successfully.



**Caution**

The Cisco 6400 SCM will roll-back configuration changes applied if an error is detected in the execution of the Cisco IOS command sequence with your selected parameters. This insures that the Cisco 6400 UAC remains in a consistent state, even when errors are made entering parameters.

- Step 15** Select **Save** to save the Action Report, if required.
- Step 16** Select **Close** to close the Action Report window and return to the Service Instance Configuration window.
- Step 17** Select **Save** from the **File** menu to save the parameters configured.  
Select **Close** from the **File** menu to close the RFC1483 IRB Service Configuration window.

## Configuring and Commissioning an IP Uplink (for PTA-MD and RBE Subscribers) Service Instance

To configure and commission an IP Uplink service instance, follow these steps:

- Step 1** Select the **Cisco 6400 UAC, Service, Configure IP Uplink Service** option from a Site, Shelf, Chassis, or service instance object. The IP Uplink Service Configuration window appears (see Figure 9-75).

*Figure 9-75 IP Uplink Service Configuration Window (IP Uplink Configuration Tab)*

See the “Service Uplink Tab” section on page 10-50 for further details on the parameters displayed.

- Step 2** Select the appropriate **Cisco 6400** and **IP Uplink** service instance from the lists displayed on the left side of the window.

Only the IP Uplink service instance objects (for the selected chassis) are displayed in the IP Uplink Services list. Service instances for other service types are listed in their appropriate Service Configuration windows. For example, L2TP service instance objects are displayed in the L2TP Configuration window. The IP Uplink Services list is empty when no IP Uplink Service instances have been created. See the “Creating a Service Instance” section on page 9-36 for details on how to create a service instance.



**Note** Proceed to the “Configuring the IP Uplink (for PTA-MD and RBE Subscribers) Service Parameters” section on page 9-60 when you are not applying a IP Uplink service profile.

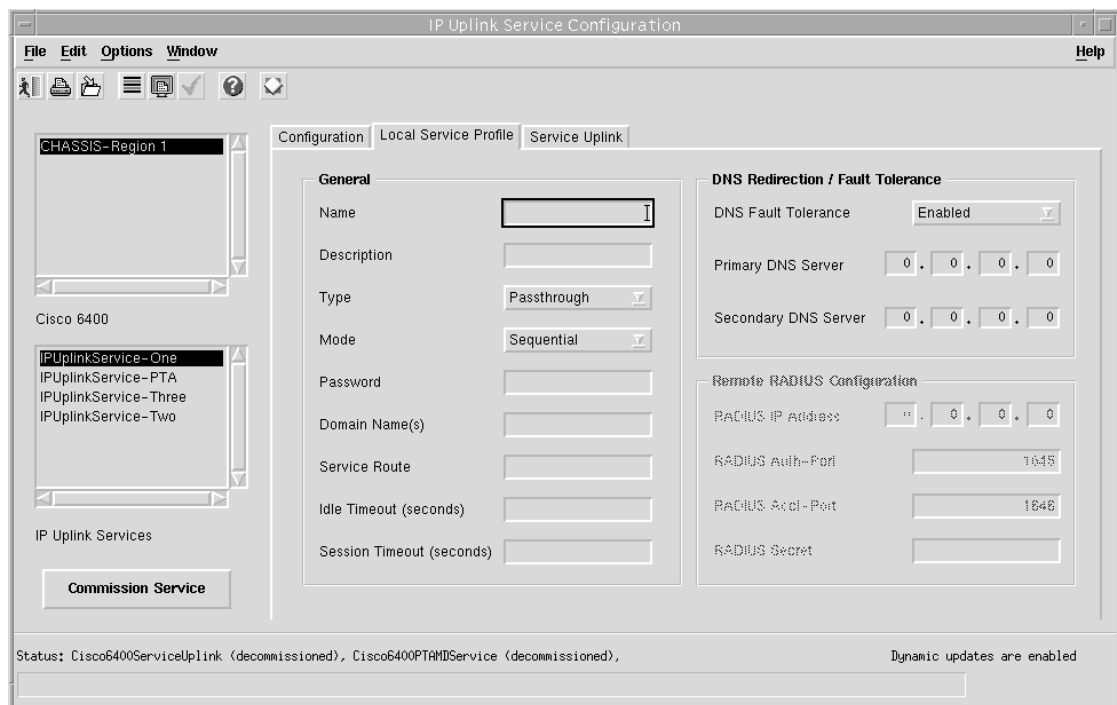
### Applying a IP Uplink (for PTA-MD and RBE Subscribers) Service Profile

- Step 3 Select **Apply Profile** from the **Edit** menu.
- Step 4 Select the appropriate profile from the list of profiles displayed. The profile parameters are copied to the appropriate service instance parameters in the IP Uplink Service Configuration window and appear in blue.

### Configuring the IP Uplink (for PTA-MD and RBE Subscribers) Service Parameters

- Step 5 Configure the parameters displayed on the **IP Uplink Configuration** tab, as required.
- Step 6 Select the **Local Service Profile** tab.

*Figure 9-76 IP Uplink Service Configuration Window (Local Service Profile Tab)*

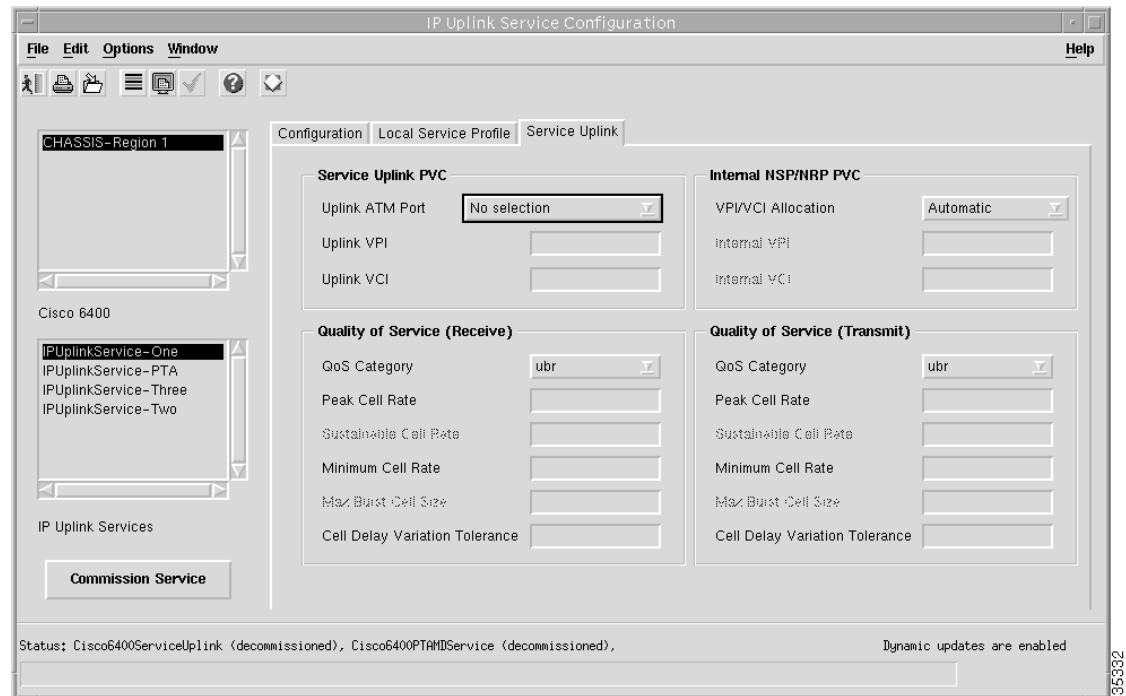


See the “Local Service Profile Tab” section on page 10-48 for further details on the parameters displayed.

- Step 7 Configure the parameters displayed on the **Local Service Profile** tab, as required.

**Step 8** Select the **Service Uplink** tab.

*Figure 9-77 IP Uplink Service Configuration Window (Service Uplink Tab)*



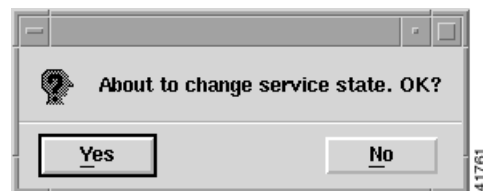
See the “Service Uplink Tab” section on page 10-50 for further details on the parameters displayed.

**Step 9** Configure the parameters displayed on the **Service Uplink** tab, as required.

### Commissioning the IP Uplink (for PTA-MD and RBE Subscribers) Service

**Step 10** Click **Commission Service** to roll the service onto the Cisco 6400 UAC. A pop up window appears for you to confirm that you wish to commission the selected service.

*Figure 9-78 About to Change Service State Confirmation Window*



- Step 11** Select **Yes** to commission the service (or **No** to return to the IP Uplink Service Configuration window). The Action Report window appears.

*Figure 9-79 Action Report Window*



The Action Report window details the Cisco IOS commands executed when the service is commissioned. Invalid Cisco IOS commands result in a failure to commission the service.

- Step 12** Check the details in the Action Report window to ensure that the service was commissioned successfully.



**Caution**

The Cisco 6400 SCM will roll-back configuration changes applied if an error is detected in the execution of the Cisco IOS command sequence with your selected parameters. This insures that the Cisco 6400 UAC remains in a consistent state, even when errors are made entering parameters.

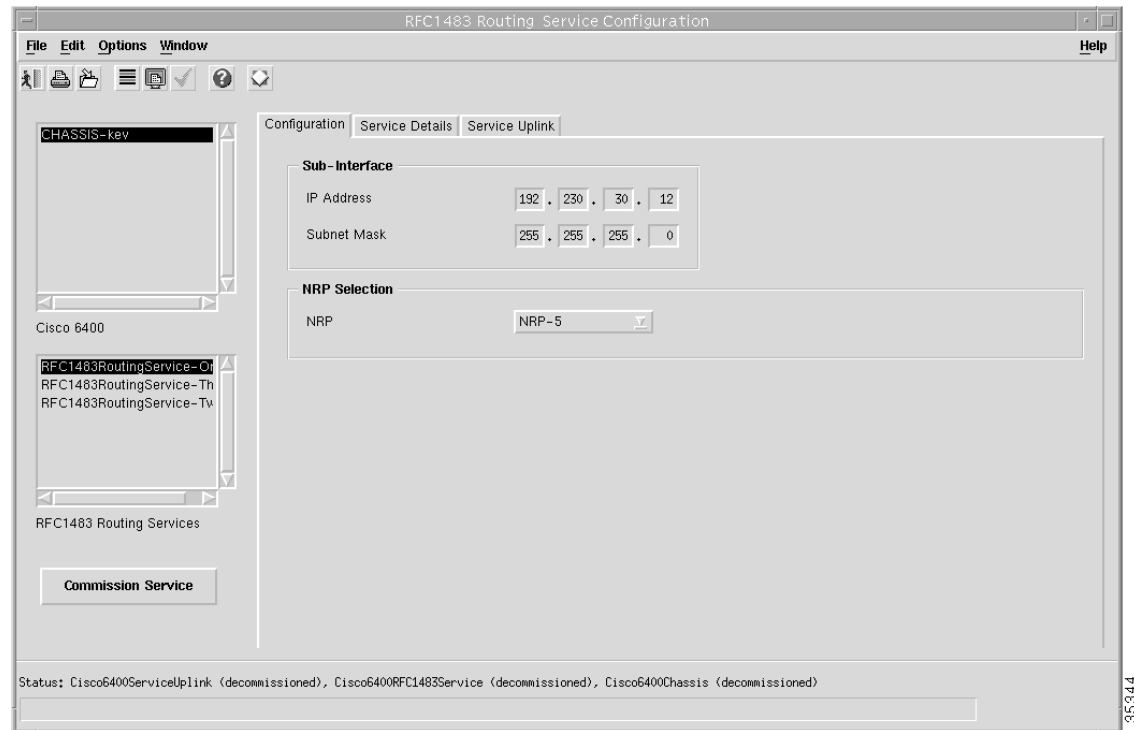
- Step 13** Select **Save** to save the Action Report, if required.
- Step 14** Select **Close** to close the Action Report window and return to the Service Instance Configuration window.
- Step 15** Select **Save** from the **File** menu to save the parameters configured.  
Select **Close** from the **File** menu to close the IP Uplink Service Configuration window.

## Configuring and Commissioning an RFC1483 Routing Service Instance

To configure and commission an RFC1483 routing service instance, follow these steps:

- Step 1** Select the **Cisco 6400 UAC, Service, Configure RFC1483 Routing Services** option from a Site, Shelf, Chassis, or service instance object. The RFC1483 Routing Service Configuration window appears (see Figure 9-80).

*Figure 9-80 RFC1483 Routing Service Configuration Window (Configuration Tab)*



See the “RFC1483 IRB Service Profile Configuration Window” section on page 10-11 for further details on the parameters displayed.

- Step 2** Select the appropriate **Cisco 6400** and **RFC1483 Routing Service** instance from the lists displayed on the left side of the window.

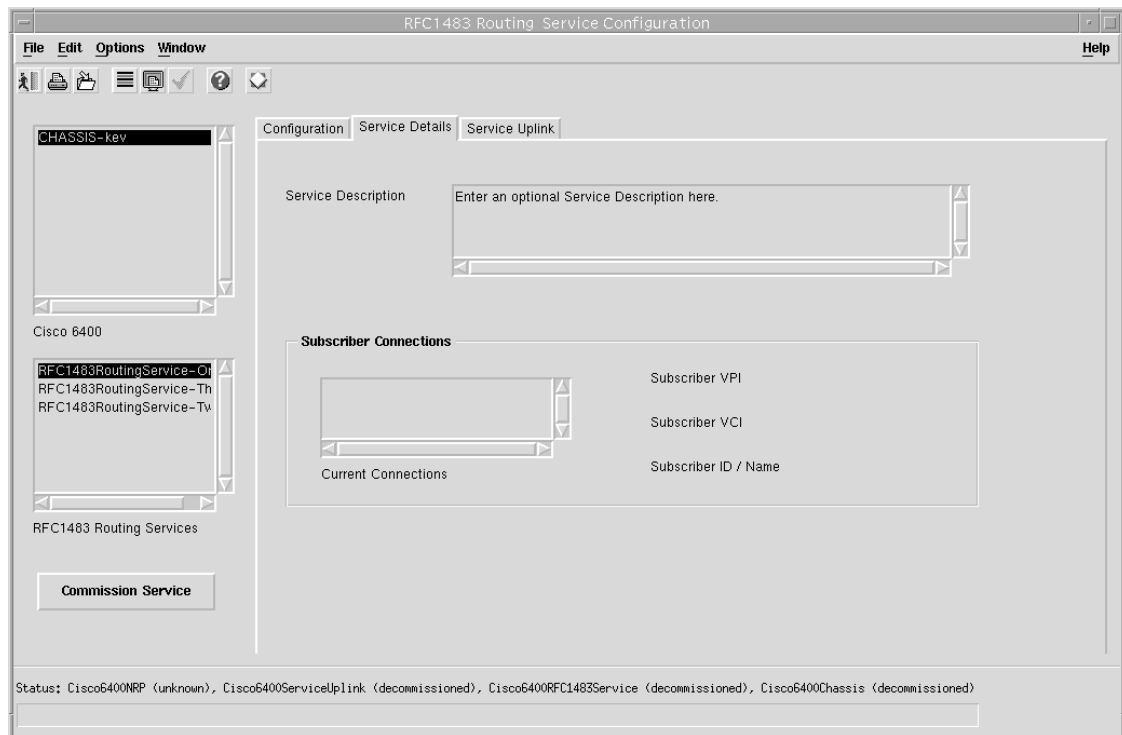


**Note** RFC1483 Routing service profiles cannot be created for the RFC1483 Routing service and therefore cannot be applied.

- Step 3** Configure the parameters displayed on the **Configuration** tab, as required.

**Step 4** Select the **Service Details** tab.

*Figure 9-81 RFC1483 Routing Service Configuration Window (Service Details Tab)*



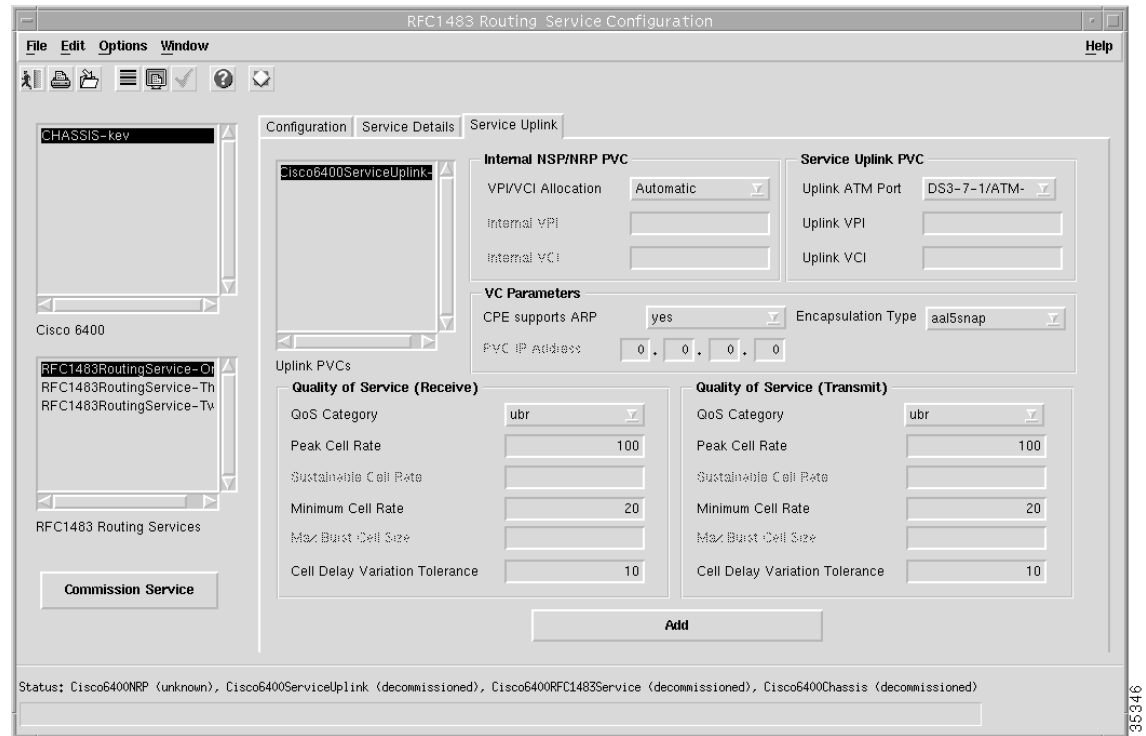
**Step 5** Enter a Service Description in the Service Details panel, when required.

**Step 6** Select a connection from the Current Connection list and configure the parameters in the Subscriber Connections panel, as required.

**Step 7** Select the **Service Uplink** tab.



Figure 9-82 RFC1483 Routing Service Configuration Window (Service Uplink Tab)



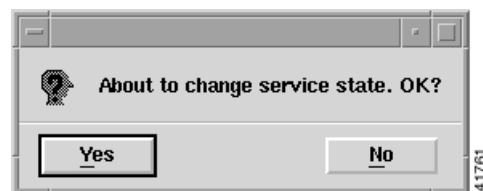
See the “RFC1483 Routing Service Configuration Window” section on page 10-52 for further details on the parameters displayed.

- Step 8 Configure the parameters displayed on the **Service Uplink** tab, as required.
- Step 9 Click **Add** to add a new service uplink. The RFC1483 services can have multiple service uplinks.

### Commissioning the RFC1483 Routing Service

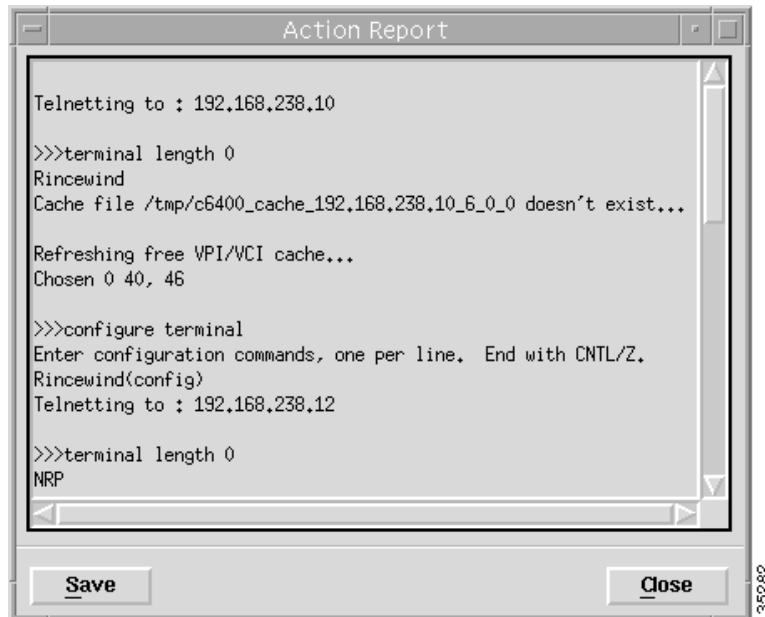
- Step 10 Click **Commission Service** to roll the service onto the Cisco 6400 UAC. A pop up window appears for you to confirm that you wish to commission the selected service.

Figure 9-83 About to Change Service State Confirmation Window



- Step 11** Select **Yes** to commission the service (or **No** to return to the RFC1483 Routing Service Configuration window). The Action Report window appears.

*Figure 9-84 Action Report Window*



The Action Report window details the Cisco IOS commands executed when the service is commissioned. Invalid Cisco IOS commands result in a failure to commission the service.

- Step 12** Check the details in the Action Report window to ensure that the service was commissioned successfully.



**Caution**

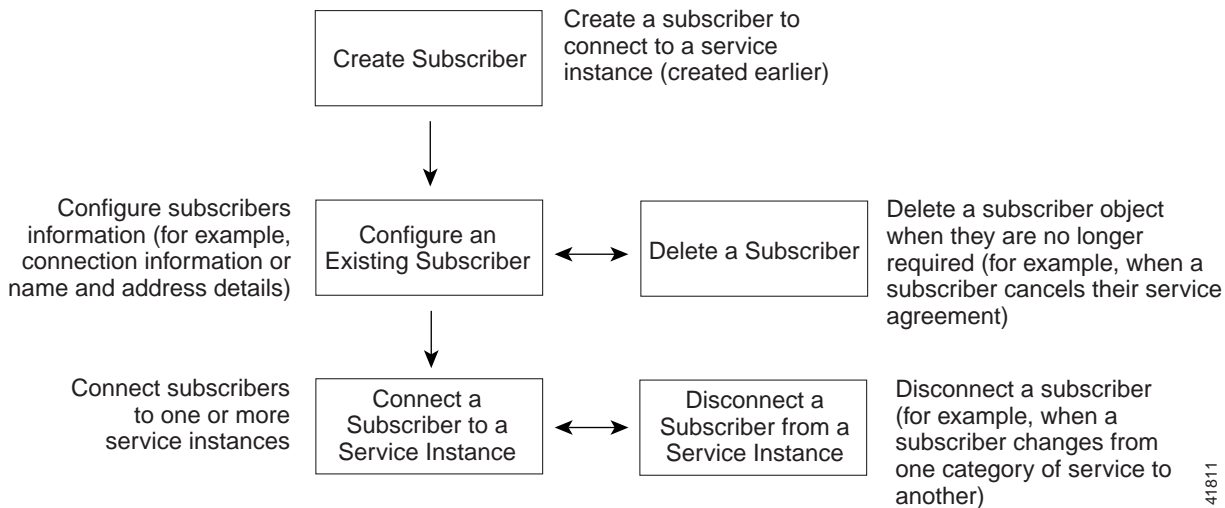
The Cisco 6400 SCM will roll-back configuration changes applied if an error is detected in the execution of the Cisco IOS command sequence with your selected parameters. This insures that the Cisco 6400 UAC remains in a consistent state, even when errors are made entering parameters.

- Step 13** Select **Save** to save the Action Report, if required.
- Step 14** Select **Close** to close the Action Report window and return to the Service Instance Configuration window.
- Step 15** Select **Save** from the **File** menu to save the parameters configured.  
Select **Close** from the **File** menu to close the RFC1483 Routing Service Configuration window.

# Subscriber Provisioning

Figure 9-85 displays a typical work flow that describes how to create, configure and connect subscribers (that is, provision end customers).

*Figure 9-85 Subscriber Provisioning Work Flow*



The first step is to create (deploy) one or more subscriber objects. Each subscriber object can then be configured with their own particular details (for example, connection or contact details).

Each subscriber can then be connected to one or more service instances. Service instances were created earlier. See the “Creating a Service Instance” section on page 9-36 for further details.

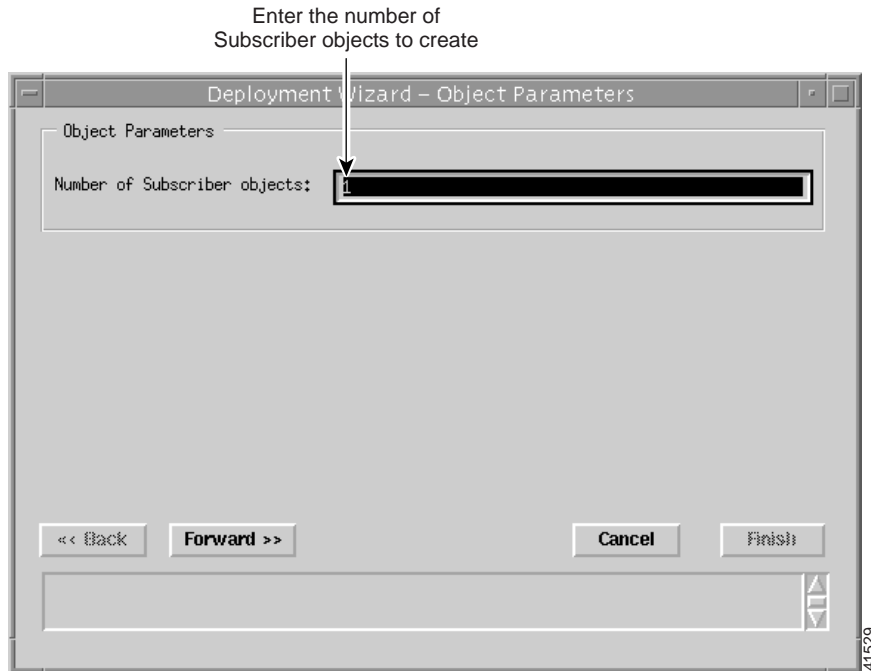
## Creating a Subscriber

Subscriber objects hold information related to the end subscriber. Subscribers are created by deploying them onto a selected Line Card.

To create subscribers, follow these steps:

- Step 1** Select the **Cisco 6400 UAC, Subscriber, Deploy** option from a Line Card. The Deployment Wizard - Object Parameters window (1 of 2) appears. (see Figure 9-86)

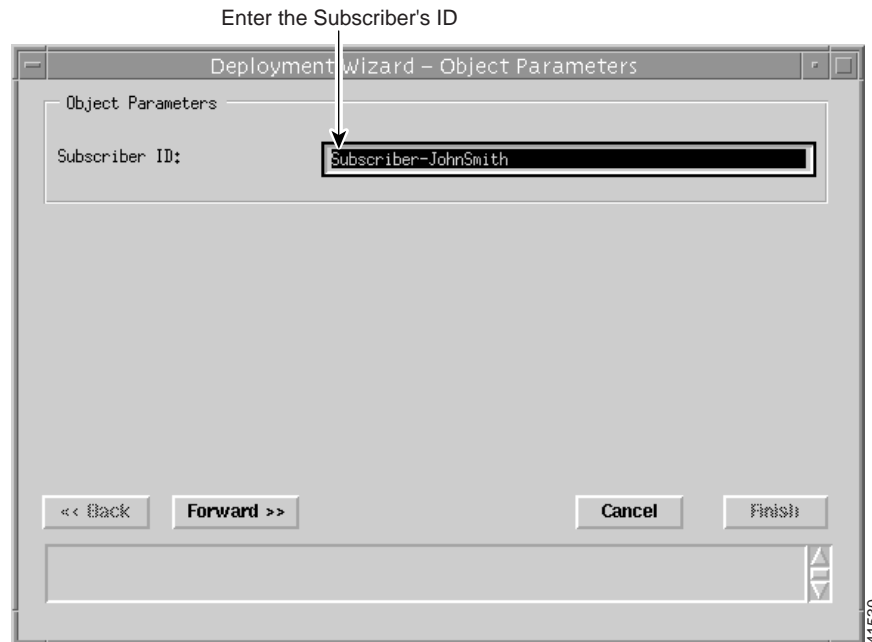
*Figure 9-86 Deployment Wizard - Object Parameters (1 of 2)*



- Step 2** Enter the **Number of Subscriber objects** you wish to create. A single Subscriber object was entered in the example. (see Figure 9-86)

- Step 3** Select **Forward**. The Deployment Wizard - Object Parameters (2 of 2) window appears. (see Figure 9-87)

*Figure 9-87 Deployment Wizard - Object Parameters (2 of 2)*



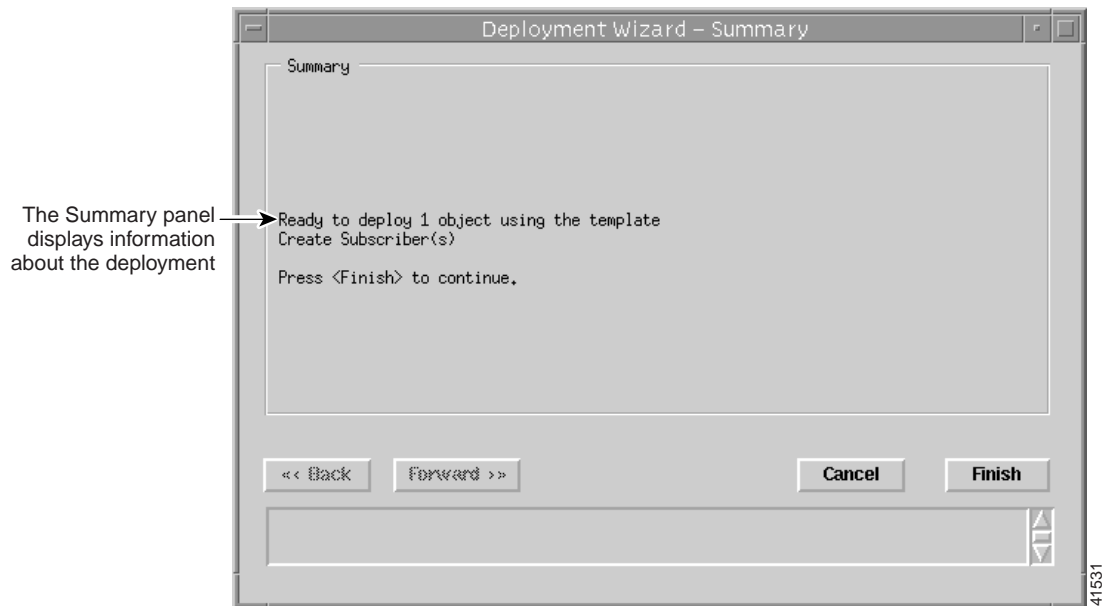
- Step 4** Enter a **Subscriber ID**. John Smith was entered in the example. (see Figure 9-87)
- Step 5** Click **Forward**.



**Note** Repeat steps 4 and 5 for the **Number of Subscribers** entered in step 2.

**Step 6** Click **Forward**. The Deployment Wizard Summary window appears (see Figure 9-88).

*Figure 9-88 Deployment Wizard - Summary*



Summary information displays in the Summary panel.

- Step 7** Check the Summary information is correct.
- Step 8** Click **Finish** (when the **Deployment Summary** information is correct) to create the new Subscriber objects.
- Step 9** Proceed to the “Configuring a Subscriber” section on page 9-71.

## Deleting a Subscriber

To delete a subscriber object, follow these steps:

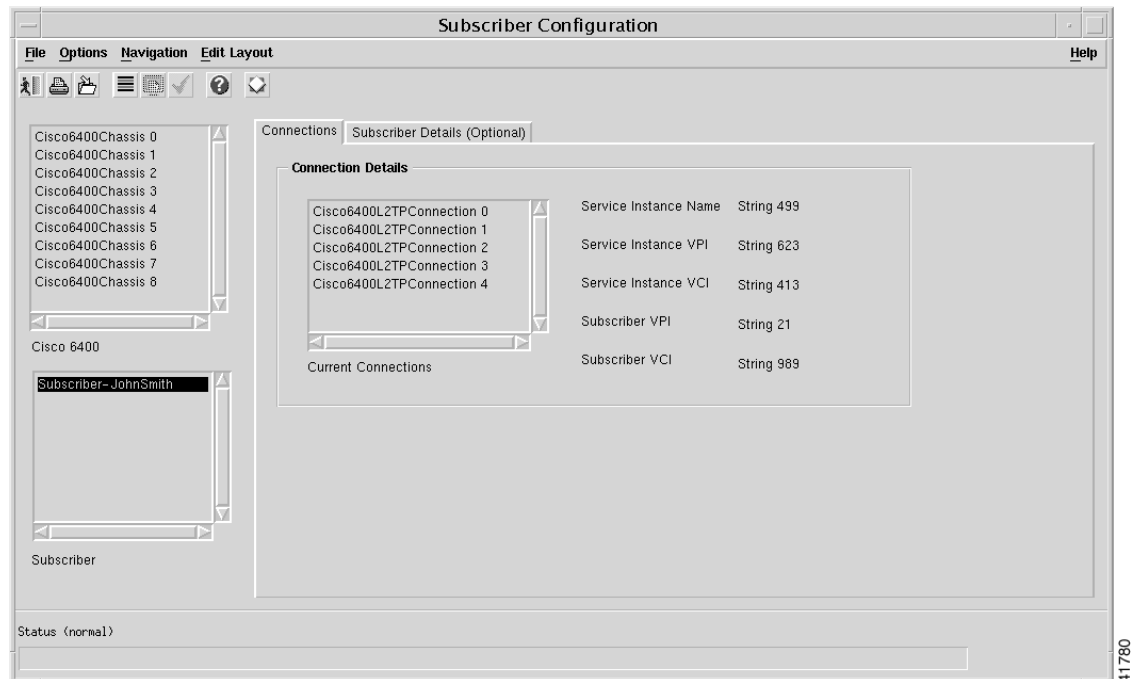
- Step 1** Select the **Cisco 6400 UAC, Subscriber, Configure Subscriber** option at an appropriate Line Card.
- Step 2** Select the **Subscriber** from the list at the left side of the window and right click.
- Step 3** Select **Delete Objects**.
- Step 4** Check the Deletion Summary details.
- Step 5** Click **Finish**.

## Configuring a Subscriber

To configure a subscriber's details, follow these steps:

- Step 1** Select the **Cisco 6400 UAC, Subscriber, Configure Subscriber** option at an appropriate Line Card. The Subscriber Configuration window appears (see Figure 9-89).

*Figure 9-89 Subscriber Configuration Window (Connections Tab)*

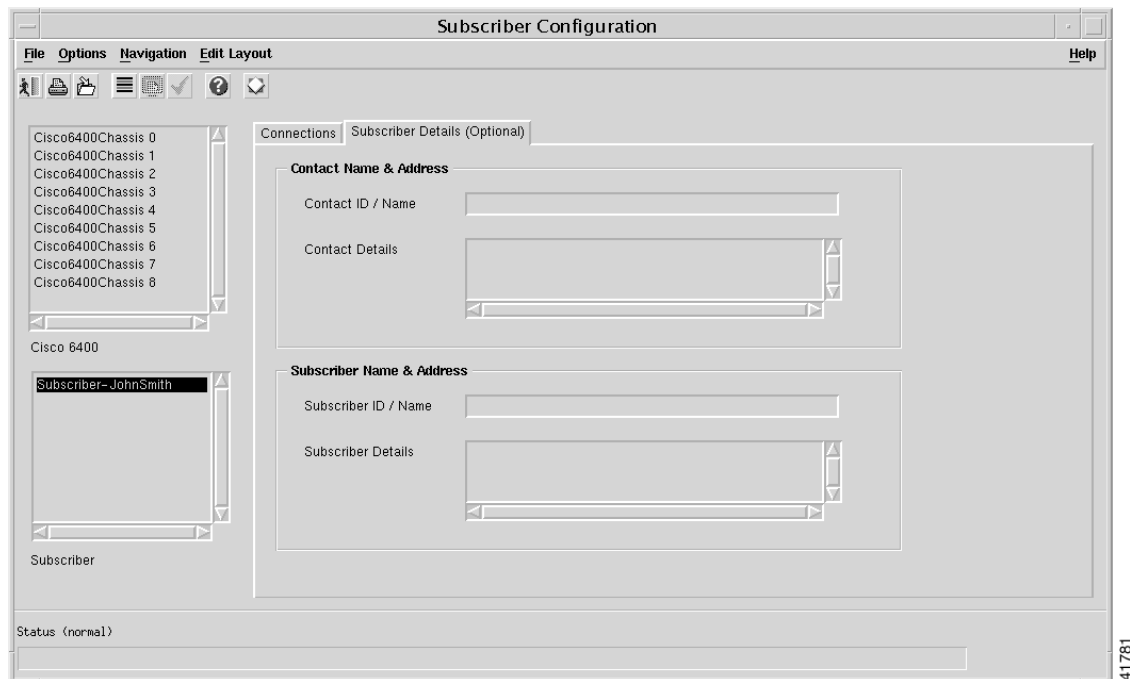


See the “Subscriber Configuration Window” section on page 10-57 for details on the parameters that appear on the Subscriber Configuration window.

- Step 2** Select a **Cisco 6400** and **Subscriber** from the appropriate lists at the left side of the window.
- Step 3** Select a **Current Connection** from the list displayed in the **Connection Details** panel.
- Step 4** Configure the parameters displayed in the **Connection Details** panel.

Step 5 Select the **Subscriber Details (Optional)** tab.

Figure 9-90 Subscriber Configuration Window (Subscriber Details (Optional) Tab)



**Note** Entering information into the **Subscriber Details (Optional)** tab is voluntary. You can enter any information you like into the **Subscriber Details** tab. For example, you may decide to enter a subscriber identification in the **Subscriber Name** box and an e-mail address in the **Subscriber Address** box.

- Step 6 Enter a **Contact ID / Name** and **Contact Address** into the Contact Name & Address panel, as required.
- Step 7 Enter a **Subscriber ID / Name** and **Subscriber Details** into the Subscriber Name & Address panel, as required.
- Step 8 Select the **Save** option from the **File** menu to save the subscriber information.
- Step 9 Select the **Close** option from the **File** menu to close the Subscriber Configuration window.

## Connecting a Subscriber to a Service Instance

Subscribers are connected to service instances within the Service/Subscriber Connection window. The Service/Subscriber Connection window displays three tabs: Connection details, Connect to Single Domain, and Connect to Multi-Domain. Configuration information is required into one or more tabs when connecting a subscriber to a service instance. Certain parameters are grayed out, depending upon what type of service you are trying to connect to.



Table 9-2 displays the Cisco 6400 SCM service types and the tabs in the Service/Subscriber Connection window that should be configured for each service type.

*Table 9-2 Connecting a Subscriber to a Service Instance*

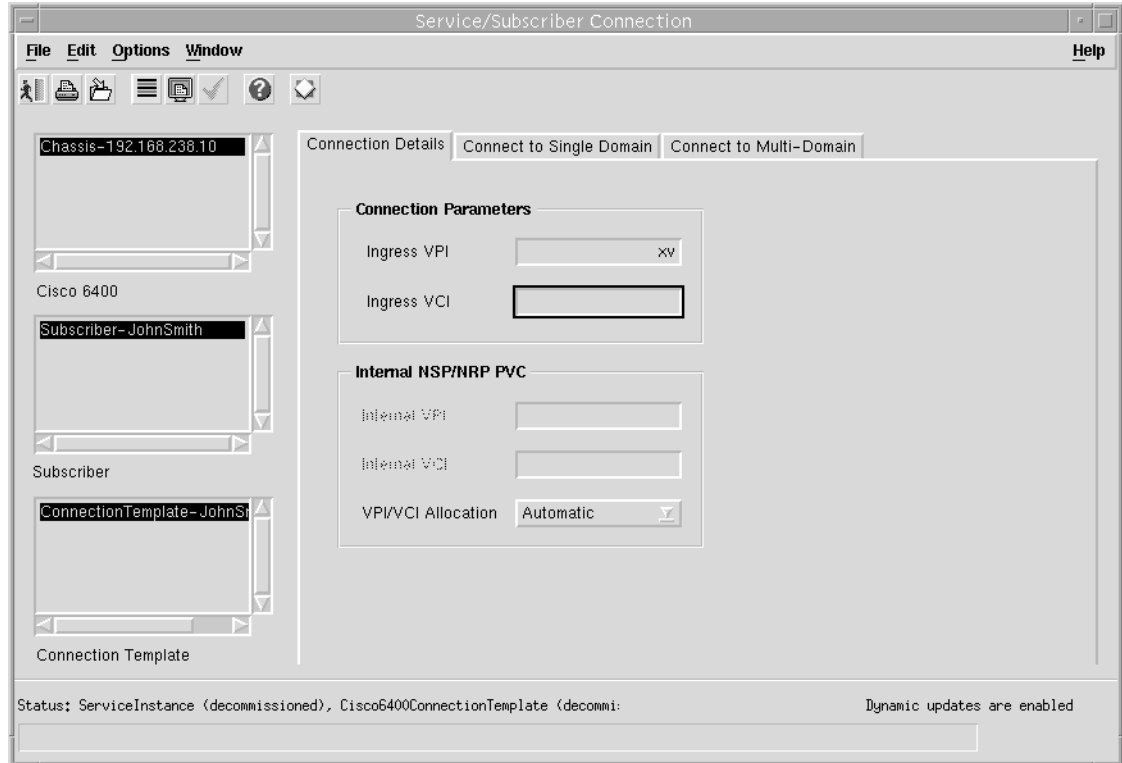
Cisco 6400 Service Type	Connection Details Tab	Connect To Single Domain Tab	Connect to Multi-Domain Tab
Pure ATM Switching Service	Configure the parameters displayed in the Connection Parameters and Internal NSP, NRP PVC panels for all service types, as required.	Configure the parameters displayed, as required for all service types. Click Connect when required.	Not required
PPPoA Single Domain			Not required
L2TP			Not required
RFC1483 Routing			Not required
RFC1483 Bridging			Not required
RFC1483 IRB			Not required
IP Uplink			Configure the parameters displayed, as required. Click Connect when required.

To connect a subscriber to a service instance, follow these steps:

- Step 1** Select the **Cisco 6400 UAC, Subscriber, Connect** option from an NSP card.

The Service/Subscriber Connection window (shown in Figure 9-91) appears. See the “Service/Subscriber Connection Window” section on page 10-60 for further details on the parameters displayed.

Figure 9-91 Service/Subscriber Connection Window (Connection Details Tab)



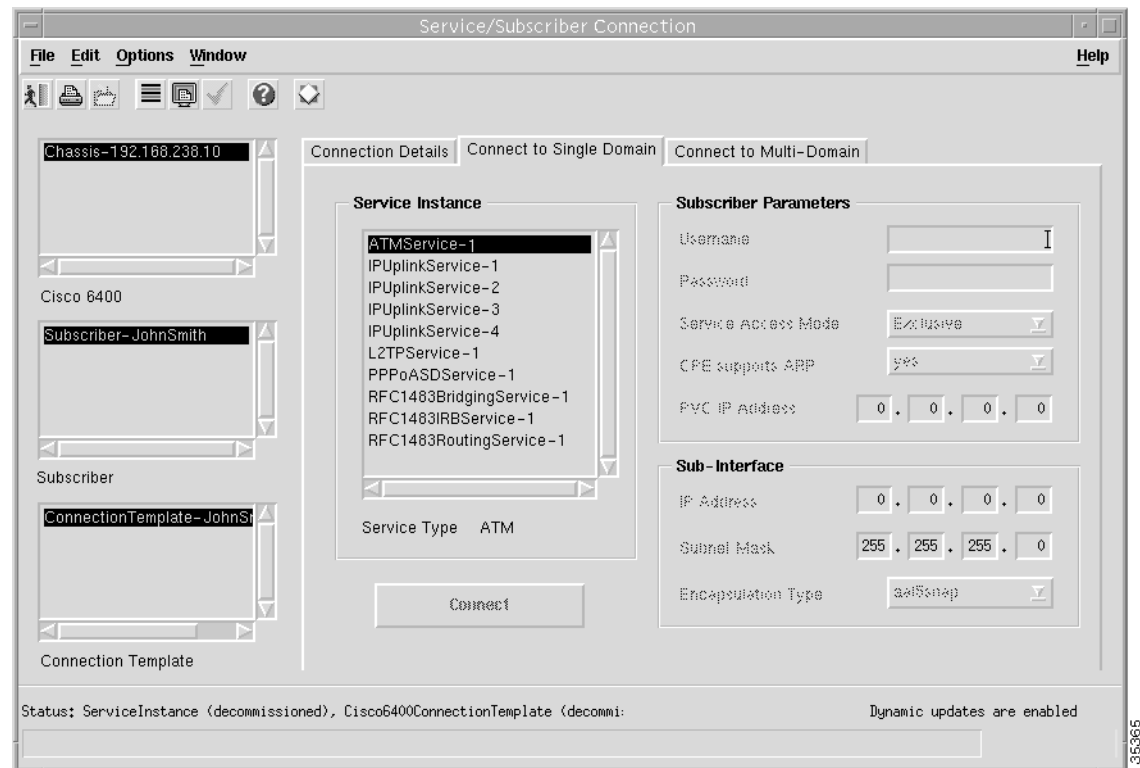
- Step 2** Select a **Cisco 6400** chassis from the Cisco 6400 list displayed on the left side of the window.
- Step 3** Select a **Subscriber** from the Subscriber list displayed on the left side of the window.
- Step 4** Select a **Connection Template** from the Connection Template list displayed on the left side of the window.
- Step 5** Configure the parameters in the Connection Parameters, and Internal NPS, NRP PVC frames, as required.

**Step 6** Select the **Connect to Single Domain** tab.



**Note** When you select an IP Uplink service (Service Type of PTA-MD) and this service instance does not have a Local Service Profile (LSP) configured, the Connect button is grayed out. When you do connect to an IP Uplink service using the Connect to Single Domain tab, this is equivalent to the PTA-MD static case used in Release 1.3 of the Cisco 6400 SCM software.

*Figure 9-92 Service/Subscriber Connection Window (Connect to Single Domain Tab)*



**Step 7** Select a **Service Instance** from the list displayed in the Service Instance panel.

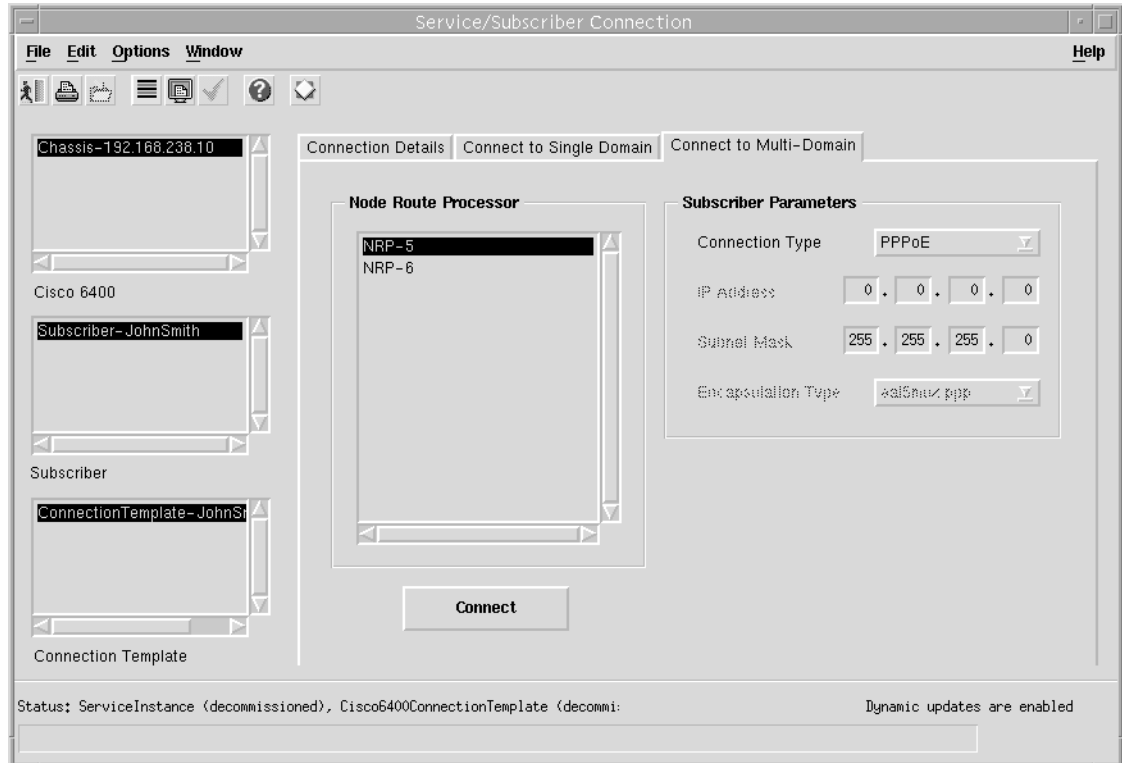
A Service Instance is a service object, that is, a single service deployed on the Cisco 6400 UAC. It contains all of the configuration information required for the service to run.



**Note** Inappropriate parameters are grayed out in each of the frames displayed on the Connection Details, Connect to Single Domain, and Connect to Multi-Domain tabs when a Service Instance is selected.

- Step 8** Configure the parameters displayed in the Connect to Single Domain tab, as required.
- Step 9** Select the **Connect to Multi-Domain** tab.

*Figure 9-93 Service/Subscriber Connection Window (Connect to Multi-Domain Tab)*



- Step 10** Select an **NRP** from the Node Route Processor list.
- Step 11** Configure the parameters displayed in the Connect to Multi-Domain tab, as required.
- Step 12** Click **Connect**. A pop up window appears (see Figure 9-94) asking you to confirm that you wish to connect the selected subscriber.

*Figure 9-94 Connect Subscriber to NRP Window*



- Step 13** Click Yes to proceed. An Action report window appears displaying the Cisco IOS transaction log as connection occurs.

**Note**

---

A Subscriber connection object is automatically created and placed below the appropriate service instance in the Cisco6400ServiceView and also in the Cisco6400SubscriberView below the appropriate subscriber object. Performance logging can be Activated or Deactivated for each subscriber connection object. See Table 8-1 on page 8-2 for further details.

---

**Note**

---

The **Connect** button is grayed out when the Service Instance is in a **Commissioned** state.

---

If the **Connect** operation fails the service instance remains in the **Decommissioned** state (that is, no configuration is applied to the Cisco 6400 UAC). The Action Report window may identify why the connection failed. Failure diagnostics information can also be located by examining the Cisco IOS log.

Common failure causes can include:

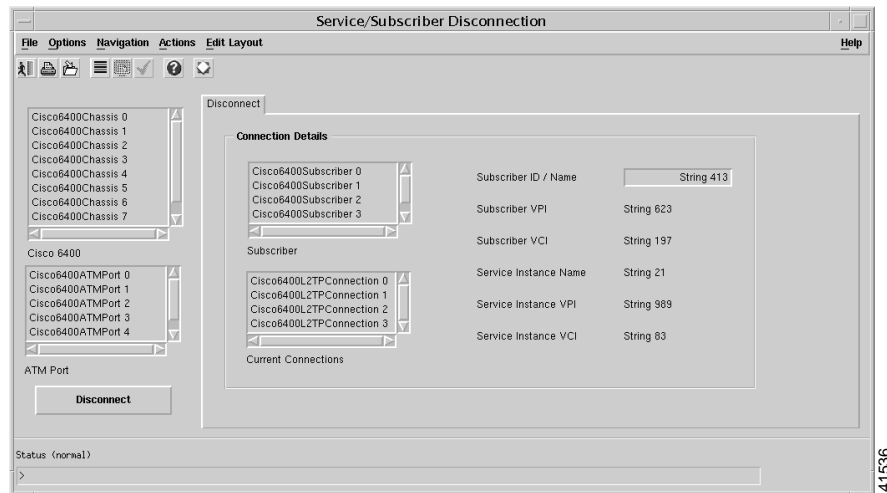
- Specifying duplicate (already used) **Ingress PVC** details.
  - Forgetting to configure the **QoS Parameters** in the connection template.
  - Specifying invalid **Ingress PVC** details.
  - Selecting the **Manual** option for **Internal PVC Parameters** allocation and selecting a PVC that is already allocated.
-

## Disconnecting a Subscriber from a Service Instance

To disconnect a subscriber from a service instance, follow these steps:

- Step 1** Select the **Cisco 6400 UAC, Subscriber, Disconnect** option from an NSP card. The Service/Subscriber Disconnection window appears.

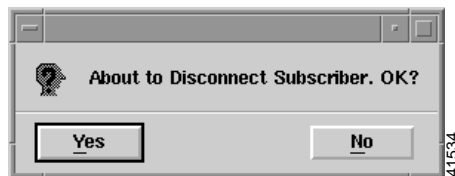
*Figure 9-95 Service/Subscriber Disconnection Window (Disconnect)*



See the “Service/Subscriber Disconnection Window” section on page 10-64 for further details on the parameters contained in the Service/Subscriber Disconnection window.

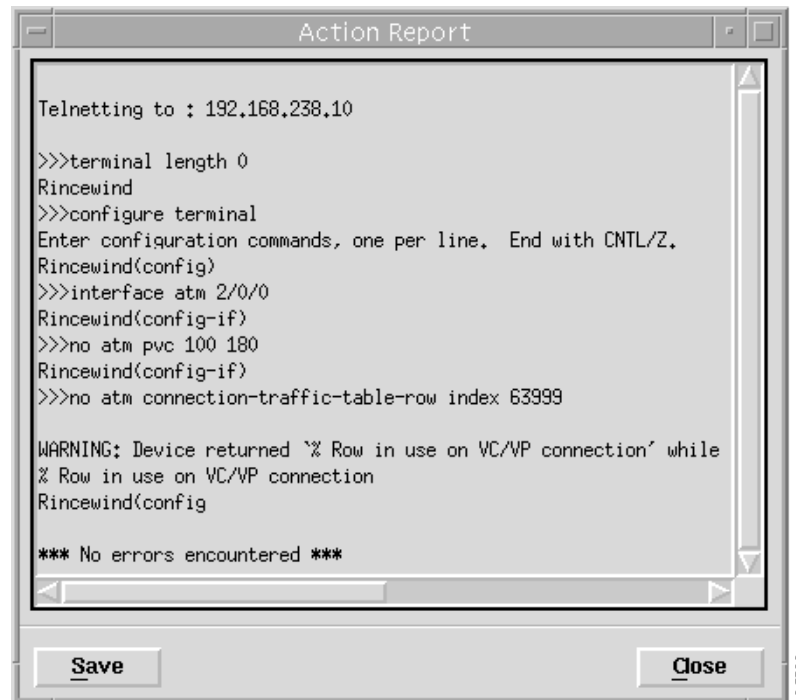
- Step 2** Select the **Cisco 6400** chassis and **ATM Port** from the lists displayed on the left side of the window.
- Step 3** Select a **Subscriber** and **Current Connections** from the from the lists displayed in the **Connection Details** panel.
- Step 4** Click **Disconnect**. A pop up window appears to inform you that the selected subscriber is about to be disconnected.

*Figure 9-96 About to Disconnect Subscriber*



- Step 5** Click **Yes** to disconnect the subscriber. The Action Report window appears confirming that the subscriber was disconnected.

*Figure 9-97 Action Report Window*



- Step 6** Click **Close** to close the Action Report window or click **Save** to save the Action Report. The Action Report can be saved and used for diagnostic purposes. The “\*\*\* No errors encountered \*\*\*” message appears to show that disconnection was successful.

# Administration

## Editing a Currently Connected Subscriber's Details

This operation can be performed without disconnecting the subscriber.

To edit a currently connected subscriber's details, follow these steps:

- 
- Step 1 Select the **Configure Subscribers** option from a line card.
  - Step 2 Select the **NSP, DSLAM** and **Subscriber** to display the subscribers details.
  - Step 3 Enter the **Contact** and **Subscriber Details** and then save your changes.
- 

## Moving Subscribers between Services (or NRPs)

To move subscribers between services (or NRPs), follow these steps:

- 
- Step 1 From a line card select disconnect subscribers.
  - Step 2 Select the subscriber to disconnected.
  - Step 3 Press the **Disconnect** button.
  - Step 4 Select a new service.
  - Step 5 Connect the subscriber to a new service instance (and **NRP**, if appropriate).
-



## Free Manuals Download Website

<http://myh66.com>

<http://usermanuals.us>

<http://www.somanuals.com>

<http://www.4manuals.cc>

<http://www.manual-lib.com>

<http://www.404manual.com>

<http://www.luxmanual.com>

<http://aubethermostatmanual.com>

Golf course search by state

<http://golfingnear.com>

Email search by domain

<http://emailbydomain.com>

Auto manuals search

<http://auto.somanuals.com>

TV manuals search

<http://tv.somanuals.com>