



# **Installing Your Multifunction to Your Network for the First Time**

**PIXMA MX492**

**Windows OS**

# Installing Your Multifunction to Your Network for the First Time

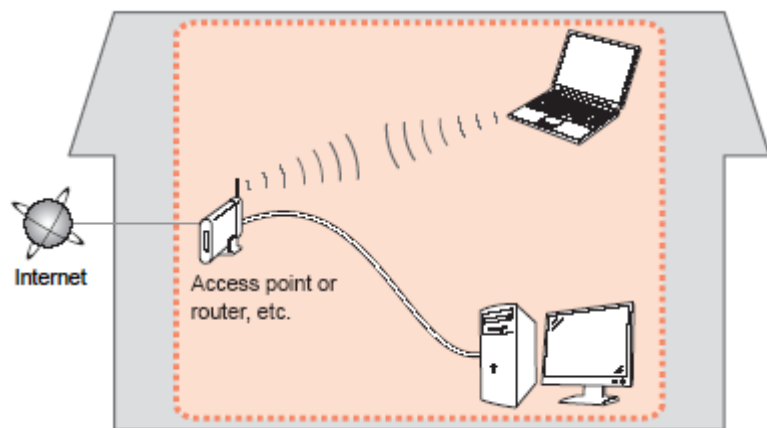
PIXMA MX492  
Windows OS

<b>Preparing to Connect to the Network</b>	<b>3</b>
Network Requirements	3
Notes on Wireless Connection	4
<b>Installing the Drivers &amp; Software</b>	<b>5</b>

# Preparing to Connect the Multifunction to the Network

## Network Requirements

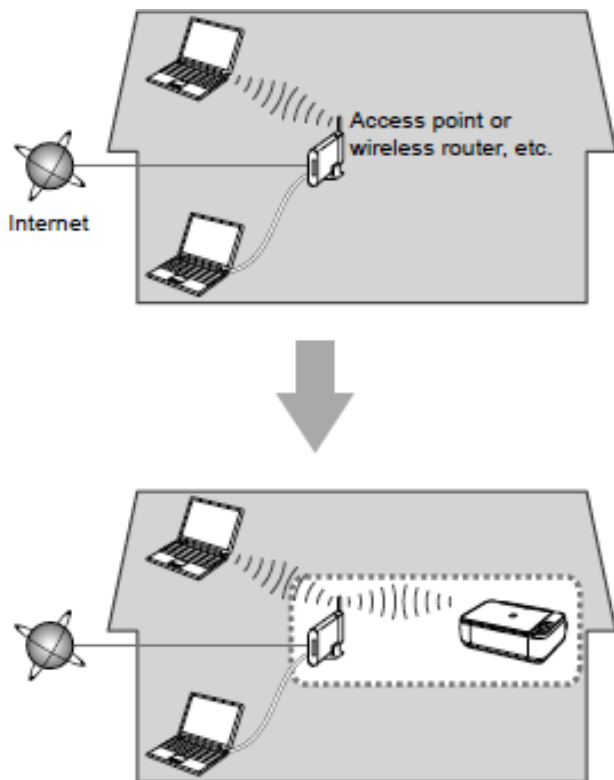
Before connecting the machine to the network, make sure that configuration of the computer and access point or router is complete, and that the computer is connected to the network.



## Wireless Connection

Before connecting the machine to the network, the computer needs to be connected to the network. Make sure that configuration of the computer and access point or router is complete.

# Preparing to Connect the Multifunction to the Network



## Notes on Network Connection

- The configuration, router functions, setup procedures and security settings of the network device vary depending on your system environment. For details, refer to your device's instruction manual or contact its manufacturer.
- In an office setup, consult your network administrator
- If you connect to a network that is not protected with security measures, there is a risk of disclosing data such as your personal information to a third party.
- Place the machine and computer on the same network segment.

# Installing the Drivers & Software

## Software Installation

To use the machine by connecting it to a computer, software including the drivers needs to be copied (installed) to the computer's hard disk. Installation time varies depending on the computer environment or the number of application software to be installed.

### **IMPORTANT**

- Log on as the administrator (or a member of the Administrators group).
- Quit all running applications before installation.
- Do not switch users during the installation process.
- Internet connection may be required during the installation. Connection fees may apply. Consult the internet service provider.
- It may be necessary to restart your computer during the installation process. Follow the on-screen instructions and do not remove the Setup CD-ROM during restarting. The installation resumes once your computer has restarted.
- If the firewall function of your security software is turned on, a warning message may appear that Canon software is attempting to access the network. If such a warning message appears, set the security software to always allow access.

# Installing the Drivers & Software

To set up the PIXMA MX492 to your wireless network, you must first install the software to your computer.

To begin the setup procedure, insert the Setup CD-ROM into your computer.\*



The setup program will start automatically. The setup instructions presented in this document describe the “**Cableless Setup**” method which does not require the need to know the SSID (network name), or network passphrase and does not require the printer to be temporarily connected to the computer with a USB cable.

The **Cableless Setup** is not supported in Windows XP. For Windows XP Users: Use the “ [Wireless Setup Using the USB Cable](#)” method , whereby a USB cable is temporarily connected between the printer and computer during setup.

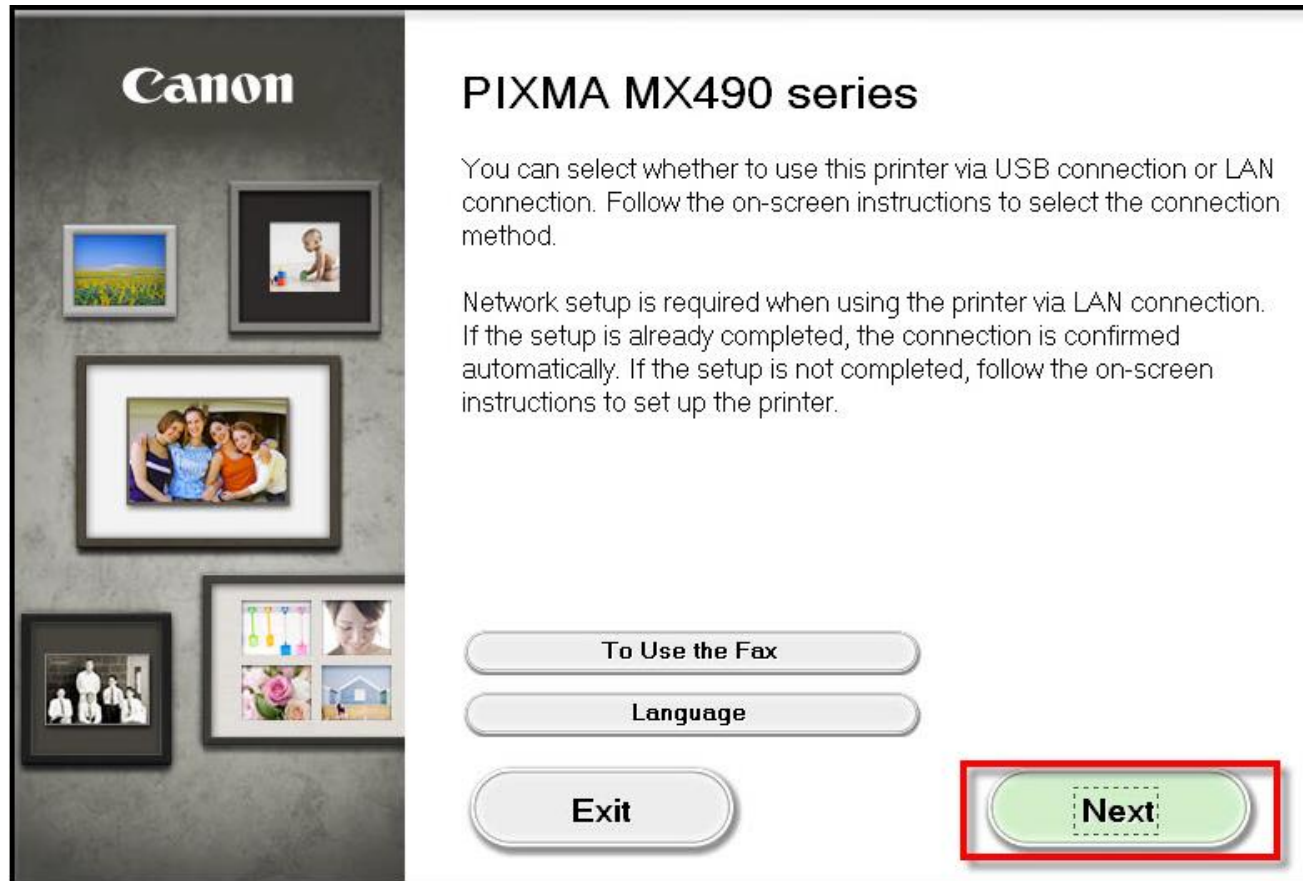
\*If you don't have or cannot use the Setup CD-ROM, follow the steps below to start the setup.

- [Download the software](#) (click the link to download)
- Double-click the downloaded .exe file.

If the **User Account Control** dialog box appears during the setup, click **Yes** or **Continue**.

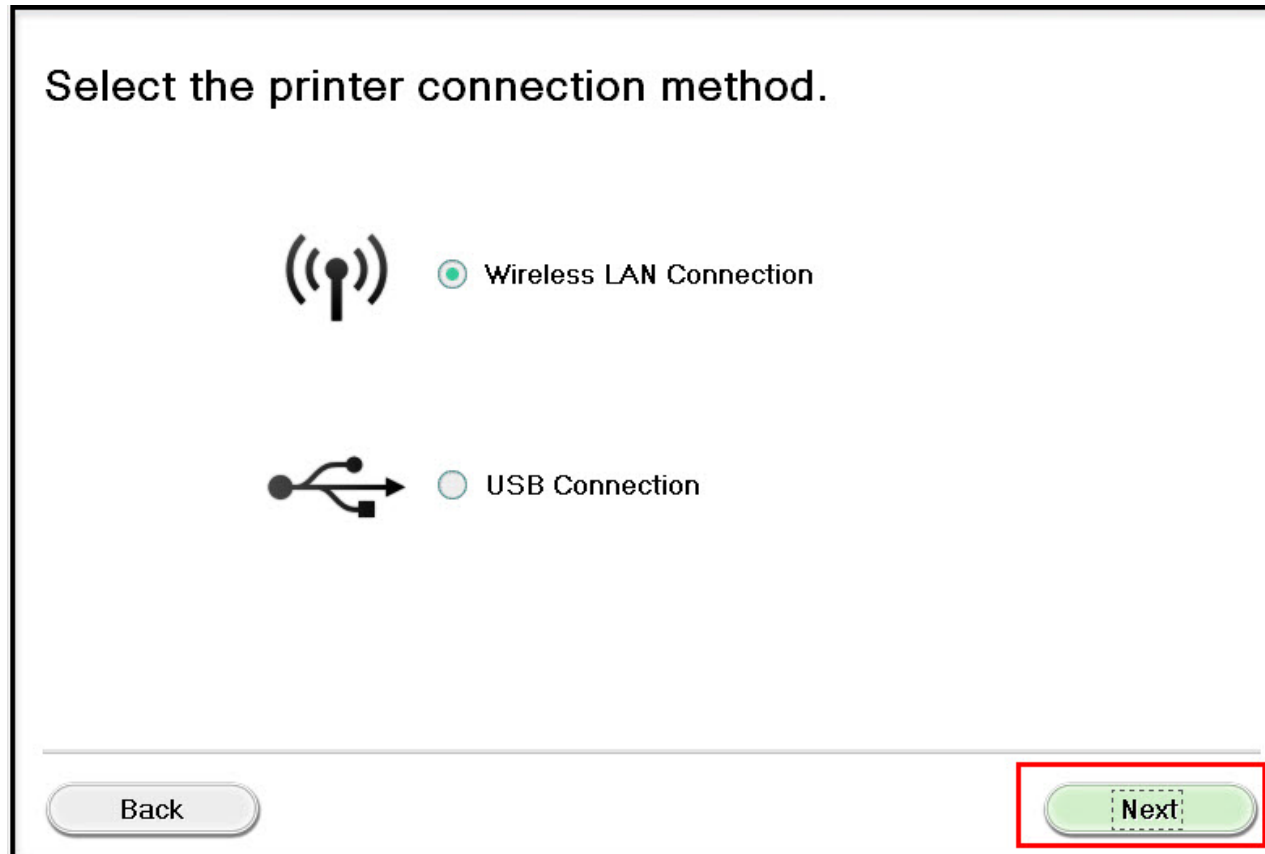
# Installing the Drivers & Software

Click **Next** on the initial screen.



# Connecting to the Network

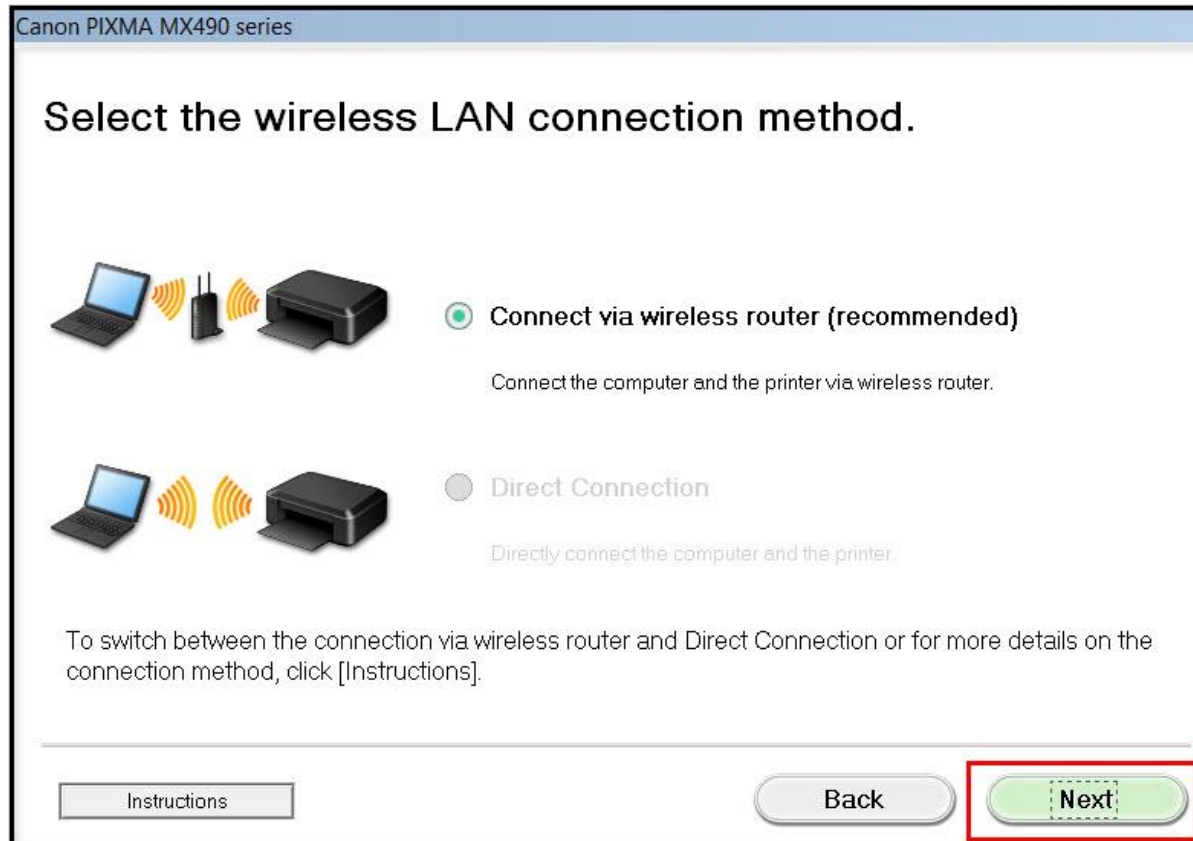
On the following screen, select **Wireless LAN Connection**, then click **Next**.





# Connecting to the Network

On the following screen, select **Access Point Connection**, then click **Next**.



# Connecting to the Network

Continue following on-screen instructions. On the **Printers on Network List** screen, check the **Setting printer could not be found on the list** checkbox and click **Next**.

Canon PIXMA MX490 series

## Printers on Network List

Serial Number	MAC Address	IP Address

Setting printer could not be found on the list

Update

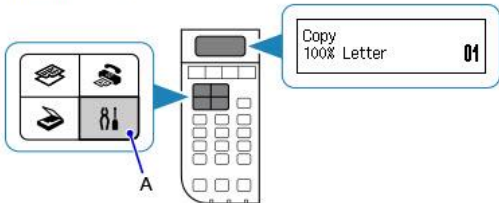
1. To set a printer on the network, select one from the above printers list, and then click [Next].  
Serial number can be found on the back of the printer or the Letter of Guarantee.
2. If the setting printer could not be found on the above list, turn on the printer and click [Update].
3. If the printer could not still be found, select [Setting printer could not be found on the list], and then click [Next].

Back Next

# Connecting to the Network

Carefully follow the instructions on the **Printer Setup** screens **1-1** and **1-2** to select **Wireless LAN setup** on your machine.

1-1 Printer Setup

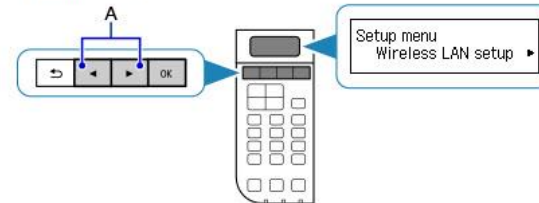


1. Press the **Setup** button (A) on the printer.

Click **Next** to proceed to the next step.

Start Again **Next**

1-2 Printer Setup



1. Use the ◀ or ▶ button (A) to select **Wireless LAN setup**.

2. Press the **OK** button.

Start Again Back **Next**

# Connecting to the Network

Continue to follow on-screen instructions. On the **Setup Procedure Selection** screen, if your printer's display looks like the example on the left (above Push Button Method), press the machine's **Stop** button, then click **Other Methods** on the **Setup Procedure Selection** screen (2-1). If the printer's display already is like the example on the right, click **Other Methods**.

2-1 Setup Procedure Selection ▲

The printer will automatically search for compatible **wireless routers**.

Click the method below that matches the screen displayed on your printer.

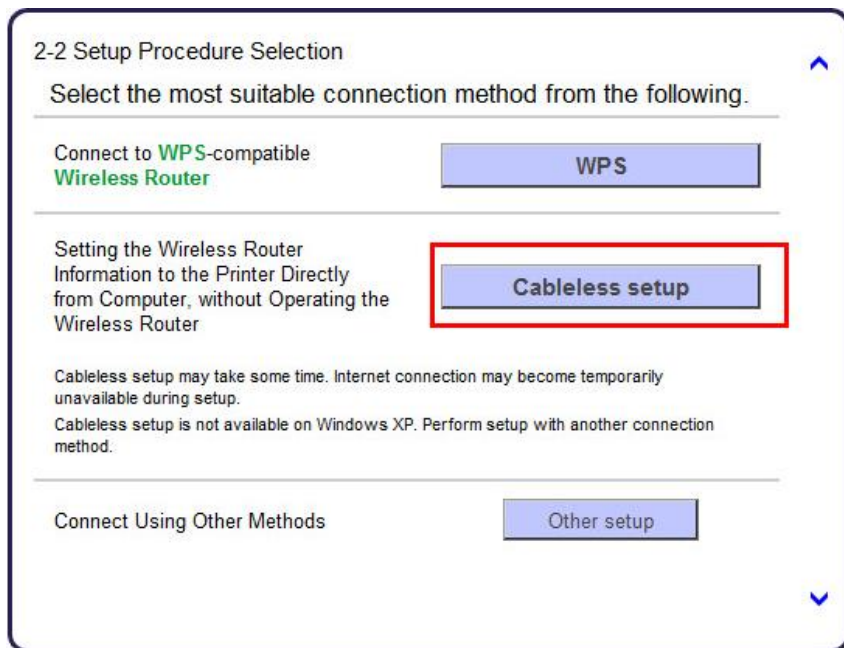
<div style="border: 1px solid black; padding: 5px; width: fit-content; margin: 0 auto;">Press WPS button of the</div> <p><a href="#">Push Button Method</a></p> <p>If the Push Button Method screen is displayed on the printer but you are unsure if your wireless router supports this technology, press the <b>Stop</b> button.</p> <p>When the printer screen changes from left to right, click <a href="#">here</a>.</p>	<div style="border: 1px solid black; padding: 5px; width: fit-content; margin: 0 auto;">Wireless LAN setup Standard setup ▶</div> <div style="border: 2px solid red; padding: 5px; width: fit-content; margin: 0 auto;"><a href="#">Other Methods</a></div> <p><b>WPS</b> or <b>Cableless setup</b> can be selected in the next step.</p> <p>If your wireless router supports <b>WPS</b>, you can perform WPS setup, even if the <b>Wireless LAN setup</b> screen is displayed.</p>
---	---

▼

# Connecting to the Network

Continue to follow on-screen instructions.

Select **Cableless setup** on the **Setup Procedure Selection** screen (2-2).

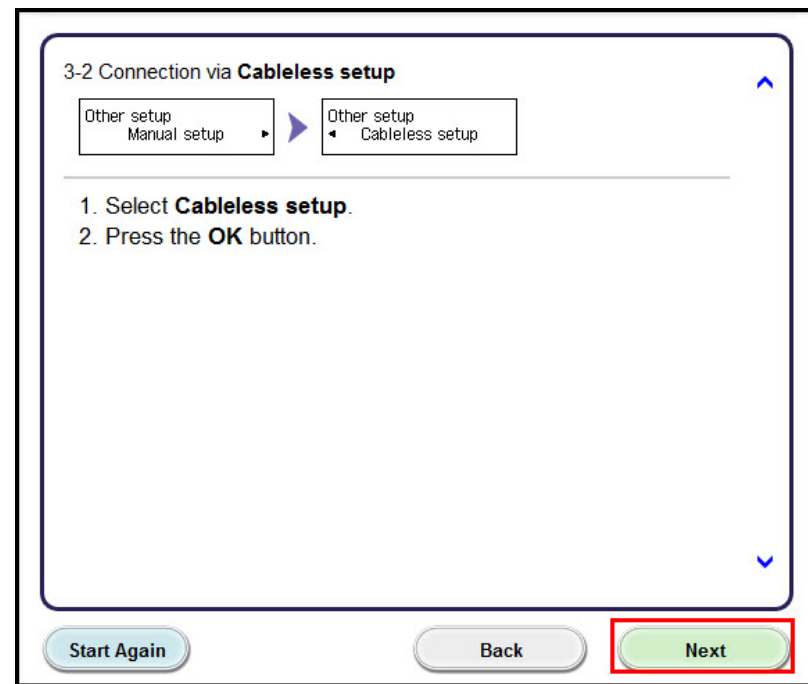
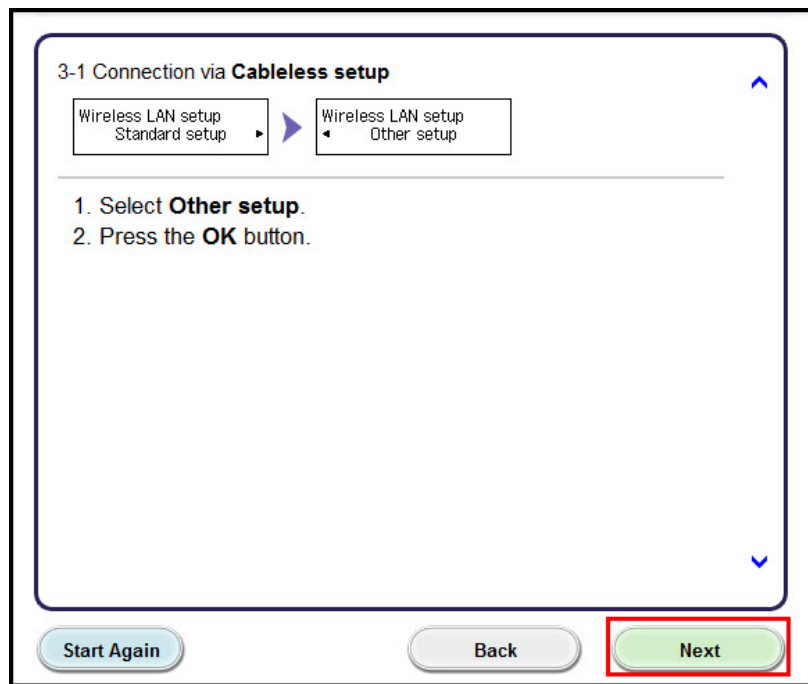


If the Install .NET Framework screen appears, Click Yes



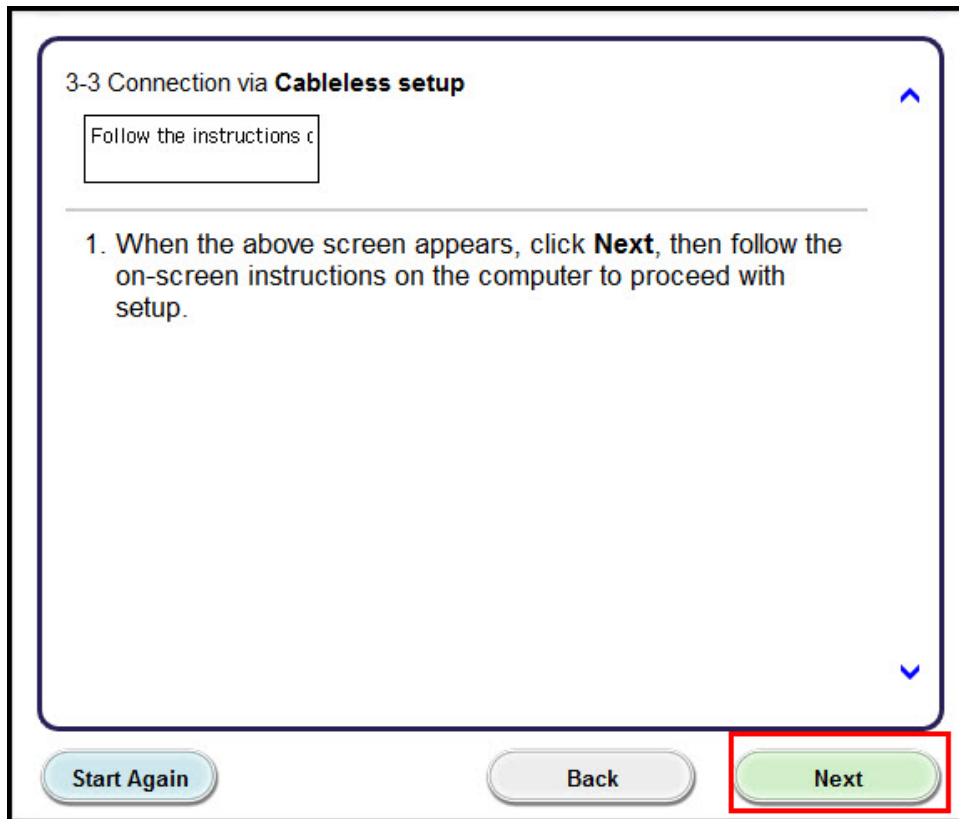
# Connecting to the Network

Carefully follow the instructions on the **Connection via Cableless setup** screens 3-1 and 3-2 to select **Cableless setup** on your printer. Click **Next** after completing each step.



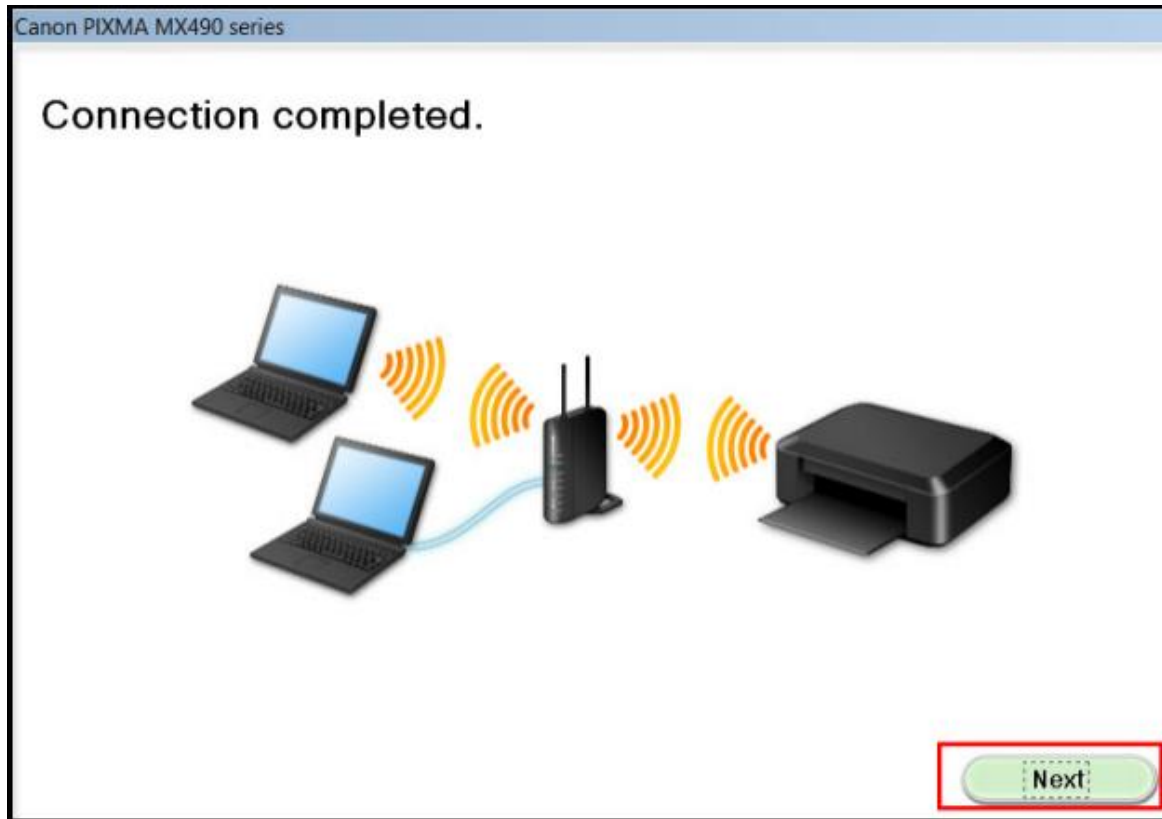
# Connecting to the Network

When the printer displays “**Follow the instructions on the PC or smartphone, etc.**”, click **Next** on the **Connection via Cableless setup** screen. (3-3).



# Connecting to the Network

Click **Next** on the **Connection completed** screen.

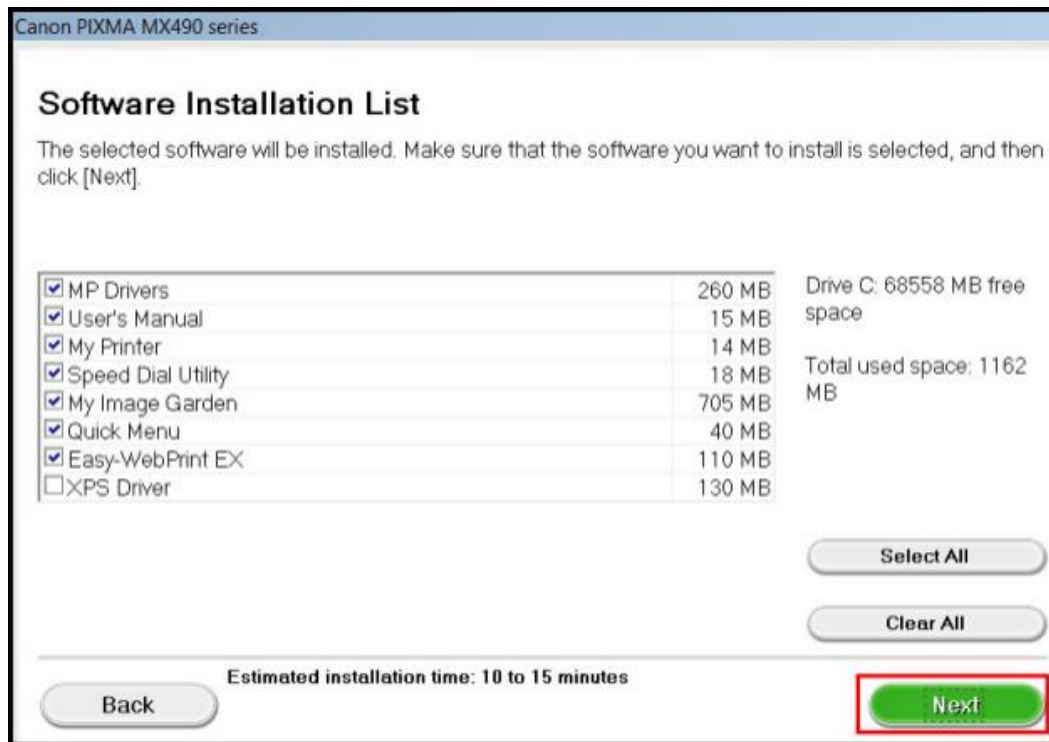




# Installing the Drivers & Software

Continue following on-screen instructions. On the **Software Installation List**, select \*software to install and click **Next**.

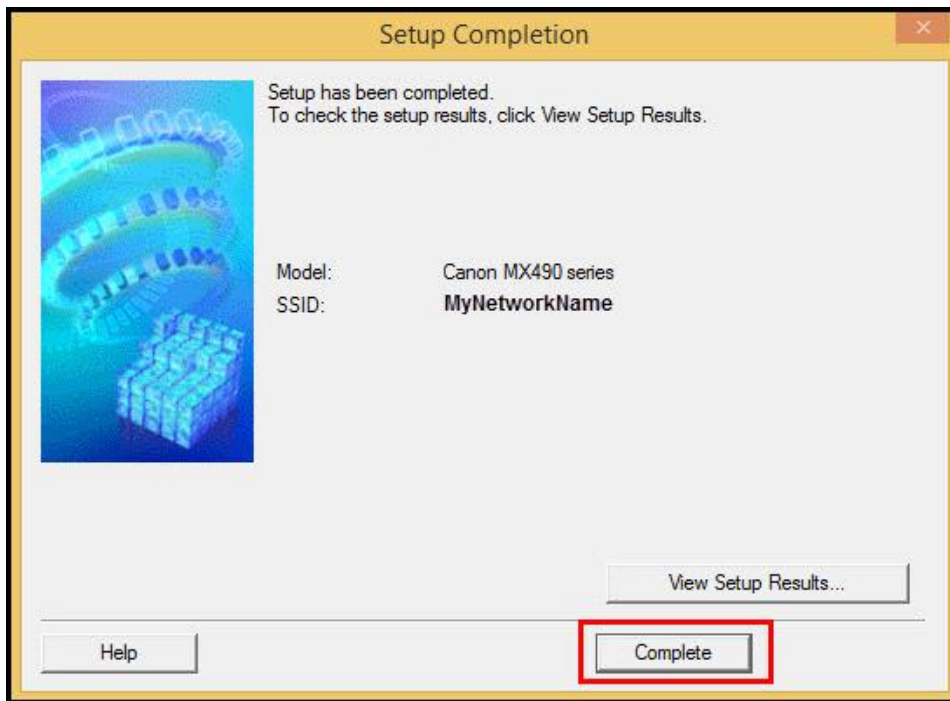
\***MP Drivers** is required and cannot be deselected. We recommend installing **My Image Garden** and **Quick Menu** to take full advantage of the printer's features.



# Setup Completion

Continue following on-screen instructions.

When the **Setup Completion** dialog box appears, click **Complete**.



At this point, setup of the printer and network is complete. Continue to follow any remaining on-screen instructions to finish and exit the setup program.

## Free Manuals Download Website

<http://myh66.com>

<http://usermanuals.us>

<http://www.somanuals.com>

<http://www.4manuals.cc>

<http://www.manual-lib.com>

<http://www.404manual.com>

<http://www.luxmanual.com>

<http://aubethermostatmanual.com>

Golf course search by state

<http://golfingnear.com>

Email search by domain

<http://emailbydomain.com>

Auto manuals search

<http://auto.somanuals.com>

TV manuals search

<http://tv.somanuals.com>