



QUICK START GUIDE



Cisco ASA 5500-X Series

ASA 5512-X, ASA 5515-X, ASA 5525-X, ASA 5545-X, and ASA 5555-X

- 1** Verifying the Package Contents
- 2** Powering On the ASA
- 3** Connecting Interface Cables and Verifying Connectivity
- 4** Launching ASDM
- 5** Running the Startup Wizard
- 6** (Optional) Allowing Access to Public Servers Behind the ASA
- 7** (Optional) Running VPN Wizards
- 8** (Optional) Running Other Wizards in ASDM
- 9** Advanced Configuration

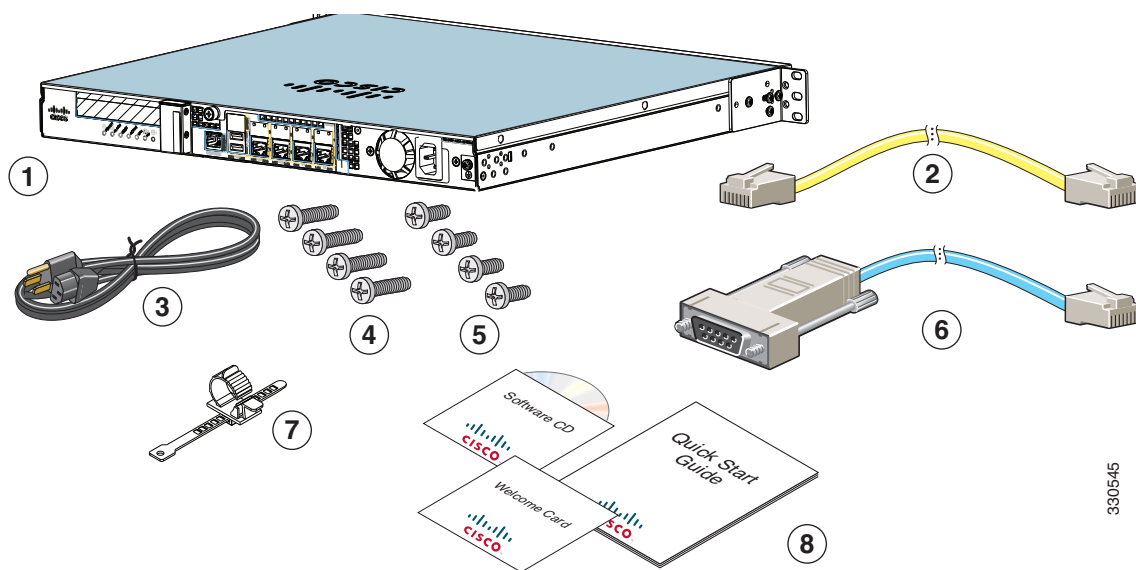
Regulatory Compliance and Safety Information

Read the safety warnings in the Regulatory Compliance and Safety Information (RCSI), and follow proper safety procedures when performing the steps in this guide. See <http://www.cisco.com/go/asadocs> for links to the RCSI and other documents.

1 Verifying the Package Contents

Verify the contents of the packing box to ensure that you have received all items necessary to install your ASA.

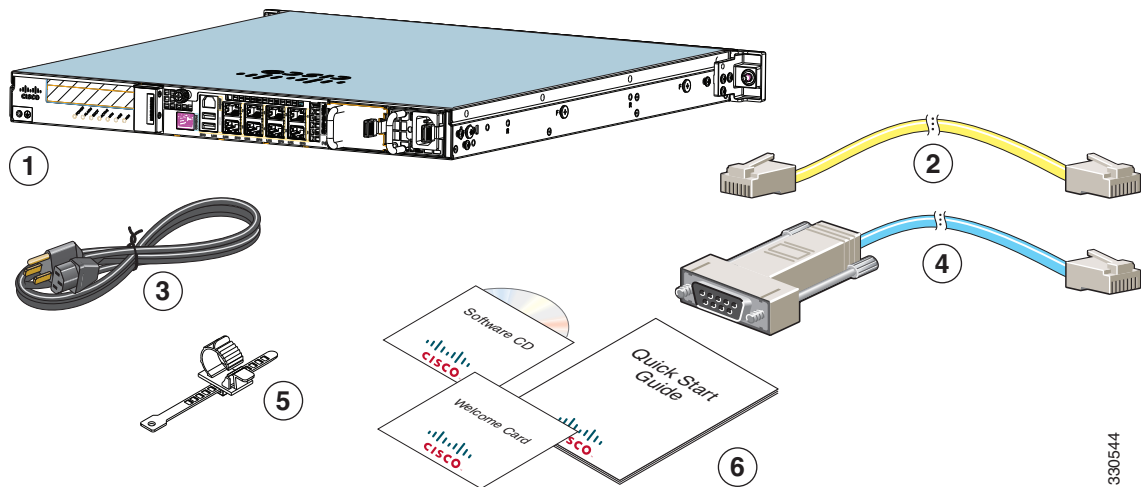
ASA 5512-X, ASA 5515-X, or ASA 5525-X



330545

1	ASA 5512-X, ASA 5515-X, or ASA 5525-X Chassis	2	Yellow Ethernet Cable
3	Power Cord	4	4 10-32 Phillips Screws
5	4 12-24 Phillips Screws	6	Blue Console Cable PC Terminal Adapter
7	Power Cord Retainer	8	Documentation and Software CD

ASA 5545-X and ASA 5555-X



330544

1	ASA 5545-X or ASA 5555-X Chassis (one power supply shown)	2	Yellow Ethernet Cable
3	Power Cord	4	Blue Console Cable PC Terminal Adapter
5	Power Cord Retainer	6	Documentation and Software CD
Not shown: Slide Rail Kit			

2 Powering On the ASA

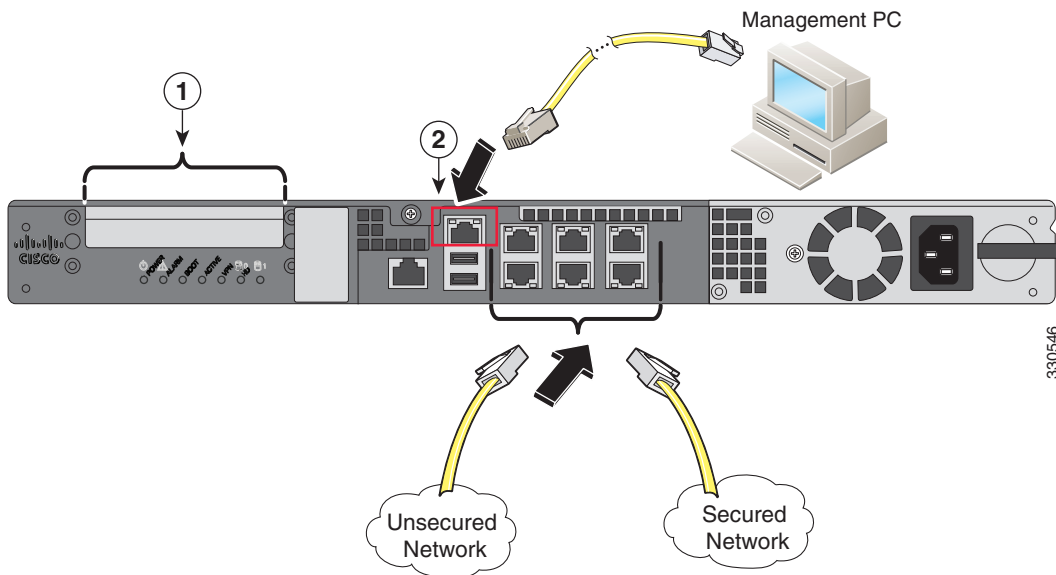
- Step 1** Attach the power cable to the ASA and connect it to an electrical outlet.
 - Step 2** Power on the ASA.
 - Step 3** Check the Power LED on the front of the ASA; if it is solid green, the device is powered on.
 - Step 4** Check the Status LED on the front of the ASA; after it is solid green, the system has passed power-on diagnostics.
-

3 Connecting Interface Cables and Verifying Connectivity

Step 1 Connect a management PC to the Management 0/0 interface for use with the Adaptive Security Device Manager (ASDM). You can connect the PC directly with an Ethernet cable, or connect the PC and the ASA to the same management network. Make sure the PC is configured to obtain an IP address using DHCP.

If you want to use the CLI, connect your PC to the console port, and see the CLI configuration guide for more information.

Step 2 Connect your networks to the appropriate ports.



1 (Optional) I/O Card. If you have a fiber I/O card, you need to use SFP modules (not included). See the hardware installation guide for information.	2 Management 0/0 interface (RJ-45)
--	---

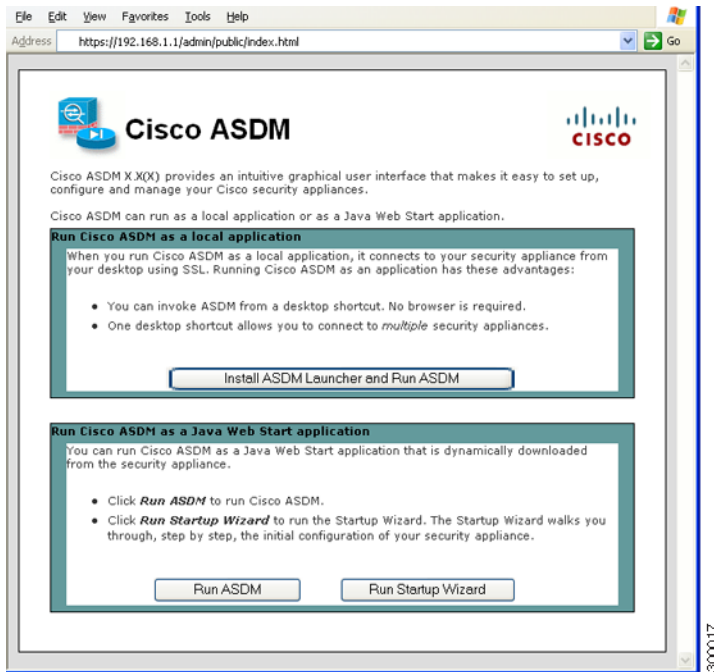
Step 3 Check the LINK/ACT indicators to verify interface connectivity.

4 Launching ASDM

The ASA ships with a default configuration that enables ASDM connectivity to the Management 0/0 interface. Using ASDM, you can use wizards to configure basic and advanced features. ASDM is a graphical user interface that allows you to manage the ASA from any location by using a web browser. See the ASDM release notes on Cisco.com for the requirements to run ASDM.

Step 1 On the PC connected to the ASA, launch a web browser.

Step 2 In the Address field, enter the following URL: **https://192.168.1.1/admin**. The Cisco ASDM web page appears.



Step 3 Click **Run Startup Wizard**.

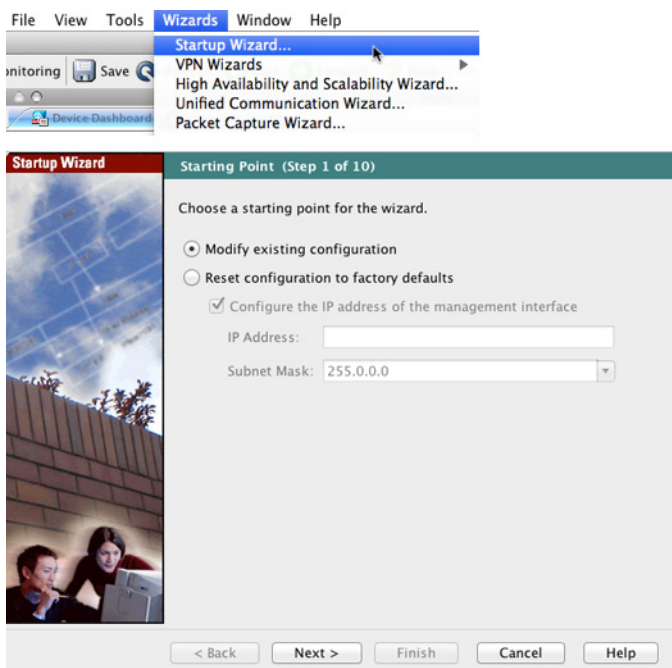
Step 4 Accept any certificates according to the dialog boxes that appear. The Cisco ASDM-IDM Launcher appears.

Step 5 Leave the username and password fields empty, and click **OK**. The main ASDM window appears and the Startup Wizard opens.

5 Running the Startup Wizard

Run the **Startup Wizard** to modify the default configuration so that you can customize the security policy to suit your deployment. Using the startup wizard, you can set the following:

- Hostname
- Domain name
- Administrative passwords
- Interfaces
- IP addresses
- Static routes
- DHCP server
- Network address translation rules
- and more...



-
- Step 1** If the wizard is not already running, in the main ASDM window, choose **Wizards > Startup Wizard**.
- Step 2** Follow the instructions in the Startup Wizard to configure your ASA.
- Step 3** While running the wizard, you can accept the default settings or change them as required. (For information about any wizard field, click **Help**.)
-

6 (Optional) Allowing Access to Public Servers Behind the ASA

The Public Server pane automatically configures the security policy to make an inside server accessible from the Internet. As a business owner, you might have internal network services, such as a web and FTP server, that need to be available to an outside user. You can place these services on a separate network behind the ASA, called a demilitarized zone (DMZ). By placing the public servers on the DMZ, any attacks launched against the public servers do not affect your inside networks.

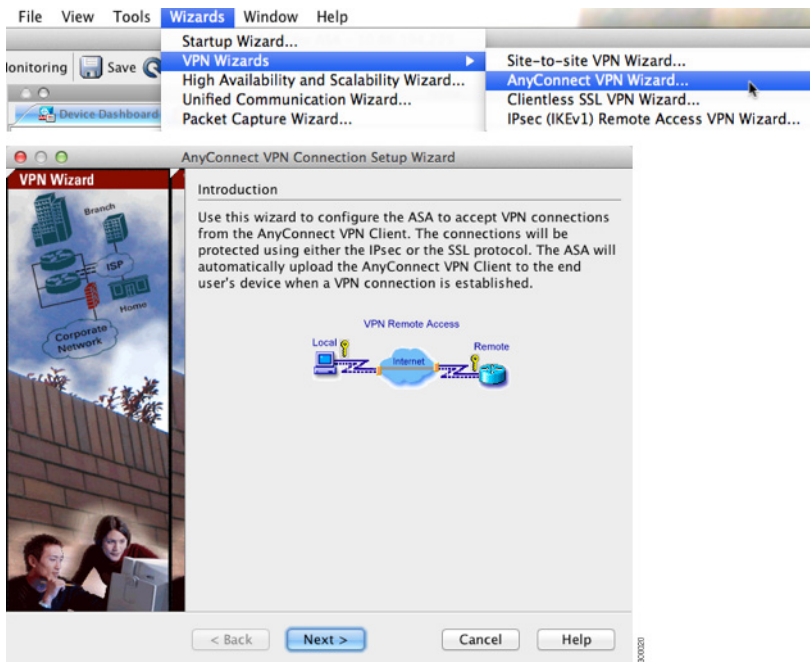


-
- Step 1** In the main ASDM window, choose **Configuration > Firewall > Public Servers**. The Public Server pane appears.
 - Step 2** Click **Add**, then enter the public server settings in the Add Public Server dialog box. (For information about any field, click **Help**.)
 - Step 3** Click **OK**. The server appears in the list.
 - Step 4** Click **Apply** to submit the configuration to the ASA.
-

7 (Optional) Running VPN Wizards

You can configure VPN using the following wizards:

- **Site-to-Site VPN Wizard**—Creates an IPsec site-to-site tunnel between two ASAs.
- **AnyConnect VPN Wizard**—Configures SSL VPN remote access for the Cisco AnyConnect VPN client. AnyConnect provides secure SSL connections to the ASA for remote users with full VPN tunneling to corporate resources. The ASA policy can be configured to download the AnyConnect client to remote users when they initially connect via a browser. With AnyConnect 3.0 and later, the client can run either the SSL or IPsec IKEv2 VPN protocol.
- **Clientless SSL VPN Wizard**—Configures clientless SSL VPN remote access for a browser. Clientless, browser-based SSL VPN lets users establish a secure, remote-access VPN tunnel to the ASA using a web browser. After authentication, users access a portal page and can access specific, supported internal resources. The network administrator provides access to resources by users on a group basis. ACLs can be applied to restrict or allow access to specific corporate resources.
- **IPsec (IKEv1) Remote Access VPN Wizard**—Configures IPsec VPN remote access for the Cisco IPsec client.



Step 1 In the main ASDM window, choose **Wizards > VPN Wizards**, then choose one of the following:

- Site-to-Site VPN Wizard
- AnyConnect VPN Wizard
- Clientless VPN Wizard
- IPsec (IKEv1) Remote Access VPN Wizard

Step 2 Follow the wizard instructions. (For information about any wizard field, click **Help**.)

8 (Optional) Running Other Wizards in ASDM

You can optionally run the following additional wizards in ASDM:

- **High Availability and Scalability Wizard**
Configure active/active or active/standby failover, or VPN cluster load balancing.
- **Unified Communications Wizard**
Configure a proxy on the ASA for remote access or business-to-business communications. (Special licenses may apply. See the CLI configuration guide for information about ASA licensing.)
- **Packet Capture Wizard**
Configure and run packet capture. The wizard will run one packet capture on each of the ingress and egress interfaces. After capturing packets, you can save the packet captures to your PC for examination and replay in the packet analyzer.

9 Advanced Configuration

To continue configuring your ASA, see the documents available for your software version at: <http://www.cisco.com/go/asadocs>



Americas Headquarters
Cisco Systems, Inc.
San Jose, CA

Asia Pacific Headquarters
Cisco Systems (USA) Pte. Ltd.
Singapore

Europe Headquarters
Cisco Systems International BV Amsterdam,
The Netherlands

Cisco has more than 200 offices worldwide. Addresses, phone numbers, and fax numbers are listed on the Cisco Website at www.cisco.com/go/offices.

Cisco and the Cisco logo are trademarks or registered trademarks of Cisco and/or its affiliates in the U.S. and other countries. To view a list of Cisco trademarks, go to this URL: www.cisco.com/go/trademarks. Third-party trademarks mentioned are the property of their respective owners. The use of the word partner does not imply a partnership relationship between Cisco and any other company. (1110R)

© 2011 Cisco Systems, Inc. All rights reserved.

Printed in the USA on recycled paper containing 10% postconsumer waste.

78-20618-01

Free Manuals Download Website

<http://myh66.com>

<http://usermanuals.us>

<http://www.somanuals.com>

<http://www.4manuals.cc>

<http://www.manual-lib.com>

<http://www.404manual.com>

<http://www.luxmanual.com>

<http://aubethermostatmanual.com>

Golf course search by state

<http://golfingnear.com>

Email search by domain

<http://emailbydomain.com>

Auto manuals search

<http://auto.somanuals.com>

TV manuals search

<http://tv.somanuals.com>