



CATC

**Color Audioaccess®
Touchscreen Controller**



The Audioaccess CATC is a stylish color touchscreen controller that provides a rich user interface for Audioaccess PX-700-based systems. The touchscreen incorporates a wide range of advanced source control features, yet embodies the classic Audioaccess reputation for ease of use. The CATC also manages other home devices using optional interface modules, handling everything from simple one-way lighting control to providing feedback from entertainment sources such as music hard disc servers and CD/DVD libraries.

Control Capabilities

Like our famous eight-button keypad, the CATC controls basic audio functions such as power, source control and volume, while offering advanced control functions for all A/V components. Template screens are provided in our EasyTouch II application to simplify programming and user control. Additional screens may be created to customize the user interface.

The built-in "Librarian" offers text control of high-capacity sources such as satellite receivers and CD and hard disc library sources. It displays text on-screen to allow access to a specific station or disc. Options include retrieving text feedback from sources such as hard disc music servers, thus providing full two-way feedback from these library-based sources.

In addition to controlling the audio/video sources of the Audioaccess system, the CATC uses its multiple control ports for integration with RS-232-controlled subsystems such as lighting and HVAC. Via connection of optional one-way or the two-way RS-232 interface modules, any CATC touchscreen within a system may control a device connected to a system touchscreen. The CATC allows access to timer functions, such as a "Wake Up" event to "Turn On" or "Turn Off" any room of the home. A "Rooms" screen allows a touchscreen in the kitchen to control another room in the house; activate the dining room, or set up a music source outside on the patio before leaving the interior of the home.

Standard Operation

The colorful user interface is both fun and intuitive to use. The touchscreen includes a series of programmable screens with touch-sensitive areas that are indicated by a combination of buttons, icons and any imported graphics.

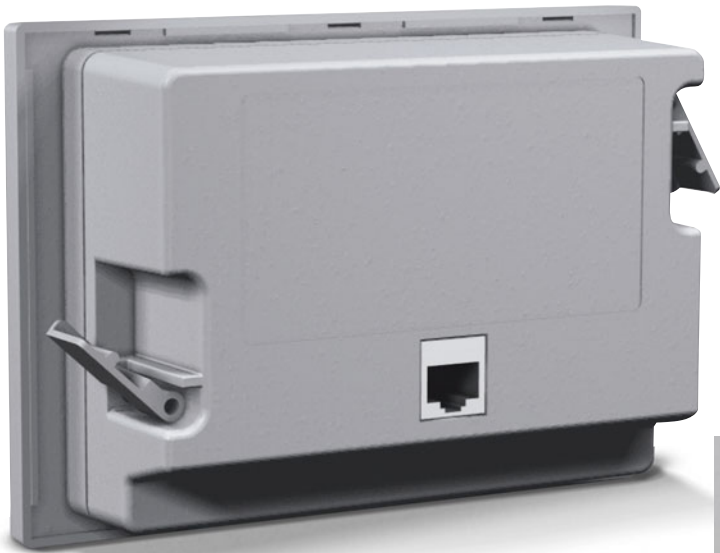
On-screen text messages are employed for the "Rooms" feature, which informs the user as to what room outside of the touchscreen location is being controlled. Text messages are also used for the built-in library manager and for use as feedback messages from sources that provide song, artist and title information to the touchscreens.

Programming Screens

Programming ease is a major facet of the CATC design. A built-in library of preprogrammed buttons is supplied with our EasyTouch II application. EasyTouch II allows drag and drop of actions and buttons from a library into the programming screens. Buttons are easily relabeled.

www.audioaccess.com





The touchscreen mounts in a wall opening using the built-in wing clamps. It may be used with or without the optional metal mounting kit.

Note: A standard US three-gang back box does not fit the CATC.



The front bezel can be removed for programming and touchscreen resetting, and to adjust the termination switch without the need to remove the unit from the wall. Optional bezels in Black, Ivory, White or Almond may be purchased separately to replace the standard white bezel.

Features

- ▲ Exclusive, built-in text-based Librarian function controls high-capacity sources by selecting genre, artist and title of disc, station or channel
- ▲ Controls separate RS-232-based residential (sub) system like lighting, security or HVAC
- ▲ Built-in templates for basic and expanded control of PX-700 multiroom system with eight sources, library functions, zone selection and scheduled events
- ▲ Create your own screens, import bitmaps or use additional templates available to customize any system
- ▲ Screens, navigation and actions are fully programmable using EasyTouch II application (Windows®-based)
- ▲ Real-time clock and event scheduler for programmable events
- ▲ Four mechanical, dedicated function buttons (On/Off, Volume Up, Volume Down and Volume Mute)
- ▲ IR receiver works with Audioaccess remotes
- ▲ Firmware is upgradeable by downloading, using RS-232 port
- ▲ The outside dimensions of bezel match the size of standard U.S. three-gang wall plate
- ▲ CATC mounts to any wall surface, tabletop enclosure or other suitable flat surface
- ▲ Custom metal mounting kit and custom metal back box available separately, for use in new construction or retrofit
- ▲ RS-232 interface board available separately
- ▲ Intelligent RS-232 interface for bi-directional communication and feedback available separately
- ▲ Ambient light sensor automatically dims backlight

Specifications

- ▲ 320 X 240 Color LCD with CCFL backlighting and integral touchscreen
- ▲ 32-bit, 92Mhz RISC processor
- ▲ 1MB Flash program memory
- ▲ 4MB Flash data memory
- ▲ RS-485 for control of Audioaccess products
- ▲ RS-485 port for future use
- ▲ Bi-directional RS-232 (under bezel) for programming
- ▲ Transmit only RS-232 port for subsystem control
- ▲ RJ-45 connector for power and data

Dimensions

- ▲ Bezel: 6-3/8" W x 4-1/2" H x 5/16" D (162mm X 114mm x 8mm)
- ▲ Mounting depth from wall surface: 1-3/4" (45mm) without cable
- ▲ Wall cutout: 5-1/2" W x 4-1/16" H (140mm x 104mm)

Wiring Information

- ▲ Four pair, 24 AWG (CAT5) up to approximately 250 feet (2 pairs required for RS-485 bus and power; 1 pair required for transmit-only RS-232; 1 pair required for future use)
- ▲ RJ-45 connectors used for termination

Audioaccess
 250 Crossways Park Drive
 Woodbury, NY 11797
 www.audioaccess.com
 516.496.3400
 Fax: 516.682.3510

©2004 Harman International Industries, Incorporated
 Part No. AACATCP16/04
 A Harman International Company

Free Manuals Download Website

<http://myh66.com>

<http://usermanuals.us>

<http://www.somanuals.com>

<http://www.4manuals.cc>

<http://www.manual-lib.com>

<http://www.404manual.com>

<http://www.luxmanual.com>

<http://aubethermostatmanual.com>

Golf course search by state

<http://golfingnear.com>

Email search by domain

<http://emailbydomain.com>

Auto manuals search

<http://auto.somanuals.com>

TV manuals search

<http://tv.somanuals.com>