

WIRELESS BROADBAND ROUTER

A02-RB-W54



QUICK START GUIDE

A02-RB-W54_GE01

ITALIANO

Questo prodotto è coperto da garanzia Atlantis Land **Fast Swap** della durata di 3 anni. Per maggiori dettagli in merito o per accedere alla documentazione completa in Italiano fare riferimento al sito www.atlantis-land.com.

ENGLISH

This product is covered by Atlantis Land 3 years **Fast Swap** warranty. For more detailed informations please refer to the web site www.atlantis-land.com.

For more detailed instructions on configuring and using this device, please refer to the online manual.

FRANCAIS

Ce produit est couvert par une garantie Atlantis Land **Fast Swap** de 3 ans. Pour des informations plus détaillées, référez-vous svp au site Web www.atlantis-land.com.

DEUTSCH

Dieses Produkt ist durch die Atlantis Land 3 Jahre **Fast Swap** Garantie gedeckt. Für weitere Informationen, beziehen Sie sich bitte auf Web Site www.atlantis-land.com.

ESPAÑOL

Este producto está cubierto de garantía Atlantis Land **Fast Swap** por 3 años. Para una información más detallada, se refiera por favor al Web site www.atlantis-land.com.

The award of the information is facultative, but its lack will prevent ATLANTIS LAND[®] from starting the Guarantee process requested.



Register your product!

www.atlantis-land.com

Registration on the web site **www.atlantis-land.com** within 15 days from the purchase of the product dismiss the customer from showing a valid proof of purchase (Sale Receipt or Invoice) in case of the request of intervention. For further information we invite you to look at our web site at the section WARRANTY.

Copyright

The Atlantis Land logo is a registered trademark of Atlantis Land SpA. All other names mentioned may be trademarks or registered trademarks of their respective owners. Subject to change without notice. No liability for technical errors and/or omissions.



INDEX

1.1 Package contents	5
1.2 The Front Panel LEDs	5
1.3 The Rear Ports	6
1.4 Cabling	7
1.5 Default Settings.....	8
1.6 IE Configuration	10
1.7 TCP/IP Configuration	10
Configuring PC (Windows 95/98/ME)	10
Configuring PC (Windows NT4.0).....	11
Configuring PC (Windows 2000).....	11
Configuring PC (WindowsXP).....	11
1.8 Browser configuration	14
Quick Wizard Setup	14

A02-RB-W54_GE01(V1.0 July 2005)



Wireless Broadband Router

For more detailed instructions on configuring and using the Wireless Broadband Router, please refer to the online manual.

1.1 Package contents

Atlantis Land Wireless Broadband Router, CD-ROM with manual, Quick Start Guide, External 2 dBi Antenna, cable CAT-5 LAN, Power Adapter AC-DC (5V, 2.4A).

1.2 The Front Panel LEDs



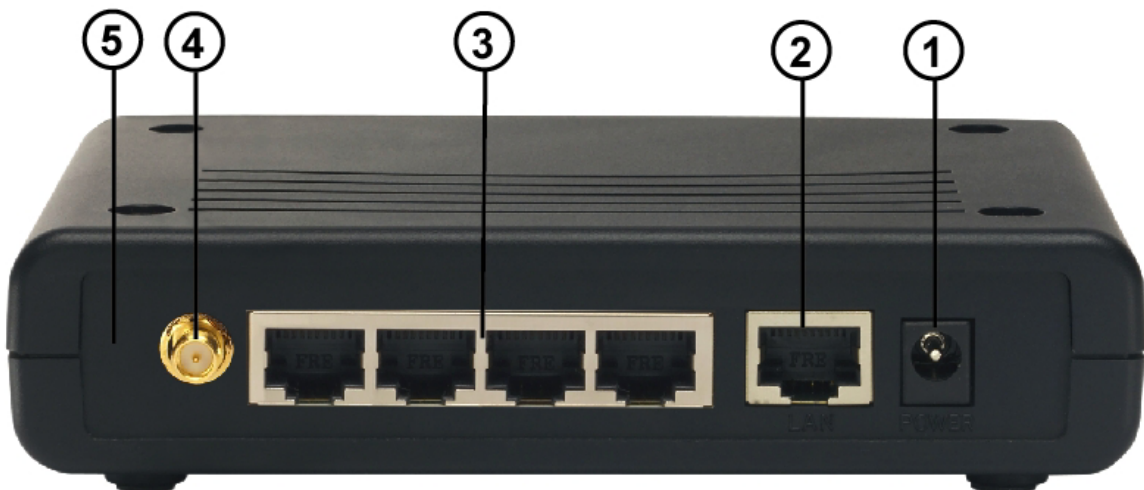
LED	MEANING
POWER	This indicator lights green when the hub is receives power, otherwise it is off.
STATUS	This indicator blinks green means the Internet Broadband Router is working successful. Otherwise, this indicator always on or off means the function of the Internet Broadband Router is fail.
WAN	The indicators light green when the WAN port was connected to an xDSL/Cable modem successfully.



Wireless Broadband Router

	The indicators blink green while the WAN port was transmitting or receiving data on the xDSL/Cable modem.
WLAN	This indicator lights green when there are wireless devices connected and transmitting data to the Wireless Router.
LAN	These indicators light green when the LAN ports were connected successfully. These indicators blink green while the LAN ports were transmitting data.

1.3 The Rear Ports



PORT	MEANING
POWER Jack(1)	Connect the supplied power adapter to this jack.
WAN(2)	Connect an UTP Ethernet cable to one of the four LAN ports when connecting to a PC or an office/home network of 10Mbps or



Wireless Broadband Router

	100Mbps.
LAN(3)	Connect an UTP Ethernet cable to one of the four LAN ports when connecting to a PC or an office/home network of 10Mbps or 100Mbps.
Reverse SMA(4)	There is one 2dBi Gain Antenna in the rear panel for wireless connection.
Reset(5)	After the device has turned on, press it to reset the device or restore to factory default settings. Use a pin-shape item to push to reset this device to factory default settings. It will be useful too when the manager forgot the password to login, but the setting will be back to default setting.

1.4 Cabling

Plug in one end of the network cable to the WAN port of the Wireless Internet Broadband Router.

Plug in the other end of the network cable to the Ethernet port of the xDSL or Cable modem (E.G A02-RA141 or A02-RA111).

Use another network cable to connect to the Ethernet card on the computer system; the other end of the cable connects to the LAN port of the Internet Broadband Router. Since the Wireless Broadband Router has four ports, you can connect up to four computers directly to the unit. There you do not have to buy a switch to connect these computers since one

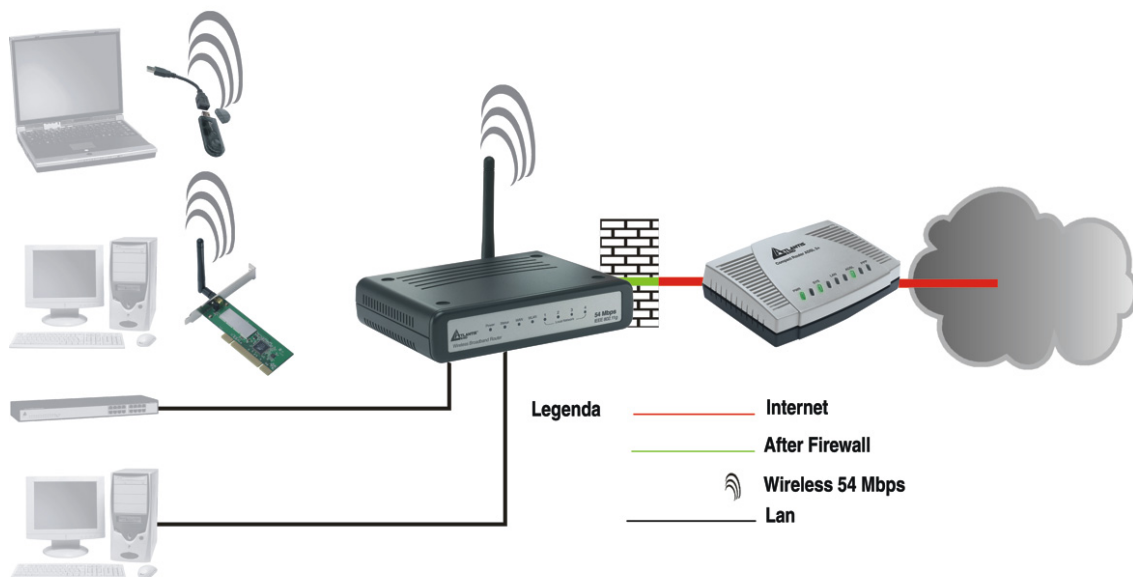


Wireless Broadband Router

Internet Broadband Router functions both as a connection-sharing unit and as a switch.

The control LEDs of the Wireless Internet Broadband Router are clearly visible and the status of the network link can be seen instantly:

1. With the power source on, once the device is connected to the broadband modem, the Power, LAN, WLAN and WAN port link LEDs of the Internet Broadband Router will light up indicating a normal status. Led Status blinks.
2. While the WAN is link up to the ADSL/Cable modem, the WAN port's Link/ACT LED will light up.
3. While the LAN is link up to the computer system, the LAN port's Link/ACT LED will light up.



1.5 Default Settings

The Wireless Broadband Router can be configured with your Web browser. The web browser is included as a standard application in following operation systems, UNIX, Linux, Mac



Wireless Broadband Router

OS, Windows 95/98/NT/2000/Me, etc. The product provides a very easy and user-friendly interface for configuration.

Before Configuration

This section describes the configuration required by LAN-attached PCs that communicate with the Wireless Broadband Router, either to configure the device, or for network access. These PCs must have an Ethernet interface installed properly, be connected to the Wireless Broadband Router either directly or through an external Switch, and have TCP/IP installed and configured to obtain an IP address through a DHCP server or a fixed IP address that must be in the same subnet of the Wireless Broadband Router. The default IP address of the Wireless Broadband Router is **192.168.1.1** and subnet mask is **255.255.255.0**. The best and easy way is to configure the PC to get an IP address from the Wireless Broadband Router (DHCP client).

Please follow the steps below for PC's network environment installation. First of all, please check your PC's network components. The TCP/IP protocol stack and Ethernet network adapter must be installed. If not, please refer to MS Windows relative manuals.

Before you configure this Wireless Broadband Router, you need to know the following default settings:

- Username:**admin**
- Password:**admin**
- IP LAN address: **(192.168.1.1), Subnet Mask (255.255.255.0)**
- IP WAN address:**dhcp client**
- DHCP Server: **enable (192.168.1.100-192.168.1.199)**
- SSSID= **default**, Channel=**6**, WEP/WAP=**disable**



1.6 IE Configuration

Now open IE, go to **Instruments** menu, select the **Connections** tab and select one of the following options:

- Never use remote connection
- Use remote connection if another network connection isn't available

1.7 TCP/IP Configuration

Configuring PC (Windows 95/98/ME)

1. Go to **Start / Settings / Control Panel**. In the Control Panel, double-click on **Network** and choose the **Configuration** tab.
2. Select **TCP / IP -> NIC Compatible**, or the name of any Network Interface Card (NIC) in your PC.
3. Click **Properties**.
4. Select the **IP Address** tab. In this page, click the **Obtain an IP address automatically** radio button.
5. Then select the **DNS Configuration** tab.
6. Select the **Disable DNS** radio button and click **“OK”** to finish the configuration.



Configuring PC (Windows NT4.0)

1. Go to **Start / Settings / Control Panel**. In the Control Panel, double-click on **Network** and choose the **Protocols** tab.
2. Select **TCP/IP Protocol** and click **Properties**.
3. Select the **Obtain an IP address from a DHCP server** radio button and click **OK**.

Configuring PC (Windows 2000)

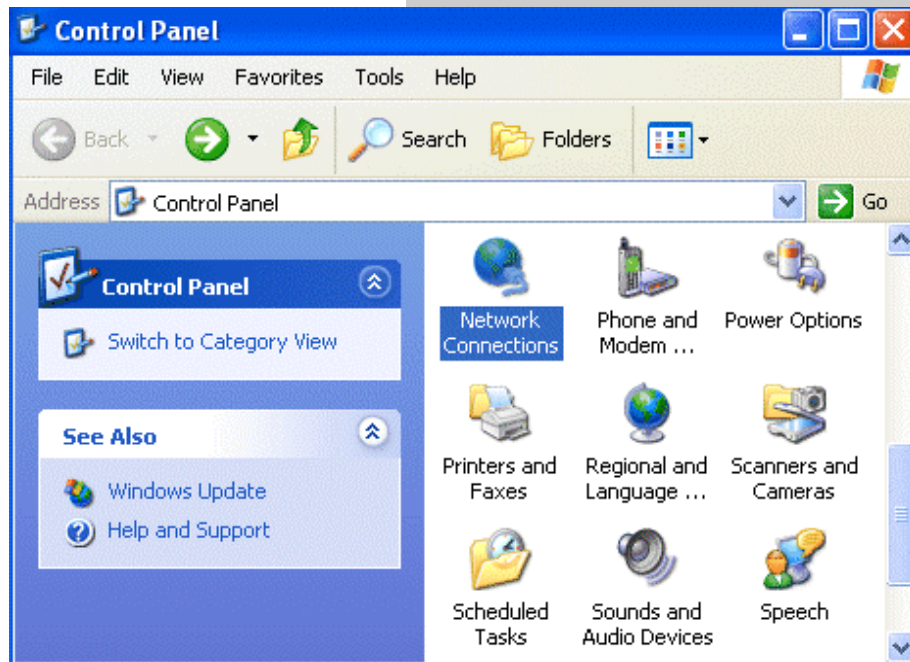
1. Go to **Start / Settings / Control Panel**. In the Control Panel, double-click on **Network and Dial-up Connections**.
2. Double-click **LAN Area Connection**.
3. In the **LAN Area Connection Status** window, click **Properties**.
4. Select **Internet Protocol (TCP/IP)** and click **Properties**.
5. Select the **Obtain an IP address automatically** and the **Obtain DNS server address automatically** radio buttons.
6. Click **OK** to finish the configuration.

Configuring PC (WindowsXP)

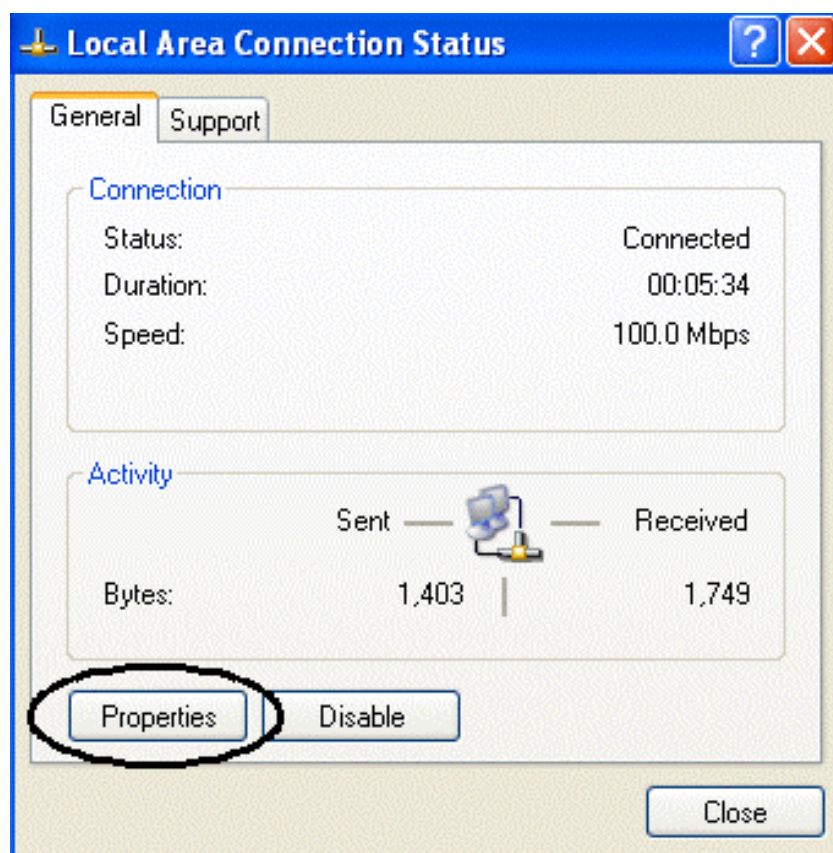
1. Go to **Start / Control Panel (in Classic View)**. In the Control Panel, double-click on **Network Connections**.
2. Double-click **Local Area Connection**.



Wireless Broadband Router



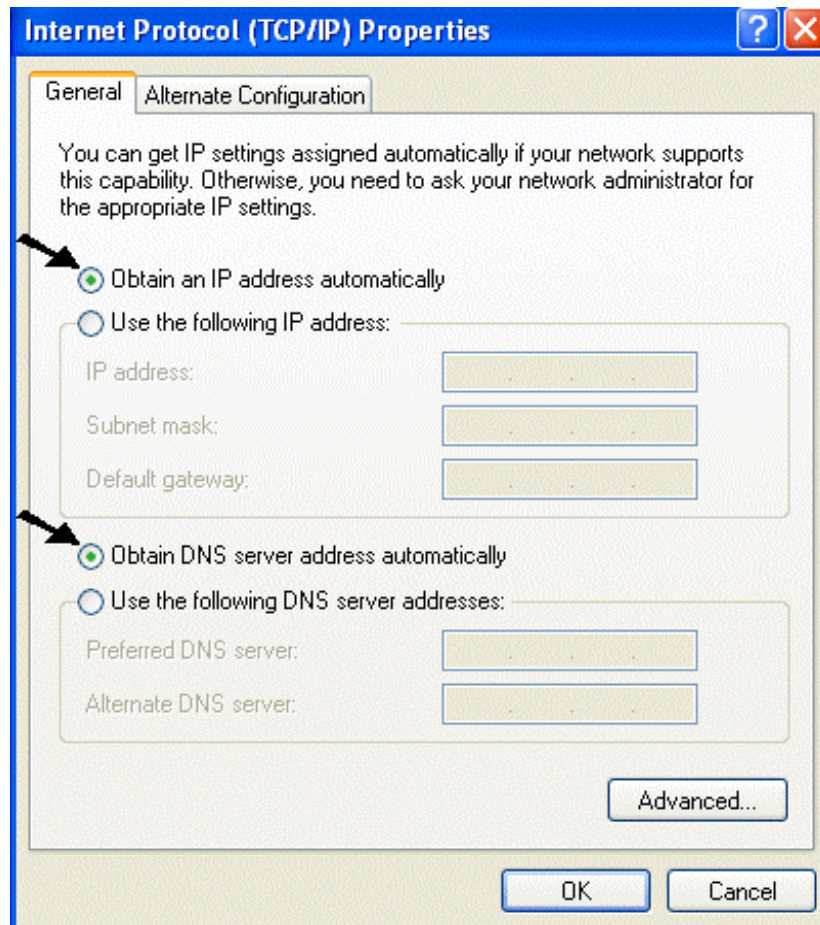
3. In the **LAN Area Connection Status** window, click **Properties**.





Wireless Broadband Router

4. Select **Internet Protocol (TCP/IP)** and click **Properties**.
5. Select the **Obtain an IP address automatically** and the **Obtain DNS server address automatically** radio buttons.



6. Click **OK** to finish the configuration



Wireless Broadband Router

1.8 Browser configuration

Open the web browser, enter the local port IP address of this Wireless Broadband Router, which default at **192.168.1.1**, and click “**Go**” to get the login page.



The default username is **admin**, password **admin** and click “**OK**” to continue. Click on the desired item to expand the page with all settings in the main navigation panel.

Following next steps you can make operating Wireless Broadband Router in short time using PCs in DHCP mode. Refer to manual on Installation CD if you need personalized configuration.

Setup wizard is provided as the part of the web configuration utility. You can simply follow the step-by-step process to get your wireless router configuration ready to run in 6 easy steps by clicking on the “**Wizard**” button on the function menu.

Quick Wizard Setup

The following screen will appear. Please click “**Next**” to continue.



Wireless Broadband Router

Welcome to Router Setup Wizard

Step 1. Set your new password
Step 2. Choose your time zone
Step 3. Set LAN connection and DHCP server
Step 4. Set internet connection
Step 5. Set wireless LAN connection
Step 6. Restart

display wizard next time? Yes No

Step 1: Set Password

You can change the password as you like and then click "**Next**" to continue.

Welcome to Router Setup Wizard

Set Password

Password

Verify Password

Step2: Chose Time Zone

Select your time zone from the drop down list. Please click "**Next**" to continue.



>>>> **Welcome to Router Setup Wizard**

Choose Time Zone

(GMT) Dublin, Edinburgh, Lisbon, London

< Back Next > Exit

Step 3: Set LAN & DHCP Server

Set your IP address and mask. The default IP is **192.168.1.1**. If you like to enable DHCP, please click "**Enabled**". DHCP enabled is able to automatically assign IP addresses. Please assign the range of IP addresses in the fields of "**Range start**" and "**Range end**". Please click "**Next**" to continue.



>>>> **Welcome to Router Setup Wizard**

Set LAN & DHCP Server

LAN IP Address	<input type="text" value="192.168.1.1"/>
LAN Subnet Mask	<input type="text" value="255.255.255.0"/>
DHCP Server	<input checked="" type="radio"/> Enable <input type="radio"/> Disable
Range Start	<input type="text" value="192.168.1.100"/>
Range End	<input type="text" value="192.168.1.199"/>

 >

Step 4: Select Internet Connection Type

Select how the router will set up the Internet connection: Obtained IP automatically; **Fixed IP address**; **PPPoE to obtain IP automatically**; **PPPoE with a fixed IP address**; **PPTP**.



>>>>> *Welcome to Router Setup Wizard*

Select Internet Connection Type

- Obtain IP automatically (DHCP client)
- Fixed IP address
- PPPoE to obtain IP automatically
- PPPoE with a fixed IP address
- PPTP

< Back Next > Exit

Obtain IP automatically (DHCP client):

If you have enabled DHCP server, choose "Obtain IP automatically (DHCP client)" to have the router assign IP addresses automatically.

Fixed IP Address:

If Fixed IP address is assigned, the below screen will pop up. Please set the WAN address and DNS server.

PPPoE to obtain IP automatically or PPPoE with a fixed IP address

Enter in the username, password (and IP address) provided to you by your ISP.



Welcome to Router Setup Wizard

Set PPPoe with a fixed IP Address

User Name	<input type="text"/>
Password	<input type="password"/>
Verify Password	<input type="password"/>
IP Address	<input type="text" value="0.0.0.0"/>

PPTP:

Enter IP addresses and password.

Welcome to Router Setup Wizard

Set PPTP Client

My IP	<input type="text" value="0.0.0.0"/>
Subnet Mask	<input type="text" value="0.0.0.0"/>
GateWay	<input type="text" value="0.0.0.0"/>
Server IP	<input type="text" value="0.0.0.0"/>
PPTP Account	<input type="text"/>
PPTP Password	<input type="password"/>
Retype Password	<input type="password"/>



Step 5: Set Wireless LAN connection

Click “**enable**” to enable wireless LAN. If you enable the wireless LAN, type the SSID in the text box and select a communications channel. The SSID and channel must be the same as wireless devices attempting communication to the router. Select a channel number and click on **Next**.

The screenshot shows a web-based configuration interface for a wireless broadband router. At the top, a green banner reads "Welcome to Router Setup Wizard". Below this, the title "Set Wireless LAN Connection" is displayed in blue. The main configuration area has a light green background and contains the following elements:

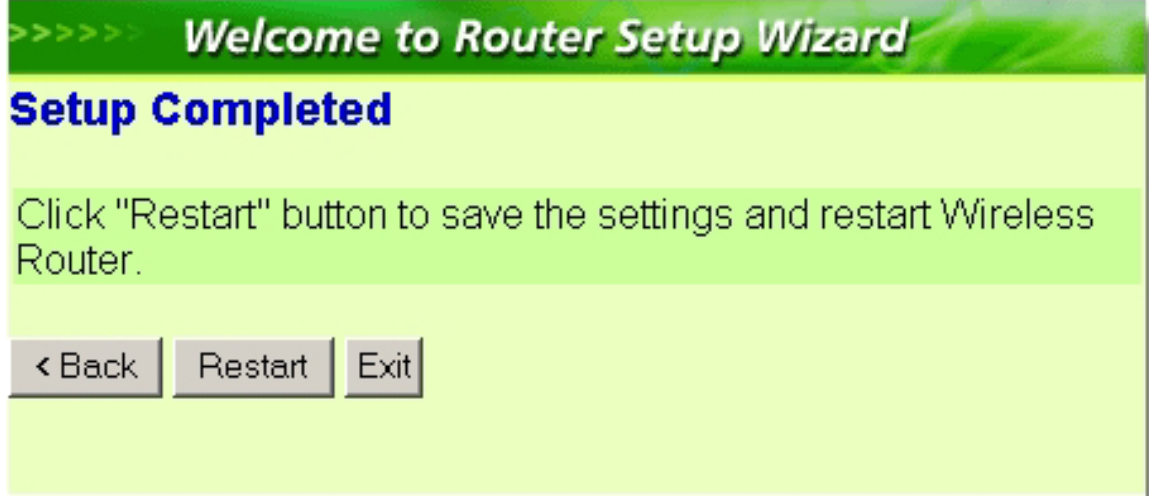
- A label "Wireless LAN" followed by two radio buttons: "Enable" (which is selected) and "Disable".
- A text input field labeled "SSID" containing the text "default".
- A dropdown menu labeled "Channel" with the number "6" selected.
- At the bottom, there are three buttons: "< Back", "Next >", and "Exit".

Step 6: Restart

The Setup wizard is now completed. The new settings will be effective after the Wireless Broadband Router restarted. Please click “**Restart**” to reboot the router. If you do not want to make any changes, please click “**exit**” to quit without any changes. You also can go back to modify the setting by clicking “**Back**”.



Wireless Broadband Router



Then relaunch your Web browser, to link to your favorite Web site to test your Internet connection.

For additional settings or information, refer to the Manual located on the CD.

Atlantis Land S.p.A.
Viale De Gasperi, 122
Mazzo di Rho – MI – Italy
info@atlantis-land.com
sales@atlantis-land.com

Free Manuals Download Website

<http://myh66.com>

<http://usermanuals.us>

<http://www.somanuals.com>

<http://www.4manuals.cc>

<http://www.manual-lib.com>

<http://www.404manual.com>

<http://www.luxmanual.com>

<http://aubethermostatmanual.com>

Golf course search by state

<http://golfingnear.com>

Email search by domain

<http://emailbydomain.com>

Auto manuals search

<http://auto.somanuals.com>

TV manuals search

<http://tv.somanuals.com>