



# NetFly USB 54 Wireless USB Adapter



## USER MANUAL

A02-UP1-W54(V1.1)\_ME01

Where solutions begin



### **ITALIANO**

Questo prodotto è coperto da garanzia Atlantis Land **On-Center** della durata di 2 anni. Per maggiori dettagli in merito o per accedere alla documentazione completa in Italiano fare riferimento al sito [www.atlantis-land.com](http://www.atlantis-land.com).

### **ENGLISH**

This product is covered by Atlantis Land 2 years **On-Center** warranty. For more detailed informations please refer to the web site [www.atlantis-land.com](http://www.atlantis-land.com).

For more detailed instructions on configuring and using this device, please refer to the online manual.

### **FRANCAIS**

Ce produit est couvert par une garantie Atlantis Land **On-Center** 2 ans. Pour des informations plus détaillées, référez-vous svp au site Web [www.atlantis-land.com](http://www.atlantis-land.com).

### **DEUTSCH**

Dieses Produkt ist durch die Atlantis Land 2 Jahre **On-Center** Garantie gedeckt. Für weitere Informationen, beziehen Sie sich bitte auf Web Site [www.atlantis-land.com](http://www.atlantis-land.com).

### **ESPAÑOL**

Este producto está cubierto de garantía Atlantis Land **On-Center** por 2 años. Para una información más detallada, se refiera por favor al Web site [www.atlantis-land.com](http://www.atlantis-land.com).

**Where solutions begin**



The award of the information is facultative, but its lack will prevent ATLANTIS LAND® from starting the Guarantee process requested.



**Register your product!**

**[www.atlantis-land.com](http://www.atlantis-land.com)**

Registration on the web site **[www.atlantis-land.com](http://www.atlantis-land.com)** within 15 days from the purchase of the product dismiss the customer from showing a valid proof of purchase (Sale Receipt or Invoice) in case of the request of intervention. For further information we invite you to look at our web site at the section WARRANTY.

### **Copyright**

The Atlantis Land logo is a registered trademark of Atlantis Land. All other names mentioned may be trademarks or registered trademarks of their respective owners. Subject to change without notice. No liability for technical errors and/or omissions.

**Where solutions begin**



**INDEX**

- 1. INTRODUCTION .....8
- 2. UNPACKING AND SETUP .....8
  - 2.1 Unpacking.....8
  - 2.2 Setup .....8
- 3. HARDWARE INSTALLATION .....9
  - 3.1 LED Indicator.....9
  - 3.2 Check the installation .....9
- 4. SOFTWARE INSTALLATION.....9
  - 4.1 Utility and Driver Installation for Windows.....9
- 5. WINDOWS VISTA WIRELESS UTILITY SETTING .....11
  - 5.1 Link Information.....11
  - 5.2 Configuration .....12
  - 5.3 Site Survey .....13
  - 5.4 Profile.....14
  - 5.5 About .....14
- 6. WINDOWS XP/2000/ME/98 WIRELESS UTILITY SETTING.....15
  - 6.1 Link Information .....15
  - 6.2 Configuration .....16
  - 6.3 Advanced.....18
    - 6.3.1 Open System / Shared Key.....18
    - 6.3.2 WPA-PSK / WPA2-PSK.....19
    - 6.3.3 WPA / WPA2.....20
  - 6.4 Site Survey .....21
  - 6.5 About .....21
  
- APPENDIX A: Technical Specifications.....22
- APPENDIX B: Support.....23

**A02-UP1-W54(V1.1)\_ME01(V1.0 December 2007)**



### **Copyright Statement**

No part of this publication may be reproduced, stored in a retrieval system, or transmitted in any form or by any means, whether electronic, mechanical, photocopying, recording or otherwise without the prior writing of the publisher. Windows™ 98SE/2000/ME/XP are trademarks of Microsoft® Corp. Pentium is trademark of Intel. All copyright reserved.

The Atlantis Land logo is a registered trademark of Atlantis Land. All other names mentioned may be trademarks or registered trademarks of their respective owners. Subject to change without notice. No liability for technical errors and/or omissions.

### **Wireless LAN, Health and Authorization for use**

Radio frequency electromagnetic energy is emitted from Wireless LAN devices. The energy levels of these emissions however are far much less than the electromagnetic energy emissions from wireless devices like for example mobile phones. Wireless LAN devices are safe for use frequency safety standards and recommendations. The use of Wireless LAN devices may be restricted in some situations or environments for example:

- On board of airplanes, or
- In an explosive environment, or
- In case the interference risk to other devices or services is perceived or identified as harmful

In case the policy regarding the use of Wireless LAN devices in specific organizations or environments (e.g. airports, hospitals, chemical/oil/gas industrial plants, private buildings etc.) is not clear, please ask for authorization to use these devices prior to operating the equipment.

### **Regulatory Information/disclaimers**

Installation and use of this Wireless LAN device must be in strict accordance with the instructions included in the user documentation provided with the product. Any changes or modifications made to this device that are not expressly approved by the manufacturer may void the user's authority to operate the equipment. The Manufacturer is not responsible for any radio or television interference caused by unauthorized modification of this device, of the substitution or attachment. Manufacturer and its authorized resellers or distributors will assume no liability for any damage or violation of government regulations arising from failing to comply with these guidelines.

### CE Mark Warning

This is a Class B product. In a domestic environment, this product may cause radio interference, in which case the user may be required to take adequate measures.

### CE in which Countries where the product may be used freely:

Germany, UK, Italy, Spain, Belgium, Netherlands, Portugal, Greece, Ireland, Denmark, Luxembourg, Austria, Finland, Sweden, Norway and Iceland.

France: except the channel 10 through 13, law prohibits the use of other channels.

### CE/EMC Restriction of Liability

The product described in this handbook was designed, produced and approved according to the EMC-regulations and is certified to be within EMC limitations.

If the product is used in an uncertified PC, the manufacturer undertakes no warranty in respect to the EMC limits. The described product in this handbook was constructed, produced and certified so that the measured values are within EMC limitations. In practice and under special circumstances, it may be possible, that the product may be outside of the given limits if it is used in a PC that is not produced under EMC certification. It is also possible in certain cases and under special circumstances, which the given EMC peak values will become out of tolerance. In these cases, the user himself is responsible for compliance with the EMC limits.

### Declaration of Conformity

This equipment has been tested and found to comply with Directive 1999/5/CE of the European Parliament and of the Council on radio equipment and telecommunications terminal equipment and the mutual recognition of their conformity. After assessment, the equipment has been found to comply with the following standards: EN 300.328 (radio), EN 301 489-1, EN 301 489-17 (electromagnetic compatibility) and EN 60950 (safety). This equipment may be used in all European Union countries and in all countries applying Directive 1999/5/CE, without restriction, with the exception of the following countries:

**France:** When this equipment is used outdoors, output power is limited to within the frequency bands listed on the chart. For more info, consult the website [www.art-telecom.fr](http://www.art-telecom.fr).

Location	Frequency Band (MHz)	Power (EIRP)
Indoor (no restriction)	2400-2483,5	100mW(20dBm)



Outdoor	2400-2454 2454-2483,5	100mW(20dBm) 10mW(10dBm)
---------	--------------------------	-----------------------------

**Italy:** For more info, consult the website [www.comunicazioni.it](http://www.comunicazioni.it)

## 1. INTRODUCTION

Congratulations on your purchase of this 802.11g Wireless USB 2.0 Adapter.

This manual helps to get familiar with the 802.11g Wireless USB 2.0 Adapter. This manual contains detailed instructions in operation of this product. Please keep this manual for future reference.

With a Wireless LAN (IEEE 802.11g) USB 2.0 Adapter, a desktop or laptop computer can communicate with another computer in a wireless way. Easy-to-use utilities are bundled with Wireless USB Adapter for configuration, monitoring, and diagnosis purposes.

The 802.11g Wireless USB 2.0 Adapter can wirelessly transmit and receive data, minimizing the need for wired connections, at a speed of up to fifty-four megabit per second.

The 802.11g Wireless USB 2.0 Adapter provides users with an access to real-time information anywhere in their organization. The mobility provides productivity and service, which are not available under wired networks. The 802.11g Wireless USB 2.0 Adapter configuration is easy to change from peer-to-peer networks, suitable for a small number of users, to full infrastructure networks of thousands of users that allow roaming around a broad area.

## 2. UNPACKING AND SETUP

This chapter provides unpacking and setup information for the Wireless Adapter.

### 2.1 Unpacking

Open the box of the Wireless Adapter and carefully unpack it. The box should contain the following items:

- One Wireless USB Adapter
- One Driver & Utility with User's Guide CD-ROM
- One MultiLanguage Quick Start Guide

If any item is found missing or damaged, please contact your local reseller for replacement.

### 2.2 Setup

The setup of the Wireless LAN Adapter can be performed using the following steps:



- Visually inspect the USB Adapter and make sure that it is fully plugged in to the USB slot.
- Make sure that there is a well environment that there is no much intrusion to have a better connection.

## 3. HARDWARE INSTALLATION

### 3.1 LED Indicator

#### *Link*

The Link LED indicator lighted green when the Wireless Adapter is connected to wireless network successfully.

### 3.2 Check the installation

The LEDs of the Wireless LAN Adapter are clearly visible and the status of the network link can be seen instantly:

1. When connected to the USB port and the driver were installed, the LNK LED will start blinking, and it means that the device is starting to scan an 802.11g wireless device near the 802.11g Wireless USB 2.0 Adapter.
2. While the 802.11g Wireless USB 2.0 Adapter linked up to the Access Point or to other Wireless LAN station, the LINK LED will always light up.

## 4. SOFTWARE INSTALLATION

**Before insert the USB Dongle into USB port of your computer, please install the Utility Program first. Make sure that the 802.11g Wireless USB 2.0 Adapter is NOT inserted into the USB slot.**

### 4.1 Utility and Driver Installation for Windows

1. Insert the CD-ROM and the Auto-run program will appear. Alternatively, open a file browser and double click on the autorun.exe file located in the CD directory. In some specific setting on Windows system, you may need to proceed the software manually, go to your Windows Start menu and choose **Run**, type **"D:\USB\VistaSetup.exe"** or **"D:\USB\XP2K1Setup.exe"** in the dialog box and click OK.

Note: (D:\) will depends on where the CD-ROM drive is located and <Windows OS> will depend on the Windows OS you are using).

- If you need to install the driver manually, refer each Windows OS to the following CD-Rom directory path: D:\USB\Driver\


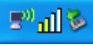


Note: (D:\ will depends on where the CD-ROM drive is located and <Windows OS> will depend on the Windows OS you are using).

- Click on **“A02-UP1-W54”** icon to select Wireless USB Adapter Home Page.
- Select **“XP / 2K/ ME / 98”** or **“Vista”**, depending on your operating system, and the install wizard will begin installing the software. Follow the install wizard instructions to complete the installation.

The installation program will help you to setup the Wireless LAN utility.

Be noted that the Windows XP have its own Wireless Utility; you can either use the utility of Windows XP or the provided utility.

When the Wireless LAN Adapter was installed, you will see the icon on the Windows task bar. The user can configure the wireless settings using the Wireless Adapter Configuration Utility. Double-click the utility icon that appears in the taskbar

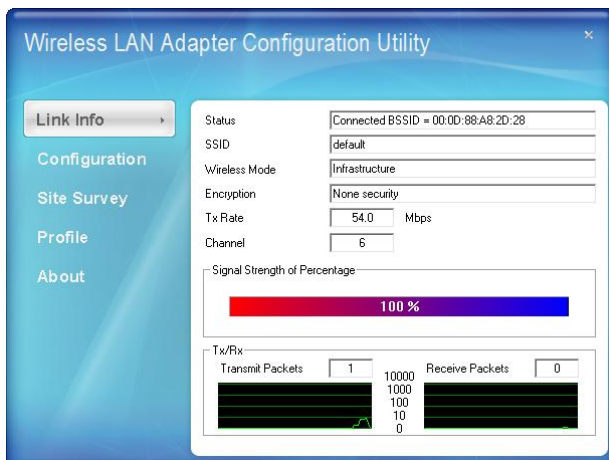
Icon	Quality of Signal
	Excellent
	Good
	Waiting connection
	Not connected

When the icon in the toolbar represents in full green color then the signal strength has an excellent performance with the AP, if it represents in yellow color then the signal strength has a fair performance with the AP, and if the icon represents no color, then the signal strength has a worst performance with the wireless station.

## 5. WINDOWS VISTA WIRELESS UTILITY SETTING

### 5.1 Link Information

This is the default screen after launching the Utility program.



**Status:** Shows the associated BSSID, which can be used to identify the wireless access point.

**SSID:** Shows the current SSID, which must be the same on the wireless client and AP in order for communication to be established.

**Wireless Mode:** Shows the current wireless mode used for wireless communication.

**Encryption:** Shows the current encryption mode used on the wireless network.

**Tx Rate:** Shows the current data rate used for transmitting.

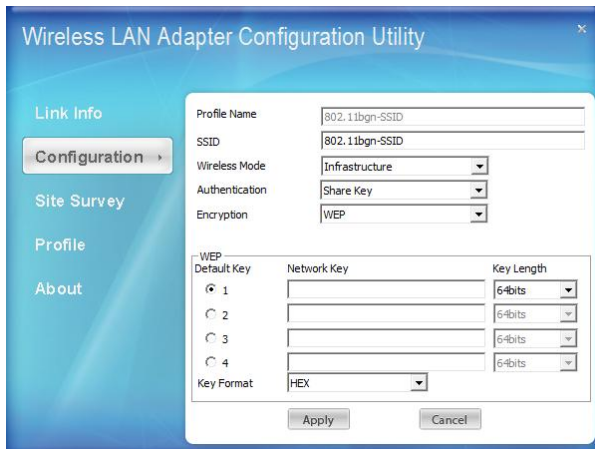
**Channel:** Shows the current channel for communication.

**Signal Strength of Percentage:** Shows the wireless signal strength of the connection between the Wireless LAN USB 2.0 Adapter with the Access Point.

**TX/RX:** Shows the statistics of data transfer, and the calculation is based on the number of packets transmitted and received. It also shows the link quality of the Wireless LAN USB 2.0 Adapter with the Access Point when operation under Infrastructure mode.

## 5.2 Configuration

This screen is where you set the basic wireless settings for the Wireless LAN USB 2.0 Adapter.



**Profile Name:** The default name is the same as the SSID of the platform which you connected and you can change the name you favor( the key length is limited 1~32 bits).

**SSID:** Service Set Identifier, which is a unique name shared among all client in a wireless network. The SSID must be identical for client in the wireless network.

**Wireless Mode:** There are two modes available for selection

- Infrastructure –to establish wireless communication with the LAN and other wireless client through the use of Access Points.
- Ad-Hoc – to establish point- to-point wireless communication directly with other wireless client device.

**Authentication:** The following options are available:

- Open System
- Shared key
- WPA-PSK
- WPA2-PSK
- WPA EAP-TLS
- WPA2 EPA-TLS

Select **Open System**, **Shared Key** for WEP data encryption feature.

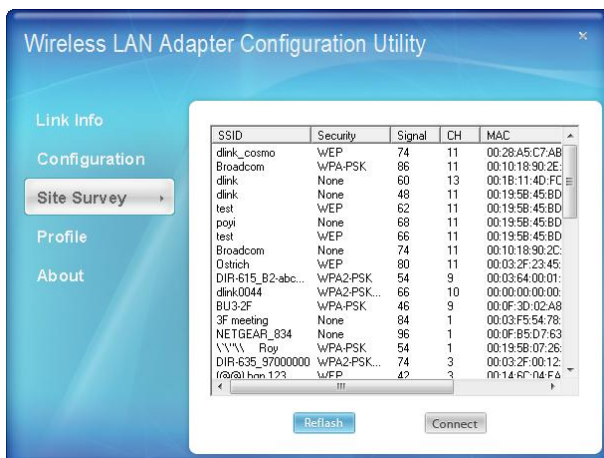
**Open System** and **Shared Key** require the users to set a WEP key to exchange data with other wireless clients that have the same WEP key.

The following will only be activated when Open, Shared Key is enabled:

- **Default Key:** select one of the 4 keys to use.
- **Network Key:** choose the encryption way, either in HEX or ASCII formats, and enter the password in the blank space.
- **Key Length:** select 64 or 128 bits as the length of the keys.
- **Key Format:** HEX or ASCII
- **WPA-PSK/ WPA2-PSK:** This Passphrase must be the same on each computer that is connected to the wireless network.
- **WPA/ WPA2:** Please click the “Certificate” button. Then, please select the certificate that user wants to use
- **Encryption:** Select the encryption type for TKIP or AES encryption type.

### 5.3 Site Survey

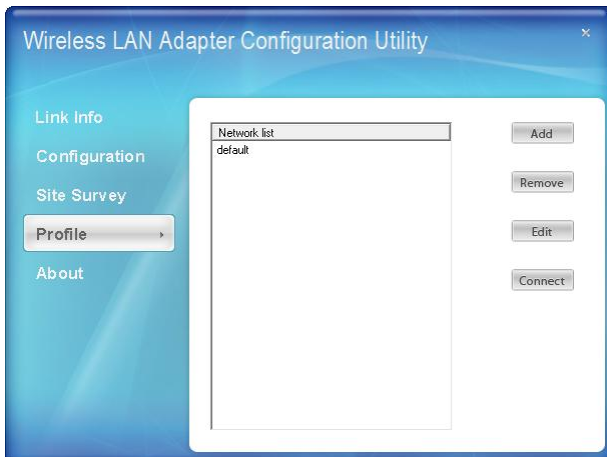
This screen displays the wireless networks (wireless clients and Access Points) that are within range and it also allows the user to establish wireless communications with an available wireless network.



Select any one of the wireless networks by double-clicking on it or clicking on the **“Connect”** button.

## 5.4 Profile

The user can create and manage the created profiles for home, work or public areas. By double-clicking on one of the created profile, the setting will adjust to the specific setting such as SSID, channel, and encryption as saved by that particular profile.



**Add:** Adds a profile. The following screen will appear. The user can enter the necessary information required for accessing Access Points or Wireless Router.

**Remove:** Deletes the selected profile

**Edit:** To view and change its settings of the profile.

**Connect:** The current connected profile information

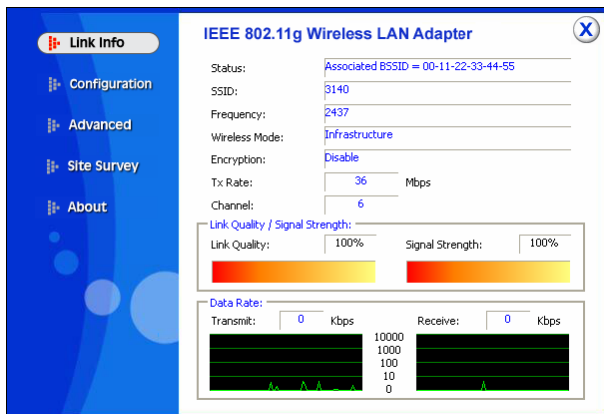
## 5.5 About

This screen displays information about the Wireless Adapter, such as the Driver and Utility version. When a new version of the utility becomes available for upgrade, users will be able to identify by version numbers.

## 6. WINDOWS XP/2000/ME/98 WIRELESS UTILITY SETTING

### 6.1 Link Information

The default page is as below after launching the Utility program.



**Status:** Shows the associated BSSID, which can be used to identify the wireless network.

**SSID:** Shows the current SSID, which must be the same on the wireless client and AP in order for communication to be established.

**Frequency:** Shows the current frequency used for wireless network.

**Wireless Mode:** Shows the current wireless mode used for wireless communication.

**Encryption:** Shows the current encryption mode used for wireless network.

**TxRate:** Shows the current data rate used for transmitting.

**Channel:** Shows the current channel for communication.

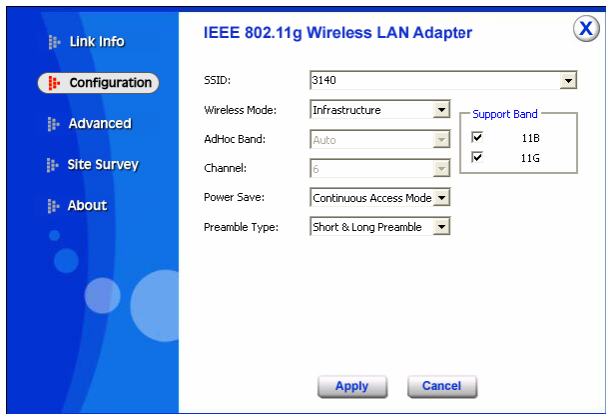
**Link Quality:** Shows the link quality of the wireless LAN adapter with the Access Point when operating under Infrastructure mode.

**Signal Strength:** Shows the wireless signal strength of the connection between the wireless LAN adapter card with the Access Point.

**Data Rate:** Shows the statistics of data transfer, and the calculation is based on the number of packets transmitted and received.

## 6.2 Configuration

This screen is where changes the basic wireless settings for the wireless LAN adapter with the minimum amount of effort to implement a secure wireless network environment.



**SSID:** Service Set Identifier, which is a unique name shared among all clients and nodes in a wireless network. The SSID must be identical for each clients and nodes in the wireless network.

**Wireless Mode:** There are two types available for selection

- Infrastructure – to establish wireless communication with LAN and other wireless clients through the use the Access Points.
- Ad-Hoc – to establish point-to-point wireless communication directly with other wireless client devices such as wireless network PCI Adapter.
  - **AdHoc Band:** When using Wireless Mode for Ad-Hoc mode, select the AdHoc Band from drop down list for 11b only, 11g only or Auto for both of 11b and 11g.
  - **Channel:** The channel the AP operates on. The channel range of 1 to 11 for North America (FCC) domain and 1 to 13 for European (ETSI) domain and 1 to 14 for Japanese domain.

**WARNING:** Country domain can't be choose by enduser, because the incorrect region may be in violation of applicable laws.

**Power Mode:** There are 3 modes to choose from.



- Continuous Access Mode (default) – the wireless LAN adapter is constantly operating with full power. This mode consumes the most power.
- Maximum Power Save – the wireless LAN adapter consumes the least power. This mode only operates when there is wireless network activity.
- Power Save – the wireless LAN adapter consumes moderate level of power.

**Preamble Type:** Select Long or Short Preamble type.

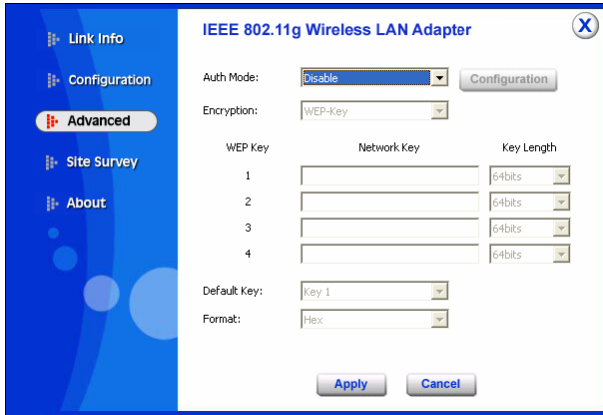
Preamble is a sequence of bits transmitted at 1Mbps that allows the PHY circuitry to reach steady-state demodulation and synchronization of bit clock and frame start. Two different preambles and headers are defined: the mandatory supported Long Preamble and header, which interoperate with the 1 Mbit/s and 2 Mbit/s DSSS specification (as described in IEEE Std 802.11), and an optional Short Preamble and header (as described in IEEE Std 802.11b). At the receiver, the Preamble and header are processed to aid in demodulation and delivery of the PSDU. The Short Preamble and header may be used to minimize overhead and, thus, maximize the network data throughput. However, the Short Preamble is supported only from the IEEE 802.11b (High- Rate) standard and not from the original IEEE 802.11. That means that stations using Short-Preamble cannot communicate with stations implementing the original version of the protocol. Click “Apply” for the changes to take effect.

**Support Band:** There are two modes the user can select, including 11B and 11G. The default setting is 11B and 11G are enabled, which is interoperable with both 11B and 11G devices.

Note: user must select one of 11B or 11G at least; otherwise the wireless connection will not function.

### 6.3 Advanced

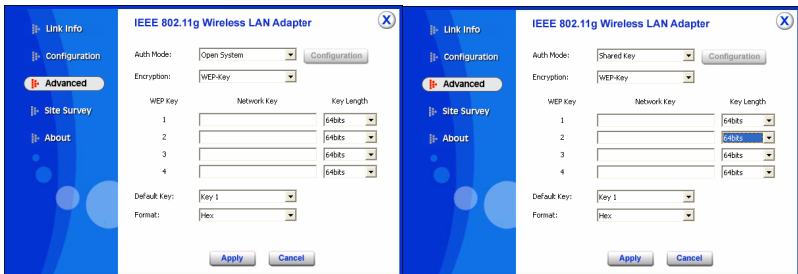
This screen is where you configure the Security settings for the Wireless Adapter.



**Auth Mode:** Select the authentication type from drop down list for:

- Disable
- Open System
- Shared Key
- WPA
- WPA-PSK
- WPA2
- WPA2-PSK

#### 6.3.1 Open System / Shared Key



Wireless USB Adapter

**WEP Key 1~4:** choose the encryption way, either in HEX or ASCII formats, and enter the password in the blank space.

**Key Length:** select 64 or 128 bits as the length of the keys. If you select 64bit in Hex format, you must type 10 values in the following range (0~F, hexadecimal), or 64bit in ASCII format, you must type 5 values in the following range (0~9, A~Z and a~z Alphanumeric); If you select 128bit in Hex format, you must type 26 values (0~F, hexadecimal), or 128bit in ASCII format, you must type 13 values in the following range (0~9, A~Z and a~z Alphanumeric).

**Default Key:** select one of the 4 keys to use.

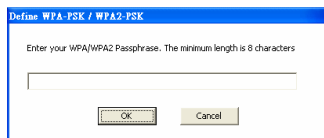
**Key Format:** ASCII or HEX.

### 6.3.2 WPA-PSK / WPA2-PSK



If WPA-PSK or WPA2-PSK is selected, the above screen is shown.

Please select the encryption type from drop down menu and press **Configuration** button to configure the passphrase key.

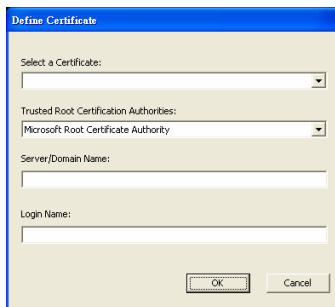


**Encryption:** Select the encryption type for TKIP or AES encryption type.

### 6.3.3 WPA / WPA2



If WPA or WPA2 is selected, the above screen is shown. Please select the encryption type from drop down menu and press Configuration button to configure parameters for the RADIUS server.

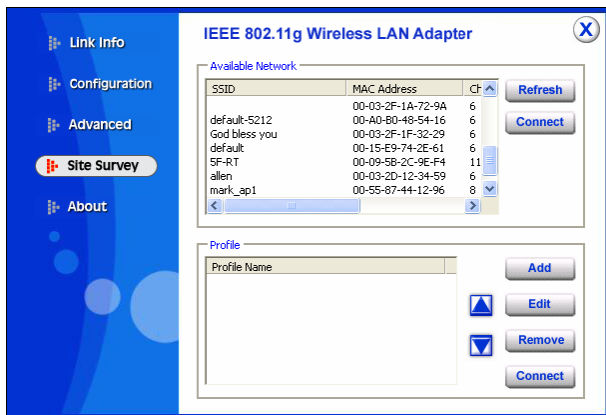


**Encryption:** Select the encryption type for TKIP or AES encryption type.

WARNING: WPA, WPA2 don't support In Windows 98/ME .

## 6.4 Site Survey

This screen allows user to scan for available wireless networks (wireless clients and Access Points). It also allows the user to establish wireless communications with an available wireless network.



**Available Network:** displays the wireless networks (wireless clients and Access Points) that are in signal range.

Select any one of them to establish communications by simply mouse double-click or click on the “Connect” button.

Click “Refresh” button to start scanning for available network again.

**Profile:** The user can create and manage the created profiles for home, work or public areas. By double-clicking on one of the created profile, the setting will adjust to the specific setting such as SSID, channel, and WEP as saved by that particular profile.

**Add:** Adds a profile. Then, the following screen would appear. User can enter the necessary information required for accessing Access Points or Wireless Router.

**Edit:** To view and change its settings of the profile.

**Remove:** Deletes the selected profile

**Connect:** The current connected profile information.

## 6.5 About

This screen displays information about the Wireless Adapter, such as the Driver and Utility version. When a new version of the utility for upgrade, users will be able to identify by version numbers.

## APPENDIX A: Technical Specifications

<b>General</b>	
<b>Radio Technology</b>	IEEE 802.11b Direct Sequence Spread Spectrum (DSSS) IEEE 802.11g Orthogonal Frequency Division Multiplexing (OFDM)
<b>Interface</b>	USB Pen Size v1.1 / v2.0
<b>Data Transfer Rate</b>	1, 2, 5.5, 6, 9, 11, 12, 18, 24, 36, 48, 54Mbps
<b>Receiver Sensitivity</b>	54Mbps: Typical -68dBm @ 10% PER (Packet Error Rate) 11Mbps: Typical -83dBm @ 8% PER (Packet Error Rate)
<b>Frequency Range</b>	2412 ~ 2472 MHz ISM band (channels 1 ~ 13)
<b>Modulation Schemes</b>	BPSK/QPSK/CCK/OFDM
<b>Channels</b>	1~13 channels (ETSI)
<b>Media Access Protocol</b>	CSMA/CA with ACK
<b>Security</b>	64/128-bits WEP Encryption, WPA-PSK, WPA2-PSK, WPA, WPA2
<b>Diagnostic LED</b>	LNK (Link)
<b>Antenna</b>	Internal Printed Antenna

Physical and Environmental	
<b>Driver Support</b>	Windows 98, ME, Windows 2000, Windows XP, Windows Vista
<b>Continuos Current Consuptin</b>	280 mA (Rx), 410 mA (Tx)
<b>Temperature</b>	Operating: 0° ~ 40° C, Storage: -10° ~ 70° C
<b>Humidity</b>	10% ~ 95% RH, no condensation
<b>Dimensions</b>	77 x 26 x 12 mm
<b>Certifications</b>	FCC Part 15.247 for US, ETS 300 328 for Europe,

## APPENDIX B: Support

If you have any problems with the Wireless USB Adapter, please contact the dealer where you bought this product. If you have any other questions you can contact the Atlantis Land company directly at the following address:

**Atlantis Land**  
**Via Pelizza da Volpedo, 59**  
**20092 Cinisello Balsamo (MI) Italy**

Tel: +39.(0)2.93906085  
Fax: +39.(0)2.93906161  
Help Desk :+39.(0)2.93907634  
Email: [tecnici@atlantis-land.com](mailto:tecnici@atlantis-land.com)  
WWW: [www.atlantis-land.com](http://www.atlantis-land.com)



**Atlantis Land**  
Via Pelizza da Volpedo, 59  
20092 Cinisello Balsamo – MI – Italy  
**info@atlantis-land.com**

**Where solutions begin**



## Free Manuals Download Website

<http://myh66.com>

<http://usermanuals.us>

<http://www.somanuals.com>

<http://www.4manuals.cc>

<http://www.manual-lib.com>

<http://www.404manual.com>

<http://www.luxmanual.com>

<http://aubethermostatmanual.com>

Golf course search by state

<http://golfingnear.com>

Email search by domain

<http://emailbydomain.com>

Auto manuals search

<http://auto.somanuals.com>

TV manuals search

<http://tv.somanuals.com>