

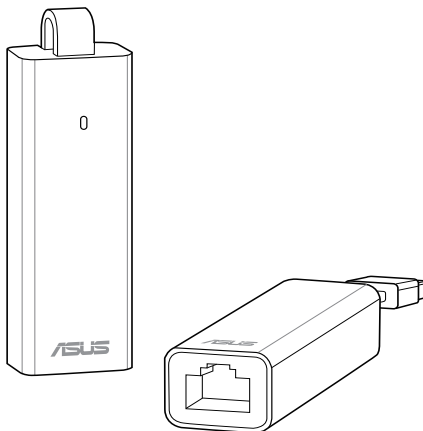


ASUS[®]

WL-330NUL

Wireless-N150 Combo USB Adapter

(For 802.11g/b/n Wireless Networks)



Quick Start Guide





NA8746/ Second Edition / October 2013

English..... 3

Português do Brasil..... 8

Français 13

Español..... 18



.....
 Product Name: All-in-One Wireless-N pocket router

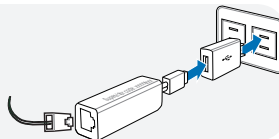




• Use WL-330NUL as a portable router

In circumstances of weak wireless signal or Ethernet network alone, such as in a hotel, conference room or office, follow the steps below to access the Internet through WL-330NUL.

1. Connect the Ethernet cable to WL-330NUL and plug it into a power outlet.



2. When the LED indicator stops blinking and turns into a solid light in about 30 seconds, it indicates that WL-330NUL has finished booting up.

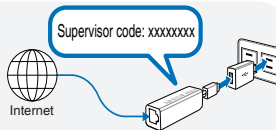
“Solid Light”



3. Select WL-330NUL's private network name. The default network name is **WL-330NUL-private-xxxx** (xxxx is the last four numbers of WL-330NUL's MAC address).



4. Enter the private network password, which you can find on your WL-330NUL labeled as supervisor code.



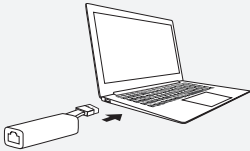
5. Launch your web browser.

• For Windows® users

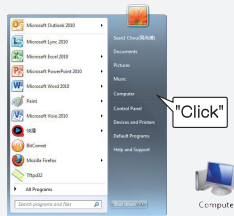
If your device is running on Windows® operating system, **ensure that you have installed the WL-330NUL Utility before connecting to the Internet.**

A. Utility installation

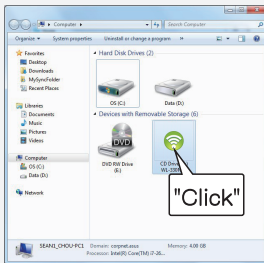
1. Insert WL-330NUL into the device's USB port.



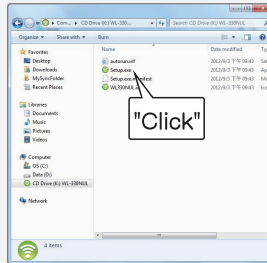
2. Click **Start > Computer** or click the computer icon on the desktop.



3. Click the WL-330NUL icon in **Device with Removable Storage**.



4. Double-click **Setup.exe** to install the WL-330NUL utility.

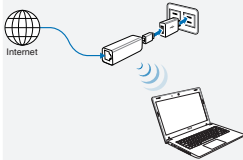


B. Internet connection

Select one of the following ways to access the Internet:

Mode 1

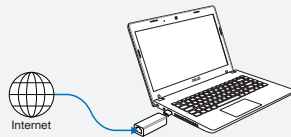
Connect an Ethernet cable to WL-330NUL and plug to a power source



1. Connect to the WL-330NUL private network name.
2. Enter the private network password.
3. Launch your web browser and start surfing the Internet.

Mode 2

Connect WL-330NUL to a computer via an Ethernet cable



1. Launch your browser and start surfing the Internet.
To configure the router settings, please launch the WL-330NUL utility.

Mode 3

Plug WL-330NUL to a power source



1. Connect to the WL-330NUL private network name.
2. Enter the private network password.
3. Use the WL-330NUL utility to select a Wi-Fi network (SSID) and connect to the Internet.

Mode 4

Connect WL-330NUL to a computer

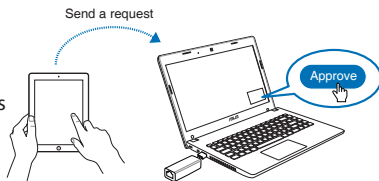


1. Select a Wi-Fi network (SSID) through the Utility and connect to the Internet.

C. One-click sharing

To share Internet access:

1. Let the guest client connect to Wi-Fi network (SSID): WL-330NUL-Guest-xxxx (xxxx is the last four numbers of WL-330NUL's MAC address).
2. Launch the web browser.
3. Follow the onscreen instructions.

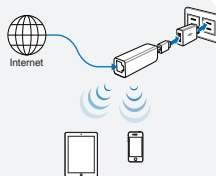


.....
 Ensure to launch the utility before using the Guest Access function.

• For tablet PC and smartphone users

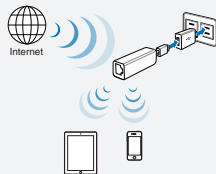
To access the Internet via an Ethernet cable :

1. Connect to the WL-330NUL private network name.
2. Enter the private network password.
3. Launch the web browser and start surfing the Internet.



To access the Internet wirelessly:

1. Connect to the WL-330NUL private network name.
2. Enter your private network password.
3. Go to <http://router.asus.com>.
4. Enter the supervisor code shown on the surface of WL-330NUL.
5. Open the **Wireless Setting** page.
6. Select a Wi-Fi network (SSID) and connect to the Internet.
7. Launch the web browser and start surfing the Internet.

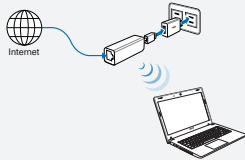


• For MAC OS X users

Select one of the ways to access the Internet:

Mode 1

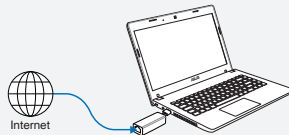
Connect an Ethernet cable to WL-330NUL and plug to a power source



Follow the steps in **To access the Internet via Ethernet** in section **For tablet PC and smartphone users**.

Mode 2

Connect WL-330NUL to a computer via an Ethernet cable



1. Launch your browser and start surfing the Internet.

Mode 3

Plug WL-330NUL to a power source



Follow the steps in **To access the Internet wirelessly** in section **For tablet PC and smartphone users**.

Mode 4

Connect WL-330NUL to a computer

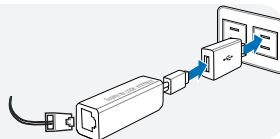


1. Go to <http://router.asus.com>.
2. Enter the supervisor code shown on the surface of WL-330NUL.
3. Open the **Wireless Setting** page.
4. Select a Wi-Fi network (SSID) and connect to the Internet.

● Utiliser le WL-330NUL comme routeur portable

Lorsque le sans fil est trop faible ou lorsque seule une connexion réseau filaire est disponible, comme dans un hôtel, une salle de conférence ou au bureau, suivez les étapes suivantes pour accéder à Internet avec le WL-330NUL.

1. Connectez le câble Ethernet au WL-330NUL et branchez ce dernier sur une prise électrique.



2. Le voyant lumineux s'arrête de clignoter et devient solide après environ 30 secondes, pour indiquer que l'initialisation du WL-330NUL est terminée.

"Solid Light"



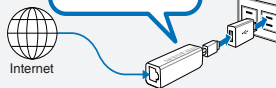
3. Modifiez si nécessaire le nom de réseau privé du WL-330NUL. Le nom par défaut est **WL-330NUL-private-xxxx** (xxxx étant les quatre derniers caractères de l'adresse MAC du WL-330NUL).

MAC address



4. Entrez le mot de passe du réseau. Ce mot de passe est localisé sur le WL-330NUL sous le nom "Supervisor code".

Supervisor code: xxxxxxxx



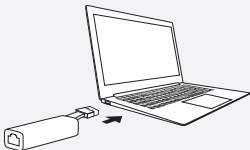
5. Ouvrez votre navigateur Internet.

● Pour les utilisateurs de Windows®

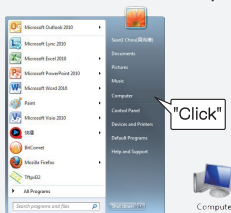
Si votre ordinateur fonctionne sous Windows®, assurez-vous d'avoir installé l'utilitaire accompagnant le WL-330NUL avant de tenter de vous connecter à Internet.

A. Installation de l'utilitaire

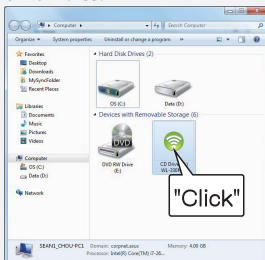
1. Connectez le WL-330NUL à l'un des ports USB de votre ordinateur.



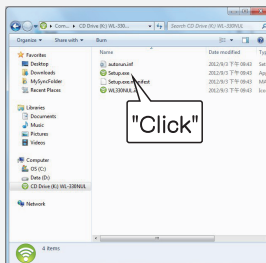
2. Cliquez sur **Démarrer > Ordinateur** ou sur le raccourci Ordinateur du Bureau si celui-ci est disponible.



3. Cliquez sur l'icône du WL-330NUL située dans la zone **Périphériques utilisant des supports de stockage amovibles**.



4. Double-cliquez sur le fichier exécutable nommé **Setup.exe** pour installer l'utilitaire du WL-330NUL.

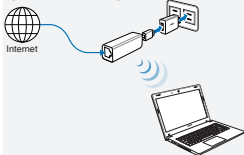


B. Connexion Internet

Utilisez l'une des méthodes suivantes pour accéder à Internet :

Méthode 1

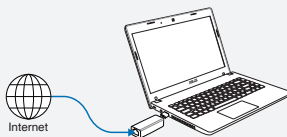
Connectez le câble Ethernet au WL-330NUL et branchez ce dernier sur une prise électrique.



1. Établissez une connexion au réseau privé du WL-330NUL.
2. Entrez le mot de passe.
3. Ouvrez votre navigateur Internet.

Méthode 2

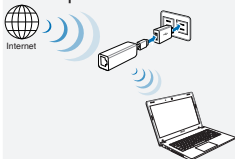
Connectez le WL-330NUL à un ordinateur par le biais d'un câble Ethernet.



1. Ouvrez votre navigateur Internet.
Pour configurer les paramètres du routeur, exécutez l'utilitaire accompagnant le WL-330NUL.

Méthode 3

Branchez le WL-330NUL sur une prise électrique.



1. Établissez une connexion au réseau privé du WL-330NUL.
2. Entrez le mot de passe.
3. Utilisez l'utilitaire du WL-330NUL pour sélectionner un réseau Wi-Fi (SSID) et établir une connexion à Internet.

Méthode 4

Connectez le WL-330NUL à un ordinateur par le biais d'un port USB.



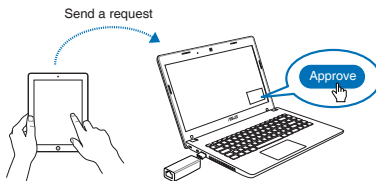
1. Utilisez l'utilitaire du WL-330NUL pour sélectionner un réseau Wi-Fi (SSID) et établir une connexion à Internet.



C. Partage de connexion

Pour partager une connexion Internet :

1. Connectez le client au réseau Wi-Fi network (SSID) : WL-330NUL-Guest-xxxx (xxxx étant les quatre derniers caractères de l'adresse MAC du WL-330NUL).
2. Ouvrez votre navigateur Internet.
3. Suivez les instructions apparaissant à l'écran.

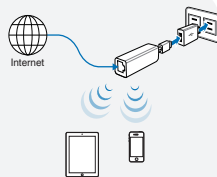


.....
Exécutez l'utilitaire du WL-330NUL avant de tenter de partager sa connexion.
.....

● Pour les utilisateurs de tablettes tactiles et de smartphones

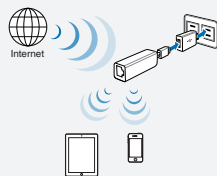
Pour accéder à Internet par le biais d'un câble Ethernet :

1. Établissez une connexion au réseau privé du WL-330NUL.
2. Entrez le mot de passe.
3. Utilisez l'utilitaire du WL-330NUL pour sélectionner un réseau Wi-Fi (SSID) et établir une connexion à Internet.



Pour accéder à Internet par le biais d'une connexion sans fil :

1. Établissez une connexion au réseau privé du WL-330NUL.
2. Entrez le mot de passe.
3. Allez sur le site <http://router.asus.com>.
4. Entrez le code superviseur localisé sur le WL-330NUL.
5. Ouvrez la page **Wireless Setting** (Paramètres sans fil).
6. Sélectionner un réseau Wi-Fi (SSID).
7. Ouvrez votre navigateur Internet.

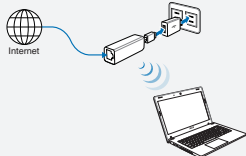


• Pour les utilisateurs de MAC OS X

Utilisez l'une des méthodes suivantes pour accéder à Internet :

Méthode 1

Connectez le câble Ethernet au WL-330NUL et branchez ce dernier sur une prise électrique.



Suivez les instructions **Pour accéder à Internet par le biais d'un câble Ethernet** de la section **Pour les utilisateurs de tablettes tactiles et de smartphones**

Méthode 2

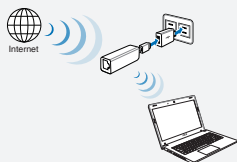
Connectez le WL-330NUL à un ordinateur par le biais d'un câble Ethernet.



1. Ouvrez votre navigateur Internet.

Méthode 3

Branchez le WL-330NUL sur une prise électrique.



Suivez les instructions **Pour accéder à Internet par le biais d'une connexion sans fil** de la section **Pour les utilisateurs de tablettes tactiles et de smartphones**

Méthode 4

Connectez le WL-330NUL à un ordinateur par le biais d'un port USB.



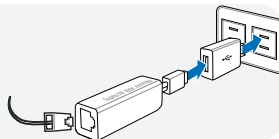
1. Allez sur le site <http://router.asus.com>.
2. Entrez le code superviseur localisé sur le WL-330NUL.
3. Ouvrez la page **Wireless Setting** (Paramètres sans fil).
6. Sélectionner un réseau Wi-Fi (SSID).



• Use WL-330NUL como uma roteador portátil

Em casos de sinal sem fio fraco ou rede Ethernet sozinha, como em um hotel, sala de conferência ou escritório, siga os passos abaixo para acessar a Internet pelo WL-330NUL.

1. Conecte o cabo de Ethernet ao WL-330NUL e plugue-o à tomada de energia.



2. Quando o indicador de LED parar de piscar e ficar uma luz sólida em cerca de 30 segundos, indica que o WL-330NUL parou de inicializar.

“Solid Light”



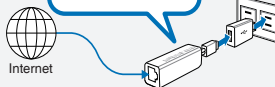
3. Selecione o nome da rede privada de WL-330NUL. O nome da rede padrão é **WL-330NUL-private-xxxx** (xxxx são os últimos quatro números do endereço MAC do WL-330NUL).

MAC address



4. Digite a senha da rede privada, qe você pode encontrar em seu WL-330NUL rotulado como o código do supervisor.

Supervisor code: xxxxxxxx



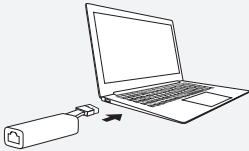
5. Inicie seu navegador da web.

• Para usuários de Windows®

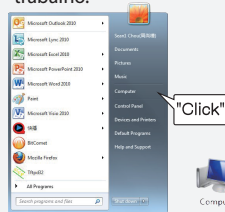
Se seu dispositivo estiver operando em sistema operacional Windows®, **certifique-se de ter instalado o Utilitário do WL-330NUL antes de se conectar à Internet.**

A. Instalação do utilitário

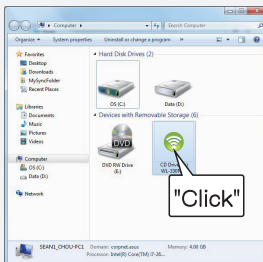
1. Insira o WL-330NUL na porta USB do dispositivo.



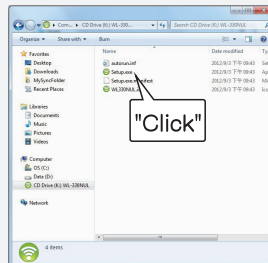
2. Clique em **Start (Iniciar) > Computer (Computador)** ou clique no ícone do computador na área de trabalho.



3. Clique no ícone do WL-330NUL em **Device with Removable Storage (Dispositivo com Armazenamento Removível).**



4. Clique duas vezes em **Setup.exe** para instalar o utilitário do WL-330NUL.



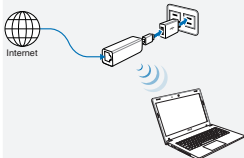


B. Conexão de internet

Selecione uma das seguintes maneiras de acessar a Internet:

Modo 1

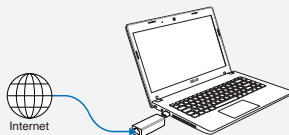
Conecte um cabo de Ethernet ao WL-330NUL e plugue-o à fonte de energia



1. Conecte ao nome de rede privada WL-330NUL.
2. Digite a senha da rede privada.
3. Inicie seu navegador de Internet e comece a navegar.

Modo 2

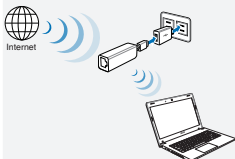
Conecte o WL-330NUL a um computador por um cabo de Ethernet



1. Inicie seu navegador e comece a navegar na Internet.
Para configurar o roteador, inicie o utilitário d WL-330NUL.

Modo 3

Plugue o WL-330NUL a uma fonte de energia



1. Conecte ao nome de rede privada WL-330NUL.
2. Digite a senha da rede privada.
3. Use o utilitário do WL-330NUL para selecionar uma rede Wi-Fi (SSID) e conectar à Internet.

Modo 4

Conecte o WL-330NUL a um computador

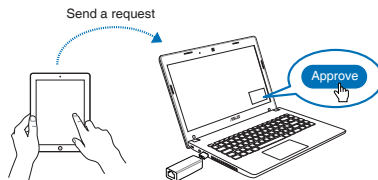


1. Selecione uma rede Wi-Fi (SSID) pelo Utilitário e conecte à Internet.

C. Compartilhamento em um clique

Para compartilhar acesso à Internet:

1. Permita que o cliente convidado se conecte à rede Wi-Fi (SSID): WL-330NUL-Guest-xxxx (xxxx são os últimos quatro números do endereço MAC do WL-330NUL).
2. Inicie o navegador da web.
3. Siga as instruções na tela.

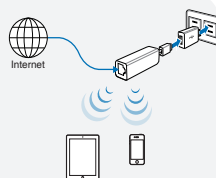


Certifique-se de iniciar o utilitário antes de usar a função Guest Access (Acesso a convidado).

• Para usuários de tablet PC e smartphone

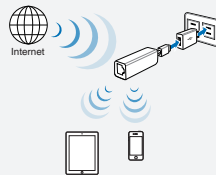
Para acessar a Internet pelo cabo de Ethernet:

1. Conecte ao nome de rede privada WL-330NUL.
2. Digite a senha da rede privada.
3. Inicie o navegador de Internet e comece a navegar.



Para acessar a Internet de forma sem fio:

1. Conecte ao nome de rede privada WL-330NUL.
2. Digite sua senha da rede privada.
3. Vá a <http://router.asus.com>.
4. Digite o código de supervisor exibido na superfície do WL-330NUL.
5. Abra a página **Wireless Setting (Configuração sem fio)**.
6. Selecione uma rede Wi-Fi (SSID) e conecte à Internet.
7. Inicie o navegador de Internet e comece a navegar.



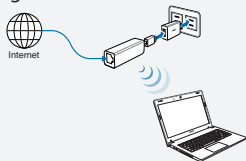


• Para usuários de MAC OS X

Selecione uma das maneiras de acessar a Internet:

Modo 1

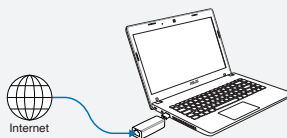
Conecte um cabo de Ethernet ao WL-330NUL e plugue-o à fonte de energia



Siga os passos em **Para acessar a Internet pela Ethernet** na seção **Para usuários de tablet PC e smartphone**.

Modo 2

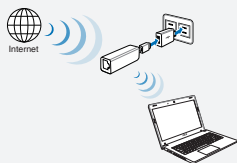
Conecte o WL-330NUL a um computador por um cabo de Ethernet



1. Inicie seu navegador e comece a navegar na Internet.

Modo 3

Plugue o WL-330NUL a uma fonte de energia



Siga os passos em **Para acessar a Internet de forma sem fio** na seção **Para usuários de tablet PC e smartphone**.

Modo 4

Conecte o WL-330NUL a um computador

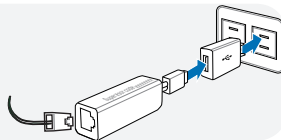


1. Vá a <http://router.asus.com>.
2. Digite o código de supervisor exibido na superfície do WL-330NUL.
3. Abra a página **Wireless Setting (Configuração sem fio)**.
4. Selecione uma rede Wi-Fi (SSID) e conecte à Internet.

● Utilizar su WL-330NUL como enrutador portable

Cuando la señal inalámbrica sea débil o solo exista una red Ethernet, como por ejemplo en un hotel, una sala de conferencias o una oficina, siga los pasos que se indican a continuación para acceder a Internet a través de su WL-330NUL.

1. Conecte el cable Ethernet a su WL-330NUL y enchúfelo a una toma de corriente eléctrica.



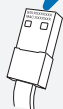
2. Cuando el indicador LED deje de parpadear y se ilumine permanentemente al cabo de 30 segundos aproximadamente, significará que el proceso de puesta en marcha de su WL-330NUL ha finalizado.

“Solid Light”



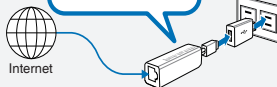
3. Seleccione el nombre de red privada de WL-330NUL. El nombre de red predeterminado es **WL-330NUL-private-xxxx** (donde xxxx son los cuatro últimos números de la dirección MAC de su WL-330NUL).

MAC address



4. Escriba la contraseña de red privada que podrá encontrar en su WL-330NUL etiquetado como código de supervisor.

Supervisor code: xxxxxxxx



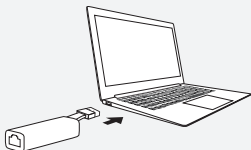
5. Inicie el explorador Web.

• Para usuarios de Windows®

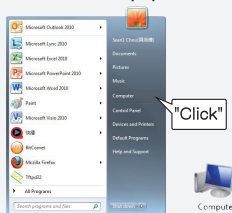
Si el dispositivo tiene el sistema operativo Windows®, asegúrese de que ha instalado la utilidad de WL-330NUL antes de conectarse a Internet.

A. Instalación de la utilidad

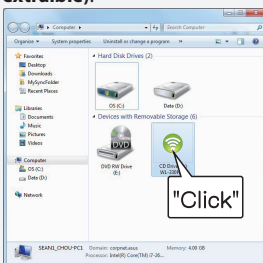
1. Inserte WL-330NUL en el puerto USB del dispositivo.



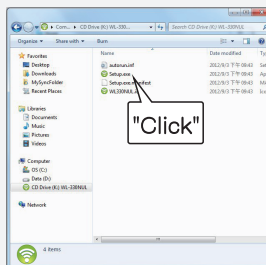
2. Haga clic en **Start (Inicio) > Computer (Equipo)** o haga clic en el icono del equipo del escritorio.



3. Haga clic en el icono WL-330NUL en **Device with Removable Storage (Dispositivo con almacenamiento extraíble)**.



4. Haga doble clic en el archivo **Setup.exe** para instalar la utilidad de WL-330NUL.

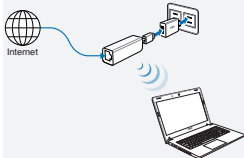


B. Conexión a Internet

Seleccione una de las formas siguientes para acceder a Internet:

Modo 1

Conectar un cable Ethernet a su WL-330NUL y enchufarlo a una toma de corriente eléctrica



1. Conéctese al nombre de red privada de WL-330NUL.
2. Escriba la contraseña de la red privada.
3. Inicie el explorador Web y comience a navegar por Internet.

Modo 2

Conectar su WL-330NUL a un equipo a través de un cable Ethernet



1. Inicie el explorador y comience a navegar por Internet. Para definir la configuración del enrutador, inicie la utilidad de WL-330NUL.

Modo 3

Enchufar su WL-330NUL a una toma de corriente eléctrica



1. Conéctese al nombre de red privada de WL-330NUL.
2. Escriba la contraseña de la red privada.
3. Mediante la utilidad de WL-330NUL, seleccione la red Wi-Fi (SSID) y conéctese a Internet.

Modo 4

Conectar su WL-330NUL a un equipo

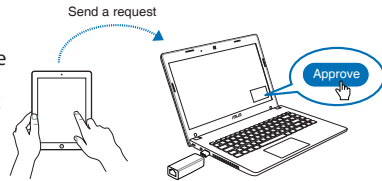


1. Seleccione una red Wi-Fi (SSID) a través de la utilidad y conéctese a Internet.

C. Compartir con un solo clic

Para compartir el acceso a Internet:

1. Permita que el cliente invitado se conecte a la red Wi-Fi (SSID): WL-330NUL-Guest-xxxx (donde xxxx son los cuatro últimos números de la dirección MAC de su WL-330NUL).
2. Inicie el explorador Web.
3. Siga las instrucciones que aparezcan en la pantalla.

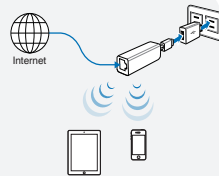


Asegúrese de iniciar la utilidad antes de utilizar la función Guest Access (Acceso de invitado).

• Para usuarios de tabletas y teléfonos inteligentes

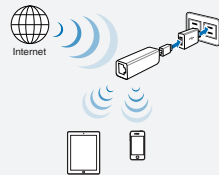
Para acceder a Internet a través de un cable Ethernet:

1. Conéctese al nombre de red privada de WL-330NUL.
2. Escriba la contraseña de la red privada.
3. Inicie el explorador Web y comience a navegar por Internet.



Para acceder a Internet de forma inalámbrica:

1. Conéctese al nombre de red privada de WL-330NUL.
2. Escriba la contraseña de la red privada.
3. Vaya a <http://router.asus.com>.
4. Escriba el código de supervisor que aparece en la superficie de su WL-330NUL.
5. Abra la página **Wireless Setting (Configuración inalámbrica)**.
6. Seleccione una red Wi-Fi (SSID) y conéctese a Internet.
7. Inicie el explorador Web y comience a navegar por Internet.

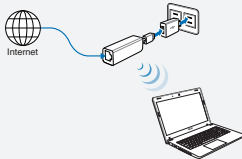


• Para usuarios de MAC OS X

Seleccione una de las formas siguientes para acceder a Internet:

Modo 1

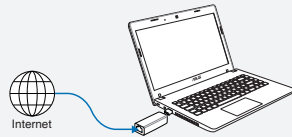
Conectar un cable Ethernet a su WL-330NUL y enchufarlo a una toma de corriente eléctrica



Siga los pasos del apartado **Para acceder a Internet a través de Ethernet** de la sección **Para usuarios de tabletas y teléfonos inteligentes**.

Modo 2

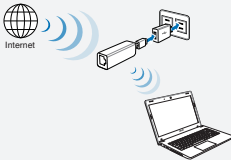
Conectar su WL-330NUL a un equipo a través de un cable Ethernet



1. Inicie el explorador y comience a navegar por Internet.

Modo 3

Enchufar su WL-330NUL a una toma de corriente eléctrica



Siga los pasos del apartado **Para acceder a Internet de forma inalámbrica** de la sección **Para usuarios de tabletas y teléfonos inteligentes**.

Modo 4

Conectar su WL-330NUL a un equipo



1. Vaya a <http://router.asus.com>.
2. Escriba el código de supervisor que aparece en la superficie de su WL-330NUL.
3. Abra la página **Wireless Setting (Configuración inalámbrica)**.
4. Seleccione una red Wi-Fi (SSID) y conéctese a Internet.



Federal Communications Commission Statement

This device complies with Part 15 of the FCC Rules. Operation is subject to the following two conditions:

- This device may not cause harmful interference.
- This device must accept any interference received, including interference that may cause undesired operation.

This equipment has been tested and found to comply with the limits for a class B digital device, pursuant to part 15 of the FCC Rules. These limits are designed to provide reasonable protection against harmful interference in a residential installation.

This equipment generates, uses and can radiate radio frequency energy and, if not installed and used in accordance with the instructions, may cause harmful interference to radio communications. However, there is no guarantee that interference will not occur in a particular installation. If this equipment does cause harmful interference to radio or television reception, which can be determined by turning the equipment off and on, the user is encouraged to try to correct the interference by one or more of the following measures:

- Reorient or relocate the receiving antenna.
- Increase the separation between the equipment and receiver.
- Connect the equipment into an outlet on a circuit different from that to which the receiver is connected.
- Consult the dealer or an experienced radio/TV technician for help.



Warning: Any changes or modifications not expressly approved by the party responsible for compliance could void the user's authority to operate the equipment. Prohibition of Co-location This device and its antenna(s) must not be co-located or operating in conjunction with any other antenna or transmitter.

FCC Mark Warning

This equipment must be installed and operated in accordance with provided instructions and the antenna(s) used for this transmitter must be installed to provide a separation distance of at least 20cm from all persons and must not be co-located or operated in conjunction with any other antennas or transmitters. End users and installers must be provided with antenna installation instructions and transmitter operating conditions for satisfying RF exposure compliance.

Prohibition of Co-location

This device and its antenna(s) must not be co-located or operating in conjunction with any other antenna or transmitter.

IMPORTANT NOTE:

Radiation Exposure Statement: This equipment complies with FCC radiation exposure limits set forth for an uncontrolled environment. End users must follow the specific operating instructions for satisfying RF exposure compliance. To maintain compliance with FCC exposure compliance requirement, please follow operation instruction as documented in this manual.





Declaration of Conformity for R&TTE directive 1999/5/EC

Essential requirements – Article 3

Protection requirements for health and safety – Article 3.1a

Testing for electric safety according to EN 60950-1 has been conducted. These are considered relevant and sufficient.

Protection requirements for electromagnetic compatibility – Article 3.1b

Testing for electromagnetic compatibility according to EN 301 489-1 and EN 301 489-17 has been conducted. These are considered relevant and sufficient.

Effective use of the radio spectrum – Article 3.2

Testing for radio test suites according to EN 300 328- 2 has been conducted. These are considered relevant and sufficient.

CE Mark Warning

This is a Class B product, in a domestic environment, this product may cause radio interference, in which case the user may be required to take adequate measures. Operation Channels: CH1~11 for N. America; Ch1~14 for Japan; CH1~13 for Europe (ETSI)

Canada, Industry Canada (IC) Notices

This Class B digital apparatus complies with Canadian ICES-003 and RSS-210.

Operation is subject to the following two conditions: (1) this device may not cause interference, and (2) This device must accept any interference, including interference that may cause undesired operation of the device.

Radio Frequency (RF) Exposure Information

The radiated output power of the ASUS Wireless Device is below the Industry Canada (IC) radio frequency exposure limits. The ASUS Wireless Device should be used in such a manner such that the potential for human contact during normal operation is minimized.

This device has been evaluated for and shown compliant with the IC Specific Absorption Rate ("SAR") limits when installed in specific host products operated in portable exposure conditions (antennas are less than 20 centimeters of a person's body).

This device has been certified for use in Canada. Status of the listing in the Industry Canada's REL (Radio Equipment List) can be found at the following web address: <http://www.ic.gc.ca/app/sitt/reitel/srch/nwRdSrch.do?lang=eng>

Additional Canadian information on RF exposure also can be found at the following web address: <http://www.ic.gc.ca/eic/site/smt-gst.nsf/eng/sf06792.html>

Canada, avis d'Industry Canada (IC)

Cet appareil numérique de classe B est conforme aux normes canadiennes ICES-003 et RSS-210.

Son fonctionnement est soumis aux deux conditions suivantes : (1) cet appareil ne doit pas causer d'interférence et (2) cet appareil doit accepter toute interférence, notamment les interférences qui peuvent affecter son fonctionnement.

Informations concernant l'exposition aux fréquences radio (RF)

La puissance de sortie émise par l'appareil de sans fil ASUS est inférieure à la limite d'





exposition aux fréquences radio d'Industry Canada (IC). Utilisez l'appareil de sans fil ASUS de façon à minimiser les contacts humains lors du fonctionnement normal.

Ce périphérique a été évalué et démontré conforme aux limites SAR (Specific Absorption Rate – Taux d'absorption spécifique) d'IC lorsqu'il est installé dans des produits hôtes particuliers qui fonctionnent dans des conditions d'exposition à des appareils portables (les antennes se situent à moins de 20 centimètres du corps d'une personne).

Ce périphérique est homologué pour l'utilisation au Canada. Pour consulter l'entrée correspondant à l'appareil dans la liste d'équipement radio (REL - Radio Equipment List) d'Industry Canada rendez-vous sur: <http://www.ic.gc.ca/app/sitt/reitel/srch/nwRdSrch.do?lang=eng>

Pour des informations supplémentaires concernant l'exposition aux RF au Canada rendez-vous sur : <http://www.ic.gc.ca/eic/site/smt-gst.nsf/eng/sf08792.html>

Industry Canada Statement

This device complies with RSS-210 of the industry Canada Rules. Operation is subject to the following two conditions:

- This device may not cause harmful interference.
- This device must accept any interference received, including interference that may cause undesired operation.

IMPORTANT NOTE:

Radiation Exposure Statement: This equipment complies with IC radiation exposure limits set forth for an uncontrolled environment. End users must follow the specific operating instructions for satisfying RF exposure compliance. To maintain compliance with IC RF exposure compliance requirement, please follow operation instruction as documented in this manual.

NCC 警語

經型式認證合格之低功率射頻電機 非經許可 公司 商號或使用者均不得擅自變更頻率 加大功率或變更原設計之特性及功能 低功率射頻電機之使用不得影響飛航安全及干擾合法通信;經發現有干擾現象時 應立即停用 並改善至無干擾時方得繼續使用。

前項合法通信 指依電信法規定作業之無線電通信 低功率射頻電機須忍受合法通信或工業 科學及醫療用電波輻射性電機設備之干擾。

REACH

Complying with the REACH (Registration, Evaluation, Authorisation, and Restriction of Chemicals) regulatory framework, we published the chemical substances in our products at ASUS REACH website at <http://csr.asus.com/english/REACH.htm>

ASUS Recycling/Takeback Services

ASUS recycling and takeback programs come from our commitment to the highest standards for protecting our environment. We believe in providing solutions for you to be able to responsibly recycle our products, batteries, other components, as well as the packaging materials. Please go to <http://csr.asus.com/english/Takeback.htm> for the detailed recycling information in different regions.





Networks Global Hotline Information

Area	Hotline Number	Support Languages	Availability
Australia	1300-2787-88	English	Mon. to Fri. 8:00-20:00
Austria	0043-820240513	German	Mon. to Fri. 9:00-18:00
Belgium	0032-78150231	Dutch /French	Mon. to Fri. 9:00-17:00
China	400-620-6655	Simplified Chinese	Mon. to Sun. 9:00-18:00
Denmark	0045-3832-2943	Danish/English	Mon. to Fri. 9:00-17:00
Finland	00358-9693-7969	Finnish/English/ Swedish	Mon. to Fri. 10:00-18:00
France	0033-170949400	French	Mon. to Fri. 9:00-17:45
Greece	00800-44-14-20-44	Greek	Mon. to Fri. 9:00-13:00 14:00-18:00
Hong Kong	3582-4770	Cantonese/ Chinese/English	Mon. to Fri. 10:00-20:00 Sat. 10:00-17:00
Indonesia	+62-21-500128	Indonesia, English	Mon. to Fri 9:30 - 17:00
Ireland	0035-31890719918	English	Mon. to Fri. 9:00-17:00
Italy	199-400089	Italian	Mon. to Fri. 9:00-13:00 14:00-18:00
Japan	0800-123-2787	Japanese	Mon. to Fri. 9:00-18:00 Sat. to Sun. 9:00-17:00



Networks Global Hotline Information

Malaysia	+603 2148 0827 (Check Repair Detail Status Only)/ +603-6279-5077	Bahasa Melayu/ English	Mon. to Fri. 10:00-19:00
Netherlands / Luxembourg	0031-591-570290	Dutch / English	Mon. to Fri. 9:00-17:00
New Zealand	0800-278-788/ 0800-278-778	English	Mon. to Fri. 9:00-17:00
Norway	0047-2316-2682	Norwegian /English	Mon. to Fri. 9:00-17:00
Philippines	+632-636 8504/ 180014410573	English	Mon. to Fri. 9:00-18:00
Poland	00225-718-033/ 00225-718-040	Polish	Mon. to Fri. 9:00-17:00 8:30-17:30
Portugal	707-500-310	Portuguese	Mon. to Fri. 9:00-17:00
Russia	+8-800-100-ASUS/ +7-495-231-1999	Russian/ English	Mon. to Fri. 9:00-18:00
Singapore	+65-6720-3835 (Check Repair Detail Status Only)/ +65-66221701	English	Mon. to Fri. 11:00-19:00
Slovak	00421-232-162-621	Czech	Mon. to Fri. 8:00-17:00
Spain	902-88-96-88	Spanish	Mon. to Fri. 9:00-18:00
Sweden	0046-8587-69407	Swedish/ English	Mon. to Fri. 9:00-18:00
Switzerland	0041-848111010	German/French	Mon. to Fri. 9:00-18:00
	0041-848111014	French	Mon. to Fri. 9:00-17:45
	0041-848111012	Italian	Mon. to Fri. 9:00-17:00



Networks Global Hotline Information

Taiwan	0800-093-456/ 02-81439000	Traditional Chinese	Mon. to Fri. 9:00-12:00 13:30-18:00
Thailand	+662-679-8367 -70/ 001 800 852 5201	Thai/English	Mon. to Fri. 9:00-18:00
Turkey	+90-216-524-3000	Turkish	Mon. to Fri. 09:00-18:00
United Kingdom	0044-870-1208340/ 0035-31890719918	English	Mon. to Fri. 9:00-17:00
USA/Canada	1-812-282-2787	English	Mon. to Fri. 8:30am-12:00am EST (5:30am-9:00pm PST) Sat. to Sun. 9:00am-6:00pm EST (6:00am-3:00pm PST)

MANUFACTURER

ASUSTeK Computer Inc.

Tel: +886-2-2894-3447

Address: 4F, No. 150, LI-TE RD., PEITOU, TAIPEI 112, TAIWAN

AUTHORISED REPRESENTATIVE IN EUROPE

ASUS Computer GmbH

Address: HARKORT STR. 21-23, 40880 RATINGEN, GERMANY

AUTHORISED DISTRIBUTORS IN TURKEY

BOGAZICI BIL GISAYAR SAN. VE TIC. A.S.

Tel: +90 212 3311000

Address: AYAZAGA MAH. KEMERBURGAZ CAD. NO.10 AYAZAGA/ISTANBUL

CIZGI Elektronik San. Tic. Ltd. Sti.

Tel: +90 212 3567070

Address: CEMAL SURURI CD. HALIM MERIC IS MERKEZI

No: 15/C D:5-6 34394 MECIDIYEKOY/ ISTANBUL

AEEE Yönetmeliğine Uygundur.

Free Manuals Download Website

<http://myh66.com>

<http://usermanuals.us>

<http://www.somanuals.com>

<http://www.4manuals.cc>

<http://www.manual-lib.com>

<http://www.404manual.com>

<http://www.luxmanual.com>

<http://aubethermostatmanual.com>

Golf course search by state

<http://golfingnear.com>

Email search by domain

<http://emailbydomain.com>

Auto manuals search

<http://auto.somanuals.com>

TV manuals search

<http://tv.somanuals.com>