

GO VISION

3-in-1 Mini Camera



User's Guide

16-3868

GETTING STARTED

About the 3-in-1 Mini Camera

Congratulations on your purchase of the 3-in-1 Mini Camera. Your Mini Camera has been ergonomically designed to let you quickly and easily capture quality digital images and short video clips without the trouble and expense of buying and developing film.

With a 1.3 Mega-Pixel image sensor, you are assured of clear images that can be printed, displayed on a web site, or sent to friends and family through e-mail. The 1.3 Mega-Pixel image sensor is capable of capturing digital still images and streaming snapshots. Using the Picture Manager interface software, the streaming snapshots from your camera will automatically be converted into digital video clips. You can also use your mini camera as a PC/web camera, taking real-time images when connected to your PC with the supplied USB cable.

The included software enables you to easily download your images and video to your PC. With Arcsoft PhotoImpression 5 and VideoImpression 2 software you can edit your images and video with ease. For more information on how to use Arcsoft PhotoImpression 5 and VideoImpression 2, you may visit their website at www.Arcsoft.com.

What's Included

Open the 3-in-1 Mini Camera package and examine the contents. Your package should contain the following items:

- 3 in 1 Mini Camera
- Neck Strap
- USB Cable
- Two Color Faceplates
- Quick Start Guide
- Software CD containing:
 - Picture Manager (TWAIN driver)
 - Arcsoft PhotoImpression5
 - Arcsoft VideoImpression2
 - This User's Guide (in the CD)
 - Adobe Reader 7.0

Trademark Recognition

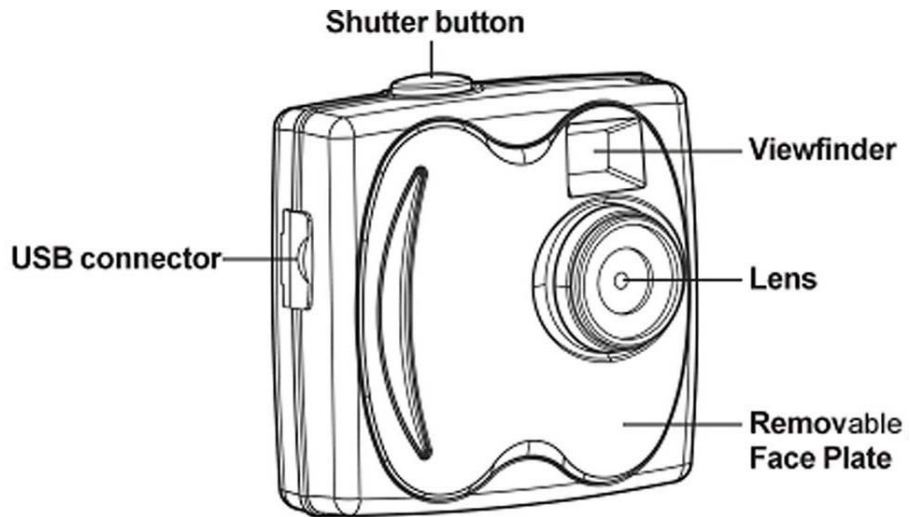
Windows (an abbreviated term referring to the Microsoft Windows Operation System), NetMeeting, and Media Player are registered trademarks and products of Microsoft Corporation registered in the USA and other countries. Arcsoft PhotoImpression5 and Arcsoft VideoImpression2 are products and trademarks of Arcsoft Inc. Other corporate, product names, or trade references are trademarks or registered trademarks of their respective companies.

Table of Contents

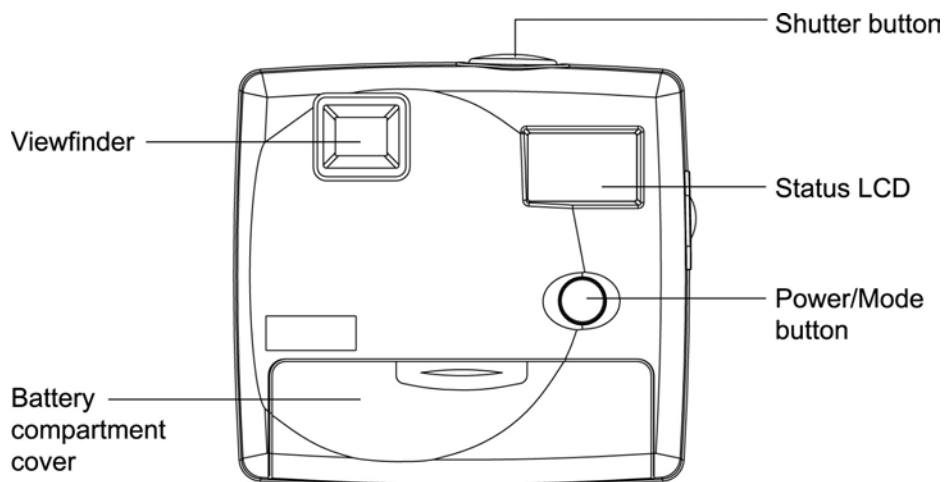
GETTING STARTED	2
ABOUT THE 3-IN-1 MINI CAMERA	2
What's Included	2
CAMERA FEATURES	4
Front View	4
Rear View	4
INSTALLING A BATTERY AND CHANGING A FACEPLATE	5
FASTENING THE NECK STRAP	5
CAPTURING IMAGES	6
TURNING THE CAMERA ON AND OFF	6
LCD INFORMATION/STATUS DISPLAY	6
CAMERA ICONS AND DESCRIPTIONS	7
CAPTURING DIGITAL STILL IMAGES	8
CAPTURING STREAMING SNAPSHOTS (VIDEO CLIPS)	8
DELETING IMAGES AND VIDEOS	9
SOFTWARE INSTALLATION	10
SYSTEM REQUIREMENTS	10
SOFTWARE OVERVIEW & FEATURES	10
Picture Manager (TWAIN)	10
Arcsoft PhotoImpression5.....	10
Arcsoft VideoImpression2.....	10
INSTALLING THE DIGITAL CAMERA DRIVER SOFTWARE	11
INSTALLING THE PHOTOIMPRESSON 5 AND VIDEOIMPRESSON 2	12
CONNECTING TO YOUR PC	13
CONNECTING YOUR MINI CAMERA TO YOUR PC	13
DOWNLOADING IMAGES AND VIDEOS TO YOUR PC	15
USING THE TWAINAPP TO TRANSFER IMAGES AND VIDEOS	15
USING PHOTOIMPRESSON 5 TO TRANSFER IMAGES	16
USING YOUR MINI CAMERA AS A PC/WEB CAMERA	17
VIEWING VIDEO CLIPS WITH WINDOWS MEDIA PLAYER	17
VIDEO CONFERENCING WITH NETMEETING	18
HOW TO USE YOUR MINI CAMERA WITH MICROSOFT NETMEETING	18
QUICK TIPS	19
CAPTURING IMAGES INDOORS – GENERAL TIPS	19
CAPTURING IMAGES OUTDOORS – GENERAL TIPS	19
SPECIFICATIONS	20
TROUBLESHOOTING	21
FCC DECLARATION OF CONFORMITY	21
THE FCC WANTS YOU TO KNOW	22

Camera Features

Front View



Rear View

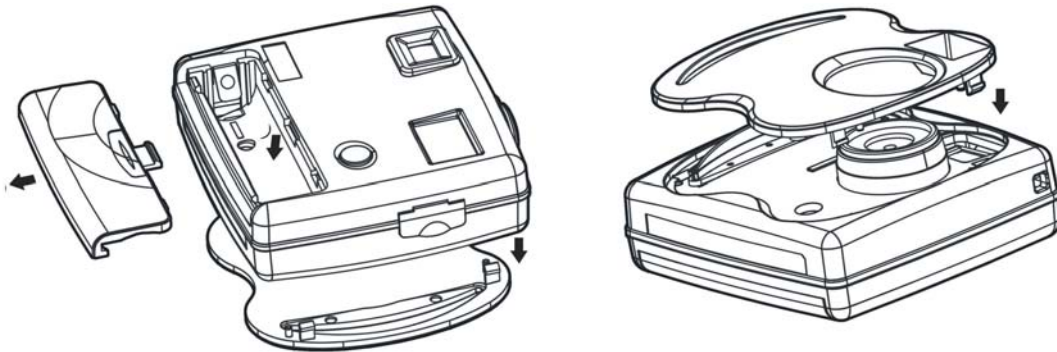


Installing a Battery and Changing a Faceplate

Your Mini Camera requires one AAA battery (not supplied) for power. For the best performance and longest battery life, we recommend an alkaline battery. Your mini camera also comes with two additional color faceplates for replacement.

1. Slide off the battery compartment cover.
2. If you need to replace the faceplate, insert the tip of a ballpoint pen into the hole inside the battery compartment to push the faceplate out of the camera. Place a new faceplate over the front of the camera then snap it into place.

Note: If you do not need to replace the faceplate for now, skip this step.




3. Insert one AAA alkaline battery, matching the polarity symbols (+ and -) marked inside.
4. Replace the battery compartment cover.

Note: If you have images stored in the camera, be sure to download them before you change the faceplate or replace the battery to avoid losing images or video clips.

Battery Notes:

- Dispose of the old battery promptly and properly.
- Do not burn or bury the battery.
- Use only a fresh battery of the required size and recommended type.
- Battery can leak chemicals that may destroy electronic parts. If you do not plan to use the camera for more than two weeks, remove the battery.

When  flashes, the camera beeps and automatically turns off. Replace the battery within 30 seconds to avoid losing your images.

IMPORTANT WARNINGS:

- Do not open the battery compartment when the camera is turned on. Doing so may result in image loss.
- Store your pictures before you take out batteries and be sure to download your images to your computer. Loss of image data will occur if the battery loses power.
- When replacing the battery, install a new one within 30 seconds to avoid losing stored images. We recommend you download images within 24 hours.

Fastening the Neck Strap

Squeeze the two release tabs to separate the fastener from the neck strap. Thread the fastener's small loop through the hole on the camera, and use a clip to pick the small loop out of the hole. Then, slip the fastener through the small loop. Pull the small loop to tighten it and then connect the fastener to the end of neck strap.

CAPTURING IMAGES

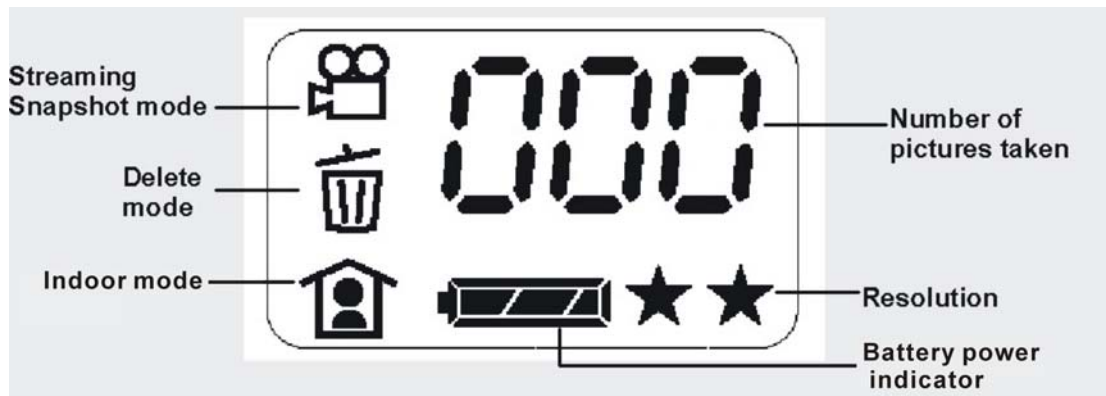
Turning the Camera On and Off

To turn on the camera, hold down the **Power/Mode** button until **on** displays briefly. The camera beeps once, and then **000** appears. To turn off the camera, hold down the Power/Mode button again.

Note: Your Mini Camera automatically turns off after **60 seconds** of inactivity.

LCD Information/Status Display

The following icons are used in the Information/Status LCD display to present mode and setting options.



Note: When scrolling through the modes, an icon blinks when it is selected.

Camera Icons and Descriptions

To select your desired setting, press the **Power/Mode** button to scroll through the different modes. The icons will display in the status LCD. Press the **Shutter** button to select a function while it is displayed. The camera is now ready to capture an image or streaming snapshots according to your selected preferences.

Note: If you do not press any button within five seconds, the LCD screen automatically returns to the operational mode screen – ready to capture an image.

Icon	Description
	Number of images and videos captured
HI ★★	High Resolution mode (HI and two-stars) <ul style="list-style-type: none"> 1280 x 1008 pixels for still images
LO ★	LOW Resolution mode (LO and one-star) <ul style="list-style-type: none"> 640 x 480 pixels for still images
	Indoor mode to capture images indoors, or in darker environments
	Outdoor mode to capture images outside
	Streaming Snapshot mode for capturing Video Clips <ul style="list-style-type: none"> The Movie Icon with one-star indicates 320 x 240 video resolutions. The Movie Icon and no-star indicates 160 x 120 video resolutions.
	ERASE ALL - to erase ALL images and videos saved in the camera
	ERASE LST - to erase the LAST image saved in the camera
	Full Battery Level indicator
	Low battery indicator
PC	Displays when the camera is connected to a computer
Full	Displays the camera's memory size is full

Capturing Digital Still Images

Note: Be sure the camera has enough battery power before taking pictures. Observe the battery power indicator and replace the battery when its power is low.

1. Hold down the **Power/Mode** button until **on** displays briefly. The camera beeps once and the function screen displays.

Default
Setting



(No images, indoor light, full battery, highest resolution)

2. Repeatedly press the **Power/Mode** button until the desired resolution setting displays, and then press the **Shutter** button to confirm the setting. The main screen displays.

HI and ★★

Select the 1280 x 1008 pixel resolution for the best image quality.

LO and ★

Select the 640 x 480 pixel resolution for fair image quality, but you can capture more images using the built-in memory.

3. Repeatedly press the **Power/Mode** button until the desired indoor or outdoor setting displays, and then press the **Shutter** button to confirm the setting. The main screen displays.



Indoor: Use when inside a building or the ambient light is low.



Outdoor: Use when capturing images outdoors.

4. Look through the viewfinder and focus on the image you want to capture. Hold the camera still and press the **Shutter** button to take a picture. A short beep sounds when a picture is taken. The photo number in the photo counter increases.

Capturing Streaming Snapshots (Video Clips)

1. Hold down the **Power/Mode** button to turn on the camera.
2. Repeatedly press the **Power/Mode** button to select the desired streaming snapshot mode. Then, press the **Shutter** button. The function screen displays.
3. Repeatedly press the **Power/Mode** button to select the desired movie resolution setting. Then, press the **Shutter** button to confirm the setting. The function screen displays.



320 x 240

[No Icon]

160 x 120

4. Repeatedly press the **Power/Mode** button to select the indoor or outdoor setting, and then press the **Shutter** button.



Indoor: Use when inside a building or when the ambient light is low.



Outdoor: Use when outdoors.

5. Look through the viewfinder and hold down the **Shutter** button to capture streaming snapshots. You will hear continuous beeps as the images are recorded. When you finish, release the **Shutter** button. The digit on the display counter advances.

Deleting Images and Videos

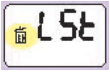
The Delete function allows you delete images or video clips saved in the internal memory of your mini camera.

Repeatedly press the **Power/Mode** button until the desired Delete mode displays.



Delete **ALL** images and Videos:

To delete all images and video clips, hold down the **Shutter** button until you hear 2 beeps.



Delete the **LAST** image or video capture:

To delete the last image or video clip, hold down the **Shutter** button until you hear 2 beeps.

SOFTWARE INSTALLATION

System Requirements

Windows

- Windows 98, 98SE, ME, 2000, or XP
- 200 MHz Pentium or better
- 64MB RAM
- 310MB available Hard Drive space
- CD-ROM
- USB Port

Software Overview & Features

The supplied CD includes the following software and applications to enhance your digital imaging experience. The Picture Manager (TWAIN) software helps you download the images and video from your digital camera to your computer. The Arcsoft PhotoImpression 5 and Arcsoft VideoImpression 2 are photo and video editing applications.

Picture Manager (TWAIN)

The Picture Manager works with TWAIN-compliant third-party software. The Picture Manager allows you to quickly view, edit the images (e.g., crop, rotate, flip), and save them to your computer.

Arcsoft PhotoImpression5

- Acquire, organize, view, browse and share photos fast
- Provides powerful tools for photo editing and enhancing
- Create slideshows with music, calendars and greeting cards

Arcsoft VideoImpression2

- Create 360° and Wide-angle panoramas in just 3 steps
- Helpful Wizard simplifies project setup
- Automated warping, aligning, and blending deliver great results fast
- Directly output to e-mail, the Web, office documents, screen savers and printers

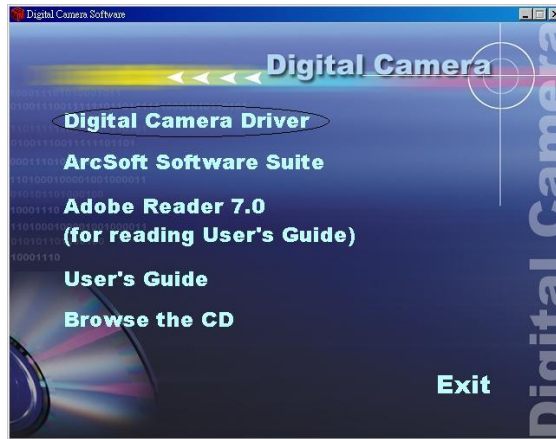
Installing the Digital Camera Driver Software

Note: (For Windows 98SE users ONLY!)

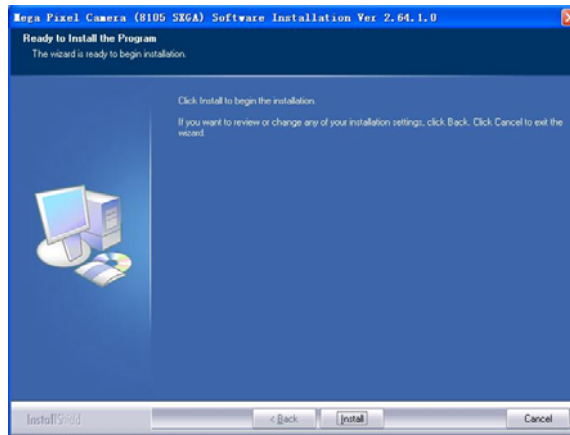
You may encounter a message during software installation due to an old version of DirectX installed on your computer. Select "No" and continue with the installation. This will not affect the operation of your computer.

1. Insert the DIGITAL CAMERA software CD into your CD-ROM drive. The CD runs automatically, and the DIGITAL CAMERA installation menu displays. Click "Digital Camera Driver".

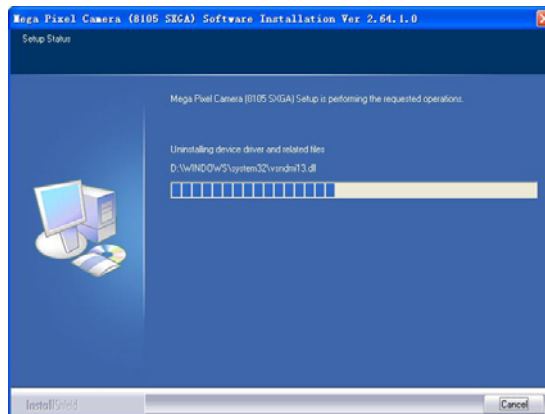
Note: If the CD does not run automatically, click "Start", "Run", then type "D:\autorun.exe" in the **Run Dialog** text box (where D:\ is your CD-ROM drive).



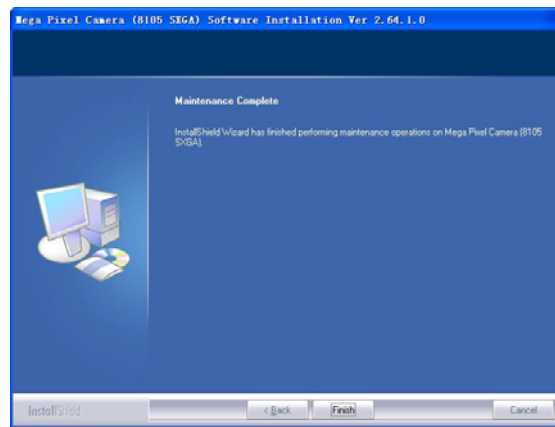
2. "Start InstallShield Wizard" displays briefly. Then, the following screen displays. Click "Install" to start the installation.



3. The installation begins and the setup status displays.



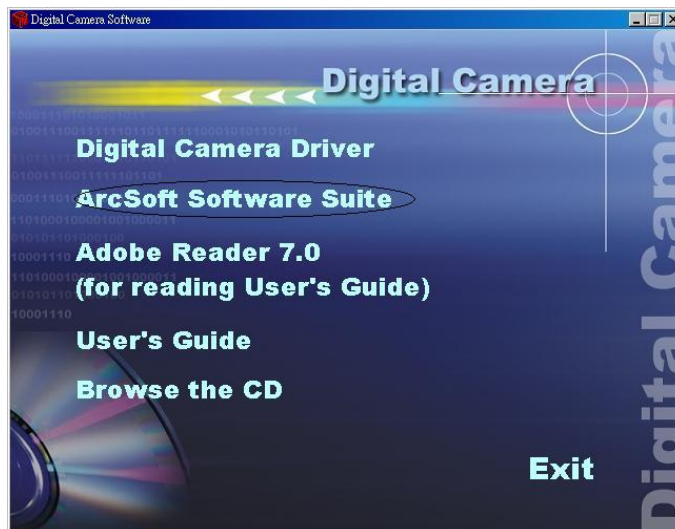
4. When the installation is complete, click "Finish".



Installing the PhotoImpression 5 and VideoImpression 2

Note: For more information about PhotoImpression 5 and VideoImpression 5, please visit the Arcsoft Web site at www.Arcsoft.com

1. Go to the "Digital Camera" screen and click on "ArcSoft Software Suite".



2. Follow the on-screen instructions to complete installing the ArcSoft software.

CONNECTING TO YOUR PC

Connecting Your Mini Camera to Your PC

Note: Before you connect your mini camera to your PC, you **must** have installed the TWAIN driver.

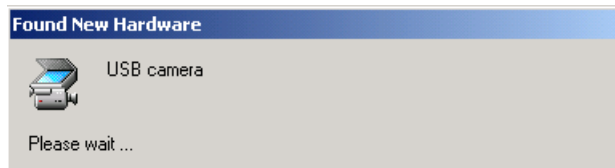
1. Hold down the **Power/Mode button** to turn off the camera.
2. Lift up the USB port cover.
3. Plug the smaller connector of the USB cable into your camera's USB port.
4. Plug the larger connector of the USB cable to your computer's USB port.

Note: Windows will prompt you to install hardware drivers the first time you connect your mini camera to your PC after installing the software. Insert the supplied CD ROM into your CD ROM drive and follow the on-screen instructions. If you subsequently connect the camera to a different USB port on your PC, it may go through the hardware installation routine once again.

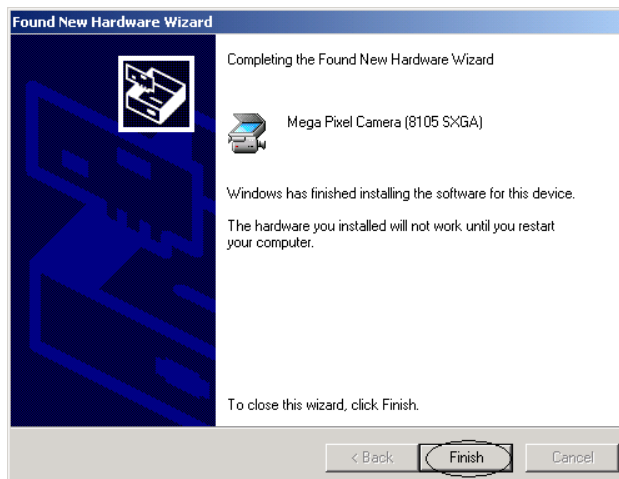
5. Your PC now detects the camera.

The camera displays **PC** in the LCD to indicate it is connected to your computer.

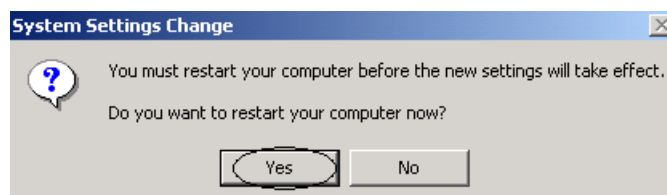
6. Follow the on-screen instructions to complete installing the hardware drivers (video and still).



7. Click "Finish".



8. Click "Yes" to restart the computer.



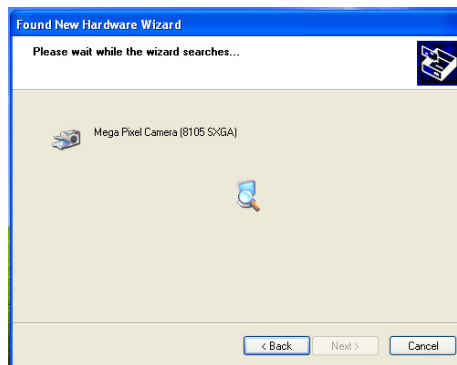
To Windows XP users only:



When the camera is connected to your PC for the first time, the computer will recognize the new device and display a "Found New Hardware" message. You must wait while the computer identifies your camera. If you have already installed the software, the information window will display the name of the device connected. If you have not installed the software, disconnect the camera from your computer and follow the directions under "Installing the Digital Camera Driver Software".



- The Found New Hardware Wizard will begin automatically. Make sure "Install the software automatically" is selected, and click Next.



- Windows will begin to search for the necessary drivers on your system. These were installed with the software. When your computer locates the drivers, it may display the following message:

Windows XP only:



- Click Continue Anyway. Your camera has been thoroughly tested and will work with your system.

DOWNLOADING IMAGES AND VIDEOS TO YOUR PC

Using the TwainApp to Transfer Images and Videos

Note: Before you connect the camera to your PC, you **must** install the TWAIN driver.

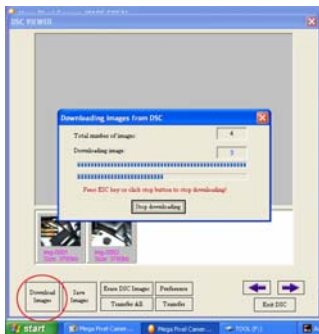
1. Click Start, Program, and Mega Pixel Camera (8105 SXGA), and then TwainApp.



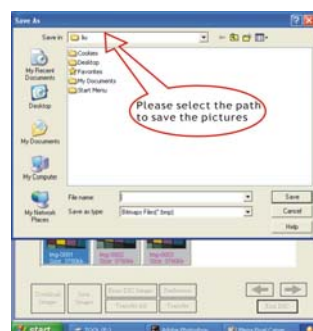
2. Click on "Get DSC" to browse the pictures in the camera.



3. Click on "Download" to download the pictures.



4. When you complete downloading, click on "Transfer All" and then select a path to store the pictures. You can save pictures in either bitmap or jpg format. Saving pictures in an jpg format occupies less memory capacities than saving pictures in a bitmap format.



Using PhotoImpression 5 to Transfer Images

Follow the instructions below to transfer the pictures using PhotoImpression 5.

1. Launch PhotoImpression 5 application: Start → Programs → Arcsoft Software Suite → PhotoImpression 5



2. Select "Camera/Scanner" and then click "Mega Pixel Camera (8105 SXGA)". Then the TwainApp will be called out for you to transfer images and videos.
3. The Picture Manager allows you to view each individual image saved on your camera. You can use the arrow keys to scroll to the previous or the next picture. Click on the "Transfer" button to download the images to your computer.

Notes:

1. Turn off the camera before you remove the battery.
2. Download your images before removing the battery and faceplate.

USING YOUR MINI CAMERA AS A PC/WEB CAMERA

You also can use your mini camera as a PC/Web camera.

Use the supplied USB cable to connect your mini camera to your PC. The camera turns on automatically. Then, place your mini camera on the top of your monitor or any level surface at a higher position to let the camera lens face the computer user.

Viewing Video Clips with Windows Media Player

If your computer is equipped with Windows Media Player (Windows 2000, ME and XP), you can use the Windows Media Player to view your video by double clicking on the video clip.

Note: *If you need to install the latest version of Windows Media Player, you can download Media Player free of charge from Microsoft Web site at:*
<http://www.microsoft.com/windows/windowsmedia/download/default.asp>

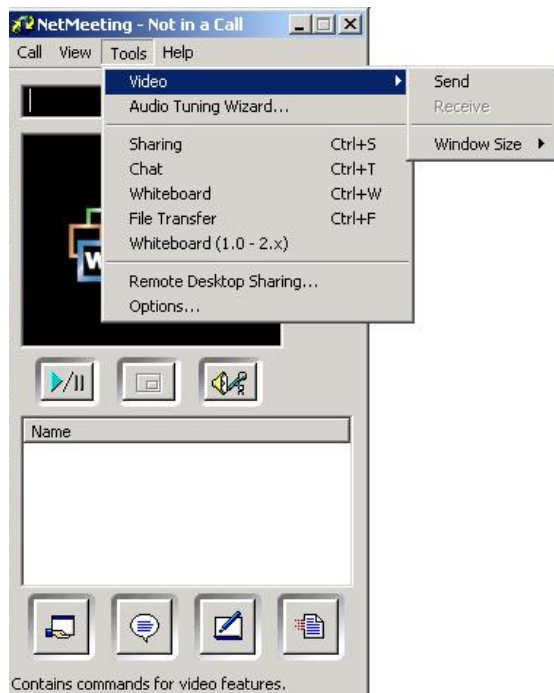
For questions regarding Windows Media Player, please contact Microsoft Media Player help.

VIDEO CONFERENCING WITH NETMEETING

How to Use your mini camera with Microsoft NetMeeting

Your Mini Camera can be used with Microsoft NetMeeting. Follow these instructions:

1. Connect your mini camera to your computer using the USB cable. The camera turns on automatically.
2. Go to Start > Programs > Accessories > Communications > NetMeeting to launch NetMeeting.
3. When the NetMeeting screen displays, click the **Tools** menu, select Video and click "Send". A video window opens (My Video). You can start and stop sending video using the controls on this window.



Note: For more information on using NetMeeting and to download the latest version, browse the Microsoft Web site at <http://www.microsoft.com/windows/netmeeting/>

You can also use your mini camera as a video conferencing camera with popular Instant Messengers, such as Microsoft MSN with NetMeeting, Yahoo! Messenger, and AOL Instant Messenger (AIM). For details on how to use individual instant messaging programs, please contact the service provider directly.

QUICK TIPS

Capturing Images Indoors – General Tips

- Try to capture images in an area full of colors and patterns. If taking a picture of a person, make sure the clothing does not have a high contrast to the background (e.g. white shirt against black background).
- Depending on the subject and the indoor conditions, it is generally better to have the light source at an angle (e.g. 45 degrees) from the subject instead of directly in front of or directly behind the subject.
- Avoid an area where a wall is the main portion of the image.
- Avoid light sources positioned directly behind or directly in front of your subject.
- Normally indoor lighting is diffused. Therefore, avoid bright light sources when taking a picture. A large variation in the lighting of a scene (e.g. shaded hallway and bright entryway) can cause improper exposure.
- Don't shoot directly towards light or the sun.
- Try to avoid any mixture of different lighting, such half sunlight and half-fluorescent light.
- Images of a computer screen may include lines and artifacts.
- Avoid an object in the image that could reflect light or one that is close to the person taking the image (e.g. glass bottle, white shirt, glasses, etc.).

Capturing Images Outdoors – General Tips

- Try to capture images in an outdoor setting full of colors and patterns.
- It is better to have the subject facing the sunlight instead of having their back facing the sunlight.
- Try to position your subject close to the center of the image.
- Avoid taking an image on a shiny surface or reflective area in the image (e.g. glass, metal).
- Do not capture images of high-contrast with both shaded and sun-lit areas together. While your mini camera does adjust for this, it is unable to adjust for vast differences in lighting as compared to the human eye.

SPECIFICATIONS

Specifications are typical; individual units might vary. Specifications are subject to change and improvement without notice. Individual units may vary.

Image Sensor	1.3M Pixels (1280x1024) CMOS Sensor
Lens Specification	F 2.8, f = 8.79 mm (43mm Equivalent to 35mm Film)
Focusing	Fixed Focus 0.9m ~ infinity
Shutter	1/15~1/1500 sec. (Electronic Shutter) Auto Control
Viewfinder	Virtual Type: Optical, Magnification 0.32 or Higher, Coverage: 80% or Higher
White Balance	Auto
Exposure Control	Auto
Storage	Built-in 8MB SDRAM
Storage Capacity(8MB)	★★ 2 stars: 1280 x 1008 Pixels 16 Pictures ★ 1 star: 640 x 480 Pixels 64 Pictures Video Clip: 320 x 240 Pixels 30 Seconds
PC Camera Mode	10~12fps @ 640 x 480; 25~30fps@320 x 240 via USB Stream to PC
Output File Format	JPEG File (Still), AVI File (Video)
Display	Black and White Status LCD
PC Interface	USB 1.1 (Mini-USB Connection Direct to PC)
Power	AAA 1.5V Alkaline Battery x 1 (Not Supplied)
Battery Life	Approximately 100 Pictures at Fine Mode, 400 Pictures at Basic Mode
Auto Power Saving	System Auto Power Off: 60 sec.
Dimension (HWD)	2 1/16" x 2 3/16" x 7/8" (53 x 56 x 21mm)
Weight	1.18 oz (33.5 g) (Without Battery)
System Compatibility	Microsoft Windows 98/ 98SE / 2000 / ME / XP
System Requirements	200 MHz Pentium or better, 64MB RAM, 310MB Available Hard Drive Space, USB Port & CD-Rom Drive
Bundled Software	Arcsoft PhotoImpression 5, Arcsoft VideoImpression 2, Camera Driver
Drivers	TWAIN
Certifications	FCC/CE
Accessories	Quick Start Guide, USB Cable, Neck Strap CD-ROM including Driver and Photo Editing Software

TROUBLESHOOTING

Problem	Possible cause	Solution
The camera has no power.	The battery is depleted.	Replace the battery with a new one.
	The battery is inserted incorrectly.	Check the battery's polarity orientation.
	Is the camera connected to a computer?	The camera's buttons do not work when the camera connects to a PC. Disconnect the camera.
The camera won't capture an image.	Is the camera turned on?	The camera turns off automatically after approximately one minute. Make sure the camera's power is turned on before taking an image.
	Is the camera connected to a computer?	The camera's buttons do not work when the camera connects to a PC. Disconnect the camera. Use the TWAIN driver utility to capture an image while connected to a PC.
The images are blurry.	The camera or subject was moving when the image was captured.	Hold the camera steadily to capture images. The minimum focus distance is about two feet. Objects closer than 2 feet will not be in focus.
The image is too light.	You are facing a bright light when taking the image.	Change the angle of the image so the bright lights do not shine directly towards the camera lens.

FCC Declaration of Conformity

This device complies with part 15 of the FCC rules. Operation is subject to the following conditions: (1) this device may not cause harmful interference. (2) this device must accept any interference received, including interference that may cause undesired operation.

PRODUCT:	3-IN-1 Camera
MODEL:	16-3868
RESPONSIBLE PARTY:	RadioShack 300 RadioShack Circle Fort Worth, TX 76102 USA
PHONE:	817-415-3200



The FCC Wants You to Know

This equipment has been tested and found to comply with the limits for a Class B digital device, pursuant to Part 15 of the FCC Rules. These limits are designed to provide reasonable protection against harmful interference in a residential installation. This equipment generates, uses and can radiate radio frequency energy and, if not installed and used in accordance with the instructions, may cause harmful interference to radio communications. However, there is no guarantee that interference will not occur in a particular installation. If this equipment does cause harmful interference to radio or television reception, which can be determined by turning the equipment off and on, the user is encouraged to try to correct the interference by one or more of the following measures:

- Reorient or relocate the receiving antenna.
- Increase separation between the equipment and receiver.
- Connect the equipment into an outlet on a circuit different from that to which the receiver is connected.
- Consult your local RadioShack store or an experienced radio/TV technician for help.

If you cannot eliminate the interference, the FCC requires that you stop using your camera. Changes or modifications not expressly approved by RadioShack may cause interference and void the user's authority to operate the equipment.

Limited 90-day Warranty

This product is warranted by RadioShack against manufacturing defects in material and workmanship under normal use for ninety (90) days from the date of purchase from RadioShack company-owned stores and authorized RadioShack franchisees and dealers. For complete warranty details and exclusions, check with your local RadioShack store.

300 RadioShack Circle,
Fort Worth, TX 76102

04/05

16-3868
07A05
Printed in China

Free Manuals Download Website

<http://myh66.com>

<http://usermanuals.us>

<http://www.somanuals.com>

<http://www.4manuals.cc>

<http://www.manual-lib.com>

<http://www.404manual.com>

<http://www.luxmanual.com>

<http://aubethermostatmanual.com>

Golf course search by state

<http://golfingnear.com>

Email search by domain

<http://emailbydomain.com>

Auto manuals search

<http://auto.somanuals.com>

TV manuals search

<http://tv.somanuals.com>