



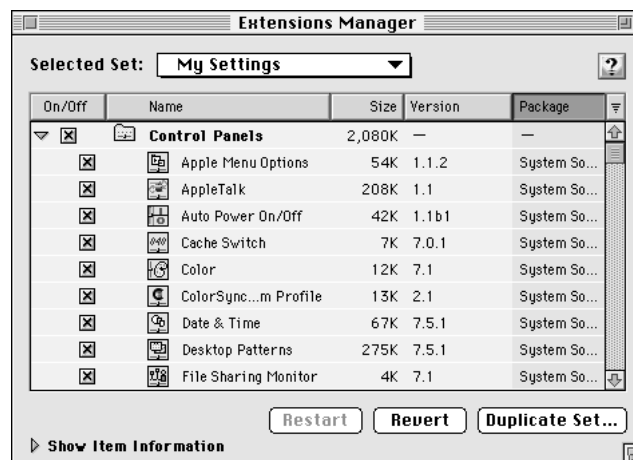
Update: About Your Computer's System Software

Your computer's hard disk contains Mac OS 7.6.1, an updated version of system software recently released by Apple Computer. Apple regularly updates the Mac OS to deliver new features and to improve performance and reliability. The new features of Mac OS 7.6.1 make it easier to connect to the Internet, enhance your computer's multimedia capabilities, and increase your productivity. This document describes some of the most recent advances. It also shows the new look given to some software items that appear in your computer's user manual.

References in the computer's manual still apply to setup, basic software use, the CD-ROM drive, and other hardware issues. Continue to use that manual when questions come up, when you need troubleshooting tips, or if you ever need to reinstall the computer's system software.

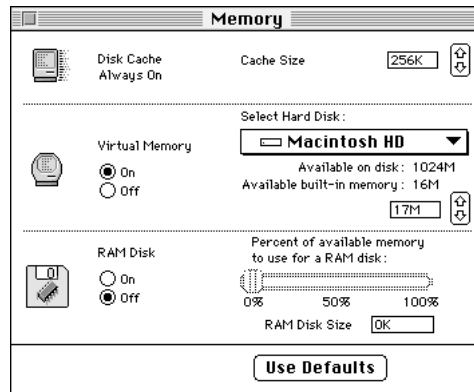
Utility and desktop software

- Apple System Profiler, which is available in the Apple () menu, provides detailed information about your current hardware and software configuration.
- New version of the Extensions Manager control panel: This improved version makes it easier to turn extensions on and off. It also provides detailed information about each software item listed, makes it easier to create sets of extensions, and features a By Package command you can use to group items used by specific software components.



Memory

- New Memory control panel: The enhanced version of this control panel looks different from the one shown in the computer's manual.



Printing

- Desktop printing: When you select a printer in the Chooser, an icon for that printer appears on the desktop. You can quickly print documents from the Finder by dragging a document icon to a desktop printer icon. To check the status of a document that's waiting to print, double-click the desktop printer icon.



LaserWriter

- New Printing dialog box: A new LaserWriter driver offers a streamlined interface when you use a LaserWriter printer. If you use a LaserWriter printer and select the LaserWriter 8 driver in the Chooser, you see a revised dialog box when you choose the Print command. To use advanced options, choose from the pop-up menus that appear in the dialog box.

A screenshot of the LaserWriter printing dialog box. At the top, there are two dropdown menus: "Printer:" set to "LaserWriter" and "Destination:" set to "Printer". Below these is a "General" tab. The "Copies:" field is set to "1". The "Pages:" section has "All" selected with a radio button, and "From:" and "To:" fields are empty. The "Paper Source:" section has "All pages from:" selected with a radio button, and a dropdown menu set to "Cassette". Below it, "First page from:" and "Remaining from:" are also set to "Cassette" via dropdown menus. At the bottom, there are three buttons: "Save Settings", "Cancel", and "Print".

Free Manuals Download Website

<http://myh66.com>

<http://usermanuals.us>

<http://www.somanuals.com>

<http://www.4manuals.cc>

<http://www.manual-lib.com>

<http://www.404manual.com>

<http://www.luxmanual.com>

<http://aubethermostatmanual.com>

Golf course search by state

<http://golfingnear.com>

Email search by domain

<http://emailbydomain.com>

Auto manuals search

<http://auto.somanuals.com>

TV manuals search

<http://tv.somanuals.com>