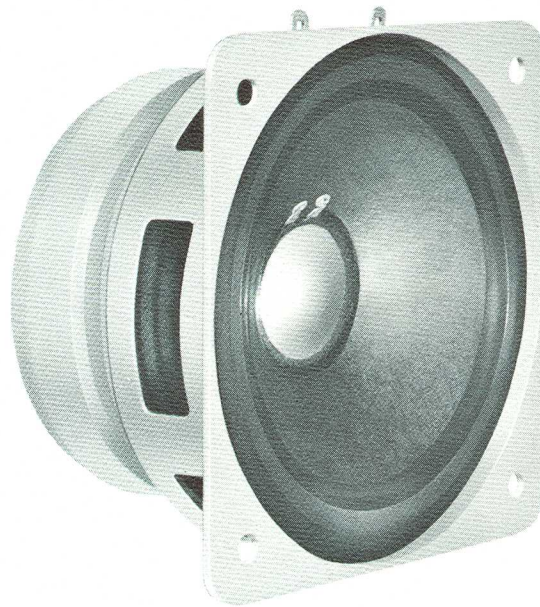
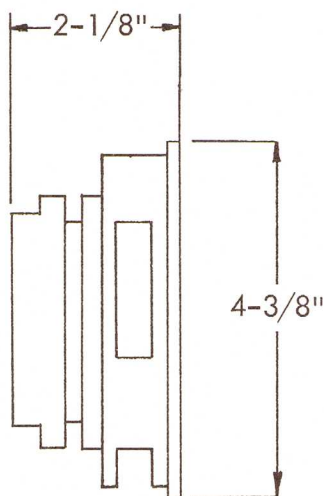


405A Dia - Cone Loudspeaker

T.M.

405A



Features:

10 Watts Rating

90° Distribution Angle

60-15,000 Hz Response

4" Speaker

Water Resistant Cone

Thin Profile for Shallow Mounting

High Sensitivity and Efficiency
with Indox V Magnet

Front or Rear Mounting

EIA Standard Mounting for
Square Shaped Speakers

Low Cost

Smooth Frequency Response

Ideal for Multiple Installations

Distortion Free Under
High Humidity

**HIGH QUALITY PA AND BACKGROUND MUSIC SYSTEM SPEAKERS
IDEAL FOR LOW LEVEL INSTITUTIONAL USES, BUSES, CRUISERS,
AIRPORT SOUND SYSTEMS, COMMERCIAL AND PRIVATE AIRCRAFT,
CHURCH PEWS, NARROW FACIA BOARD
— PEAK PERFORMANCE IN A LIMITED MOUNTING SPACE —**

The Altec 405A Speaker is an extremely shallow, very compact 4" speaker that provides true high fidelity reproduction. Using an Indox V magnet with a flux density of 10,250 gauss, the damped, high compliance cone provides low frequency reproduction and smooth, extended frequency response equal to most larger speakers. The compact size of the 405A Speaker makes it ideal for public address systems in airports, buses, ships, aircraft, church pews and any installation that has need for a low level distribution system for wired music, program distribution and paging systems. Very smooth distribution is provided over a wide angle of 90° without high frequency loss. The wide angle of distribution, plus the small size of the unit allows greater separation between speakers with a substantial savings in speakers required. Clear, intelligible speech and good music reproduction is assured because of the extended 60 to 15,000 Hz range.

Made of heavy grade steel, the entire 405A unit is designed for continuous, trouble-free service. The small size of the speaker, 4 3/8" square by 2 1/8" deep make it possible to either front mount or rear mount the speaker in wall, partitions or ceilings and into volumes as low as 0.1 cubic feet. The solid, welded construction and water-resistant cone of the 405A prevents distortion in areas of high humidity.

In line with other Altec speakers, the famed experience and engineering "know-how" has been built into the 405A Speaker, to make it the highest quality 4" loudspeaker available.



A Division of  Ling Altec, Inc.

1515 S. Manchester Ave., Anaheim, Calif. 92803
New York

ALTEC 405A

SPECIFICATIONS

Power:	10 Watts music power	Flux:	10,250 gauss
Frequency Response:	60-15,000 Hz	Terminals:	Solder lug type
Pressure Sensitivity:	92 dB (SPL at 4 ft.) from 1 Watt*	Size:	4 $\frac{3}{8}$ x 4 $\frac{3}{8}$ (square) x 2 $\frac{1}{8}$ deep
E.I.A. Sensitivity:	45 dB	Mounting Data: Baffle opening	3 $\frac{13}{16}$ " diameter — Rear mounted
Impedance:	8 Ohms		4 $\frac{5}{32}$ " front mounted
Cone Resonance:	95 Hz	Mounting bolt centers	(4) equally spaced holes at 90° on 4 $\frac{13}{16}$ " diameter circle (.200 dia. holes)
Voice Coil Diameter:	1"		
Distribution:	90°	Weight:	2 $\frac{1}{6}$ lbs.
Magnet: Type	Indox V		
Structure weight	1 $\frac{3}{4}$ lbs.		

*equivalent to EIA rating of 45 dB at 30 feet from 1 milliwatt

ARCHITECTS AND ENGINEER SPECIFICATIONS

The speaker shall be 4 $\frac{3}{8}$ " square and shall have a sensitivity of 92 dB (SPL at 4 ft. from 1 Watt) measured on axis. The loudspeaker shall have a nominal impedance of 8 Ohms and a power rating of not less than 10 Watts with the frequency response uniform over the range of 60 to 15,000 Hz. Free air resonance shall not be higher than 70 Hz.

The voice coil shall have a diameter of 1" and shall operate in a magnetic field of at least 10,250 gauss derived from a magnet of Indox V having a weight of 1 $\frac{3}{4}$ lbs. The speaker terminals shall be of the solder lug type. The speaker shall weight 2 $\frac{1}{6}$ lbs. and shall be able to perform efficiently in a volume as low as 0.1 cubic feet. It shall have a solid, welded construction and water resistant cone (to prevent distortion in high humidity areas).

Any loudspeaker not meeting these requirements shall not be acceptable under this specification.

The loudspeaker shall be Altec Lansing Model 405A.

NOTICE

We recommend that you obtain your Altec products from factory trained authorized Altec Sound Contractors and Distributors. This will assure you of proper installation, a continuing source of knowledgeable advice, service, and quick warranty protection.

Free Manuals Download Website

<http://myh66.com>

<http://usermanuals.us>

<http://www.somanuals.com>

<http://www.4manuals.cc>

<http://www.manual-lib.com>

<http://www.404manual.com>

<http://www.luxmanual.com>

<http://aubethermostatmanual.com>

Golf course search by state

<http://golfingnear.com>

Email search by domain

<http://emailbydomain.com>

Auto manuals search

<http://auto.somanuals.com>

TV manuals search

<http://tv.somanuals.com>