

# **Wireless Client Configuration Guide**

for third-party wireless Ethernet adapters

## **Notice to Users**

©2002 2Wire, Inc. All rights reserved. This manual in whole or in part, may not be reproduced, translated, or reduced to any machine-readable form without prior written approval.

2WIRE PROVIDES NO WARRANTY WITH REGARD TO THIS MANUAL, THE SOFTWARE, OR OTHER INFORMATION CONTAINED HEREIN AND HEREBY EXPRESSLY DISCLAIMS ANY IMPLIED WARRANTIES OF MERCHANTABILITY OR FITNESS FOR ANY PARTICULAR PURPOSE WITH REGARD TO THIS MANUAL, THE SOFTWARE, OR SUCH OTHER INFORMATION, IN NO EVENT SHALL 2WIRE, INC. BE LIABLE FOR ANY INCIDENTAL, CONSEQUENTIAL, OR SPECIAL DAMAGES, WHETHER BASED ON TORT, CONTRACT, OR OTHERWISE, ARISING OUT OF OR IN CONNECTION WITH THIS MANUAL, THE SOFTWARE, OR OTHER INFORMATION CONTAINED HEREIN OR THE USE THEREOF.

2Wire, Inc. reserves the right to make any modification to this manual or the information contained herein at any time without notice. The software described herein is governed by the terms of a separate user license agreement.

Updates and additions to software may require an additional charge. Subscriptions to online service providers may require a fee and credit card information. Financial services may require prior arrangements with participating financial institutions.

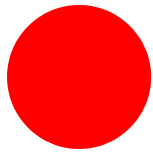
2Wire, the 2Wire logo, and HomePortal are trademarks of 2Wire, Inc. All other trademarks are trademarks of their respective owners.

---

## Wireless Client Configuration Guide

Introduction .....	1
Locate the serial number and wireless encryption key .....	1
Agere ORiNOCO PC Card - Silver or Gold .....	2
Cisco Aironet .....	6
D-Link Air DWL-650 .....	9
Apple AirPort card .....	11
Other wireless Ethernet adapters .....	12
Wireless configuration with Windows XP .....	13





# Wireless adapter configuration

## Introduction

After your 802.11b wireless adapter is installed in your computer, you must configure it to communicate with the HomePortal. This guide describes how to configure the following wireless Ethernet (IEEE 802.11b) adapters to operate with the HomePortal:

- Agere (ORiNOCO PC Card Silver or Gold)
- Cisco (Aironet 340 Series 11Mbps Wireless LAN Adapter)
- D-Link Air DWL-650
- Apple AirPort card
- Other third-party wireless Ethernet cards

***Note:** The instructions for Agere, Cisco, and D-Link cards are for computers running Windows 98. The instructions for the Apple card are for computers running MacOS 9.0. Because not all Windows and Macintosh versions respond to new hardware in the same way, screens may appear in a different order and may have a slightly different appearance than the screens shown in these instructions.*

## Locate the serial number and wireless encryption key

Your HomePortal is configured with unique security parameters that must be configured into your wireless adapter.

On the bottom of your HomePortal you will find two important pieces of information required for configuring your adapter: the serial number and the wireless encryption key.



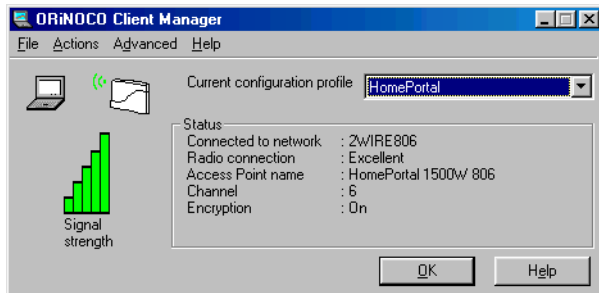
After you have located the serial number and wireless encryption key, perform the following steps to configure your wireless adapter.

## Agere ORiNOCO PC Card - Silver or Gold

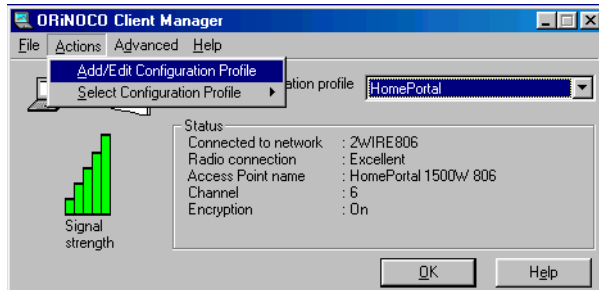
Consult the documentation provided with your wireless adapter to install the Agere ORiNOCO PC Card - Silver or Gold, then follow these steps:

1. From the Start menu, select **Programs > ORiNOCO > Client Manager**.

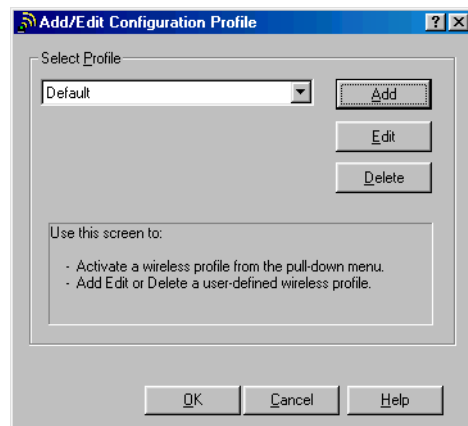
The ORiNOCO Client Manager screen appears.



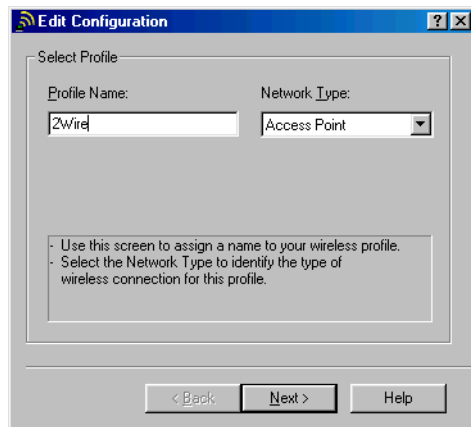
2. From the Actions menu, select **Add/Edit Configuration Profile**.



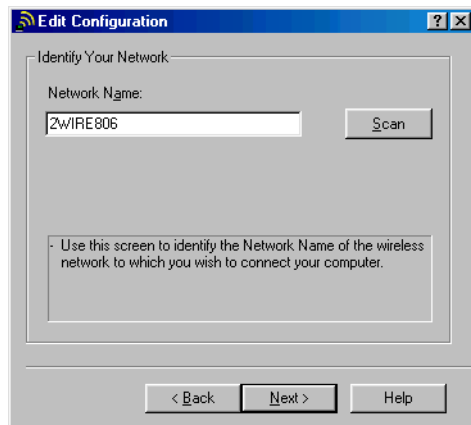
3. The Add/Edit Configuration Profile screen appears.



- To create your profile, click **Add**. The Edit Configuration screen appears. Enter a profile name in the Profile Name field. The profile name identifies your wireless profile, and should be no more than 29 characters in length.

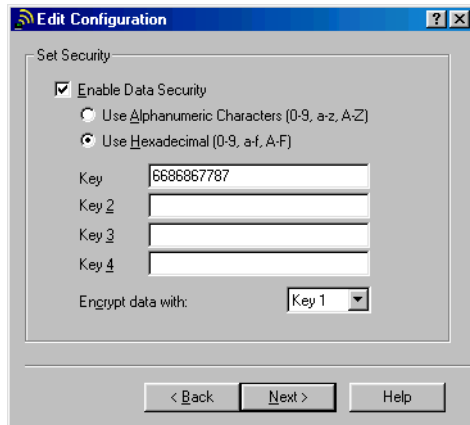


- From the Network Type pulldown menu, select **Access Point**.
- To identify your network, click **Next**. The Edit Configuration screen appears.

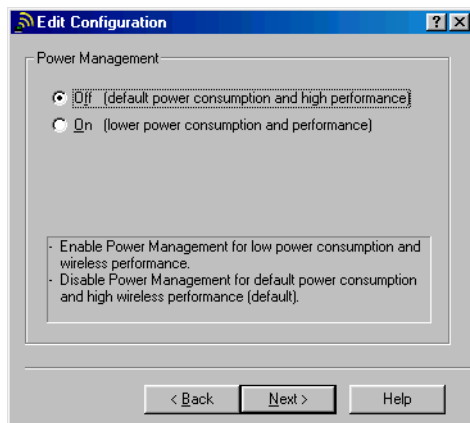


- In the Network Name field, enter the word “**2WIRE**” followed by the last three digits of your HomePortal serial number, located on the bottom of your HomePortal. This is the Wireless Network Name. The Wireless Network Name is case-sensitive, so it is important that you enter the word “**2WIRE**” in capital letters.

- Click **Next**. In the Set Security field, check the **Enable Data Security** checkbox. Verify that the **Use Hexadecimal (0-9, a-f, A-F)** radio button is selected.



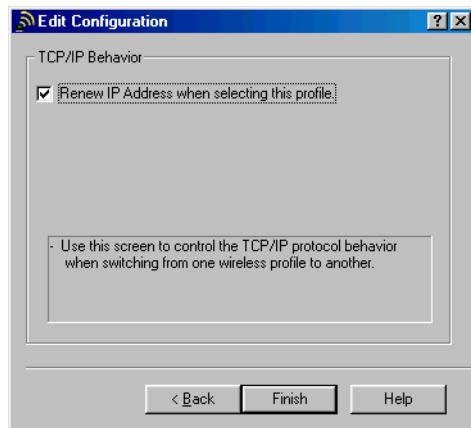
- In the Key field, enter your ten-digit Wireless Encryption Key, located on the bottom of your HomePortal.
- Verify that **Key 1** is selected in the **Encrypt data with** pulldown menu (this is the default).
- To select a power management option, click **Next**. The following screen appears.



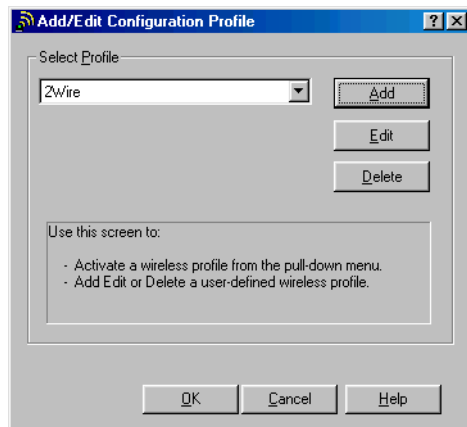
- Select the power management option that you wish to use (the default is **Off**), and click **Next**.



13. In the TCP/IP Behavior field, check the **Renew IP Address when selecting this profile** checkbox.



14. Click **Finish**. The following screen appears.

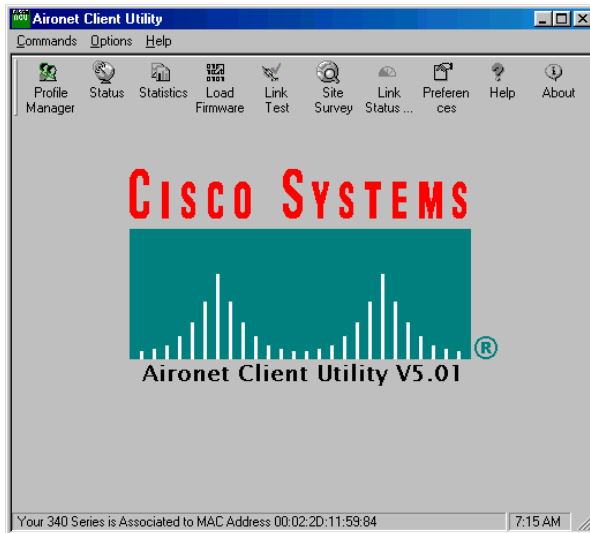


15. Click **OK**.

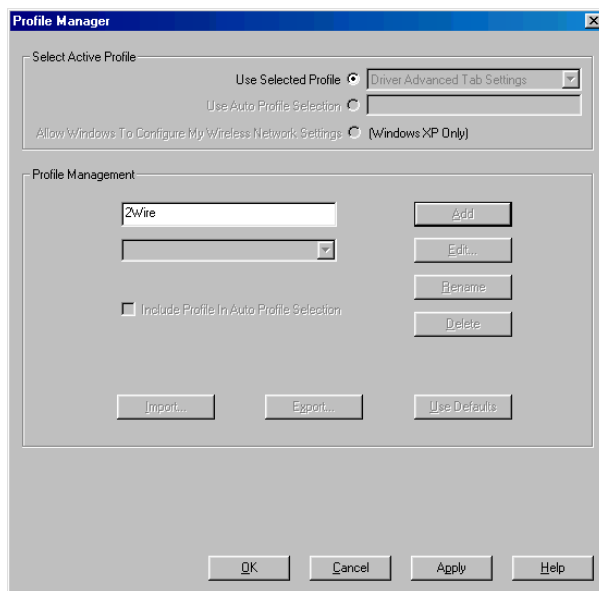
## Cisco Aironet

Consult the documentation provided with your wireless card to install the Cisco Aironet adapter, then follow these steps:

1. Double-click the Aironet Client Utility icon on your desktop. The Aironet Client Utility screen appears.

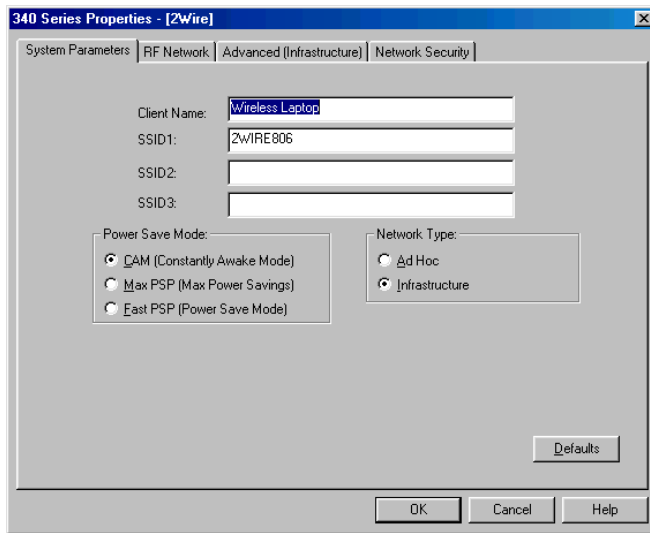


2. Click the **Profile Manager** button. The Profile Manager screen appears.
3. Click **Add**.
4. In the Profile Management field, enter your profile name. The profile name identifies your wireless profile, and should be no more than 29 characters in length.

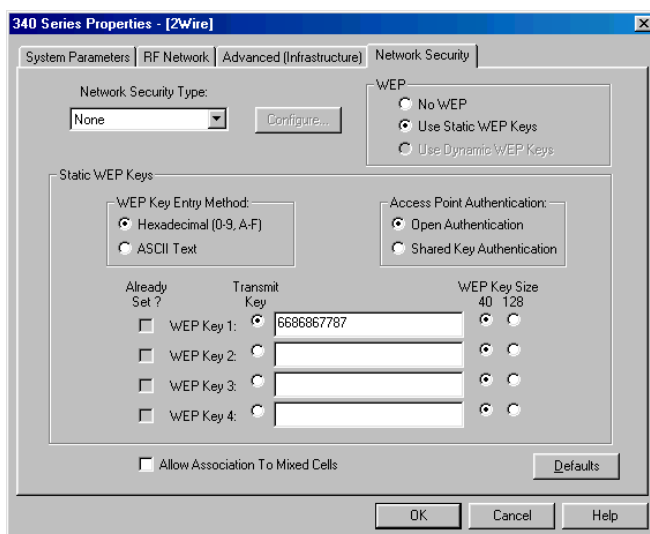


5. Click **Apply**. The 340 Series Properties screen appears.

6. Select the **System Parameters** tab. In the Client Name field, enter a client name. The client name identifies your PC.

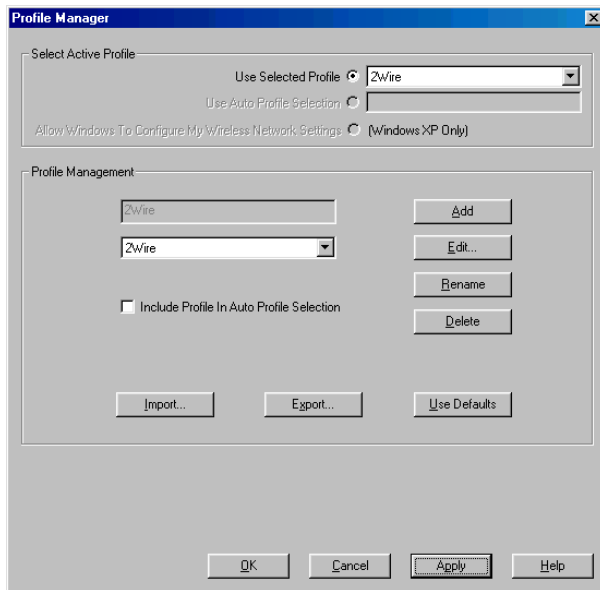


7. In the SSID1 field, enter the word “**2WIRE**” followed by the last three digits of your HomePortal serial number. This is the Wireless Network Name. The Wireless Network Name is case-sensitive, so it is important that you enter the word “**2WIRE**” in capital letters.
8. In the Power Save Mode field, verify that the **CAM (Constantly Awake Mode)** radio button is selected (this is the default).
9. In the Network Type field, verify that the **Infrastructure** radio button is selected (this is the default).
10. Select the Network Security tab. In the WEP field, select the **Use Static WEP Keys** radio button.



11. In the WEP Key Entry Method field, verify that the **Hexadecimal (0-9, A-F)** radio button is selected.
12. In the WEP Key 1 field, select the **Transmit Key** radio button and enter your ten-digit Wireless Encryption Key, located on the bottom of your HomePortal.

13. Click **OK**. The Profile Manager screen appears. Your profile name should now appear in the second line of the Profile Management field, indicating that your Cisco adapter is properly configured.

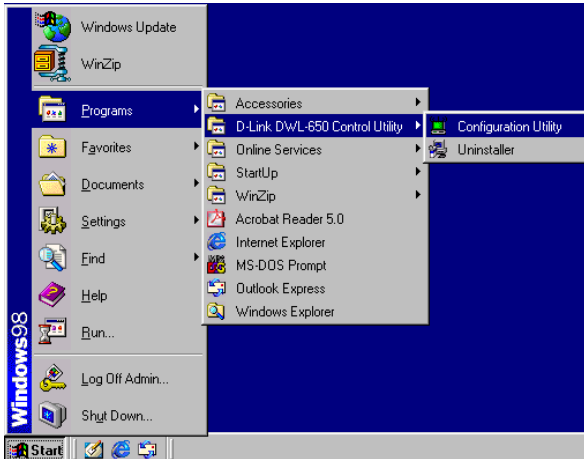


14. Click **OK**.

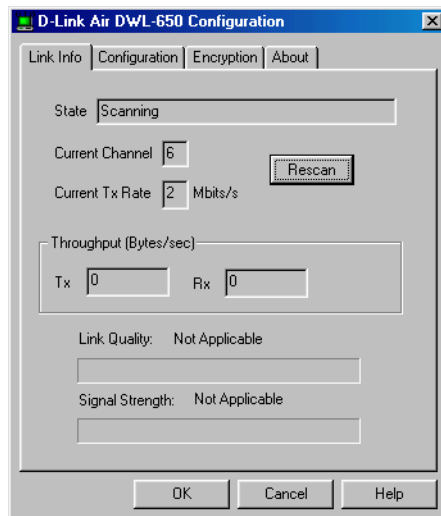
## D-Link Air DWL-650

Consult the documentation provided with your wireless adapter to install the D-Link Air DWL-650, then follow these steps:

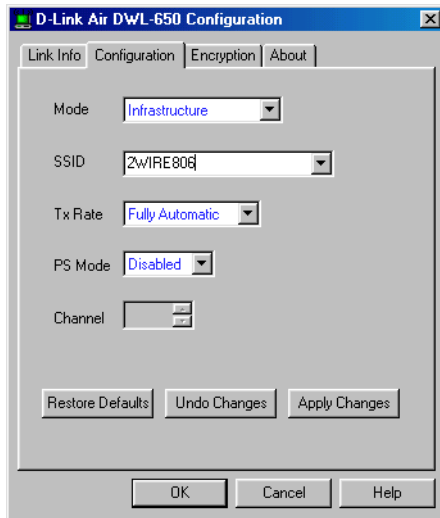
1. From the Start menu, select **Programs > D-Link DWL-650 Control Utility > Configuration Utility**.



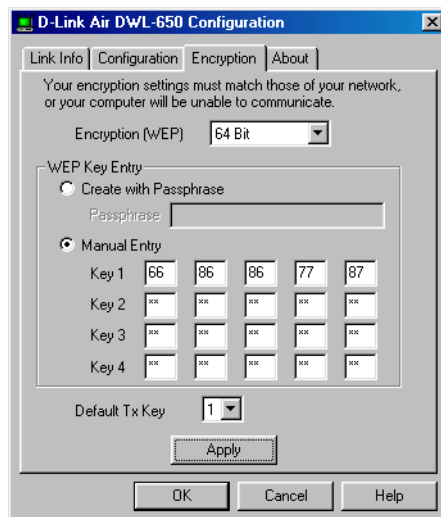
2. The D-Link Air DWL-650 Configuration screen appears.



3. Select the Configuration tab.



4. In the Mode field, enter **Infrastructure**.
5. In the SSID field, enter the word “**2WIRE**” followed by the last three digits of your HomePortal serial number. This is the Wireless Network Name. The Wireless Network Name is case-sensitive, so it is important that you enter the word “**2WIRE**” in capital letters.
6. In the Tx Rate pulldown menu, verify that **Fully Automatic** is selected (this is the default).
7. In the PS Mode pulldown menu, verify that **Disabled** is selected (this is the default).
8. Click **Apply Changes**.
9. Select the Encryption tab.



10. From the Encryption (WEP) pulldown menu, select **64 Bit**.
11. In the WEP Key Entry field, select the **Manual Entry** radio button.
12. In the Key 1 field, enter your ten-digit Wireless Encryption Key, located on the bottom of your HomePortal.

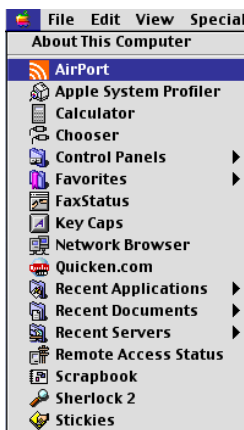
13. From the Default Tx Key pulldown, select **1**.
14. Click **Apply**.
15. Click **OK**.

## Apple AirPort card

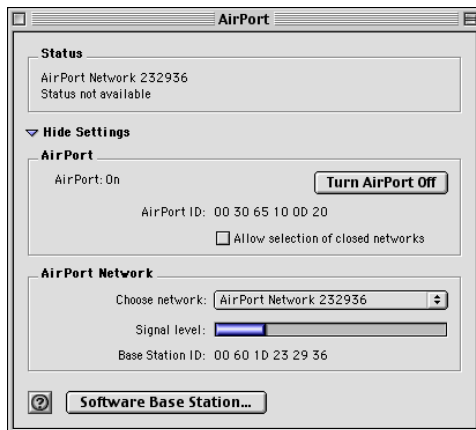
*Note:* Requires AirPort client software revision 2.0 or greater.

Consult the documentation provided with your wireless adapter to install the Apple AirPort wireless adapter, then follow these steps:

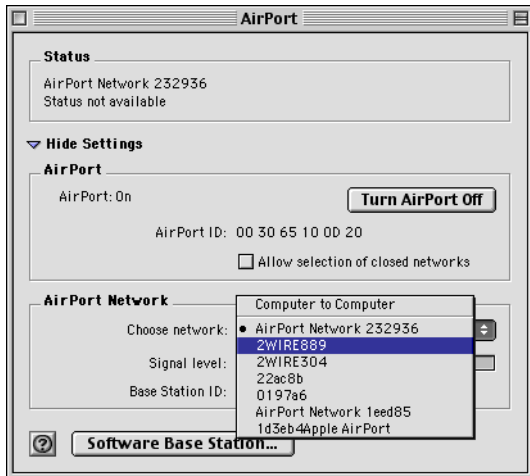
1. From the Apple pull-down menu, select **AirPort** to open the AirPort dialog box.



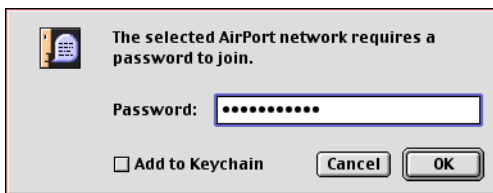
2. In the AirPort Network panel, click the **Choose Network** pull-down menu.



3. Select your wireless network name. Your wireless network name is “**2WIRE**” followed by the last three digits of your HomePortal serial number, located on the bottom of your HomePortal.



4. In the Password field, enter “\$” followed by your ten-digit Wireless Encryption Key, located on the bottom of your HomePortal.



5. Click **OK**.

## Other wireless Ethernet adapters

*Note:* The following steps are completed using the configuration program provided with your wireless adapter. If you have not already done so, install the wireless adapter configuration software before continuing.

1. Set the network type to **Infrastructure**. Refer to your wireless card documentation for instructions on editing the card’s network profile. Your wireless card should be configured to operate with an access point or residential gateway. This mode of operation is typically enabled by setting network type to Infrastructure.
2. Set the wireless network name. The wireless network name of your HomePortal is **2WIRE** in all capital letters, followed by the last three digit of the HomePortal serial number located on the bottom of your HomePortal. For example, if the last three digits of your HomePortal serial number are 102, your HomePortal network name would be 2WIRE102.

The wireless network name is sometimes referred to as the **Network Name**, **SSID**, **ESS ID**, or **Wireless LAN ID**.



3. Enable wireless security. Your HomePortal is pre-configured to take advantage of wireless security. Referring to the instructions provided with your wireless card, enable wireless security.

Wireless security is sometimes referred to as **WEP** (wired equivalent privacy), **64-bit encryption**, or **40-bit encryption**.

4. Enter the encryption key. Once you have enabled security on your wireless card, you need to enter the unique security key for your HomePortal. To do this, set the network encryption type to **hexadecimal**, and enter your 10-digit wireless encryption key found on the bottom of your HomePortal.
5. In general, accept your card's defaults. The default value for the remainder of configurable settings for your network card should allow your wireless card to communicate with the HomePortal. Although the HomePortal is set by default to communicate using channel 6, it is not required to change your card to this setting as most cards will automatically detect the appropriate channel.

## Wireless configuration with Windows XP

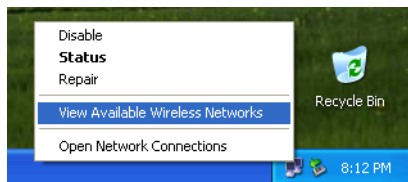
*Note: The following steps are completed using the configuration program provided with Windows XP. If you have not already done so, install the wireless adapter configuration software before continuing. Make sure that the drivers for your adapter support Windows XP.*

Windows XP is designed to handle wireless configuration in a generic manner, provided that the manufacturer's drivers support Windows XP.

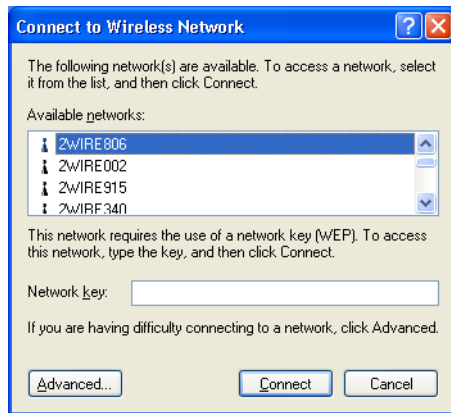
1. Right-click the **Wireless Network Connection** icon, located in the systray.



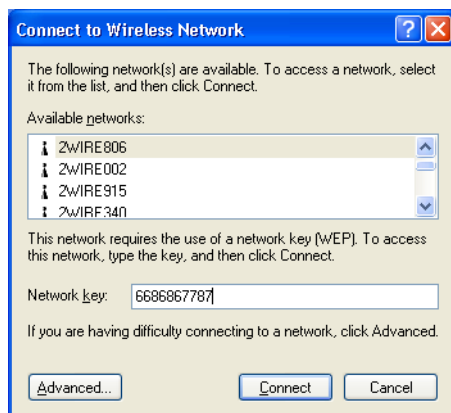
2. Select **View Available Wireless Networks**.



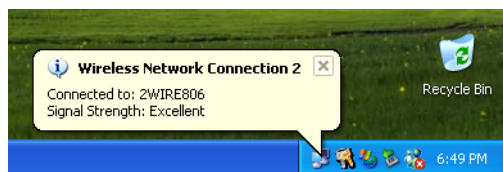
- The Connect to Wireless Network screen appears. In the **Available networks** field, select your wireless access point. The wireless access point displays as “**2WIRE**” in all capital letters, followed by the last three digits of the HomePortal serial number (located on the bottom of your HomePortal).



- In the **Network key** field, enter your ten-digit Wireless Encryption Key, located on the bottom of your HomePortal.



- Click **Connect**.
- A notification message now appears next to the **Wireless Network Connection** icon indicating that your wireless adapter is connected to your network.





## Free Manuals Download Website

<http://myh66.com>

<http://usermanuals.us>

<http://www.somanuals.com>

<http://www.4manuals.cc>

<http://www.manual-lib.com>

<http://www.404manual.com>

<http://www.luxmanual.com>

<http://aubethermostatmanual.com>

Golf course search by state

<http://golfingnear.com>

Email search by domain

<http://emailbydomain.com>

Auto manuals search

<http://auto.somanuals.com>

TV manuals search

<http://tv.somanuals.com>