

B9136 Copier/Printer
B9125 Copier/Printer
B9110 Copier/Printer
B9100 Copier/Printer

User Guide (For AirPrint)

Thank you for selecting our product.

This guide describes how to operate AirPrint, and provides information on the precautions you should follow during operation. Be sure to read this guide before use.

This guide assumes that you know the basic facts and operation methods of your machine. For information on how to operate the machine, refer to the User Guide provided with each machine.

Mac, Mac OS, MacBook, MacBook Air, iMac, OS X, macOS, iPad, iPhone, iPod touch, Bonjour are trademarks of Apple Inc., registered in the U.S. and other countries.

AirPrint and the AirPrint Logo are trademarks of Apple Inc.

All product/brand names are trademarks or registered trademarks of the respective holders.

Important

1. This manual is copyrighted with all rights reserved. Under the copyright laws, this manual may not be copied or modified in whole or part, without the written consent of the publisher.
2. Parts of this manual are subject to change without prior notice.
3. We welcome any comments on ambiguities, errors, omissions, or missing pages.
4. Never attempt any procedure on the machine that is not specifically described in this manual.

Unauthorized operation can cause faults or accidents. Fuji Xerox is not liable for any problems resulting from unauthorized operation of the equipment.

An export of this product is strictly controlled in accordance with Laws concerning Foreign Exchange and Foreign Trade of Japan and/or the export control regulations of the United States.

Xerox, Xerox and Design, as well as Fuji Xerox and Design are registered trademarks or trademarks of Xerox Corporation in Japan and/or other countries.

Apeos is a registered trademark of Fuji Xerox Co., Ltd.

Table of Contents

Table of Contents.....	2
About AirPrint.....	3
Overview of AirPrint.....	3
Operating Environment	3
Environment Settings	5
Machine Settings.....	5
CentreWare Internet Services Settings	5
Computer Settings (For macOS/OS X only)	7
Printing.....	9
Printing from iOS.....	9
Printing from macOS/OS X.....	11
Faxing.....	12
Scanning.....	13
Problem Solving.....	15
Problems on Selecting the Printer	15
Problems on Printing.....	15
Error Code.....	16
Notes and Restrictions.....	17
Index.....	18

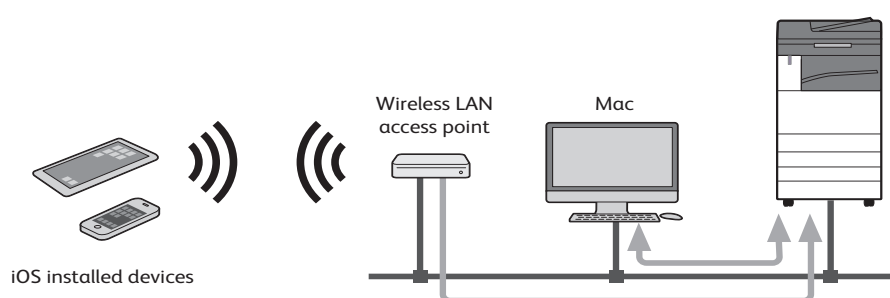
About AirPrint

Overview of AirPrint



AirPrint is a printing service provided by Apple Inc. By using AirPrint, you can request a document print instruction to the machine from macOS/OS X computers or iOS installed devices such as iPad/iPhone, without installing any print drivers or special software. You can also fax and scan documents using macOS/OS X computers.

- Note**
- The information about AirPrint herein is as of February 2018. For the latest information, refer to Apple Inc. website.



Operating Environment

This feature operates in the following environment:

Supported Models

The following shows the AirPrint-compatible models.

■ **Models that support printing (including printing via USB connection), faxing, and scanning**

- B9136/B9125/B9110/B9100 Copier/Printer*
- ApeosPort-VI C7771/C6671/C5571/C4471/C3371/C3370/C2271
- DocuCentre-VI C7771/C6671/C5571/C4471/C3371/C3370/C2271

*The Fax services are not available.

■ **Models that support printing (not including printing via USB connection)**

- DocuCentre-V C2265/C2263
- ApeosPort-V 3065/3060/2060
- DocuCentre-V 3065/3060/2060
- ApeosPort-V C7776/C6676/C5576/C4476/C3376/C3374/C2276
- DocuCentre-V C7776/C6676/C5576/C4476/C3376/C3374/C2276

- ApeosPort-V C7775/C6675/C5575/C4475/C3375/C3373/C2275
- DocuCentre-V C7775/C6675/C5575/C4475/C3375/C3373/C2275
- ApeosPort-V C7780/C6680/C5580
- DocuCentre-V C7780/C6680/C5580
- ApeosPort-V 5070/4070
- DocuCentre-V 5070/4070
- ApeosPort-V C3320, DocuPrint CM415 AP
- ApeosPort-V 4020, DocuPrint M465 AP
- ApeosPort-V 7080/6080
- DocuCentre-V 7080/6080
- DocuPrint 5105 d

- Note**
- The models listed above are as of February 2018. They are subject to change without notice.
 - Airprint is supported by the Type 2 (T2) models of ApeosPort-V C7775/C6675/C5575/C4475/C3375/C3373/C2275, DocuCentre-V C7775/C6675/C5575/C4475/C3375/C3373/C2275, ApeosPort-V C7780/C6680/C5580, and DocuCentre-V C7780/C6680/C5580. For information on how to distinguish the version of models, refer to the User Guide or Administrator Guide.
 - The products may not be available in some countries.
 - Wi-Fi capable AirPrint printers must be connected to the same home Wi-Fi network as your iOS device or Mac.

Supported Operating Systems

The following shows the latest OS with which we confirmed AirPrint operates.

- Print
macOS Sierra (MacBook, MacBook Air, iMac, and others) and
iOS 10 (iPad, iPhone, and iPod touch)
- Fax and scan
macOS Sierra (MacBook, MacBook Air, iMac, and others)

Environment Settings

This section explains how to set the environment for using AirPrint.

Machine Settings

This section describes several points that need to be set by system administrator. Check the proper settings below from [Tools] before you enable AirPrint.

■ Protocol Settings

- Set IP address, subnet mask, and gateway address from [System Settings] > [Connectivity & Network Setup] > [Protocol Settings] to use the machine in TCP/IP environment.

CentreWare Internet Services Settings

AirPrint Setting

AirPrint setting is required when your machine uses AirPrint.

- 1 Start a web browser from a network connected computer.
- 2 Enter the machine's IP address into the address box on the browser, and then press the <Enter> key. Connection to CentreWare Internet Services is established.

Note • During connection/operation, pop-up screen for user ID/passcode entry may appear. In this case, enter a system administrator's user ID/passcode and click [OK].
- 3 Select the [Properties] tab > [Connectivity] > [Protocols] > [AirPrint].
- 4 Configure the following settings and click [Apply].

Items		Contents
General	AirPrint	Check the checkbox to enable AirPrint. Note • The checkbox is checked by factory default.
	USB Connection	Check the checkbox to enable AirPrint. When [USB Connection] is enabled, some features may not work well. When not using AirPrint via USB communication, uncheck the checkbox.
Bonjour	Printer Name	Enter the name of the machine up to 62 single-byte characters.
	Location	Enter the device location up to 255 single-byte characters.
	Geographical Coordinates	Enter the longitude and latitude of the place where the machine is. Enter the longitude between -90.000000 and 90.000000, and the latitude between -180.000000 and 180.000000.

Items		Contents
IPP Authentication	Basic Authentication	Check the checkbox to use the IPP authentication.
	User Name	Enter the name of the user who is allowed to use Airprint. Enter the name of the machine up to 32 single-byte characters
	Password	Type the password up to 32 single-byte characters.
	Retype Password	Retype the password up to 32 single-byte characters.
Machine Digital Certificate	Machine Digital Certificate Management	Click the [Settings] button to display the [Machine Digital Certificate Management] screen. On this screen, you can create a certificate or import a certificate created on external tool or organization. For information on how to configure the setting, refer to the help of CentreWare Internet Services.
Consumables	Consumables	Click the [Check Status] button to display the [Consumables] screen. For more information on the [Consumables] screen, refer to the help of CentreWare Internet Services.
Print Job Handling when Data Error Occurs	Print Job Handling when Data Error Occurs	Configure the way to handle the error of AirPrint data. Select [Cancel Print Job] or [Force Print Job].

- 5 Rebooting request is displayed on the web browser. Click [Reboot Machine].
- 6 Click [OK] in the confirmation screen. The machine will reboot, and the settings will be reflected.

When Using Different Networks (For macOS/OS X only)

Wide-Area Bonjour setting is required when your machine and the computer are using different networks, and are communicating via router.

This section describes how to make Wide-Area Bonjour settings to the machine.

- Note**
- This setting is unnecessary when the machine and the computer are using the same network.
 - For information on how to make settings for macOS/OS X or DNS server, check with your network administrator.

- 1 Start a web browser from a network connected computer.
- 2 Enter the machine's IP address into the address box on the browser, and then press the <Enter> key. Connection to CentreWare Internet Services is established.

Note
 - During connection/operation, pop-up screen for user ID/passcode entry may appear. In this case, enter a system administrator's user ID/passcode and click [OK].
- 3 Select the [Properties] tab > [Connectivity] > [Protocols] > [Bonjour]. Then check [Enabled] in [Wide-Area Bonjour], and click [Apply].
- 4 Rebooting request is displayed on the web browser. Click [Reboot Machine].
- 5 Click [OK] in the confirmation screen. The machine will reboot, and the settings will be reflected.

- 6 Select the [Properties] tab > [Connectivity] > [Protocols] > [TCP/IP]. Then make the following settings, and click [Apply].
 - DNS Server Address: Your DNS server address
 - DNS Domain Name: Your DNS domain name
 - Dynamic DNS Registration (IPv4/IPv6): Enabled
- 7 Rebooting request is displayed on the web browser. Click [Reboot Machine].
- 8 Click [OK] in the confirmation screen. The machine will reboot, and the settings will be reflected.

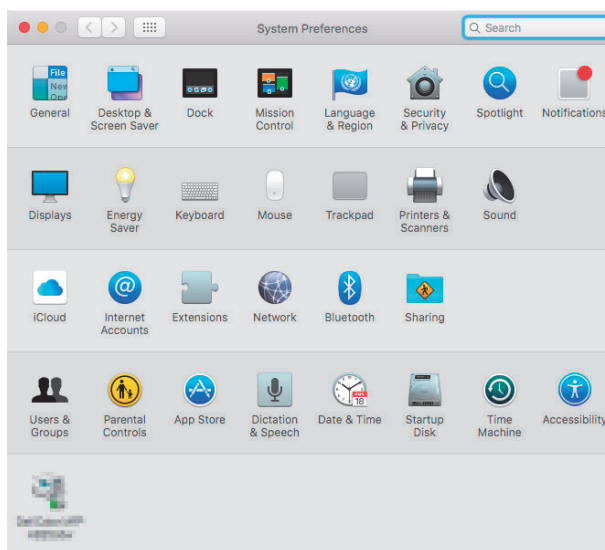
Computer Settings (For macOS/OS X only)

The machine must be registered to the computer before using AirPrint.

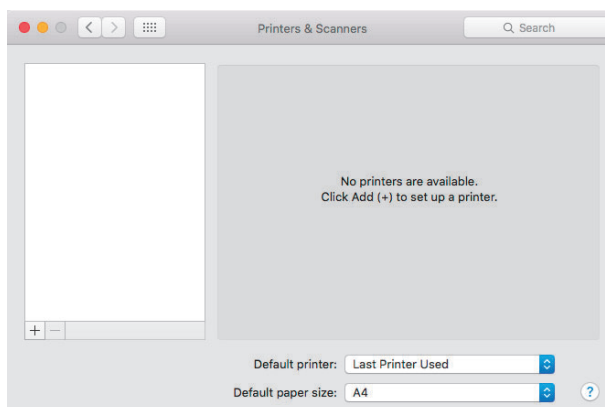
This section describes how to register the machine to the computer.

Note • When you use AirPrint via USB communication, this setting is unnecessary because the machine is automatically registered to the computer when the machine and the computer are connected with the USB cable.

- 1 From a network connected computer, select the [Apple] menu > [System Preferences].
- 2 Select [Printers & Scanners].



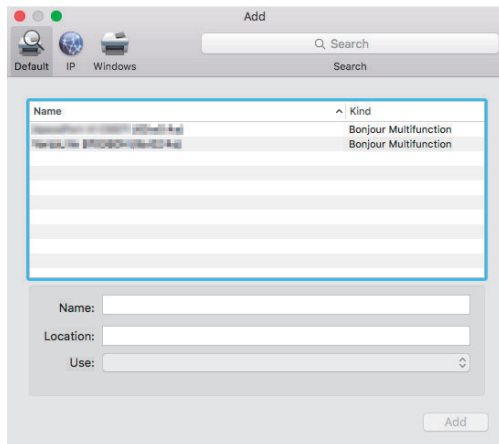
- 3 Click [+] (Add).



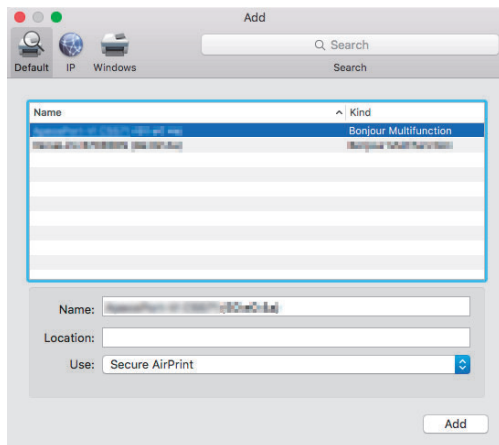
Note • If a drop-down menu is shown when you click [+] (Add), select [Add Printer or Scanner].

4 Select the machine from the [Name] list.

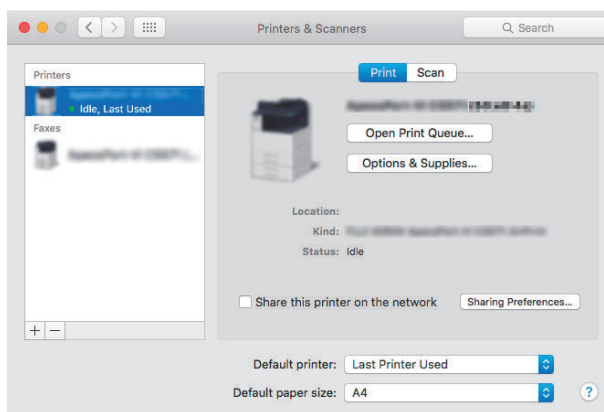
Note • Printers in the network are searched automatically and listed in the [Name] list. If the machine is not in the list, check the network settings of the machine and the computer.



5 Select [Secure AirPrint] or [AirPrint] for [Use], and click [Add].



The machine is added to [Printers] and [Faxes] in the [Printers & Scanners] screen.




Printing

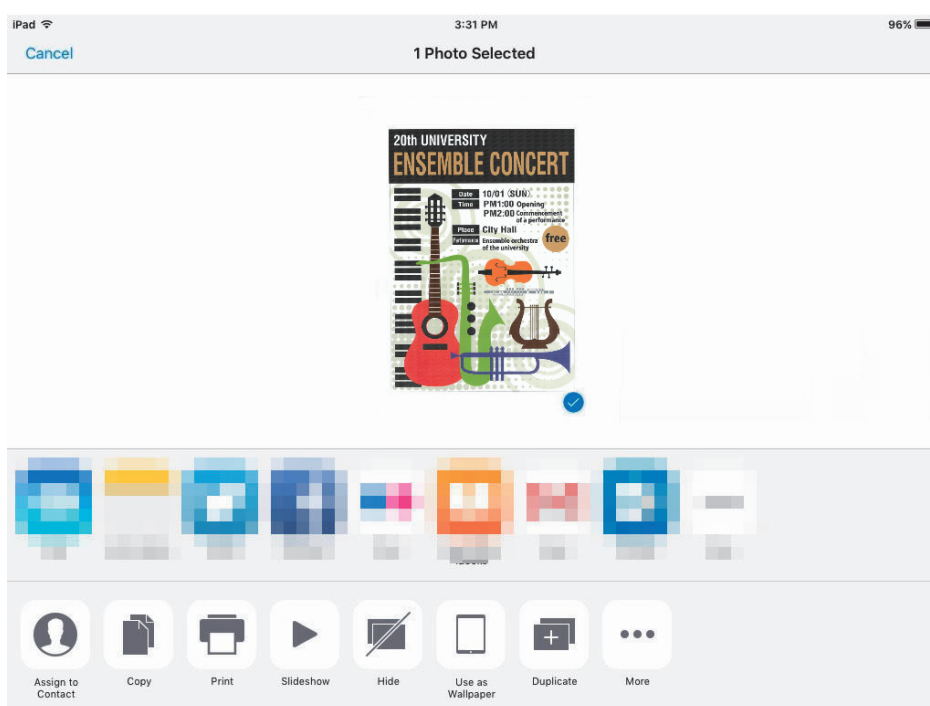
This section describes how to use AirPrint with the machine.

Printing from iOS

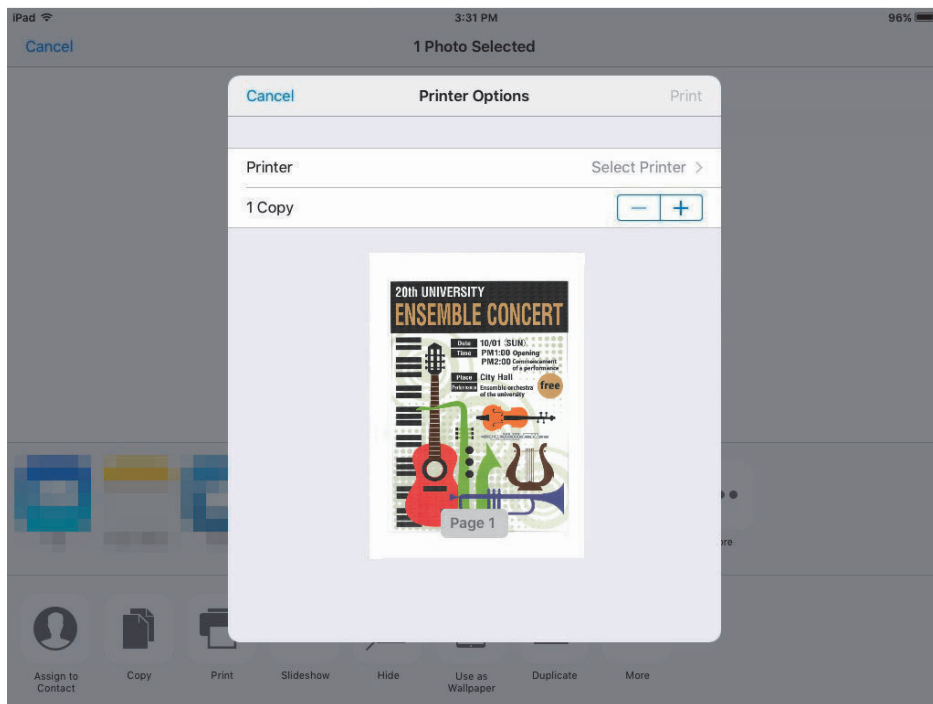
This section describes how to request a print instruction from iOS (iOS 9, Safari 8), taking iPad for example.

Note • The actual user interface may vary depending on your application.

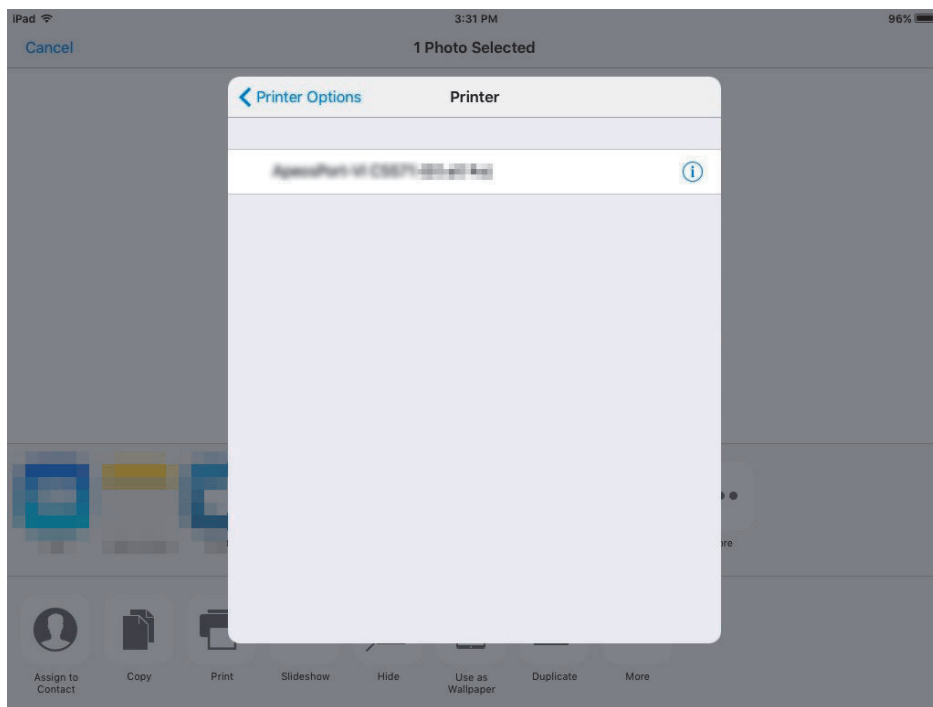
- 1 Open the document you want to print.
- 2 From the [] menu, select [Print].



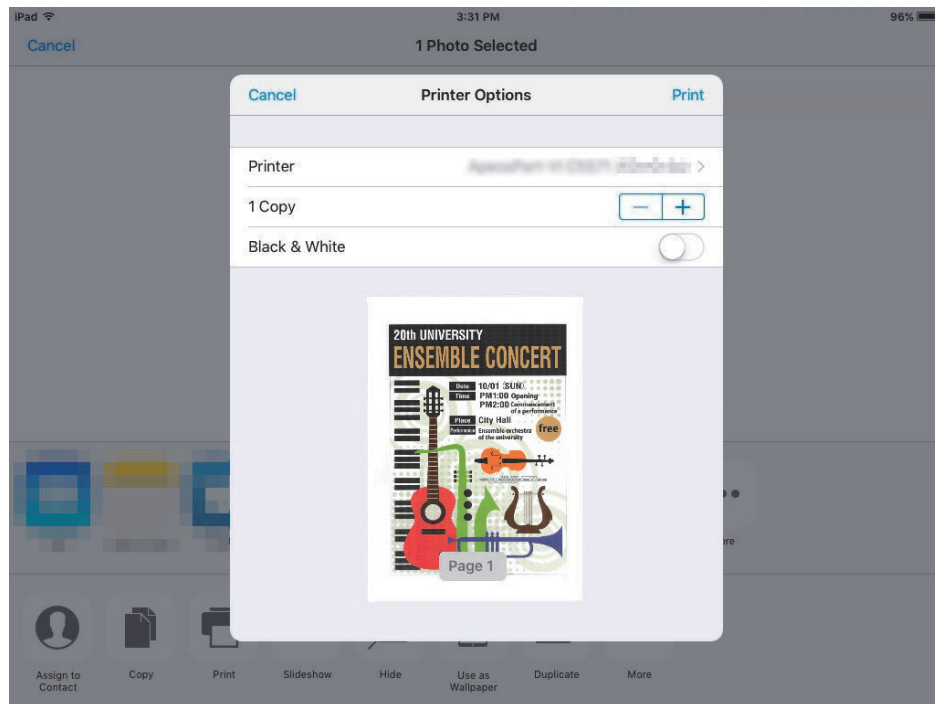
3 Tap [Select Printer].



4 Select the machine.



- 5 Confirm the print settings, and tap [Print].

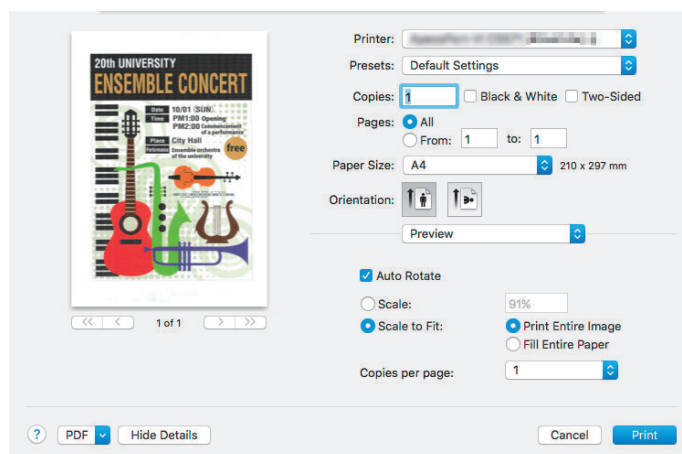


Note • Setting items vary by applications.

Printing from macOS/OS X

This section describes how to request a print instruction from macOS/OS X.

- 1 Open the document you want to print.
- 2 From the [File] menu, select [Print].
- 3 Select the machine from [Printer]. Confirm the print settings, and click [Print].

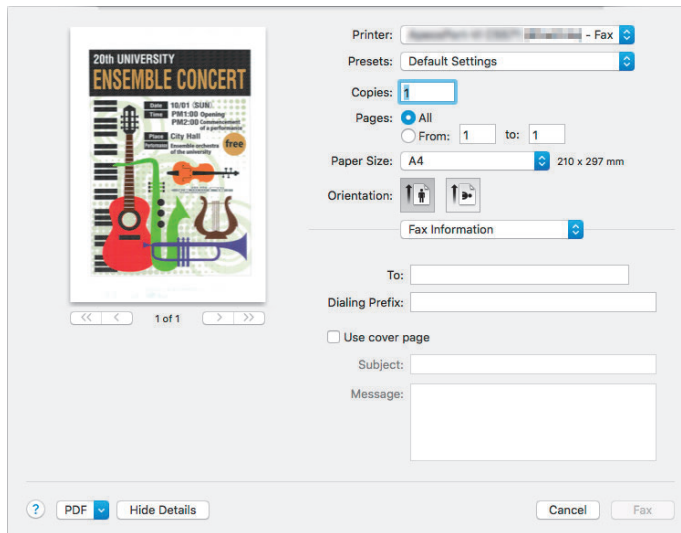


Note • You can only select the print settings available for the machine.

Faxing

This section describes how to fax documents using macOS/OS X.

- 1 Open the document you want to fax.
- 2 From the [File] menu, select [Print].
- 3 Select the [XXXX (machine name) - Fax] from [Printer].



- 4 Specify the destination and set other fax settings.
- 5 Click [Fax].

Scanning

This section describes how to scan documents using macOS/OS X.

Important • When you are away from the machine to operate a computer with the documents left on the machine, other users may operate the machine and there is a risk of document loss and information leakage. Use a computer which is as close to the machine as possible. Ensure that other user does not touch the document while you are away from the machine. When the scan process is complete, check that you have all pages of the documents.

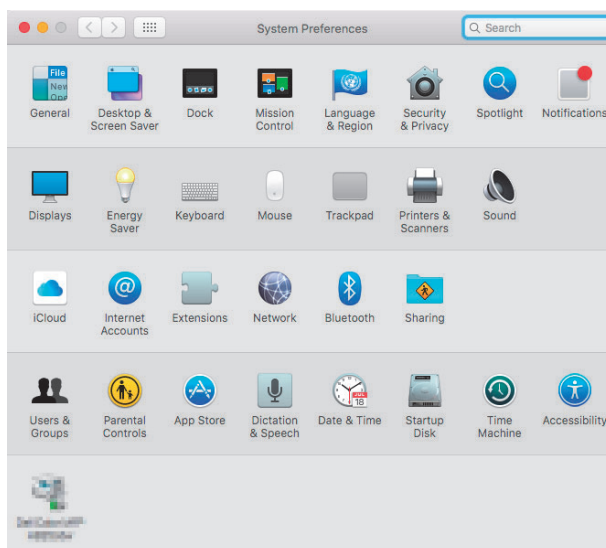
1 Load the document you want to scan on the document feeder or the document glass.

Note • Place the top of the document to the left. The document orientation cannot be changed.

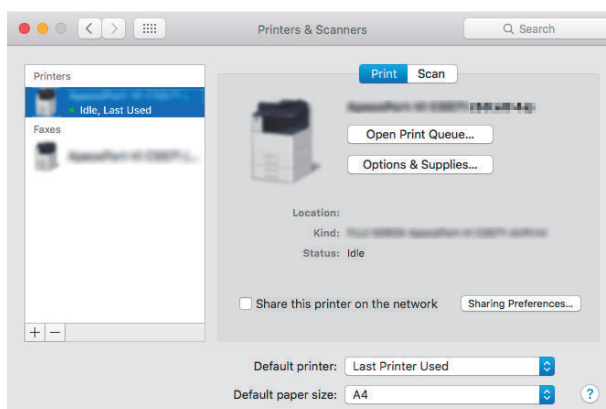
For more information on how to load documents, refer to "Scan" > "Scanning Procedure" in the User Guide.

2 Select the [Apple] menu > [System Preferences].

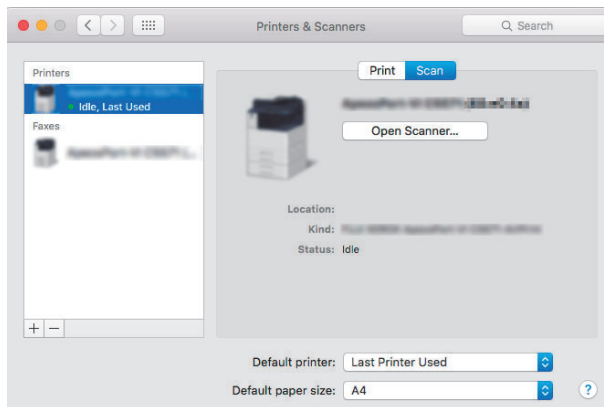
3 Select [Printers & Scanners].



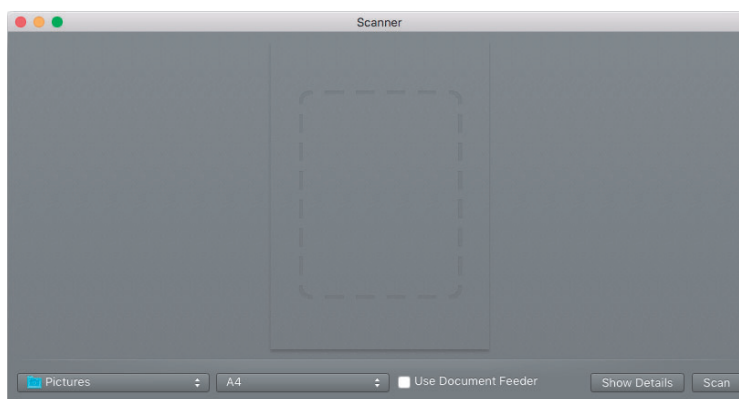
4 Select [Scan].



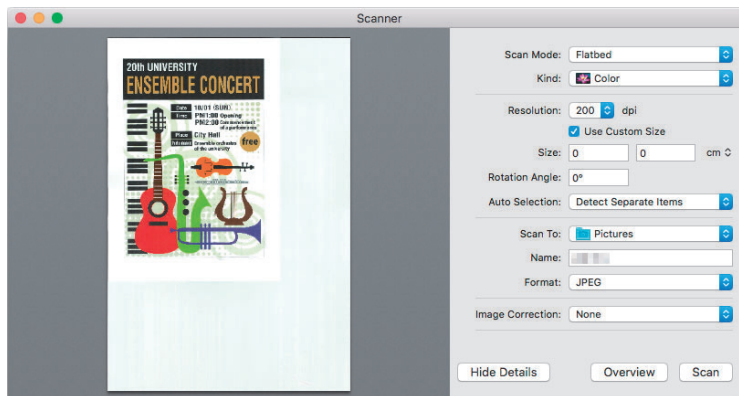
5 Select [Open Scanner].



The [Scanner] screen appears.



In the [Scanner] screen, you can specify the destination to save the document and the document size. Selecting [Show Details] allows you to make detailed settings.



6 Click [Scan].

Problem Solving

Problems on Selecting the Printer

Symptom	Cause and Remedy
The machine is not shown in the printer list.	[Cause] The computer could not connect to the network. [Remedy] Check the network settings for the machine and iOS/macOS/OS X.
	[Cause] Bonjour and IPP port are disabled. [Remedy] Check the port settings from [System Settings] > [Connectivity & Network Setup].
	[Cause] AirPrint is disabled. [Remedy] Connect to CentreWare Internet Services and check the checkbox for AirPrint under the [Properties] tab > [Connectivity] > [Protocols] > [AirPrint]. For information on how to enable AirPrint for the machine, refer to "AirPrint Setting" (P.5).
	[Cause] When requesting a print instruction from an macOS/OS X, the computer and the machine used different networks. [Remedy] Use the same network for the computer and the machine. When communicating via router, enable Wide-Area Bonjour for the computer and the machine. For information on how to enable Wide-Area Bonjour for the machine, refer to "When Using Different Networks (For macOS/OS X only)" (P.6). For information on how to make settings for macOS/OS X or DNS server, check with your network administrator.

Problems on Printing

Symptom	Cause and Remedy
Unable to print.	[Cause] Charge Print or Private Charge Print is set to the machine. [Remedy] Charge Print or Private Charge Print cannot be used with this feature. Change the machine settings.

Error Code

An error code is displayed when an error occurs while using this feature.

Refer to the error codes in the following table to resolve problems.

Note • If an error code is displayed, any print data remaining in the machine and information stored in the machine's memory are not secured.

For the error codes not in the following table, refer to the Administrator Guide.

Error Code	Cause and Remedy
017-734	[Cause] An internal error occurred while AirPrint/Mopria etc. processing. [Remedy] Try printing by other means from the standard print driver or software of Fuji Xerox. If the error still is not resolved, contact our Customer Support Center.

Notes and Restrictions

This section describes notes and restrictions to observe when using this feature.

■ Notes and Restrictions on Printing

- Charge Print or Private Charge Print cannot be used with this feature.
- With this feature, characters and images may be distorted in the printouts due to AirPrint specifications.
- A job printed with this feature is shown as "IPP" on Job History Report. Job information is shown as "PDF" or "URF" on the report.
- When a colored document is printed using AirPrint with an application of macOS/OS X, the document may be printed as colored after black and white printing is specified. In this case, use the standard print drivers of Fuji Xerox or Postscript print drivers for printing documents.
- Paper in Tray 5 (Bypass) may not be selected. When you want to use paper that can only be set in Tray 5 (Bypass), remove all the paper from trays other than Tray 5 (Bypass), and set the paper in Tray 5 (Bypass). The machine displays an out-of-paper alert, but there is no problem in printing.

■ Notes and Restrictions on Faxing

- Fax numbers must be entered in single-byte numeric characters. When a fax number includes a double-byte character, only single-byte numeric characters are used as an address. For example, entering "03 (double-byte characters) 5111" will be interpreted to "035111", and the fax will be sent to a wrong address. Make sure that the fax number is correct before sending a fax.
- If [Subject] includes more than 49 single-byte characters or more than 25 double-byte characters, the layout of the cover page will be broken.
- Too many characters for [To] or [Message] may not be completely printed on the cover sheet. Reduce the number of addresses, or the number of characters for the message.
- If [Subject] is entered in Thai, the characters may not be correctly printed on the cover page.

■ Notes and Restrictions on Scanning

- Scanning with AirPrint requires authentication on the machine when the authentication is enabled on the machine.
- The AirPrint scan features depend on the Mac OS standard scanner driver, and differ from the scan features of the machine. Mixed size originals cannot be scanned. The [Next Original] feature cannot be used.
- One machine cannot simultaneously perform AirPrint scan communication with two or more Mac computers. If the machine performing AirPrint scan communication with one Mac computer receives an AirPrint scan request from another computer, the request will be denied.
- When a proxy is set for a MAC computer, scanning with AirPrint may not be available. Add the printer address to the exception for the proxy, or turn off the proxy.
- When you specify the scan area with AirPrint, the specified area may not be applied.

Index

A

Adding the printer	7
AirPrint	3

C

CentreWare Internet Services	5
------------------------------------	---

E

Environment Settings	5
Error code	16

F

Faxing	12
--------------	----

M

macOS/OS X settings	7
---------------------------	---

O

Operating environment	3
-----------------------------	---

P

Printing	9
Problems on printing	15
Problems on selecting the printer	15
Protocol Settings	5

S

Scanning	13
Security Settings	5
Supported models	3
Supported OS	4

**B9136/B9125/B9110/B9100 Copier/Printer
User Guide (For AirPrint)**

Fuji Xerox Co., Ltd.

ME8193E2-1 (Edition 1)
February 2018
Copyright © 2018 by Fuji Xerox Co., Ltd.

Free Manuals Download Website

<http://myh66.com>

<http://usermanuals.us>

<http://www.somanuals.com>

<http://www.4manuals.cc>

<http://www.manual-lib.com>

<http://www.404manual.com>

<http://www.luxmanual.com>

<http://aubethermostatmanual.com>

Golf course search by state

<http://golfingnear.com>

Email search by domain

<http://emailbydomain.com>

Auto manuals search

<http://auto.somanuals.com>

TV manuals search

<http://tv.somanuals.com>