

XEROX[®]

Technology | Document Management | Consulting Services

Phaser[®] 8560



color printer

Xerox Phaser[®] 8560 Evaluator Guide



ABOUT THIS GUIDE

This guide will introduce you to the Xerox Phaser 8560 color printer, and help you in your printer evaluation process.

CONTENTS

Section 1 — Introducing the Xerox Phaser 8560 Solid Ink Color Printer

Product Overview	1
Xerox Phaser 8560 Configurations	2

Section 2 — Evaluating Workgroup Color Printers

Evaluate Printing Performance	4
Evaluate Print Quality	5
Evaluate Installation	6
Evaluate Ease of Use	7
Evaluate Management	10

Section 3 — Solid Ink Technology

Inside a Solid Ink Color Printer	12
--	----

Section 4 — Configurations, Specifications, Supplies, Support and Information Sources

Configuration Summary	13
Specifications	14
Supplies, Options and Extended Service Agreements	15
Support and Information Sources	16

SECTION 1

Introducing the Xerox Phaser 8560 Solid Ink Color Printer

PRODUCT OVERVIEW

The Xerox Phaser 8560 solid ink color printer is a high-performance color printer based on Xerox-exclusive solid ink technology. It is designed for busy workgroups in both small and large companies. The Phaser 8560 delivers fast print speeds, an affordable purchase price and unique solid-ink ease of use — all in a flexible printer that can expand from a desktop model to a four-tray, floor-standing powerhouse.

No-fuss productivity

A simple, cartridge-free design and a host of helpful features make the Phaser 8560 printer a snap to set up, operate and share.

- Replenishing ink is as easy as reloading a stapler — you can top off all the inks when one gets low, minimizing interventions
- Cartridge-free design means no empty cartridges to dispose of and no bulky boxes to store
- Streamlined, wizard-based driver installation gets your printer up and running in minutes
- PrintingScout™ technology alerts you when print jobs are interrupted and suggests appropriate remedies

Outstanding color print quality

The Phaser 8560 printer gives you precise details and rich, vibrant colors.

- Count on superior output on everything from cover-weight stock to recycled paper
- Confidently handle color projects in-house and say good-bye to lost time and the extra expense of outside services
- Nothing else on the market delivers more consistent, vivid color — the last page of a long job looks as good as the first page

A color printer that meets the challenge

The Phaser 8560 printer delivers fast, attention-grabbing results.

- Prints up to 30 pages per minute (ppm) in black-and-white and color, with a first-page-out time as fast as 5 seconds
- Powerful controller adeptly handles complex print jobs with a 600 MHz processor and up to 512 MB of memory
- Automatic two-sided output saves time, reduces paper costs and gives documents a professional look



Phaser 8560DT

XEROX PHASER 8560 CONFIGURATIONS

PHASER 8560N

The Phaser 8560N comes packed with features to support busy workgroups in small and large office environments.



Print Performance

- Print Speed — Up to 30 ppm color and black-and-white
- First-Page-Out Time — As fast as 5 seconds
- Resolution — Up to 2400 FinePoint™
- Page Description Languages — True Adobe® PostScript® 3™, PCL® 5c emulation

Controller

- Processor — 600 MHz PowerPC
- Memory — 256 MB standard (1 GB maximum)
- Hard Drive — Optional 40 GB

Connectivity

- Network — 10/100Base-TX Ethernet
- Direct Connect — USB 2.0
- Paper Capacity: 625 total sheets, standard (1,675 total sheets, optional)
- Tray 1/Multipurpose Tray — 100 sheets
- Tray 2 — 525 sheets
- Trays 3 and 4 (optional) — 525 sheets each

Paper Handling

- Supported Sizes —
 - Tray 1/Multipurpose Tray — Custom sizes from 3.5 x 5 in. to 8.5 x 14 in. (89 x 127 mm to 216 x 356 mm)
 - Trays 2–4 — Selectable sizes from 5.5 x 8.5 to 8.5 x 14 in. (140 x 216 mm to 216 x 356 mm)
- Supported Weights —
 - Tray 1/Multipurpose Tray — 16 to 40 lb. bond, 50 to 80 lb. cover (60 to 220 gsm)
 - Trays 2–4 — 16 to 32 lb. bond, 22 to 45 lb. cover (60 to 120 gsm)
- Media Types — Transparencies, envelopes, labels, glossy paper, custom-size paper

Print Features

- Standard — Custom-size pages, Xerox installer, intelligent ready, booklet printing, Smart Trays, remote printing, job accounting, printer neighborhood, run black
- Optional (requires hard disk) — Personal/personal saved/secure/proof/saved print, print with, extended font/form storage, collation, hard drive overwrite

Reliability

- Duty Cycle — 85,000 prints per month
- Warranty — One-year on-site warranty, Xerox Total Satisfaction Guarantee

*Print volume uniformly distributed over 30 days.

PHASER 8560DN

Includes all capabilities of the Phaser 8560N, with the following upgrade:

Print Performance

- Automatic two-sided output



PHASER 8560DT

Includes all capabilities of the Phaser 8560DN, with the following upgrades:

Controller

- Memory — 512 MB standard

Paper Capacity: 1,150 total sheets, standard (1,675 total sheets, optional)

- Tray 1/Multipurpose Tray — 100 sheets
- Tray 2 — 525 sheets
- Tray 3 — 525 sheets



PHASER 8560DX

Includes all capabilities of the Phaser 8560DT, with the following upgrades:

Controller:

- Hard Drive — Standard 40 GB

Paper Capacity: 1,675 total sheets, standard

- Tray 1/Multipurpose Tray — 100 sheets
- Tray 2 — 525 sheets
- Tray 3 — 525 sheets
- Tray 4 — 525 sheets



SECTION 2

Evaluating Workgroup Color Printers

While the benefits of color are easy to see, evaluating color printers for purchase and deployment into your business can be more challenging. Based on years of experience and research into the real-world needs of color printer users, Xerox has identified some key issues for you to consider as you conduct your color printer evaluations.

Workgroup printers are typically shared by as many as 25 people on a day-to-day basis; even more people are likely to use it on a sporadic basis. Further, larger workgroups often comprise employees who work off of different platforms and operating systems — such as Microsoft Windows®, Apple Mac® OS or Linux® — so driver support for multiple platforms is another important factor. Further, many small- and medium-size businesses interested in adopting color printers lack full-time IT staff — so the machines they ultimately deploy must be strong performers with broad interoperability that are simultaneously easy to install, manage and use.

Currently, the single most common use of color printing technology is print media creation for your company's customers and partners. Such media includes marketing and sales collaterals, reports, proposals, user guides and the like. As workgroup color printer utilization grows more pervasive, traditional black-and-white documents will be transposed for color prints, which will improve end user retention and understanding of their content.

Regardless of application or environment, the following areas remain very important factors when customers contemplate purchasing a color printer.

Evaluate Printing Performance

More than just pages per minute, the overall printing performance of a color printer indicates whether it can support the workload of your busy employees.

Evaluate Print Quality

Think about the intended audience for the documents this printer will ultimately produce. Is the print quality good enough to enhance your internal documents and dazzle your customers?

Evaluate Installation

The color printer you choose must be quick and easy to install, whether you have IT staff on hand to assist or not.

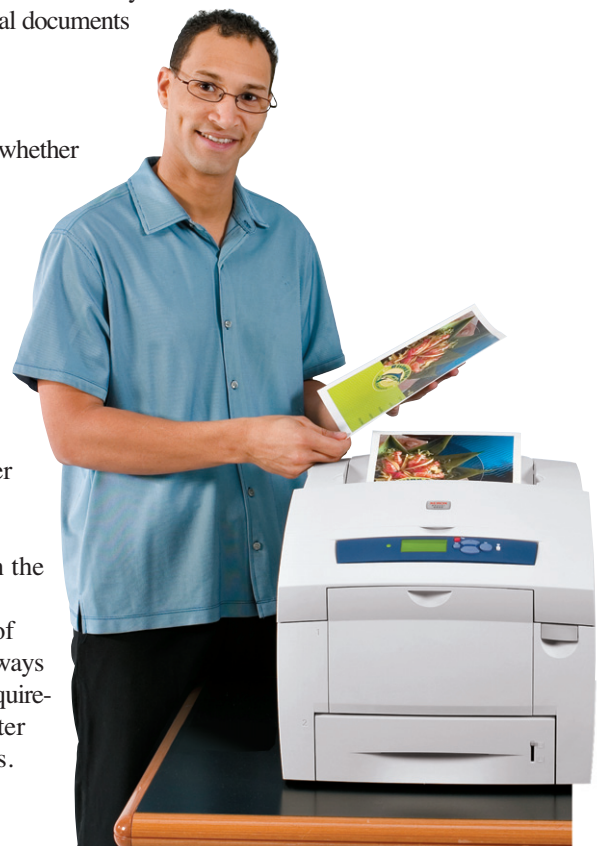
Evaluate Ease of Use

Your employees need a printer that's simple and intuitive to use on a daily basis: Supplies must be easy to replace and issues must be easy to resolve.

Evaluate Management

Examine the tools available for IT administrators in larger organizations to manage printer settings, user access, printer status and more.

Your challenge is to evaluate the color printers available on the market today and choose the one that most completely meets your company's needs in each of these areas. This section of the Evaluator Guide will examine each of these areas, suggest ways you can evaluate a prospective product candidate against that requirement, and explain how the Phaser 8560 solid ink color printer exceeds the expectations of color printer users on all counts.



EVALUATE PRINTING PERFORMANCE

Workgroup-class color printers need to deliver a **level of performance** that can **support a heavy daily workload**. This includes **raw print speed**, as well as **print job processing speed**. Is the **print controller** powerful enough to support your applications? Is the printer **designed to be shared** by employees in busy workgroups? Does the printer provide the right **media support** for your applications?

THE XEROX
ADVANTAGE

HOW THE XEROX PHASER 8560 EXCEEDS THE PRINTING PERFORMANCE REQUIREMENT

OVERALL PRINT PERFORMANCE

The Phaser 8560 is a high-performance color printer based on Xerox-exclusive solid ink technology. It is designed to handle the daily demands of busy workgroups within both small and large companies. Most importantly, it is designed with user flexibility foremost in mind. Users don't want to be limited to a single print speed or print mode, since some of their print jobs may demand maximum speed while others require the best image quality possible. The Phaser 8560 color printer incorporates this need for flexibility by offering four print modes: fast color, standard, enhanced (default mode), and high-resolution/photo mode.

The Phaser 8560 printer delivers not only options but also performance. With print speeds as fast as 30 ppm, long print jobs can be tackled quickly. The other key performance metric for color printers is first-page-out time, and the Phaser 8560 delivers here as well, with a speedy first-page-out time of as little as 5 seconds. For busy workgroups that regularly print a mix of long and short print jobs, the Phaser 8560 packs the performance needed to process jobs quickly and keep your office productive.

POWERFUL CONTROLLER

The Phaser 8560 controller is based on a 600 MHz PowerPC RISC processor with 256 MB of memory, standard (512 MB of memory, maximum). This enables the Phaser 8560 printer to quickly process complex print jobs and deliver its extremely fast first-page-out time.

BUILT TO BE SHARED

With standard support for 10/100Base-TX Ethernet networking, an 85,000-page-per-month duty cycle, and a customizable paper capacity from 625 to 1,675 pages, the Phaser 8560 is truly built to be shared. Network administration tools are provided to help IT departments track printer use, facilitate charge-back billings, and plan for future printer deployment.



Phaser 8560DX

EVALUATE PRINTING PERFORMANCE (CONTINUED)

MEDIA SUPPORT

The Phaser 8560 printer can easily handle a wide range of media to support the variety of document types your busy employees produce on a regular basis. Supported media types include plain printer paper, transparencies, labels, envelopes, card stock and business cards. Media size and weight support delivered by the Phaser 8560 include:

Supported Sizes

- Tray 1/Multipurpose Tray — Custom sizes from 3.5 x 5 in. to 8.5 x 14 in. (89 x 127 mm to 216 x 356 mm)
- Trays 2–4 — Selectable sizes from 5.5 x 8.5 in. to 8.5 x 14 in. (140 x 216 mm to 216 x 356 mm)

Supported Weights

- Tray 1/Multipurpose Tray — 16 to 40 lb. bond, 50 to 80 lb. cover (60 to 220 gsm)
- Trays 2–4 — 16 to 32 lb. bond, 22 to 45 lb. cover (60 to 120 gsm)



EVALUATE PRINT QUALITY

Performance is important when evaluating color printers, but performance should not come at the expense of **print quality**. Evaluate printer output quality for **photos**, **graphics** and **text** to see if a prospective printer is capable of handling the **office documents** you regularly generate. Is the print quality **consistent** from one job to the next? Can you **control the color output** of the printer to realize the results you need?

THE XEROX
ADVANTAGE

HOW THE XEROX PHASER 8560 EXCEEDS THE PRINT QUALITY REQUIREMENT

SOLID INK COLOR TECHNOLOGY

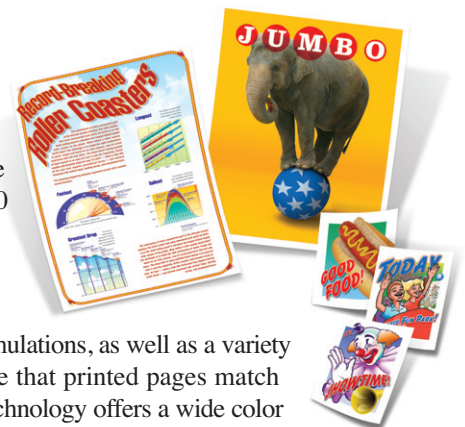
The solid ink printing process is optimized for quality color printing. Solid ink excels at printing smooth color blends and gradients, and with 2400 FinePoint™ resolution, you can achieve the finest results for photographs and other high-resolution graphics, as well as solid-fill areas in charts and presentations. The Phaser 8560 printer creates office documents with crisp text and fine-line detail every time.

CONSISTENCY

Because there are no imaging components that wear with time, the color output of the Phaser 8560 printer is consistent page after page and print job after print job. The colors of your corporate logo will look the same on a report printed in the morning as they will on a presentation generated in the evening. The same holds true on longer-run print jobs: Copy number 100 will always look just as good as copy number 1.

COLOR CONTROL

The Phaser 8560 printer features PANTONE® Color approved solid-color simulations, as well as a variety of color correction settings that help you manage color output and ensure that printed pages match output from other printing devices or computer displays. Xerox Solid Ink Technology offers a wide color range that strengthens color control; solid ink output is also more resilient than other printing technologies to changes in temperature, humidity, and media type.

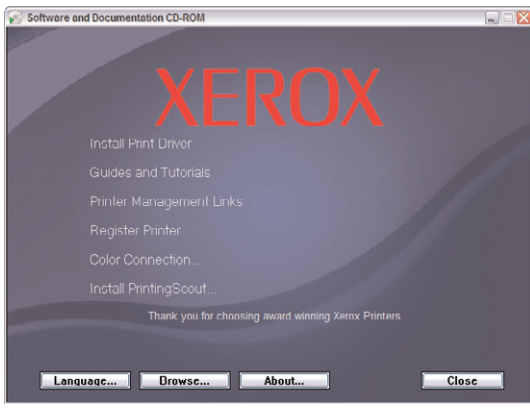


EVALUATE INSTALLATION

Before they can realize the benefits of adopting a high-performance color printer, customers must first consider **setup and installation steps**. Is the **printer easy to set up** and **connect to your network**? Can your employees **install print drivers**, and do flexible installation methods exist for both large and small organizations, or for organizations with unique installation requirements.

THE XEROX
ADVANTAGE

HOW THE XEROX PHASER 8560 EXCEEDS THE INSTALLATION REQUIREMENT



PRINTER SETUP

The Phaser 8560 printer ships with easy-to-follow, graphic-based instructions on how to remove it from its packaging, assemble it and prepare it for printing. Printer setup is straightforward — the Phaser 8560 printer even ships with two ink sticks preinstalled for each color. There are no consumables to install during setup. Once the printer is plugged in and attached to your network, it will automatically be assigned an IP address — and you'll be ready to install print drivers and start printing.

PRINT DRIVER INSTALLATION

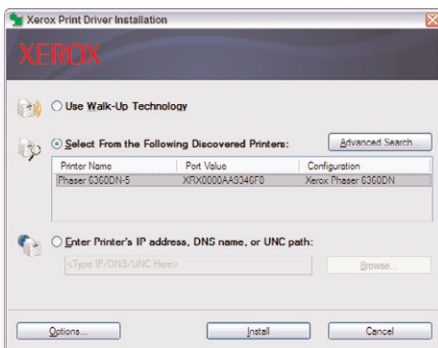
The Phaser 8560 print driver installation process is designed to provide easy and consistent installation from all software sources, regardless of platform.

The installation process can be initiated from multiple locations:

- Phaser 8560 Installation CD
- CentreWare® IS Embedded Web Server
- Xerox.com download

The wizard-based driver installation process offers you three methods for selecting the printer you want to install:

- Use Xerox Walk-Up® Technology (default) — It doesn't get easier than this. The installation application will direct you to the Phaser 8560 you want to install. Simply select "Walk-Up Features" and "Select for Installation," and the rest of the process is completely automated. You don't need to know the printer name or its IP address.
- Select from the Following Discovered Printers — If you know the name of the printer you want to install, select it from the list of discovered printers to install.
- Enter Printer's IP address — If you know the IP address of the printer you want to install, enter it here to install and that specific printer.



The Phaser 8560 print driver installation application automatically discovers what printer configuration you are installing — as well as the presence of features like two-sided output and additional paper trays — and makes it available in your print driver.

For small organizations, this automated installation process makes it easy for your employees to install their print drivers with or without IT assistance. For larger organizations, the IT department can simply send an email to end users with a link to CentreWare IS or the Xerox.com website, enabling them to launch the print driver installer and follow the same simple installation process.

EVALUATE EASE OF USE

When evaluating color printers, it is important to think about **ease of use** from a variety of angles. Are the printer and print driver **simple for your employees to learn**, and do they **help users solve issues and avoid downtime**? Does the printer include features that **eliminate interruptions**? Are **consumables easy to locate and replace**? Is **automated support** offered to minimize calls to your help desk or to customer support?

THE XEROX
ADVANTAGE

HOW THE PHASER 8560 EXCEEDS THE EASE-OF-USE REQUIREMENT

FRONT PANEL

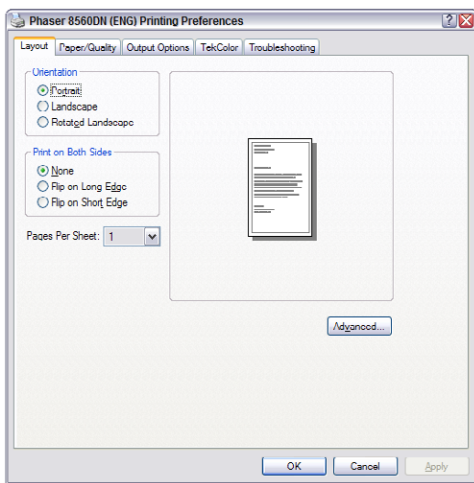
The Phaser 8560 offers a large, high-contrast front panel display that is simple, well-organized and backlit for comfortable viewing. The front panel offers menu-based navigation features and information, with options such as walk-up features, paper tray setup, printer setup, troubleshooting and shutdown.

The front panel is also a valuable resource for help topics. Pressing the “?” button brings up a contextual help message that explains whatever menu function or message is currently displayed. Further, if the Phaser 8560 needs attention, the front panel will display graphic and text instructions on what you need to do to get it back up and printing.

PRINT DRIVERS

The Phaser 8560 print drivers are intuitively organized to offer quick access to the most commonly used features, with easy tab-based access to the complete feature set. Tabs are organized by:

- Layout — The default driver tab, settings for page orientation, two-sided printing and N-up printing
- Paper/Quality — Paper selection settings and status, as well as options for print quality and cover pages
- Output Options — Settings for walk-up features like secure and proof printing and insertion of separation pages



- Xerox Color Correction — Offers a set of advanced features for controlling the color output of your Phaser 8560, with settings for matching the color of other printing devices and computer displays
- Troubleshooting — Settings for the PrintingScout utility and links to online help resources

Print drivers that support True Adobe® PostScript® 3™ and HP® PCL® 5c emulation are bundled with the Phaser 8560. They deliver a rich feature set, accurate colors, and support for your specific applications and workflows.

INTELLIGENT READY

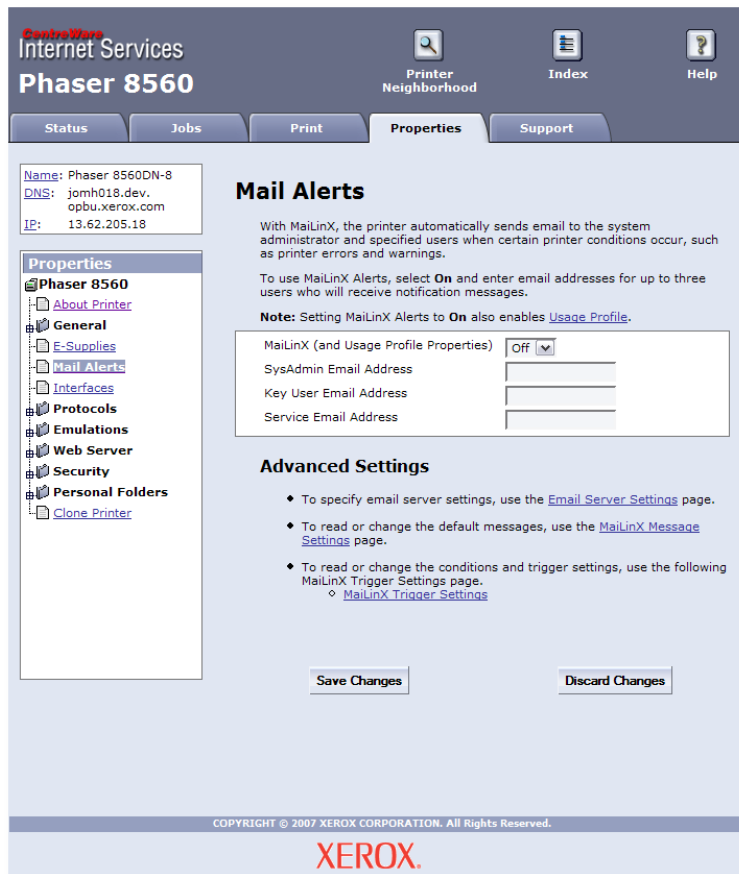
Intelligent Ready is a standard software feature of the Phaser 8560. With Intelligent Ready, there is no need to turn off the printer. The software tracks when and how the printer is used over a rolling three-week period, which helps the printer learn to automatically place itself into standby and power-saving modes during periods of nonuse. The printer will automatically return to its ready mode just prior to an expected use period, avoiding any warm-up time and minimizing power usage in periods of nonuse.

PRINTINGSCOUT

When you send a document to the Phaser 8560, the Xerox-exclusive PrintingScout utility monitors and reports any printer condition that might prevent a print job from completing successfully. A pop-up help window provides appropriate how-to instructions, illustrations and links to help the print job owner quickly identify and resolve his or her printing problem. This way, when end users must visit the printer, they're completely prepared to fix any problems.

AUTOMATIC NOTIFICATION

What would be better than knowing if your printer needs help before you print? How about avoiding the problem altogether. MaiLinX email alerts automatically notify a specified recipient when a printer needs supplies or maintenance. This feature will help you avoid getting caught without replacement consumables when you need them — and also help reduce printer downtime.



PAPER AND CONSUMABLE CAPACITIES

The Phaser 8560 gives you broad flexibility when configuring the printer for your office environment. The Phaser 8560 comes standard with a 525-sheet paper tray (allowing you to conveniently load an entire ream of paper without running the tray completely empty) and a 100-sheet multipurpose tray for 625 sheets of total capacity. You can also add up to two additional 525-sheet paper trays for a total capacity of up to 1,675 sheets. The Phaser 8560 can be configured to fit both small and large workgroups that regularly print on different media types and sizes.

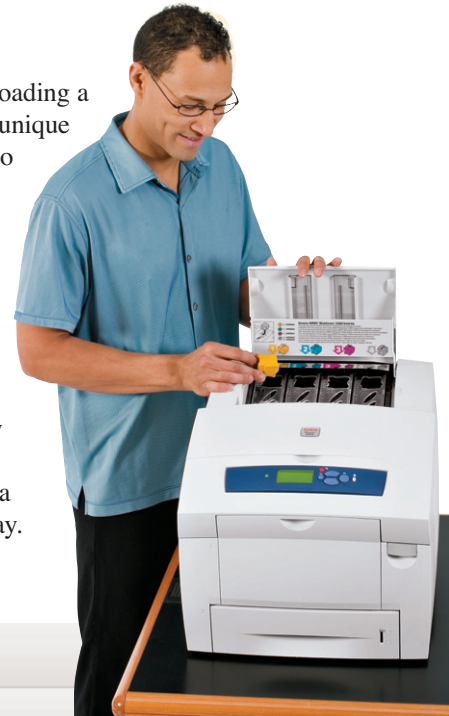
Xerox offers cyan, magenta and yellow solid ink sticks in packs of three, which deliver an average of 3,400¹ standard pages. Black solid ink sticks are sold in packs of 3 sticks, which deliver an average of 3,400² standard pages, or packs of 6 sticks, which deliver an average of 6,800² standard pages — giving customers the option to purchase more black ink to account for the higher use of black ink in standard office documents.

CONSUMABLE REPLACEMENT

Replacing solid ink sticks in the Phaser 8560 is as simple as reloading a stapler. Accessed via the top of the printer, each ink stick has a unique shape to not only denote its color but also ensure it is loaded into the correct slot. There is no toner to spill, and no empty toner cartridges to dispose of — solid ink technology is a clean, efficient solution for your office’s color printing requirements.

AUTOMATED SUPPORT

The Phaser 8560 includes the Xerox-exclusive PhaserSMART[®] utility, an automated, internet-based support and service delivery tool. PhaserSMART leverages information from your printer to diagnose and deliver self-support solutions. Available 24 hours a day, seven days a week, PhaserSMART is only a mouse-click away.



XEROX.

Phaser **SMART**

Welcome to the PhaserSMART Usage Profile Submission Logging page

104266

PhaserSMART Usage Profile Log Database ID: 104266

Error Type:

- select an problem --
- Jam
- Message Displayed
- Observed
- Print Quality
- Software
- Usability
- Consumables
- Test -- No problem
- Unknown

Printer Name:		4-8
Printer IP:		
Submitting Br		
Query String:		

¹Average Continuous Composite CMY Yield in accordance with ISO/IEC 19798. Yield will vary based on image, area coverage and print mode.
²Average Black Continuous Yield in accordance with ISO/IEC 19798. Yield will vary based on image, area coverage and print mode.

EVALUATE MANAGEMENT

The **ongoing management** of color printers is another fundamental consideration. Are tools provided for **managing printer settings, checking printer status, and assisting with troubleshooting**? Can you **run detailed reports** on printer usage and costs? Does the printer **interoperate** with network management tools you might already have in place?

THE XEROX
ADVANTAGE

HOW THE PHASER 8560 EXCEEDS THE MANAGEMENT REQUIREMENT

CENTREWARE IS EMBEDDED WEB SERVER

The CentreWare IS Embedded Web Server acts as a website inside the Phaser 8560 printer. CentreWare IS allows network administrators and general users to check printer status, troubleshoot interruptions, check supply levels, install printer drivers, manage printer settings and more — all via web browser from any computer connected to your network. You only need the printer's IP address to access CentreWare IS.

CentreWare
Internet Services
Phaser 8560

Printer Neighborhood Index Help

Features

- ✓ Premium color printing - up to 2400 dpi
- ✓ Fast printing up to 30 ppm and unrivaled 6 seconds to first page
- ✓ Outstanding performance with 600 MHz processor
- ✓ Easy to load solid ink consumables
- ✓ True Adobe PostScript 3
- ✓ Easy installation and use with Phaser Software

Optional Features
(✓ = installed on this system)

- ✓ Automatic two sided printing
- ✓ 525-Sheet feeder
- ✓ Advanced Features
- ✓ Network Interface

Printer Drivers
Install Printer Drivers

Status

Jobs

Print

Properties

Support

Name: Phaser 8560DN-8
DNS: jomh018.dev.opbu.xerox.com
IP: 13.62.205.18
Contact:
Location:
Status: Ready

[Refresh Status](#)

CENTREWARE WEB NETWORK MANAGEMENT UTILITY

The CentreWare Web utility provides enterprise management solutions for all devices connected to your network — not just Xerox devices. Install, troubleshoot, configure and produce asset reports for all your devices. Simply install CentreWare Web on a server or computer running Microsoft Windows 2000 Professional/Server/Advanced Server, XP or 2003 with Internet Information Services 5.0 or higher, and you gain access from anywhere on your network through any standard web browser.

CentreWare
Internet Services
Phaser 8560

Printer Neighborhood Index Help

Status Jobs Print Properties Support

General Supplies

General Status

Name: Phaser 8560DN-8
DNS: jomh018.dev.opbu.xerox.com
IP: 13.62.205.18
Contact:
Location:
Status: Ready

[Refresh Status](#)

Paper Tray(s)

Tray	Size	Paper Type	Capacity	
Tray 1	Not Set	Not Set	Empty	
Tray 2	Letter	Plain Paper	Full	

Output Tray

Tray	Level	
Output Tray	Not Full	

Page Count

Page Count	
754	

Polling Interval

CentreWare IS Status Refresh Delay seconds

[Change Refresh Behavior](#)

COPYRIGHT © 2007 XEROX CORPORATION. All Rights Reserved.

XEROX.

EVALUATE MANAGEMENT (CONTINUED)

The key advantages of CentreWare Web are listed below:

- When entering the tool, system administrators automatically see all printers and MFPs currently in an error state, without searching for them
- You save valuable time with the ability to conduct installation, configuration and troubleshooting on up to 25 printers simultaneously
- You only need one tool: CentreWare Web enables you to install, configure, troubleshoot and generate reports for all products, regardless of vendor
- Printer configurations can be cloned to other printers, instead of taking the time to configure printers one at a time
- Produce asset reports, error history reports, status reports and accounting reports for all your devices, and have them emailed to key recipients
- Intuitive wizards guide you through specialized, infrequent tasks such as upgrading printer firmware, cloning device configurations, installing multiple printers and more

ADVANCED NETWORK MANAGEMENT TOOLS

The Advanced Network Management Tools CD shipped with the Phaser 8560 includes:

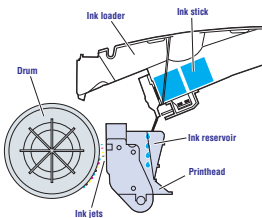
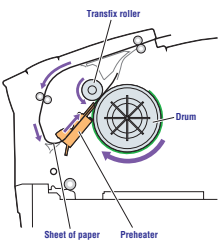
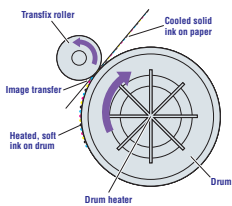
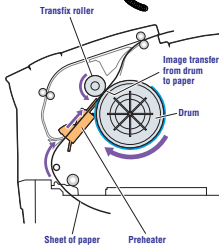
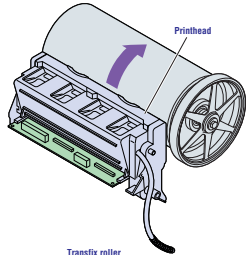
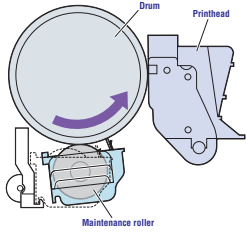
- CentreWare Microsoft Management Console (MMC) — allows seamless installation, configuration and status monitoring of Xerox network printers in the Windows 2000 environment
- CentreWare for UNIX — provides enhanced printing and management capabilities for UNIX or Linux environments
- NDPS® Gateway — enables the use of Novell Distributed Print Services (NDPS) and Novell Enterprise Print Services (NEPS) with Xerox printers
- Multiple Printer Installation Tool — allows system administrators to copy settings from one printer to others on the network
- Usage Analysis Tool — provides detailed cost tracking for Phaser printers, tracking every print job and the cost for each page based on toner coverage and your actual prices for supplies
- Font Download Tool — manages your printer fonts from an easy-to-use Windows application



SECTION 3

Solid Ink Technology

INSIDE A SOLID INK COLOR PRINTER



ADVANTAGES

Preparing to print. As the printing process begins, the long-life maintenance roller quickly applies a microscopic layer of silicone oil to the heated drum for reliable ink release.

- A simple, robust, reliable printing mechanism
- Maintenance roller lasts up to 30,000 prints (8560 Extended Maintenance Kit only)
- No complex consumables

Single pass imaging. Next, the full-width printhead applies all colors at the same time on the rotating drum.

- High-speed image transfer
- Simultaneous application of all colors eliminates misregistration of separate cyan, magenta, yellow, and black image layers

Image transfer. A sheet of paper is rapidly fed between the drum and a transfix roller, transferring the ink to the paper.

- High-speed image transfer
- A short, simple paper path for speed and high reliability
- Transfer printing process yields great print quality on a wide variety of paper types
- No fuser required

Ink bonding. As the ink on the drum transfers to the paper, it penetrates the paper's fibers, but without the spreading of liquid inkjets or the toner scattering of lasers. The ink cools and solidifies immediately, forming a strong, permanent bond to the paper.

- Colorfast printing with no smearing or drying time
- More consistent color quality on a wider range of media than liquid inkjet or color laser

Two-sided printing. For automatic two-sided printing, the paper is not fully ejected into the exit tray but is fed back into the printer through the duplex paper path. The second image on the drum is transferred to the other side of the paper.

- A simple, short, built-in duplex paper path means faster two-sided printing and fewer paper jams
- No additional paper tray required

Reloading. The ink loader draws ink from solid ink sticks instead of a self-contained toner cartridge. Ink can be replaced or added at any time without taking the printer offline.

- Easy, on-the-fly ink stick reloading for continuous operation
- Ink loader can be "topped off" before long, high-coverage print jobs to avoid interruptions
- More environmentally friendly; less wasteful packaging, less waste ink by-products

SECTION 4

Configurations, Specifications, Supplies, Support and Information Sources

PHASER 8560 CONFIGURATION SUMMARY



	Phaser 8560N	Phaser 8560DN	Phaser 8560DT	Phaser 8560DX
Speed	Up to 30 ppm color / 30 ppm black-and-white			
Duty Cycle	85,000 pages / month			
Paper Handling	Tray 1: 100 sheets; Custom sizes: 3 x 5 in. to 8.5 x 14 in. / 76 x 127 mm to 279 x 356 mm Tray 2: 525 sheets; Selectable sizes: 5.5 x 8.5 in. to 8.5 x 14 in. / 176 x 250 mm to 210 x 297 mm			
Paper input	Optional		Standard	
Tray 3: 525 sheets	Optional		Standard	
Tray 4: 525 sheets	Optional		Standard	
Paper output	250 sheets face-down output tray			
Two-sided output	Optional	Standard		
Print				
First-page-out time	As fast as 5 seconds color			
Resolution (max)	Up to 2400 FinePoint™			
Memory (std / max)	256 MB / 1 GB		512 MB / 1 GB	
Processor / PDL	600 MHz processor / True Adobe® PostScript® 3™, PCL® 5c emulation			
Hard Drive	Optional		Standard 20 GB	
Connectivity	10/100Base-TX Ethernet, USB 2.0, IPv6*			
Print features	Custom-size pages, Xerox Installer, Intelligent Ready, Embedded Web Server, PrintingScout, PhaserSMART, Usage Analysis Tool, Booklet printing, Smart Trays, Remote Printing, RAM Collation, Email alerts, Job Accounting, Printer Neighborhood, Job Pipelining, Run Black			
Productivity kit	Optional		Hard drive: Personal/Personal Saved/Secure/Proof/Saved Print, Print With, Extended Font/form storage, Disk Collation, Hard Drive Overwrite	
Warranty	One-year on-site, Xerox Total Satisfaction Guarantee			

*Requires system firmware version 1.3.7.P

PHASER 8560 SPECIFICATIONS

Device Management	Xerox CentreWare® Printer Management for Microsoft, Novell and UNIX; Xerox CentreWare® IS Embedded Web Server; Xerox CentreWare Web; Xerox NDPS Gateway; Usage Analysis Tool; PrintingScout™; MailinX email alerts; PhaserSMART®
Printer Driver Support	Microsoft: Windows® XP/2003 Server, Vista; Apple Mac OS® version 10.3 and higher; Novel NetWare® 5.x/6.5 (NDPS only) Unix/Linux (see web); Xerox Walk-Up® Printer Drivers
Media Handling	Tray 1: Weights: 16 to 40 lb. bond, 50 to 80 lb. cover, 60 to 220 gsm, Custom sizes from 3 x 5 in. to 8.5 x 14 in. (89 x 127 mm to 216 x 356 mm) Trays 2-4: 16 to 32 lb. bond, 22 to 45 lb. cover, 60 to 120 gsm, Selectable sizes from 5.5 x 8.5 in. to 8.5 x 14 in. (140 x 216 mm to 216 x 356 mm)
Operating Environment	Temperature: Nonoperating: -22° to 140° Fahrenheit (-30° to 60° Celsius), Operating: 50° to 90° Fahrenheit (10° to 32° Celsius) Relative Humidity: Nonoperating: 10% to 95%, Operating: 10% to 80% Sound Power Levels: Operating: 54 dBA, Standby: 33 dBA
Electrical	Power: 110–240 V, 50–60 Hz Power Consumption: Average: 230 W, Maximum: 1500 W
Dimensions (Width x Depth x Height)	Phaser 8560N and Phaser 8560DN: 16 x 21 x 14.5 in. (406 x 533.4 x 368 mm); Weight: 60 lbs. (28 kg) Phaser 8560/DT: 16 x 21 x 19.7 in. (406 x 533 x 500 mm); Weight: 76 lbs. (34.5 kg) Phaser 8560/DX: 16 x 21 x 24.9 in. (406 x 533 x 632 mm); Weight: 92 lbs. (41.7 kg)
Certification	Certified to UL 60950-1/CSA 60950-1-03 1st Edition, FCC Part 15 Class A, Low Voltage Directive 73/23/EEC, EN 60950-1 EMC Directive 89/336/EE3, GOST EN55022 Class A, EN 55024, ROHS Directive 2002/95/EC

Print Quality Modes	Print Quality Mode	Description	Print Speed
	Fast Color	Fastest full-color output — great for general office correspondence	Up to 30 ppm
	Standard	Light presentation mode for documents like Microsoft PowerPoint® handouts	Up to 24 ppm
	Enhanced	Optimal balance of print quality and speed — professional presentation quality	Up to 16 ppm
	High Resolution/Photo	2400 FinePoint™ — near-photographic detail	Up to 10 ppm

Xerox Color Corrections	Selection	Use For
	Automatic	Applies the best color correction to each graphic element (text, artwork and photographs)
	Office Color	sRGB Display approximates the colors on a computer display sRGB Vivid produces brighter, more saturated colors than sRGB Display
	Press Match	SWOP Press matches Specifications for Web Offset Publications Euroscale matches FOGRA glossy paper specification Commercial approximates U.S. commercial press target SNAP Press matches Specifications for Newsprint Advertising Production
	None	Applies no color correction (for use with other color management tools such as ICC profiles, ColorSync, or the PANTONE Color Chart for your printer)
	Black-and-White	Converts all colors to shades of gray

PHASER 8560 SUPPLIES, OPTIONS AND EXTENDED SERVICE AGREEMENTS

Supplies			
	Part Number	Description	Capacity
Toner Cartridges	108R00723	Genuine Xerox Solid Ink, Cyan (3 sticks)	Average 3,400 standard pages ¹
	108R00724	Genuine Xerox Solid Ink, Magenta (3 sticks)	Average 3,400 standard pages ¹
	108R00725	Genuine Xerox Solid Ink, Yellow (3 sticks)	Average 3,400 standard pages ¹
	108R00726	Genuine Xerox Solid Ink, Black (3 sticks)	Average 3,400 standard pages ²
	108R00727	Genuine Xerox Solid Ink, Black (6 sticks)	Average 6,800 standard pages ²
Routine Maintenance Items	108R00675	Standard-Capacity Maintenance Kit	Approximately 10,000 pages ³
	108R00676	Extended-Capacity Maintenance Kit	Approximately 30,000 pages ³
	109R00754	Waste Tray	N/A
	016-1845-00	Cleaning Kit	N/A

¹Average Continuous Composite CMY Yield in accordance with ISO/IEC 24711. Yield will vary based on image, area coverage and print mode.

²Average Black Continuous Yield in accordance with ISO/IEC 19798. Yield will vary based on image, area coverage and print mode.

³Declared Yield based on A4-/letter-size 20 lb. (75 gsm) pages. Yield will vary based on media type, size, weight, orientation and usage patterns.

Options		
	Part Number	Description
	097S03822	N to DN Configuration Upgrade
	097S03381	256 MB Phaser Memory (1 X 256MB) Lead Free, DDR Type
	097S03382	512 MB Phaser Memory (1 x 512MB) Lead Free, DDR Type
	097S03667	525-Sheet Feeder
	097S03318	System Cart
	097S03812	Productivity Kit (includes Personal Print, Secure/Proof/Saved Print, Extended Font Storage and Collation with hard drive)

Extended Service Agreements		
	Part Number	Description
	E63XXSA	Annual On-Site Service Agreement
	E63XXS3	2 years additional (total of 3 years)*
	E63XXS4	3 years additional (total of 4 years)*

*Available for purchase during first 90 days of product ownership.

SUPPORT AND INFORMATION SOURCES

UNRIVALED SERVICE AND SUPPORT

Behind every Xerox product is a large network of customer support that's unrivaled in the industry and available when you need it. Xerox service professionals use leading-edge technologies to keep you up and running. They're even linked to the engineers who designed your product, so you can be confident when you choose Xerox. And Genuine XEROX® supplies are always readily available.

TOTAL SATISFACTION GUARANTEED

The exclusive Xerox Total Satisfaction Guarantee, recognized as unique in the industry, covers every Phaser device that has been continuously maintained by Xerox or its authorized representatives under a Xerox express warranty or Xerox maintenance agreement. You decide when you're satisfied.

XEROX OFFICE SERVICES SUPPORT

Asset Management Services

- Asset Optimization and Tracking — Process and tools to optimize an enterprise's office output infrastructure and reduce hard costs.
- Break-Fix Management — Single point of ownership and management for break-fix service for all brands of office output devices, regardless of manufacturer
- Supplies Management — Process and tools to procure, monitor and replenish all document-related supplies proactively.

Imaging and Output Management Services

- Output Management — Single point of management of office output from all output devices, regardless of manufacturer
- Image Capture and Workflow — Cost-efficient solutions for capturing, managing, retrieving and distributing information into digital repositories.

Support Services

- Technology Procurement and Deployment — A creative and flexible end-to-end print/computer product acquisition solution that uses a single-point-of-contact model, while lowering the total cost of acquisition.
- Help Desk Services — A broad range of enterprise services, managed through a centralized single point of contact and delivered through either an onsite or off-site model.
- End User Services — Microsoft software implementation, IT project consulting and customer education.

Access Managed Services

- Student and Library Patron Access — Custom designed and implemented customer-managed solutions for student and library patron print access management.

ADDITIONAL INFORMATION SOURCES

Phaser 8560 Front Panel:

- The front panel offers tools and information pages to help with machine setup, feature selections, operational problem solutions, media feed and supply issues.

Customer Documentation Contains:

- Read Me First/Setup Poster
- Quick Reference Guide
- Training and Information CD
- System Administrator's CD
- CentreWare Network Services
- Print Drivers
- Management Tools

On the Web

Visit www.xerox.com/office for:

- Product, supplies and support information
- Downloading drivers
- Finding your local Xerox sales representative
- Online documentation

Visit www.xerox.com/office/support for:

Support and service information, including the same troubleshooting Knowledge Base used by Xerox Customer Support staff to provide the latest technical information on:

- Application issues
- Errors
- Print-quality issues
- Troubleshooting

NOTES:



Questions? Comments? Problems?

If you have any questions, please contact your Xerox sales representative or local reseller, call **1-877-362-6567** or visit us on the web at www.xerox.com/office



Free Manuals Download Website

<http://myh66.com>

<http://usermanuals.us>

<http://www.somanuals.com>

<http://www.4manuals.cc>

<http://www.manual-lib.com>

<http://www.404manual.com>

<http://www.luxmanual.com>

<http://aubethermostatmanual.com>

Golf course search by state

<http://golfingnear.com>

Email search by domain

<http://emailbydomain.com>

Auto manuals search

<http://auto.somanuals.com>

TV manuals search

<http://tv.somanuals.com>