

Xerox DocuMate® 515

Fast scanning directly to PDF format

- Scan documents at 15 pages per minute as PDF files*
- Holds up to 50 pages in Automatic Document Feeder (ADF)**
- Scan and share documents directly to network drives
- Includes TWAIN and Certified ISIS Driver
- Hi-speed USB 2.0 (USB 1.1 Compatible)

*200dpi, black & white

**20 lb / 75 gsm paper

Xerox DocuMate 515

The Xerox DocuMate 515 scanner is a compact and effective high-speed scanner which is perfect for workgroups and other decentralised scanning needs, enabling businesses to achieve high-levels of productivity by distributing fast, cost-effective scanners throughout the organization.

The DocuMate 515 has a 50 page Automatic Document Feeder (ADF) that scans at 15 pages per minute. It features 600 dpi optical resolution, 24-bit color, hi-speed USB 2.0 interface and scans everything from photos up to A4 documents.

The DocuMate 515 includes TWAIN and ISIS drivers plus an impressive software package.

Scanning at the Touch of a Button

Do you want to do more with the paper on your desk? Would you like to copy it, collate it, file it, search it, mail it and make it disappear? Sounds time consuming doesn't it? How about if you could do it all with just one touch?

The DocuMate 515 powered by Visioneer OneTouch® technology scans documents using three preset buttons for your most common destinations, yet they are completely configurable. This enables your document to be scanned with the proper settings for resolution, color, auto-crop, auto-straighten, file format and then delivered to virtually any application, folder or device – at the touch of a button!

Perfect Scans for Imperfect Originals

Visioneer OneTouch with Kofax® VRS™ (VirtualReScan®) technology is integrated into the scanner driver so that you get perfect scans from imperfect originals. VRS also eliminates the need to rescan documents through automatic cropping, straightening, brightness control and edge clean-up. All this is integrated into Visioneer OneTouch so your entire scanning requirements are achieved at the touch of a button.

Most new users in document imaging are not scanner experts, so simplified, point-and-click solutions that deliver high quality images and integration with business applications are essential.



Xerox DocuMate 515

Visioneer OneTouch



Visioneer OneTouch is an easy to use utility that connects the buttons on the DocuMate scanner with a powerful set of scanner settings to greatly improve the efficiency of your workflow – so that with one touch, the document is scanned automatically to email, or Word, or your printer, or simply a file folder.

In addition to scanning directly to all popular destinations, Visioneer OneTouch also links the DocuMate 515 with industry-leading document management software, such as Microsoft SharePoint®, DocuWare and Xerox DocuShare. – forming an easy to use workflow from paper to a selected destination. A Software Development Kit (SDK) is also available which provides the ability to develop specific links and integrate them into the Visioneer OneTouch control panel quickly and easily.

Kofax VRS technology

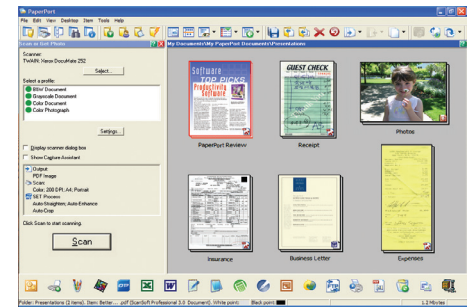
The Xerox DocuMate 515 integrates Kofax VRS image enhancement technology into the OneTouch scanning process. VRS is the gold-standard in image improvement technology. Imperfect originals are automatically turned into perfect scans that are easier to read. OCR results are dramatically improved, file size is decreased and scans look as clear as the originals. Every page is custom corrected automatically so you can batch together clean, laser quality documents with your imperfect originals – the results are amazing.



Nuance OmniPage Pro

Provides a precise OCR and layout retention solution, quickly turning scanned documents into editable, formatted text. The text can then be used in virtually any word processing, desktop publishing or web publishing program.

Nuance PaperPort



PaperPort is the easiest way to turn volumes of paper into organized digital files that you can quickly find, use and share. Stop wasting time looking for paper documents scattered around your office, the Xerox DocuMate 515 can scan documents directly to PDF files.

PaperPort supports one-click creation of PDF files from Microsoft Office documents and supports Print-to-PDF using other Microsoft Windows applications. A wide range of image formats can also be converted into PDF – including TIFF, MAX, JPG, BMP and GIF.

To avoid unnecessary printing of hard copy documents PaperPort can help you find any document on your PC instantly. Just type in a word or phrase and PaperPort All-in-One Search will bring up the correct document immediately.

Scan to network drives by adding new destinations to the PaperPort folder list allows scanning direct to the desired location. Scan straight to your My Documents folder or to a network drive.

DocuMate 515

	Product Specifications
Model Number	XDM5155D-WU
Scan Speed	
– Black & White, 200 dpi	15 ppm
– Color, 150 dpi	15 ppm
Optical Resolution	600 dpi
Output Bit Depth	24-bit color, 8-bit grayscale, 1-bit black & white
Scan Method	Fast Simplex ADF
Interface	Hi-Speed USB 2.0 (USB 1.1 compatible)
Dimensions	17.5"(w) x 13"(d) x 7"(h)
Weight	11.5 lbs.
ADF Maximum Document Size	8.5" x 14"
ADF Minimum Document Size	4.5" x 5.5"
ADF Capacity	50 sheets (20 lb / 75 gsm paper)
Duty Cycle	2,500 pages/day

For more information about the Xerox line of scanners, visit www.xeroxscanners.com

Minimum System Requirements

- Pentium IV or equivalent
- Windows 2000 SP4 or XP SP1 & 2 or Vista
- 512MB RAM (1GB for Vista)
- 350MB free hard disk space
- DVD-ROM drive
- Available USB Port

Contents

- DocuMate 515 Scanner
- Power Supply
- USB 2.0 Cable
- Quick Install Card
- Technical Support Card
- Paper Guide, and Paper Guide Extension
- Paper Stop
- Replacement ADF Pad
- DVD-ROM including:
 - User's Guide
 - Scanner Driver (TWAIN, ISIS & WIA)
 - Nuance PaperPort
 - Nuance OmniPage Pro
 - Visioneer OneTouch with Kofax VRS technology
 - EMC/Captiva Quick Scan Demo



Free Manuals Download Website

<http://myh66.com>

<http://usermanuals.us>

<http://www.somanuals.com>

<http://www.4manuals.cc>

<http://www.manual-lib.com>

<http://www.404manual.com>

<http://www.luxmanual.com>

<http://aubethermostatmanual.com>

Golf course search by state

<http://golfingnear.com>

Email search by domain

<http://emailbydomain.com>

Auto manuals search

<http://auto.somanuals.com>

TV manuals search

<http://tv.somanuals.com>