

XEROX.

Phaser® 6360



color laser printer

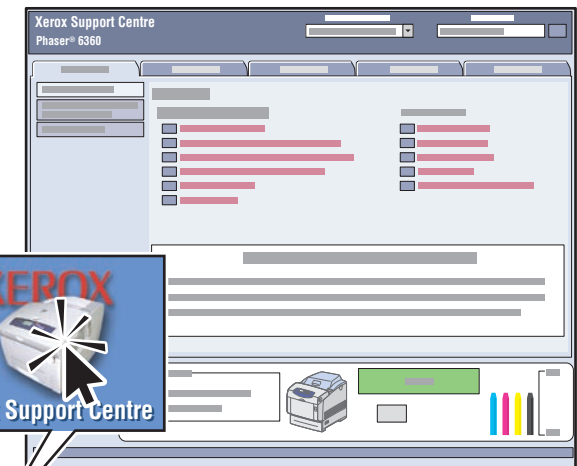
Quick Use Guide

Printer Tour
Supported Papers
Print Quality
Basic Printing
Information Pages
Supplies Info



More information

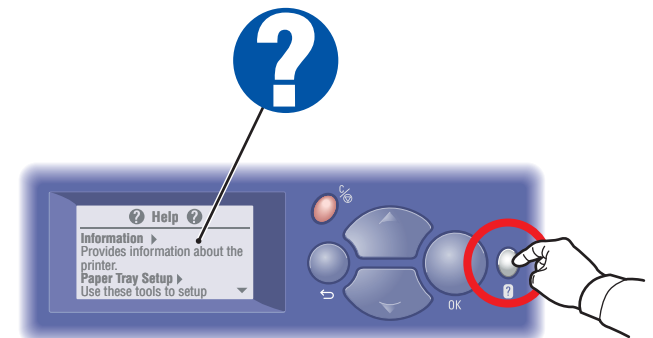
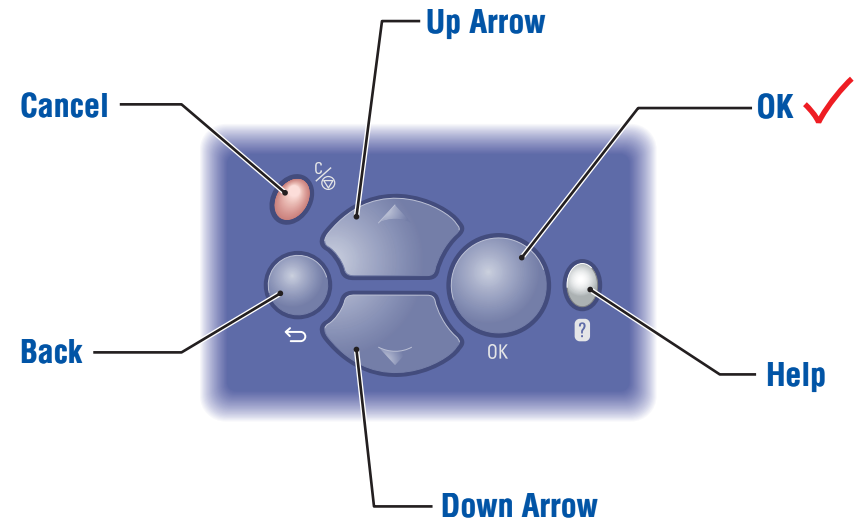
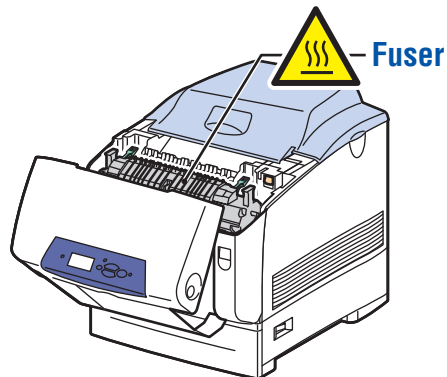
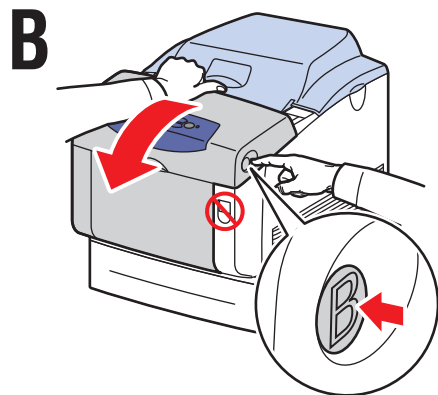
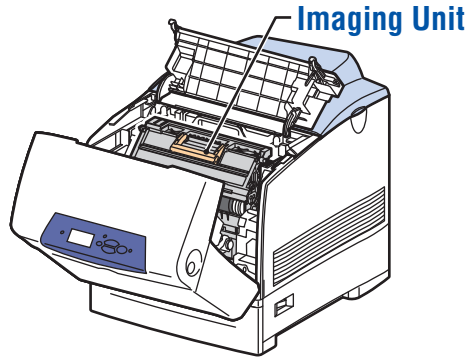
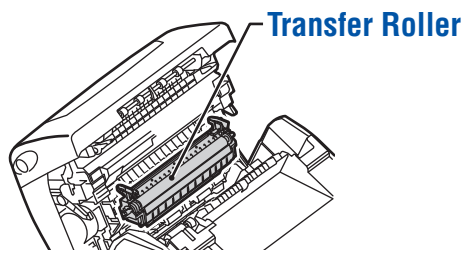
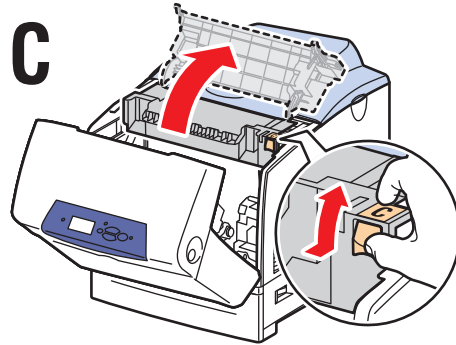
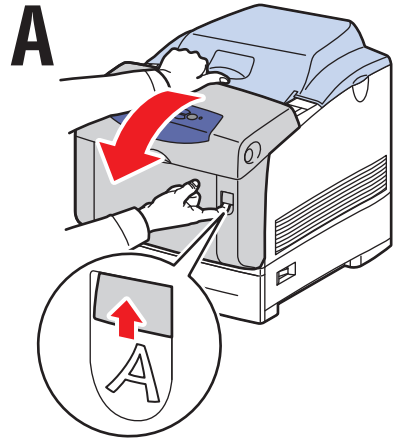
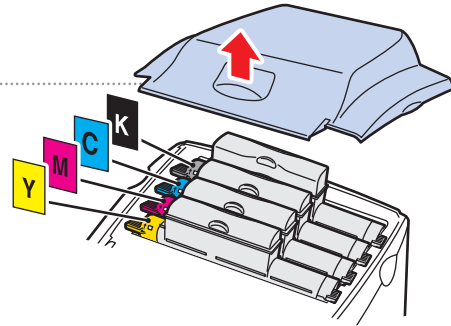
Xerox Support Centre



Utility installs with the printer driver, or go to www.xerox.com/office/6360support. Double-click the icon on the Windows desktop or Mac OS X dock.

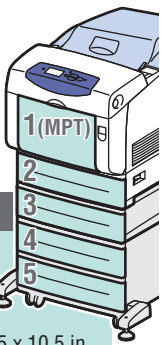
- **User manuals and video tutorials**
- **Troubleshooting**
- **Printer and supplies status**
- **User safety**
- **Material Safety Data Sheets**

Printer Tour



Help Button: Press at any time to display additional information about the message or menu.

Supported Papers



Tray 1 (MPT), 2 – 5

65 – 163 g/m²
(17 – 40 lb. Bond/
50 – 60 lb. Cover)

Executive..... 7.25 x 10.5 in.
A/Letter..... 8.5 x 11.0 in.
US Folio..... 8.5 x 13.0 in.
Legal..... 8.5 x 14.0 in.
B5 JIS..... 182 x 257 mm
A5..... 148 x 210 mm
A4..... 210 x 297 mm

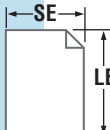
Tray 1 (MPT)


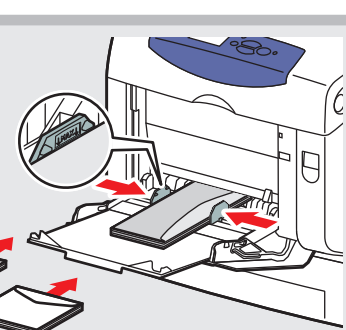
65 – 216 g/m²
(17 – 40 lb. Bond/
50 – 80 lb. Cover)

Statement..... 5.5 x 8.5 in.
A6..... 105 x 148 mm
ISO B5..... 176 x 250 mm

Custom..... (SE) x (LE)

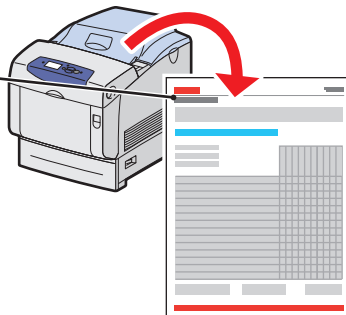
SE: 89 – 216 mm (3.5 – 8.5 in.)
LE: 140 – 914 mm (5.5 – 36.0 in.)



Monarch..... 3.87 x 7.5 in.
#10 Commercial..... 4.12 x 9.5 in.
A7..... 5.25 x 7.25 in.
DL..... 110 x 220 mm
C6..... 114 x 162 mm
C5..... 162 x 229 mm
B5..... 176 x 250 mm

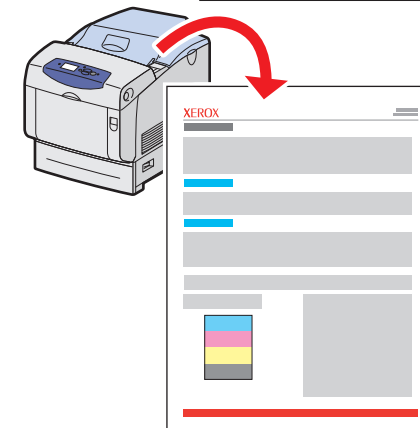
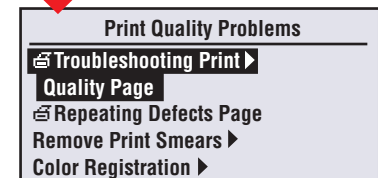
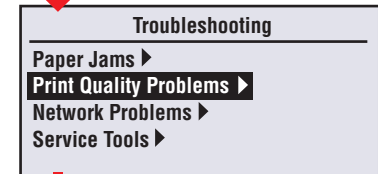
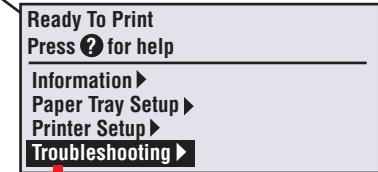
- Print the Paper Tips page for more information.
- See the [Printing Basics](#) chapter in the *User Guide*.



Print Quality

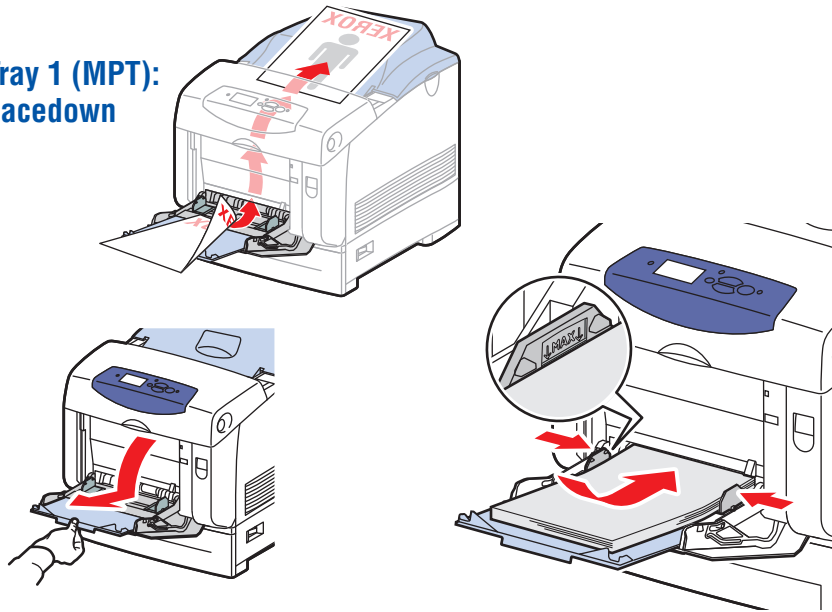
For Print-Quality Solutions:

- See the **Print-Quality Problems** menu and print the Troubleshooting Print Quality page.
- See the [Print Quality](#) chapter in the *User Guide*.

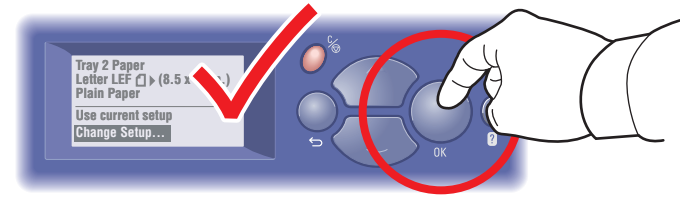
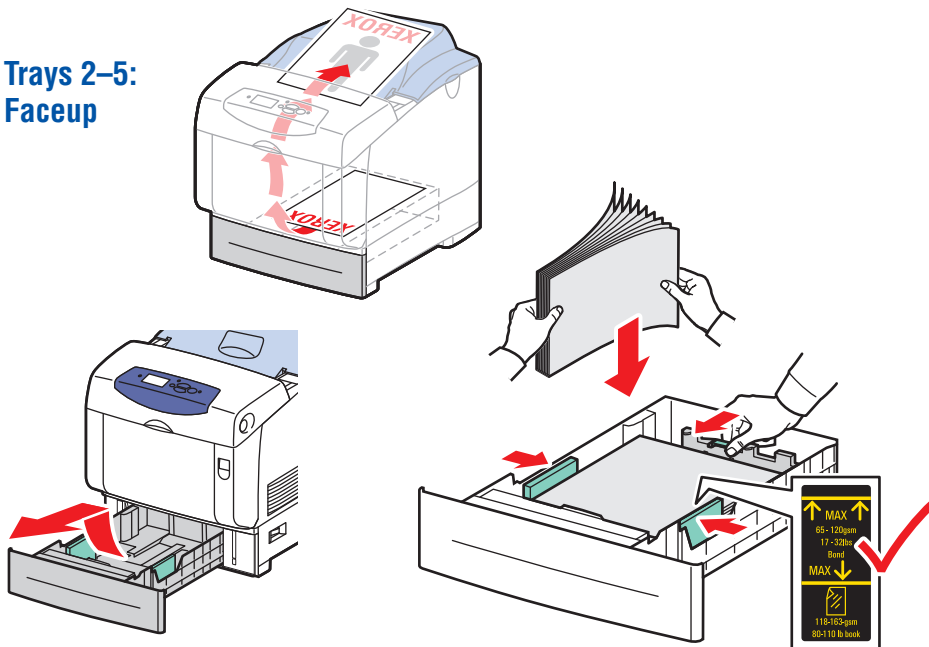


Basic Printing

Tray 1 (MPT): Facedown



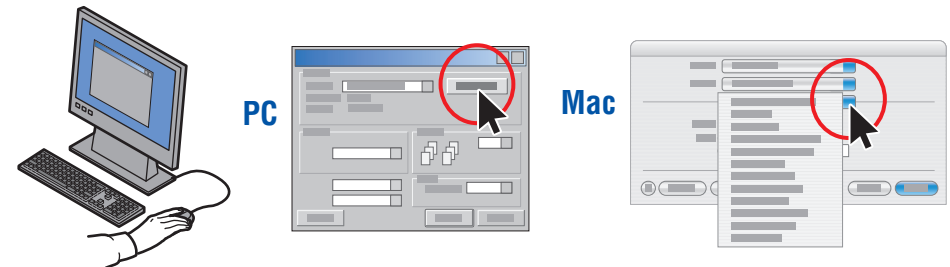
Trays 2-5: Faceup



When loading paper: Select appropriate settings on the control panel.

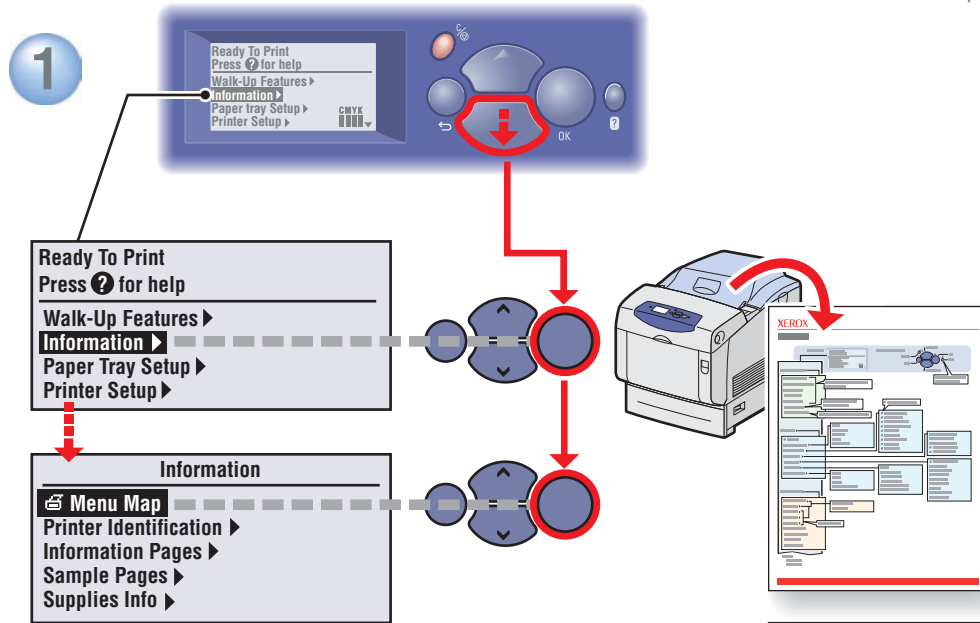
1 (MPT) 2 3 4 5	Tray 1 (MPT), 2 – 5
	65-90 g/m ² (17-24 lb. Bond) Plain Paper ✓
	85-120 g/m ² (22-32 lb. Bond) Heavy Plain Paper ✓
	100-163 g/m ² (36-60 lb. Cover) Thin Card Stock ✓

1 (MPT)	Tray 1 (MPT)
	160-216 g/m ² (59-80 lb. Cover) Thick Card Stock ✓

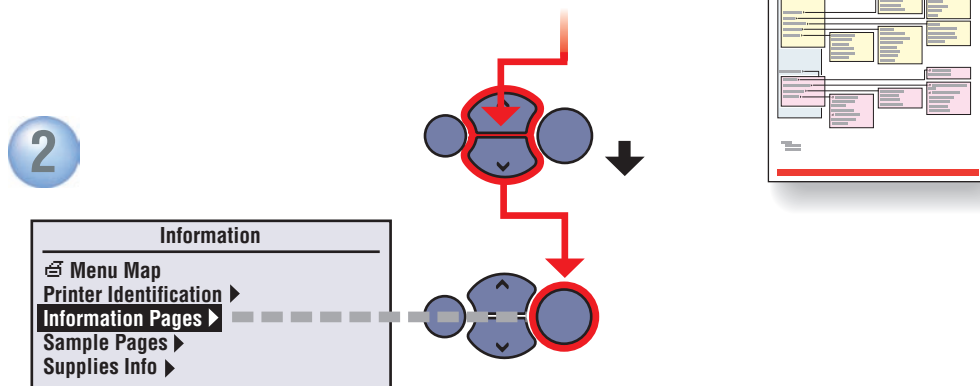


When Printing: Select properties. Use Xerox printer driver.

Information Pages



☞ = Prints an information page.



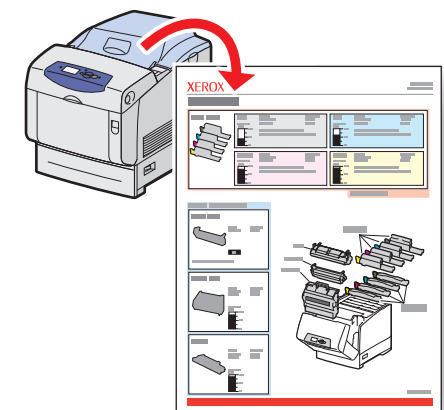
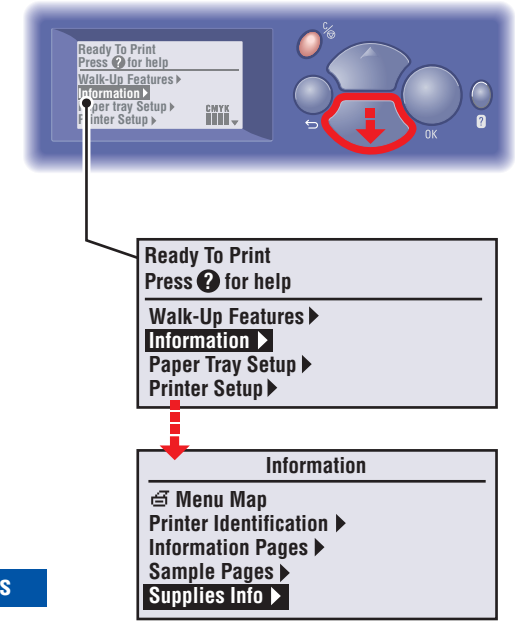
Supplies Info

For Supplies Information:

- See the **Supplies Info** menu and print the Supplies Usage page.
- See the **Supplies** tab in the Xerox Support Centre, contact your local reseller, or visit the Xerox Supplies website.



www.xerox.com/office/6360supplies



www.xerox.com/office/6360support

Free Manuals Download Website

<http://myh66.com>

<http://usermanuals.us>

<http://www.somanuals.com>

<http://www.4manuals.cc>

<http://www.manual-lib.com>

<http://www.404manual.com>

<http://www.luxmanual.com>

<http://aubethermostatmanual.com>

Golf course search by state

<http://golfingnear.com>

Email search by domain

<http://emailbydomain.com>

Auto manuals search

<http://auto.somanuals.com>

TV manuals search

<http://tv.somanuals.com>