

XEROX[®]

Wide Format

**XEROX FreeFlow[®]
Accxes[®] Firmware
12.7 b 114
Release Notes
(For YKE, YKE-N,
FRX, and LVX Controllers)**

December, 2007

Table of Contents

1 Introduction	3
1.1 FEATURE KEYS:	3
1.1.1 Feature Key Descriptions.....	3
2 Release Deliverables	5
2.1 Xerox 6030/6050 Wide Format Solution.....	5
2.2 Xerox 8850, 510dp Print System.....	5
2.3 Xerox Print System 721p.....	5
2.4 Xerox 6204 Wide Format Solution.....	5
2.5 Xerox 6050A Wide Format Solution.....	5
2.6 Xerox 8825/8830 Print System.....	6
3 Recommended Configurations	7
4 Release Installation	8
4.1 Accxes Client Tools	8
4.2 WebPMT.....	8
4.3 Unix	8
5 New Features of 12.7	9
5.1 IPv6 Support.....	9
5.2 Folder Support for Copies on 6204	9
5.3 PDF Transparency Flattening.....	9
5.4 Support for Camera JPEG files.....	9
6 Release Notes	10
6.1 Sets.....	10
6.2 6204 Specific.....	10
6.2.1 Copying ARCH-E size prints.....	10
6.2.2 Specifying titleblock for copies.....	10
6.3 6050/6030 Specific.....	11
6.3.1 Configuring the Remote printer.....	11
6.4 Controller.....	11
6.4.1 Stamp does not appear.....	11
6.4.2 Scaling interaction with “ANY”	11
6.4.3 Margins may cause image clipping.....	11
6.4.4 CGM Files and folding.....	11
6.5 Wide Format Scanner.....	11
6.5.1 Clear Last Image.....	12
6.5.2 Invert Feature and Recall Last Job.....	12
6.5.3 Scan-to-Print and Margins.....	12
6.5.4 Width Detection Sensors and Finishing.....	12
6.5.5 Background Suppression.....	12
6.5.6 Scaling shaded documents.....	12
6.5.7 50000015 errors while copying.....	12
6.5.8 Recalling sets.....	12
6.5.9 Washed out documents when scanning/copying.....	13
6.6 Manual Feed.....	13
6.6.1 Manual feed media source will be ignored when used with the Accxes Client Tools’ page composition feature.	13
6.7 Instant Access.....	13
6.7.1 InstantAccxes Folders not browse-able on IPv6	13
6.7.2 InstantAccxes Folders not accessible from MAC on IPv6	13
6.8 Web Print Manager Tool (WebPMT).....	13

6.8.1 Printer Queue – Main WebPMT Screen.....	13
6.8.2 German users only.....	14
6.8.3 Large Scaling Factors.....	14
6.8.4 HPGL Page – End of File.....	14
6.8.5 Display of Media Usage.....	14
6.8.6 Default PostScript Page Size.....	14
6.8.7 “Printer has been updated” message.....	14
6.8.8 Disk Image Overwrite.....	15
7 Customer Issues Resolved.....	16
7.1 The following customer issues were resolved in 12.7 b 114.....	16
7.2 The following customer issues were resolved in 12.6 b 101.....	16
7.3 The following customer issues were resolved in 12.5 b 120.....	17
7.4 The following customer issues were resolved in 12.2 b 107.....	17
7.5 The following customer issues were resolved in 12.2 b 102.....	18
7.6 The following customer issues were resolved in 12.2 b 101.....	18
7.7 The following customer issues were resolved in 12.1 b 110.....	19

1 Introduction

The FreeFlow® Accxes® Controller Firmware Release 12.7 b 114 provides multinational software for the Xerox 8825, 8830, 8850, 510dp, 721p, 6030, 6050, 6204, 6050A and for the Xerox Wide Format Scan System. The languages supported are English, Deutsch, Espanol, Francais, Italiano, Portugues, and Russian (Russian not supported on the printer UI for 8825, 8830, 8850, 510dp, 6030, 6050, and 6050A).

This document presents the following information about the FreeFlow® Accxes® Controller Release 12.7 build 114. The document applies to YKE, YKE-N, FRX, and LVX controllers and for simplicity they will simply be referred to as YKE.

- Release deliverables
- Recommended configurations
- Installation procedures
- Present supplemental information and known issues that are not mentioned in the published customer user documentation.
- New features

1.1 FEATURE KEYS:

1.1.1 Feature Key Descriptions

Print and Copy Feature Keys are enabled on the YKE controller by loading the “OS Enablement” feature key.

Additionally, the following functions will be unavailable until the appropriate feature key is loaded.

- DGN printing is enabled with an “Other CAD” feature key beginning in 12.5.
- JPEG 2000, PNG, BMP, and GIF printing is enabled with a Raster feature key beginning in 12.1.
- DWF printing is enabled with the “AutoCAD” feature key beginning in version 12.0.
- A 5D speed key has been introduced in 12.0 for the 6204.
- A 9D speed key has been introduced in 12.5 for the 6050A.
- Job Accounting Enables tracking media usage data for print, scan, and copy jobs. Account Management Tool, or some other external accounting tool, is used to assign User Id, Account Id, Printer Id associations, then collects and tallies the stored data from the printers).
- PostScript – Enables the interpretation of Adobe Postscript 3 and PDF 1.6 files.
- Disk Image Overwrite – Enables the security options for overwriting image data on the hard drive.

- Xerox 6030/6050 Wide Format Printer:
 - Print Server Enablement – Enables print and copy mode for remote printer.
- Scan to Net to create an electronic file from a scanned image.
- Scan to Print to send the scan to net image to the printer.
- Xerox Wide Format Scanner Features:
 - Color Enablement –Accxes - Allows color scanning when scan to net license is present.
 - Speed Enhancement Turbo II – Accxes - Enables 4 ips scan speed for 36” wide.
 - Speed Enhancement Turbo III – Accxes – Enables 7.33 ips Scans on YKE/YKE-N/FRX Controllers

For more information on Feature Keys, see the Feature Key Instructions and Coupon Exchange screens on the www.xes.com/keys.

2 Release Deliverables

2.1 Xerox 6030/6050 Wide Format Solution

The following executable is provided for the Xerox 6030/6050 Wide Format Solution and supports the Xerox Wide Format Scan System and GFI finisher.

YKE/YKEN/FRX/LVX Controller:

YKE_YKEN_FRX_LVX_6030_12_7b114.disk.bin (file size = 45,234,262 bytes)

2.2 Xerox 8850, 510dp Print System

The following executable is provided for the Xerox Wide Format 510dp and supports the Xerox Wide Format Scan System scanner and GFI finisher.

YKE/YKEN/FRX/LVX Controller:

YKE_YKEN_FRX_LVX_510DP_12_7b114.disk.bin (file size = 45,566,897 bytes)

2.3 Xerox Print System 721p

The following executable is provided for the Xerox Wide Format Print System 721p and supports the Xerox Wide Format Scan System scanner and GFI finisher.

YKE/YKEN/FRX/LVX Controller:

YKE_YKEN_FRX_LVX_721P_12_7b114.disk.bin (file size = 45,505,888 bytes)

2.4 Xerox 6204 Wide Format Solution

The following executable is provided for the Xerox 6204 Wide Format Solution and supports the Xerox Wide Format Scan System, the 6204 scanner, and GFI finisher for non-6204 scanner configurations.

YKEN/FRX/LVX Controller:

YKEN_FRXLVX_6204_12_7b114.disk.bin (file size = 47,544,934 bytes)

2.5 Xerox 6050A Wide Format Solution

The following executable is provided for the Xerox 6050A Wide Format Solution and supports the Xerox Wide Format Scan System and GFI finisher.

FRX/LVX Controller:

FRX_LVX_6050A_12_7b114.disk.bin (file size = 45,567,562 bytes)

2.6 Xerox 8825/8830 Print System

The following executable is provided for the Xerox Wide Format 8825/8830 and supports the Xerox Wide Format Scan System scanner and GFI finisher.

YKE/YKEN/FRX/LVX Controller:

YKE_YKEN_FRX_LVX_8830_12_7b114.disk.bin (file size = 45,560,123 bytes)

3 Recommended Configurations

The following table specifies the RAM requirements for the various systems and configurations supported by the FreeFlow Accxes controller.

System	YKE Controller		YKE-N Controller		FRX Controller		LVX Controller	
	Min	Recommend	Min	Recommend	Min	Recommend	Min	Recommend
510, 721, 6030, 6050, 8825, 8830, 8850	1GB	1GB	1GB	1GB	1GB	1GB	1GB	1GB
6204	NA	NA	1GB	1GB	1GB	1GB	1GB	1GB
6050A	NA	NA	NA	NA	1GB	1GB	1GB	1GB
Any System with AutoCAD, OtherCAD, or RASTER feature key	1GB	1GB	1GB	1GB	1GB	1GB	1GB	1GB

4 Release Installation

NOTES:

This version of Accxes (12.7 b 114) requires OS Install CD version 4.0 build 114 or higher. BSP Kernel revision 2.6.22.9-61.fc6 or later is also required. Service is required to upgrade from earlier Accxes® revisions.

Regarding scanner firmware revisions: If you are upgrading the firmware of a system containing a Xerox Wide Format Scanner, you must also ensure that the scanner firmware is upgraded, prior to upgrading the controller, to the following version:

- **Xerox Wide Format Scanner – version 2.2.4 or greater. Version 3.2.6 or greater is needed for full functionality.**

IMPORTANT NOTE: The controller will only accept the installation when there are no active jobs being processed.

4.1 Accxes Client Tools

Download the file named “<Controller>_<Printer>_<Accxes_version>.disk.bin”. A status sheet will be printed and indicate that the download was successful.

4.2 WebPMT

Select PRINTER DEFAULTS > UTILITIES > Upload File. Use the Browse button to select the “<Controller>_<Printer>_<Accxes_version>.disk.bin”. Click on the “Upload” button. A printed status sheet will indicate that the download was successful.

4.3 Unix

Download the software using LPR with the following command line:

```
lpr -P printername “<Controller>_<Printer>_<Accxes_version>.disk.bin”
```

A status sheet will be printed and indicate that the download was successful.

5 New Features of 12.7

5.1 IPv6 Support

The Accxes controller now supports IPv6 addressing. It will automatically search the local network for an IPv6 server and construct a Global address when it finds one. The IPv6 Addresses are displayed on the test print and on the WebPMT Network page. At least 1GB is required to run in an IPv6 environment. Depending on the network and the network servers it may take 5 minutes to obtain a global address.

5.2 Folder Support for Copies on 6204

Support has been added to allow folding of copies made on the 6204 copier when using the embedded scanner. The folding options are listed on the "More features" tab and allow the user to select fold program, title-block location, margins, etc.

5.3 PDF Transparency Flattening

A new setting for the Flattening level of PDF files can now be selected in the WebPMT > Emulations > Postscript page. This setting adjusts how much memory is used when flattening complex PDF files with large numbers of transparent objects. The setting is at 5 which produces the best image output and uses the most memory. If too much memory is required the level can be reduced to 1 which will conserve memory enabling highly complex files to print.

5.4 Support for Camera JPEG files

Support has been added to the JPEG interpreter to handle many of the EXIF tags which today's cameras insert into their JPEG files. This enhancement allows Accxes to properly render JPEG image files from most digital cameras.

6 Release Notes

The following information supplements the 12.5 customer user guides.

6.1 Sets

For 600 DPI engines (6030, 6050, 6050A, and 6204) the maximum number of ARCH E sized documents that will collate reliably in a set is 150. If the documents will not collate properly, one copy of the set will be printed only. This is for sets created using the scanner as well as printed sets submitted across the network.

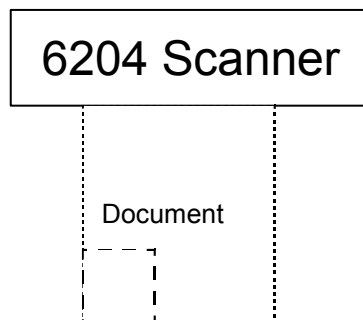
6.2 6204 Specific

6.2.1 Copying ARCH-E size prints

To maximize copying of ARCH-E size prints always copy them using the preset output format ARCH-E. When copied in synchro mode it is likely that ARCH-E documents will scan as 1220mm and will incur unneeded pauses between printing pages. The 6204 IOT will pause between pages which are greater than ARCH-E (48 inches 1219 mm) in length for the fuser to come all the way back to full temp even if it is in the nominal fuser temperature range.

6.2.2 Specifying titleblock for copies

When making a copy on the 6204 multi-function system which is intended to be folded you must specify the titleblock as seen through the facedown page. The example below shows the titleblock in the lower left corner:



6.3 6050/6030 Specific

6.3.1 Configuring the Remote printer

The address of the remote printer should not be changed while there is an active print job in the printer queue. If you attempt to change the address of the remote printer in this situation you will need to restart the controller in order to complete the address change.

6.4 Controller

6.4.1 Stamp does not appear

If the user tries to upload a stamp files that contains an invalid format, or if the Accounting Mode is set to "Enabled", no error message will be displayed. The WebPMT screen will display a message that the file was uploaded successfully and the stamp's filename will not appear in the "Printer Resident Stamps" list. To avoid this situation, set the Job Accounting mode to "Optional" before uploading stamps. The WebPMT has no knowledge of the validity of any file that is sent to the printer. File validation and error handling is done on the printer by the FreeFlow Accxes controller. The WebPMT only reports that the file was sent to the printer successfully.

6.4.2 Scaling interaction with "ANY"

The media size "ANY" will select the best sheet size for an image to prevent clipping. If a user specifies a media size of "ANY" and a scale factor that makes the image too large for any sheet size and mismatch mode is set to scale, the controller will select the largest sheet size and scale the image to fit on it.

If this is not the desired behavior, a specific sheet size can be selected, or the media mismatch mode can be set to QUERY.

6.4.3 Margins may cause image clipping

If the margins (TOP, BOTTOM, RIGHT and LEFT) are set to a non-zero value (5mm is the default) then that amount of whitespace will be added to the image before placing it on the media and could cause part of the image to be shifted off the page, or clipped. To correct this problem set the margins to 0.

6.4.4 CGM Files and folding

Certain CGM files contain rotation commands which can confuse the system when folding. If the titleblock is not visible or the plot is bypassed and not folded, change the titleblock location to obtain a correctly folded document.

6.5 Wide Format Scanner

6.5.1 Clear Last Image

When the "Clear Last Image" feature is selected on the Xerox Wide Format Scan System, it may take a few minutes for a Photo or Color mode scanned document to clear out. After scanning a document, this feature is accessed by selecting the "C" key on the scanner. It will bring up the "CLEAR SCANNED IMAGE" screen. Use the "Next" button to select "CLEAR LAST IMAGE", and then press "ENTER".

6.5.2 Invert Feature and Recall Last Job

Scan a document. Press the Transform key. Select "Recall Last Job". If the Invert feature (changes dark to light and vice versa) is selected before printing the recalled document, the document will not be inverted. It will need to be rescanned to get the inverted image.

6.5.3 Scan-to-Print and Margins

When performing a scan-to-print operation the scanned image is printed using the current printer processing defaults including margins. If the image scanned is exactly the width of the paper, then the processing default margins should be set to zero to prevent the image from being clipped or placed on a larger sheet of paper.

6.5.4 Width Detection Sensors and Finishing

When using the width detection sensors, if the document is a little bit off-center, this could cause problems for folding, as the document printed may be square. This is most problematic with A, B, and C sizes. Documents must be centered when using the sensors for width detection.

6.5.5 Background Suppression

The scanner uses the first few inches of a document to determine the background suppression. If the first few inches of the document being scanned are not representative of the entire document, either too much or too little of the background will be removed. If this occurs, try physically turning the document 90 degrees and scan it again. Continue with this until an edge is found that produces a good scan.

6.5.6 Scaling shaded documents

Scaling documents with error diffused shaded areas should be done in a photo mode to produce the best image quality. Line and normal modes tend to exaggerate the shading dots making them more visible.

6.5.7 50000015 errors while copying

Occasional 50000015 errors have been seen while scanning more than 128 documents on the 6030/6050 system. This happens when an experienced operator gets a significant number of pages ahead of the printer causing a queue that is larger than the system can hold. The solution is to wait for several of the pages to complete printing before copying any additional documents.

6.5.8 Recalling sets

When a set is recalled, the scanner UI settings are not set to reflect their state for the last page scaled, but are in a "neutral" state to prevent unintentional overriding of setting for the set. If a setting (like scale, page size, etc) is changed it will affect the entire document set.

6.5.9 Washed out documents when scanning/copying

When scanning/copying documents with very low contrast (like poor blue line or sepia documents) with dynamic background removal set to OFF can cause the system to threshold the document and produce a very washed out document. Enabling background removal will actually remove less of the background in this case.

6.6 Manual Feed

6.6.1 Manual feed media source will be ignored when used with the Accxes Client Tools' page composition feature.

Go to Accxes Client Tools > Job Option tab > Composition tab > Select Overlay Images > Media Source drop down menu. Although "Manual Feed" is listed as a choice of media source for page composition jobs, the print job will be treated as if AUTO media source was selected. If an appropriate roll of media is available, it will be printed on that media; otherwise, the job will query until the correct roll media is installed. In addition, other Media Source selections will be treated as AUTO if an appropriate roll of media is available in a different roll.

6.7 Instant Access

6.7.1 InstantAccxes Folders not browse-able on IPv6

When using InstantAccxes folders on an IPv6 network you must reference the system directly as shown below:

Vista: Start>Run> \\<Controller Name>

Linux: smb://<Controller Name>

6.7.2 InstantAccxes Folders not accessible from MAC on IPv6

InstantAccxes folders are not accessible to systems running MAC OS 10.4 or earlier versions on IPv6 networks.

6.8 Web Print Manager Tool (WebPMT)

6.8.1 Printer Queue – Main WebPMT Screen

The FreeFlow Accxes Controller supports a maximum of 120 active printer jobs in the queue and 8 active copy jobs. If subsequent jobs are sent before the 128th prints, ports will refuse connections and there can be scan errors; when there are fewer jobs in the queue, the jobs can then be resubmitted or scanned. Additionally, completed jobs will be removed from the queue display immediately to make room for the newly submitted print jobs. To avoid these issues, keep the number of active print jobs to under the 128 limit.

NOTE: More than 128 files can be sent from the Document Submit Tool as one print job, but all of the files in the print job must have printed before sending subsequent jobs, or the jobs will be refused.

6.8.2 German users only

Zum Drucken von Etiketten mit Umlauten DRUCKERVORGABEN > DRUCKER-EINSTELLUNG > Plot-Etiketten wählen.

Anschließend im Dropdown-Menü für Fonts einen der folgenden Fonts wählen: HP2 Stick Font Latin - 1 oder HP2 Stick font Latin - 1 – Proportional.

6.8.3 Large Scaling Factors

Images set to scale beyond the largest installed roll will not scale beyond the largest width unless a specific roll is selected, a specific page size is selected, or mismatch mode is set to something other than scaling. This is a behavior that has changed from previous releases (prior to 9.0).

For example: The largest roll installed is 36". Scaling is set to 999%. Submit an ARCH E sized drawing (Media Size = Any, Mismatch = Scaling). The drawing will not be scaled.

In order for the output to exhibit the desired scaling factor, one of the following conditions must be met:

What to do:

- Set Mismatch Mode to Substitute
- Request a Media Size of ARCH E via WebPMT, ACT, or the Driver
- Request a Media Size 36" Roll via WebPMT, ACT, or the Driver

6.8.4 HPGL Page – End of File

If the files are streamed via any port on the system, these are treated as a single job and no reset is done between them. However, if one uses the LPD protocol to send the files one at a time, the effect is that the printer is reset after each job. If the “Reinitialize after EOF” is set to be on, the FreeFlow Accxes firmware will reset the printing parameters after each plot file that is received by a serial port or a parallel port. To reset the HPGL parameters on the WebPMT, select Printer Defaults > Emulations > HPGL. Click on the box in front of “Reinitialize after EOF”. Click on the “UPDATE PRINTER” button.

6.8.5 Display of Media Usage

The WebPMT Linear Media Usage displays the Media Usage in METERS. The mechanical meters used on the Xerox Wide Format Print System 721p IOTs can be programmed using the IOT diagnostics and are determined by which mode (ANSI or ISO) that the IOT is programmed to operate in. The units of measurement may not be the same.

6.8.6 Default PostScript Page Size

If a PostScript job does not specify a page size (either by using a compatibility operator such as “letter”, or “a4”, or by using the setpagedevice operator /PageSize parameter), the page size used is the one specified by the Default PostScript Page Size parameter available via the printer user interface, or via the WebPMT.

6.8.7 “Printer has been updated” message

If the user presses the “UPDATE PRINTER” button without actually making changes first, the WebPMT will still return a message that the printer was updated. The WebPMT cannot distinguish a page that has been modified from one that has not been modified. This is because of the “stateless” nature of the http protocol and the fact that no events are generated (html) when text values are entered or items are selected. When the “UPDATE PRINTER” button is pressed, all the data on the form is gathered and sent to the server. If the data is valid, the printer is updated and “The printer was updated successfully.” message is returned. If inappropriate data is

sent, an error message is returned. To verify valid changes to printer settings, a test print can be printed to view the changed settings.

6.8.8 Disk Image Overwrite

6.8.8.1 OVERVIEW

The Disk Image Overwrite feature has two operations: Immediate and On Demand. The immediate operation overwrites image data on the hard drive immediately after it is no longer needed (i.e. When the page has printed). The On Demand operation cleans the entire disk. Both On Demand Image Overwrite and Immediate Image overwrite feature are configured by the system administrator, assuming that the system administrator password is set to a non-zero value.

6.8.8.2 ALGORITHM

The overwrite algorithm for both IIO and ODIO conforms to the U.S. Department of Defense Directive 5200.28-M (Section 7, Part 2, paragraph 7-202), and is common to all WorkCentre/WorkCentre Pros and AccXES controllers.

The algorithm for the Image Overwrite feature is:

Step 1: Pattern #1 is written to the sectors containing temporary files (IIO) or to the entire spooling area of the disk (ODIO). (hex value 0x35 (ASCII "5")).

Step 2: Pattern #2 is written to the sectors containing temporary files (IIO) or to the entire spooling area of the disk (ODIO). (hex value 0xCA (ASCII compliment of 5)).

Step 3: Pattern #3 is written to the sectors containing temporary files (IIO) or to the entire spooling area of the disk (ODIO). (hex value 0x97 (ASCII "ú")).

Step 4: 10% of the overwritten area is sampled to ensure Pattern #3 was properly written. The 10% sampling is accomplished by sampling a random 10% of the overwritten area.

See Online Help in WebPMT for more details about using the Image Overwrite feature.

7 Customer Issues Resolved

7.1 The following customer issues were resolved in 12.7 b 114

Issue Description	Problem	Resolution
SPAR# 041643618 – DWF markups printed on separate pages	A DWF file with markups would print the image and the markups on separate pages	The DWF interpreter was upgraded to support markups correctly
SPAR# 326784478 – Czech. Fonts in PDF files are not printing correctly.	Certain Czech. Fonts would not print correctly when used in PDF files.	The Adobe Postscript interpreter was upgraded to support these fonts.
SPAR 638826124 – speckled scan to net images	Copies and Scan-to-net files of near white paper showed tiny dots or speckles.	The TRC curve for the Wide Format scanner was modified to correctly reproduce these near white colors as white.
SPAR# 499374656 – Fold programs not correctly selected in InstantAccxes	The fold program selection on the WebPMT > InstantAccxes page did not allow the user to select the last two fold programs.	The InstantAccxes page was fixed to allow all fold programs to be selected.
SPAR# 578692123 – DWF memory Allocation	Certain complex DWF files would not print and issued an out of memory error message.	The DWF interpreter was enhanced to be more memory efficient so the files will now print.

7.2 The following customer issues were resolved in 12.6 b 101

Issue Description	Problem	Resolution
SPAR# 107111928 – Color scan to net produced 50000013 error on scanner UI.	Scanning color scan with output format of Packbits TIFF caused error with long originals.	Color TIFF scans accepted up to 10 feet.
SPAR# 350573348 – Recall of color scan template turns off background suppression and	Lightness/Darkness LEDs forced off when image type set to color for default template.	LEDs function properly when color selected as default image type.

lightness/darkness.		
---------------------	--	--

7.3 The following customer issues were resolved in 12.5 b 120

Issue Description	Problem	Resolution
SPAR# 683775429 – DHCP not setting gateway and netmask.	Accxes used calls to retrieve gateway and netmask that returned improper values.	Accxes properly queries the OS to get the gateway and netmask.
SPAR# 893836717 – CGM file not printed properly.	CGM plot file that plots ellipse with lines outside circle. Lines should be inside.	Lines printed inside circle.
Scan to FTP to HP printer fails.	An incompatibility existed between newer versions of the HP FTP server and Accxes when logging in.	Incompatibility was resolved to allow login process to succeed.

7.4 The following customer issues were resolved in 12.2 b 107

Issue Description	Problem	Resolution
SPAR# 335098581 – 6204 Copier Image Types	Selection of different image types on the 6204 scanner did not request specific image type processing.	The correct image type processing is now called for each image type that can be selected.
SPAR# 705110594 – PDF Font prints as boxes	Certain PDF files would print boxes for some fonts.	Fonts now print as expected.

7.5 The following customer issues were resolved in 12.2 b 102

Issue Description	Problem	Resolution
SPAR#568936962 – PDF not printing according to CropBox	MediaBox dimensions were always used for printing PDF files	When “use drawn area” is selected the “CropBox” dimensions are now used for image size.

7.6 The following customer issues were resolved in 12.2 b 101

Issue Description	Problem	Resolution
SPAR#628160720 – CGM pattern fill	Non-square CGM patterns did not print correctly.	Pattern handling was enhanced to support non-square patterns.
SPAR# 372757329 – Crash while printing PDF file	An invalid font definition in a PDF file causes the Adobe PS interpreter to crash.	Adobe provided a fix which no longer crashes, but renders the page without printing text using the font. The Adobe interpreter also provides no indication of problem.
SPAR# 76492593 – 6204 UI not recalling all STN settings .	When recalling a scanning template on the 6204, the format always reverts to TIFF.	Image type for scanning is now included in the scanner template.
SPAR# 312764109 – Novel FTP	Scan-to-FTP functionality was not working when submitting to certain versions of Novell.	Corrected QUIT command handling to correspond with Novell implementation.
6204 Image Type selection not functional	Copies made with different Image Type settings did not yield different image quality.	Enhanced the image quality of the non-default Image Type settings on the 6204 copier.

7.7 The following customer issues were resolved in 12.1 b 110

Issue Description	Problem	Resolution
SPAR# 668881988 – TrueType fonts not uniform width	When printing from AutoCAD 2006 application, many characters from TrueType fonts were printed with varying thicknesses.	The accuracy of the resolution conversion for fonts (and other objects) was increased to ensure consistent plotting of these elements.
SPAR# 557924048 – Certain PDF file not printing correctly	Certain standard fonts were not being printed correctly when referenced in certain PDF files.	Adobe corrected the problem with their code and it was integrated into v 12.1 of Accxes.
SPAR# 298073435 – WebPMT would only display English and Italian on 510 printers	On a 510 printer (or 8830, 8825, 8850) the new 12.0 Web interface would select the language based on secondary/primary language, not by the actual language selected..	The language selection for the 510 and 88XX series printers was corrected to use the actual language selected.
Issues with the Russian translation for the Web interface	Several Characters/words were not properly displayed on the Web interface for the Russian language.	The translation files were corrected and they should now display correctly.
SPAR #065384983 - Missing Data File generates error page offending command IMAGE.	The PDF file in this SPAR did not conform to the PDF specification, but it did open in Acrobat.	The PostScript “image” operator was re-defined to better handle invalid image data.

Prepared by:
Xerox Corporation
800 Phillips Road
Building 139-26A
Webster, New York 14580-9791
USA

©XEROX Inc. 2007. All rights reserved.

Printed in the United States of America

XEROX®, XEROX Wide Format 6204, 6030, 6050, 6050A, 510, 721, 8825, 8830, 8850, Xerox Wide Format Scan System, FreeFlow® Accxes®, and acronyms, are trademarks of XEROX CORPORATION.

12/2007

Page 20

Free Manuals Download Website

<http://myh66.com>

<http://usermanuals.us>

<http://www.somanuals.com>

<http://www.4manuals.cc>

<http://www.manual-lib.com>

<http://www.404manual.com>

<http://www.luxmanual.com>

<http://aubethermostatmanual.com>

Golf course search by state

<http://golfingnear.com>

Email search by domain

<http://emailbydomain.com>

Auto manuals search

<http://auto.somanuals.com>

TV manuals search

<http://tv.somanuals.com>