

# Scan to PC Desktop



Network Installation Guide

Version 9.0

*Scan to PC Desktop v9.0  
Network Installation Guide*

*Document version 4.0*

*This document provides instructions for installing the software associated with Scan to PC Desktop in a network environment.*

**NOTE:** Scan to PC Desktop Workgroup Edition products, including OmniPage, PaperPort PDF Converter Professional and Image Retriever are translated into English, French, Italian, German, Spanish, and Brazilian Portuguese. These products are designed to work with an operating system that is properly configured with the corresponding language. Use of these products with operating systems that are configured with non-supported languages is not recommended or supported.

*Xerox Corporation  
800 Phillips Rd.  
Webster, NY 14580-9791*

*Nuance Communications, Inc  
1 Wayside Road  
Burlington, MA 01803-4609*

*© 2007 Xerox Corporation and Nuance Communications, Inc. All rights reserved.*

*XEROX®, The Document Company®, the stylized X®, and the identifying product names and numbers herein are trademarks of XEROX CORPORATION.*

*Nuance and the Nuance logo are trademarks or registered trademarks of Nuance Communications, Inc. in the United States and other countries.*

*Windows® is a trademark of Microsoft Corporation in the United States and/or other countries. Other product names and images used in this guide may be trademarks or registered trademarks of their respective companies and are hereby acknowledged.*

# Scan to PC Desktop v9.0 Network Installation Guide

## Table of contents

<b>Scan to PC Desktop v9.0 Network Installation Guide.....</b>	<b>3</b>
<b>Table of contents .....</b>	<b>3</b>
<b>Introduction.....</b>	<b>4</b>
<b>Scan to PC Desktop software components.....</b>	<b>5</b>
<b>Windows 2000/2003 Server with Active Directory Support .....</b>	<b>6</b>
<b>Systems Management Server Support .....</b>	<b>7</b>
<b>Creating administrative images.....</b>	<b>8</b>
Creating administrative images of the components .....	8
<b>Deployment - Active Directory .....</b>	<b>10</b>
Prerequisites .....	10
Installation order .....	10
Deployment steps.....	10
<b>Deployment - SMS server.....</b>	<b>13</b>
Prerequisites .....	13
Installation order .....	13
Deployment steps.....	14
Examples (SMS server installation).....	15

## Introduction

This guide provides instructions for installing the software associated with *Scan to PC Desktop* in a network environment.

Targeted users are administrators, Information Technology specialists or programmers who set up or perform network installations. It assumes the reader is familiar with Microsoft Windows 2000/2003 Server with Active Directory or with Microsoft Systems Management Server (SMS), in addition to program package setup, advertising and distribution.

Network installation enables a network administrator to manage and distribute software applications without the need to visit each client system.

If you are upgrading and you have any previous versions of the Scan to PC Desktop software components on client systems, make sure you uninstall them first and only then proceed with the installation.

In the installation sequence, first administrative images of the applications (the components of *Scan to PC Desktop*) should be created on the server. Then the server should be configured to automatically "push" the applications onto the client machines.

## Scan to PC Desktop software components

*Scan to PC Desktop* is delivered in two CD-ROM variants: *Special Edition* and *Professional Edition*.

These two editions of *Scan to PC Desktop* comprise different software products from Nuance. All the installers of these software components support MSI (Windows Installer-based) distribution.

Software components for *Special Edition CD-ROM*:

	Software component
1	<i>PaperPort 11 SE</i>
2	<i>OmniPage SE 4</i>
3	<i>Image Retriever 7 SE</i>
4	<i>PaperPort Image Printer</i>

Software components for *Professional Edition CD-ROM*:

	Software component
1	<i>PaperPort Professional 11</i>
2	<i>OmniPage Professional 15</i>
3	<i>Image Retriever 7 Pro</i>
4	<i>PaperPort Image Printer</i>
5	<i>PDF Converter Professional 4</i>

Any combination of the products on the CD-ROMs can be installed under the following limitations:

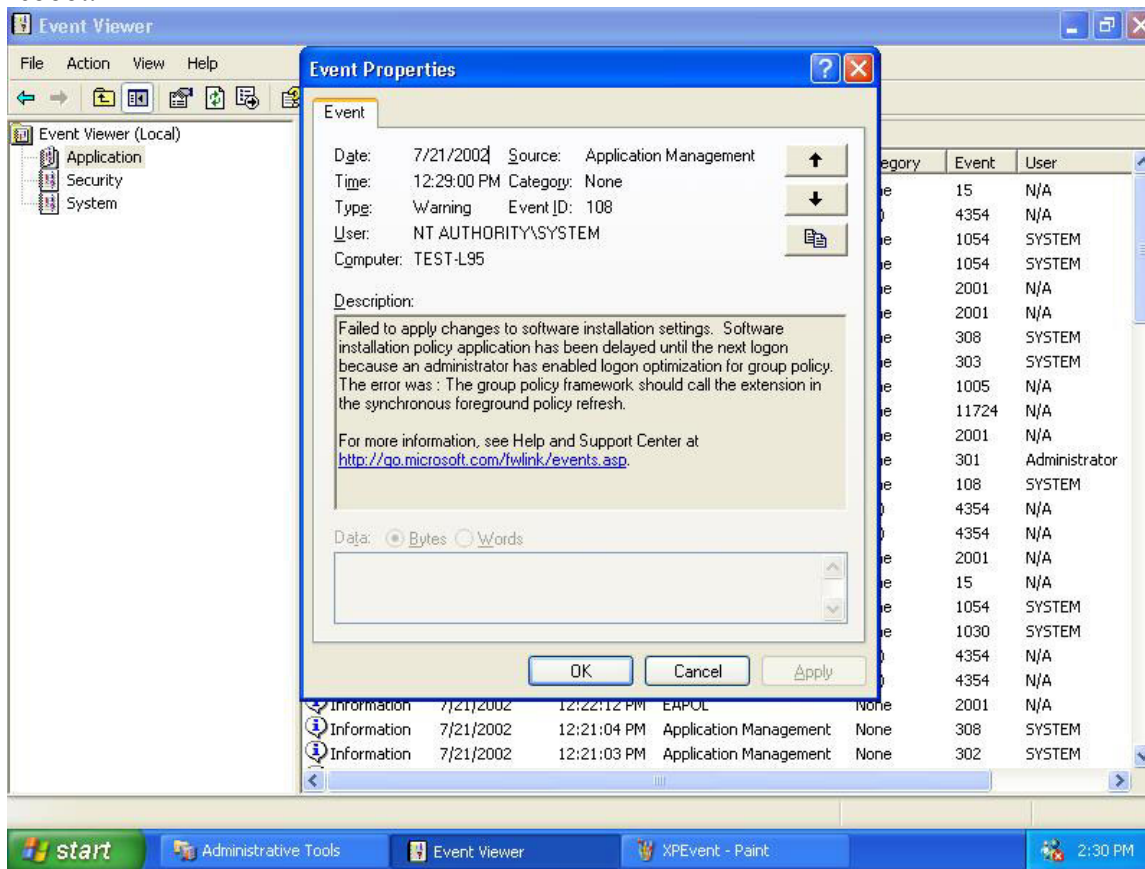
- 1.) To install Image Retriever, you must install PaperPort first.
- 2.) To ensure full functionality of *PaperPort Professional* and *OmniPage Professional 15*, *PDF Converter Professional 4* must also be installed.

You can create as many administrative images on a network location as many software components *Scan to PC Desktop* includes.

## Windows 2000/2003 Server with Active Directory Support

Active Directory is a feature of Windows 2000 Advanced Server and Windows 2003 Server. Group Policy, a component of Active Directory, includes a Software Installation snap-in that enables an administrator to create a network installation. The administrator can use this feature to install software to Windows 2000, Windows XP, and Windows Vista clients only. The snap-in cannot be used to install software to clients with older versions of the Windows operating system.

In general, Active Directory supports three main installation scenarios: *Publish to Users*, *Assign to Users*, and *Assign to Computers*. The software components of **Scan to PC Desktop** support the *Assign to Computers* scenario only. This will successfully install the software on next system reboot.



Installation can be delayed on Windows XP clients when the administrator enables logon optimization for group policy: for this type of installation, an entry can be viewed in the event log after the first reboot. The installation takes place silently, and the software is installed for all users of the given computer.

The screenshot above illustrates this case.

## Systems Management Server Support

Systems Management Server (SMS) provides a mechanism for pushing application installations out from the server to client systems. SMS supports all versions of Windows 2000, XP and Vista when installing products that use Windows Installer (MSI) technology. SMS requires that a client application be installed on all client machines. PaperPort was tested using SMS version 2.0 with Service Pack 2 and Windows 2000 Server with Service Pack 4. Be aware that it does not support Windows NT 4.0. The software components of ***Scan to PC Desktop*** were tested using SMS Server version 2.0 with Service Pack 4 and SMS Server 2003 with Service Pack 3.

SMS enables you to deploy a setup package *per User* or *per System*. The software components have been verified to work in the *per System* configuration only. The *per System* installation of the components can be configured to run either *unattended* or *attended*. Instructions for controlling this process are provided below.

All the software components of ***Scan to PC Desktop*** use Windows Installer Technology. The official Microsoft document describing the usage of Windows Installer-based applications with SMS (entitled "Deploying Windows Installer Setup Packages with Systems Management Server 2.0"). The document is available at

<http://www.microsoft.com/smsserver/techinfo/deployment/20/>

## Creating administrative images

This section describes how to create administrative images of the software components of *Scan to PC Desktop* onto the network.

Such an administrative installation will extract the necessary files into a network location specified during the installation. This location is also known as a *Software Distribution Point*. An administrative installation will not install any program files.

Administrators can run an administrative installation from the command line by using the `/a` command line option. Users in a workgroup who have access to this administrative image can then install the product from this source.

```
SETUP /a
or
MSIEXEC /a <MSI-filename>
```

The following options can be used together with the SETUP executable:

Setup option	Description
<code>/a</code>	Administrative installation option. This instructs SETUP.exe to perform an administrative installation instead of a normal installation.
<code>/v</code>	Precedes the list of arguments or properties that are passed to the Windows Installer.
<code>/L</code> (followed by the Windows Language Code)	If applicable, specifies the setup language to use for installation. The following language codes are supported: <ul style="list-style-type: none"><li>• 1031=German</li><li>• 1033=English</li><li>• 1034=Spanish</li><li>• 1036=French</li><li>• 1040=Italian</li><li>• 1046=Brazilian-Portuguese</li></ul>

## Creating administrative images of the components

### To create an administrative image on the network for any application

1. Use the below tables to locate the installer of *the application* on the CD-ROM.
2. Launch SETUP.exe or MSIEXEC with appropriate command line options including the administrative installation option:

```
SETUP /a
```

or

```
MSIEXEC /a "ScanSoft PaperPort 11.msi"
```

or e.g. for German setup language:

```
SETUP /a /L1031
```



3. If applicable, select a language for the administrative installation (not necessary if setup language was specified in the command line).
4. During installation, specify a target network location for the administrative image to be created.
5. Share this location (*Software Distribution Point*).

Software components and their installer locations for the *Special Edition*:

	<b>Software component</b>	<b>Installer location on the CD-ROM</b>	<b>Command</b>
1	<i>PaperPort 11 SE</i>	PP11SE\PaperPort	SETUP /A
2	<i>OmniPage SE 4</i>	OPSE4\OmniPage	SETUP /A
3	<i>Image Retriever 7 SE</i>	IR70SE	SETUP /A
4	<i>PaperPort Image Printer</i>	PP11SE\PaperPort\PrinterDriver	SETUP /A

Software components and their installer locations for the *Professional Edition*:

	<b>Software component</b>	<b>Installer location on the CD-ROM</b>	<b>Command</b>
1	<i>PaperPort Professional 11</i>	PP11PRO\PaperPort	SETUP /A
2	<i>OmniPage Professional 15</i>	OP15PRO\OmniPage	SETUP /A
3	<i>Image Retriever 7 Pro</i>	IR70PRO	SETUP /A
4	<i>PaperPort Image Printer</i>	PP11PRO\PaperPort\PrinterDriver	SETUP /A
5	<i>PDF Converter Professional 4</i>	PDFCONV4PRO\<os>\PDFConverterPro	SETUP /A

**Note:** *PDF Converter Professional 4* and *PaperPort Image Printer* have 32- and 64-bit versions. They are located at the folders <System32 or System64>, respectively. Use the ones appropriate for your target operating system.

## Deployment - Active Directory

This section describes how to install the software components of *Scan to PC Desktop* onto clients' systems using Active Directory.

### Prerequisites

- A working Active Directory environment.
- A *Software Distribution Point* (with administrative images of the software components)
- A deployment target computer that is a member of a domain, site, or organizational unit.
- MSI 3.1 installed on the target computer.

*Note:* Windows 2000 clients may not have MSI 3.1 installed. In such cases make sure you install it first. Download it from <http://support.microsoft.com/kb/89380>. This website also provides comprehensive information on MSI 3.1.

You can also find this installer in the folder of the PaperPort component

(PP11PRO\PaperPort\Utilities\WindowsInstaller-KB893803-v2-x86.exe) on the CD-ROM.

### Installation order

Before starting to install any component of *Scan to PC Desktop*, please ensure that InstallShield's Installscript engine is installed on the target computer.

Note that software components on the CD-ROM require Installscript v10 engine installer (ISSCRIPT10.msi) be installed.

You can find the Installscript v10 engine installer in the folder of the PaperPort component (in PP11PRO\PaperPort) on the CD-ROM.

Once the necessary Installscript engine is installed, the different components can be installed in any combination. Note that the installation of PaperPort must precede that of Image Retriever.

The preferred order of the installations of the different components is the following:

	Software component	Installer
1	<i>Installscript engine</i>	ISSCRIPT10.msi
2	<i>PaperPort Professional 11</i>	ScanSoft PaperPort 11.msi
3	<i>OmniPage Professional 15</i>	ScanSoft OmniPage 15.msi
4	<i>Image Retriever 7 Pro</i>	Image Retriever 7.msi
5	<i>PaperPort Image Printer</i>	PaperPort Image Printer.msi
6	<i>PDF Converter Professional 4</i>	ScanSoft PDF Professional 4.msi

### Deployment steps

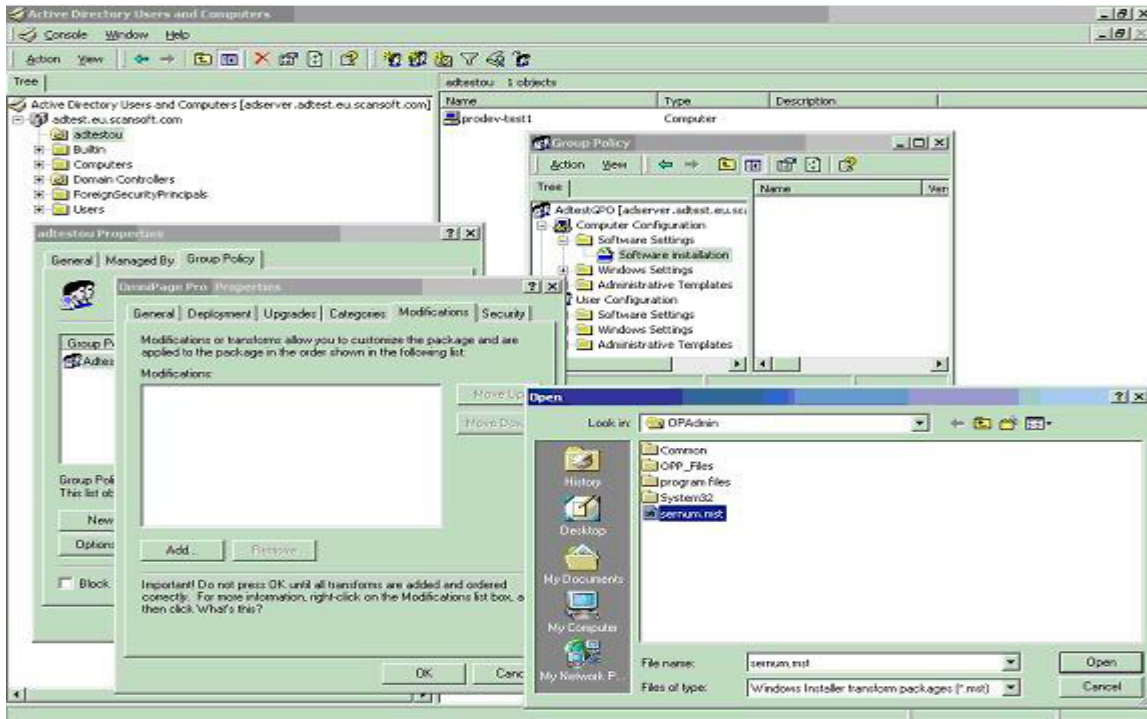
This procedure describes how to install a given component of *Scan to PC Desktop*.

You must repeat the steps below, as many times as many software component installations are needed.

1. Open Administrative Tools\Active Directory Users and Computers, select the object, then a domain, site, or organization unit. Create a Group Policy Object as follows:
  - a. Right-click the domain or the selected container.
  - b. Select **Properties**, click the **Group Policy** tab, select **New**, and then name the new policy.
  - c. Close the Active Directory Users and Computers dialog box.
2. Use Microsoft Management Console (MMC) to open the new Group Policy Object:
  - a. In the **Run** command dialog box, type **mmc** to open Console1.
  - b. Navigate to Console\Add\Remove Snap-in, click the **Add** button, and then select **Group Policy** from the menu list.
  - c. Select the Group Policy Object that you have just created.
3. Configure the new Group Policy Object to install the software component as follows:
  - a. Under the console root\Group Policy <name>, select **Computer Configuration**, **Software Settings**, right-click **Software Installation**, select **New**, and then **Package**.  
*Note: InstallShield's Installscript engine must be installed before installing any component of **Scan to PC Desktop**. That is, the Installscript engine installer (ISSCRIPT10.msi) must be the very first software installation package.*
  - b. Browse to the shared network folder (administrative image) that contains the component's installation package and select its installer for the package. (e.g. **ScanSoft PaperPort 11.msi**)  
The component properties dialog box opens. In the General tab, the name of the software component (e.g. PaperPort Professional 11) will be listed under Name.  
*Note: The installer names for the components are listed below in the Professional and Standard tables.*
  - c. In the Deployment tab, under Deployment Type, select **Assigned**, and make sure that **Basic** is selected under Installation User Interface Option.
  - d. To specify the installation language, go to the Modification tab, click the Add button and choose the appropriate language transform file.  
*Note: If the installer of the software component supports more than one UI languages, and you need a non-English installation, one of the language transform files must also be specified. (For example, to specify a German installation, add the file 1031.mst.) To read more about Windows Language Codes for the language transform files, see the chapter "Creating administrative images".*
  - e. Close the dialog box, and then select **Software Installation**.  
The settings for the installation package will be displayed on the right side of the screen, and the component will be installed to the targeted client systems upon their restart.

The installation is a "silent install" and is installed for all users on the specified computer.

*Note: For the correct installation of PaperPort, Windows 2000 clients require SP4.*



Software components and their installers for the *Special Edition*:

Software component	Installer
<i>InstallShield Installscrip engine</i>	ISSCRIPT10.msi
<i>PaperPort 11 SE</i>	ScanSoft PaperPort 11.msi
<i>OmniPage SE 4</i>	ScanSoft OmniPage SE 4.msi
<i>Image Retriever 7 SE</i>	Image Retriever 7.msi
<i>PaperPort Image Printer</i>	PaperPort Image Printer.msi

Software components and their installers for the *Professional Edition*:

Software component	Installer
<i>Installscrip engine</i>	ISSCRIPT10.msi
<i>PaperPort Professional 11</i>	ScanSoft PaperPort 11.msi
<i>OmniPage Professional 15</i>	ScanSoft OmniPage 15.msi
<i>PDF Converter Professional 4</i>	ScanSoft PDF Professional 4.msi
<i>Image Retriever 7 Pro</i>	Image Retriever 7.msi
<i>PaperPort Image Printer</i>	PaperPort Image Printer.msi

Microsoft introduced a new feature in Windows XP called Fast Logon Optimization. This feature will typically log the user in quickly even off the network.

This causes software installation via group policy to sometimes take many reboots to actually install managed software (you must reboot at least once after the group policy change just to refresh the policy on the local machine plus once to install the software).

For more details see the following Microsoft website:

<http://www.microsoft.com/technet/prodtechnol/windowsserver2003/library/Operations/ae11795f-6d3c-44b4-a231-7670dc6c05e1.msp>

## Deployment - SMS server

This section describes how to install software components of *Scan to PC Desktop* onto a client's system using SMS Server in "Create a new package and program" Wizard mode.

### Prerequisites

- A *Software Distribution Point* (with administrative images of the software components)
- A deployment target computer that is a member of a domain, site, or organizational unit.
- MSI 3.1 installed on the target computer.

### Notes

- Windows 2000 clients may not have MSI 3.1 installed. In such cases make sure you install it first. Download it from <http://support.microsoft.com/kb/89380>. This website also provides comprehensive information on MSI 3.1. You can also find this installer in the folder of the PaperPort component (PP11PRO\PaperPort\Utilities\WindowsInstaller-KB893803-v2-x86.exe) on the CD-ROM.
- SMS2003: Each component has to be installed with the 'No user is logged on' option.
- SMS2003: In case an error is encountered during installation, it is advised to use the /m command line switch.

*Under Windows Vista, installations should run with administrator privilege. In order to do this, please make sure that you run the command prompt as an Administrator.*

### Installation order

Before starting to install any component of *Scan to PC Desktop*, please ensure that InstallShield's Installscript engine be installed on the target computer.

You can find the Installscript v10 engine installer (ISSCRIPT10.msi) in the folder of the PaperPort component (in PP11PRO\PaperPort) on the CD-ROM.

Once the Installscript engine is installed, the different components can be installed in any combination.

*Note that successful installation of Image Retriever requires a preceding PaperPort installation.*

The preferred order of the installations of individual components is the following:

Software components and their installers for the *Special Edition*:

	Software component	Installer
1	<i>Installscript engine</i>	ISSCRIPT10.msi
2	<i>PaperPort 11 SE</i>	ScanSoft PaperPort 11.msi
3	<i>OmniPage SE 4</i>	ScanSoft OmniPage SE 4.msi
4	<i>Image Retriever 7 SE</i>	Image Retriever 7.msi
5	<i>PaperPort Image Printer</i>	PaperPort Image Printer.msi

Software components and their installers for the *Professional Edition*:

	Software component	Installer
1	<i>Installscrip engine</i>	ISSCRIPT10.msi
2	<i>PaperPort Professional 11</i>	ScanSoft PaperPort 11.msi
3	<i>OmniPage Professional 15</i>	ScanSoft OmniPage 15.msi
4	<i>PDF Converter Professional 4</i>	ScanSoft PDF Professional 4.msi
5	<i>Image Retriever 7 Pro</i>	Image Retriever 7.msi
6	<i>PaperPort Image Printer</i>	PaperPort Image Printer.msi

## Deployment steps

Please follow the instructions below to install the components of *Scan to PC Desktop* appropriately.

If the installer of any software component supports more than one UI languages, and a non-English installation is needed, one of the language transform files must also be specified in the command-line (Presented as `<LANG-TRFILE.mst>` below). For example, to specify a German installation, use the following transforms tag: `TRANSFORMS="1031.mst"`

**Note:** To read more about Windows Language Codes for the language transform files, see the chapter "Creating administrative images".

1. To install the *Installscrip engine* for any software component, use the following command-line:

```
MSIEXEC /i ISSCRIPT10.msi /qn
```

2. To install *PaperPort Professional 11*, use the following command-line:

```
MSIEXEC /i "ScanSoft PaperPort 11.msi" ALLUSERS=2  
TRANSFORMS=<LANG-TRFILE.mst> /qn
```

3. To install *PaperPort 11 SE*, use the following command-line:

```
MSIEXEC /i "ScanSoft PaperPort 11.msi" ALLUSERS=2  
TRANSFORMS=<LANG-TRFILE.mst> /qn
```

4. To install *OmniPage Professional 15*, use the following command-line:

```
MSIEXEC /i "ScanSoft OmniPage 15.msi" ALLUSERS=2  
TRANSFORMS=<LANG-TRFILE.mst> /qn
```

5. To install the *OmniPage SE 4*, use the following command-line:

```
MSIEXEC /i "ScanSoft OmniPage SE 4.msi" ALLUSERS=2  
TRANSFORMS=<LANG-TRFILE.mst> /qn
```

6. To install *Image Retriever 7 Pro* or *Image Retriever 7 SE* use the following command-line:

```
MSIEXEC /i "Image Retriever 7.msi" ALLUSERS=2  
TRANSFORMS=<LANG-TRFILE.mst> [<other_IR_install_params>] /qn
```

where the optional `<other_IR_install_params>` parameters can be used to customize Image Retriever at its install time. The following installer properties can be used for this purpose:

WATCHFOLDER, FOLDERWATCH, EMAILPROFILE, EMAILWATCH,  
POLINT and PPACTION.

For more details, please see the *Customized Install* section of the Image Retriever Guide.

7. To install the *PaperPort Image Printer*, use the following command-line:

```
MSIEXEC /i "PaperPort Image Printer.msi" ALLUSERS=2  
TRANSFORMS=<LANG-TRFILE.mst> /qn
```

8. To install *PDF Converter Professional 4*, use the following command-line:

```
MSIEXEC /i "ScanSoft PDF Professional 4.msi"  
TRANSFORMS=ADMIN.mst;<LANG-TRFILE.mst> ALLUSERS=2 /qn
```

You can now advertise the packages to your SMS clients.

### Examples (SMS server installation)

1. To install *PaperPort Professional 11* with **English user interface**, use the following command-line:

```
MSIEXEC /i "ScanSoft PaperPort 11.msi" ALLUSERS=2  
TRANSFORMS=1033.mst /qn
```

2. To install *PaperPort Professional 11* with **German user interface**, use the following command-line:

```
MSIEXEC /i "ScanSoft PaperPort 11.msi" ALLUSERS=2  
TRANSFORMS=1031.mst /qn
```

3. To install *PaperPort Image Printer* with **English user interface**, use the following command-line:

```
MSIEXEC /i "PaperPort Image Printer.msi" ALLUSERS=2  
TRANSFORMS=1033.mst /qn
```

4. To install *OmniPage Professional 15* with **English user interface**, use the following command-line:

```
MSIEXEC /i "ScanSoft OmniPage 15.msi" ALLUSERS=2  
TRANSFORMS=1033.mst /qn
```

5. To install *OmniPage Professional 15* with **German user interface**, use the following command-line:

```
MSIEXEC /i "ScanSoft OmniPage 15.msi" ALLUSERS=2  
TRANSFORMS=1031.mst /qn
```

6. To install *OmniPage SE 4* with **English user interface**, use the following command-line:

```
MSIEXEC /i "ScanSoft OmniPage SE 4.msi" ALLUSERS=2  
TRANSFORMS=1033.mst /qn
```

7. To install *PDF Converter Professional 4*, use the following command-line:

```
MSIEXEC /i "ScanSoft PDF Professional 4.msi"  
TRANSFORMS=ADMIN.mst;1033.mst ALLUSERS=2 /qn
```

8. To install *Image Retriever 7 Pro* or *Image Retriever 7 SE* with **English user interface**, use the following command-line:

```
MSIEXEC /i "Image Retriever 7.msi" ALLUSERS=2  
TRANSFORMS=1033.mst /qn
```

9. To install *Image Retriever 7 Pro* or *Image Retriever 7 SE* with **English user interface** by specifying the folder to watch and enable folder-watching, use the following command-line:

```
MSIEXEC /i "Image Retriever 7.msi" ALLUSERS=2  
TRANSFORMS=1033.mst  
WATCHFOLDER=\\OMEGA\SCANS FOLDERWATCH=1 /qn
```

10. To install *Image Retriever 7 Pro* or *Image Retriever 7 SE* with **German user interface**, by setting the default watch interval to 5 minutes, use the following command-line:

```
MSIEXEC /i "Image Retriever 7.msi" ALLUSERS=2  
TRANSFORMS=1031.mst POLINT=9 /qn
```

For the possible values, see the *Customized install* section of the Image Retriever Guide.



## Free Manuals Download Website

<http://myh66.com>

<http://usermanuals.us>

<http://www.somanuals.com>

<http://www.4manuals.cc>

<http://www.manual-lib.com>

<http://www.404manual.com>

<http://www.luxmanual.com>

<http://aubethermostatmanual.com>

Golf course search by state

<http://golfingnear.com>

Email search by domain

<http://emailbydomain.com>

Auto manuals search

<http://auto.somanuals.com>

TV manuals search

<http://tv.somanuals.com>