

March 2012



How Eye-Fi Works

Overview Flowcharts



© 2012 Visioneer, Inc. (A Xerox Trademark Licensee)

All rights reserved. XEROX®, XEROX and Design®, and DocToMe™ are registered trademarks of Xerox Corporation in the United States and/or other countries. BR1694

Document Version: 05-0873-000 (March 2012)

Visioneer® is a registered trademark of Visioneer, Inc. in the United States and other countries.

Windows® is a registered trademark of Microsoft Corporation.

Android™ is a trademark of Google, Inc. Picasa™ is a trademark of Google, Inc.

Universal Serial Bus is a trademark of USB Implementers Forum, Inc. *USB-IF) in the U.S. and other countries and is used under license.

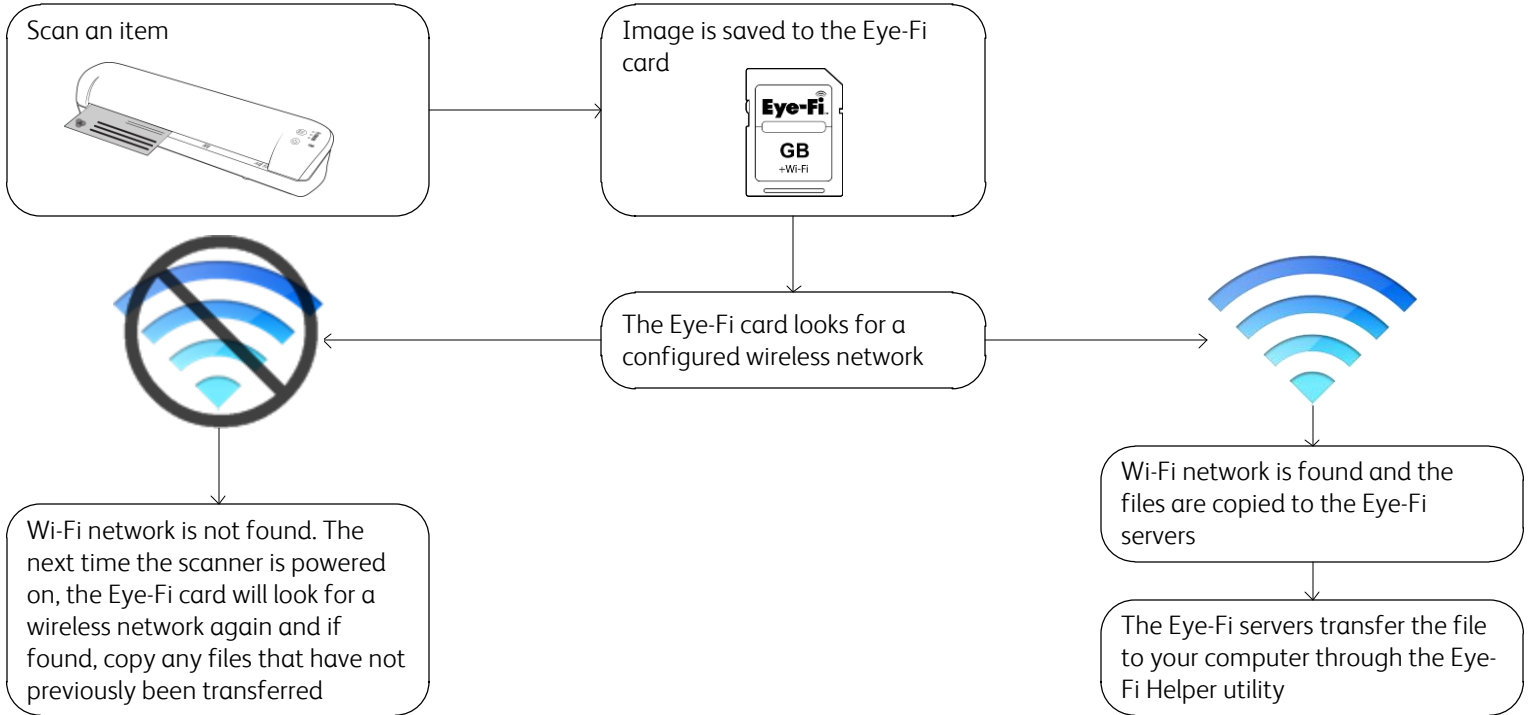
iOS® is a registered trademark of Cisco.

Eye-Fi® is a registered trademark of Eye-Fi Inc.

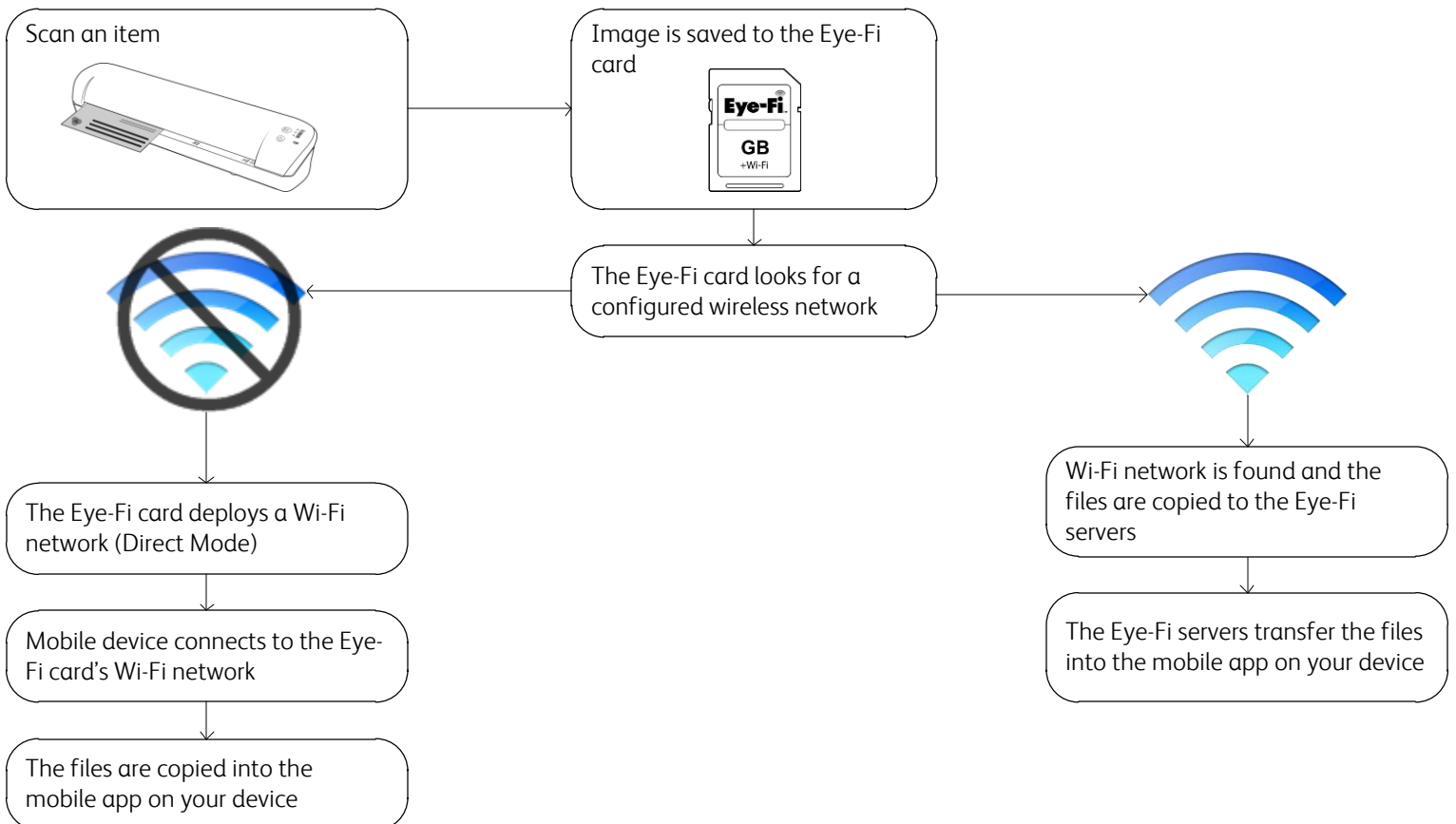
All other products mentioned herein may be trademarks of their respective companies and are hereby acknowledged.

How Eye-Fi Works

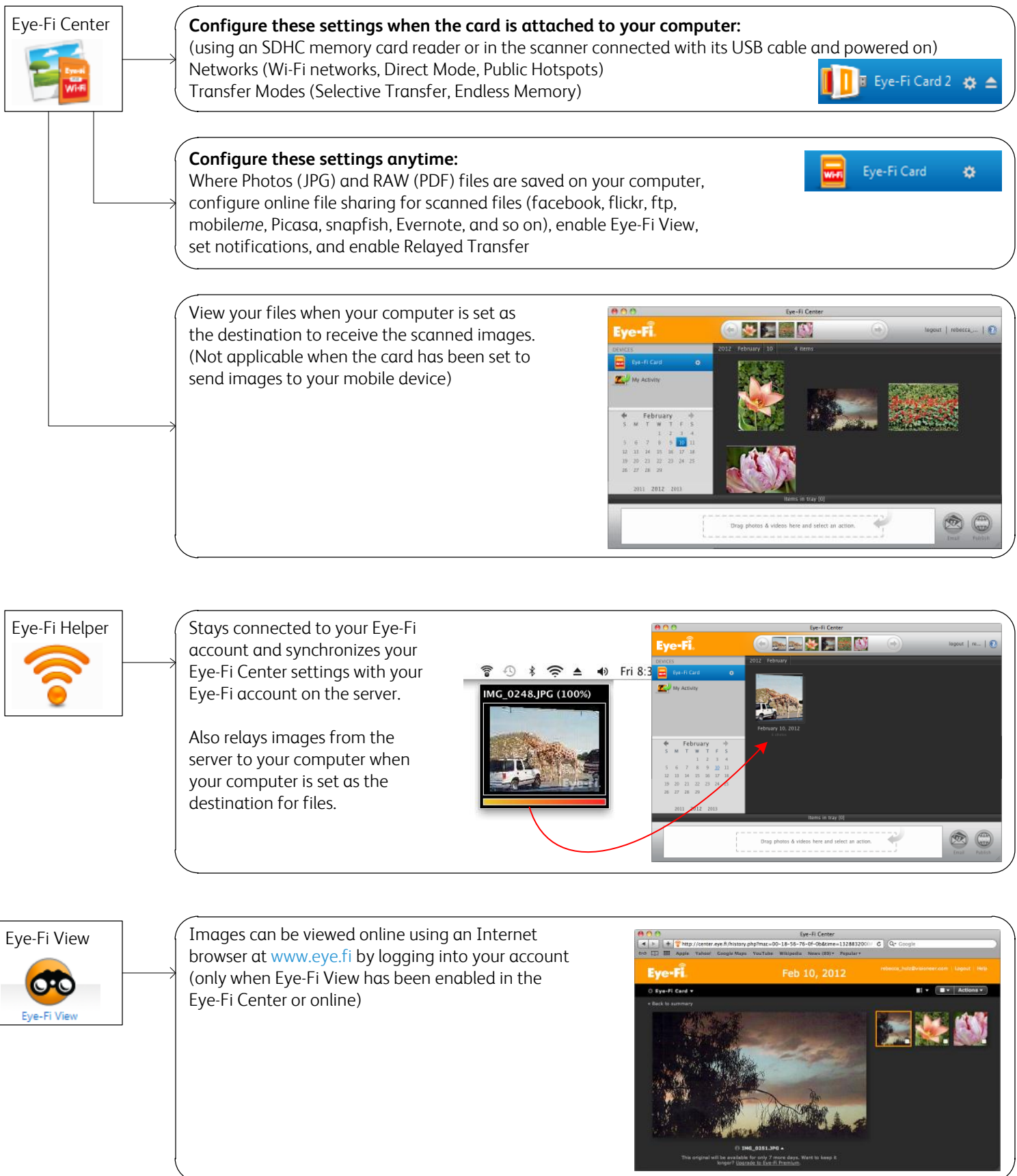
Scan and send files to a computer (with Eye-Fi Center installed)



Scan and send files to a mobile device (with a mobile app installed)

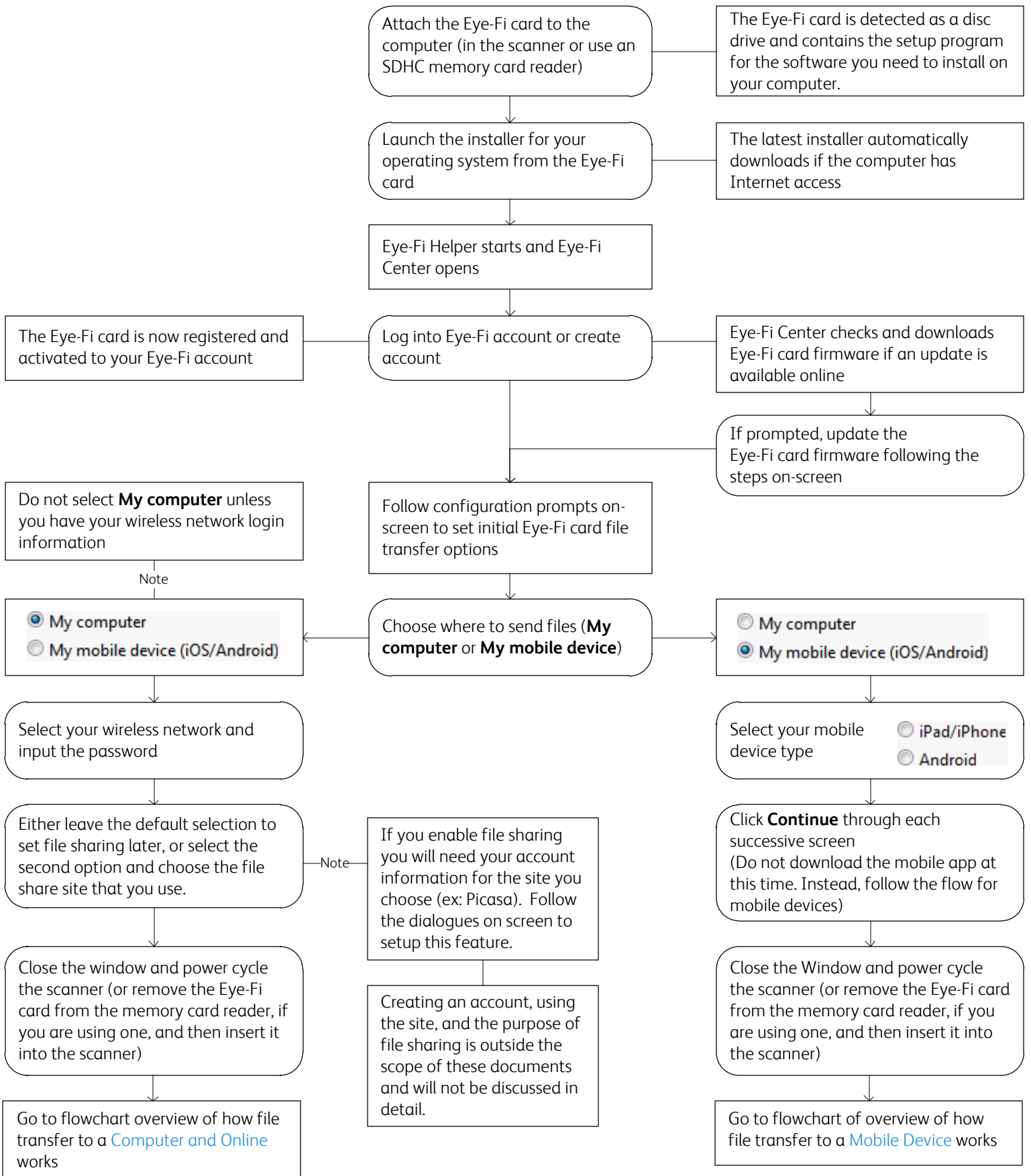


Overview for the Eye-Fi Center, Eye-Fi Helper, and Eye-Fi View

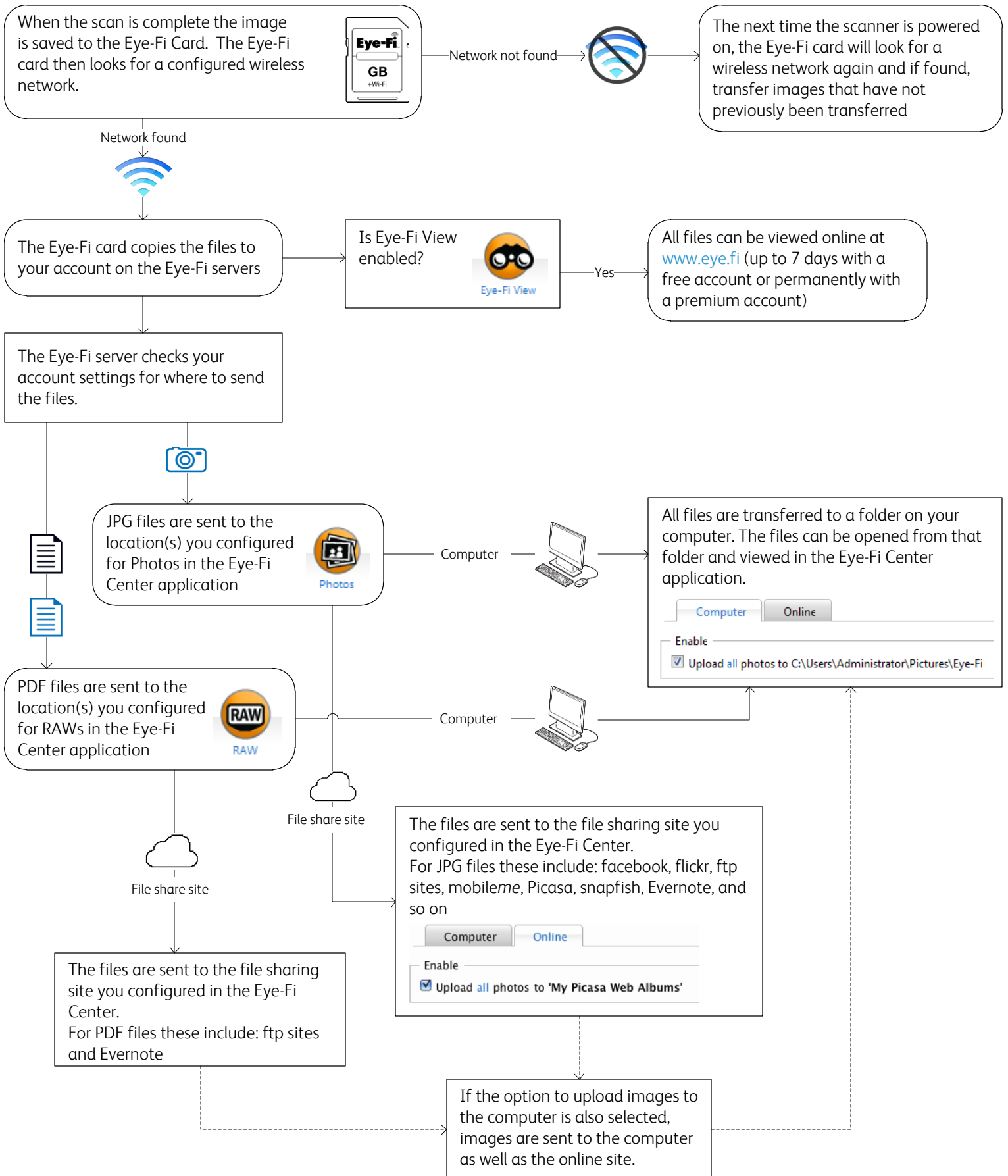


Please click on the help button in the Eye-Fi Center application to launch the Eye-Fi online help containing detailed information about the Eye-Fi software and configuration options.

Overview of Installing the Eye-Fi Software and Setting the Initial Card Options

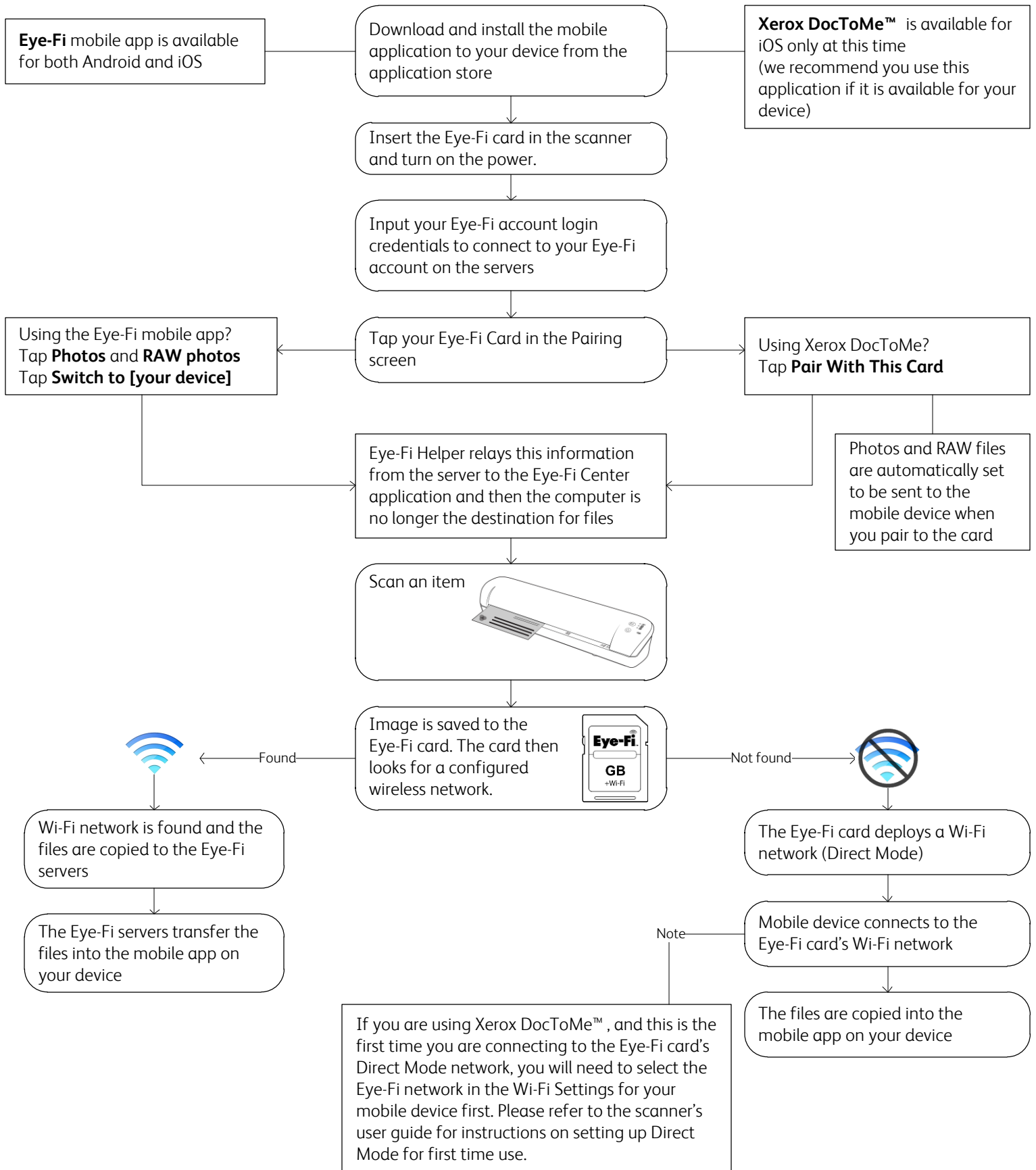


Overview of How File Transfer to a Computer and Online Works with Wi-Fi



Overview of How Mobile Devices Work with Wi-Fi and Direct Mode

This is an overview only. Detailed setup instructions, including setting up Direct Mode, are in the wireless scanning chapter of the scanner's user guide.



Free Manuals Download Website

<http://myh66.com>

<http://usermanuals.us>

<http://www.somanuals.com>

<http://www.4manuals.cc>

<http://www.manual-lib.com>

<http://www.404manual.com>

<http://www.luxmanual.com>

<http://aubethermostatmanual.com>

Golf course search by state

<http://golfingnear.com>

Email search by domain

<http://emailbydomain.com>

Auto manuals search

<http://auto.somanuals.com>

TV manuals search

<http://tv.somanuals.com>