

**XEROX**<sup>®</sup>

WorkCentre<sup>®</sup> Pro 423/428

Technology | Document Management | Consulting Services

print | copy | scan | fax | internet fax

Multiple functions.  
One level of **productivity**...  
the highest.



## The hub of your office productivity

The Xerox WorkCentre Pro 423/428 takes functions that have always been obstacles to office productivity and moves them to a new level of efficiency in one multifunction system. It offers all the advantages of networked document management by integrating digital printing, copying, scanning, and faxing in a single easy-to-use system. Your demanding office environment just got a little less demanding.

# Xerox WorkCentre Pro 423/428

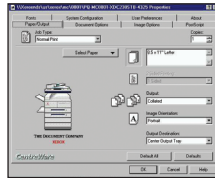
### Growing productivity, shrinking costs through workgroup printing for the entire office.

Xerox multifunction systems help you find better ways to do great work.

- Simple base configurations bring you all the essential features your office needs and a variety of options increase productivity even further.
- Saves time by eliminating the hassle of managing multiple, redundant devices.
- Reduces costs through one consumable package.
- Boosts up-time: Xerox multifunction systems are reliable digital devices. Fewer moving parts means less downtime and greater productivity.



*Add a finisher and boost productivity! Automatically staple collated sets as thick as 30 sheets.*



#### Internet Protocol Printing

Submit documents to be printed via the Internet when you're off-site



#### Network Printing

Information can be shared efficiently via the Internet and Intranet



#### Network PC

Hardcopy files can be scanned, stored, retrieved, printed and shared



#### Internet Fax

Reduce costs by faxing and scanning via the Internet



#### Fax

High quality walk-up faxing



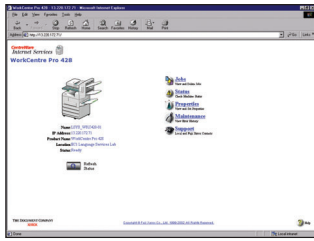
#### Copy/Scan

Give your hardcopy a new, digital life

# So many features... so little cost

## Optimize printing performance for workgroups.

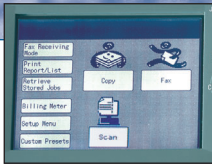
Don't just print. Produce. Really produce... with **network printing** and features that traditionally come with a higher price.



- An Embedded Web Server (EWS) allows you to monitor print jobs and run status using a PC browser. Users can set print and fax functions from the PC. Network administrators can better understand and support the office's printing needs.
- Print via the Internet from any location using Internet Protocol Printing (IPP).
- Secure Print holds confidential documents until you release them using a password. Sample Print reduces waste by printing one set for examination before printing the rest.
- Add watermarks to documents to clearly label them as "Confidential" or "Urgent."
- Connect directly to a workstation with either a **parallel** or **USB connection**, or to a **wide range of network environments** such as TCP/IP, Ethernet, Novell, and many others with the built-in Network Interface Card.

## Multiply your productivity.

The WorkCentre Pro 423/428 gives you high quality copies... quickly and reliably.

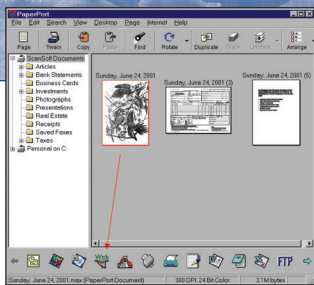


Customize the touch screen to display the features you use most.

- Digital features give your documents new life. Get sharper image quality and crisper looking copies. Print multiple sets without manual sorting or create booklets quickly and easily.
- Simplify your everyday document production. Copy transparencies and multiple handouts with a single operation.
- Create double-sided documents at near rated speeds.

## Convert hardcopy to digital.

Optional WorkCentre Pro 423/428 features come bundled with industry-leading scanning software, ScanSoft's PaperPort Deluxe 7.0 and TextBridge Pro Millennium Business Edition.



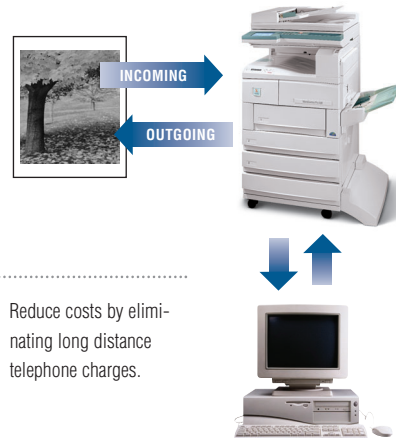
- Scan 1 or 2-sided and up to Ledger size originals. Use CentreWare Scanning Services 5.3 to store the TIFF files on the network.
- Use PaperPort Deluxe to view scanned documents, then drag and drop them into other desktop or network applications.
- OCR text documents with TextBridge and make them editable and available to all of your applications.



## Faxing as convenient as a phone call, as fast as an email.

*Traditional phone faxing has never been easier for you, or more beneficial for your bottom-line.*

- Fax 2-sided, Ledger, or bound documents at up to 600 dpi so your faxes, both in and out, look professional.
- PC Faxing allows you to eliminate the hardcopy and fax directly from your PC at 33.6 Kbps.
- Expecting a confidential document? Fax to Mailbox stores faxes securely until you are ready to receive them.



### A Total Office Document Management Solution.

The WorkCentre Pro 423/428 offers the features and intelligence to manage your documents at new levels of efficiency from data capture, information sharing, storing, printing and copying.

*Faxing is surprisingly easy when it uses the Internet instead of the phone lines.*

- Receive incoming faxes as fast as email. No more busy signals that block productivity.
- Reduce costs by eliminating long distance telephone charges.



Call today. For US and Canada product information call 1-877-362-6567. Or visit us at [www.xerox.com/office](http://www.xerox.com/office)

**Printer Specifications for Printer/Copier Configurations**

<b>Speed</b>	23/28 pages per minute
<b>Resolution</b>	2400 x 600 dpi interpolated with image enhancement technology
<b>Print Drivers</b>	PCL6 for Win 95/98/NT 4.0/2000/ME/XP (standard) PostScript for Win 95/98/NT 4.0/ 2000/ME/XP (optional) PostScript for Mac available only for Appletalk.
<b>Network Protocols</b>	SMB, TCP/IP, Netware 3.x, 4.x, 5.x, DHCP, IPP1.1, HTTP, AppleTalk/EtherTalk
<b>Administration Protocols</b>	DHCP, BOOTP, SNMP, WINS, DDNS
<b>Page Description Languages (PDL)</b>	PCL 6 (PCL 5e, HP-GL2) PostScript Level 3 (optional)
<b>Device Management</b>	Xerox CentreWare Web, Xerox CentreWare for Unicenter TNG, Tivoli NetView, and HP OpenView
<b>Device Memory</b>	96 MB and 15 GB print hard drive standard
<b>Interfaces</b>	USB, IEEE 1284 Parallel 10/100 Base T, Wireless Ethernet (IEEE 802.11b) via third-party adapters
<b>Output Management Solutions</b>	SAP Intelligent Barcode Utility provides built-in process intelligence that allows the printing of barcodes on any appropriately configured Adobe PostScript printer on the SAP network.
<b>Minimum System Requirements</b>	386/DX or better Processor, 8 MB RAM, CD ROM Drive, 9 MB free Hard Disk space

**Copier Specifications**

<b>Speed</b>	23/28 cpm (Letter LEF) 12/15.5 cpm (Ledger 11 x 17")
<b>Copies Per Minute (cpm)</b>	Approximately 4.5 sec or less Preset modes, plus Zoom R/E in 1% increments (25% - 400%)
<b>First Copy Out</b>	Scan Once/Print Many Electronic Pre-Collation
<b>Reduce/Enlarge</b>	
<b>Productivity</b>	
<b>Platen Size (Max original)</b>	11 x 17"
<b>DADF Size (Max original)</b>	11 x 142" (simplex), 11 x 17" (duplex)
<b>Image Quality Controls</b>	Text, Photo, Text and Photo
<b>Copy Quantity</b>	1-99

**Network Scanner (Optional)**

<b>Scanning Size</b>	Statement (5.5 x 8.5") to Ledger (11 x 17")
<b>Scanning System</b>	Fixed CCD Scan
<b>Data Compression</b>	MH, MR, MMR, JBIG
<b>Resolution/Halftone</b>	600 dpi, 400 dpi, 300 dpi, 200 dpi, 256 Tones
<b>Scanning Speed</b>	130mm/s = 36 sheets/min (Letter LEF) (1.65sec/Letter LEF)
<b>Compatible OS/Client</b>	Windows, 95/98/ME/XP, Windows NT 4.0, Windows 2000
<b>Protocol</b>	TCP/IP
<b>Scanning Mode</b>	Text, Text & Photo, Halftone
<b>Scanning Software</b>	Xerox CentreWare® 5.3, ScanSoft PaperPort Deluxe 7.0, TextBridge Pro Millennium Business Edition

**Fax (Optional)**

<b>Transmission Speed</b>	4 sec. per page (ITU-T (CCITT) No.1. Standard resolution ) Up to 33.6K bps
<b>Modem Speed</b>	MH, MR, MMR, JBIG
<b>Data Compression</b>	Letter, Legal, Ledger
<b>Sending Document Size</b>	200 x 100 dpi standard, 200 x 200 dpi, 400 x 400 dpi, 600 x 600 dpi
<b>Transmit Resolution</b>	200 dpi; 16, 12, 8 lines / mm
<b>Receive Resolution</b>	600 dpi, 400 dpi, 300 dpi, 200 dpi; 16, 12, 8 lines / mm
<b>Memory</b>	Standard: 202 pages (2 MB / MMR) Optional: 960 pages (1GB Fax Hard Disk Drive / MMR)
<b>Dialing</b>	
<b>Speed Dials</b>	200
<b>One Touch Dials</b>	70
<b>Group Dials</b>	50
<b>Document Size</b>	Letter (SEF), Legal (SEF), Ledger (SEF)
<b>Document Length Requirements</b>	Maximum: 142" Printer/copier configuration also requires Print Fax Interface Cable

**Internet Fax (Optional)**

<b>Maximum Document Size</b>	Ledger (11 x 17")
<b>Scanning Density</b>	600 dpi, 400 dpi, 300 dpi, 200 dpi; 16, 12, 8 lines/mm
<b>Format Profile</b>	Ledger (11 x 17") TIFF-FX TIFF-S; TIFF-F; TIFF-J (independent expansion 600 x 600 dpi)
<b>Protocol</b>	Transmission: MIME method, SMTP method Reception: SMTP, POP3

**Services Provided**

<b>Scan to Email</b>	Email sending of scanned image data
<b>Email to Print/Box</b>	Print/storing Email to a confidential box
<b>Email to Fax</b>	Fax transmission of Email received document
<b>Fax to Email</b>	Email transmission of a fax received document
<b>Requirements</b>	- Printer/Copier configuration - Fax & Scan kit - Internet fax kit - Network connection with communication through TCP/IP - The environment should allow the sending and receiving of E-mails.

**Media Handling**

<b>Input Paper Capacity</b>	Three 500 sheet trays
<b>Standard trays</b>	100 sheets
<b>Bypass tray</b>	500 sheets
<b>Output Capacity</b>	
<b>Paper Weight</b>	60 g/m <sup>2</sup> -150 g/m <sup>2</sup> or 16 lbs to 40 lbs
<b>Standard trays</b>	60 g/m <sup>2</sup> -150 g/m <sup>2</sup> or 16 lbs to 40 lbs
<b>Bypass tray</b>	



**Specifications**

<b>Paper Sizes</b>	
<b>Tray 1</b>	Statement (5.5 x 8.5") - Letter (8.5 x 11")
<b>Tray 2-4</b>	Letter (8.5 x 11"), Legal (8.5 x 14"), Ledger (11 x 17") 8.5 x 5.5" - 11 x 17"
<b>Bypass tray</b>	
<b>Duplex Automatic Document Handler</b>	50 sheets
<b>General</b>	
<b>Weight (Base Configurations)</b>	
<b>Copier</b>	225 lbs. or 120 kg
<b>Printer/Copier</b>	237 lbs. or 107.5 kg
<b>Dimensions (L x D x H)</b>	755 x 669 x 1125 mm 29.7 x 26.3 x 44.3"
<b>Voltage</b>	110V to 127V +6%/-10%, 50/60 Hz
<b>Power Consumption</b>	1500 watts maximum
<b>Power Saver Mode</b>	WCP 423: 93 watts max. WCP 428: 112 watts max.
<b>Operating Environment</b>	
<b>Temperature</b>	10° - 35°C (50° to 95°F)
<b>Relative Humidity</b>	15% - 85% RH (non condensing)
<b>Exp. Monthly Volume</b>	15,000
<b>Duty Cycle</b>	100,000

**Supplies**

<b>Approximate Yield:</b>	
<b>Toner/Drum Single Cartridge</b>	24K @ 6% area coverage *28.8K @ 5% area coverage *calculated
<b>Optional Staple Cartridge</b>	3,000 staples per cartridge, 3 cartridges per package

**Safety & Certifications**

- Listed by Underwriters Laboratories, Inc. in compliance with requirements for the USA and Canada.
- Windows Hardware Quality Labs

**Accessories**

<b>Fourth Input Tray (500 sheets)</b>	Complements standard 1600 page input supply
<b>Finisher/Stapler</b>	2 bins: 200 sheet capacity – face up and 500 sheet capacity – staples up to 30 sheets
<b>PostScript 3 Kit</b>	PostScript 3 for printer device
<b>Network Print Kit</b>	Required to enable print functionality. Includes NIC card, 64MB expansion memory, 15GB Print Hard Disk. This kit is standard with the Printer/Copier configuration (Pi).
<b>Fax &amp; Scan Kit</b>	Required to enable standalone fax and Scan to mailbox
<b>Internet Fax Kit</b>	Required to enable Scan to email, email to Print/Box, email to Fax, Fax to email
<b>CentreWare Scan Services</b>	Required to enable Network Scanning (Scan-to-File/Server). Network Administrator or Analyst with administrative rights is required to facilitate proper setup.
<b>Fax Hard Disk Drive (1GB)</b>	Increases fax memory from 200 to 960 pages. Recommended to enable transmission of higher resolution images and to increase mailbox memory for scanning to mailbox jobs.

Configuration availability may vary by location. © 2005 Xerox Corporation. All rights reserved. XEROX®, WorkCentre®, and CentreWare® are trademarks of Xerox Corporation. In support of Xerox's environmental leadership goals, the Xerox WorkCentre Pro 423/428 may contain some recycled components that are reconditioned. Windows and Windows NT are trademarks of Microsoft Corp. PaperPort® and TextBridge® are registered trademarks of ScanSoft, Inc. All other trademarks or registered trademarks are the property of their respective owners. Xerox Corporation reserves the right at any time to change the specifications of the equipment described herein without notice. 12/03, 5/04, 9/04, 4/05 610P715550C 423BR-01UD

## Free Manuals Download Website

<http://myh66.com>

<http://usermanuals.us>

<http://www.somanuals.com>

<http://www.4manuals.cc>

<http://www.manual-lib.com>

<http://www.404manual.com>

<http://www.luxmanual.com>

<http://aubethermostatmanual.com>

Golf course search by state

<http://golfingnear.com>

Email search by domain

<http://emailbydomain.com>

Auto manuals search

<http://auto.somanuals.com>

TV manuals search

<http://tv.somanuals.com>