

SAGE MAS 500



Sage MAS 500 Version 7.2

Pre-Release Guide

January 2008

sage
software
Your business in mind.

Table of Contents

Overview	1
Availability	1
New Modules	2
Business Insights Dashboard	2
Data Import Manager	3
Starship Freight v9.9	5
Usability Enhancements	7
Warehouse Automation	7
Project Accounting	8
Sage MAS 500 Office Update	8
Business Insights Explorer	10
New Common End User License Agreement	10
Documentation	10
Sage Software Complete Solutions	16
Sage SalesLogix 7.2	16
Sage Abra HRMS v7.6	16
Sage FAS 500 v2008.1	20
Sage Timesheet v9.61	21
Third Party Considerations	21
Crystal Reports v10.0	21
Microsoft FRx v6.7 SP 10	21
StarShip Parcel v9.9	21
Technology Features	21
Data Migration	21
Microsoft Vista UAC Support	21
Platform Support Overview	22
Minimum System Requirements	22
Retirements	22
eExecutive	22

Overview

Sage MAS 500's rich heritage as a technology leader has been a key foundation of the solution for more than one decade. As the first Mid-Market solution to develop an ERP application from the ground-up based on SQL Server and Visual Basic Technology, Sage MAS 500 has evolved by taking advantage of newer technologies that provide the value and flexibility that Sage MAS 500 users have come to rely on. From innovative ecommerce solutions to the latest .NET based Business Insights Explorer module, Sage MAS 500 continues to pursue technology solutions that increase user productivity and lower overall costs.

The Sage MAS 500 7.2 release strengthens that technology leadership position by providing two new .NET solutions, full support for Microsoft Vista UAC and a re-architected Sage MAS 500 Office while continuing to extend and improve the overall user experience.

A key highlight to the 7.2 release includes a new .NET and web based dashboard solution – Business Insights Dashboard. As a benefit to all Sage MAS 500 maintenance subscribers, Business Insights Dashboard provides a user centric view of key application metrics in addition to transaction inquiry through a Browser URL.

The new .NET and SQL Server SSIS based Data Import Manager allows administrators to import a variety of transactions into MAS 500 through a simplified mapping interface while preserving data integrity. A refreshed and enhanced user interface within Sage MAS 500 Office provides a more streamlined process for creating and managing Office Templates.

Both new and existing customers will immediately benefit from these newer technologies in addition to the usability, performance and scalability improvements throughout the system. Please take the time to read through the remainder of the document to fully understand the value and opportunity the 7.2 release provides.

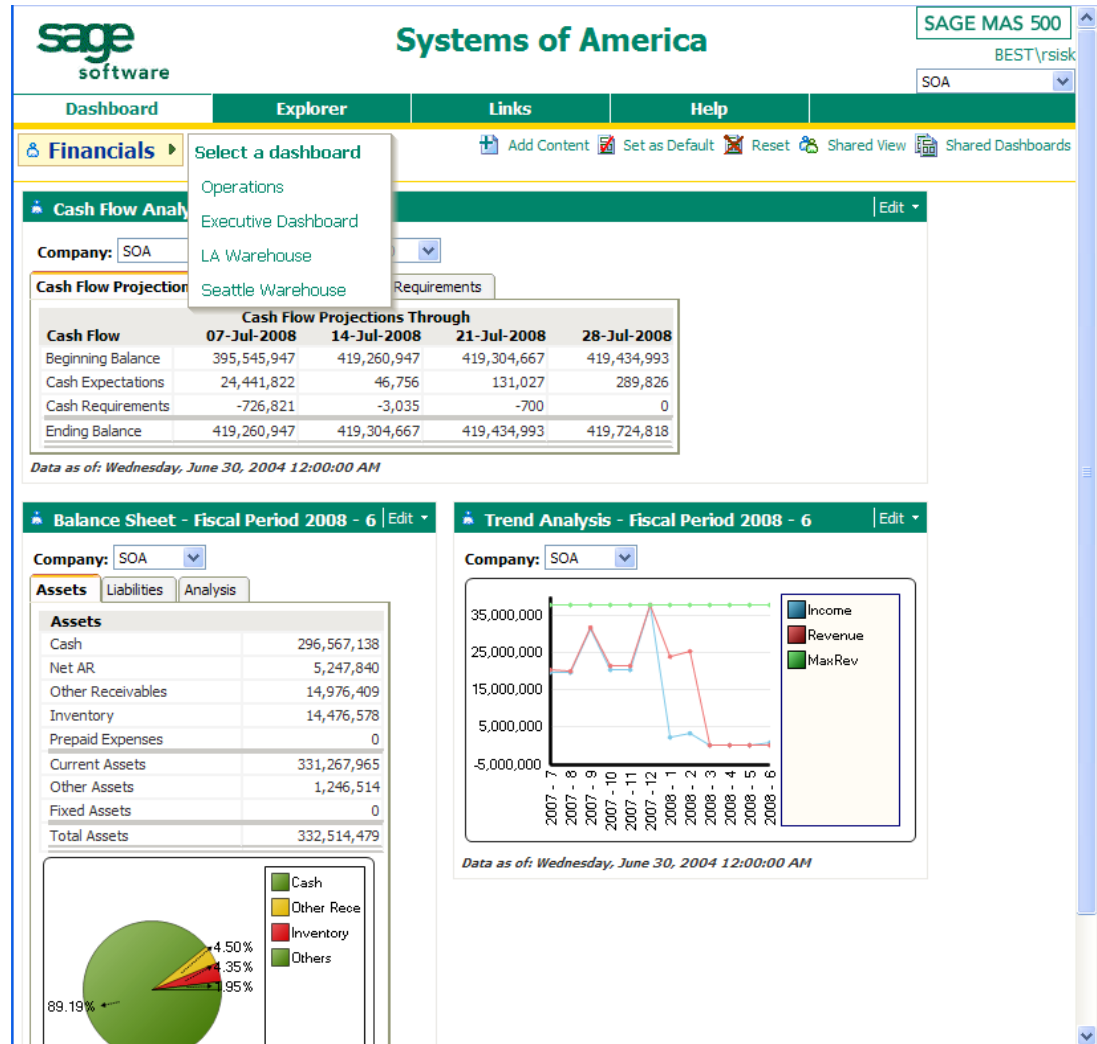
Availability

Sage MAS 500 7.2 will be generally available in March 2008. Channel partner and customer auto-shipments are expected in the April 2008 timeframe. The Software Development Kit (SDK) will be available approximately four weeks after the initial delivery to Production. All efforts will be made to provide the SDK sooner.

New Modules

Business Insights Dashboard

The new Business Insights Dashboard module keeps customers in charge of their business by channeling all the information they need into one convenient and powerful web dashboard solution. Business Insights Dashboard provides an unsurpassed level of knowledge management that consolidates critical personal, corporate, and external information and enables single-click access to analytical and collaborative tools. Using .NET technology, this customizable solution to information overload puts up-to-date sales statistics, key Sage MAS 500 data, industry news, and competitive intelligence at your fingertips.



In addition, new data views (Web Parts) can be easily created in Visual Studio.NET allowing customers to track almost any business scenario imaginable. By leveraging key performance indicators in their business, they can move from reactive to proactive—improving customer satisfaction as well. Each user has the ability to personalize their dashboard in addition to configuring various dashboard layouts for daily, weekly and other role based views.

Secured Content

The data view included with Business Insights Dashboard have been assigned individual task rights allowing administrators to set security for each KPI by company based on their appropriate role in the organization. The ability to modify the personal experience and to modify the global experience within the Dashboard is also securable through individual task rights.

Leverage the Power of Business Insights Explorer

As an added benefit to the powerful personalized dashboard capabilities, users of Business Insights Dashboard will also have access to Business Insights Explorer views directly from the browser. Based on their security profile defined within MAS 500, users will benefit from the powerful sorting, filtering, grouping and drill-down capabilities provided through the embedded grid without requiring a Sage MAS 500 client installation. This additional capability allows customers to grant Sage MAS 500 data access to other information workers within an organization at a fraction of the cost by purchasing additional Business Insights User licenses.

Salesperson	Customer	Credit Limit	Balance	Highest Bal	Cust Class	Cust Class Name
Alfred Tabasco	Fountain Valley Florists	0.00	12,753.38	294,806.9		
Alfred Tabasco	Dawson Computer Products	0.00	103,264.75	5,986,955.4		
Alfred Tabasco	Aldebaran, Inc.	10,000,000.00	80,989.35	14,316,137.94	South West Territory	1/1/2007
Alfred Tabasco	Compound Solutions	0.00	2,986,283.78	8,087,651.84	South West Territory	1/2/2007
Alfred Tabasco	Lowry Air Force Base	100,000.00	506,102.76	10,619,695.50	South West Territory	1/21/2007

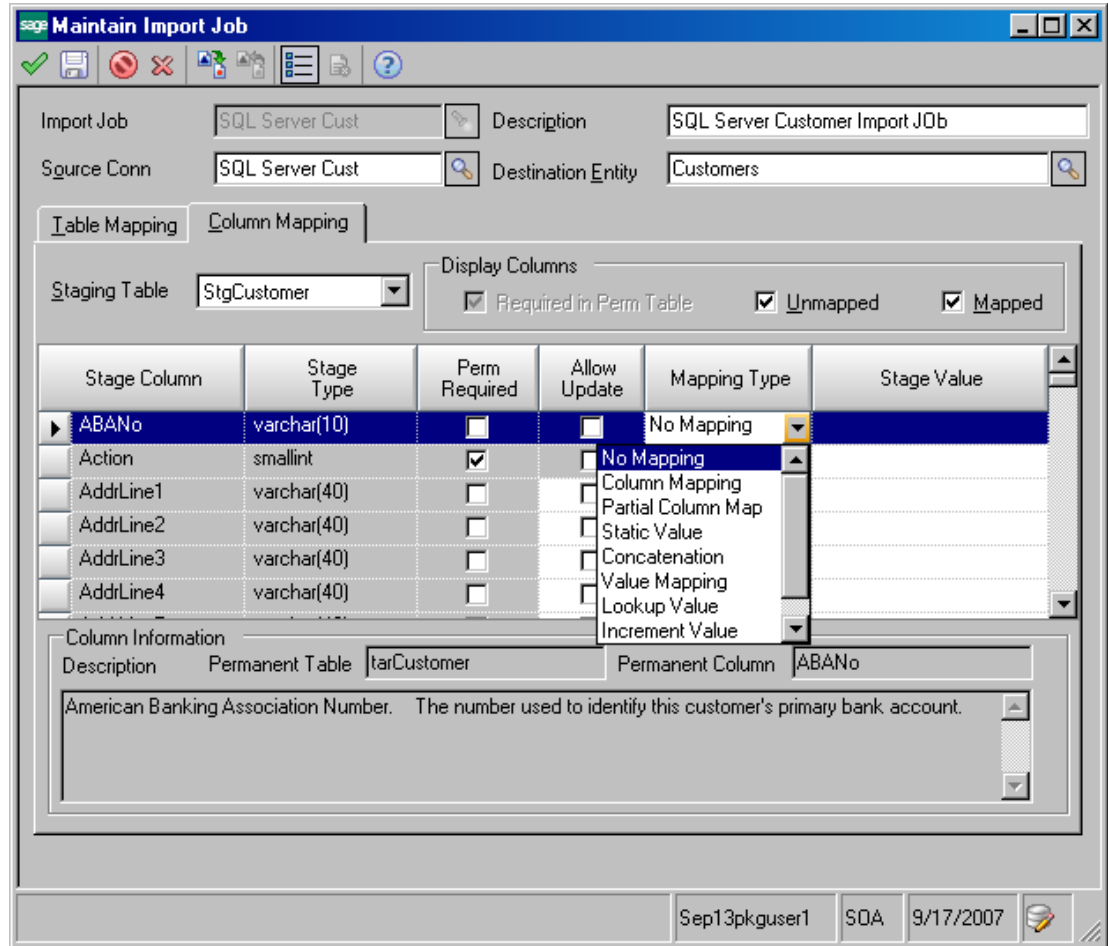
Data Import Manager

Sage MAS 500 continues its strong tradition as an open ERP platform for integration and customization. Based solely on the Microsoft technology platform, Database Administrators and developers have leveraged the various methods for integrating into Sage MAS 500 through its open SQL Server and Visual Basic platform.

The new Data Import Manager builds off the strength of that openness through a robust database integration mapping application. Built with .NET and SQL Server 2005 SSIS technology, database administrators can now configure one-time or regular scheduled imports into a wide variety of Sage MAS 500 transaction formats through a powerful mapping wizard. The mapping wizard provides the detailed knowledge of MAS 500 including required fields, default validations and lookups while enabling the administrator to transform direct feeds from Sage MAS 90 or 200, ASCII, Delimited, Microsoft Access, Excel, SQL Server and XML data sources. By leveraging the power of SQL

Server SSIS, administrators can schedule the SSIS package to run on a regular basis. Furthermore, developers can modify the final package by adding scripting for additional validations and other complex transformations.

Data Import Manager also addresses one of the most widely used applications in Sage MAS 90 and 200 platform - The Visual Integrator module. By providing the import capabilities within Data Import Manager, Sage MAS 90 and 200 customers that have been running regular imports with Visual Integrator can be assured of a similar experience after migrating to Sage MAS 500.



Available Transaction Imports

The following table highlights some of the key entities and transactions available with the 7.2 release of Data Import Manager. A complete list will be included with the online documentation supplied with the product

Module	Entity or Transaction	Capability
GL	Accounts	Insert
GL	Journals	Insert
GL	Transactions	Insert
AR	Customers	Insert and Update
AR	Sales Territories	Insert
AR	Sales Teams	Insert
AP	Vendors	Insert
AP	Vendor Items	Inset and Update

Module	Entity or Transaction	Capability
AP	Vouchers	Insert
IM	Pricing (including price sheets, groups, matrix and customer)	Insert
SO	Open Orders	Insert and Add Line
SO	History Orders	Insert
PO	Open Orders	Insert
PO	History Orders	Insert
MF	Work Centers	Insert
MF	Routings	Insert
MF	Employees	Insert

Licensing

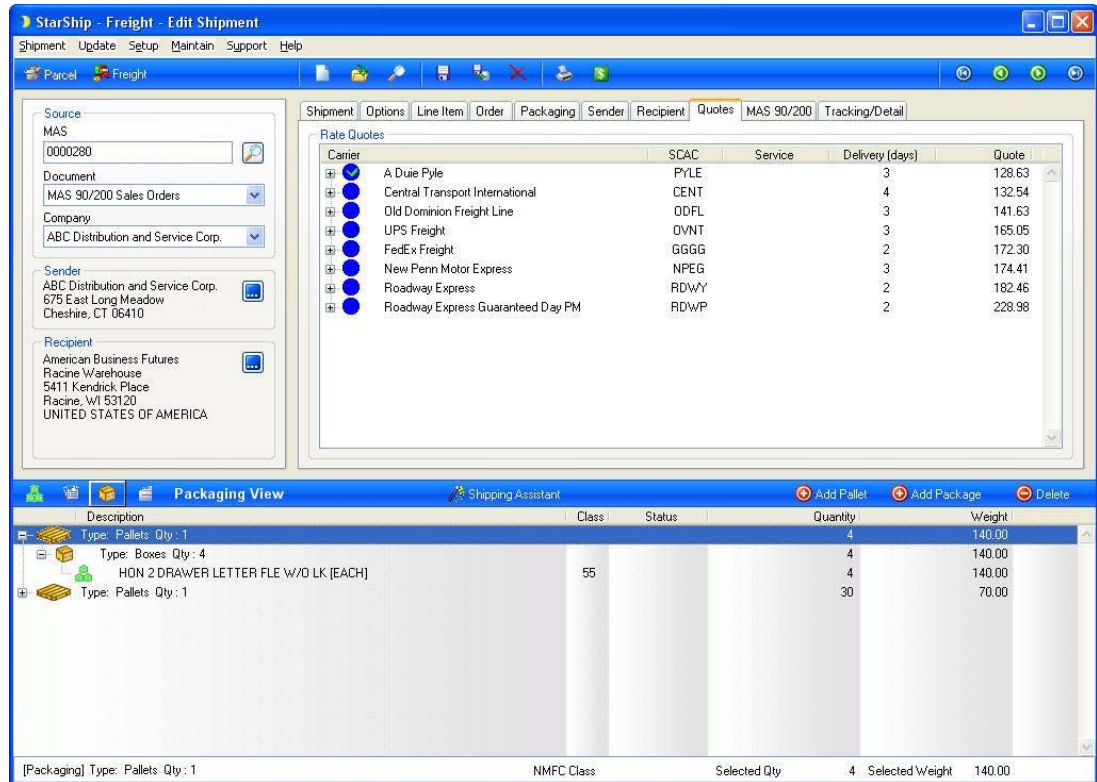
Data Import Manager will be licensed as a new module and priced at \$2,500. Pricing is subject to change prior to the release.

Starship Freight v9.9

Use StarShip Freight to integrate efficient packing and an automated process into your fulfillment of larger shipments. For less-than-truckload (LTL) and truckload (TL) shipments, StarShip Freight provides your customers with item level detail, prints the Bill of Lading (BOL), and recommends an auto-pack based on previous shipments with carriers such as Roadway and Yellow Freight.

Reduce shipping costs by shopping for the best rates using Freightquote.com carriers, customer negotiated rates, or a mixture of both. Quickly view the transit time and freight charges before selection and get tracking information on shipment location and status.

Use the StarShip Freight Shipping Assistant to simplify pick-and-pack functionality and improve efficiency. As shipments are processed, the Shipping Assistant remembers packaging scenarios, and provides those as auto-packing options in the future. A sophisticated two-tiered approach to packaging captures the item detail for each box, plus the box details for each pallet.



StarShip Freight Highlights

- Swiftly convert orders using item detail to automate freight rating and Bill of Lading
- Reduce shipping-related expenses by combining multiple orders in a single shipment
- Capture item, box, and pallet detail using a simple drag-and-drop method
- Identify significant shipping cost savings among multiple carriers by viewing side-by-side rate comparisons
- Immediately add accurate shipping charges to customer invoices
- Personalize the Shipping Assistant to your preferred level of detail
- Print pallet and package labels using laser or thermal printers

Availability

Starship Freight for Sage MAS 500 version 7.2 will be released after the initial launch of Sage MAS 500 version 7.2 and is currently scheduled for late spring after the completion of a beta release cycle.

Usability Enhancements

Warehouse Automation

Pick by Order or Shipment

A new flexible picking option within WA allows the operator to drive the picking process based on a sales order number or shipment number, thus allowing picking of urgent orders without completing entire pick list in addition to eliminating the need to return to the MAS 500 console as well as generate shipments before the picking process begins.

FIELD	ENTRY
ITEM	
LINE	
UOM	
BIN	
LOT	
QTY PICK/PICKED	
QTY AVAILABLE	
QTY	
SERIAL	

HEADER DETAIL
 ITEM

FIELD	ENTRY
ITEM	
LINE	
UOM	
BIN	
LOT	
QTY PICK/PICKED	
QTY AVAILABLE	
QTY	
SERIAL	

HEADER DETAIL
 ITEM

Email Notification

A new automated email feature provides instant feedback to the back office once specific transaction events are processed from the handheld. This new capability ensures that key personnel involved within shipment workflow are informed so that subsequent action can be taken. The following events will be included in the 7.2 release:

- Completion of a Pick List Pick
- Completion of a Sales Order Picking
- Completion of a Shipment Pick
- Posting of the Sales Order

Improved Error Messaging

Enhanced error messaging when processing rejected handheld transactions provides warehouse managers with complete visibility into the reasons a transaction failed thus allowing them to take proper action without additional inquiry.

Improved Warehouse Workflow Options

A set of new options will allow warehouse managers to require handheld personnel to scan items and enter the customer number when picking or packing an order. This process will ensure a more accurate picture of the customer's inventory situation prior to processing new orders.

Project Accounting

New Expense Billing Option for T&E and FP+ Projects

A new billing option from Accounts Payable will provide project managers with the ability to bill outside service expenses and other non resource related expense by the items standard cost, standard price or actual cost thus giving customers added flexibility when invoicing their clients based on the type of expense being incurred. This new billing option for accounts payable expenses is enabled for Time and Material projects as well as any T&M portion of a Fixed Price plus project.

Enhanced Drill-Down from General Ledger

Accounting personnel and other finance operations evaluating revenues and expenses associated with various activities across the business will now have the ability to view any project related transaction associated with the GL transaction such as timesheets, expense claims and project transactions. This new visibility provides the finance department the precise information they require when they are reviewing trends or anomalies within the business.

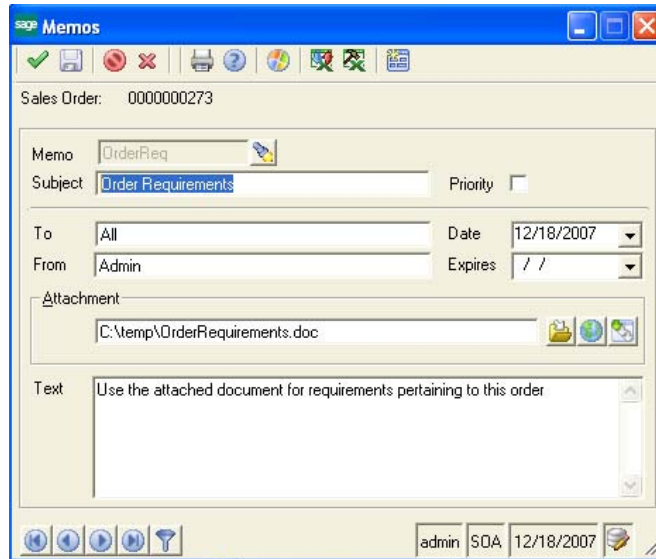
Sage MAS 500 Office Update

From the initial release in 1996, Sage MAS 500 has consistently been lauded as a leader in providing a robust integration with desktop productivity tools including Microsoft Office. Sage MAS 500 Office is one of many entry points provided within Sage MAS 500 that allows users to publish entity and transaction information directly with Microsoft Word and Excel. In addition, a strong attachment capability provided a method for assigning customer and supplier correspondence, internal instructions and other various documents associated with the given task.

Sage MAS 500 version 7.2 includes a significant update within Sage MAS 500 office by providing a richer user experience when developing Office templates, as well as re-aligning the document attachment capability within a much improved memo management facility. New and existing users will benefit immediately from the ease of use features. Moreover, a dedicated tutorial included with the 7.2 release will highlight the key capabilities included with memo management and creating office templates.

Memo Management Enhancements

The Memo management option currently available in a small subset of tasks, such as customer and vendor maintenance, has been added to all tasks that previously contained the Sage MAS 500 Office toolbar option. Each memo created will be automatically assigned to the given task such as the voucher, customer or invoice. A new attachment feature within the memo manager window will allow users to attach documents within a predefined network share or local drive. The memo manager icon on the toolbar will automatically change in appearance if a memo has been assigned making it easier for the user to identify.

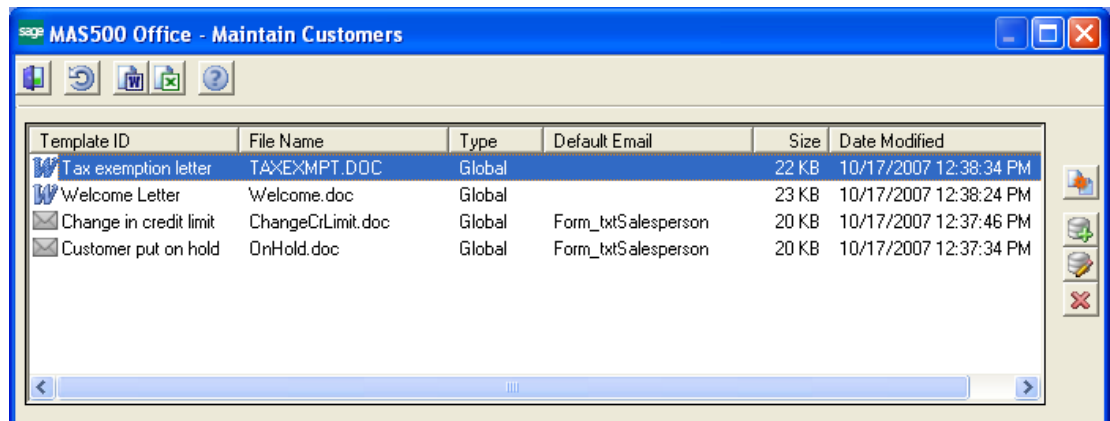


Business insights Explorer has been enhanced to include a new “Active Memos’ Preview for the most common memos a user may need inquiry access to including Vouchers, Invoices, Work Orders, Projects, Purchase Orders, and Sales Orders.

Office Templates

The Sage MAS 500 Office template creation and merge functionality has been completely redesigned to leverage the powerful embedded features within Microsoft Office, while making it easier for the user to understand the information contained with the Sage MAS 500 task. Users will now drive the creation of the template from within Word instead of outside the application by leveraging the built-in Word mail-merge wizard. Additionally, Sage MAS 500 Office has been implemented as a generic feature and will be available in all data entry tasks.

When developing a new Word template, Sage MAS 500 office will provide the relevant information contained within the Sage MAS 500 task and drop the user directly within the Word Merge wizard. Users can then simply drag and drop fields within the document and generate the final document. The template can then be saved for repetitive use in a predefined network share or local drive. For Excel, the data will be exported directly to a blank source worksheet with defined named ranges. Pivot tables and charts can then be constructed and saved as templates for continued use and shared with others within the organization.

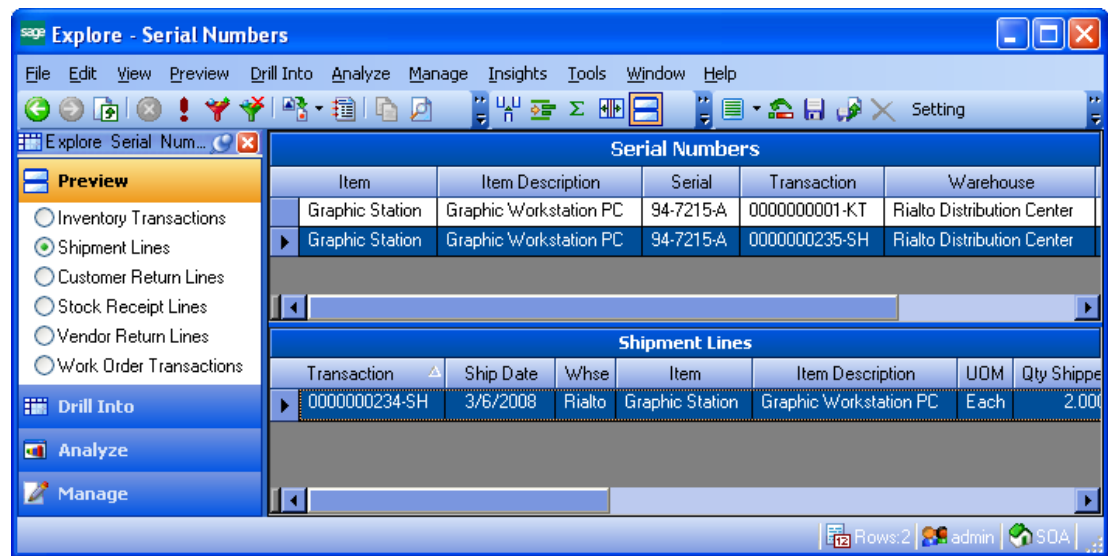


Business Insights Explorer

Introduced in Version 7.0, Business insights Explorer (BIE) has become the tool of choice for customers to inquire and navigate through the wealth of relational information stored within Sage MAS 500. BIE's ability to personalize and share information with others has become a common theme mentioned among the Sage MAS 500 user community. The introduction of Quick Previews in version 7.05 provided a simplified and high performing view of the information while leveraging the backend infrastructure and personalization capabilities of BIE.

A set of new previews will be introduced in the 7.2 release including:

- New "Where Serial Number Used" previews including: Inventory Transactions, Shipment Lines, Customer Return Lines, Stock Receipt Lines, Vendor Return Lines, and Work Order Transactions. These new previews will allow customers to immediately identify where a given item serial number has been used within their business operations.



- New Active Memos previews for Vouchers, Invoices, Work Orders, Projects, Purchase Orders, and Sales Orders. These previews will be accessible from the aligned transaction BIE view.

New Common End User License Agreement

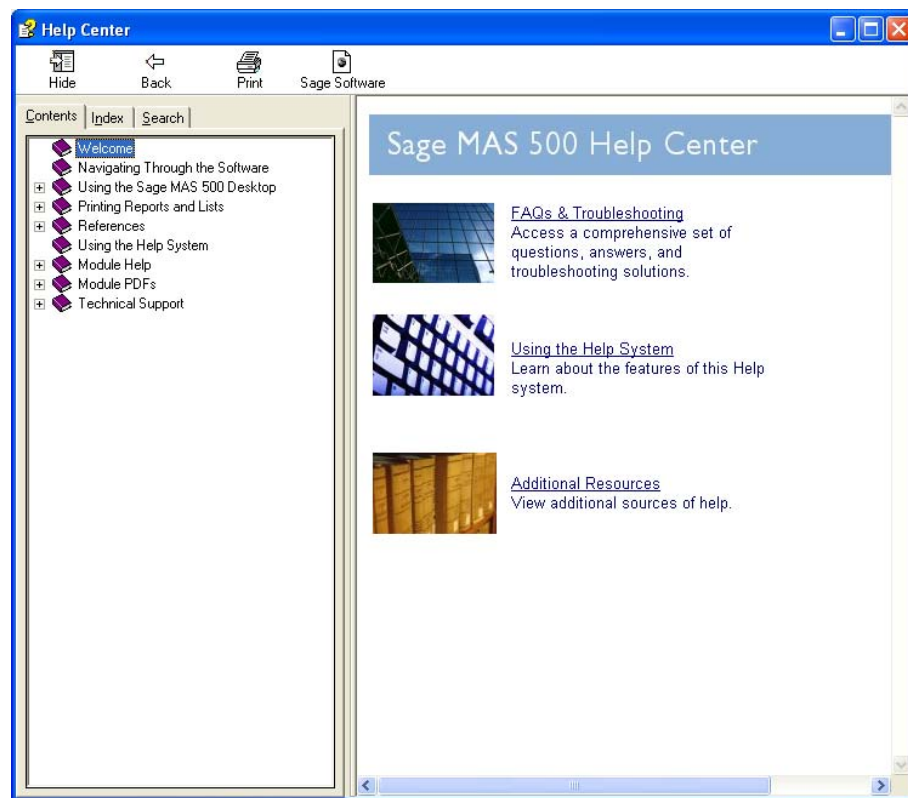
A new common End User License Agreement (EULA) has been structured for all Sage North American products including all ERP, CRM, HRMS and Fixed Assets solutions. This common EULA provides customers with consistent licensing guidance based on complete solution they choose to purchase from Sage. The new EULA is included with the 7.2 release and is accessible from the help system.

Documentation

The Sage MAS 500 version 7.2 documentation and embedded help system includes a wide variety of new technologies including HTML help and multi-media tutorials. These new technologies provide the training and searching capabilities that ultimately enable users to feel more empowered in how to best leverage the entire system on a daily basis.

New HTML Help Center

The new HTML Help Center is a one-stop resource of information for the Sage MAS 500 software.

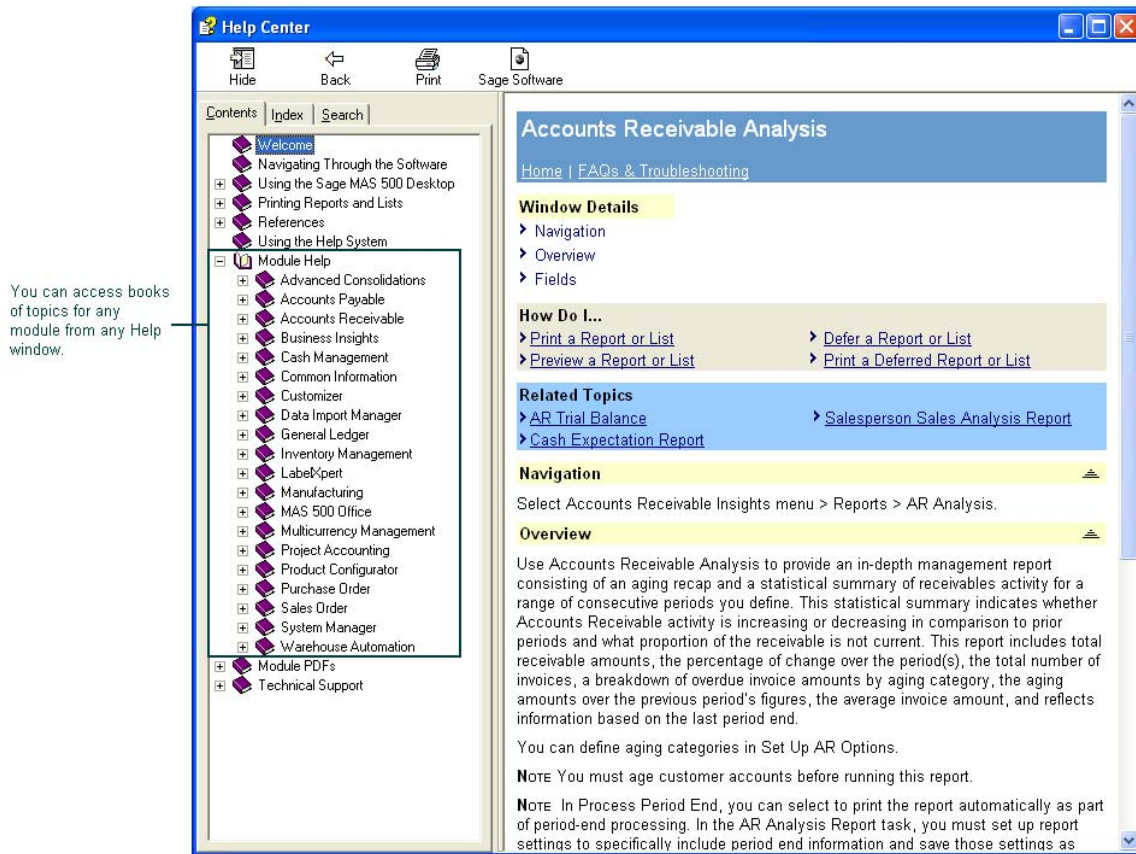


Searching Across Help Systems

The new HTML Help Center is more streamlined and presents one main window from which to search across all topics in all modules. Additionally, the index and table of contents are shared across all modules.

Shared Table of Contents

The table of contents (Contents tab) in the new unified Help Center allows you to access books of topics for any module, general information about using the Sage MAS 500 Desktop, reference guides available in PDF, overview module PDFs, and technical support.



The table of contents contains links to reference guides and overview PDFs. Module PDFs provide overview information for the main windows in the software.

Shared Index

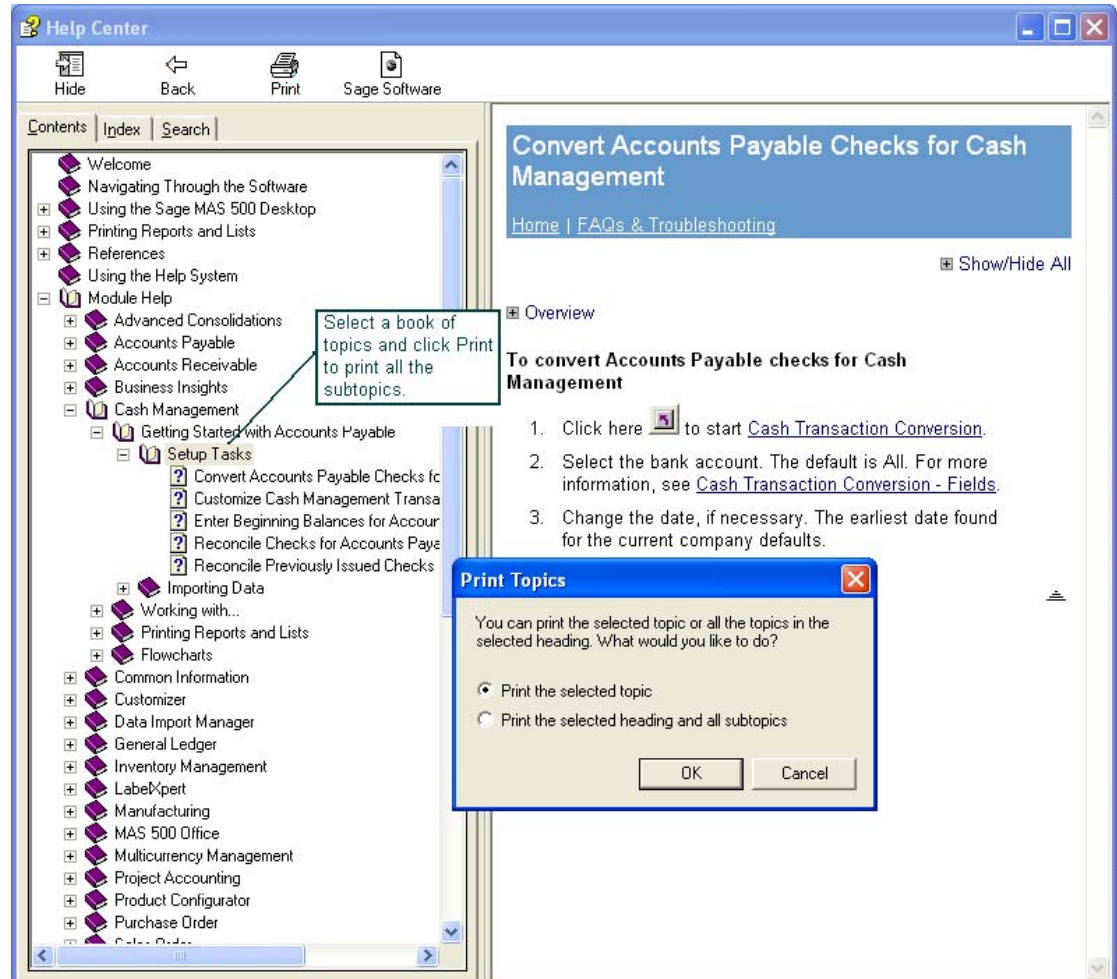
The unified Help Center also allows you to look for topics across all modules based on commonly-used keywords making it easier than ever to locate information.

Shared Search

You can perform full-text searches across all the module Help systems from any Help window.

Printing Topics

Although you can print individual Help topics within the Help system, you can also easily print a book of related Help topics. On the Help Center table of contents area, select the book of topics you want to print and click Print in the toolbar. You can also right-click a book and select Print. The Print Topics dialog box appears giving you the option to Print the selected topic in the display area or print the selected topic and all subtopics.



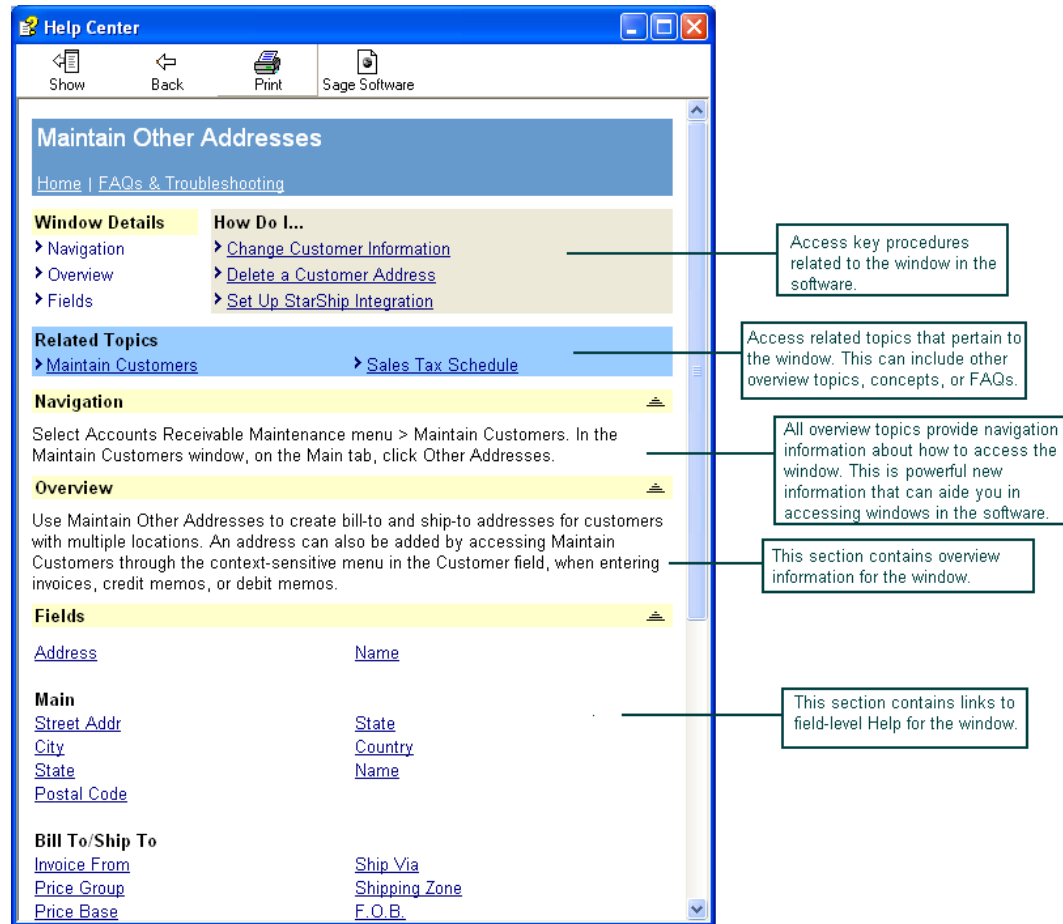
Now, it is easier to print field-level Help from the software. All fields are accessible from one easy-to-print page. When you press F1 at any field in the Sage MAS 500 software, the field-level Help topic for that window appears and jumps you right to the field you are looking for. Rather than printing individual fields from popups, you can now print all the field-level information for a window with one click of a button.

FAQs and Troubleshooting Topic

All Help topics contain links to the Help Center home page and the FAQs & Troubleshooting page.

Overview Help Topic

The new and improved overview Help window offers key navigation links that are easily accessible near the top of the Help topic. You can use these navigation links to access procedure, concept, and field-level information that pertains to that window.





Field-Level Help Topic

The new structure for the field-level Help topics allows you to view and print information for all the fields in a window from one topic. Some field-level Help topics contain example drop-downs and links to other topics, where applicable.

New Tutorials

A new set of embedded tutorials provide users with the overviews of the key usability characteristics of Sage MAS 500 including Desktop Navigation, Memo creation, running reports, using lookups and accessing the powerful context menu's throughout the system. These quick multi-media tutorials will enable users to feel more comfortable navigating throughout MAS 500 while understanding some of the key product strengths.

The following illustration highlights the initial set of tutorials that will be included with the 7.2 release:

Tutorials

Use the library of tutorials on this page to learn more about features available in Sage MAS 500. For optimal workstation performance, close all tasks before beginning a tutorial. Before you begin, consider viewing [How to Use a Tutorial](#) to become familiar with navigating within a tutorial.

Library of tutorials available in Sage MAS 500

Click a link below to go to a specific library of tutorials.

- [An Introduction to Sage MAS 500](#)
- [Business Insights Dashboard](#)

This tutorial provides an introduction to the foundation of Sage MAS 500, teaching basic concepts and features of the software. Learn about the Business Insights Dashboard as well as how to add and modify content, create a shared Dashboard, and view Business Insights Explorer data within a Dashboard.

An Introduction to Sage MAS 500

	Length
Click a link below to launch the tutorial.	
Navigating the Desktop	4:32
Customizing the Desktop	5:00
Entering Data	6:32
Working with Memos	3:35
Learning About Lookups	2:65
Viewing Inquiry Data	5:02
Working with MAS 500 Office	7:55
Printing Reports and Lists	4:36
Discovering Additional Resources	1:50

Business Insights Dashboard

Click a link below to launch the tutorial.

Introduction to Business Insights Dashboard	4:56
Adding Content to a Dashboard	3:12
Editing Content on a Dashboard	2:53
Creating a Shared Dashboard	2:43
Viewing Data in Explorer	4:13

Sage Software Complete Solutions

Sage SalesLogix 7.2

Your customers will be thrilled to hear that Sage SalesLogix for Sage MAS 500 has a new integration that will change the way they do business. Sage SalesLogix for Sage MAS 500 has been redesigned to improve communication, customer loyalty, productivity, and decision making by providing timely, accurate information.

Sage MAS 500 Version 7.2 will be certified within a short period of time after the initial Sage MAS 500 7.05 release currently scheduled for March. Additional details will be provided at that time. Sage MAS 500 Partners will be required to have current certification on both Sage SalesLogix and Sage MAS 500 to sell and implement this integration. Here are some of the key highlights:

- Instantly create accounts in Sage MAS 500 through Sage SalesLogix without entering a sales order
- Tailor bi-directional synchronization to meet your business needs, scheduled or on-demand
- Enhance validation checking to eliminate duplication
- View inventory in multiple warehouse locations (Sites)
- Customize Ad-Hoc Queries for powerful and drill-down capability and custom reporting
- Expand the visibility of instant, accurate account detail from Sage MAS 500 from Sage SalesLogix

For complete details on this exciting new release, please refer to the Sage SalesLogix for Sage MAS pre-release guide posted on the Sage MAS Partner File Center.

Sage Abra HRMS v7.6

This release focuses on enhancements to Abra eRecruiter, Abra Benefits Enrollment, Abra HR, Abra Payroll, Abra Attendance, Abra Link, Abra MAS 90 Link and Abra OrgPlus. System level changes include:

- The ability to create and accept complex passwords up to 10 characters in length which support uppercase and lowercase characters, alpha, numeric and some special characters.
- Updated Upsizing Wizard. Supports the ability to move data from Abra v7.5.
- Microsoft Windows Vista compatibility. Sage Abra Suite 7.6 is compatible with Microsoft Windows Vista. Earlier versions of Sage Abra are not anticipated to be compatible with Vista and are not supported as such.

- Two user license of Crystal Reports v10. Additional licenses may be purchased for \$155 for 1 seat and \$765 for 5 seats, plus associated support fees.

Abra eRecruiter v7.6

Resume Keyword Search

In addition to structured searches, Abra eRecruiter now provides unstructured resume keyword search capabilities. Search resumes by groups of key words and view the occurrence of the key words within resumes. Identify a specific word or grouping of words found in the resume field and perform a search. eRecruiter also provides a listing of the key words (or groups) found for each applicant.

SSN/SIN Masking

Abra eRecruiter now masks Social Security Numbers and Social Insurance Numbers from the view of those not set up as Recruiters.

Archived Profile Access

With Abra eRecruiter, applicants who are been previously archived can now log into the system using their email address and the system will proactively re-activate their profile. If an applicant logs on to the system with an existing e-mail address after their applicant record has been archived, the applicant profile and applications will be activated automatically. The Applicant History will be updated to show that the Applicant was activated by the system.

Improved Workflow

Abra eRecruiter now supports improved workflow between hiring managers and recruiters. Hiring managers can now receive multiple applications and resumes from recruiters and search for applicants "by requisition". They can also send applicant selections and rejections to the recruiter through the Abra eRecruiter message center.

Email Template Communications

With Abra eRecruiter, utilize email templates to generate emails to multiple applicants. In the past, communications to one or more applicants was limited to the generation of letters. eRecruiter has now been expanded to include email. Create email templates and send system-generated emails for the purpose of:

- An acknowledgement letter to the applicant
- Invitations to candidates for interviews at specific times and locations
- An offer letter to selected candidate
- Rejection letters to selected applicants
- A history of all emails sent will be saved with the date, time and recruiter name and updated to the applicant's record.

Employee Transfers/Promotions

Now with Abra eRecruiter, when an existing employee accepts a transfer offer or is promoted, the Abra HR system will recognize that an existing employee is either being transferred or promoted. That employee data will be made available in Sage Abra HR for a transfer or a promotion.

Abra Benefits Enrollment

Abra Benefits Enrollment provides online benefit administration, open enrollment, and life events management for Abra HR users. Empower employees with detailed 24/7 benefit administration access to benefit plans over the Internet or an intranet. Step-by-step wizards guide administrators through the benefit plan set-up process, and walk employees through open enrollment. Year-round life events management allows employees to update information such as marital status and dependents.

Export in .csv Format

Administrators can now export Open Enrollment data from AWC-BE in .csv format for easy conversion to Excel format.

Abra HR- EEO-1 Reporting Changes

Abra HR has been updated to collect and report on job categories and employee ethnicity as needed to support the 2007 EEOC category changes. Abra HR provides the code table and report changes necessary to support the new EEO-1 categories on which employers must report effective September 30, 2007. Category changes include the following:

- Addition of a new category titled "Two or more races, not Hispanic or Latino".
- Separate categories for "Asians, not Hispanic or Latino" and "Native Hawaiian or Other Pacific Islander, Not Hispanic or Latino".
- Rename the category "Black" as "Black or African American".
- Rename the category "Hispanic" as "Hispanic or Latino".
- Divide the job category of "Officials and Managers" into two subcategories of "Executive/Senior Level officials and Managers" and "First/Mid-Level Officials and Managers".

Abra Payroll Updates

In compliance with California Labor code 226, Abra Payroll now has the ability to display the pay rate on paychecks or advices with the rate of pay times the pay factor e.g. 1.5, 2, etc.

Now you can manage gross wages, by state, for multiple states. Calculate gross earnings by state for instances in which employees work in multiple states in a given year.

Additionally, Abra Payroll now supports the ability to void a check on a user-defined date during an open quarter.

Abra Attendance - Track FMLA Absences on 12-month Rolling Basis

Abra Attendance now has the ability to track FMLA absences on a 12-month rolling basis. Abra Attendance supports the ability to track the number of workweeks of unpaid leave under the FMLA during any 12-month period of time. Abra Attendance calculates FMLA leave using a 12-month

rolling period in addition to calculating for Fiscal, Annual and Anniversary plan types which accrue forward.

The FMLA 12-month rolling period determines an employee's balance of FMLA leave by measuring backward 12 months from the date an employee takes FMLA leave. As the calendar moves forward, the 12-month period moves forward day by day, hence the term "rolling".

Abra OrgPlus

Automatic Email Distribution

Define email distribution groups and Abra OrgPlus will automatically send your up-to-date organization charts to a designated list of recipients on a scheduled basis or at the push of a button. Define different distribution lists per organization chart file and keep everyone up to date on the latest organization structure additions, changes and open positions.

Insert Comments

Annotate your organization charts with comments. Just like in Microsoft Word, use the Abra OrgPlus "Insert comment" command and add notes that relate to a box, branch or your entire chart. Share your charts with comments freely using OrgPlus Reader.

Enhanced HTML Publishing

Abra OrgPlus HTML publishing has been significantly improved. Now with more sophisticated toolbars and panels, sharing your organization charts on the web is easier than ever. HTML publishing now includes a search function and better than ever printing quality. And, for chart sharing and editing, you can now download an .opx (OrgPlus) file directly from an HTML page.

Enhanced Chart Printing

Abra OrgPlus chart printing is better than ever! You now have more control over how master page elements are scaled when printing charts. Make logos and titles the perfect size no matter how much your chart is scaled up or down to fit on a page.

Tree Panel Reorganization

Using the new tree panel controls in Abra OrgPlus is the fastest and easiest way to change your organizational structure or edit chart data. Quickly add, delete and edit records without navigating a cumbersome organization chart. Promote and demote records with ease. The combination of a holistic view of your organization and simple drag-and-drop controls in the tree view make OrgPlus ideal for cross departmental reorganization or any sort of mass change, including mergers or acquisitions.

Template and Sample Chart Business Package

In addition to many great looking sample charts and templates included in previous versions, Abra OrgPlus is now loaded with ready-to-use charts including key business and HR metrics. Use any one of the many useful management reports included in OrgPlus to turn your HR data into workforce intelligence. Sample charts include: financial summary, headcount report by department, succession plan, gender ratio, span of control and many more.

More Powerful Profile Views

Abra OrgPlus profile views support field editing and chart navigation – use the profile views to easily change positions in the chart and update the chart information. Conditional formatting in profile views allow you to dynamically format your data to bring attention to certain employee information. For example, automatically highlight information in the employee's to identify top performers. Combine multiple profile views into a single, composite profile view and define rules to hide and show individual profile views based on the selected box (Manager, Director or Individual Contributor) for a more complete view of your organizational data.

Merge Charts

Abra OrgPlus has long been the preferred tool for planning a company reorganization. In OrgPlus, we have made this process even easier. With the new merge charts feature, OrgPlus will automatically merge together two organizational plans into a single chart marking the records that have been changed and the author responsible for making the change. With OrgPlus, company reorganizations that normally took days can be done in just minutes.

Improved Duplicate Reporting Management

Having the ability to visualize multiple reporting relationships is critically important when looking at your true organizational structure. Abra OrgPlus will automatically detect alternate managers and include them as a list in the box of an employee with multiple managers. Also, navigate directly to a specific occurrence of an employee that appears multiple times in a chart.

Sage FAS 500 v2008.1

The award winning Sage FAS 500 fixed asset management solution for 2008 includes a robust set of new features and enhancements including additional tax guidance, government compliance and platform updates.

- Tax Law Updates: Sage FAS 500 now supports the following tax law updates to conform to government requirements.
 - Updated Tax Forms: IRS Form 4562 – Depreciation and Amortization for 2007.
 - Updated Tax Limits: Complies with the scheduled increase in the Section 179 limits and luxury auto limits.
 - Extension for Section 179D Property
 - New Section 179E Deduction for Advanced Mine Safety Equipment
 - Extension of 168(k) Allowance for GO Zone Property
 - New 168(k) Allowance for Cellulosic Biomass Ethanol Plant Property
- Two New Property Tax Reports to assist in filing property tax returns.
- Update to Audit Advisor to improve validation for assets with less than 100% business use.
- New Windows NT Authentication support in Sage FAS 2008 provides a synchronized approach to configuring user accounts and permissions while establishing a more robust security infrastructure. Sage FAS users will benefit from a single login through their suite of Sage solutions including Sage MAS 500.

- Windows Vista compatibility including installation and UAC support.

Sage Timesheet v9.61

Sage Timesheet v9.61 for remote Time and Expense entry and project management provides an integrated MAS 500 solution for professional service organizations that need to track and bill projects based on a fixed or time and material basis. A new 9.7 version of Sage Timesheet is currently in beta and is tracking towards a March release timeframe. Additional details will be made available at a later date.

Third Party Considerations

Crystal Reports v10.0

Crystal Reports provides access to your data and allows you to format it, and deliver it as information inside and outside your organization. There will be no changes to Crystal Reports with this release.

Microsoft FRx v6.7 SP 10

FRx is a financial reporting application that gives midsize organizations and corporate businesses control of their entire financial reporting process across one or more legal entities. FRx version 6.7 service pack 10 will be included with the 7.2 release.

StarShip Parcel v9.9

StarShip Parcel integrates tightly with Sage MAS 500 and makes the entire shipment management process more fluid. Plus, when combined with the pick, pack, and ship feature built into the Sales Order module, StarShip Parcel helps your company become a more competitive distributor and even offers features that can potentially reduce your shipping and shipping-related expenses. Please refer to Starship Freight section above for additional details.

Technology Features

Data Migration

Data Migrator version 7.2 will continue to support Sage MAS 90 and 200 v4.05 migrations along with previously supported releases including v3.71.

Microsoft Vista UAC Support

Sage MAS 500 has a long standing commitment to leveraging the latest Microsoft platform requirements. With the introduction of Microsoft Vista, a new security standard was established to provide administrators additional security controls they require from their network of computers throughout and organization. The new UAC standards in particular placed a greater burden on software manufacturers to conform to this stricter security standard. The 7.2 release provides full support for the UAC including the key areas of client installation, Windows NT Integrated security, registry usage and proper local disk access.

Platform Support Overview

The following are general platform support guidelines for this release. Please refer to the Current Compatibility and Resource Guide on Sage Software Online for detailed compatibility requirements.

Microsoft SQL Server 2000 and 2005: Full SQL Server 2000 (version 8.0) and 2005 (version 9.0) support for Sage MAS 500 databases. SQL Server 2005 includes key enhancements to enterprise data management in the following areas: manageability, availability, scalability, and security. For complete details about the updates and changes available in SQL Server 2005 please visit <http://www.microsoft.com/sql/prodinfo/overview/whats-new-in-sqlserver2005.msp>.

Accounting Server OS: Microsoft Windows 2000 Server and Windows 2003 Server

Microsoft Visual Studio 2005: Sage MAS 500 utilizes the new .NET Framework 2.0 development toolset. Application benefits include increased performance and throughput in the Desktop, Business Insights Explorer, and Business Insights Analyzer areas.

Thin-Client Configurations: Terminal Services on Microsoft Windows 2000 Server, Windows 2003 Server, and Citrix Metaframe

Accounting Client OS: Microsoft Windows 2000 Professional, Windows XP, and Windows Vista

Web Server OS: Microsoft Windows 2000 Server and Windows 2003 Server and IIS 6.0

Browser: Microsoft Internet Explorer 6.0 and 7.0 on a Windows 32-bit platform

Microsoft Office: Office XP, Office 2003 and Office 2007 including Microsoft Project 2002, Project 2003 and Project 2007

Minimum System Requirements

Server for Standard or Advanced Editions
Dual Intel Pentium III, 450 MHz or better, 512 MB RAM, 1 GB free disk space

Server for Small Business Edition
Single Intel Pentium III, 450 MHz or better, 512 MB RAM, 1 GB free disk space

Client
Pentium III processor with 512 MB RAM

Retirements

eExecutive

With the introduction of Business Insights Dashboard to the 7.2 release, eExecutive will be retired and automatically removed during the upgrade installation procedure. All existing and new customers will receive Business Insights Dashboard at no additional charge.



SAGE MAS 500

56 Technology Drive
Irvine, CA 92618-2301
800-854-3415

<http://www.sagemas.com/>

The information contained in this document represents the current view of Sage Software, Inc. on the issues discussed as of the date this document was prepared. Sage Software cannot guarantee the accuracy of any information presented after the date of publication. The capabilities, system requirements and/or compatibility with third-party products described herein are subject to change without notice. Contact Sage Software for the most current information. Always consult a network specialist to discuss the security risks involved before implementing any Internet solution. Sage Software is not responsible for the content or maintenance of third-party Web sites referred to herein. This document is for informational purposes only and may not be distributed to third parties. SAGE SOFTWARE MAKES NO WARRANTIES, EXPRESSED OR IMPLIED, IN THIS DOCUMENT.

© 2007 Sage Software, Inc. All rights reserved. Reproduction in whole or in part without permission is prohibited. Sage Software and the Sage Software product and service names mentioned herein are registered trademarks or trademarks of Sage Software, Inc. and/or its affiliated entities. All other trademarks are the property of their respective owners.

© 2007 Sage Software, Inc. All rights reserved

Free Manuals Download Website

<http://myh66.com>

<http://usermanuals.us>

<http://www.somanuals.com>

<http://www.4manuals.cc>

<http://www.manual-lib.com>

<http://www.404manual.com>

<http://www.luxmanual.com>

<http://aubethermostatmanual.com>

Golf course search by state

<http://golfingnear.com>

Email search by domain

<http://emailbydomain.com>

Auto manuals search

<http://auto.somanuals.com>

TV manuals search

<http://tv.somanuals.com>