

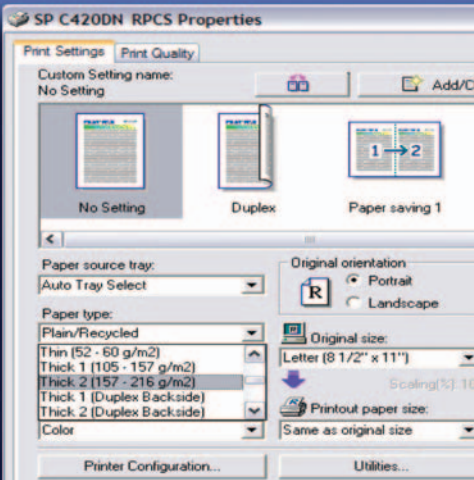
Ricoh Aficio SP C420DN  
Color Laser Printer  
Upgrade to Unstoppable.

**RICOH**

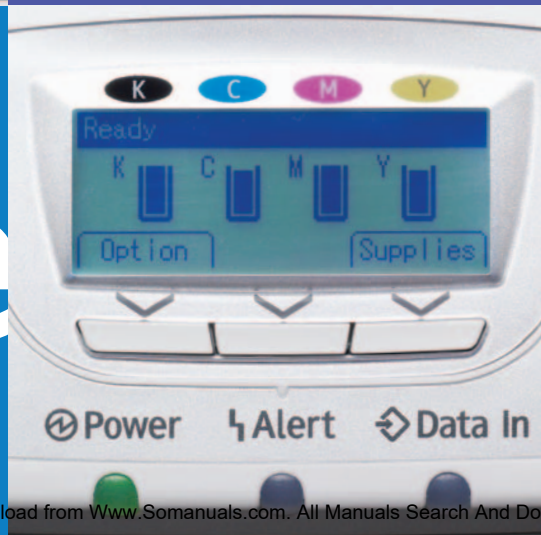
proven



reliable



value



# Ricoh Aficio SP C420DN Color Laser Printer

## Unmatched Quality and Cost Efficiency.

Built with a proven, award-winning color print engine, the RICOH® Aficio® SP C420DN Color Laser Printer delivers the amazing quality and reliability you expect — plus the technology you need to maximize productivity. That means higher paper capacity, dynamic paper handling and a powerful print controller. Plus, the highly affordable Ricoh Aficio SP C420DN still offers the lowest cost per page in its class.



# Superior Robust Connected Productive

## Increased Power and Performance

**Equipped with an advanced print controller, the Ricoh Aficio SP C420DN delivers an immediate improvement in color print productivity.**

- Finish every color job faster. The Ricoh Aficio SP C420DN prints 31 pages per minute in color and black & white, with image quality up to 1200 x 1200 dpi. Standard duplexing runs at nearly the same speed as simplex.
- Process complex documents more efficiently with the 800 MHz controller and standard 256 MB memory (512 MB maximum).
- Store frequently used files on the optional 60 GB hard drive for on-demand reprinting.
- Print photos immediately without a PC\*. Just plug in any PictBridge™-enabled digital camera.
- Support a variety of workflows with standard interfaces for Ethernet, USB 2.0 and USB Host Interface. Options include IEEE 1284, IEEE 802.11a/g, Bluetooth and Gigabit Ethernet.
- Add functionality in Microsoft Vista with the standard XPS Driver (available via Web download).



You can print photos immediately without a PC by simply plugging any PictBridge™-enabled digital camera directly into the Ricoh Aficio SP C420DN\*.

## Versatile Paper Handling

**Expand the boundaries of color document creation with advanced paper-handling capabilities.**

- Print large, full-color documents with support for paper sizes up to 8.5" x 14" through the standard 550-Sheet Paper Tray and 100-Sheet Bypass Tray. You can also print banners up to 8.5" x 35" through the Bypass Tray.
- Minimize reloading with up to three optional 550-Sheet Paper Feed Units, bringing total paper capacity to 2,300 sheets.
- Quickly print documents that require thick or unique paper. All trays accept paper weights up to 120 lb. Index and accommodate specialty stocks. A short, soft-curve paper path reduces the risk of misfeeds.
- Add color graphics to envelopes with reliable envelope feeding from all trays.
- Select the correct paper stock in seconds. Simplified print driver settings show the actual weight (in g/m<sup>2</sup>) of the paper in each drawer.



With one standard and three optional 550-Sheet Paper Feed Units, the Ricoh Aficio SP C420DN can hold up to 2,300 sheets.

## Exceptional Ease of Use

**The user-friendly Ricoh Aficio SP C420DN is designed for simple, convenient color printing.**

- Access menu options quickly with the streamlined control panel with 4-line LED, which also shows supply levels at a glance.
- Decrease maintenance with high-yield consumables that are easy to replace.
- Enjoy easy management. Administrators can receive e-mail alerts and use Web Image Monitor to check network settings, usage details and supply status remotely.
- Avoid wasted paper with a suspend/resume button that instantly stops printing without resetting the job.
- Control printer access and protect sensitive data with multiple security features, including print data encryption, user authentication and data overwrite.

## High Reliability, Low TCO

**Expect reliable performance from a solid color laser printer that is built to last.**

- Handles higher print volumes than most competitors in its class.
- Produce eye-catching color quickly, for an extremely low total cost of ownership (TCO) driven by long-lasting, affordable supplies.

## Your Environmental Partner



**Ricoh continues its long-standing commitment to developing office solutions with environmentally friendly and superior energy- and supply-saving features, without compromising productivity, including:**

- Power-Saving Sleep Mode
- Duplex Mode
- Low Noise Levels
- Minimal Ozone Emissions
- Restriction of Hazardous Substances (RoHS) Compliant



# Ricoh Aficio SP C420DN

## System Specifications

Aficio®

### Engine Specifications

<b>Configuration</b>	Desktop
<b>Technology</b>	Laser-beam scanning, Electro-photographic, Dual component toner, 4 tandem drum method
<b>Resolution</b>	600 x 600 dpi (default); 1200 x 600 dpi; 1200 x 1200 dpi
<b>Printing Speed</b>	31 pages-per-minute in full-color and B&W
<b>First Print Speed</b>	Color: 15 seconds; B&W: 10 seconds
<b>Dimensions (WxDxH)</b>	17.6" x 23.2" x 19.2" (446 mm x 589.5 mm x 487 mm)
<b>Weight</b>	110 lb. or less (50 kg)
<b>Warm-Up Time</b>	Less than 30 seconds
<b>Power Source</b>	120V, 60Hz
<b>Maximum Power Consumption</b>	990W or less
<b>Energy Saver Mode</b>	6W or less
<b>Maximum Paper Capacity</b>	Up to 2,300 sheets
<b>Standard Paper Capacity</b>	550 sheets
<b>Bypass Tray</b>	100 sheets
<b>Optional Paper Feed Unit</b>	550 sheets (up to three paper feed units can be added)
<b>Automatic Duplex</b>	Standard (prints at nearly 100% simplex speed through standard tray)
<b>Output Capacity</b>	500 sheets, face down
<b>Paper Sizes (All Sources)</b>	Letter (8.5" x 11"), A4 (8.3" x 11.7"), A5 (210 x 297 mm), EXE (7.25" x 10.5"), B5 (6.9" x 9.8"), Legal (8.5" x 14") Custom Sizes: Standard Paper Tray and Optional Paper Feed Units: (width 3.9" – 8.5", length 5.8" – 14") Bypass Tray (width 2.8" – 8.5", length 5.5" – 35.4")
<b>Paper Weight (All Sources)</b>	14 lb. – 57 lb. Bond / 120 lb. Index (52 – 216 g/m <sup>2</sup> ) Duplexing: 16 lb. – 43 lb. Bond / 90 lb. Index (60 – 163 g/m <sup>2</sup> )
<b>Acceptable Paper Types (All Sources)</b>	Thick paper/Card stock (Up to 57 lb. / 120 lb. Index / 216 g/m <sup>2</sup> ), Plain Paper/Recycled Paper, Laser Printer Qualified Transparencies, Envelopes (Com 10, Monarch, C6, C5, DL)
<b>Safety Regulations</b>	UL UL60950, FCC Part15 Class B device, Energy Star Tier 2 compliant

### Controller Specifications

<b>CPU</b>	PMC-Sierra RM7935-835L 800 MHz
<b>Printer Languages</b>	Adobe PostScript3, PCL 5c, PCL 6, Ricoh RPCS, PDF Direct, PictBridge™ (optional)
<b>Fonts</b>	136 PostScript 3 fonts, 45 PCL fonts, 13 International fonts
<b>Memory (RAM)</b>	256 MB RAM standard; 512 MB RAM maximum
<b>Hard Disk Drive</b>	60 GB optional (40 GB reserved for file storage)

### Standard Interfaces

10/100Base-TX Ethernet, USB 2.0, USB Host I/F

### Optional Interfaces

IEEE 1284, IEEE 802.11a/g Wireless LAN, Bluetooth Wireless, Gigabit Ethernet

### Network Protocols

Simultaneous auto-sensing/auto switching TCP/IP, Novell IPX/SPX, AppleTalk

### Operating Systems

Windows 2000/XP/Server 2003/Vista; NetWare v 3.12, 3.2, 4.1, 4.11, 5.0, 5.1, 6, 6.5; Macintosh OS 8.6 – 9.2x, OS X 10.1, 10.2, 10.3 or later; UNIX (using Ricoh UNIX filter Phase 11) Sun Solaris, HP-UX, Red Hat Linux, SCO Open Server, IBM AIX (for UNIX support, visit [www.ricoh-usa.com/downloads](http://www.ricoh-usa.com/downloads)); SAP R/3 3.x or later

### Drivers

RPCS/PCL 5c/PCL 6: Windows 2000/XP/Server2003/Vista  
XPS: Windows Vista (via download only)  
PS: Windows 2000/XP/Server 2003/Vista; Mac OS 8.6 – 9.2x, OS X 10.1 or later; UNIX: Sun Solaris, HP-UX, Red Hat Linux, SCO OpenServer, IBM AIX  
SmartDeviceMonitor for Admin, Web SmartDeviceMonitor, Web Image Monitor, DeskTopBinder V2 Lite, Printer Utility for Mac, Agfa Font Manager 2000, DeskTopBinder Professional (optional)

### Print Utilities

### Controller Options

<b>60 GB Hard Disk Drive</b>	Type 420	Part #402999
<b>IEEE 1284 Interface</b>	Type A	Part #411699
<b>IEEE 802.11a/g Interface</b>	Type L	Part #403000
<b>Bluetooth Interface</b>	Type 3245	Part #412866
<b>Gigabit Ethernet</b>	Type A	Part #402547
<b>Data Storage Card</b>	Type A	Part #402627
<b>VM Card</b>	Type H	Part #403054
<b>Device Customization: VM Card for Java-based device SDK option</b>		
<b>Camera Direct Print Card (SD Card)</b>	Type D	Part #402996
Enables direct printing from a PictBridge™-enabled digital camera, without a PC.		

### Memory Options

<b>128 MB Memory Unit</b>	Type G	Part #402965
<b>256 MB Memory Unit</b>	Type G	Part #414046
<b>144-pin DIMM SD-RAM (PC133 Compliant); Maximum 512 MB</b>		

### Security Options

<b>DataOverwriteSecurity System (DOSS) (optional)</b>	Type K	Part #402998
Overwrites latent data on the system's hard drive after print jobs.		
<b>HDD Encryption Unit (optional)</b>	Type C	Part #402997
Encrypts data stored in the device's NVRAM and on the Hard Disk Drive.		

### Other Security Features

SNMP v3 Authentication and Data Encryption (password/address book encryption); Print Data Encryption via Internet Printing Protocol (IPP); PDF Direct Print Password Protection; Locked (Secure) Print; 500 User Account Codes; User Authentication; WPA (Wi-Fi Protect Access Support)

### Paper Handling Accessories

#### Paper Feed Unit Type 4000: Part #420165

**Paper Size** Standard: Letter (8.5" x 11"), A4 (8.3" x 11.7"), A5 (210 x 297 mm), EXE (7.25" x 10.5"), B5 (6.9" x 9.8"), Legal (8.5" x 14")  
Custom: (width 3.9" – 8.5", length 5.8" – 14")

**Free Paper Weights** 14 – 57 lb. Bond /120 lb. Index (52 – 216 g/m<sup>2</sup>)

**Capacity** 550 sheets; up to 3 units may be added

#### Printer Stand FAC29: Part #402390

### Consumables

<b>HY Black Toner Cartridge</b>	Part #888308	Yield: 15,000 pages*
<b>HY Yellow Toner Cartridge</b>	Part #888309	Yield: 15,000 pages*
<b>HY Magenta Toner Cartridge</b>	Part #888310	Yield: 15,000 pages*
<b>HY Cyan Toner Cartridge</b>	Part #888311	Yield: 15,000 pages*
<b>Black Toner Cartridge</b>	Part #888276	Yield: 5,000 pages*
<b>Yellow Toner Cartridge</b>	Part #888277	Yield: 5,000 pages*
<b>Magenta Toner Cartridge</b>	Part #888278	Yield: 5,000 pages*
<b>Cyan Toner Cartridge</b>	Part #888279	Yield: 5,000 pages*
<b>Photoconductor Unit Black</b>	Part #402319	Yield: 50,000 pages
<b>Photoconductor Unit Color</b>	Part #402320	Yield: 50,000 pages
<b>Waste Toner Bottle</b>	Part #402324	Yield: 50,000 pages
<b>Intermediate Transfer Unit</b>	Part #402323	Yield: 100,000 pages
<b>Maintenance Kit (Type C411)</b>	Part #402593	Yield: 100,000 pages
Includes Fusing Unit, Transfer Roller, Paper Feed Roller.		
<b>Paper Feed Roller for 3rd Paper Feed Unit</b>	Part #403066	Yield: 100,000 pages

\*Declared yield value in accordance with ISO/IEC 19798. The SP C420DN ships with starter toner cartridges that yield 3,000 pages; all other consumables ship at full yield. For maximum performance and yield, we recommend using genuine Ricoh parts and supplies. Specifications subject to change without notice.

**RICOH**

[www.ricoh-usa.com](http://www.ricoh-usa.com)

Ricoh Americas Corporation, Five Dedrick Place, West Caldwell, NJ 07006  
Ricoh® and the Ricoh Logo are registered trademarks of Ricoh Company, Ltd. Windows® and Windows® 98/2000/NT4.0/XP/2003/Vista are registered trademarks of Microsoft Corporation. Macintosh® is a registered trademark of Apple Computer, Inc. PCL is a registered trademark of Hewlett-Packard Company. PictBridge is a registered trademark of Canon, Inc. All other trademarks are the property of their respective owners. Print speed may be affected by network, application or PC performance. Specifications and external appearances are subject to change without notice. Products are shown with optional features.

Printed in U.S.A. on recycled paper because Ricoh cares.

R2732

Download from [Www.Somanuals.com](http://Www.Somanuals.com). All Manuals Search And Download.



## Free Manuals Download Website

<http://myh66.com>

<http://usermanuals.us>

<http://www.somanuals.com>

<http://www.4manuals.cc>

<http://www.manual-lib.com>

<http://www.404manual.com>

<http://www.luxmanual.com>

<http://aubethermostatmanual.com>

Golf course search by state

<http://golfingnear.com>

Email search by domain

<http://emailbydomain.com>

Auto manuals search

<http://auto.somanuals.com>

TV manuals search

<http://tv.somanuals.com>