

**RICOH Pro C900**  
Color Production System  
Improve Capacity and Build Your Business

# RICOH



workflow



productivity



speed



# RICOH Pro C900 Color Production System

Fast, flexible and low cost — this versatile digital color production system meets all your business needs.

Faster turnaround for last-minute jobs. Higher throughput during peak production. Greater flexibility for inline finishing. Lower operating costs for full-color applications. That's why we engineered the RICOH® Pro C900 to deliver all this, and much more.



# ProductivitySpeedQualityConsistency

## Versatile Imaging, Exceptional Color

Equipped to produce an incredible variety of color documents, this versatile digital color production system empowers you to take on new kinds of jobs, finish them faster and keep your customers coming back for more.

- Offers unprecedented speed for its class, a fail-safe design that maximizes uptime and user-friendly features that keep productivity high. The RICOH Pro C900 also provides exceptional color quality, extensive finishing options and complete end-to-end workflow solutions.
- Combine these essentials with the service and support network of Ricoh, a trusted global brand, and the result is a truly impressive digital color production system that opens up a whole new world of opportunities for light production environments.

## Increase Productivity, Grow Revenue

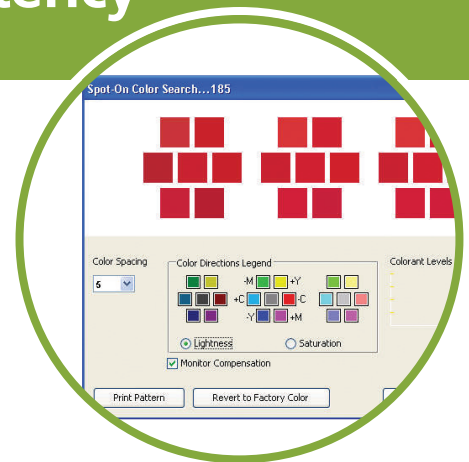
Whether you want to add full-color capacity, offload work from other systems or migrate select jobs to more cost-effective technology, the RICOH Pro C900 provides the speed and productivity you need to generate more revenue.

- Deliver every document faster with a 90 page-per-minute print engine. Compared to an 80 page-per-minute device, this engine yields 24,000 more color pages every week.
- Never let your choice of media hinder productivity. The RICOH Pro C900 handles heavy media weights—up to 110 lb. Cover through the 13" x 19.2" Large Capacity Tray—without slowing down, so you can reduce turnaround time for direct mail, Variable Data Printing (VDP) and other applications that require heavier media.
- Replace Toner Bottles, reload and auto-link Media Trays without stopping jobs in progress, enabling long, unattended print runs. Toner yield is unprecedented at 72,000 prints per bottle.
- Access the advanced print controller and program tasks quickly through the user-friendly, easy-to-read, 10.4-inch color touch-screen display.

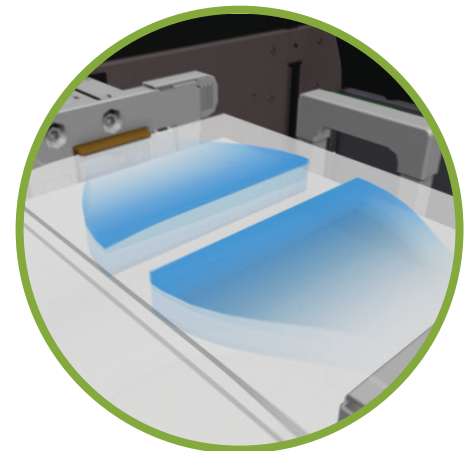
## Consistent, Repeatable Quality

In any operation, the RICOH Pro C900 can quickly become the go-to system for consistent, high-quality color output. Its innovative design is geared to provide steady, reliable results on a wide variety of media, even in demanding light production environments.

- Impress your customers with outstanding 1200 x 1200 dpi image quality. By matching the resolution of higher-volume systems, the RICOH Pro C900 lets you redirect short-run color jobs to a more affordable alternative.
- Minimize density reduction in high color coverage areas with a stabilizing, single-direction development method.
- Enhance image quality in high-density areas with the newly formulated developer.
- Take advantage of more consistent color quality from print-to-print and throughout long print runs with innovative sensors that adjust and compensate for minor color shifts in the imaging process.



Intelligent Color Management allows you to adjust color output to suit a variety of application-specific needs.



The Air-Assist Media Feed Mechanism blows air between individual sheets to counteract static cling and eliminate multi-feeds, making it easy for you to run more jobs that require coated media.



The RICOH Pro C900 is perfect for Variable Data Printing, an application that is increasing in popularity and can help you attract new customers.

# Flexible Efficient Profitable Reliable

## Broad Range of Media

**Integrate the RICOH Pro C900 into your printing environment and instantly expand the types of jobs you can divert to this short-run digital color production system.**

- Run a wide variety of conventional and specialty stocks in sizes up to 13" x 19.2", so you can take on more jobs regardless of media requirements.
- Reduce operator intervention during complex jobs. Print drivers support advanced page programming for mixed media, so you can automate the selection of various stocks during job preparation and submission.

## Flexible Inline Finishing

**Accommodate more specialty jobs and complete them more efficiently. Look to Ricoh to help you select the right options for your specific job requirements.**

- Configure a complete end-to-end document finishing solution that aligns perfectly with your volume, applications, workflow and budget.
- Shorten turnaround time and save money. Multiple finishing options allow you to process various types of complex jobs without taking them offline for time-consuming manual finishing.

## Integrated Workflow Tools

**The RICOH Pro C900 supports a complete line of integrated workflow solutions that establish unparalleled end-to-end control over digital file processing at every stage of production.**

- Create a smooth, uninterrupted and completely transparent process that covers Web-to-print submission, ticketing, acceptance, pre-flight, make-ready, print production, job management, finishing, archiving/retrieval and accounting.
- Save time and streamline production with EFI™ Hot Folders. Operators simply drag a file into the folder and it is processed automatically according to preset instructions, with no intervention.
- Capitalize on the emergence of Variable Data Printing (VDP). Add more value to documents and drive volume of customized output by implementing open architecture and flexible VDP solutions.
- Use advanced profile creation tools to ensure color matching across a wide range of input and output devices.
- Leverage the smartest, most effective workflow solutions and streamline every aspect of your production environment, through Ricoh's partnerships with proven industry-leading technology innovators. These partners enable Ricoh to coexist seamlessly within current production environments.



## Your Environmental Partner



**Ricoh continues its long-standing commitment to developing solutions with environmentally friendly and superior energy- and supply-saving features, without compromising productivity, including:**

- Duplex Modes
- Minimal Ozone Emissions
- Restriction of Hazardous Substances Compliant (RoHS)
- Low Noise Levels

# Engineered for Reliable Performance

## Take a Closer Look at the RICOH Pro C900

Build the perfect digital color production system as your company's needs grow using the flexible RICOH Pro C900 modular components.

### Intuitive Operation Panel

Use the clear, easy-to-read Operation Panel to gain direct access to the Job Queue and other advanced functions of the system's EFI™ Fiery® print controller.

### Trained Customer Replaceable Units

Trained Customer Replaceable Units (TCRUs) enable trained operators to replace key hardware components quickly, to maximize uptime.

### Easy Toner Replacement

Replace toner on the fly with ease. Simply load a Toner Bottle into the loading slot, and slide the bottle in.

### Status Light

Check the system at-a-glance with the status indicator light.

### Vast Media Capacity

Load the system once and run for hours without interruption. With all options, the system holds up to 11,000 sheets and handles output up to 13,000 sheets.

### Heavy Media Support

The RICOH Pro C900 can handle heavy media at its full rated speed of 90 pages-per-minute.

### @Remote™

Ensure accurate, timely meter reads and billing. The Ricoh @Remote™ service solution automatically collects device data and reports media and toner alerts.

### EFI™ Fiery® Print Controller

Establish end-to-end control over digital file processing at every stage of production with integrated workflow utilities from EFI™ Fiery®.

### Versatile Finishing Options

The RB5000 Ring Binder and SR5000 3,000 Sheet Finishers are just some of the numerous options you can use to help operators complete more jobs inline and reduce the need for manual finishing.

### Large Capacity Tray

With two drawers that each hold up to 2,000 sheets, including sizes up to 13" x 19.2", the RT5020 Large Capacity Tray\* allows you to reproduce full-bleed 11" x 17" documents while preserving crop marks and borders.

\*A total of two 13" x 19.2" LCTs can be added for a total of 4,000 sheets.

### High-Capacity Stacker (not shown)

Leverage your current investment in offline finishing with the optional SK5000 High-Capacity Stacker, which holds up to 5,000 sheets. Add up to two units with a roll-away cart to easily transport 10,000 sheets of neatly stacked output for inline finishing, packing and distribution.



### RB5000 Ring Binder\*

The Ring Binder automates the entire binding process, so operators can prepare incoming jobs while additional jobs are being ring-bound. So, you can improve productivity and reduce the risk of bottlenecks. Choose two ring sizes for documents up to 50 or 100 sheets.



### GBC StreamPunch™ III\*

This interchangeable die punch unit rapidly produces punched documents in a variety of binding styles—without labor-intensive manual punch operations. Inline punching eliminates additional production steps, saving time and eliminating costly errors.



### GB5000 Perfect Binder\*

Expand your repertoire to include inline perfect-bound books up to 100 sheets (200 impressions). This finisher automatically trims collated pages (three sides or one side) and applies the perfect binding without operator intervention—so you can reduce labor costs.

\*Please contact your RICOH Pro C900 Sales Representative for availability.

# RICOH Pro C900

## System Specifications

### Main Unit

<b>Main Unit Base Configuration</b>	Pro C900 Base Unit includes Plotting Engine, EFI Fiery Print Controller, 2 x 1,000-Sheet Tandem Tray, 1 x 500-Sheet Tray and 10.4" Operation Panel
<b>Printing Process</b>	Dry electrostatic transfer with internal transfer belt; 4-drum method
<b>Maximum Print Resolution</b>	1200 dpi
<b>Output Speed</b>	8.5" x 11": 90 pages-per-minute in B&W and full-color Less than 420 seconds
<b>Warm-Up Time</b>	
<b>Optional Input Trays:</b>	
<b>RT5000 Letter Large Capacity Tray</b>	Tray 1: 1,000 sheets Tray 2: 1,000 sheets Tray 3: 2,550 sheets Total: 4,550 sheets
<b>RT5020 Large Capacity Tray</b>	13" x 19.2" Large Capacity Tray: 2 x 2,000-Sheet Trays Total: 4,000 sheets
<b>BY5000 Multi-Bypass Tray</b>	500-Sheet Multi-Bypass Tray Unit: Total: 500 sheets

<b>Maximum Input Capacity</b>	11,000 sheets (fully configured)
<b>Optional Output Stacking Devices:</b>	
<b>SR5000 Finisher</b>	3,000 sheets (100-sheet stapling)
<b>SK5000 High-Capacity Stacker</b>	5,000 sheets (up to two units can be added; roll-away media cart included)
<b>Maximum Output Media Capacity</b>	13,000 sheets (fully configured)
<b>Media Size</b>	
<b>(Standard Input Trays):</b>	Tray 1: 8.5" x 11" (tandem), 11" x 17" with optional Tandem Tray Converter Tray 2: 5.5" x 8.5" – 13" x 18"

<b>Media Weight</b>	
<b>(Standard Input Trays):</b>	Tray 1: 16 lb. Bond – 80 lb. Cover Tray 2: 16 lb. Bond – 80 lb. Cover
<b>Dimensions (W x D x H)</b>	49.2" x 43.3" x 56.7"
<b>Weight</b>	1,543.2 lbs. (700 kg) or less
<b>Power Requirements</b>	240V, 24A
<b>Maximum Power Consumption</b>	Less than 5,500W

<b>EFI™ Fiery® Print Controller Specifications (Standard)</b>	
<b>CPU</b>	Intel Core Duo 2.16 GHz
<b>Memory</b>	2 GB
<b>Hard Disk Drive</b>	500 GB (250 GB x 2)
<b>Operating System</b>	Windows XP
<b>Fiery System Version</b>	Fiery System 8.0 Release 2
<b>Page Description Languages</b>	PCL5c, PCL6, Genuine Adobe® PostScript® 3™
<b>Network Interface</b>	Ethernet 1000/100/10BaseT
<b>Network Protocols</b>	TCP/IP (IPv4, IPv6), Apple Talk, SMB
<b>Client Operating System Support</b>	Windows 2000/2003/XP/Vista Mac OS/X v10.3.9 or later
<b>Standard Utilities:</b>	
<b>Print Submission &amp; Management</b>	EFI Driver, EFI Command WorkStation (PC & Mac), Fiery WebTools, EFI Hot Folders, EFI Virtual Printer, Macintosh Print Center Plug-Ins, Rush Printing, Print/Process Next, Advanced Job Re-Order, Suspend On Mismatch, Quick Doc Merge, Schedule Print

<b>Color Management &amp; Proofing</b>	EFI Fiery ColorWise, Fiery Graphic Arts Package
<b>Imposition &amp; Document Assembly</b>	Mixed Media, Paper Catalogue, Tab Shift, Insert Tab, Booklet Maker, EFI Impose, Fiery Edition
<b>Variable Data Printing</b>	PPML, EFI Fiery FreeForm, Fiery VDP Resource Manager, Creo VPS
<b>Additional Utilities</b>	Web Image Monitor, Ricoh @Remote

<b>Optional Utilities:</b>	
<b>Color Management &amp; Proofing</b>	Fiery Graphic Arts Package Premium Edition, EFI Color Profiler Suite V2.2
<b>Imposition &amp; Document Assembly</b>	EFI Compose Fiery Edition
<b>Color Measurement</b>	ES-1000 Color Spectrophotometer

### Security Specifications

SMTP v3 Authentication, POP before SMTP, PDF Encryption, User Codes

### Optional Input and Finishing Accessories

<b>RT5000 Letter Large Capacity Tray Media Capacity</b>	Tray 1: 1,000 sheets Tray 2: 1,000 sheets Tray 3: 2,550 sheets Up to 8.5" x 11"
<b>Media Size</b>	Top Two Trays: 16 lb. Bond – 80 lb. Cover Bottom Tray: 16 lb. Bond – 60 lb. Cover

<b>LCIT RT5020 13" x 19.2" Large Capacity Tray*</b>	
<b>Media Capacity</b>	2 x 2,000-Sheet Trays
<b>Media Size</b>	5.5" x 8.5" – 13" x 19.2"
<b>Media Weight</b>	16 lb. Bond – 110 lb. Cover
*For tandem connection, Bridge Unit BU5000 is required for 13" x 19.2" Large Capacity Tray. Up to two units can be connected.	

<b>BY5000 500-Sheet Multi-Bypass Tray Unit</b>	
<b>Media Capacity</b>	500 sheets
<b>Media Size</b>	5.5" x 8.5" – 13" x 19.2"
<b>Media Weight</b>	16 lb. Bond – 80 lb. Cover/ 120 lb. Index

<b>CI5010 2-Tray Cover Interposer</b>	
<b>Stack Capacity</b>	2 x 200-Sheet Trays
<b>Media Size</b>	5.5" x 8.5" – 13" x 19.2"
<b>Media Weight</b>	17 lb. Bond – 80 lb. Cover

<b>SR5000 3,000 Sheet Finisher/Stapler</b>	
<b>Media Size</b>	5.5" x 8.5" – 11" x 17"; Up to 13" x 19.2"
<b>Media Weight</b>	Proof Tray: 16 lb. Bond – 80 lb. Cover Shift Tray: 16 lb. Bond – 110 lb. Cover

<b>Stack Capacity</b>	Proof Tray: 500 sheets (8.5" x 11" or smaller) Shift Tray: 3,000 sheets (8.5" x 11" or smaller)
<b>Staple Capacity</b>	100 sheets: 8.5" x 11" 50 sheets: 8.5" x 14" or smaller Z-Fold: 10 sheets

<b>Staple Positions</b>	Top, Bottom, 2 Staples, Top-Slant
<b>Finisher Accessories</b>	Hole Punch Unit (2 or 3 holes)

<b>BK5000 Saddle Stitch Unit</b>	
<b>Media Size</b>	Without Z-Fold: 5.5" x 8.5" – 12" x 18"; Up to 13" x 19.2" With Z-Fold: 8.5" x 11", 8.5" x 14", 11" x 17"
<b>Media Weight</b>	16 lb. Bond – 110 lb. Cover

<b>Staple Capacity</b>	15 sheets (20 lb. Bond)
<b>Stack Capacity After Saddle Stitch</b>	30 sets
<b>Punch Unit PU5000NA</b>	For 3/2 hole punch
<b>Punch Unit PU5000SC</b>	For 4 hole punch

<b>GB5000 Perfect Bind Unit</b>	
<b>Booklet Size</b>	Width: 7.81" x 11.69" Length: 5.5" x 8.5"
<b>Media Weight Capacity</b>	24 lb. Bond – 110 lb. Cover 10 – 200 sheets (400 pages in Duplex mode) 7 sets (100 sheets per set)
<b>Stack Capacity</b>	2 x 200-Sheet Trays
<b>Cover Interposer Tray Type GB5000</b>	
<b>Transit Pass Unit Type GB5000</b>	For perfect bind*
*Transit Pass Unit Type GB5000 is required.	

<b>ZF4000 Z-Fold Unit With Shift Tray and Proof Tray</b>	Media Size: 8.5" x 11", 8.5" x 14", 11" x 17" SEF Stack Weight: 17 – 20 lb. Bond Media Size: 11" x 17"
<b>With Staple Tray</b>	Stack Weight: 17 – 20 lb. Bond

<b>BK5010 Production Level Booklet Maker* Maximum Booklet Capacity</b>	30 sheets (120 pages)
<b>Finishing Speed</b>	Maintains rated engine speed of 90 ppm Width: 8.1" – 12.6" Length: 10.8" – 18"
<b>Supported Media Size</b>	16 lb. Bond – 172 lb. Index**
<b>Supported Media Weight</b>	16 lb. Bond – 172 lb. Index**
<b>Optional Accessories</b>	TR5010 for face trimming BF5010 for square book folding CF5010 for cover feeding/ interposing/Rail Kit

\*Manufactured by Plockmatic International AB.  
\*\*Booklet Maker supports up to 172 lb. Index in offline mode only. The Pro C900 supports up to 80 lb. Cover online when combined with the Booklet Maker.

<b>GBC StreamPunch™ III Finisher</b>	
<b>Punch Type</b>	Customer-replaceable die sets (7)
<b>Supported Media Size</b>	8.5" x 11" LEF (11" side only)

<b>RB5000 Ring Bind Unit</b>	
<b>Media Size</b>	8.5" x 11"
<b>Media Weight</b>	16 lb. Bond – 80 lb. cover
<b>Bind Capacity</b>	2 – 100 sheets
<b>Stack Capacity</b>	Binding Mode: 11 sets (100 pages per set) Punching Mode: 50 sets

<b>Ring (Consumables)</b>	
<b>Ring Opener</b>	Ring Bind Element for 50 sheets Ring Bind Element for 100 sheets Type A

<b>SK5000 High-Capacity Stacker* Media Sizes</b>	5.5" x 8.5" – 11" x 17"; Up to 13" x 19.2"
<b>Media Weight</b>	16 lb. Bond – 110 lb. Cover
<b>Stack Capacity</b>	5,000 sheets
<b>Roll-Away Cart</b>	Type 5000
*Up to two units can be connected.	

<b>Additional Accessories</b>	Tab Sheet Unit, 11" x 17" Tandem Tray Converter, Optional Counter Interface Unit Type A
-------------------------------	---

<b>Consumables</b>	
<b>Cyan, Magenta, Yellow, Black Toner*</b>	72,000 pages yield per bottle
*Yields based on 5% coverage. For maximum performance and yield, we recommend using genuine Ricoh parts and supplies.	

**RICOH**  
www.ricoh-usa.com

Bringing Ricoh Value to Your Organization  
Ricoh technology offers a diverse portfolio of solutions to help your organization stay competitive and move ahead. Let Ricoh show you how to empower your business to improve critical processes, keep information secure, ensure compliance and promote environmental sustainability while reducing the total cost of ownership.

Printed in U.S.A. on recycled paper because Ricoh cares.

Ricoh Americas Corporation, Five Dedrick Place, West Caldwell, NJ 07066  
Ricoh® and the Ricoh Logo are registered trademarks of Ricoh Company, Ltd. All other trademarks are the property of their respective owners. Print speed may be affected by network, application or PC performance. Specifications and external appearances are subject to change without notice. Products are shown with optional features.

R2779

Download from Www.Somanuals.com. All Manuals Search And Download.



## Free Manuals Download Website

<http://myh66.com>

<http://usermanuals.us>

<http://www.somanuals.com>

<http://www.4manuals.cc>

<http://www.manual-lib.com>

<http://www.404manual.com>

<http://www.luxmanual.com>

<http://aubethermostatmanual.com>

Golf course search by state

<http://golfingnear.com>

Email search by domain

<http://emailbydomain.com>

Auto manuals search

<http://auto.somanuals.com>

TV manuals search

<http://tv.somanuals.com>