

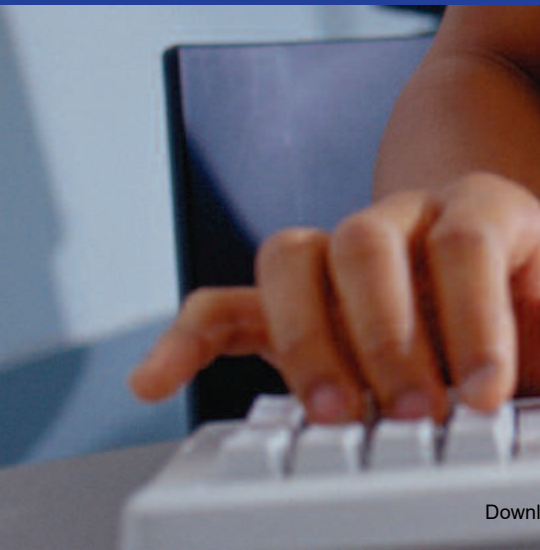
Ricoh Aficio MP 1600L/MP 2000L  
Digital Imaging Systems  
Three Fundamental Office Solutions  
In One Cost-Effective System

**RICOH**

powerful

compact

affordable



## Functional. Affordable. And Built for Today's Business.

It's time to get the all-in-one office system you want—copy, print and scan—with the affordability you have been looking for. The RICOH® Aficio MP 1600L/MP 2000L packs network connectivity, quick output speeds and crisp resolution into a small footprint, making it ideally suited to Windows-based environments, such as small businesses, workgroups and offices that require a budget-friendly package.

## Copy, Print, Scan

Streamline your office with the convenience of an all-in-one system that is essential to running a business in today's competitive marketplace.

- Output high-quality documents whether copied, printed or scanned at 600 dpi resolution.
- Print documents created on most common business applications. Standard PCL5e/6 means you won't need additional software or upgrades to quickly get up and running.
- Conveniently and cost-effectively share and archive documents using advanced TWAIN Scanning. You will also save space and money by not having to invest in an extra desktop scanner.
- Scan and copy larger documents—saving outsourcing fees—using the standard ledger-sized 11" x 17" platen.

## Speed Up Everyone's Day

The Ricoh Aficio MP 1600L/MP 2000L boosts productivity by streamlining common tasks and minimizing needless interruptions and delays that can slow down everyone's workday.

- Boost production by outputting 16 or 21 pages per minute.
- Run job after job without interruption with a generous maximum paper capacity of up to 1,600 sheets.
- Save time, paper and filing space with stackless duplexing on the Ricoh MP 2000L, allowing you to conveniently copy or print two-sided documents.
- Enjoy virtually hands-free production by adding either an optional 30-sheet Automatic Document Feeder to the Ricoh Aficio MP 1600L or Ricoh Aficio MP 2000L or a 50-sheet Automatic Reversing Document Feeder to the Ricoh Aficio MP 2000L, which processes two-sided documents automatically.
- Quickly complete any task with the user-friendly control panel that comes standard with a 4-line LCD display and intuitive controls.
- Easily refill paper trays, whether standing or sitting, using the optional Accessibility Handles.

## Connect the Way you Want

- Easily connect directly to standalone PCs and laptops with the standard USB 2.0 Interface.
- Network your Ricoh Aficio MP 1600L/MP 2000L with multiple users with the standard 10BaseT/100BaseTX Ethernet Interface.

### Engine/Copier Specifications

Configuration	Console
Scanning Element	Flatbed with CCD Array Image Sensor
Toner	Dry Process (dual component)
System Memory	16 MB (std./max.)
Document Feeder	Optional 30-sheet ADF (MP 1600L/MP 2000L) Optional 50-sheet ARDF (MP 2000L)
Copy Resolution	600 x 600 dpi
Grayscale	256 Levels
Quantity Indicator	1-99
Original Type	Sheet/Book
Original Size	Up to 11" x 17"
Copy Size	5.5" x 8.5" to 11" x 17"
Warm-Up Time	15 seconds
First-Copy Speed	6.5 seconds
Continuous Copy Speed	16 copies/minute (MP 1600L); 21 copies/minute (MP 2000L)
Recovery Time (from Auto Off)	Less than 10 seconds
Power Source	120 V/60 Hz
Dimensions (WxDxH)	21.6" x 22.4" x 16.5" (MP 1600L); 23.1" x 22.4" x 22" (MP 2000L)
Weight	78 lbs. (MP 1600L); 103 lbs. (MP 2000L)
Standard Paper Capacity	250 Sheets x 1 Tray (MP 1600L); 250 Sheets x 2 Trays (MP 2000L); 100-sheet Bypass Tray
Optional Paper Capacity	500 Sheets x 1 Tray or 500 Sheets x 2 Trays
Paper Size	5.5" x 8.5" to 11" x 17"
Paper Weight	16 to 24 lb. Bond (Paper Trays); 14 to 43 lb. Bond/90 lb. Index (Bypass Tray); 20 to 24 lb. Bond (Duplex Unit)
Preset Ratios	50%; 65%; 78%; 93%; 121%; 129%; 155%
Zoom	50% to 200% in 1% increments

### Copier Features

Auto Paper Selection, Auto Reduce/Enlarge, Auto Tray Switching\*, Combine Copy (2 in 1, 4 in 1), Electronic Sort, Image Rotation, Photo Mode, Rotate Sorting\*, Series Copy, User Codes (50)  
\*Requires optional Paper Bank on the MP 1600L.

### Printer Specifications

Print Speed	16 ppm (MP 1600L); 21 ppm (MP 2000L)
CPU	D8701 200 MHz
Memory Capacity	64 MB
Standard Interfaces	Ethernet 10BaseT/100BaseTX; USB 2.0
Network Protocol	TCP/IP; IPX/SPX; AppleTalk
Network Operating	Windows® 2000/XP/Server 2003 (Standard Edition)
Page Description Languages	PCL5e*/6
Print Resolution	600 x 600 dpi
Fonts for PCL5e/6	35 Intellifonts, 10 TrueType Fonts, 1 Bitmap

\*Available as a download from the Ricoh website.

### Printer Features

Automatic Tray Select, Duplex Printing (MP 2000L), Envelope Printing, Watermarks

### Scanner Specifications

Scanning Resolution	600 dpi
Scan Area	Up to 11" x 17"
Standard Interfaces	10BaseT/100BaseTX; USB 2.0
Protocol	TCP/IP

### Scanner Features

Black & White TWAIN Scanning, Duplex Scanning (MP 2000L)

### Accessories

#### DF2000 Automatic Document Feeder

Original Size/Capacity	5.5" x 8.5" to 11" x 17"/30 Sheets
Original Weight	14 to 28 lb. Bond
Dimensions (WxDxH)	21.6" x 18.5" x 3.55"
Weight	15.4 lbs.

#### DF2010 Automatic Reversing Document Feeder (MP 2000L only)

Original Size/Capacity	5.5" x 8.5" to 11" x 17"/50 Sheets
Original Weight	Simplex Original: 10 to 34 lb. Bond; Duplex Original: 17 to 28 lb. Bond
Dimensions (WxDxH)	21.6" x 18.5" x 5.1"
Weight	22.05 lbs.

#### PS450 Paper Bank

Paper Capacity	500 Sheets x 2 Trays
Paper Size	5.5" x 8.5" to 11" x 17"
Paper Weight	16 to 28 lb. Bond
Dimensions (WxDxH)	21.6" x 20.5" x 10.6"
Weight	55.1 lbs.

#### PS460 Paper Bank

Paper Capacity	500 Sheets x 1 Tray
Paper Size	5.5" x 8.5" to 11" x 17"
Paper Weight	16 to 28 lb. Bond
Dimensions (WxDxH)	21.6" x 20.5" x 5.3"
Weight	26.05 lbs.

www.ricoh-usa.com



Ricoh Corporation, Five Dedrick Place, West Caldwell, NJ 07006  
RICOH and the Ricoh Logo are registered trademarks of Ricoh Company, Ltd. Windows® and Windows® NT4.0/2000/XP are registered trademarks of Microsoft Corporation. PCL is a registered trademark of Hewlett-Packard Company. All other trademarks are the property of their respective owners. Print speed may be affected by network, application or PC performance. Specifications and external appearances are subject to change without notice. Products are shown with optional features.

Printed in U.S.A. on recycled paper because Ricoh cares.

CA-0591

## Free Manuals Download Website

<http://myh66.com>

<http://usermanuals.us>

<http://www.somanuals.com>

<http://www.4manuals.cc>

<http://www.manual-lib.com>

<http://www.404manual.com>

<http://www.luxmanual.com>

<http://aubethermostatmanual.com>

Golf course search by state

<http://golfingnear.com>

Email search by domain

<http://emailbydomain.com>

Auto manuals search

<http://auto.somanuals.com>

TV manuals search

<http://tv.somanuals.com>