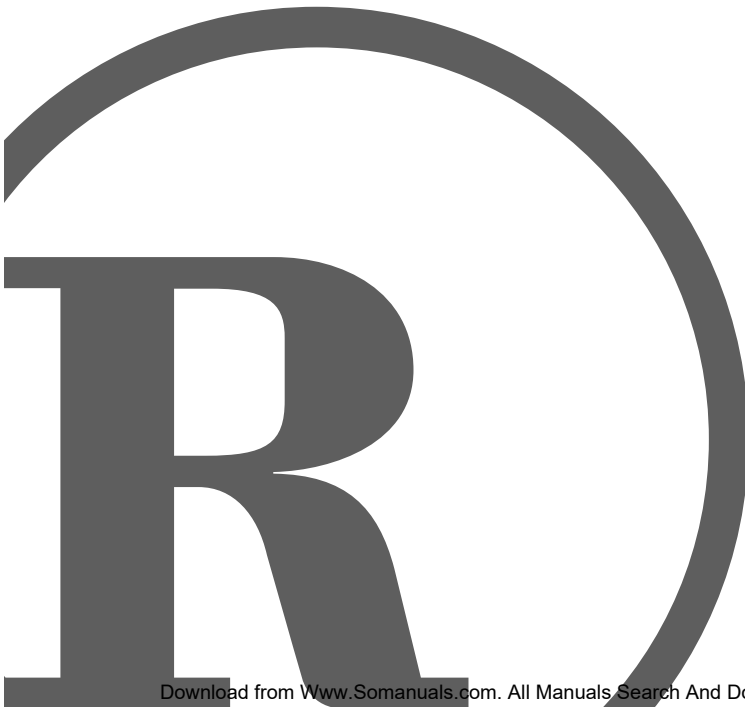




**RadioShack®**

www.radioshack.com

# USB Flatbed Color Scanner



---

---

# Contents

|                                                  |           |
|--------------------------------------------------|-----------|
| <b>Features</b> .....                            | <b>3</b>  |
| The FCC Wants You to Know .....                  | 4         |
| FCC Declaration of Conformity .....              | 4         |
| System Requirements .....                        | 5         |
| Monitor Requirements .....                       | 5         |
| <b>Important Safety Instructions</b> .....       | <b>6</b>  |
| <b>Preparation</b> .....                         | <b>8</b>  |
| Locking/Unlocking the Scanner .....              | 8         |
| Connecting AC Power to the Scanner .....         | 8         |
| Installing the Scanner's Software/Hardware ..... | 8         |
| Verifying Successful Connection .....            | 9         |
| <b>Default Button Settings</b> .....             | <b>10</b> |
| <b>Operation</b> .....                           | <b>11</b> |
| Getting Help .....                               | 11        |
| Using the Scanner's Buttons .....                | 11        |
| Using the Scanner Icon .....                     | 11        |
| Using the Supplied PaperPort Software .....      | 12        |
| Using the Twain Button .....                     | 13        |
| <b>Configuring the Scanner</b> .....             | <b>15</b> |
| Changing a Scanner Button's Settings .....       | 15        |
| Adjusting Scan and Page Settings .....           | 15        |
| Pre-Defining Scan Settings .....                 | 17        |
| Adjusting Brightness and Contrast .....          | 18        |
| <b>Troubleshooting</b> .....                     | <b>19</b> |
| <b>Care and Maintenance</b> .....                | <b>20</b> |
| <b>Specifications</b> .....                      | <b>21</b> |

© 2000 Tandy Corporation.  
All Rights Reserved.

RadioShack is a registered trademark used by Tandy Corporation.  
RadioShack.com is a trademark used by Tandy Corporation.

---

---

# □ Features

Your RadioShack USB Flatbed Color Scanner is designed for notebook or desktop PCs that have a universal serial bus (USB) port. You can use the scanner to quickly scan information, such as documents and photographs, in color or grayscale. Then you can use the software supplied with your scanner to convert the scanned images to electronic files.

Your scanner's features include:

**USB Operation** — lets you easily connect and begin using the scanner.

**600 × 1200 DPI (Dots per Inch) Resolution** — provides high-resolution scanning.

**36-Bit Color Scanning** — your scanner scans over 68 billion colors.

**On-Screen Control** — you can control the scanner directly from your computer's screen using the supplied software.



**On-Scanner Controls** — lets you also use the scanner's buttons to control it, so you can use the scanner even if it is located away from your computer.

**Wide Scanning Area** — lets you scan most documents.

**Supplied PaperPort® Software** — lets you quickly link images you scan with more than 150 applications you use everyday.

**Fast Scanning** — scans and outputs images in seconds.

**WARNING:** To reduce the risk of fire or shock hazard, do not expose this product to rain or moisture.

|                                                                                                                                                               |                                                           |                                                                                    |
|---------------------------------------------------------------------------------------------------------------------------------------------------------------|-----------------------------------------------------------|------------------------------------------------------------------------------------|
|                                                                              | <b>CAUTION</b><br>RISK OF ELECTRIC SHOCK.<br>DO NOT OPEN. |  |
| <b>CAUTION:</b> TO REDUCE THE RISK OF ELECTRIC SHOCK, DO NOT REMOVE COVER OR BACK. NO USER-SERVICE-ABLE PARTS INSIDE. REFER SERVICING TO QUALIFIED PERSONNEL. |                                                           |                                                                                    |



This symbol is intended to alert you to the presence of uninsulated dangerous voltage within the product's enclosure that might be of sufficient magnitude to constitute a risk of electric shock. Do not open the product's case.



This symbol is intended to inform you that important operating and maintenance instructions are included in the literature accompanying this product.

The graphical symbols with supplemental markings are located on the bottom of the scanner.

# THE FCC WANTS YOU TO KNOW

This equipment complies with the limits for a Class B digital device as specified in Part 15 of *FCC Rules*. These limits provide reasonable protection against radio and TV interference in a residential area. However, your equipment might cause TV or radio interference even when it is operating properly. To eliminate interference, you can try one or more of the following corrective measures:

- reorient or relocate the receiving antenna
- increase the distance between the equipment and the radio or TV
- use outlets on different electrical circuits for the equipment and the radio or TV

Consult your local RadioShack store if the problem still exists.

You must use shielded interface cables with this equipment.

# FCC DECLARATION OF CONFORMITY

This device complies with Part 15 of the *FCC Rules*. Operation is subject to the following two conditions: (1) this device may not cause harmful interference, and (2) this device must accept any interference received, including interference that may cause undesired operation.

|                    |                                                        |
|--------------------|--------------------------------------------------------|
| Product:           | USB Flatbed Color Scanner                              |
| Model:             | FU62ED                                                 |
| Responsible Party: | RadioShack<br>100 Throckmorton<br>Fort Worth, TX 76102 |
| Phone:             | 817-415-3200                                           |



# SYSTEM REQUIREMENTS

- IBM® PC or compatible with one available USB port
- CD-ROM drive
- VGA or SVGA monitor
- 16MB or more of available internal memory (RAM)
- 35MB of free hard disk space
- Microsoft Windows® 98

**Important:** Your scanner will not work with Windows 95. You must have Windows 98 installed on your computer to use the scanner.

## MONITOR REQUIREMENTS

To use the scanner with your computer's monitor, set the monitor to High Color (16-bit) or True Color (24- or 32-bit). Then set your monitor's resolution to at least 800 × 600 DPI.

To set your monitor's colors and resolution, open the Windows *Control Panel*, double-click **Display**, then click **Settings**.

---

---

# □ **Important Safety Instructions**

1. Read Instructions — All the safety and operating instructions should be read before the scanner is operated.
2. Retain Instructions — The safety and operating instructions should be retained for future reference.
3. Heed Warnings — All warnings on the scanner and in the operating instructions should be adhered to.
4. Follow Instructions — All operating and use instructions should be followed.
5. Water and Moisture — The scanner should not be used near water (for example near a bathtub, in a wet basement, or near a swimming pool, and so on).
6. Carts and Stands — The scanner should be used only with a cart or stand that is recommended by the manufacturer.
7. Ventilation — The scanner should be situated so that its location or position does not interfere with its proper functioning. For example, the scanner should not be situated on a bed, sofa, rug, or similar surface that may obstruct the ventilation.
8. Heat — The scanner should be situated away from heat sources such as radiators, heat registers, stoves, or other scanners (including amplifiers) that produce heat.
9. Power Sources — The scanner should be connected to a power source only of the type described in the operating instructions or as marked on the scanner.
10. Power Cord Protection — Power supply cords should be routed so that they are not likely to be walked on or pinched by items placed upon or against them, paying particular attention to cords at plugs, convenience receptacles, and the point where the cords exit from the scanner.
11. Cleaning — The scanner should be cleaned only as recommended by the manufacturer. Do not use chemical cleaners.
12. Non-Use Periods — The power cord of the scanner should be unplugged from the outlet when the scanner is not being used for a long period of time.
13. Object and Liquid Entry — Care should be taken so that objects do not fall, and liquids are not spilled, on the scanner.
14. Damage Requiring Service — The scanner should be serviced by qualified service personnel when:
  - A. The power cord or the plug has been damaged; or
  - B. Objects have fallen, or liquid has been spilled into the scanner; or

C. The scanner has been exposed to rain; or

D. The scanner does not appear to operate normally or exhibits a marked change in performance; or

E. The scanner has been dropped, or the enclosure has been damaged.

15. Servicing — The user should not attempt to service the scanner beyond that described in the operating instructions. All other servicing should be referred to qualified service personnel.

---

---

## Preparation

### LOCKING/UNLOCKING THE SCANNER

Your scanner has a locking mechanism to protect it during shipment or while you move it.

Before you use the scanner, slide **LOCK/UNLOCK** on the bottom of the scanner toward **UNLOCK**. To protect the scanner's mechanism when you move or ship it, slide **LOCK/UNLOCK** toward **LOCK**.

### CONNECTING AC POWER TO THE SCANNER

The scanner uses the supplied 12V, 1250-mA AC adapter for power.

#### Cautions:



You must use a Class 2 power source that supplies 12V DC and delivers at

least 1250 mA. Its center tip must be set to positive and its plug must fit the scanner's **DC 12V** jack. The supplied adapter meets these specifications. Using an adapter that does not meet these specifications could damage the scanner or the adapter.

- Always connect the AC adapter to the scanner before you connect it to AC power. When you finish, disconnect the adapter from AC power before you disconnect it from the scanner.

Plug the AC adapter's barrel plug into the **DC 12V** jack on the back of the scanner, then plug the other end of the AC adapter into a standard AC outlet. The indicator on the front of the scanner lights, indicating that the scanner is turned on.

**Note:** The scanning lamp under the scanner's glass automatically remains lit so you do not have to warm up the scanner each time you want to scan. To conserve electricity and prolong the scanner's life, the lamp automatically turns off after a while.

### INSTALLING THE SCANNER'S SOFTWARE/ HARDWARE

To use your new scanner, you must install the supplied PaperPort software on your computer then connect the scanner to the computer.

The PaperPort software includes installation files and a User's Guide. This guide provides more detailed information about the PaperPort software's features. You can read the guide while the CD is running, or print a copy directly from your hard drive to your printer. To read the guide, click **Start, Programs**, then **PaperPort**.

You do not need to turn off the computer before connecting or disconnecting your scanner.



Follow these steps to install the PaperPort software on your computer.

1. Start Windows 98 and quit all applications.
2. Insert the PaperPort software CD into your CD-ROM drive. The CD starts automatically.

**Note:** If the PaperPort CD does not start automatically, make sure the CD-ROM's door is completely shut. If the CD still does not start, the auto run option on your computer might be turned off. If this happens, click *My Computer*. The window shows the available drives on your computer. Then double-click the icon for your CD-ROM drive and double-click *setup.exe*. The CD starts.

3. Follow the instructions that appear. When you are prompted to do so, plug one end of the supplied cable into your computer's USB port.

#### Notes:

- The supplied cable fits only one way. If it does not insert easily, do not force it.
  - Refer to your computer's owner's manual for the location of the USB port.
  - Some new computers also have a keyboard with a built-in USB port. You can plug the scanner's cable into the keyboard instead of the computer.
4. Plug the other end of the supplied cable into the USB port on the back of the scanner.

5. After you finish installing the software, restart your computer.

**Note:** Once the scanner is working, you can install the other applications provided with the CD.

## VERIFYING SUCCESSFUL CONNECTION

After you successfully install the scanner, the scanner icon appears at the bottom right corner of the Windows taskbar. The indicator on top of the scanner turns green when the scanner and computer communicate.



If the scanner icon appears with an X through it instead, the scanner is not properly connected. See "Troubleshooting" on Page 19 for more information.



Follow these steps to confirm if the scanner has been successfully connected.

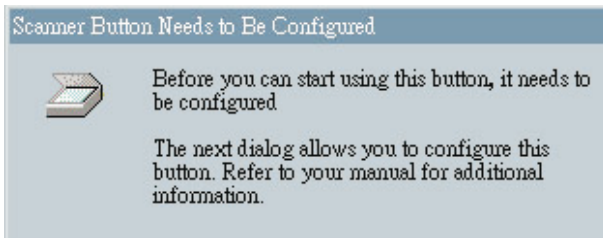
1. Right-click the scanner icon on the Windows taskbar. The shortcut menu appears.
2. Click **About**. A dialog box appears, confirming your scanner's settings.
3. Click **OK** to close the dialog box. Your scanner is ready to scan.

## □ **Default Button Settings**

You can configure the scanner's buttons to perform different functions. See "Changing a Scanner Button's Settings" on Page 15). The default settings are:

| Button                  | Destination                                                                         | Scan Setting                                        | Resolution (DPI)                               |
|-------------------------|-------------------------------------------------------------------------------------|-----------------------------------------------------|------------------------------------------------|
| <b>STOP/<br/>CANCEL</b> | Cancels the scan in progress.                                                       | None                                                | None                                           |
| <b>CUSTOM</b>           | Converts scanned text to word processing text in Windows Notepad.                   | None                                                | None                                           |
| <b>FAX</b>              | Displays the scanned object in fax application software installed on your computer. | Black and white                                     | Your fax machine's default resolution.         |
| <b>COPY/<br/>PRINT</b>  | Prints the scanned object on printer or copier.                                     | Black and white                                     | Your printer's or copier's default resolution. |
| <b>SCAN</b>             | Displays the scanned object in a PaperPort window.                                  | 8 <sup>1</sup> / <sub>2</sub> × 11 inch color photo | 100                                            |

**Note:** If a button is not pre-configured (for example, if your computer does not have fax software installed so **FAX** cannot be pre-configured), a dialog box appears to remind you to configure that button manually.



---

---

## □ Operation

You can operate the scanner using the buttons on the front of the scanner, from your computer screen, or using the supplied PaperPort program.

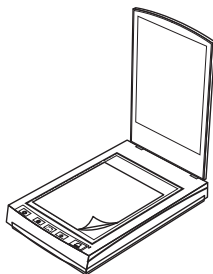
### GETTING HELP

The supplied software includes help information which describes each feature of the software and answers questions about how to configure the buttons for the best scanning result.

To view help, click **Help** on the *USB Scanner Utility Preferences* dialog box or on the other dialog boxes you use to select options for the buttons.

### USING THE SCANNER'S BUTTONS

To scan a document using the buttons on the front of the scanner, open the scanner's top cover and place the document facedown on the glass. Then close the cover and press **SCAN**.



The scanner starts scanning the document, **Scan: PaperPort Desktop** appears, and a window displays the scanning progress.

**Note:** If you are using the scanner for the first time or if it has not warmed up yet, the scanner automatically warms itself up for about 45 seconds before

scanning. A confirmation message appears while the scanner is warming up.

When the scan is complete, the scanned image is transmitted to the preset destination or a destination you select (see "Default Button Settings" on Page 10).

### USING THE SCANNER ICON

Operating the scanner from the screen is just like pressing a scanner button, except you click the button on the screen. This scanning method is especially helpful if the scanner is not located close to your computer.

Follow these steps to scan using the scanner icon on the screen.

1. Open the document cover and place the object to scan facedown on the glass. Then close the cover.
2. Click the scanner icon on the Windows taskbar. The *USB Scanner Utility* dialog box appears.
3. Click **Scan**. The scanner starts scanning the object, a message appears just above the Windows taskbar, and a window shows the scanning progress.
4. When the scanner has finished scanning, it sends the image either to the printer to print, or to another program you have loaded on your computer, depending on the current software settings.

# USING THE SUPPLIED PAPERPORT SOFTWARE

Instead of using the scanner's buttons, you can use the supplied PaperPort software to control your scanner. This is useful when you are using PaperPort to file and save your scanned objects.

**Note:** You can also install and use other scanning software, including many graphics and imaging applications, with your scanner. The software must meet Twain standards.

Follow these steps to scan using the supplied PaperPort software.

1. If the PaperPort software is not currently running, double-click the PaperPort icon on the Windows desktop to start it. The PaperPort desktop appears. You can use this window to select and work with scanned images. The links at the bottom of the desktop let you link images you scan to other software installed on your computer.

**Note:** If you need more information about the PaperPort desktop, click **Help**.

2. From the File menu, click on **Select Source**. The *Select Source* dialog box appears.



3. If necessary, click on **USB Scanner**. Then click **Select**.

**Note:** You only need to follow Steps 1–3 once unless you change the source to another Twain device such as a digital camera.

4. Click the **Twain** icon on the PaperPort command bar. A window appears, letting you preview the scanned image. Make any adjustments, then scan the final image.
5. Open the document cover and place the object to scan facedown on the glass. Then close the cover.

6. Click **Preview**. The scanner scans the object and displays a preview using the options you selected.
7. Review the image to make sure it is what you want. Readjust the settings if necessary.
8. To see a preview again before scanning the final image, click **Preview**.
9. When you are satisfied with the image settings, click **Scan**.

The scanner starts scanning the object, and a progress bar appears showing the percentage completed.

When the scan is complete, the scanned image appears in the destination software.

## USING THE TWAIN BUTTON

Instead of using the scanner's buttons or PaperPort software, you can use the supplied Twain software to control your scanner. This lets you scan many types of objects, from small business cards to A4-sized pages.

**Note:** Your scanner is initially set to scan from the PaperPort software with the setting **Color Document—Faster**. To scan a black-and-white image, select one of the other settings. To scan at a higher resolution for a color image, select **Color Document—Better Quality**. However, scanning at a higher resolution creates a larger file size and takes longer to scan. To minimize the file size and the time required to get a better quality scan, select just the area of the object that you want to scan.

Follow these steps to scan using the Twain button.

1. Open the document cover and place the object to scan facedown on the glass. Then close the cover.
2. If the PaperPort software is not currently running, double-click the PaperPort icon on the Windows desktop to start it. The *PaperPort Desktop* appears.
3. Click the **Twain** icon on the command bar or click **Acquire** on the **File** menu. The *USB Scanner* dialog box appears.
4. Adjust the desired Twain options.

**Note:** When scanning from other Twain software, choose **Acquire** or **Scan** from the **File** menu. Other Twain software will usually not have a **Twain** button.

*Scan Page For* — Select one of these preset options if you want to use it for scanning. These options are optimized for the various uses of scanned images, such as scanning for editing text or scanning in color. For more information about these settings, see “Pre-Defining Scan Settings” on Page 17. If you do not want to use one of these preset options, you can manually select the scan configuration options. Note that when you select a preset option, scan configuration settings are for that preset option. You can also create your own custom configurations. See the Help information for details.

**Scan Configuration** — Use this section of the dialog box to manually select scan options for the image.

**Mode** — From left to right, the three modes are color, grayscale, and black and white. The same symbols next to the preset options indicate their mode setting. Click a mode to select it for the scan.

**Res** — This is the resolution setting for the scan in dots-per-inch (DPI). The higher the DPI, the sharper the image. But higher DPI settings also produce larger files sizes. Usually the higher resolution settings are used for precision work, such as photographs or fine artwork. Click the drop-down arrow and choose one of the resolution settings from the list.

**Size** — The page size for the image. If you want to use one of those preset sizes, click the drop-down arrow and choose the size from the list. If you want to create a custom size, click on the picture window and drag the mouse. A dotted box on the window indicates the page size, and the two number boxes (with the vertical and horizontal symbols next to them) show the actual page size in inches. You can also enter the vertical and horizontal sizes in those two number boxes.

**AutoCrop** — Select this option to let the scanner automatically determine the size of the object being scanned. For example, if you put a photo in the middle of the glass, the scanner will automatically determine the size of the photo. When

AutoCrop is selected, the scanner makes two passes. The first pass senses the object's size and the second pass scans the image.

**Note:** This option overrides any selections you make using **Size**.

**Adv. Setting** — Click this button to see advanced settings for scanning. See the Help information for details about the advanced settings.

**Note:** For more details about the Scan Manager's features, choose **PaperPort Help Topics** from the **Help** menu.

5. Click **Preview**. The scanner scans the object and displays a preview using the options you selected.
6. Review the image to make sure it is what you want. Then select the portion of the image you want to scan or adjust the settings if necessary.
7. To see a preview again before scanning the final image, click **Preview**.
8. When you are satisfied with the image settings, click **Scan**.

The scanner now re-scans the object and displays the final image as a thumbnail on the PaperPort Desktop.

See the *PaperPort User's Guide* and *Working with PaperPort* for more information about using the PaperPort software.

---

---

# □ **Configuring the Scanner**

## **CHANGING A SCANNER BUTTON'S SETTINGS**

You can change the setting of any of the scanner's buttons using the *USB Scanner Utility Preferences* dialog box. This dialog box displays a list of options and settings for customizing the scanner.

Follow these steps to change a scanner button's settings.

1. Click the scanner icon on the Windows taskbar. The *USB Scanner Utility Preferences* dialog box appears.
2. Right-click on the name of the scanner button (except **STOP/CANCEL**) you want to view the properties for. A dialog box showing *Scanner Settings for* and the name of the button appear.
3. Click **Edit** to change the button's settings.

**Note:** If you need more information about each button's settings, click **Help**.

## **ADJUSTING SCAN AND PAGE SETTINGS**

If you use a scan configuration that you define yourself, you can adjust that configuration's scan settings and page settings. For example, if the scanned image is too dark, you can adjust the brightness of the scan setting.

**Note:** You can adjust only the settings for the configurations that you define yourself. You cannot change the scan settings or page settings for any of the pre-defined scanning configurations.

Follow these steps to adjust scan and page settings.

1. Hold down any button on the scanner. The *USB Scanner Utility Preferences* dialog box appears. The selected tab on the dialog box corresponds to the button you pressed. You can click the other tabs for the other buttons.

2. In the *Configuration to Use* list, click the configuration you want to adjust.

**Note:** You cannot edit or change pre-defined configurations. To make a change, you must create a new configuration or copy an existing one and give it a new name.

3. If you have not defined a configuration yet, click **New** to create a new one. You can also select one of the pre-defined configurations then click **Copy** to copy it.

4. Click **Edit**. A dialog box appears.
5. Enter a name for the new configuration.
6. Adjust the desired scanning options.

*Mode* — Select **Black/White** to scan in black and white. For example, letters and memos are usually

scanned in black and white. Select **Grayscale** to scan objects containing drawings or black-and-white photographs. The scanning produces an image in varying shades of gray. Select **Color** to scan color photographs and other color objects.

*Resolution* — Drag the slider to the right or left to adjust the dots per inch (DPI) of the resolution. The maximum resolution is 600 DPI, the minimum is 50 DPI. The higher the DPI setting, the sharper and clearer the scanned image. However, higher DPI settings take longer to scan and produce larger files for the scanned images.

*Brightness and Contrast* — Drag the sliders to the right or left to adjust the brightness and contrast of the scanned image.

7. Click the **Page Settings** tab to adjust the scanning page settings.
8. Adjust the desired page settings.

*Page Size* — Choose one of the page sizes from the drop-down list. The outlines on the picture represent the various page sizes. Clicking on one of those outlines also selects it as the page size for the scan. If you select the **Custom** option from the drop-down list, boxes appear in place of the picture. Enter the horizontal and vertical page dimensions for your scan in those boxes.

*AutoCrop* — Select this option to let the scanner automatically determine the size of the object being scanned. For example, if you put a

photo in the middle of the glass, the scanner will automatically determine the size of the photo. When **AutoCrop** is selected, the scanner makes two passes — the first pass senses the object's size, and the second pass scans the image. This option overrides the **Page Size** menu selection.

*DeScreen* — Select this option when scanning a picture from a newspaper or magazine article, or another object that contains images with patterns or dots. Scans of patterns or dots sometimes have a distorted or wavy appearance. The scanner scans the object to compensate for the patterns and dots, and produces a clearer image. The scanning may slow down a bit when this option is selected. Do not select this option when scanning photographs.

*Gamma* — Drag the slider to improve how the colors in a scanned image look on your monitor. Gamma correction allows you to achieve precise color matching. Because the computer cannot always transmit the exact color information to the hardware, you may have to make some color adjustments using the Gamma feature.

The default Gamma setting works fine in most cases and normally does not need to be adjusted.

9. Click **Close**. The *USB Scanner* dialog box reappears. The new configuration and its adjusted settings now apply to the button.



**Note:** If you click **COPY/PRINT** or **FAX**, the dialog box for editing and adjusting the settings will have a Device tab for selecting options for a printer or copier. See the Help menu for more information.

## PRE-DEFINING SCAN SETTINGS

Selecting the proper scan setting before final scanning provides the best results. The scan setting determines the sharpness of the object and the number of possible shades of gray or color. Scan settings also affect the speed of the scan and the file size.

The following table shows the pre-defined scan settings you can use.

| Scan Setting                 | Default Setting          | To Scan                                                                                                   | Description                                                                                                                                                                         |
|------------------------------|--------------------------|-----------------------------------------------------------------------------------------------------------|-------------------------------------------------------------------------------------------------------------------------------------------------------------------------------------|
| Faxing, Filing, or Copying   | Black and white, 200 DPI | Newspaper and magazine articles, receipts, forms, and other text objects                                  | Provides the fastest scan time and smallest file size.                                                                                                                              |
| Editing Text (OCR)           | Black and white, 300 DPI | Business letters, contracts, memos, and other documents you want to edit                                  | Enhances the use of OCR software for converting object text to editable text. Provides higher quality and larger file size than the <i>Faxing, Filing, or Copying</i> scan setting. |
| Black-and-White Photo        | Grayscale, 100 DPI       | Black-and-white photos                                                                                    | Provides the best setting for black-and-white photos                                                                                                                                |
| Color Photo — Faster         | Color, 100 DPI           | Color pages with many graphics, or mixed graphics and text, line art, or photos that require a quick scan | Creates a quality scanned color object in a file that is not too large. PaperPort's default setting.                                                                                |
| Color Photo — Better Quality | Color, 200 DPI           | Photos and color objects                                                                                  | Provides the ideal setting for color objects, object editing, desktop publishing, and high-quality output. Results in a color scan with slower scan time and larger file size.      |

# ADJUSTING BRIGHTNESS AND CONTRAST

**Note:** See the **Help** menu for more details about the *Advanced Settings* dialog box.


The scanner's *Advanced Settings* let you adjust a scanned object's brightness and/or contrast as desired. For example, you can improve legibility of a black-and-white document written with a light pencil by adjusting brightness to be darker. You can adjust the brightness and contrast while scanning the object's grayscale and/or color. If an object is currently displayed in the preview area, the changes you make using the Brightness and Contrast control bars are reflected in the previewed object.

Follow these steps to adjust brightness and contrast.

1. Start the PaperPort software.
2. Click the **Twain** icon on the command bar or click **Acquire** on the File menu. The *USB Scanner* dialog box appears.
3. Click **Adv. Setting** on the *USB Scanner* dialog box. The *Advanced Settings* dialog box appears.
4. Click **User defined** to change the settings.
5. Drag the **Brightness** slider to the left to make the scanned object darker, or to the right to make the scanned object lighter. When you release the mouse button, the change is reflected in the preview object.
6. Drag the **Contrast** slider to the left to decrease the contrast or to the right to increase the contrast for the scanned object.

# □ Troubleshooting

If your scanner is not working as it should, these suggestions might help you eliminate the problem. If the scanner still does not operate properly, take it to your local RadioShack store for assistance.

| Problem                                                                                                          | Possible Cause                                                                                        | Remedy                                                                                                                                                                                                                  |
|------------------------------------------------------------------------------------------------------------------|-------------------------------------------------------------------------------------------------------|-------------------------------------------------------------------------------------------------------------------------------------------------------------------------------------------------------------------------|
|  appears in the Windows taskbar. | The scanner's cable is not securely connected or was disconnected then reconnected.                   | Make sure the scanner's cable is securely connected. Then right-click the scanner icon on the Windows taskbar and select <b>Connect</b> .                                                                               |
|                                                                                                                  | The AC adapter is not connected or is connected incorrectly.                                          | Make sure the AC adapter is securely connected.                                                                                                                                                                         |
|                                                                                                                  | The computer was not restarted after installing the PaperPort software.                               | Restart your computer.<br><br><b>Note:</b> The readme file in the PaperPort directory included with the supplied software provides additional information that might help you diagnose problems connecting the scanner. |
|                                                                                                                  | The scanner might be locked.                                                                          | Unlock the scanner (see "Locking/Unlocking the Scanner" on Page 8).                                                                                                                                                     |
| Scanned images you work with using some of the PaperPort desktop's links look grainy or too light.               | Some of the links default to 96 DPI, which might be too grainy or light for some linked applications. | Select the <b>Link Preferences</b> window from the <b>Edit</b> menu in the <i>PaperPort Desktop</i> , then uncheck <i>Convert Images to Screen Resolution (96 DPI)</i> to disable it.                                   |
| Power indicator does not light.                                                                                  | The AC adapter is not connected or is connected incorrectly.                                          | Make sure the AC adapter is securely connected.                                                                                                                                                                         |

---

---

## **Care and Maintenance**

Your RadioShack USB Flatbed Color Scanner is an example of superior design and craftsmanship. The following suggestions will help you care for your scanner so you can enjoy it for years.



Keep the scanner dry. If it gets wet, wipe it dry immediately. Liquids might contain minerals that can corrode the electronic circuits.



Use and store the scanner only in normal temperature environments. Temperature extremes can shorten the life of electronic devices and distort or melt plastic parts.



Keep the scanner away from dust and dirt, which can cause premature wear of parts.



Handle the scanner gently and carefully. Dropping it can damage circuit boards and cases and can cause the scanner to work improperly.



Wipe the scanner with a damp cloth occasionally to keep it looking new. Do not use harsh chemicals, cleaning solvents, or strong detergents to clean the scanner.

Modifying or tampering with the scanner's internal components can cause a malfunction and might invalidate its warranty. If your scanner is not performing as it should, take it to your local RadioShack store for assistance.

---

---

# □ *Specifications*

|                                                    |                                                                                                                                 |
|----------------------------------------------------|---------------------------------------------------------------------------------------------------------------------------------|
| Bit Depth .....                                    | 36-Bit Color (24-bit output)                                                                                                    |
| 12-Bit Grayscale .....                             | 1-Bit Line Art                                                                                                                  |
| Scanning Resolution .....                          | Optical Resolution: 600 × 1200 DPI                                                                                              |
| Maximum Resolution (interpolated) .....            | 2400 × 2400 DPI                                                                                                                 |
| Maximum Scanning Size .....                        | 8.5 × 11.60 Inches (21.6 × 29.7 cm) (A4 letter)                                                                                 |
| Operating Systems .....                            | Windows 98                                                                                                                      |
| Operating Temperature (without condensation) ..... | 41° to 104°F (5° to 40°C)                                                                                                       |
| Relative Humidity .....                            | 20% to 80% at 95°F (35°C) without condensation                                                                                  |
| Input Voltage .....                                | 120V AC, 60 Hz                                                                                                                  |
| Output Voltage .....                               | 12V DC, 15 Watt Max.                                                                                                            |
| Safety and Agency Certifications .....             | UL, GS, FCC Class B, VCCI Class 2, CE                                                                                           |
| Dimensions (HWD) .....                             | 3 <sup>3</sup> / <sub>8</sub> × 11 <sup>7</sup> / <sub>16</sub> × 17 <sup>5</sup> / <sub>16</sub> Inches (8.5 × 29.0 × 44.0 cm) |
| Weight .....                                       | 6.4 lb (2.9 kg)                                                                                                                 |
| Accessories .....                                  | USB Cable, AC Adapter, Software CD                                                                                              |

Specifications are typical; individual units might vary. Specifications are subject to change and improvement without notice.

---

---

# **Notes**



### **Limited Ninety-Day Warranty**

This product is warranted by RadioShack against manufacturing defects in material and workmanship under normal use for ninety (90) days from the date of purchase from RadioShack company-owned stores and authorized RadioShack franchisees and dealers. EXCEPT AS PROVIDED HEREIN, RadioShack MAKES NO EXPRESS WARRANTIES AND ANY IMPLIED WARRANTIES, INCLUDING THOSE OF MERCHANTABILITY AND FITNESS FOR A PARTICULAR PURPOSE, ARE LIMITED IN DURATION TO THE DURATION OF THE WRITTEN LIMITED WARRANTIES CONTAINED HEREIN. EXCEPT AS PROVIDED HEREIN, RadioShack SHALL HAVE NO LIABILITY OR RESPONSIBILITY TO CUSTOMER OR ANY OTHER PERSON OR ENTITY WITH RESPECT TO ANY LIABILITY, LOSS OR DAMAGE CAUSED DIRECTLY OR INDIRECTLY BY USE OR PERFORMANCE OF THE PRODUCT OR ARISING OUT OF ANY BREACH OF THIS WARRANTY, INCLUDING, BUT NOT LIMITED TO, ANY DAMAGES RESULTING FROM INCONVENIENCE, LOSS OF TIME, DATA, PROPERTY, REVENUE, OR PROFIT OR ANY INDIRECT, SPECIAL, INCIDENTAL, OR CONSEQUENTIAL DAMAGES, EVEN IF RadioShack HAS BEEN ADVISED OF THE POSSIBILITY OF SUCH DAMAGES.

Some states do not allow limitations on how long an implied warranty lasts or the exclusion or limitation of incidental or consequential damages, so the above limitations or exclusions may not apply to you.

In the event of a product defect during the warranty period, take the product and the RadioShack sales receipt as proof of purchase date to any RadioShack store. RadioShack will, at its option, unless otherwise provided by law: (a) correct the defect by product repair without charge for parts and labor; (b) replace the product with one of the same or similar design; or (c) refund the purchase price. All replaced parts and products, and products on which a refund is made, become the property of RadioShack. New or reconditioned parts and products may be used in the performance of warranty service. Repaired or replaced parts and products are warranted for the remainder of the original warranty period. You will be charged for repair or replacement of the product made after the expiration of the warranty period.

This warranty does not cover: (a) damage or failure caused by or attributable to acts of God, abuse, accident, misuse, improper or abnormal usage, failure to follow instructions, improper installation or maintenance, alteration, lightning or other incidence of excess voltage or current; (b) any repairs other than those provided by a RadioShack Authorized Service Facility; (c) consumables such as fuses or batteries; (d) cosmetic damage; (e) transportation, shipping or insurance costs; or (f) costs of product removal, installation, set-up service adjustment or reinstallation.

This warranty gives you specific legal rights, and you may also have other rights which vary from state to state.

RadioShack Customer Relations, 200 Taylor Street, 6th Floor, Fort Worth, TX 76102

*We Service What We Sell*

12/99



## Free Manuals Download Website

<http://myh66.com>

<http://usermanuals.us>

<http://www.somanuals.com>

<http://www.4manuals.cc>

<http://www.manual-lib.com>

<http://www.404manual.com>

<http://www.luxmanual.com>

<http://aubethermostatmanual.com>

Golf course search by state

<http://golfingnear.com>

Email search by domain

<http://emailbydomain.com>

Auto manuals search

<http://auto.somanuals.com>

TV manuals search

<http://tv.somanuals.com>