

Ricoh Aficio SP C231SF/SP C232SF
Desktop Color Laser MFP
Essential Features, Maximum Value

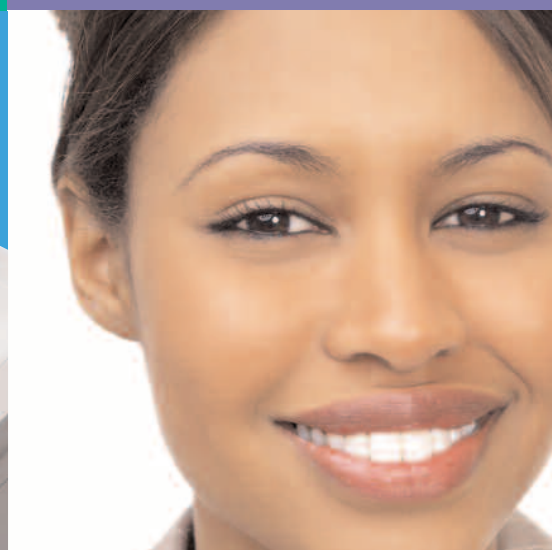
RICOH



robust



easy



all-in-one

Ricoh Aficio SP C231SF/SP C232SF

Multitasking Made Easy

What will you print, copy, scan or fax today? The RICOH® Aficio® SP C231SF/SP C232SF Desktop Color Laser Multifunction Printer (MFP) allows you to be expressive with your communications while using a single solution featuring All-In-One (AIO) print cartridge technology to do it all. Add rich, vivid colors to a wide range of business documents at an affordable price that will make your competitors green with envy and won't put your budget in the red.



EasyEfficientAffordablePowerful

Full-Featured Multifunctionality

The network-ready Ricoh Aficio SP C231SF/SP C232SF is packed with features and functions to handle every job with maximum productivity and superior image quality.

- Copy and print at equal speeds of up to 21 pages-per-minute for both full-color and black & white documents to get more done in less time.
- Print eye-catching color pages and crisp text at resolutions up to 2400 x 600 dpi.
- Capture and edit full-color images for use in other documents, transform hardcopy originals into digital files for archival or distribution or convert scanned data to editable text with built-in TWAIN/WIA scanning.
- Stay connected to customers, suppliers and business partners outside the network with Super G3 faxing.
- Control page volumes and system access with a User Restriction feature, and keep confidential information secure using Locked Print.



All-In-One print cartridges make color affordable and install quickly for maximum uptime and do-it-yourself convenience.

Maximum Efficiency at Minimal Cost

The Ricoh Aficio SP C231SF/SP C232SF Color Laser Desktop MFP is equipped with a host of features designed to minimize total cost of ownership and maintenance tasks.

- Improve workflow with the 35-sheet Automatic Document Feeder. It quickly scans originals as large as 8.5" x 14" to speed multi-page copying, scanning and faxing.
- Reduce paper use, filing space and postage costs with standard automatic duplex printing.
- Combine multiple images onto a single sheet with ID Card and N-in-1 copy mode features to save paper and time.
- Leverage the power of your network to speed communications with a full suite of cost-free Scan-to document distribution capabilities. Share information instantly with Scan-to-Email, post files for local sharing with Scan-to-Folder, enable remote team-based project collaboration with Scan-to-FTP, and edit scanned documents with Scan-to-OCR.
- Stop printing cover sheets and hardcopy originals before faxing. Use the PC Fax feature to send documents right from a Windows computer for paperless faxing!
- Make color affordable for every job and operate more efficiently with high-yield All-In-One print cartridges for less interruption and lower per-page costs.
- Choose from two controller types to match your workflow requirements to the most affordable solution.



Doctors' offices, labs, front desks, rental agencies, schools, and many others will appreciate the time- and paper-saving ID Card copy mode.

Big Design for Small Spaces

The Ricoh Aficio SP C231SF/SP C232SF is a four-in-one solution that occupies less than 20 square inches of desk space. An intuitive control panel, user-replaceable AIO cartridge technology, and fast warm-up and first print/copy times ensure this MFP will always be ready when you are.

- Boost paper supply to 751 sheets without increasing footprint.
- Replace the mess-free All-In-One print cartridges in seconds. The top-loading design makes maintenance a snap.
- Eliminate dialing errors and quickly send faxes to frequent recipients with 20 One-Touch keys.
- Enjoy highly reliable media feeding with the short, soft-curved paper path, while the total front access design enables fast clearance for optimal performance.
- Streamline device and document management tasks from connected PCs using the bundled Ricoh Web Image Monitor utility and Presto! PageManager software.

The Total Green Office Solution



Ricoh continues its long-standing commitment to developing office solutions with environmentally friendly and superior energy- and supply-saving features, without compromising productivity.

Ricoh Aficio SP C231SF/SP C232SF

Specifications

Aficio®

Engine Specifications

Aficio SP C231SF	Part # 406442
Aficio SP C232SF	Part # 406443
Configuration Technology	Desktop
Reading Element	Flatbed with CCD array image sensor
Print Processing	Laser beam scanning & electro-photographic printing with mono-component toner development
Print Resolution	4-drum tandem method 600 x 600 dpi (Speed mode) 1200 x 600 dpi equivalent (Standard Mode) 2400 x 600 dpi equivalent (Fine Mode)
Output Speed (Letter)	21 pages-per-minute in B&W and Full-Color
First Print Speed	14 seconds or less
Warm-Up Time	48 seconds or less
Copy Resolution	Max. 600 x 600 dpi
Original Type	Sheets/Books/3D objects
Platen Glass	Maximum Scanning Size: 8.5" x 11.7"
Document Feeder	Standard 35-sheet Automatic Document Feeder Paper Size: (Width: 5.5" – 8.5", Length: 5.5" – 14") Paper Weight: 14 – 28 lb. Bond (52 – 105 g/m ²) 250-sheet Tray, 1-sheet Bypass Tray
Standard Paper Capacity	500-sheet Paper Feed Unit
Optional Paper Capacity	751 sheets
Maximum Input Paper Capacity	150 sheets (face down)
Output Capacity	Standard
Automatic Duplex Paper Sizes	Standard Tray and Bypass Tray: Letter (8.5" x 11"), A4 (8.3" x 11.7"), EXE (7.25" x 10.5"), B5 (6.9" x 9.8"), Legal (8.5" x 14"), Custom (Width: 3.6" – 8.6", Length: 5.9" – 14.24") Optional Paper Feed Unit: Letter (8.5" x 11"), A4 (8.3" x 11.7")
Paper Weight	Standard Tray and Bypass Tray: 16 – 40 lb. Bond/83 lb. Index (60 – 160 g/m ²) Optional Paper Feed Unit: 16 – 28 lb. Bond (60 – 105 g/m ²)
Acceptable Paper Types	Standard Tray and Bypass Tray: Plain Paper, Recycle Paper, Envelopes, Glossy Paper, Thick Paper & Labels Optional Paper Feed Unit: Plain Paper, Recycle Paper
Dimensions (WxDxH)	16.54" x 19.41" x 18.74" (420 x 493 x 476 mm)
Weight	66.14 lb. (30 kg or less)
Power Requirements	120V, 60Hz
Maximum Power Consumption	1,300W
Energy Saver Mode	SP C231SF: 20W SP C232SF: 25W
Safety Regulations	UL60950-1 First Edition, CSA-22.2 No. 60950-1-03 First Edition, Energy Star: Color Multifunction Printer – Tier 1

Print Controller Specifications

CPU	400MHz
Printer Languages	SP C231SF: DDST (GDI) SP C232SF: PCL 5c/6, PostScript 3 emulation
Fonts	SP C231SF: None (Host-based) SP C232SF: 80 fonts

Memory (RAM)	SP C231SF: 128 MB RAM standard/maximum SP C232SF: 256 MB RAM standard/512 MB RAM maximum (shared)*
*128 MB RAM is devoted to PDLs and other functions.	
Standard Interfaces	USB 2.0, 10/100Base-TX Ethernet
Optional Interface**	IEEE 802.11b/g Wireless
Network Protocols	TCP/IP, IPP
Operating Systems	Windows 2000/XP/Server 2003/Vista/Server 2008 Mac OS X v.10.2.8 – 10.5 Citrix MetaFrame UNIX (using Ricoh UNIX filter)
Drivers	DDST: Windows 2000/XP/Vista/Server 2003/Server 2008 Mac OS X v.10.2.8 – 10.5 PCL 5c/6: Windows 2000/XP/Vista/Server 2003/Server 2008 PS3 emulation: Windows 2000/XP/Vista/Server 2003/Server 2008 Mac OS X v.10.2.8 – 10.5
Software Utilities	Web Image Monitor Presto! PageManager

**Please note the Wireless Option and 10/100Base-TX cannot operate simultaneously.

Controller Options

256 MB RAM Memory Unit Type F (SP C232SF only)	Part # 003310MIU
Wireless Adaptor SX-2500CG	Part # 100118FNG

Copier Specifications

First Copy Speed	30 seconds (for both B&W and Full-Color)
Single Page Doc/ Multiple Copies	21 copies-per-minute in B&W and Full-Color
Multi-page Doc/ Single Copy	20 copies-per-minute in B&W 10 copies-per-minute in Full-Color
Quantity Indicator Zoom	1 – 99
Reduction Ratios	25% – 400% in 1% increments
Enlargement Ratios	50%, 65%, 78%, 93%
Copier Features	129%, 155%, 200%, 400% Image Density Adjustment Copy Mode (Text/Photo/Mixed) Color Density Adjustment Combine Copy (2-in-1, 4-in-1, ADF only) Duplex Copy ID Card Copy Memory Copy Electronic Sorting (collation, ADF only)

Scanner Specifications

Scanning Modes	Full-Color and 256-level grayscale scanning
Scanning Resolution	Scanner: Up to 1200 x 1200 dpi (optical) Driver: Up to 19200 x 19200 dpi (interpolated)
Scanning Speed	B&W: Less than 5 seconds-per-page (LTR @ 300 dpi) Full-Color: Less than 10 seconds-per-page
Scan Area	Via Platen: Up to 8.5" x 11.7" (216 – 297 mm) Via ADF: Up to 8.5" x 14" (216 – 356 mm)
Utilities & Drivers Protocol Supported	TWAIN Driver, Presto! PageManager TCP/IP, SMB
File Formats Supported	TIFF, PDF, JPEG
Scanning Features	TWAIN/WIA Scan-to-Email Scan-to-Folder Scan-to-FTP Scan-to-OCR

Facsimile Specifications

Circuit	PSTN, PABX
Compatibility	ITU-T Group 3
Resolution	Standard Mode: 200 x 100 dpi Fine Mode: 200 x 200 dpi MH/MR/MMR
Compression Method	Less than 5 seconds-per-page
Scanning Speed	33.6 Kbps with automatic fallback
Modem Speed	G3: 3 seconds-per-page
Transmission Speed*	Up to 100 pages
Memory	1 hour
Memory Backup	20 One-Touch/50 Speed Dials
One-Touch/Speed Dials	
Facsimile Features	Auto Redial (after 5 minutes) Auto Answer (1 – 5 rings) Auto/Manual/Substitute Reception Answering Machine Interface Error Correction Mode Image Reduction Memory/Immediate Transmission PC Fax (Windows only) Serial Broadcasting (100 locations) Smoothing

*Based on ITU-T Test Chart #1 in Standard mode.

Hardware Accessories

Paper Feed Unit Type TK1010	Part # 406019 Paper Size: Letter (8.5" x 11"), A4 (8.3" x 11.7") Capacity: 500 sheets
-----------------------------	---

Consumables

Black All-In-One Cartridge SP C310A	2,500 pages*	Part # 406344
Cyan All-In-One Cartridge SP C310A	2,500 pages*	Part # 406345
Magenta All-In-One Cartridge SP C310A	2,500 pages*	Part # 406346
Yellow All-In-One Cartridge SP C310A	2,500 pages*	Part # 406347
Black All-In-One Cartridge SP C310HA	6,500 pages*	Part # 406475
Cyan All-In-One Cartridge SP C310HA	6,000 pages*	Part # 406476
Magenta All-In-One Cartridge SP C310HA	6,000 pages*	Part # 406477
Yellow All-In-One Cartridge SP C310HA	6,000 pages*	Part # 406478
Waste Toner Bottle Type 220	25,000 pages	Part # 406043

*Declared yield value in accordance with ISO/IEC 19798; actual yields vary based on images printed and other factors.

The Ricoh Aficio SP C231SF and SP C232SF ship with starter All-In-One print cartridges that yield 1,000 pages. All other consumables ship at full yield.

For maximum performance and yield, we recommend using genuine Ricoh parts and supplies.

Specifications subject to change without notice.

Warranty

The Ricoh Aficio SP C231SF/SP C232SF is under warranty against defects for a period of one year from the date of purchase. Consumables are under warranty for a period of 90 days from the date of purchase or until depleted, whichever comes first. Please refer to the warranty document shipped with the product for more details.

RICOH

www.ricoh-usa.com

Bringing Ricoh Value to Your Organization

Ricoh technology offers a diverse portfolio of solutions to help your organization stay competitive and move ahead. Let Ricoh show you how to empower your business to improve critical processes, keep information secure, ensure compliance and promote environmental sustainability while reducing the total cost of ownership.

Ricoh Americas Corporation, Five Dedrick Place, West Caldwell, NJ 07006
RicoH® and the Ricoh Logo are registered trademarks of Ricoh Company, Ltd. All other trademarks are the property of their respective owners. Print speed may be affected by network, application or PC performance. Specifications and external appearances are subject to change without notice. Products are shown with optional features.

R2997



Free Manuals Download Website

<http://myh66.com>

<http://usermanuals.us>

<http://www.somanuals.com>

<http://www.4manuals.cc>

<http://www.manual-lib.com>

<http://www.404manual.com>

<http://www.luxmanual.com>

<http://aubethermostatmanual.com>

Golf course search by state

<http://golfingnear.com>

Email search by domain

<http://emailbydomain.com>

Auto manuals search

<http://auto.somanuals.com>

TV manuals search

<http://tv.somanuals.com>