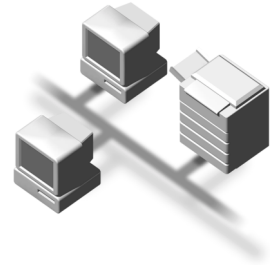




Network Guide



-
- 1 Getting Started
 - 2 Connecting and Setting Up
 - 3 Using a Printer Server
 - 4 Monitoring and Configuring the Printer
 - 5 Special Operations under Windows
 - 6 Appendix

Read this manual carefully before you use this machine and keep it handy for future reference. For safe and correct use, be sure to read the Safety Information in the "General Settings Guide" before using the machine.

Introduction

This manual contains detailed instructions and notes on the operation and use of this machine. For your safety and benefit, read this manual carefully before using the machine. Keep this manual in a handy place for quick reference.

Important

Contents of this manual are subject to change without prior notice. In no event will the company be liable for direct, indirect, special, incidental, or consequential damages as a result of handling or operating the machine.

Software Version Conventions Used in This Manual

- NetWare 3.x means NetWare 3.12 and 3.2.
- NetWare 4.x means NetWare 4.1, 4.11, 4.2 and IntranetWare.

Trademarks

Microsoft®, Windows® and Windows NT® are registered trademarks of Microsoft Corporation in the United States and/or other countries.

Apple, AppleTalk, EtherTalk, Macintosh, Mac OS and TrueType are trademarks of Apple Computer, Inc, registered in the United States and other countries.

Netscape and Netscape Navigator are registered trademarks of Netscape Communications Corporation.

Novell, NetWare, NDS and NDPS are registered trademarks of Novell, Inc.

PostScript® and Acrobat® are registered trademarks of Adobe Systems, Incorporated.

UNIX is a registered trademark in the United States and other countries, licensed exclusively through X/Open Company Limited.

Citrix® and MetaFrame® are registered trademarks of Citrix Systems, Inc.

Bluetooth is a registered trademark of Bluetooth-SIG Inc. worldwide.

UPnP is a trademark of the UPnP Implementers Corporation.

Other product names used herein are for identification purposes only and might be trademarks of their respective companies. We disclaim any and all rights to those marks.

The proper names of the Windows operating systems are as follows:

- The product name of Windows® 95 is Microsoft® Windows 95.
- The product name of Windows® 98 is Microsoft® Windows 98.
- The product name of Windows® Me is Microsoft® Windows Millennium Edition (Windows Me).
- The product names of Windows® 2000 are as follows:
 - Microsoft® Windows® 2000 Professional
 - Microsoft® Windows® 2000 Server
 - Microsoft® Windows® 2000 Advanced Server
- The product names of Windows® XP are as follows:
 - Microsoft® Windows® XP Home Edition
 - Microsoft® Windows® XP Professional
- The product names of Windows Server™ 2003 are as follows:
 - Microsoft® Windows Server™ 2003 Standard Edition
 - Microsoft® Windows Server™ 2003 Enterprise Edition
 - Microsoft® Windows Server™ 2003 Web Edition
- The product names of Windows NT® 4.0 are as follows:
 - Microsoft® Windows NT® Workstation 4.0
 - Microsoft® Windows NT® Server 4.0
- RSA Data Security, Inc. MD5 Message-Digest Algorithm
Copyright© 1991-2, RSA Data Security, Inc. Created 1991. All rights reserved.
License to copy and use this software is granted provided that it is identified as the "RSA Data Security, Inc. MD5 Message-Digest Algorithm" in all material mentioning or referencing this software or this function.
License is also granted to make and use derivative works provided that such works are identified as "derived from the RSA Data Security, Inc. MD5 Message-Digest Algorithm" in all material mentioning or referencing the derived work.
RSA Data Security, Inc. makes no representations concerning either the merchantability of this software or the suitability of this software for any particular purpose. It is provided "as is" without express or implied warranty of any kind.
These notices must be retained in any copies of any part of this documentation and/or software.

TABLE OF CONTENTS

Manuals for This Machine	1
How to Read This Manual	3

1. Getting Started

Functions Available over a Network	5
Printer.....	5
Internet Fax	5
LAN-Fax	6
IP-Fax.....	6
E-mail	6
Scan to Folder	6
Network Delivery Scanner.....	7
Network TWAIN Scanner	7
Document Server	7

2. Connecting and Setting Up

Confirming the Connection.....	9
Connecting to the Ethernet Interface	9
Connecting to the IEEE 1394 Interface	10
Using the IEEE 802.11b (Wireless LAN).....	11
Setting Up the Machine on a Network.....	14
Printer/LAN-Fax	14
Internet Fax	16
IP-Fax.....	19
E-mail	21
Scan to Folder	24
Network Delivery Scanner.....	26
Network TWAIN Scanner	28
Document Server	30
Network Configuration.....	32
Interface Settings	37
File Transfer	42
LDAP Server Settings.....	50
Before using this function	50
Program/Change/Delete LDAP Server	50
Programming the LDAP Server.....	51

3. Using a Printer Server

Preparing Printer Server	57
Printing notification via SmartDeviceMonitor for Client	57
Using NetWare	59
Setting Up as a Print Server (NetWare 3.x)	59
Setting Up as a Print Server (NetWare 4.x, 5/5.1, 6/6.5)	60
Using Pure IP in the NetWare 5/5.1 or 6/6.5 Environment.....	62
Setting Up as a Remote Printer (NetWare 3.x)	64
Setting Up as a Remote Printer (NetWare 4.x, 5/5.1, 6/6.5)	66

4. Monitoring and Configuring the Printer

Using Web Image Monitor.....	69
Displaying Top Page	70
When user authentication is set	71
About Menu and Mode	72
Access in the Administrator Mode.....	74
Displaying Web Image Monitor Help	74
Using SmartDeviceMonitor for Admin	76
Installing SmartDeviceMonitor for Admin	77
Changing the Network Interface Board Configuration.....	77
Locking the Menus on the Machine's Control Panel	78
Changing the Paper Type	78
Managing User Information.....	79
Configuring the Energy Saver Mode	81
Setting a Password	82
Checking the Machine Status	83
Changing Names and Comments	83
Load Fax Journal	84
Viewing and Deleting Spool Print Jobs	85
Managing Address Information	85
Using SmartDeviceMonitor for Client	86
Monitoring Printers	86
Checking the Machine Status	86
When Using IPP with SmartDeviceMonitor for Client	87

Remote Maintenance by telnet	88
Using telnet	88
access	89
appletalk	89
autonet	90
btconfig	90
devicename	90
dhcp	91
diprint	92
dns	92
domainname	93
help	94
hostname	94
ifconfig	95
info	96
ipp	96
netware	96
passwd	97
prnlog	97
rendezvous	98
route	99
set	100
show	101
slp	101
smb	102
snmp	102
sntp	105
spoolsw	105
sprint	106
status	106
syslog	106
upnp	106
web	107
wiconfig	107
wins	110
SNMP	111
Getting Printer Information over the Network	112
Current Printer Status	112
Printer configuration	119
Understanding the Displayed Information	120
Print Job Information	120
Print Log Information	121
Configuring the Network Interface Board	122
Message List	127
System Log Information	127

5. Special Operations under Windows

Printing Files Directly from Windows	133
Setup	133
Using a Host Name Instead of an IP Address	133
Printing Commands	134

6. Appendix

When Using Windows Terminal Service/MetaFrame	137
Operating Environment	137
Supported Printer Drivers	137
Limitations	137
Using DHCP	139
Using AutoNet	140
Precautions	141
Connecting a Dial-Up Router to a Network	141
NetWare Printing	143
When the optional IEEE 802.11b interface unit is installed	144
Information about Installed Applications	145
Samba(Ver 2.2.2-1.1)	145
RSA® BSAFE™	145
Specifications	146
INDEX	148

Manuals for This Machine

The following manuals describe the operational procedures of this machine. For particular functions, see the relevant parts of the manual.

Note

- Manuals provided are specific to machine type.
- Adobe Acrobat Reader is necessary to view the manuals as a PDF file.
- Two CD-ROMs are provided:
 - CD-ROM 1 “Operating Instructions for Printer/Scanner”
 - CD-ROM 2 “Scanner Driver & Document Management Utilities”

❖ **General Settings Guide**

Provides an overview of the machine and describes System Settings (such as Tray Paper Settings), Document Server functions, and troubleshooting. Refer to this manual for Address Book procedures such as registering fax numbers, e-mail addresses, and user codes.

❖ **Security Reference**

This manual is for administrators of this machine. It describes security functions that the administrators can use to protect data from being tampered, or prevent the machine from unauthorized use. Also refer to this manual for the procedures for registering administrators, as well as setting user and administrator authentication.

❖ **Network Guide (this manual)**

Provides information about configuring and operating the printer in a network environment or using software. This manual covers all models, and therefore contains functions and settings that may not be available for your model.

Images, illustrations, functions, and supported operating systems may differ from those of your model.

❖ **Copy Reference**

Describes operations, functions, and troubleshooting for the machine’s copier function.

❖ **Facsimile Reference <Basic Features>**

Describes operations, functions, and troubleshooting for the machine's facsimile function.

❖ **Facsimile Reference <Advanced Features>**

Describes advanced facsimile functions such as line settings and procedures for registering IDs.

❖ **Printer Reference**

Describes system settings, operations, functions, and troubleshooting for the machine’s printer function.

❖ **Scanner Reference (PDF file - CD-ROM1)**

Describes operations, functions, and troubleshooting for the machine's scanner function.

❖ **Manuals for DeskTopBinder**

DeskTopBinder is a utility included on the CD-ROM labeled "Scanner Driver & Document Management Utilities".

- **DeskTopBinder Lite Setup Guide (PDF file - CD-ROM2)**
Describes installation of, and the operating environment for DeskTopBinder Lite in detail. This guide can be displayed from the **[Setup]** dialog box when DeskTopBinder Lite is installed.
- **DeskTopBinder Introduction Guide (PDF file - CD-ROM2)**
Describes operations of DeskTopBinder Lite and provides an overview of its functions. This guide is added to the **[Start]** menu when DeskTopBinder Lite is installed.
- **Auto Document Link Guide (PDF file - CD-ROM2)**
Describes operations and functions of Auto Document Link installed with DeskTopBinder Lite. This guide is added to the **[Start]** menu when DeskTopBinder Lite is installed.

❖ **Other manuals**

- **PS3 Supplement (PDF file - CD-ROM1)**
- **UNIX Supplement (available from an authorized dealer, or as a PDF file on our Web site)**

How to Read This Manual

Symbols

In this manual, the following symbols are used:

* The statements above are notes for your safety.

Important

If this instruction is not followed, paper might be misfed, originals might be damaged, or data might be lost. Be sure to read this.

Preparation

This symbol indicates prior knowledge or preparation is required before operation.

Note

This symbol indicates precautions for operation, or actions to take after mal-operation.

Limitation

This symbol indicates numerical limits, functions that cannot be used together, or conditions in which a particular function cannot be used.

Reference

This symbol indicates a reference.

[]

Keys that appear on the machine's display panel.

Keys and buttons that appear on the computer's display.

[]

Keys built into the machine's control panel.

Keys on the computer's keyboard.

1. Getting Started

Functions Available over a Network

This machine provides printer, LAN-Fax, Internet Fax, and scanner functions over a network. Using the Document Server function, you can combine copied documents and print jobs into a single document. Not only can you print this document straight away, but you can also store it so it can be printed again whenever needed.

Printer

The network interface board is compatible with NetWare ^{*1} (IPX/SPX, TCP/IP), Windows NT 4.0 (TCP/IP, NetBEUI ^{*2}, IPP ^{*3}), Windows 2000 (TCP/IP, NetBEUI ^{*2}, IPP ^{*3}), Windows XP, Windows Server 2003 (TCP/IP, IPP ^{*3}), Windows 95/98/Me (TCP/IP, NetBEUI ^{*2}, IPP ^{*3}), UNIX (TCP/IP), and Mac OS (AppleTalk) protocols. This allows you to operate the machine in a network that uses different protocols and operating systems.

^{*1} If the optional 802.11b interface unit is installed, you can use only infrastructure mode.

^{*2} For NetBEUI, use the SmartDevice-Monitor for Client port.

^{*3} IPP (Internet Printing Protocol) is a protocol for printing via the Internet.

Reference

For details about what settings to make, see p.14 "Setting Up the Machine on a Network".

For details about using this function, see p.57 "Preparing Printer Server", or PostScript 3 Supplement.

Internet Fax

This machine converts scanned document images to e-mail format and transmits the data over the Internet.

Specify the e-mail address instead of the fax number, and then send the document.

E-mail can be received on a fax machine that supports Internet Fax, or on a computer that can receive normal e-mail.

You can also receive e-mails or Internet faxes, and then print or forward them.

Note

To use this function, optional fax unit is required.

Reference

For details about what settings to make, see p.14 "Setting Up the Machine on a Network".

For details about using this function, see "Using Internet Fax Functions", *Facsimile Reference <Basic Features>*.

LAN-Fax

You can fax documents over phone lines from any computer connected to the machine via Ethernet, IEEE 1394 (IP over 1394), or wireless LAN.

To send a fax, print from the Windows application you are working with, select LAN-Fax as the printer, and then specify the destination.

You can also check the sent image data.

 **Note**

- To use this function, optional fax unit is required.

 **Reference**

For details about what settings to make, see p.14 "Setting Up the Machine on a Network".

For details about using this function, see "Sending Fax Documents from Computers", *Facsimile Reference* <Advanced Features>.

IP-Fax

You can send and receive fax documents through fax machines connected directly to the same network using the TCP/IP protocol. Specify the IP address or host name instead of the fax number and then send the document. If Gatekeeper is used, enter the alias telephone number to send the document.

No e-mail server is required, and transmission between IP-fax machine is faster than between G3 fax machine.

You can also check the sent image data.

 **Note**

- To use this function, optional fax unit is required.

 **Reference**

For details about what settings to make, see p.14 "Setting Up the Machine on a Network".

For details about using this function, see "Internet Fax Functions (by Specifying an IP Address)", *Facsimile Reference* <Basic Features>.

E-mail

Scan file attached to an e-mail can be sent using the e-mail system through a LAN or the Internet.

 **Reference**

For details about what settings to make, see p.14 "Setting Up the Machine on a Network".

For details about using this function, see "Sending Scan Files by E-mail", *Scanner Reference*.

Scan to Folder

You can send scan file directly to shared folders on computers running Windows or to FTP servers.

 **Reference**

For details about what settings to make, see p.14 "Setting Up the Machine on a Network".

For details about using this function, see "Sending Scan Files by Scan to Folder", *Scanner Reference*.

Network Delivery Scanner

You can use the machine as a delivery scanner for the ScanRouter delivery software.

Scan file or document received by fax can be stored in the delivery server, or delivered via the network to specified folders on client computers.

Reference

For details about what settings to make, see p.14 "Setting Up the Machine on a Network".

For details about using this function, see "Delivering Scan Files", *Scanner Reference*.

Network TWAIN Scanner

You can use the scanning function of this machine from a computer connected via a network (Ethernet, IEEE 1394(IP over 1394), or IEEE 802.11b (wireless LAN)).

You can scan documents the same way you would if you were using a scanner connected directly to your computer.

Reference

For details about what settings to make, see p.14 "Setting Up the Machine on a Network".

For details about using this function, see "Using the Network TWAIN Scanner Function", *Scanner Reference*.

Document Server

You can store copy, fax, printer, and scanner documents on the hard disk. Using DeskTopBinder Lite or a Web browser, you can browse, print, delete, or copy these documents over a network.

Reference

For details about what settings to make, see p.14 "Setting Up the Machine on a Network".

For more information about Document Server operation from the printer, see "Using the Document Server", *Printer Reference*.

For more information about Document Server operation from the facsimile, see "Using the Document Server", *Facsimile Reference* <*Advanced Features*>.

For more information about Document Server operation from the scanner, see "Using the Document Server", *Scanner Reference*.

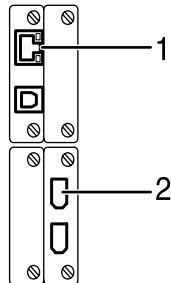
For all information about Document Server operation, see "Using the Document Server", *General Settings Guide*.

For more information about DeskTopBinder Lite, see the manuals for DeskTopBinder Lite.

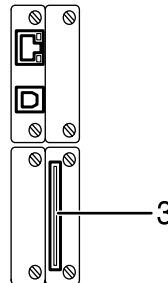
2. Connecting and Setting Up

Confirming the Connection

When the IEEE 1394 interface board (optional) is installed.



When the wireless LAN board (optional) is installed.



ZZZ018S

1. 10BASE-T/100BASE-TX port

Port for connecting the 10BASE-T or 100BASE-TX cable

2. IEEE 1394 ports (optional)

Ports for connecting the IEEE 1394 interface cable

3. Wireless LAN port (optional)

Port for using the wireless LAN

Note

- The optional IEEE 1394 interface board and the IEEE 802.11b interface unit cannot be installed at the same time.
- The position of the port differ depending on the machine type.

Connecting to the Ethernet Interface

The network interface board supports 10BASE-T or 100BASE-TX connections.

Important

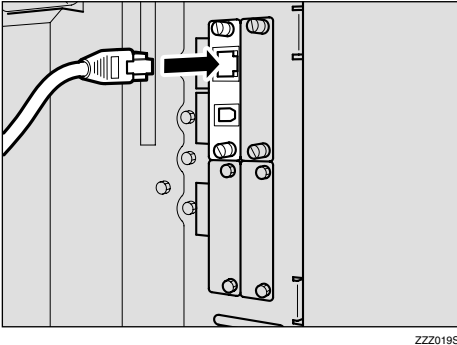
- Before making the connection, touch the metallic part to ground yourself.

1 Turn off the main power switch.

Important

- Make sure the main power is off. See "Turning On the Power", *General Settings Guide*.

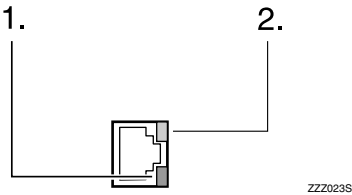
2 Connect the Ethernet interface cable to the 10BASE-T/100BASE-TX port.



Note

- The position of the port differ depending on the machine type.

3 Turn on the main power switch.



1. Indicator (green)

Remains green when the machine is properly connected to the network.

2. Indicator (yellow)

Turns yellow when 100 BASE-TX is operating. Turns off when 10 BASE-T is operating.

Connecting to the IEEE 1394 Interface

Important

- Before making the connection, touch the metallic part to ground yourself.

Note

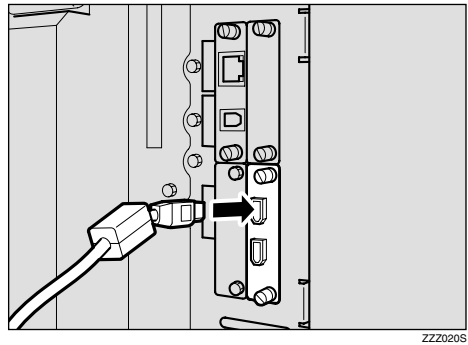
- Use the interface cable supplied with the optional IEEE 1394 interface board.
- Make sure the interface cable is not looped.

1 Turn off the main power switch.

Important

- Make sure the main power is off. See "Turning On the Power", *General Settings Guide*.

2 Connect the IEEE 1394 interface cable to the IEEE 1394 ports.



Note

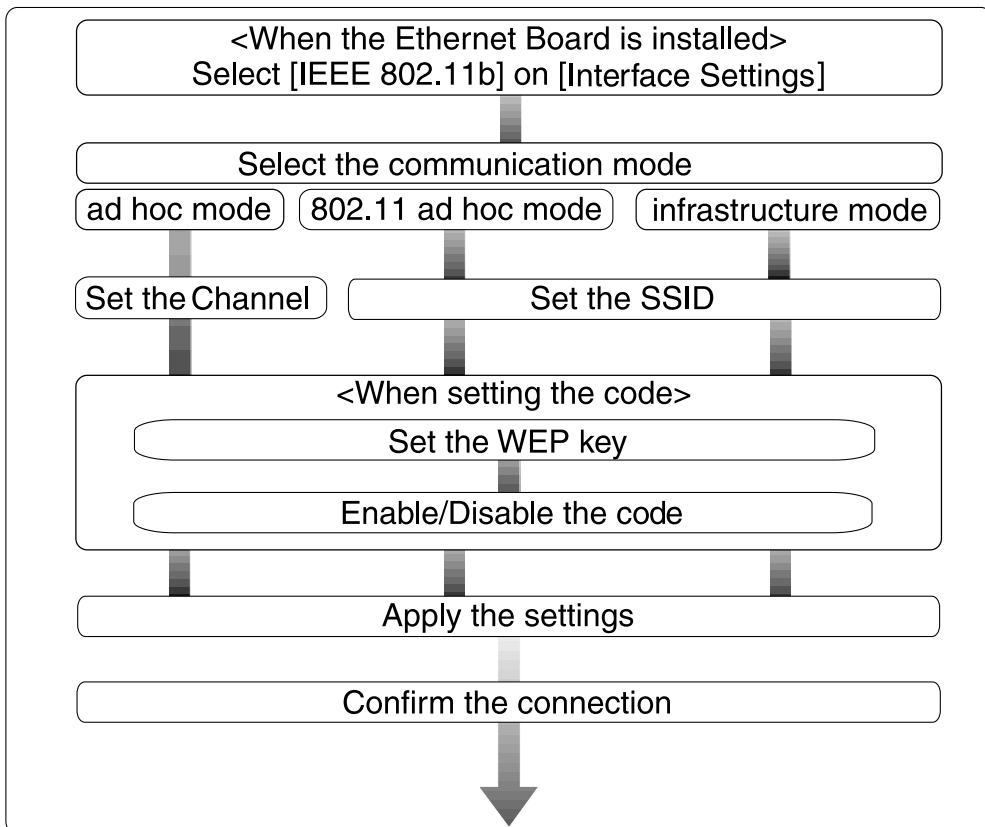
- Two interface ports are available for connecting the IEEE 1394 interface cable. Either is suitable.
- If you have an interface cable with a ferrite core, connect the end nearest to the ferrite core to the machine.
- The position of the port differ depending on the machine type.

3 Turn on the main power switch.

Using the IEEE 802.11b (Wireless LAN)

Setting IEEE 802.11b (Wireless LAN)

■ IEEE 802.11b (wireless LAN) setup procedure



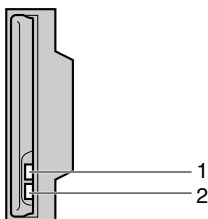
Note

- Select **[802.11 Ad hoc]** mode when connecting Windows XP as a wireless LAN client using Windows XP standard driver or utilities, or when not using the infrastructure mode.

Confirming the Connection

1 Make sure the LED of the IEEE 802.11b interface unit is lit.

❖ When using in infrastructure mode

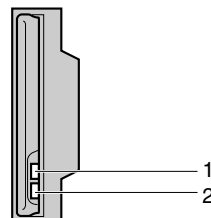


ZZZ024S

1. If [LAN Type] on the [Interface Settings]/[Network] screen is not set to [IEEE 802.11b], it does not light, even if the main power is on.

2. If it is connected properly to the network, the LED is green when in infrastructure mode. If the LED is blinking, the machine is searching for devices.

❖ When using in ad hoc mode/802.11 ad hoc mode



ZZZ024S

1. If the IEEE 802.11b interface unit is working, it is lit in orange.

2. If it is connected properly to the network, the LED is green when in ad hoc mode or 802.11 ad hoc mode. If the LED is blinking, the machine is searching for devices. The LED will light after a few seconds.

2 Print the configuration page to verify settings.

Reference

For more information about printing a configuration page, see *Printer Reference*.

Checking the machine's radio wave status

When using in infrastructure mode, you can check the machine's radio wave status using the control panel.

 **Note**

- To check the radio wave status, press [IEEE 802.11b] under [LAN Type] on the [Network] screen.

1 Press the [User Tools/Counter/Inquiry] key.

2 Press [System Settings].

3 Press [Interface Settings].

4 Press [IEEE 802.11b].

5 Press [Wireless LAN Signal].

The machine's radio wave status appears.

6 After checking radio wave status, press [Exit].

7 Press the [User Tools/Counter/Inquiry] key to return to the User Tools / Counter / Inquiry menu.

Setting Up the Machine on a Network

This section describes the network settings you can change with User Tools (System Settings). Make settings according to functions you want to use and the interface to be connected.

Important

- These settings should be made by the systems administrator, or after consulting with the systems administrator.

Reference

For details about settings, see p.37 “Interface Settings”

❖ Viewing the Information Displayed in the List

- These items must be set to use the function. Be sure to set them before attempting to use the corresponding function.
- These items must be set if required.

Printer/LAN-Fax

Interface	Settings		
Ethernet	Interface Settings/ Network See p.37 “Network”.	IP Address	●
		Gateway Address	○
		DNS Configuration	○
		DDNS Configuration	○
		Domain Name	○
		WINS Configuration	○
		NW Frame Type	○
		LAN Type *2	●
		Ethernet Speed	○
		Effective Protocol *3	●
		SMB Computer Name	○
		SMB Work Group	○
		Permit SNMP V3 Communication	○
		Permit SSL / TLS Communication	○
		Host Name	○
Machine Name	○		

Interface	Settings		
IEEE 1394 (IP over 1394)	Interface Settings/ IEEE 1394 ^{*1} See p.39 "IEEE 1394".	IP Address	●
		IP over 1394	●
		WINS Configuration	○
		DDNS Configuration	○
		Host Name	○
		Domain Name	○
	Interface Settings/ Network See p.37 "Network".	Gateway Address	○
		DNS Configuration	○
		Effective Protocol ^{*3}	●
IEEE 802.11b (wireless LAN)	Interface Settings/ Network See p.37 "Network".	IP Address	●
		Gateway Address	○
		DNS Configuration	○
		DDNS Configuration	○
		Domain Name	○
		WINS Configuration	○
		NW Frame Type	○
		LAN Type ^{*2}	●
		Ethernet Speed	○
		Effective Protocol ^{*3}	●
		SMB Computer Name	○
		SMB Work Group	○
		Permit SNMP V3 Communication	○
		Permit SSL / TLS Communication	○
		Host Name	○
		Machine Name	○
	Interface Settings/ IEEE 802.11b ^{*2} See p.41 "IEEE 802.11b".	Communication Mode	●
		SSID Setting	○
		Channel	○
		WEP (Encryption) Setting	○
Transmission Speed		○	

^{*1} Appears when the optional IEEE 1394 interface board is installed.

^{*2} Appears when the optional IEEE 802.11b interface unit is installed.

If Ethernet and IEEE 802.11b (wireless LAN) are both connected to the machine, the selected interface has priority.

^{*3} Check **[Effective]** is selected for TCP/IP.

Internet Fax

Interface	Settings		
Ethernet	Interface Settings/ Network See p.37 "Network".	IP Address	●
		Gateway Address	●
		DNS Configuration	○
		DDNS Configuration	○
		Domain Name	○
		WINS Configuration	○
		LAN Type *2	●
		Ethernet Speed	○
		Effective Protocol *5	●
		Permit SNMP V3 Communication	○
		Permit SSL / TLS Communication	○
		Host Name	○
		File Transfer See p.42 "File Transfer".	SMTP Server *3
	SMTP Authentication		○
	POP before SMTP		○
	Reception Protocol *4		●
	POP3 Setting *6		○
	Administrator's E-mail Address *8		○
	E-mail Communication Port *4 *7		●
	E-mail Reception Interval		○
Max. Reception E-mail Size	○		
E-mail Storage in Server	○		
Program / Change / Delete E-mail Message	○		
Program / Change / Delete Subject	○		
E-mail Account *3 *4	●		
IEEE 1394 (IP over 1394)	Interface Settings/ IEEE 1394 *1 See p.39 "IEEE 1394".	IP Address	●
		IP over 1394	●
		DDNS Configuration	○
		WINS Configuration	○
		Host Name	○
		Domain Name	○

Interface	Settings		
IEEE 1394 (IP over 1394)	Interface Settings/ Network See p.37 "Network".	Gateway Address	●
		DNS Configuration	○
		Effective Protocol *5	●
	File Transfer See p.42 "File Transfer".	SMTP Server *3	●
		SMTP Authentication	○
		POP before SMTP	○
		Reception Protocol *4	●
		POP3 Setting *6	○
		Administrator's E-mail Address *8	○
		E-mail Communication Port *4 *7	●
		E-mail Reception Interval	○
		Max. Reception E-mail Size	○
		E-mail Storage in Server	○
		Program / Change / Delete E-mail Message	○
		Program / Change / Delete Subject	○
E-mail Account *3 *4	●		
IEEE 802.11b (wireless LAN)	Interface Settings/ Network See p.37 "Network".	IP Address	●
		Gateway Address	●
		DNS Configuration	○
		WINS Configuration	○
		DDNS Configuration	○
		Domain Name	○
		LAN Type *2	●
		Ethernet Speed	○
		Effective Protocol *5	●
		Permit SNMP V3 Communication	○
		Permit SSL / TLS Communication	○
		Host Name	○
	Interface Settings/ IEEE 802.11b Document Server *2 See p.41 "IEEE 802.11b".	Communication Mode	●
		SSID Setting	○
		Channel	○
		WEP (Encryption) Setting	○
		Transmission Speed	○

Interface	Settings		
IEEE 802.11b (wireless LAN)	File Transfer See p.42 "File Transfer".	SMTP Server * ³	●
		SMTP Authentication	○
		POP before SMTP	○
		Reception Protocol * ⁴	●
		POP3 Setting * ⁶	○
		Administrator's E-mail Address * ⁸	○
		E-mail Communication Port * ⁴ * ⁷	●
		E-mail Reception Interval	○
		Max. Reception E-mail Size	○
		E-mail Storage in Server	○
		Program / Change / Delete E-mail Message	○
		Program / Change / Delete Subject	○
		E-mail Account * ³ * ⁴	●

*¹ Appears when the optional IEEE 1394 interface board is installed.

*² Appears when the optional IEEE 802.11b interface unit is installed.

If Ethernet and 802.11b (wireless LAN) are both connected to the machine, the selected interface has priority.

*³ Minimum settings required to use transmission.

*⁴ Minimum settings required to use reception.

*⁵ Check **[Effective]** is selected for TCP/IP.

*⁶ If you select **[On]** for **[POP before SMTP]**, select this function also.

*⁷ If you select **[On]** for **[POP before SMTP]**, check the port number for **[POP3]**.

*⁸ If you select **[On]** for **[SMTP Authentication]**, select this function also.

IP-Fax

Interface	Settings		
Ethernet	Interface Settings/ Network See p.37 "Network".	IP Address	●
		Gateway Address	●
		DNS Configuration	●
		DDNS Configuration	○
		Domain Name	○
		WINS Configuration	○
		LAN Type * ²	●
		Ethernet Speed	○
		Effective Protocol * ³	●
		Permit SNMP V3 Communication	○
		Permit SSL / TLS Communication	○
		Host Name	○
IEEE 1394 (IP over 1394)	Interface Settings/ IEEE 1394 * ¹ See p.39 "IEEE 1394".	IP Address	●
		IP over 1394	●
		DDNS Configuration	●
		WINS Configuration	○
		Host Name	○
		Domain Name	○
	Interface Settings/ Network See p.37 "Network".	Gateway Address	●
		DNS Configuration	○
		Effective Protocol * ³	●

Interface	Settings		
IEEE 802.11b (wireless LAN)	Interface Settings/ Network See p.37 "Network".	IP Address	●
		Gateway Address	●
		DNS Configuration	●
		WINS Configuration	○
		DDNS Configuration	○
		Domain Name	○
		LAN Type * ²	●
		Ethernet Speed	○
		Effective Protocol * ³	●
		Permit SNMP V3 Communication	○
		Permit SSL / TLS Communication	○
	Host Name	○	
	Interface Settings/ IEEE 802.11b * ³ See p.41 "IEEE 802.11b".	Communication Mode	●
		SSID Setting	○
		Channel	○
		WEP (Encryption) Setting	○
Transmission Speed		○	

*¹ Appears when the optional IEEE 1394 interface board is installed.

*² Appears when the optional IEEE 802.11b interface unit is installed.

If Ethernet and 802.11b (wireless LAN) are both connected to the machine, the selected interface has priority.

*³ Check **[Effective]** is selected for TCP/IP.

E-mail

Interface	Settings		
Ethernet	Interface Settings/ Network See p.37 "Network".	IP Address	●
		Gateway Address	●
		DNS Configuration	○
		DDNS Configuration	○
		Domain Name	○
		WINS Configuration	○
		LAN Type *2	●
		Ethernet Speed	○
		Effective Protocol *3	●
		Permit SNMP V3 Communication	○
		Permit SSL / TLS Communication	○
		Host Name	○
			File Transfer See p.42 "File Transfer".
SMTP Authentication	○		
POP before SMTP	○		
POP3 Setting *4	○		
Administrator's E-mail Address	○		
E-mail Communication Port *5	○		
Program / Change / Delete E-mail Message	○		
Program / Change / Delete Subject	○		
Scanner Recall Interval Time	○		
Number of Scanner Recalls	○		

Interface	Settings		
IEEE 1394 (IP over 1394)	Interface Settings/ IEEE 1394 *1 See p.39 "IEEE 1394".	IP Address	●
		IP over 1394	●
		DDNS Configuration	○
		WINS Configuration	○
		Host Name	○
		Domain Name	○
	Interface Settings/ Network See p.37 "Network".	Gateway Address	●
		DNS Configuration	○
		Effective Protocol *3	●
	File Transfer See p.42 "File Transfer".	SMTP Server	●
		SMTP Authentication	○
		POP before SMTP	○
		POP3 Setting *4	○
		Administrator's E-mail Address	○
		E-mail Communication Port *5	○
		Program / Change / Delete E-mail Message	○
Program / Change / Delete Subject		○	
Scanner Recall Interval Time		○	
Number of Scanner Recalls	○		

Interface	Settings		
IEEE 802.11b (wireless LAN)	Interface Settings/ Network See p.37 "Network".	IP Address	●
		Gateway Address	●
		DNS Configuration	○
		DDNS Configuration	○
		Domain Name	○
		WINS Configuration	○
		LAN Type *2	●
		Ethernet Speed	○
		Effective Protocol *3	●
		Permit SNMP V3 Communication	○
		Permit SSL / TLS Communication	○
		Host Name	○
		Interface Settings/ IEEE 802.11b *2 See p.41 "IEEE 802.11b".	Communication Mode
SSID Setting	○		
Channel	○		
WEP (Encryption) Setting	○		
Transmission Speed	○		
File Transfer See p.42 "File Trans- fer".	SMTP Server	●	○
		SMTP Authentication	○
		POP before SMTP	○
		POP3 Setting *4	○
		Administrator's Address	○
		E-mail Communication Port *5	○
		Program / Change / Delete E-mail Message	○
		Program / Change / Delete Subject	○
		Scanner Recall Interval Time	○
Number of Scanner Recalls	○		

*1 Appears when the optional IEEE 1394 interface board is installed.

*2 Appears when the optional IEEE 802.11b interface unit is installed.

If Ethernet and 802.11b (wireless LAN) are both connected to the machine, the selected interface has priority.

*3 Check **[Effective]** is selected for TCP/IP.

*4 If you select **[On]** for **[POP before SMTP]**, select this function as well.

*5 If you select **[On]** for **[POP before SMTP]**, check the port number for **[POP3]**.

Scan to Folder

Interface	Settings		
Ethernet	Interface Settings/ Network See p.37 "Network".	IP Address	●
		Gateway Address	●
		DNS Configuration	○
		DDNS Configuration	○
		Domain Name	○
		WINS Configuration	○
		LAN Type *2	●
		Ethernet Speed	○
		Effective Protocol *3	●
		Host Name	○
		Permit SNMP V3 Communication	○
	Permit SSL / TLS Communication	○	
	File Transfer See p.42 "File Transfer".	Default User Name / Password (Send)	○
Scanner Recall Interval Time		○	
Number of Scanner Recalls		○	
IEEE 1394 (IP over 1394)	Interface Settings/ IEEE 1394 *1 See p.39 "IEEE 1394".	IP Address	●
		IP over 1394	●
		DDNS Configuration	○
		WINS Configuration	○
		Host Name	○
		Domain Name	○
	Interface Settings /Network See p.37 "Network".	Gateway Address	●
		DNS Configuration	○
		Effective Protocol *3	●
	File Transfer See p.42 "File Transfer".	Default User Name / Password (Send)	○
		Scanner Recall Interval Time	○
		Number of Scanner Recalls	○

Interface	Settings		
IEEE 802.11b (wireless LAN)	Interface Settings/ Network See p.37 "Network".	IP Address	●
		Gateway Address	●
		DNS Configuration	○
		DDNS Configuration	○
		Domain Name	○
		WINS Configuration	○
		LAN Type * ²	●
		Ethernet Speed	○
		Effective Protocol * ³	●
		Permit SNMP V3 Communication	○
		Permit SSL / TLS Communication	○
		Host Name	○
		Interface Settings/ IEEE 802.11b * ² See p.41 "IEEE 802.11b".	Communication Mode
	SSID Setting		○
	Channel		○
	WEP (Encryption) Setting		○
	Transmission Speed		○
	File Transfer See p.42 "File Trans- fer".	Default User Name / Password (Send)	○
		Scanner Recall Interval Time	○
		Number of Scanner Recalls	○

*¹ Appears when the optional IEEE 1394 interface board is installed.

*² Appears when the optional IEEE 802.11b interface unit is installed.

If Ethernet and IEEE 802.11b (wireless LAN) are both connected to the machine, the selected interface has priority.

*³ Check **[Effective]** is selected for TCP/IP.

Network Delivery Scanner

Interface	Settings		
Ethernet	Interface Settings/ Network See p.37 "Network".	IP Address	●
		Gateway Address	○
		DNS Configuration	○
		DDNS Configuration	○
		Domain Name	○
		WINS Configuration	○
		LAN Type *2	●
		Ethernet Speed	○
		Effective Protocol *4	●
		Permit SNMP V3 Communication	○
		Permit SSL / TLS Communication	○
	Host Name	○	
	File Transfer See p.42 "File Transfer".	Delivery Option *3	○
		Fax RX File Transmission	○
Scanner Recall Interval Time		○	
Number of Scanner Recalls		○	
IEEE 1394 (IP over 1394)	Interface Settings/ IEEE 1394 *1 See p.39 "IEEE 1394".	IP Address	●
		IP over 1394	●
		DDNS Configuration	○
		WINS Configuration	○
		Host Name	○
		Domain Name	○
	Interface Settings/ Network See p.37 "Network".	Gateway Address	○
		DNS Configuration	○
		Effective Protocol *4	●
	File Transfer See p.42 "File Transfer".	Delivery Option *3	○
		Fax RX File Transmission	○
		Scanner Recall Interval Time	○
		Number of Scanner Recalls	○

Interface	Settings		
IEEE 802.11b (wireless LAN)	Interface Settings/ Network See p.37 "Network".	IP Address	●
		Gateway Address	○
		DNS Configuration	○
		DDNS Configuration	○
		Domain Name	○
		WINS Configuration	○
		LAN Type * ²	●
		Ethernet Speed	○
		Effective Protocol * ⁴	●
		Permit SNMP V3 Communication	○
		Permit SSL / TLS Communication	○
		Host Name	○
		Interface Settings/ IEEE 802.11b * ² See p.41 "IEEE 802.11b".	
SSID Setting	○		
Channel	○		
WEP (Encryption) Setting	○		
Transmission Speed	○		
File Transfer See p.42 "File Trans- fer".		Delivery Option * ³	○
		Fax RX File Transmission	○
		Scanner Recall Interval Time	○
		Number of Scanner Recalls	○

*¹ Appears when the optional IEEE 1394 interface board is installed.

*² Appears when the optional IEEE 802.11b interface unit is installed.

If Ethernet and IEEE 802.11b (wireless LAN) are both connected to the machine, the selected interface has priority.

*³ When delivery option is set to **[On]**, make sure the IP address is set.

*⁴ Check **[Effective]** is selected for TCP/IP.

Network TWAIN Scanner

Interface	Settings		
Ethernet	Interface Settings/ Network See p.37 "Network".	IP Address	●
		Gateway Address	○
		DNS Configuration	○
		DDNS Configuration	○
		Domain Name	○
		WINS Configuration	○
		LAN Type *2	●
		Ethernet Speed	○
		Effective Protocol *3	●
		Permit SNMP V3 Communication	○
		Permit SSL / TLS Communication	○
Host Name	○		
IEEE 1394 (IP over 1394)	Interface Settings/ IEEE 1394 *1 See p.39 "IEEE 1394".	IP Address	●
		IP over 1394	●
		DDNS Configuration	○
		WINS Configuration	○
		Host Name	○
	Interface Settings/ Network See p.37 "Network".	Domain Name	○
		Gateway Address	○
		DNS Configuration	○
		Effective Protocol *3	●

Interface	Settings		
IEEE 802.11b (wireless LAN)	Interface Settings/ Network See p.37 "Network".	IP Address	<input checked="" type="radio"/>
		Gateway Address	<input type="radio"/>
		DNS Configuration	<input type="radio"/>
		DDNS Configuration	<input type="radio"/>
		Domain Name	<input type="radio"/>
		WINS Configuration	<input type="radio"/>
		LAN Type * ²	<input checked="" type="radio"/>
		Ethernet Speed	<input type="radio"/>
		Effective Protocol * ³	<input checked="" type="radio"/>
		Permit SNMP V3 Communication	<input type="radio"/>
		Permit SSL / TLS Communication	<input type="radio"/>
	Host Name	<input type="radio"/>	
	Interface Settings/ IEEE 802.11b * ² See p.41 "IEEE 802.11b".	Communication Mode	<input checked="" type="radio"/>
		SSID Setting	<input type="radio"/>
		Channel	<input type="radio"/>
		WEP (Encryption) Setting	<input type="radio"/>
		Transmission Speed	<input type="radio"/>

*¹ Appears when the optional IEEE 1394 interface board is installed.

*² Appears when the optional IEEE 802.11b interface unit is installed.

If Ethernet and 802.11b (wireless LAN) are both connected to the machine, the selected interface has priority.

*³ Check **[Effective]** is selected for TCP/IP.

Document Server

Interface	Settings		
Ethernet	Interface Settings/ Network See p.37 "Network".	IP Address	●
		Gateway Address	○
		DNS Configuration	○
		DDNS Configuration	○
		Domain Name	○
		WINS Configuration	○
		LAN Type *2	●
		Ethernet Speed	○
		Effective Protocol *3	●
		Permit SNMP V3 Communication	○
		Permit SSL / TLS Communication	○
Host Name	○		
IEEE 1394 (IP over 1394)	Interface Settings/ IEEE 1394 *1 See p.39 "IEEE 1394".	IP Address	●
		IP over 1394	●
		DDNS Configuration	○
		WINS Configuration	○
		Host Name	○
	Interface Settings/ Network See p.37 "Network".	Domain Name	○
		Gateway Address	○
		DNS Configuration	○
		Effective Protocol *3	●

Interface	Settings		
IEEE 802.11b (wireless LAN)	Interface Settings/ Network See p.37 "Network".	IP Address	●
		Gateway Address	○
		DNS Configuration	○
		DDNS Configuration	○
		Domain Name	○
		WINS Configuration	○
		LAN Type * ²	●
		Ethernet Speed	○
		Effective Protocol * ³	●
		Permit SNMP V3 Communication	○
		Permit SSL / TLS Communication	○
	Host Name	○	
	Interface Settings/ IEEE 802.11b * ² See p.41 "IEEE 802.11b".	Communication Mode	●
		SSID Setting	○
		Channel	○
WEP (Encryption) Setting		○	
Transmission Speed		○	

*¹ Appears when the optional IEEE 1394 interface board is installed.

*² Appears when the optional IEEE 802.11b interface unit is installed.

If Ethernet and IEEE 802.11b (wireless LAN) are both connected to the machine, the selected interface has priority.

*³ Check [**Effective**] is selected for TCP/IP.

Network Configuration

Any change you make with User Tools remains in effect even if the main power switch or operation switch is turned off, or the **[Energy Saver]** or **[Clear Modes]** key is pressed.

Configuring the network using the control panel

Note

- Operations for System Settings are different from normal operations. After using User Tools, press the **[User Tools/Counter/Inquiry]** key to exit.
- When **[User Authentication Management]** is set, operations are not possible with the machine unless a valid user name and password is entered. For details about user authentication, consult administrator.

1 Press the **[User Tools/Counter/Inquiry]** key.

Note

- The machine will be offline during setting.

2 Press **[System Settings]**.

3 Press **[Interface Settings]** or **[File Transfer]**.

4 Select the required menu, and then press the desired key.

5 Change settings by following the instructions on the display panel, and then press **[OK]**.

Note

- To cancel changes made to settings and return to the System Settings menu, press **[Cancel]**.

6 Press **[Exit]**.

7 Press the **[User Tools/Counter/Inquiry]** key.

Note

- You can also exit by pressing **[Exit]** on the User Tools main menu.

Configuring the network using other utilities

As well as using the control panel to make network settings, utilities such as a Web Image Monitor and SmartDeviceMonitor for Admin can also be used. The following table shows available settings:

Note

- Indicates machine settings can be changed.
- Indicates the setting cannot be changed from that device.

Name on the control panel				WebImage Monitor	SmartDe-viceMon-itor for Admin	telnet		
Interface Settings	Network	IP Address	Auto-Obtain (DHCP)		○	○	○	
			Specify	IP Address	○	○	○	
				Sub-net Mask	○	○	○	
		Gateway Address				○	○	○
		DNS Configuration	Auto-Obtain (DHCP)		○	-	○	
			Specify	►DNS Server 1	○	-	○	
				►DNS Server 2	○	-	○	
				►DNS Server 3	○	-	○	
		DDNS Configuration				○	-	○
		Domain Name	Auto-Obtain (DHCP)		○	-	○	
			Specify	►Do-main Name	○	-	○	
		WINS Configuration	On	►Prima-ry WINS Server		○	-	○
				►Second-ary WINS Server		○	-	○
				Scope ID		○	-	○
			Off		○	-	○	

Name on the control panel				WebImage Monitor	SmartDeviceMonitor for Admin	telnet	
Interface Settings	Network	Effective Protocol	TCP/IP		-	<input type="radio"/> *1	<input type="radio"/>
			NetWare		<input type="radio"/>	<input type="radio"/> *2	<input type="radio"/>
			SMB		<input type="radio"/>	<input type="radio"/>	<input type="radio"/>
			AppleTalk		<input type="radio"/>	<input type="radio"/>	<input type="radio"/>
		NW Frame Type	Auto Select		<input type="radio"/>	-	<input type="radio"/>
			Ethernet II		<input type="radio"/>	-	<input type="radio"/>
			Ethernet 802.2		<input type="radio"/>	-	<input type="radio"/>
			Ethernet 802.3		<input type="radio"/>	-	<input type="radio"/>
			Ethernet SNAP		<input type="radio"/>	-	<input type="radio"/>
		SMB Computer Name			<input type="radio"/>	-	<input type="radio"/>
		SMB Work Group			<input type="radio"/>	-	<input type="radio"/>
		Ethernet Speed			-	-	-
		LAN Type	Ethernet		<input type="radio"/>	-	<input type="radio"/>
			IEEE 802.11b		<input type="radio"/>	-	<input type="radio"/>
		Ping Command			-	-	-
		Permit SNMP V3 Communication	Encryption Only		-	-	<input type="radio"/>
			Encryption / Clear Text		-	-	-
		Permit SSL / TLS Communication	Ciphertext Only		-	-	-
	Ciphertext Priority		-	-	-		
	Ciphertext / Clear Text		-	-	-		
	Host Name			<input type="radio"/>	<input type="radio"/>	<input type="radio"/>	
	Machine Name			<input type="radio"/>	-	<input type="radio"/>	
	IEEE 1394	IP Address	Auto-Obtain (DHCP)		<input type="radio"/>	-	<input type="radio"/>
			Specify	IP Address		<input type="radio"/>	-
Sub-net Mask				<input type="radio"/>	-	<input type="radio"/>	
DDNS Configuration			<input type="radio"/>	-	<input type="radio"/>		
Host Name			<input type="radio"/>	-	<input type="radio"/>		

Name on the control panel				WebImage Monitor	SmartDeviceMonitor for Admin	telnet		
Interface Settings	IEEE 1394	Domain Name	Auto-Obtain (DHCP)		<input type="radio"/>	-	-	
			Specify	Domain Name	<input type="radio"/>	-	<input type="radio"/>	
		WINS Configuration	On	Primary WINS Server		<input type="radio"/>	-	<input type="radio"/>
				Secondary WINS Server		<input type="radio"/>	-	<input type="radio"/>
				Scope ID		<input type="radio"/>	-	<input type="radio"/>
			Off		<input type="radio"/>	-	<input type="radio"/>	
		IP over 1394	Active		<input type="radio"/>	-	<input type="radio"/>	
			Inactive		<input type="radio"/>	-	<input type="radio"/>	
		SCSI print (SBP-2)	Active		<input type="radio"/>	-	<input type="radio"/>	
			Inactive		<input type="radio"/>	-	<input type="radio"/>	
		Bidirectional SCSI print	Active		<input type="radio"/>	-	<input type="radio"/>	
			Inactive		<input type="radio"/>	-	<input type="radio"/>	
		IEEE 802.11b	Communication Mode	802.11 Ad hoc		<input type="radio"/>	-	<input type="radio"/>
				Ad hoc		<input type="radio"/>	-	<input type="radio"/>
	Infrastructure			<input type="radio"/>	-	<input type="radio"/>		
	SSID Setting				<input type="radio"/>	-	<input type="radio"/>	
	Channel				<input type="radio"/>	-	<input type="radio"/>	
	WEP (Encryption) Setting		WEP	Active		<input type="radio"/>	-	<input type="radio"/>
				Inactive		<input type="radio"/>	-	<input type="radio"/>
			Encryption		<input type="radio"/>	-	<input type="radio"/>	
	Wireless LAN Signal				-	-	-	
	Transmission Speed		Auto		-	-	<input type="radio"/>	
			11Mbps Fixed		-	-	<input type="radio"/>	
			5.5Mbps Fixed		-	-	<input type="radio"/>	
			2Mbps Fixed		-	-	<input type="radio"/>	
		1Mbps Fixed		-	-	<input type="radio"/>		
	Return to Defaults				-	-	-	
Print List				-	-	-		

Name on the control panel		WebImage Monitor	SmartDeviceMonitor for Admin	telnet
File Transfer	Delivery Option	-	-	-
	Capture Server IP Address	-	-	-
	Fax RX File Transmission	-	-	-
	SMTP Server	○	-	-
	SMTP Authentication	○	-	-
	POP before SMTP	○	-	-
	Reception Protocol	○	-	-
	POP3 Setting	○	-	-
	Administrator's E-mail Address	○	-	-
	E-mail Communication Port	○	-	-
	E-mail Reception Interval	○	-	-
	Max. Reception E-mail Size	○	-	-
	E-mail Storage in Server	○	-	-
	Default User Name / Password (Send)	○	-	-
	Program / Change / Delete E-mail Message	-	-	-
	Program / Change / Delete Subject	-	-	-
	Scanner Recall Interval Time	-	-	-
	Number of Scanner Recalls	-	-	-
	E-mail Account	-	-	-
	Auto Specify Sender Name	-	-	-

*1 You can make the TCP/IP settings if SmartDeviceMonitor for Admin is communicating with the machine using IPX/SPX.

*2 You can make the IPX/SPX settings if SmartDeviceMonitor for Admin is communicating with the machine using TCP/IP.

Interface Settings

Network

❖ IP Address

Before using this machine in the network environment, you must configure the IP address and sub-net mask.

- Auto-Obtain (DHCP)
- Specify
When you select **[Specify]**, enter the **[IP Address]** and **[Sub-net Mask]** as "xxx.xxx.xxx.xxx" ("x" indicates a number).
 - IP Address: 011.022.033.044
 - Sub-net Mask: 000.000.000.000

Note

- Default: *Auto-Obtain (DHCP)*
- If you use the interface for Ethernet and IEEE 1394 (IP over 1394) at the same time, settings must be made carefully. See p.139 "Using DHCP".
- If you install the optional IEEE 1394 interface board and use the IEEE 1394 interface, you must set the address of the domain, different from the **[IP Address]** of **[IEEE 1394]**. If you intend to set the address for the same domain, set a different value for the **[Sub-net Mask]**.
- When you select **[Specify]**, be sure not to set the same **[IP Address]** as that of another machines on the network.
- The physical address (MAC address) also appears.

❖ Gateway Address

A gateway is a connection or interchange point between two networks. Configure the gateway address for the router or host computer used as a gateway.

- Gateway Address:000.000.000.000

Note

- Default: *000.000.000.000*

❖ DNS Configuration

Make settings for the DNS server.

- Auto-Obtain (DHCP)
- Specify
When you select **[Specify]**, enter the **[DNS Server]** IP address as "xxx.xxx.xxx.xxx" ("x" indicates a number).
 - ▶DNS Server 1:000.000.000.000
 - ▶DNS Server 2:000.000.000.000
 - ▶DNS Server 3:000.000.000.000

Note

- Default: *Auto-Obtain (DHCP)*

❖ DDNS Configuration

You can specify the DDNS settings.

- Active
- Inactive

❖ Domain Name

You can specify the domain name.

- Auto-Obtain (DHCP)
- Specify
 - Domain Name

❖ **WINS Configuration**

You can specify the WINS server settings.

- On
If **[On]** is selected, enter the **[▶WINS Server]** IP address as “xxx.xxx.xxx.xxx” (“x” indicates a number).
If DHCP is in use, specify the **[Scope ID]**.

- Primary WINS Server
- Secondary WINS Server
- Scope ID

- Off

🗨 **Limitation**

- Enter a **[Scope ID]** using up to 31 alphanumeric characters.

📝 **Note**

- Default: *Off*

❖ **Effective Protocol**

Select the protocol to use in the network.

- TCP/IP:Effective/Invalid
- NetWare:Effective/Invalid
- SMB:Effective/Invalid
- AppleTalk:Effective/Invalid

📝 **Note**

- Default: *TCP/IP: Effective, NetWare: Effective, SMB: Effective, AppleTalk: Effective*

❖ **NW Frame Type**

Select the frame type when you use NetWare.

- Auto Select
- Ethernet II
- Ethernet 802.2
- Ethernet 802.3
- Ethernet SNAP

📝 **Note**

- Default: *Auto Select*

❖ **SMB Computer Name**

Specify the SMB computer name.

❖ **SMB Work Group**

Specify the SMB work group.

❖ **Ethernet Speed**

Set the access speed for networks. Select a speed that matches your network environment. **[Auto Select]** should usually be selected.

- Auto Select
- 100Mbps Full Duplex
- 100Mbps Half Duplex
- 10Mbps Full Duplex
- 10Mbps Half Duplex

📝 **Note**

- Default: *Auto Select*

❖ **LAN Type**

When you have installed the optional IEEE 802.11b interface unit, select interface, IEEE 802.11b (wireless LAN) or Ethernet.

- Ethernet
- IEEE 802.11b

📝 **Note**

- Default: *Ethernet*

- Appears when the optional IEEE 802.11b interface unit is installed.

- If Ethernet and IEEE 802.11b (wireless LAN) are both connected to the machine, the selected interface takes precedence.

❖ **Ping Command**

Check the network connection with ping command using given IP address.

✎ **Note**

If you fail to connect to the network, check the following, and then retry the ping command.

- Check TCP/IP of the printer is active.
- Check that the machine with assigned IP address is connected to the network.
- There is a possibility that same IP address is used for the specified equipment.

❖ **Permit SNMP V3 Communication**

Set the encrypted communication of SNMP v3.

- Encryption Only
- Encryption / Clear Text

✎ **Note**

If you set to **[Encryption Only]**, you need to set password for the machine.

❖ **Permit SSL / TLS Communication**

Set the encrypted communication of SSL/TLS.

- Ciphertext Only
- Ciphertext Priority
- Ciphertext / Clear Text

✎ **Note**

Default: *Ciphertext Priority*

If you set to **[Encryption Only]**, you need to install the server authentication for the machine.

❖ **Host Name**

Specify the host name.

❖ **Machine Name**

Specify the machine name.

IEEE 1394

✎ **Preparation**

You must install the optional IEEE 1394 interface board in the machine.

❖ **IP Address**

When you connect the machine to a network using the IEEE 1394 interface, you must configure the IP address and subnet mask.

- Auto-Obtain (DHCP)
- Specify
When you select **[Specify]**, enter the **[IP Address]** and **[Sub-net Mask]** as "xxx.xxx.xxx.xxx" ("x" indicates a number).
 - IP Address: 011.022.033.044
 - Sub-net Mask: 000.000.000.000

✎ **Note**

Default: *Auto-Obtain (DHCP)*

If you use the interface for Ethernet and IEEE 1394 (IP over 1394) at the same time, settings must be made carefully. See p.139 "Using DHCP"

When you use the IEEE 1394 interface on a network, you cannot use the Ethernet interface in the same domain. To use both interfaces in the same domain, set different values for the **[Sub-net Mask]**.

The physical address (EUI-64) also appears.

❖ **DDNS Configuration**

You can specify the DDNS settings.

- Active
- Inactive

❖ **Host Name**

Specify the host name.

❖ **Domain Name**

Make settings for the domain name.

- Auto-Obtain (DHCP)
- Specify
 - Domain Name

✎ **Note**

Default: *Auto-Obtain (DHCP)*

❖ **WINS Configuration**

You can specify the WINS server settings.

- On

If **[On]** is selected, specify the **[▶WINS Server]** IP address as "xxx.xxx.xxx.xxx" ("xxx" indicates a number).
If DHCP is in use, specify the **[Scope ID]**.

 - Primary WINS Server
 - Secondary WINS Server
 - Scope ID
- Off

! **Limitation**

Enter **[Scope ID]** using up to 31 alphanumeric characters.

✎ **Note**

Default: *Off*

❖ **IP over 1394**

When you use the IP over 1394 function of the IEEE 1394 interface to connect the machine to the network, or you print from computer with the IP over 1394 driver, you must specify **[Active]** for **[IP over 1394]**.

- Active
- Inactive

! **Limitation**

Printing with IP over 1394 is possible under Windows Me/XP and Windows Server 2003

✎ **Note**

Default: *Active*

❖ **SCSI print (SBP-2)**

When you print using the SCSI print client function supported by Windows 2000/XP, or Windows Server 2003, you must set **[SCSI print (SBP-2)]**.

- Active
- Inactive

! **Limitation**

The IEEE 1394 interface can be used when Windows 2000 Service Pack 1 or later is installed. If the Service Pack is not installed, only one SCSI print device is connectable via 1394 bus.

✎ **Note**

Default: *Active*

❖ **Bidirectional SCSI print**

Specifies the printer's response mode etc. for status requests when using the IEEE 1394 interface.

- On
- Off

✎ **Note**

Default: *On*

If this is set to **[Off]**, bidirectional communication will not work.

IEEE 802.11b

Preparation

You must install the optional IEEE 802.11b interface unit into the machine.

Note

- Be sure to make all settings simultaneously.

❖ Communication Mode

Specifies the communication mode of the wireless LAN.

- 802.11 Ad hoc
- Ad hoc
- Infrastructure

Note

- Default: *802.11 Ad hoc*

❖ SSID Setting

Specifies SSID to distinguish the access point in infrastructure mode or 802.11 ad hoc mode.

Limitation

- The characters that can be used are ASCII 0x20-0x7e (32 bytes).

Note

- Default: *blank (ASSID)*
- If blank is specified in 802.11b ad hoc mode or ad hoc mode, "ASSID" appears.

❖ Channel

Specifies a channel when you select 802.11b ad hoc mode or ad hoc mode.

Note

- Default: *11*
- The following channels are available:
 - Metric version: 1-13
 - Inch version: 1-11

❖ WEP (Encryption) Setting

Specifies the encryption of the IEEE 802.11b (wireless LAN). If this is set to **[Active]**, you must enter the WEP key.

- ▶WEP
 - Active
 - Inactive
- ▶Encryption
 - 10 alphanumeric characters must be entered for 64 bit, 26 characters for 128 bit.

Note

- Default: *Inactive*

❖ Wireless LAN Signal

Shows the radio wave conditions of the access point connected in infrastructure mode.

Note

- Radio wave status is displayed when you press **[Wireless LAN Signal]**.

❖ Transmission Speed

Specifies the communication speed of the IEEE 802.11b (wireless LAN).

- Auto
- 11Mbps Fixed
- 5.5Mbps Fixed
- 2Mbps Fixed
- 1Mbps Fixed

Note

- Default: *Auto*

❖ Return to Defaults

You can return the IEEE 802.11b (wireless LAN) settings to their defaults.

- No
- Yes

Print List

You can check items related to the network in use.

Reference

For details about printing, see p.42 “Printing the Interface Settings”.

Printing the Interface Settings

The configuration page shows the current network settings and network information.

1 Press the **[User Tools/Counter/Inquiry]** key.

2 Press **[System Settings]**.

3 Press **[Interface Settings]**.

4 Press **[Print List]**.

5 Press the **[Start]** key.

The configuration page is printed.

6 Press **[Exit]**.

7 Press the **[User Tools/Counter/Inquiry]** key.

Note

- You can also exit by pressing **[Exit]** on the User Tools main menu.

File Transfer

❖ Delivery Option

Enables or disables sending stored or scanned documents via the ScanRouter delivery software delivery server.

- On
 - Main Delivery Server IP Address
 - Sub Delivery Server IP Address
- Off

Note

- Default: *Off*
- Set this option when specifying whether or not to use the ScanRouter delivery software. If you do, you will have to re-register I/O devices in the ScanRouter delivery software.

❖ Capture Server IP Address

Specify the capture server IP address.

Note

- This setting appears when the media link board is installed, and that the capture function is being used by the ScanRouter delivery software. Set this option using the I/O device settings in the ScanRouter delivery software.

❖ Fax RX File Transmission

- ▶Setting per Line
Specifies whether or not received fax documents are sent to the ScanRouter delivery software for each fax line.
 - Line 1: Deliver to Server/Do not Deliver
 - Line 2: Deliver to Server/Do not Deliver
 - E-mail: Deliver to Server/Do not Deliver
 - IP-Fax: Deliver to Server/Do not Deliver

Note

- Default: *Do not Deliver*

- Print at Delivery
Specifies whether or not received fax documents sent to the ScanRouter delivery software should also be printed at the same time.
 - Print
 - Do not Print

Note

- Default: *Do not Print*

- File to Deliver
Specifies whether all received fax documents or only received fax documents that include delivery codes (documents with an ID and SUB/SEP code) are sent to the ScanRouter delivery software.
 - File with Delivery Code
 - All Files

Note

- Default: *All Files*

- ▶Delivery Failure File
 - Print File
 - Delete File

If a received fax document cannot be sent to the ScanRouter delivery software, it is stored in memory. To print a stored file, select [**Print File**]; to delete, select [**Delete File**].

Note

- If the machine can send the data to the ScanRouter delivery software, it does so automatically.
- If you delete the data, you will not be able to distribute or print it.

❖ SMTP Server

Specify the SMTP server name.

If DNS is in use, enter the host name.

If DNS is not in use, enter the SMTP server IP address.

- Server Name
- Port No.:25

Limitation

- Enter the [**Server Name**] using up to 127 alphanumeric characters. Spaces cannot be used.

Note

- Enter [**Port No.**] between 1 and 65535 using the number keys, and then press the [**#**]key.
- The SMTP server shares its port number with direct SMTP.

❖ SMTP Authentication

You can configure SMTP authentication (PLAIN, LOGIN, CRAM-MD5, DIGEST-MD5).

Authentication prevents unauthorized access, by making users enter a user name and password when sending e-mail to the SMTP server.

- On

If the SMTP server requires authentication, set **[SMTP Authentication]** to **[On]**, and then specify **[User Name]**, **[Password]**, and **[►Encryption]**.

 - User Name
 - E-mail Address
 - Password
 - ►Encryption
 - Auto/On/Off
- Off

📌 Limitation

- Enter **[User Name]** using up to 191 alphanumeric characters. Spaces cannot be used.
- Depending on the SMTP server type, "realm" must be specified. Add "@" after the user name, as in "user name@realm".
- Enter **[Password]** using up to 63 alphanumeric characters. Spaces cannot be used.
- Enter the user name and password to be set for **[Administrator's E-mail Address]** when using Internet Fax.

📌 Note

- Default: *Off*
- [►Encryption]-[Auto]**: If the authentication method is PLAIN, LOGIN, CRAM-MD5, or DIGEST-MD5.
- [►Encryption]-[On]**: If the authentication method is CRAM-MD5 or DIGEST-MD5.
- [►Encryption]-[Off]**: If the authentication method is PLAIN, or LOGIN.

❖ POP before SMTP

You can configure POP authentication (POP before SMTP).

Authentication prevents unauthorized access, by authenticating with the POP server before sending e-mail to the SMTP server.

- On

To enable POP server authentication before sending e-mail via the SMTP server, set **[POP before SMTP]** to **[On]**. E-mail is sent to the SMTP server after the time specified for **[►Wait Time after Auth.]** has elapsed.

 - ►Wait Time after Auth.: 300msec
 - User Name
 - E-mail Address
 - Password
- Off

! Limitation

- Enter **[User Name]** using up to 63 alphanumeric characters. Spaces cannot be used.
- Enter **[Password]** using up to 63 alphanumeric characters. Spaces cannot be used.

📝 Note

- Default: *Off*
- Using the number keys, you can set **[▶Wait Time after Auth.]** from zero to 10,000 milliseconds, in increments of one millisecond.
- If you select **[On]**, enter **[Server Name]** in **[POP3 Setting]**. Also, check the port number for **[POP3]** in **[E-mail Communication Port]**.

❖ Reception Protocol

Specify Reception Protocol for receiving Internet faxes.

- Off
- POP3
- SMTP

📝 Note

- Default: *Off*

❖ POP3 Setting

Specify the POP3 **[Server Name]** for receiving Internet faxes.

The specified POP3 server name is used for **[POP before SMTP]**.

If DNS is in use, enter the host name.

If DNS is not in use, enter the POP3 or server IP address.

- Server Name
- ▶Encryption
 - Auto
 - On
 - Off

! Limitation

- Enter POP3 **[Server Name]** using up to 127 alphanumeric characters. Spaces cannot be used.

📝 Note

- ▶Encryption-**[Auto]**: Password encryption is automatically set according to the POP server settings.
- ▶Encryption-**[On]**: Encrypt password.
- ▶Encryption-**[Off]**: Do not encrypt password.

❖ Administrator's E-mail Address

On e-mailed scanned documents, if the sender is not specified this appears as the sender's address.

This can be used as the sender with SMTP authentication for Internet Fax. If **[On]** is selected for **[SMTP Authentication]** be sure to enter the administrator's e-mail address here. This can be used as the destination for data transmission result cc e-mails, as well as the destination for data communication management e-mail.

! Limitation

- Enter up to 128 alphanumeric characters.

❖ E-mail Communication Port

Specify the **[POP3]** port numbers for receiving Internet faxes.

The specified POP3 port number is used for **[POP before SMTP]**.

- POP3: 110

📝 Note

- Default: *POP3/110*
- Enter a port number between 1 and 65535 using the number keys, and then press the **[#]** key.

❖ **E-mail Reception Interval**

Specify, in minutes, the time limit for receiving Internet faxes via POP3 or IMAP4 server.

- On: 15 minute(s)
- Off

✎ **Note**

- Default: *On/15 minute(s)*
- If [On] is selected, the number of times can be set from 1 to 1440 in increments of one minute, using the number keys.

❖ **Max. Reception E-mail Size**
Specify the [Max. Reception E-mail Size] for receiving Internet faxes.✎ **Note**

- Default: *2MB*
- Using the number keys, enter a size from one to 50 MB in increments of one megabyte.

❖ **E-mail Storage in Server**

You can specify whether or not to store received Internet fax e-mails on the POP3 or IMAP4 server.

- Off
- All
- Errors Only

✎ **Note**

- Default: *Off*

❖ **Default User Name / Password (Send)**

You can specify the user name and password required when sending scan file directly to a shared folder on a computer running Windows, or to an FTP server.

- SMB User Name
- SMB Password
- FTP User Name
- FTP Password

📍 **Limitation**

- Enter up to 128 alphanumeric characters.

❖ **Program / Change / Delete E-mail Message**

You can program, change, or delete the e-mail message used when sending an Internet fax or scan file as an attachment.

- Program / Change
- Delete

✎ **Note**

- Enter a name using up to 20 alphanumeric characters.
- Enter up to five lines of text. Each line can consist of up to 80 alphanumeric characters.

❖ **Program / Change / Delete Subject**

You can program, change, or delete the subject used when sending an Internet fax or scan file as an attachment.

- Program / Change
- Delete

✎ **Note**

- Enter a subject using up to 20 alphanumeric characters.

❖ **Scanner Recall Interval Time**

Specifies the interval the machine waits before resending scan file, if they cannot be sent to the delivery server or mail server.

✎ **Note**

- Default: *300 seconds*
- The interval time can be set from 60 to 999 seconds in one second increments, using the number keys.
- This setting is for the scanner function.

❖ **Number of Scanner Recalls**

Sets a maximum number of times scan file is resent to the delivery server or mail server.

- On: 3 time(s)

- Off

Note

- Default: *On/3 time(s)*
- If **[On]** is selected, the number of times can be set from 1 to 99 using the number keys.
- This setting is for the scanner function.

❖ **E-mail Account**

Specify **[E-mail Address]**, **[User Name]**, and **[Password]** for receiving Internet faxes.

- ▶Fax Mail Reception
 - E-mail Address
 - User Name
 - Password

Limitation

- Enter an e-mail address using up to 128 alphanumeric characters.
- Enter a user name using up to 64 alphanumeric characters.
- Enter a password using up to 64 alphanumeric characters.

❖ **Auto Specify Sender Name**

Set name of the sender when sending an e-mail.

- On
 - Scanner: If the sender is not specified, the administrator's e-mail address is entered in the **[From:]** box. If the sender is specified, the specified e-mail address is entered in the **[From:]** box.
 - Fax: If the sender is not specified, the machine's e-mail address is entered in the **[From:]** box. If the machine's e-mail address is not set, or the e-mail address is not registered, the administrator's e-mail address is entered in the **[From:]** box.
- Off
 - Scanner: If the sender is not specified, the e-mail cannot be sent. If the sender is specified, the specified e-mail address is entered in the **[From:]** box.
 - Fax: If the sender is not specified, the e-mail cannot be sent. If the sender is specified, the specified e-mail address is entered in the **[From:]** box.

Programming, changing, or deleting an e-mail message

Limitation

- Enter a name using up to 20 alphanumeric characters.
- Enter up to five lines of text. Each line can consist of up to 80 alphanumeric characters.

1 Press the **[User Tools/Counter/Inquiry]** key.

2 Press **[System Settings]**.

3 Press **[File Transfer]**.

4 Press **[▼ Next]**.

The next screen appears.

5 Press **[Program / Change / Delete E-mail Message]**.

Programming an e-mail message

1 Press **[*Not programed]**.

2 Press **[Change]**, and then enter the name.

Reference

For more information about entering text, see "Entering Text", *General Settings Guide*.

3 Press **[OK]**.

4 Press **[Edit]**, and then enter the text.

To start a new line, press **[OK]** to return to the e-mail message screen, and then press **[▼]** in **[Select Line to Edit:]**.

5 Press **[OK]**.

The e-mail message screen appears.

6 Press **[OK]**.

Changing an e-mail message

1 Select the e-mail message to change.

2 If you want to change the subject, press **[Change]**.

3 Change the subject, and then press **[OK]**.

4 If you want to change the text, press **[Edit]**.

5 Press **[▲]** or **[▼]** to select the line to change.

6 Change the text, and then press **[OK]**.

7 Press **[OK]**.

Deleting an e-mail message

1 Press **[Delete]**.

2 Select the e-mail message to delete.

The confirmation message about deleting appears.

3 To delete the data, press **[Yes]**.

6 Press **[Exit]**.

7 Press **[Exit]**.

8 Press the **[User Tools/Counter/Inquiry]** key.

Note

- You can also exit by pressing **[Exit]** on the User Tools main menu.

Programming, changing, or deleting a subject

Limitation

- Enter a subject using up to 20 alphanumeric characters.

Note

- [Urgent]** and **[High]** are programmed as the e-mail subjects.

- 1** Press the **[User Tools/Counter/Inquiry]** key.
- 2** Press **[System Settings]**.
- 3** Press **[File Transfer]**.
- 4** Press **[▼Next]**. The next screen appears.
- 5** Press **[Program / Change / Delete Subject]**.

Programming a subject

- 1** Press **[*Not programed]**, and then enter the text.

Reference

For more information about entering text, see "Entering Text", *General Settings Guide*.

- 2** Press **[OK]**.

Changing a subject

- 1** Select the subject to change.
- 2** Enter the text.
- 3** Press **[OK]**.

Deleting a subject

- 1** Press **[Delete]**.
- 2** Select the subject to delete.
The confirmation message about deleting appears.
- 3** To delete the subject, press **[Yes]**.
- 6** Press **[Exit]**.
- 7** Press **[Exit]**.
- 8** Press the **[User Tools/Counter/Inquiry]** key.

You can also exit by pressing **[Exit]** on the User Tools main menu.

LDAP Server Settings

Program the LDAP server to find up e-mail destinations in the LDAP server Address Book directly. This function is possible when sending scan files by e-mail using the scanner or fax function, or when entering authentication information.

2

Before using this function

To start an LDAP search, make sure that the items listed below are set. For other items, check your environment and make any necessary changes.

- Server Name
- Search Base
- Port No.
- Search Conditions
- Authentication method selection

Note

- For authentication method, select from **[High Security]**, **[On]**, or **[Off]**.

- User Name/Password
The settings above differ depending on server environment. Check your environment and make any necessary changes.

Note

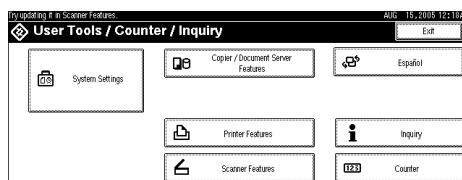
- To use the LDAP server in Administrator Tools, select **[On]** under **[LDAP Server]**.
- This function supports LDAP Version 2.0 and 3.0. Ver 2.0 does not support High Security authentication.

Program/Change/Delete LDAP Server

To enter Program/Change/Delete LDAP Server

1 Press the **[User Tools/Counter/Inquiry]** key.

2 Press **[System Settings]**.



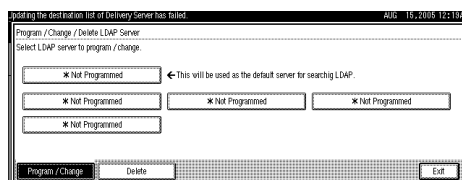
3 Press **[Administrator Tools]**, and then press **[▼Next]** twice.

4 Press **[Program / Change / Delete LDAP Server]**.

To program/change the LDAP server

1 Select the LDAP server you want to program or change.

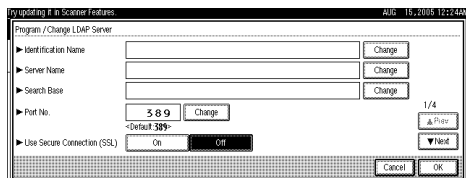
When programming the server, select **[*Not Programmed]**.



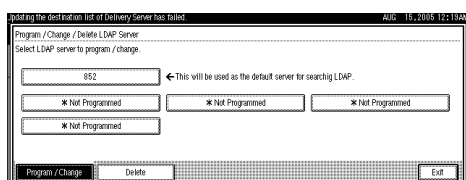
2 Set each item as necessary.

To finish programming/changing the LDAP Server

1 Press **[Change]** after setting each item.



2 Press **[Exit]**.

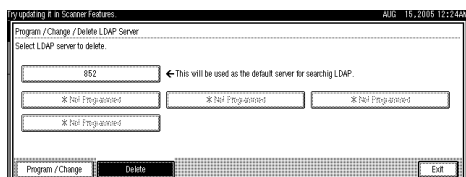


3 Press **[Exit]**.

4 Press the **[User Tools/Counter/Inquiry]** key.

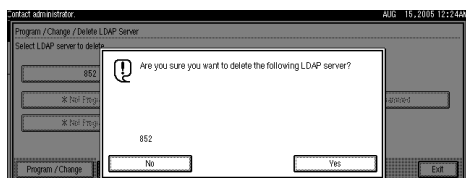
To delete the programmed LDAP server

1 Press **[Delete]**.



2 Select the LDAP server you want to delete.

3 Press **[Yes]**.

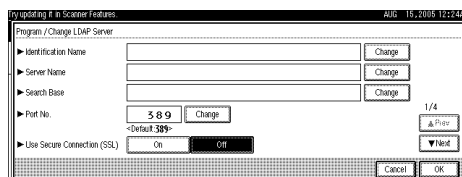


Programming the LDAP Server

To enter an identification name

Register a name for the LDAP server that will appear on the server selection screen of the LDAP search operation.

1 Press **[Change]** under **[Identification Name]**.



2 Enter the server's identification name.

3 Press **[OK]**.

To enter a server name

Register the LDAP server's host name or IP address.

1 Press **[Change]** under **[Server Name]**.

2 Enter the LDAP server name.

3 Press **[OK]**.

To enter the search base

Select a route folder defined by the LDAP server to start the search from e-mail addresses registered in the selected folder are search targets.

1 Press **[Change]** under **[Search Base]**.

2 Enter the search base.

 **Note**

- For example, if the search target is the sales department of ABC company, enter "dc=sales department, o=ABC". (In this example, the description is for an active directory. "dc" is for the organization unit, and "o" is for the company.)
- Search base registration may be required depending on your server environment. When registration is required, unspecified searches will result in error. Check you server environment and enter any required specifications.

3 Press **[OK]**.

To enter a port number

Specify the port number for communicating with the LDAP server. Specify a port that is compliant with your environment.

1 Press **[Change]** under **[Port No.]**.

2 Enter the port number using the number keys, and then press **[#]**.

 **Note**

- When SSL is set to **[On]**, the port number automatically changes to "689".
- This function supports the TLS v1, SSL v3 and v2.

To start SSL communication

Use SSL to communicate with the LDAP server.

1 Press **[On]**.

 **Note**

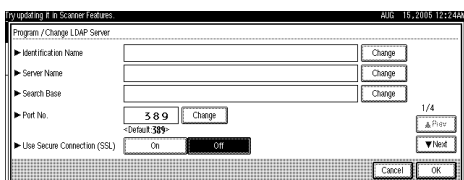
- To use SSL, the LDAP server must support SSL.
- When SSL is set to **[On]**, the port number automatically changes to "689".
- SSL setting must be enabled on this machine. For details, consult your network administrator.

To set authentication

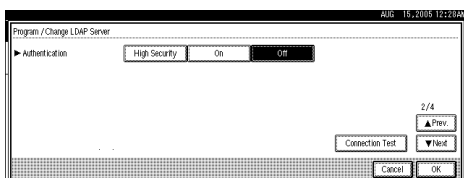
To make a search request to the LDAP server, use the administrator account for authentication.

For details about the administrator account, see "To enter the user name and password".

1 Press [▼Next].



2 Press [On] or [High Security] under [Authentication].



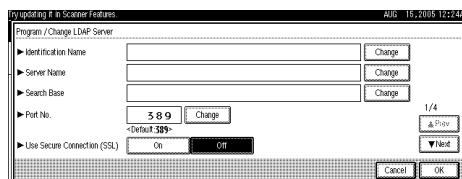
Note

- Authentication settings must comply with your server's authentication settings. Check your server settings before setting this machine.
- [High Security]** is available only with LDAP Version 3.0.
- When **[High Security]** is selected, the administrator password is encrypted before it is sent to the network. When **[On]** is selected, the password is sent without encryption.

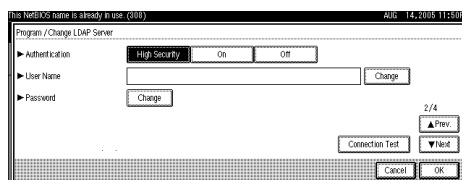
To enter the user name and password

When **[On]** or **[High Security]** is selected for the authentication setting, use the administrator account name and password. Do not enter the administrator account name and password when using authentication for each individual or each search.

1 Press [▼Next].



2 Press [Change] under [User Name].



3 Enter the user name, and then press [OK].

Note

- Procedures for the user name setting differ depending on server environment. Check your server environment before making the setting.
 - Example setting procedures:
Domain Name\User Name
User Name@Domain Name
CN=Name, OU=Department Name, DC=Server Name

4 Press [Change] under [Password].

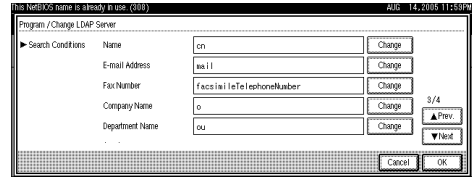
5 Enter the password, and then press [OK].

2

Note

- The user name and password are required for administrator access to the LDAP server.
- You can set the user name and password in this machine's Address Book to allow individual authentication access to the LDAP server. Use Administrator Tools to select the user name and password you want to use. For details, see General Settings Guide.

- 2** Press [Change] for items you want to use as search conditions from the following: [Name], [E-mail Address], [Fax Number], [Company Name], and [Department Name].



- 3** Enter the attribute you want to use when searching for e-mail addresses, and then press [OK].

Note

- The attribute value may change depending on the server environment. Check the attribute value complies with your server environment before setting it.
- You can leave items blank, but you cannot leave attributes blank when searching for e-mail addresses from the LDAP server Address Book.

To test the connection

Access the LDAP server to check the proper connection is established. Check authentication works according to the authentication settings.

- 1** Press [Connection Test].
A connection test is carried out.

- 2** Press [Exit].

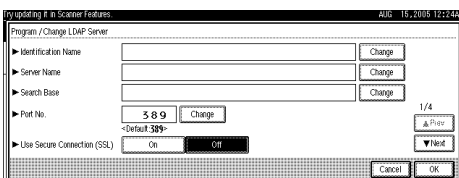
Note

- If the connection test fails, check your settings and try again.
- This function does not check search conditions or the search base.

To set search conditions

You can enter an attribute as a typical search keyword. Using the entered attribute, the function searches the LDAP server's Address Book.

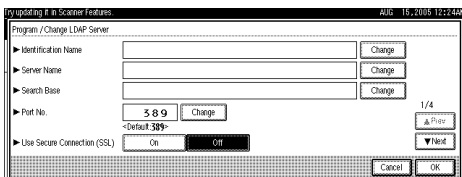
- 1** Press [▼Next]twice.



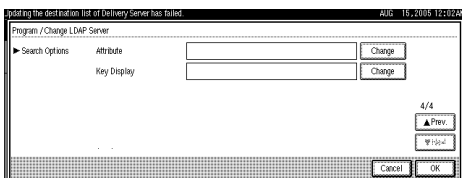
To set search options

To search the LDAP server data using a keyword other than prepared keywords such as Name, E-mail Address, FAX Number, Company Name, and Department Name, specify the attribute for the keyword registered in your LDAP server, and the name to be displayed on the control panel during the search. For example, to search e-mail addresses by employee number, enter "employeeNo." in the Attribute field, and "Employee No." in the key display field.

- 1 Press [▼Next] three times.



- 2 Press [Change] under [Attribute].



- 3 Enter the attribute you want to use when searching for e-mail addresses, and then press [OK].

Note

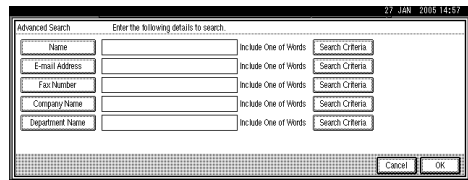
- The attribute value may change depending on the server environment. Check the attribute complies with your server environment before setting it.

- 4 Press [Change] under [Key Display].

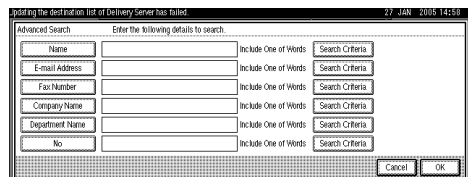
- 5 Enter the key display, and then press [OK].

The registered "key display" appears as a keyword for searching LDAP.

- Without key display registration



- With key display registration



Note

- The key does not appear on the search screen unless both "Attribute" and "Key Display" are registered. Make sure you register both to use the optional search.

3. Using a Printer Server

Preparing Printer Server

This section explains how to configure the machine as a Windows network printer. The machine is configured to enabling network clients to use it. When the network printer is connected via SmartDeviceMonitor for Client, you can set the printing notification function to notify clients of the results of their print jobs.

Important

- Under Windows 2000, Windows XP Professional, or Windows Server 2003, to change printer properties in the **[Printer]** folder, you need Printer Management access authentication; under Windows NT 4.0, Full Control access authentication. Log on to the file server as an Administrator or member of the PowerUsers group.

1 Open the **[Printers]** window from the **[Start]** menu.

The **[Printers]** window appears.

2 Click the icon of the machine you want to use. On the **[File]** menu, click **[Properties]**. The printer properties appear.

3 On the **[Sharing]** tab, click **[Shared as:]**.

4 To share the machine with users using a different version of Windows, click **[Additional Drivers...]**.

Note

- If you have installed an alternative driver by selecting **[Shared as:]** during the printer driver installation, this step can be ignored.

5 Click **[OK]**. Close the printer properties.

Printing notification via SmartDeviceMonitor for Client

Follow the procedure below to configure the machine to use the printing notification function of SmartDeviceMonitor for Client.

Setting the print server

Important

- Under Windows 2000, Windows XP Professional, or Windows Server 2003, to change printer properties in the **[Printer]** folder, you need Printer Management access authentication; under Windows NT 4.0, Full Control access authentication. Log on to the file server as an Administrator or member of the PowerUsers group.

1 From the **[Start]** button on the task bar, point to **[Program]**, point to **[SmartDeviceMonitor for Client]**, and then click **[Print Server Settings]**.

The print server setting dialog box appears.

2 Select the **[Notify Client of Printing]** check box, and click **[OK]**.

After print server setting is made, a dialog box appears. Confirm the dialog box content, and click **[OK]**.

Click **[Cancel]** to interrupt the procedure.

3 A dialog box appears for client setting. Click **[OK]**.

The print server setting is complete. Each client must be set to receive print notification.

 **Note**

- Current printing jobs restart from the beginning after the spooler pauses briefly.
- When the expansion function is not used, the function is automatically set as available.
- If you log on using an account that does not have Administrator privileges, the client may not be notified.

Setting a Client

1 From the [Start] button on the task bar, point to [Program], point to [SmartDeviceMonitor for Client], and then click [Setting Expansion Function].

A dialog box for setting the expansion function appears.

2 Select the [Use the expansion function] check box in [Notify Printing].

3 Select the [Notify when using the print server] check box.

4 Click [OK].

The dialog box for setting the expansion function closes. The client setting is completed.

 **Note**

- Set the printing notification function on the printer driver as well as on SmartDeviceMonitor for Client.

Using NetWare

This section describes the setting procedure for network printers in the NetWare environment. In the NetWare environment, you can connect the machine as a “print server” or “remote printer”.

❖ Setting procedure

- When using the machine as a print server
 - ① Installing SmartDeviceMonitor for Admin
 - ② Setting the network interface board.
 - ③ Turning the machine off and then back on.
- When using the machine as a remote printer
 - ① Installing SmartDeviceMonitor for Admin.
 - ② Setting the network interface board.
 - ③ Setting NetWare.
 - ④ Starting the print server.

Note

- ❑ This procedure assumes an environment is already prepared for normal NetWare running the printing service setting.
- ❑ The procedure is explained with the following example settings:
 - File server’s name ...CAREE
 - Print server’s name ...PSERV
 - Printer’s name ...R-PRN
 - Queue name ...R-QUEUE

❖ Using SmartDeviceMonitor for Admin

To use the machine in a NetWare environment, use SmartDeviceMonitor for Admin to set the NetWare printing environment.

Note

- ❑ The NetWare Client provided by Novell is required to set the printing environment using SmartDeviceMonitor for Admin under the following environments:
 - NDS mode in Windows 95/98/Me
 - NDS or Bindery mode in Windows 2000/XP, Windows NT 4.0

Reference

For details about installing SmartDeviceMonitor for Admin, see p.77 “Installing SmartDeviceMonitor for Admin”.

❖ Printers listed by SmartDeviceMonitor for Admin

SmartDeviceMonitor for Admin lists printers connected to the network. If you cannot identify the machine you want to configure, print configuration page, and then check the machine name.

Setting Up as a Print Server (NetWare 3.x)

Follow the procedure below to connect the machine as a print server using NetWare 3.x.

- 1** Log on to the file server as a supervisor or supervisor equivalent.
- 2** Start NIB Setup Tool from the [Start] menu.
- 3** Click [Wizard], and then click [OK].
- 4** Select a machine you want to configure.

5 Enter the printer name in the **[Device name:]** box and a comment in the **[Comment]** box, and then click **[Next]**.

6 Select the **[NetWare]** check box, and then click **[Next]**.

7 Click **[Bindery mode]**, enter the file server name in the **[File Server Name:]** box, and then click **[Next]**.

In the **[File Server Name:]** box, enter the name of the file server in which a print server is created. You can also click **[Browse...]** to browse through available file servers.

8 Enter the print server name in the **[Print Server Name:]** box, the printer name in the **[Printer Name:]** box, and the print queue name in the **[Print Queue Name]** box, and then click **[Next]**.

- In the **[Print Server Name:]** box, enter the name of the NetWare print server using up to 47 characters.
- In the **[Printer Name:]** box, enter the name of the NetWare printer.
- In the **[Print Queue Name]** box, enter the name of the print queue to be added to NetWare.

9 Check the settings, and then click **[Next]**.

The settings are applied, and NIB Setup Tool quits.

10 Turn the printer off and then on again.

 **Note**

- To check that the configuration is made correctly, enter the following from the command prompt.

F: > USERLIST

- If the printer works as configured, the name of the print server appears as a connected user.
- If you cannot identify the printer you want to configure, check the printer name with the configuration page printed from the printer. For details about printing a configuration page, see Printer Reference.
- If no printer names appear in the list, match the frame types of IPX/SPXs for the computer and printer. Use the **[Network]** dialog box of Windows to change the frame type of the computer.

Setting Up as a Print Server (NetWare 4.x, 5/5.1, 6/6.5)

Follow the procedure below to connect the printer as a print server using NetWare 4.x, NetWare 5/5.1, or NetWare 6/6.5.

 **Important**

- When using the printer as a print server in NetWare 4.x, NetWare 5/5.1, or NetWare 6/6.5, set it to the NDS mode.
- When using NetWare 5/5.1 or NetWare 6/6.5, set the printer as a print server.

1 Log on to the file server as a supervisor or supervisor equivalent.

2 Start NIB Setup Tool on the **[Start]** menu.

3 Click **[Wizard]**, and then click **[OK]**.

4 Select a printer you want to configure.

5 Enter the printer name in the [Device name:] box and a comment in the [Comment] box, and then click [Next].

6 Select the [NetWare] check box, and then click [Next].

7 Click [NDS mode], enter the file server name in the [File Server Name:] box, the NDS tree name in the [NDS Tree] box, and the context in the [NDS Context:] box, and then click [Next].

In the [File Server Name:] box, enter the name of the file server in which a print server is created. You can also click [Browse...] to browse through available file servers and NDS context names.

In the [NDS Tree] box, enter the name of the NDS tree in which a print server is created using up to 32 alphanumeric characters. Hyphens and underscores can also be used. You can also click [Browse...] to browse through available NDS trees.

For a context, object names are entered from the lowest object with each object separated by a period. For example, if you want to create a print server in NET under DS, enter "NET.DS".

8 Enter the print server name in the [Print Server Name:] box, the printer name in the [Printer Name:] box, the print queue name in the [Print Queue Name] box, and the print queue volume in the [Print Queue Volume] box, and then click [Next].

- In the [Print Server Name:] box, enter the name of the NetWare print server using up to 47 characters.
- In the [Printer Name:] box, enter the name of the NetWare printer.
- In [Print Queue Name] box, enter the print queue volume.
- In [Print Queue Volume], type the print queue volume. For a volume, object names are entered from the lowest object with each object separated by a period. You can also click [Browse...] to browse through available volumes.

9 Check the settings, and then click [Next].

The settings are applied, and NIB Setup Tool quits.

10 Turn the printer off and then on again.

 **Note**

- To check that the configuration is made correctly, enter the following from the command prompt.

```
F:> NLIST USER /A/B
```

- If the printer works as configured, the name of the print server appears as a connected user.

- ❑ If you cannot identify the printer you want to configure, check the printer name with the configuration page printed from the printer. For details about printing a configuration page, see Printer Reference.
- ❑ If no printer names appear in the list, match the frame types of IPX/SPXs for the computer and printer. Use the **[Network]** dialog box of Windows to change the frame type of the computer.

Reference

When using the printer in a pure IP environment of NetWare 5/5.1 or NetWare 6.0, see p.62 “Using Pure IP in the NetWare 5/5.1 or 6/6.5 Environment”.

Using Pure IP in the NetWare 5/5.1 or 6/6.5 Environment

Follow the procedure below to connect the printer as a print server in a pure IP environment of NetWare 5/5.1 or NetWare 6/6.5.

Important

- ❑ When creating a queued print server in a pure IP environment of NetWare 5/5.1 or NetWare 6/6.5, create a print queue on the file server using NetWare Administrator.
- ❑ This printer is not available as a remote printer for use in a pure IP environment.
- ❑ To use the printer in a pure IP environment, set it to TCP/IP.

Setting up using NIB Setup Tool

- 1** Log on to the file server as an administrator or administrator equivalent.
- 2** Start NIB Setup Tool on the **[Start]** menu.
- 3** Click **[Property Sheet]**, and then click **[OK]**.
- 4** Select a printer you want to configure.
- 5** On the **[NetWare]** tab, Select **[File Server Mode]** or **[NDS mode]** in the **[Logon Mode]** area.

When **[File Server Mode]** is selected, the network connection is established based on the string entered in the **[File Server Name(F):]** box.

When **[NDS mode]** is selected, the network connection is established based on the string entered in the **[NDS Tree]** box.

- 6** In the **[Print Server Name:]** box, enter the name of the print server.
- 7** In the **[File Server Name:]** box, enter the name of the file server in which a print server is created.
You can also click **[Browse...]** to browse through available file servers.
- 8** Enter the NDS tree name in the **[NDS Tree]** box.

Enter up to 32 alphanumeric characters. Hyphens and underscores can also be used.

- 9** In the [NDS Context:] box, enter the context of the print server.

You can also click [Browse...] to browse through available NDS trees and NDS contexts.

For a context, object names are entered from the lowest object with each object separated by a period. For example, if you want to create a print server in Net under DS, enter "NET.DS".



- 10** In the [Print Server Operation Mode] area, click [As Print Server].
- 11** Click [OK] to close the [NIB Setup Tool] dialog box.

Setting up using NWadmin

- 1** From Windows, start NWadmin.
For details about NWadmin, see the NetWare manuals.
- 2** Select the object in which the print queue is located in the directory tree, and then click [Create] on the [Object] menu.
- 3** In the [Class of new object] box, click [Print Queue], and then click [OK].
- 4** In the [Print Queue Name] box, enter the name of the print queue.
- 5** In the [Print Queue Volume] box, click [Browse].
- 6** In the [Available objects] box, click the volume in which the print queue is created, and then click [OK].

- 7** Check the settings, and then click [Create].

- 8** Select the object in which the printer is located, and then click [Create] on the [Object] menu.

- 9** In the [Class of new object] box, click [Printer], and then click [OK]. For NetWare 5, click [Printer (Non NDPS)].

- 10** In the [Printer name] box, enter the printer name

- 11** Select the [Define additional properties] check box, and then click [Create].

- 12** Click [Assignments], and then click [Add] in the [Assignments] area.

- 13** In the [Available objects] box, click the queue you, and then click [OK].

- 14** Click [Configuration], click [Parallel] in the [Printer type] list, and then click [Communication].

- 15** Click [Manual load] in the [Communication type] area, and then click [OK].

- 16** Check the settings, and then click [OK].

- 17** Select a context specified using NIB Setup Tool, and then click [Create] on the [Object] menu.

- 18** In the [Class of new object] box, click [Print Server], and then click [OK]. For NetWare 5, click [Print Sever (Non NDPS)].

- 19** In the [Print Server Name] box, enter the print server name.

Use the same print server name specified using NIB Setup Tool.

- 20 Select the [Define additional properties] check box, and then click [Create].
- 21 Click [Assignments], and then click [Add] in the [Assignments] area.
- 22 In the [Available objects] box, click the queue you created, and then click [OK].
- 23 Check the settings, and then click [OK].
- 24 Start the print server by entering the following from the console of the NetWare server.

If the print server is in operation, quit and restart it.

❖ To exit

```
CAREE: unload pserver
```

❖ To start

```
CAREE: load pserver
print_server_name
```

Setting Up as a Remote Printer (NetWare 3.x)

Follow the procedure below to use the printer as a remote printer under NetWare 3.x.

Setting up using NIB Setup Tool

- 1 Log on to the file server as a supervisor or supervisor equivalent.
- 2 Start NIB Setup Tool from [Start] menu.
- 3 Click [Property Sheet], and then click [OK].
- 4 Select a printer you want to configure.

- 5 On the [NetWare] tab, enter the name of the print server in the [Print Server Name:] box.
- 6 In the [File Server Name:] box, enter the name of the file server in which a print server is created.
You can also click [Browse...] to browse through available file servers.
- 7 In the [Print Server Operation Mode] area, click [As Remote Printer].
- 8 In the [Remote Printer No.] box, enter the printer number.
Use the same printer number created in the print server.
- 9 A confirmation message appears. Click [OK].
- 10 On the [NIB] menu, click [Exit].

Setting up using PCONSOLE

- 1 Enter "PCONSOLE" from the command prompt.
F: > PCONSOLE
- 2 Create a print queue.
When using the existing print queue, go to the procedure for creating a printer.
- 3 From the [Available Options] menu, select [Print Queue Information], and then press the [Enter] key.
- 4 Press [Insert] key, and then enter a print queue name.
- 5 Press [ESC] key to return to the [Available Options] menu.
- 6 Set up the network connection to a printer.

- 7** On the [Available Options] menu, click [Print Server Information], and then press the [ENTER] key.
- 8** To create a new print server, press the [INSERT] key, and then enter a print server name.
For a currently defined print server, select a print server in the [Print Server] list.
Use the same printer name specified using NIB Setup Tool.
- 9** From the [Print Server Information] menu, select [Print Server Configuration].
- 10** From the [Print Server Configuration] menu, select [Printer Configuration].
- 11** Select the printer indicated as [Not Installed].
Use the same printer number specified as the remote printer number using NIB Setup Tool.
- 12** To change the printer name, enter a new name.
A name "Printer x" is assigned to the printer. The "x" stands for the number of the selected printer.
- 13** As type, select [Remote Parallel, LPT1].
The IRQ, Buffer size, Starting form, and Queue service mode are automatically configured.
- 14** Press the [ESC] key, and then click [Yes] on the confirmation message.
- 15** Press the [ESC] key to return to [Print Server Configuration Menu].
- 16** Assign print queues to the created printer.
- 17** From [Print Server Configuration Menu], select [Queues Serviced By Printer].
- 18** Select the printer created.
- 19** Press the [INSERT] key to select a queue serviced by the printer.
You can select several queues.
- 20** Follow the instructions on the screen to make other necessary settings.
Following these steps, check that the queues are assigned.
- 21** Press the [ESC] key until "Exit?" appears, and then select [Yes] to exit PCONSOLE.
- 22** Start the print server by entering the following from the console of the NetWare server.
If the print server is in operation, quit and restart it.
 - ❖ To quit
CAREE: unload pserver
 - ❖ To start
CAREE: load pserver
print_server_name

 **Note**

- If the printer works as configured, the message "Waiting for job" appears.

Setting Up as a Remote Printer (NetWare 4.x, 5/5.1, 6/6.5)

Follow the procedure below to use the printer as a remote printer under NetWare 4.x, 5/5.1 and 6/6.5.

Important

- To use the printer as a remote printer under NetWare 4.x, 5/5.1, 6/6.5, set it to NDS mode.
- Do not use the printer as a remote printer when Pure IP is used.

Setting up using NIB Setup Tool

- 1** Log on to the file server as an administrator or administrator equivalent.
- 2** Start NIB Setup Tool from [Start] menu.
- 3** Click [Property Sheet], and then click [OK].
- 4** Select a printer you want to configure.
- 5** Click [NetWare].
- 6** In the [Logon Mode] area, click [File Server Mode] or [NDS mode].
If [File Server Mode] is selected, the network connection is established based on the string you entered.
If [NDS mode] is selected, the network connection is established based on the string you entered.
- 7** In the [Print Server Name(P):] box, enter the name of the print server.
Use the same print server name in NWadmin. Enter up to 47 alphanumeric characters.

- 8** In the [File Server Name(F):] box, enter the name of the file server in which a print server is created.

You can also click [Browse...] to browse through available file servers. Enter up to 47 alphanumeric characters.

- 9** In the [NDS Tree(T):] box, enter the NDS tree name and create the file server.

You can also click [Browse...] to browse through available NDS trees and NDS contexts. Enter up to 32 alphanumeric characters. Hyphens and underscores can also be used.

- 10** In the [NDS Context(C):] box, enter a context in which the print server is created.

Enter up to 127 alphanumeric characters.

For context, object names from Root are entered from the lowest object, with each object separated by a period. For example, to create a print server in the NETWORK object under the organization object DS of Root, enter "NETWORK.DS".

- 11** In the [Print Server Option Mode] area, click [As Remote Printer(R)].

- 12** In the [Remote Printer No.(N)] box, enter the printer number. Use the same printer number created.

- 13** Click [OK] to close [NIB Setup Tool].

Setting up using NWadmin

1 From Windows, start NWadmin.

For details about NWadmin, see the NetWare manuals.

2 Set up the network connection to a print queue. Select the object in which the print queue is located in the directory tree, and then click [Create] on the [Object] menu.

3 In the [Class of new object] box, click [Print Queue], and then click [OK].

4 In the [Print Queue Name] box, enter the name of the print queue.

5 In the [Print Queue Volume] box, click [Browse].

6 In the [Available objects] box, click the volume in which the print queue is created, and then click [OK].

7 Check the settings, and then click [Create].

8 Set up the network connection to a printer. Select the object in which the printer is located, and then click [Create] on the [Object] menu.

9 In the [Class of new object] box, click [Printer], and then click [OK]. For NetWare 5, click [Printer (Non NDPS)].

10 In the [Printer name] box, enter the printer name

11 Select the [Define additional properties] check box, and then click [Create].

12 Assign print queues to the created printer. Click [Assignments], and then click [Add] in the [Assignments] area.

13 In the [Available objects] box, click the queue you created, and then click [OK].

14 Click [Configuration], click [Parallel] in the [Printer type] list, and then click [Communication].

15 Click [Manual load] in the [Communication type] area, and then click [OK]. Check the settings, and then click [OK].

16 Set up the network connection to a print server. Select a context specified using NIB Setup Tool, and then click [Create] on the [Object] menu.

17 In the [Class of new object] box, click [Print Server], and then click [OK]. For NetWare 5, click [Print Sever (Non NDPS)].

18 In the [Print Server Name:] box, enter the print server name.

Use the same print server name specified using NIB Setup Tool.

19 Select the [Define additional properties] check box, and then click [Create].

20 Assign the printer to the created print server. Click [Assignments], and then click [Add] in the [Assignments] area.

21 In the [Available objects] box, click the queue you created, and then click [OK].

22 In the [Printers] area, click the printer you assigned, and then click [Printer Number]

- 23** Enter the printer number, and then click [OK]. Check the settings, and then click [OK].

Use the same printer number specified as the remote printer number using NIB Setup Tool.

- 24** Start the print server by entering the following from the console of the NetWare server.

If the print server is in operation, quit and restart it.

❖ **To exit**

```
CAREE: unload pserver
```

❖ **To start**

```
CAREE: load pserver  
print_server_name
```

4. Monitoring and Configuring the Printer

Using Web Image Monitor

Using Web Image Monitor, you can check the machine status and change settings.

❖ Available operations

The following operations can be remotely performed using Web Image Monitor from a client computer.

- Displaying machine status or settings
- Checking the print job status or history
- Checking, modifying, printing, or deleting print jobs stored in the Document Server
- Interrupting currently printing jobs
- Resetting the printer
- Managing the Address Book
- Making machine settings
- Making network protocol settings
- Making security settings

❖ Configuring the machine

To perform the operations from Web Image Monitor, TCP/IP is required. After the machine is configured to use TCP/IP, operations from Web Image Monitor become available.

❖ Recommended Web browser

- Windows:
Internet Explorer 5.5 SP1 or higher
Netscape Navigator 7.0 or higher
- Mac OS:
Netscape Navigator 7.0 or higher
Safari 1.0 or higher

Note

- To use Netscape Navigator with Secured Sockets Layer (SSL: an encryption protocol), use Netscape Navigator 7.0 or higher.
- If the previous versions of the Web browser above are used or JavaScript and cookies are not enabled with the Web browser used, display and operation problems may occur.
- If you are using a proxy server, change the Web browser settings. Contact your network administrator for information about the settings.
- The previous page may not appear even after the back button of a Web browser is clicked. If this happens, click the refresh button of a Web browser.
- Updating the machine information is not automatically performed. Click **[Refresh]** in the display area to update the machine information.

Displaying Top Page

This section explains the Top Page and how to display Web Image Monitor.

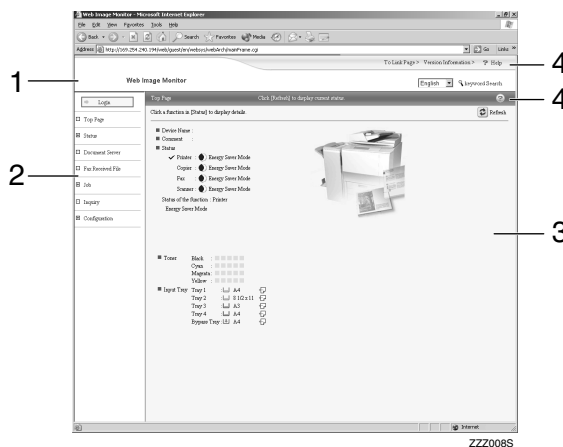
- 1 Start your Web browser.
- 2 Enter "http://(machine's address)/" in the address bar of a Web browser.

Top Page of Web Image Monitor appears.

Note

- If the machine's host name has been registered on the DNS or WINS server, you can enter it. For details, see p.139 "Using DHCP".
- When setting SSL, a protocol for encrypted communication, under environment which server authentication is issued, enter "https://(machine's address)/".

Every Web Image Monitor page is divided into the following areas:



1. Header area

The link to help and dialog box for keyword search appears.

2. Menu area

The dialog box for switching to the user mode and administrator mode appears, and each mode's menu will be displayed.

If you select menu, it's content will be shown on the work area, or the sub area.

3. Display area

Displays the contents of the item selected in the menu area.

Machine information in the display area is not automatically updated. Click **[Refresh]** at the upper right in the display area to update the machine information. Click the Web browser's **[Refresh]** button to refresh the entire browser screen.

Machine status, network interface board names, and comments are displayed.

4. Help

Use Help to view or download Help file contents.

When user authentication is set

Login (using Web Image Monitor)

Follow the procedure below to log on when user authentication is set.

- 1 Click **[Login]**.
- 2 Enter a login user name and password, and then click **[OK]**.

For details about the user name and password, consult your network administrator.

 **Note**

- For user code authentication, enter a user code in **[User Name]**, and then click **[OK]**.
- The procedure may differ depending on the Web browser used.

Log Off (using Web Image Monitor)

Click **[Logout]** to log off.

 **Note**

- When you log on and made the setting, always click **[Logout]**.

About Menu and Mode

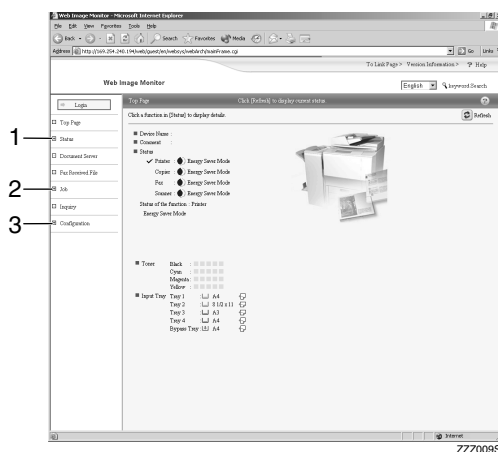
There are two modes available with Web Image Monitor: user mode and administrator mode.

Displayed Items may differ depending on the machines.

❖ About User Mode

In the user mode, machine status, settings, and print job status can be viewed, but the machine settings cannot be changed.

4



1. Status

Machine status, including the amount of remaining paper in paper trays and the amount of remaining toner, is displayed.

2. Job

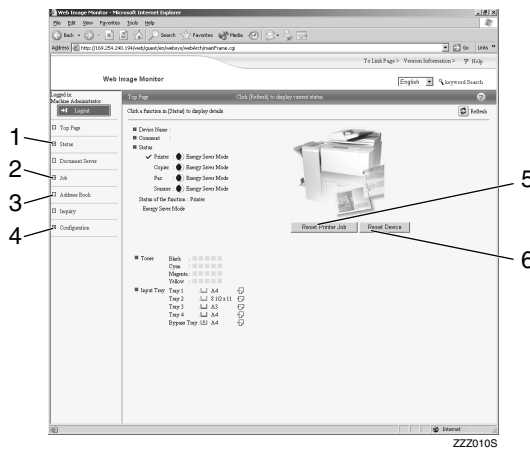
Allows you to display list of Spooled print Job, Job History, Error Log, Locked Print and Sample Print jobs. This also perform or delete Locked Print and Sample print jobs.

3. Configuration

Display current machine and network settings, and download help files.

❖ Administrator Mode

In the administrator mode, you can configure various machine settings.



1. Status

Machine status, including the amount of remaining paper in paper trays and the amount of remaining toner, is displayed.

2. Job

Allows you to display list of Spool Print Job, Job History, Error Log, Locked Print and Sample Print jobs. This also allows you to delete Spooled Print Job, Locked Print and Sample Print jobs.

3. Address Book

User information can be registered, displayed, changed, and deleted.

4. Configuration

Make system settings for the machine, interface settings, and security.

5. Reset Printer Job

Click to reset current print jobs and print jobs in queue. This button is located on Top Page.

6. Reset Device

Click to reset the printer. If a print job is being processed, the printer will be reset after the print job is completed. This button is located on Top Page.

Access in the Administrator Mode

Follow the procedure below to access Web Image Monitor in the administrator mode.

1 On Top Page, click [Login].

The dialog box for entering the user name and password appears.

2 Enter your user name and password, and then click [OK].

For details about the user name and password, consult your network administrator.

Note

- For user authentication, enter a login user name and password, and then click [OK].
- For user code authentication, enter a user code in [User Name], and then click [OK].

Displaying Web Image Monitor Help

When using Help for the first time, clicking either [Help] in the header area or the icon marked "?" in the display area makes the following screen appear, in which you can view Help in two different ways, as shown below:

❖ Viewing Help on our Web site

Downloading Help to your computer

❖ Downloading and Checking Help

You can download Help to your computer. As the Help URL, you can specify the path to the local file to view the Help without connecting to the Internet.

Note

- By clicking [Help] in the header area, the contents of Help appear.
- By clicking "?", the Help icon in the display area, Help for the setting items in the display area appears.

Downloading Help

- 1** In the [OS] list, select the operating system.
- 2** In the [Language] list, select the language.
- 3** Click [Download].
- 4** Download Help by following the instructions on the screen.
- 5** Store the downloaded compressed file in a location, and then decompress the file.

To view the downloaded Web Image Monitor Help, set the path to the location of the decompressed file.

Linking the URL of the Help File to the [Help] Button.

You can link the URL of the help file on a computer or Web server to the [Help] button.

- 1** Log on to Web Image Monitor in the administrator mode.
- 2** In the menu area, click [Configuration].
- 3** Click [Webpage].
- 4** In the [Help URL] box, enter the URL of the help file.

If you saved the help file to "C:\HELP\EN", enter "file://C:/HELP/". For example, if you saved the file to a Web server, and the URL of the index file is "http://a.b.c.d/HELP/EN/index.html", enter "http://a.b.c.d/HELP/".

- 5** Click [Apply].

Using SmartDeviceMonitor for Admin

Using SmartDeviceMonitor for Admin, you can monitor the network printers. Also, you can change the configuration of the network interface board using TCP/IP or IPX/SPX.

❖ Protocol stack provided with Operating System

- Windows 95/98/Me
TCP/IP
IPX/SPX
NetWare
NetWare Client32 for Windows 95
IntraNetWare Client for Windows 95
Novell Client for Windows 95/98/Me
- Windows 2000
TCP/IP
IPX/SPX
NetWare
Novell Client for Windows NT/2000/XP
- Windows Server 2003
TCP/IP
IPX/SPX
- Windows XP
TCP/IP
IPX/SPX
Novell Client for Windows NT/2000/XP
- Windows NT 4.0
TCP/IP
IPX/SPX
Client Service for NetWare
NetWare Client32 for Windows NT
IntraNetWare Client for Windows NT
Novell Client for Windows NT/2000/XP

❖ Available operations

The following functions are available:

- Limits settings done from the control panel, and disables changes made to certain items.
- Enables selection of paper type loaded in the machine.
- Switches to, and comes out of Energy Saver mode.
- Checks information about printing, paper quantity, etc.
- Simultaneously monitors multiple printers. When there are many printers, you can create groups and classify printers to facilitate management.
- Checks the machine's network settings and detailed device information.
- Enables you to change the machine's network settings.
- You can check details of print jobs sent from a computer.
- Allows you to check job histories of printed, faxed (LAN-Fax), scanned, and photocopied documents identified by user codes.
- Allows selection of functions such as printing and scanning for each user code.
- Fax numbers and e-mail addresses stored in the machine can be changed and saved by computer.
- You can check each fax job history entry.
- You can make settings for and display the status changes of group devices.
- Using Address Management Tool, you can manage LAN-Fax numbers, user names for Scan to Folder, and addresses for sending and receiving Internet faxes.
- The e-mail sender's name and folder can be protected.

Installing SmartDeviceMonitor for Admin

Follow the procedure below to install SmartDeviceMonitor for Admin

1 Quit all applications currently running.

2 Insert the CD-ROM into the CD-ROM drive.

The installer starts.

Note

- Auto Run may not work under certain operating system settings. In this case, launch "Setup.exe" located on the CD-ROM root directory.

3 Select an interface language, and then click [OK].

The following languages are available: Czech, Danish, German, English, Spanish, French, Italian, Hungarian, Dutch, Norwegian, Polish, Portuguese, Finnish, Swedish, Chinese Simple and Chinese Traditional.

4 Click [SmartNetMonitor for Client/Admin] installation, and then click [Next].

5 The software license agreement appears in the [License Agreement] dialog box.

After reading through its contents, click [I accept the agreement] if you agree, and then click [Next >].

6 Follow the instructions on the screen.

A message appears when the installation is complete.

7 Click [OK].

Note

- If you are required to restart the computer after installing SmartDeviceMonitor for Admin, restart the computer and continue the configuration.

Changing the Network Interface Board Configuration

Follow the procedure below to change the network interface board configuration using SmartDeviceMonitor for Admin.

1 Start SmartDeviceMonitor for Admin.

2 On the [Group] menu, point to [Search Device], and then click [TCP/IP], [IPX/SPX] or [TCP/IP(SNMPv3)]. A list of machines using the selected protocol appears.

Note

- Select the protocol of the machine whose configuration you want to change.
- If you are using TCP/IP SNMP v3, enter the user authentication.

3 In the list, select a machine whose configuration you want to change.

4 On the [Tools] menu, click [NIB Setup Tool].

A Web browser opens and the dialog box for entering the user name and password for the Web Image Monitor administrator appears.

For details about the user name and password, consult your network administrator.

NIB Setup Tool starts when the network interface board is default. Click [Web Browser], and then click [OK].

5 Enter required setting items.

Configure settings using Web Image Monitor. For details, see p.69 "Using Web Image Monitor".

6 Quit Web Image Monitor.

7 Quit SmartDeviceMonitor for Admin.

Locking the Menus on the Machine's Control Panel

Follow the procedure below to lock the menus on the machine's control panel.

1 Start SmartDeviceMonitor for Admin.

2 On the [Group] menu, point to [Search Device], and then click [TCP/IP], [IPX/SPX] or [TCP/IP(SNMPv3)].

A list of machines using the selected protocol appears.

Note

- Select the protocol of the machine whose configuration you want to change.
- If you are using TCP/IP SNMP v3, enter the user authentication.

3 Select a machine.

4 On the [Tools] menu, point to [Device Settings], and then click [Lock Operation Panel Menu].

A Web browser opens and the dialog box for entering the password for the Web Image Monitor administrator appears.

5 Enter the user name and password, and then click [OK].

For details about the user name and password, consult your network administrator.

The [System] page of Web Image Monitor appears.

6 Select [Level 1] or [Level 2] in the [Protect Printer Operation Panel] list.

7 Click [Apply].

8 Quit Web Image Monitor.

Reference

For details about setting items, see Help in the [General Settings] on [Configuration] page.

Changing the Paper Type

Follow the procedure below to change the paper type.

1 Start SmartDeviceMonitor for Admin.

2 On the [Group] menu, point to [Search Device], and then click [TCP/IP], [IPX/SPX] or [TCP/IP(SNMPv3)].

A list of machines using the selected protocol appears.

Note

- Select the protocol of the machine whose configuration you want to change.
- If you are using TCP/IP SNMP v3, enter the user authentication.

3 In the list, select a machine whose configuration you want to change.

4 On the [Tools] menu, point to [Device Settings], and then click [Select Paper Type].

A Web browser opens and the dialog box for entering the password for the Web Image Monitor administrator appears.

5 Enter the user name and password, and then click [OK].

For details about the user name and password, consult your network administrator.

The [Paper] page appears.

6 Select a paper type in the [Paper Type] list for each tray.

7 Click [Apply].

8 Quit Web Image Monitor.

Reference

For details about setting items, see Help in the [General Settings] on [Configuration] page.

Managing User Information

Follow the procedure below to manage the user's information using SmartDeviceMonitor for Admin.

Prints jobs can be managed and functions restricted by user codes.

Starting User Management Tool

Follow the procedure below to start User Management Tool.

- 1** Start SmartDeviceMonitor for Admin.
- 2** On the [Group] menu, point to [Search Device], and then click [TCP/IP], [IPX/SPX] or [TCP/IP(SNMPv3)].

A list of machines using the selected protocol appears.

Note

- Select the protocol of the machine whose configuration you want to change.
- If you are using TCP/IP SNMP v3, enter the user authentication.

- 3** In the list, select a machine you want to manage.

- 4** On the [Tools] menu, click [User Management Tool].

The dialog box for entering the user name and password appears.

- 5** Enter the user name and password, and then click [OK].

For details about the user name and password, consult your network administrator.

User Management Tool starts.

Reference

For details about User Management Tool, see SmartDeviceMonitor for Admin Help.

Displaying the Number of Sheets Printed

Follow the procedure below to display the number of sheets printed under each user code.

- 1** Start SmartDeviceMonitor for Admin User Information Management Tool.

- 2** Click the [User Page Count] tab of User Management Tool.

The number of pages printed under each user code appears.

- 3** Click [Finish] on the [File] menu to quit User Management Tool.

Exporting the information about the number of pages printed

Follow the procedure below to export the information of the number of pages printed under each user code as a .csv file.

- 1** Start SmartDeviceMonitor for Admin User Information Management Tool.

- 2** Click the [User Page Count] tab of User Management Tool.

- 3** On the [File] menu, click [Export User Statics List].

- 4** Specify the save location and file name, and then click [Save].

- 5** Click [Finish] on the [File] menu to quit User Management Tool.

Resetting the number of pages printed to 0.

Follow the procedure below to reset the number of pages printed under each user code to 0.

- 1** Start SmartDeviceMonitor for Admin User Information Management Tool.
- 2** Click the [User Page Count] tab of User Management Tool.
- 3** Click the user whose information you want to reset.
- 4** On the [Edit] menu, click [Reset User Counters].
- 5** Select the check box of the items you want to reset, and then click [OK].
A confirmation message appears.
- 6** Click [Yes].
The number of pages printed is reset to 0.
- 7** On the [Edit] menu, click [Apply Settings].
Changes are applied to information on the [User Page Count] tab.
- 8** Click [Finish] on the [File] menu to quit User Management Tool.


Restricting Functions

Follow the procedure below to restrict use of individual functions.

- 1** Start SmartDeviceMonitor for Admin User Information Management Tool.
- 2** On the [Edit] menu of User Management Tool, click [Restrict Access To Device].
- 3** Select the check box of the functions you want to restrict.
- 4** Click [OK].
A confirmation message appears.
- 5** Click [Yes].
The settings are applied.

Setting Applicable Functions to New Users

Follow the procedure below to add new users and set functions applicable to them.


- 1** Start SmartDeviceMonitor for Admin User Information Management Tool.
 - 2** Click the [Access Control List] tab of User Management Tool.
 - 3** On the [Edit] menu, click [Add New User].
 - 4** Enter the user code and user name.
 - 5** Select the check box of the functions applicable to the new user.
-  **Note**
- If the check boxes are unavailable, there is no restriction to use that function. For details, see SmartDeviceMonitor for Admin Help.
- 6** Click [OK].
The new user is added.
 - 7** On the [Edit] menu, click [Apply Settings].
The settings are applied.
 - 8** Click [Finish] on the [File] menu to quit User Management Tool.

Reference

For details about setting restrictions, see SmartDeviceMonitor for Admin Help.

Configuring the Energy Saver Mode

Follow the procedure below to configure Energy Saver mode.

- 1** Start SmartDeviceMonitor for Admin.
 - 2** On the [Group] menu, point to [Search Device], and then click [TCP/IP], [IPX/SPX] or [TCP/IP(SNMPv3)].
A list of machines using the selected protocol appears.
-  **Note**
- Select the protocol of the machine whose configuration you want to change.
 - If you are using TCP/IP SNMP v3, enter the user authentication.
- 3** Select the machine whose settings you want to make.
To make settings for all machines in the selected group, select no machine.
 - 4** On the [Group] menu, point to [Energy Save Mode], point to [Set Individually] to make the settings for only the selected machine or point to [Set By Group] to make the settings for all machines in the selected group, and then click [On] or [Off].
 - 5** Quit SmartDeviceMonitor for Admin.

Reference

For details about the setting value for Energy Saver mode, see SmartDeviceMonitor for Admin Help.

Setting a Password

Follow the procedure below to set a password.

- 1** Start SmartDeviceMonitor for Admin.
- 2** On the [Group] menu, point to [Search Device], and then click [TCP/IP], [IPX/SPX] or [TCP/IP(SNMPv3)].

A list of machines using the selected protocol appears.

Note

- Select the protocol of the machine whose configuration you want to change.
- If you are using TCP/IP SNMP v3, enter the user authentication.

- 3** In the list, select a machine whose configuration you want to change.

- 4** On the [Tools] menu, click [NIB Setup Tool].

A Web browser opens and the dialog box for entering the password for the Web Image Monitor administrator appears.

NIB Setup Tool starts when the network interface board is default. Click [Web Browser], and then click [OK].

- 5** Enter the user name and password, and then click [OK].

For details about the user name and password, consult your network administrator.

Top Page of Web Image Monitor appears.

- 6** Click [Configuration].
- 7** Click [Device Settings].
- 8** Click [Program/Change Administrator].
- 9** Click [Change].

- 10** On the [New Password], enter a password.

Enter the same password in [Confirm Password] .

- 11** Click [OK].

- 12** Quit Web Image Monitor.

- 13** Quit SmartDeviceMonitor for Admin.

Checking the Machine Status

Follow the procedure below to check machine status.

1 Start SmartDeviceMonitor for Admin.

2 On the [Group] menu, point to [Search Device], and then click [TCP/IP], [IPX/SPX] or [TCP/IP(SNMPv3)].

The status of machines is indicated by icons in the list.

Note

- For details about status icons, see SmartDeviceMonitor for Admin Help.
- If you are using TCP/IP SNMP v3, enter the user authentication.

3 To obtain status details, click the machine in the list, and then click [Open] on the [Device] menu.

The machine status appears in the dialog box.

4 Quit SmartDeviceMonitor for Admin.

Note

- For details about items in the dialog box, see SmartDeviceMonitor for Admin Help.

Changing Names and Comments

Follow the procedure below to change the names and comments of the machine.

1 Start SmartDeviceMonitor for Admin.

2 On the [Group] menu, point to [Search Device], and then click [TCP/IP], [IPX/SPX] or [TCP/IP(SNMPv3)].

A list of machines using the selected protocol appears.

Note

- Select the protocol of the machine whose configuration you want to change.
- If you are using TCP/IP SNMP v3, enter the user authentication.

3 Select a machine in the list.

4 On the [Tools] menu, click [NIB Setup Tool].

A Web browser opens and the dialog box for entering the password for the Web Image Monitor administrator appears.

NIB Setup Tool starts when the network interface board is default. Click [Web Browser], and then click [OK].

5 Enter the user name and password, and then click [OK].

Top Page of Web Image Monitor appears.

For details about the user name and password, consult your network administrator.

6 Click [Configuration].

7 Click [Device Settings].

8 On the [System] page, enter the device name in the [Device name:] box and a comment in the [Comment] box, and click [Apply].

- In the [Device name:] box, enter a device name on the machine using up to 31 characters.
- In the [Comment] box, enter a comment on the machine using up to 31 characters.

9 Click [OK].

10 Quit Web Image Monitor.

11 Quit SmartDeviceMonitor for Admin.

Load Fax Journal

1 Start SmartDeviceMonitor for Admin.

2 On the [Group] menu, point to [Search Device], and then click [TCP/IP], [IPX/SPX] or [TCP/IP(SNMPv3)].

A list of machines using the selected protocol appears.

 **Note**

- Select the protocol of the machine whose configuration you want to change.
- If you are using TCP/IP SNMP v3, enter the user authentication.

3 Select a machine.

4 On the [Tools] menu, click [Load Fax Journal].

A Web browser opens and the dialog box for entering the user name and password for the Web Image Monitor administrator appears.

For details about the user name and password, consult your network administrator.

5 Check the Load Fax Journal area that appears in the Web Image Monitor.

 **Reference**

For details, see Help in Load Fax Journal area.

Viewing and Deleting Spool Print Jobs

1 Start SmartDeviceMonitor for Admin.

2 On the [Group] menu, point to [Search Device], and then click [TCP/IP], [IPX/SPX] or [TCP/IP(SNMPv3)].

A list of machines using the selected protocol appears.

Note

- Select the protocol of the machine whose configuration you want to change.
- If you are using TCP/IP SNMP v3, enter the user authentication.

3 Select a machine.

4 On the [Tools] menu, click [Spool Printing Job List(Printer)].

A Web browser opens and the dialog box for entering the user name and password for the Web Image Monitor administrator appears.

For details about the user name and password, consult your network administrator.

5 Check the Spool Printing Job List that appears in the Web Image Monitor.

To delete the Spool Printing Job, select the document you want to delete and then click [Delete].

Note

- To display Spool Printing Job List, spool must be set to [Enable] on Web Image Monitor in advance.

Reference

For details, see Help in Spool Printing Job List area.

Managing Address Information

1 Start SmartDeviceMonitor for Admin.

2 On the [Group] menu, point to [Search Device], and then click [TCP/IP], [IPX/SPX] or [TCP/IP(SNMPv3)].

A list of machines using the selected protocol appears.

Note

- Select the protocol of the machine whose configuration you want to change.
- If you are using TCP/IP SNMP v3, enter the user authentication.

3 Select a machine.

4 On the [Tools] menu, click [Address Management Tool].

The dialog box for entering the user name and password appears.

5 Enter the user name and password, and then click [OK].

Address Management Tool starts.

For details about the user name and password, consult your network administrator.

Reference

For details, see Address Management Tool Help.

Using SmartDeviceMonitor for Client

To view the status of machines using SmartDeviceMonitor for Client, configure SmartDeviceMonitor for Client beforehand.

Monitoring Printers

Follow the procedure below to monitor the machine using SmartDeviceMonitor for Client.

4

1 Start SmartDeviceMonitor for Client.

The SmartDeviceMonitor for Client icon appears in the task tray.

2 Right-click the SmartDeviceMonitor for Client icon, and check that the machine appears on the pop-up menu.

3 Click [Options...] on the pop-up menu if the machine does not appear on the pop-up menu.

The [SmartDeviceMonitor for Client - Options] dialog box appears.

4 Click the machine you want to monitor, and then select the [To Be Monitored] check box in the [Monitoring Information Settings] area.

Note

- To display the machine status in the task tray using the SmartDeviceMonitor for Client icon, select the [Displayed on Task Bar] check box.
- For details about status icons, see SmartDeviceMonitor for Client Help.

5 Click [OK].

The dialog box closes and the configured machine is monitored.

Checking the Machine Status

Follow the procedure below to check machine status using SmartDeviceMonitor for Client.

1 Start SmartDeviceMonitor for Client.

2 For status details, right-click the SmartDeviceMonitor for Client icon, and then click the machine.

The machine status appears in the dialog box.

Note

- For details about items in the dialog box, see SmartDeviceMonitor for Client Help.

When Using IPP with SmartDeviceMonitor for Client

When using IPP with SmartDeviceMonitor for Client, note the following:

- The network printer can only receive one print job from SmartDeviceMonitor for Client at a time. While the network printer is printing, another user cannot access it until the job is finished. In this case, SmartDeviceMonitor for Client tries to access the network printer until the retry interval expires.
- If SmartDeviceMonitor for Client cannot access the network printer and times out, it will stop sending the print job. In this case, you should cancel the paused status from the print queue window. SmartDeviceMonitor for Client will resume access to the network printer. You can delete the print job from the print queue window, but canceling a print job printed by the network printer might cause the next job sent from another user to be incorrectly printed.
- If a print job sent from SmartDeviceMonitor for Client is interrupted and the network printer cancels the job because something went wrong, send the print job again.
- Print jobs sent from another computer do not appear in the print queue window, regardless of protocol.
- If various users send print jobs using SmartDeviceMonitor for Client to network printers, the printing order might not be the same as that in which the jobs were sent.
- An IP address cannot be used for the IPP port name because the IP address is used for the SmartDeviceMonitor for Client port name.
- When setting SSL, a protocol for encrypted communication, under environment which server authentication is issued, enter "https://(machine's address)/". Internet Explorer must be installed on your computer. Use the highest version. Internet Explorer 6.0 or higher is recommended.
- If the **[Security Alert]** dialog box appears when accessing the machine using IPP to create or configure an IPP port, or when printing, install the certificate. To select the certificate store location when using Certificate Import Wizard, click **[Place all certificates in the following store]**, and then click **[Local Computer]** under **[Trusted Root Certification Authorities]**.

Note

- For details about SSL settings, consult your network administrator.

Remote Maintenance by telnet

Important

- Remote Maintenance should be password-protected so that access is allowed to administrators only.
- The password is the same as the one of Web Image Monitor administrator. When the password is changed using "mshell", other passwords change also.
- Some command cannot be set depending on the model type.

Using telnet

Follow the procedure below to use telnet.

Important

- Only one user at a time can log on to perform remote maintenance.

1 Use the IP address or the host name of the machine to start telnet.

```
% telnet IP_address
```

2 Enter your user name and password.

For details about the user name and password, consult your network administrator.

Note

- For user authentication, enter a login user name and password, and then click **[OK]**.
- For user code authentication, enter a user code in **[User Name]**, and then click **[OK]**.

3 Enter a command.

4 Quit telnet.

```
msh> logout
```

The configuration message about saving the changes appears.

5 Enter "yes" to save the changes, and then press the **[# Enter]** key.

If you do not want to save the changes, enter "no", and then press the **[# Enter]** key. To make further changes, enter "return" at the command line, and then press the **[# Enter]** key.

Note

- If the message "Can not write NVRAM information" appears, the changes are not saved. Repeat the procedure above.
- When the changes are saved, the network interface board is reset automatically with that changes.
- When the network interface board resets, the print job in print process will be printed. However, print jobs in queue will be canceled.

access

Use the “access” command to view and configure access control. You can also specify two or more access ranges.

❖ View settings

```
msh> access
```

❖ Configuration

```
msh> access ☆ range "start-address end-address"
```

- ☆ represents a target number between 1 and 5. (Up to five access ranges can be registered and selected.)

Example: to specify accessible IP addresses between 192.168.0.10 and 192.168.0.20:

```
msh> access 1 range 192.168.0.10 192.168.0.20
```

❖ Access control initialization

```
msh> access flush
```

- Use the “flush” command to restore the default settings so that all access ranges become “0.0.0.0”.

Note

- ❑ The access range restricts computers from use of the machine by IP address. If you do not need to restrict printing, make the setting “0.0.0.0”.
- ❑ Valid ranges must be from lower (start address) to higher (end address).
- ❑ Up to five access ranges can be specified. The entry is invalid if the target number is omitted.
- ❑ You cannot access Web Image Monitor from a restricted IP address.

appletalk

Use the “appletalk” command to view and configure Appletalk parameters.

❖ View settings

```
msh> appletalk
```

- [2] means “active” and [0] means “inactive”.
- The default is [2].

❖ Changing PAP timeout configuration

```
msh> appletalk ptimeout value > 0
```

- Timeout value becomes effective.

```
msh> appletalk ptimeout value = 0
```

- Timeout value becomes ineffective.

autonet

Use the "autonet" command to configure AutoNet parameters.

❖ **View settings**

The following command displays the current AutoNet settings:

```
msh> autonet
```

❖ **Configuration**

You can configure AutoNet settings.

```
msh> autonet {on|off}
```

- {on} means "active" and {off} means "inactive".

❖ **Current interface priority configuration display**

```
msh> autonet priority
```

❖ **Interface priority configuration**

```
msh> autonet priority "interface_name"
```

- You can give interface's AutoNet parameter priority.
- Priority settings are available when multiple interfaces are installed.
- ip1394 can be specified only when the IEEE 1394 interface is installed.
- wlan can be specified only when the IEEE 802.11b interface is installed.

Interface name	Interface configured
ether	Ethernet interface
ip1394	IEEE 1394 interface
wlan	IEEE 802.11b interface

 **Note**

- ❑ If an interface is not selected, the current interface connection settings remain in effect.

btconfig

Use the "btconfig" command to make Bluetooth settings.

❖ **View settings**

Bluetooth settings are displayed.

```
msh> btconfig
```

❖ **Mode settings**

You can set the Bluetooth operation mode to {private} or {public}.

```
msh> btconfig {private | public}
```

- The default is {public}.

devicename

Use the "devicename" command to display and change the printer name.

❖ **View settings**

```
msh> devicename
```

❖ **Printer name configuration**

```
msh> devicename name "string"
```

- Enter a printer name using up to 31 alphanumeric characters.
- Set single names for each printer.

❖ **Printer name initialization**

```
msh> devicename clear name
```

- Reset the printer name to its default.

dhcp

Use the "dhcp" command to configure DHCP settings.

❖ View settings

The following command displays the current DHCP settings.

```
msh> dhcp
```

❖ Configuration

You can configure DHCP.

```
msh> dhcp "interface_name"
{on|off}
```

- Click {on} to enable dhcp. Click {off} to disable DHCP.
- If the DNS server address and domain name are obtained from DHCP, be sure to click {on}.
- ip1394 can be specified only when the IEEE 1394 interface is installed.
- wlan can be specified only when the IEEE 802.11b interface is installed.

Interface name	Interface configured
ether	Ethernet interface
ip1394	IEEE 1394 interface
wlan	IEEE 802.11b interface

❖ Current interface priority configuration display

```
msh> dhcp priority
```

❖ Interface priority configuration

```
msh> dhcp priority
"interface_name"
```

- You can select which interface has DHCP parameter priority.
- Priority settings are available when multiple interfaces are installed.

❖ DNS server address selection

```
msh> dhcp dnsaddr {dhcp |
static}
```

- Specify whether to obtain the DNS server address from the DHCP server or use the address set by a user.
- To obtain the DNS server address from the DHCP server, specify "dhcp". To use the address set by a user, specify "static".

❖ Domain name selection

```
msh> dhcp domainname {dhcp
| static}
```

- Specify whether to obtain the domain name from the DNS server or use the domain name set by a user.
- To obtain the domain name from the DHCP server, specify "dhcp". To use the domain name set by a user, specify "static".

🔍 Reference

For details about DHCP functions, see p.139 "Using DHCP".

For details about setting the DNS server address, see p.92 "dns".

For details about setting the domain name, see p.93 "domain-name".

diprint

The direct printing port enables direct printing from a network-connected computer.

Use the “diprint” command to change direct printing port settings.

❖ View settings

The following command displays the current direct printing port settings:

```
msh> diprint
Example output:
port 9100
timeout=300(sec)
bidirect on
```

- The “port” specifies the port number of the direct printing port.
- The “bidirect” setting indicates whether the direct printing port is bidirectional or not.

❖ Setting timeout

```
msh> diprint timeout {30-65535}
```

- You can specify the timeout interval to use when the printer is expecting data from the network.
- The default is 300 seconds.

❖ Setting bidirect

```
msh> diprint bidirect { on | off }
```

- You can specify whether the direct printing port is bidirectional or not.

dns

Use the “dns” command to configure or display DNS (Domain Name System) settings.

❖ View settings

The following command displays current DNS settings:

```
msh> dns
```

❖ DNS server configuration

The following command enables or disables the DNS server address:

```
msh> dns "number" server "server address"
```

The following command displays a configuration using the IP address 192.168.15.16 on a DNS 1 server:

```
msh> dns 1 server 192.168.15.16
```

- You can register up to three DNS server numbers.
- You cannot use “255.255.255.255” as the DNS server address.

❖ Dynamic DNS function setting

```
msh> dns "interface_name" ddns {on|off}
```

- You can set the dynamic DNS function “active” or “inactive”.
- {on} means “active” and {off} means “inactive”.
- ip1394 can be specified only when the IEEE 1394 interface is installed.
- wlan can be specified only when the IEEE 802.11b interface is installed.

Interface name	Interface configured
ether	Ethernet interface
ip1394	IEEE 1394 interface
wlan	IEEE 802.11b interface

❖ Specifying the record overlap operation

```
msh> dns overlap {update|add}
```

- You can specify operations performed when records overlap.
- update
To delete old records and register new records.
- add
To add new records and store the old records.
- When CNAME overlaps, it is always changed, irrespective of settings.

❖ CNAME registration

```
msh> dns cname {on|off}
```

- You can specify whether to register CNAME.
- {on} means "active" and {off} means "inactive".
- The CNAME registered is the default name beginning with rnp. CNAME cannot be changed.

❖ A records registration

```
msh> dns arecord {dhcp|own}
```

- {dhcp}
You can specify the method of registering an A record when the dynamic DNS function is enabled and DHCP is used.
- {own}
To register an A record using the printer as the DNS client. The DNS server address and the domain name already designated are used for the registration.

❖ Record updating interval settings

```
msh> dns interval "time"
```

- You can specify the interval after which records are updated when using the dynamic DNS function.
- The updating interval is specified hourly. It can be entered between 1 and 255 hours.
- The default is 24 hours.

domainname

Use the "domainname" command to display or configure the domain name settings.

You can configure the Ethernet interface, IEEE 1394 interface, or IEEE 802.11b interface.

❖ View settings

The following command displays the current domain name:

```
msh> domainname
```

❖ Interface domain configuration

```
msh> domainname "interface_name"
```

❖ **Setting the Domain Name**

```
msh> domainname "interface_
name" name "domain name"
```

- A domain name can be entered using up to 63 alphanumeric characters.
- The Ethernet interface and IEEE 802.11b interface will have the same domain name.
- ip1394 can be specified only when the IEEE 1394 interface is installed.
- wlan can be specified only when the IEEE 802.11b interface is installed.

Interface	Interface set
ether	Ethernet interface
ip1394	IEEE 1394 interface
wlan	IEEE 802.11b interface

❖ **Deleting the Domain Name**

```
msh> domainname "interface_
name" clear name
```

help

Use the "help" command to display the available command list and the procedures for using those commands.

❖ **Command list display**

```
msh> help
```

❖ **Display of procedure for using commands**

```
msh> help "command_name"
```

hostname

Use the "hostname" command to change the printer name.

❖ **View settings**

```
msh> hostname
```

❖ **Configuration**

```
msh> hostname "interface_
name " "printer_name"
```

- Enter the printer name using up to 63 alphanumeric characters.
- You cannot use a printer name starting with "RNP" or "rnp".
- The Ethernet interface and IEEE 802.11b interface will have the same printer name.
- ip1394 can be specified only when the IEEE 1394 interface is installed.
- wlan can be specified only when the IEEE 802.11b interface is installed.

Interface name	Interface configured
ether	Ethernet interface
ip1394	IEEE 1394 interface
wlan	IEEE 802.11b interface

❖ **Initializing the printer name for each interface**

```
msh> hostname "interface_
name" clear name
```

ifconfig

Use the "ifconfig" command to configure TCP/IP (IP address, subnet mask, broadcast address, default gateway address) for the printer.

❖ View settings

```
msh> ifconfig
```

❖ Configuration

```
msh> ifconfig "interface_
name" "parameter" "ad-
dress"
```

- If you did not enter an interface name, it is automatically set to the Ethernet interface.
- ip1394 can be specified only when the IEEE 1394 interface is installed.
- wlan can be specified only when the IEEE 802.11b interface is installed.

Interface name	Interface configured
ether	Ethernet Interface
ip1394	IEEE 1394 interface
wlan	IEEE 802.11b interface

❖ Netmask configuration

```
msh> ifconfig "interface_
name" netmask "address"
```

❖ Broadcast address configuration

```
msh> ifconfig "interface_
name" broadcast "address"
```

❖ Changing the Interface

```
msh> ifconfig "interface" up
```

- You can specify either the Ethernet interface or IEEE 802.11b interface when using the optional IEEE 802.11b interface unit.
You cannot specify the IEEE 1394 interface.

The following explains how to configure an IP address 192.168.15.16 on Ethernet interface.

```
msh> ifconfig ether 192.168.
15.16
```

The following explains how to configure a subnet mask 255.255.255.0 on Ethernet interface.

```
msh> ifconfig ether net-
mask 255.255.255.0
```

Note

- To get the above addresses, contact your network administrator.
- Use the default configuration if you cannot obtain setting addresses.
- The IP address, subnet mask and broadcast address are the same as that for the ethernet interface and IEEE 802.11b interface.
- When installing the optional 1394 Interface board, set the IP address and subnet mask so that it does not overlap with the ethernet interface or the IEEE 1394 interface.
- TCP/IP configuration is the same for both Ethernet and IEEE 802.11b interface. If interfaces are changed, the new interface inherits the configuration.
- Use "0x" as the initial two letters of a hexadecimal address.

info

Use the "info" command to display printer information such as paper tray, output tray, and printer language.

❖ Printer information display

```
msh> info
```

Reference

For details about displayed contents, see p.112 "Getting Printer Information over the Network".

ipp

Use the "ipp" command to configure IPP settings.

❖ Viewing settings

The following command displays the current IPP settings:

```
msh> ipp
```

Example output:

```
timeout = 900(sec)
auth = basic
```

- The "timeout" setting specifies how many seconds the computer tries to send print jobs when no connection can be made to the network printer.
- The "auth" setting indicates the user authorization mode.

❖ IPP timeout configuration

Specify how many seconds the computer waits before canceling an interrupted print job. The time can be entered between 30 to 65535 seconds.

```
msh> ipp timeout {30 - 65535}
```

❖ IPP user authorization configuration

Use IPP user authorization to restrict users to print with IPP. The default is "off".

```
msh> ipp auth {basic|digest|off}
```

- User authorization settings are "basic" and "digest".
- Use "off" to remove a user's authorization.
- If user authorization is specified, register a user name. You can register up to 10 users.

❖ IPP user configuration

Use the following command:

```
msh> ipp user
```

The following message appears:

```
msh> Input user number (1 to 10):
```

Enter the number, user name, and password.

```
msh> IPP user name:user1
```

```
msh> IPP password:*****
```

After configuring the settings, the following message appears:

```
User configuration changed.
```

netware

Use the "netware" command to configure the NetWare settings such as the print server name or file server name.

❖ Netware Printer Server Names

```
msh> netware pname
```

- Enter the NetWare print server name using up to 47 characters.

❖ Netware File Server Names

```
msh> netware fname
```

- Enter the NetWare file server name using up to 47 characters.

❖ Encap type

```
msh> netware encap
{802.3|802.2|snap|etherne
t2|auto}
```

❖ Remote Printer Number

```
msh> netware rnum
```

❖ Timeout

```
msh> netware timeout
```

❖ Printer server mode

```
msh> netware mode pserver
msh> netware mode ps
```

❖ Remote printer mode

```
msh> netware mode rprinter
msh> netware mode rp
```

❖ NDS context name

```
msh> netware context
```

❖ SAP interval

```
msh> netware "sap_interval"
```

❖ Setting login mode for file server

```
msh> netware login server
```

❖ Setting login mode for NDS tree

```
msh> netware login tree
```

❖ Setting login mode for NDS tree name

```
msh> netware tree "NDS name"
```

passwd

Use the "passwd" command to change the remote maintenance password.

❖ Changing the Password

```
msh> passwd
```

- Enter the current password.
- Enter the new password.
- Enter the new password once again.

 **Note**

- Be sure not to forget or lose the password.
- The password can be entered using up to 32 alphanumeric characters. Passwords are case-sensitive. For example, "R" is not the same as "r".

prnlog

Use the "prnlog" command to obtain printer log information.

❖ Print logs display

```
msh> prnlog
```

- Displays 16 previous print jobs.

```
msh> prnlog "ID Number"
```

- Specify the ID number of the displayed print log information to display additional details about a print job.

 **Note**

- For details about displayed contents, see p.112 "Getting Printer Information over the Network".

rendezvous

Use the “rendezvous” command to display rendezvous-related settings.

❖ View settings

Rendezvous settings are displayed.

```
msh> rendezvous
```

❖ Current computer name display

```
msh> rendezvous cname
```

❖ Display information about the current printer location

```
msh> rendezvous location
```

❖ Rendezvous computer name setting

You can specify the rendezvous computer name.

```
msh> rendezvous cname
"computer name"
```

- The computer name can be entered using up to 63 alphanumeric characters.

❖ rendezvous Installation location information setting

You can enter information about the location where the printer is installed.

```
msh> rendezvous location
"location"
```

- Information about location can be entered using up to 32 alphanumeric characters.

❖ Setting order of priority for each protocol

- dprint

```
msh> rendezvous dprint
{0-99}
```

- lpr

```
msh> rendezvous lpr {0-99}
```

- ipp

```
msh> rendezvous ipp {0-99}
```

You can specify the order of priority for “dprint”, “lpr”, and “ipp”. Smaller numbers indicate higher priority.

❖ IP TTL setting

```
msh> rendezvous ipttl {1-255}
```

You can specify the IP TTL (the number of routers a packet can pass through).

Note

The default is 255.

❖ Resetting the computer name and location information

You can reset the computer name and location information.

```
msh> rendezvous clear {cname
| location}
```

- cname
Reset the computer name. The default computer name will be displayed when the computer is restarted.
- location
Reset the location information. The previous location information will be deleted.

❖ Interface configuration

```
msh> rendezvous linklocal
"interface_name"
```

- If many types of interface are installed, configure the interface that communicates with linklocal address.
- If you do not specify an interface, the Ethernet interface is automatically selected.
- ip1394 can be specified only when the IEEE 1394 interface is installed.
- wlan can be specified only when the IEEE 802.11b interface is installed.

Interface	Interface configured
ether	Ethernet interface
ip1394	IEEE 1394 interface
wlan	IEEE 802.11b interface

route

Use the "route" command to control the routing table.

❖ All route information display

```
msh> route
```

❖ Specified route information display

```
msh> route "destination"
```

- Specify the IP address to destination.

❖ Enabling/disabling Specified Destination

```
msh> route active {host|net}
"destination" {on | off}
```

- You can turn the specified destination on or off. Host becomes the default setting.

❖ Adding Routing Table

```
msh> route add {host|net}
"destination" "gateway"
```

- Adds a host or network route to "destination", and a gateway address to "gateway" in the table.
- Specify the IP address to destination and gateway.
- Host becomes the default setting.

❖ Setting Default Gateway

```
msh> route add default
"gateway"
```

❖ Deleting Specified destination from Routing Table

```
msh> route delete {host|net}
"destination"
```

- Host becomes the default setting.
- IP address of destination can be specified.

❖ Route Flush

```
msh> route flush
```

Note

- The maximum number of routing tables is 16.
- Set a gateway address when communicating with devices on an external network.
- The same gateway address is shared by all interfaces.

set

Use the "set" command to set the protocol information display "active" or "inactive".

❖ View settings

The following command displays protocol information (active/inactive).

```
msh> set tcpip
msh> set appletalk
msh> set netware
msh> set smb
msh> set scsiprint
```

- scsiprint is available when the optional IEEE 1394 interface board is installed.

```
msh> set ip1394
```

- ip1394 can be specified only when the IEEE 1394 interface is installed.

```
msh> set protocol
```

- When protocol is specified, information about TCP/IP, appletalk, netware, and smb appears.

```
msh> set lpr
msh> set ftp
msh> set rsh
msh> set diprint
msh> set web
msh> set snmp
msh> set ssl
msh> set nrs
msh> set rfu
msh> set ipp
msh> set http
msh> set rendezvous
```

❖ Configuration

- Enter "up" to enable protocol, and enter "down" to disable protocol.

You can set the protocol to "active" or "inactive".

```
msh> set tcpip {up | down}
```

- If you disable TCP/IP, you cannot use remote access after logging off. If you did this by mistake, you can use the control panel to enable remote access via TCP/IP.
- Disabling TCP/IP also disables ip1394, lpr, ftp, rsh, diprint, web, snmp, ssl, ipp, http, and rendezvous

```
msh> set appletalk {up | down}
```

```
msh> set netware {up | down}
```

```
msh> set smb {up | down}
```

```
msh> set scsiprint {up | down}
```

- scsiprint is available when the optional IEEE 1394 interface board is installed.

```
msh> set ip1394 {up | down}
```

- ip1394 can be specified only when the IEEE 1394 interface is installed.

```
msh> set lpr {up | down}
```

```
msh> set ftp {up | down}
```

```
msh> set rsh {up | down}
```

```
msh> set diprint {up | down}
```

```
msh> set web {up | down}
```

```
msh> set snmp {up | down}
```

```
msh> set ssl {up | down}
```

- If Secured Sockets Layer (SSL, an encryption protocol) function is not available for the printer, you cannot use the function by enabling it.

```
msh> set nrs {up | down}
msh> set rfu {up | down}
msh> set ipp {up | down}
msh> set http {up | down}
msh> set rendezvous {up | down}
```

show

Use the "show" command to display network interface board configuration settings.

❖ View settings

```
msh> show
```

- If "-p" is added, you can view settings one by one.

🔍 Reference

For details about the information displayed, see p.122 "Configuring the Network Interface Board".

slp

Use "slp" command to configure SLP settings.

```
msh> slp ttl "ttl_val"
```

- You can search the NetWare server using SLP in the PureIP environment of NetWare 5/5.1 and Netware 6/6.5. Using the "slp" command, you can configure the value of TTL which can be used by SLP multicast packet.
- The default value of TTL is 1. A search is executed only within a local segment. If the router does not support multicast, the settings are not available even if the TTL value is increased.
- The acceptable TTL value is between 1 and 255.

smb

Use the “smb” command to configure or delete the computer or workgroup name for SMB.

❖ Computer Name settings

```
msh> smb comp
```

- Set computer name using up to 15 characters. Names beginning with "RNP" or "rnp" cannot be entered.

❖ Working Group Name settings

```
msh> smb group
```

- Set workgroup name using up to 15 characters

❖ Comment settings

```
msh> smb comment
```

- Set comment using up to 31 characters

❖ Notify print job completion

```
msh> smb notif {on | off}
```

- To notify print job completion, specify “on”. Otherwise, specify “off”

❖ Deleting Computer Name

```
msh> smb clear comp
```

❖ Deleting Group Name

```
msh> smb clear group
```

❖ Deleting Comment

```
msh> smb clear comment
```

❖ Protocol settings

```
msh> smb protocol [netbeui  
{up | down} | tcpip {up |  
down}]
```

- Enable or disable NetBEUI and TCP/IP. Specify “up” to enable, and “down” to disable.

snmp

Use the “snmp” command to display and edit SNMP configuration settings such as the community name.

❖ View settings

```
msh> snmp
```

- Default access settings 1 is as follows:
Community name:public
IP address:0.0.0.0
Access type:read-only / trap off
- Default access settings 2 is as follows:
Community name:admin
IP address:0.0.0.0
Access type:read-write / trap off
- If “-p” is added, you can view settings one by one.
- To display the current community, specify its registration number.

❖ Display

```
msh> snmp ?
```

❖ Community name configuration

```
msh> snmp "number" name  
"community_name"
```

- You can configure ten SNMP access settings numbered 1-10.
- The printer cannot be accessed from SmartDeviceMonitor for Admin or SmartDeviceMonitor for Client if “public” is not registered in numbers 1-10. When changing the community name, use SmartDeviceMonitor for Admin and SNMP Setup Tool to correspond with printer settings.
- The community name can be entered using up to 15 characters.

❖ **Deleting community name**

```
msh> snmp "number" clear
name
```

❖ **Access type configuration**

```
msh> snmp "number" type
"access_type"
```

Access type	Type of access permission
no	not accessible
read	read only
write	read and write
trap	user is notified of trap messages

❖ **Protocol configuration**

```
msh> snmp {ip | ipx} {on | off}
```

- Use the following command to set protocols "active" or "inactive": If you set a protocol "inactive", all access settings for that protocol are disabled.
- Specify "ip" for TCP/IP, or "ipx" for IPX/SPX.
- {on} means "active" and {off} means "inactive".
- IEEE 1394 interface is available for TCP/IP only.

❖ **Configuration of protocol for each registration number**

```
msh> snmp "number" active
{ip | ipx} {on | off}
```

- To change the protocol of access settings, use the following command. However, if you have disabled a protocol with the above command, activating it here has no effect.

❖ **Access configuration**

```
msh> snmp "number" {ip/ad-
dr | ipx} "address"
```

- You can configure a host address according to the protocol used.
- The network interface board accepts requests only from hosts that have addresses with access types of "read-only" or "read-write". Enter "0" to have network interface board accept requests from any host without requiring a specific type of access.
- Enter a host address to deliver "trap" access type information to.
- To specify TCP/IP, enter "ip" followed by a space, and then the IP address.
- To specify IPX/SPX, enter "ipx" followed by a space, the IPX address followed by a decimal, and then the MAC address of the network interface board.

❖ **sysLocation configuration**

```
msh> snmp location
```

❖ **Deleting sysLocation**

```
msh> snmp clear location
```

❖ **sysContact setting**

```
msh> snmp contact
```

❖ **Deleting sysContact**

```
msh> snmp clear contact
```

❖ **SNMP v1v2 function configuration**

```
msh> snmp v1v2 {on | off}
```

- Specify "on" to enable, and "off" to disable.

❖ **SNMP v3 function configuration**

```
msh> snmp v3 {on | off}
```

- Specify "on" to enable, and "off" to disable.

❖ **SNMP TRAP configuration**

```
msh> snmp trap {v1 | v2 | v3} {on | off}
```

- Specify "on" to enable, and "off" to disable.

❖ **Remote Configuration Authorization configuration**

```
msh> snmp remote {on | off}
```

- Specify "on" to enable, and "off" to disable.

❖ **SNMP v3 TRAP configuration display**

```
msh> snmp v3trap
```

```
msh> snmp v3trap {1- 5}
```

- If a number from 1-5 is entered, settings are displayed for that number only.

❖ **Configuring a sending address for SNMP v3 TRAP**

```
msh> snmp v3trap {1-5} {ip| ipx} "address"
```

❖ **Configuring a sending protocol for SNMP v3 TRAP**

```
msh> snmp v3trap {1-5} active {ip/addr | ipx} {on | off}
```

❖ **Configuring a user account for SNMP v3 TRAP**

```
msh> snmp v3trap {1-5} account "account_name"
```

- Enter an account name using up to 32 alphanumeric characters.

❖ **Deleting an SNMP v3 TRAP user account**

```
msh> snmp v3trap {1-5} clear account
```

❖ **Configuring an SNMP v3 encryption algorithm**

```
msh> snmp v3auth {md5 | sha1}
```

❖ **Configuring SNMP v3 encryption**

```
msh> snmp v3priv {auto | on}
```

- Set "auto" for automatic encryption configuration
- Set "on" for mandatory encryption configuration.

sntp

The printer clock can be synchronized with a NTP server clock using Simple Network Time Protocol (SNTP). Use the "sntp" command to change SNTP settings.

❖ View settings

```
msh> sntp
```

❖ NTP server address configuration

You can specify the IP address of the NTP server.

```
msh> sntp server "IP_
address"
```

❖ Interval configuration

```
msh> sntp interval "polling_
time"
```

- You can specify the interval at which the printer synchronizes with the operator-specified NTP server. The default is 60 minutes.
- The interval can be entered between 16 and 16,384 minutes.
- If you set 0, the printer synchronizes with the NTP server only when you turn the printer on. After that, the printer does not synchronize with the NTP server.

❖ Time-zone configuration

```
msh> sntp timezone "+/-
hour_time"
```

- You can specify the time difference between the printer clock and NTP server clock. Time is in 24-hour format.

spoolsw

Use the "spoolsw" command to configure Job Spool settings.

You can only specify diprint, lpr, ipp, ftp and smb protocol.

- The "spoolsw" command for configuring Job Spool settings is available only when the optional hard disk is installed.

❖ View settings

The Job Spool setting appears.

```
msh> spoolsw
```

❖ Job Spool setting

```
msh> spoolsw spool {on | off}
```

Note

- Specify "on" to enable Job Spool, or "off" to disable it.

❖ Resetting Job spool setting

```
msh> spoolsw clear job {on
| off}
```

- When the printer power is cut during job spooling, this determines whether to reprint the spooled job.

❖ Protocol configuration

```
msh> spoolsw diprint {on | off}
msh> spoolsw lpr {on | off}
msh> spoolsw ipp {on | off}
msh> spoolsw smb {on | off}
msh> spoolsw ftp {on | off}
```

- You can specify the settings for diprint, lpr, ipp, and smb.

sprint

Use the "sprint" command to make settings for IEEE 1394 (SCSI print).

❖ View settings

IEEE 1394 (SCSI print) settings are displayed.

```
msh> sprint
```

❖ Bidirectional configuration for IEEE 1394 (SCSI print)

Use this setting to set IEEE 1394 (SCSI print) bidirectional. The default is "on".

```
msh> sprint bidi {on | off}
```

status

The printer status can be checked using the following command:

❖ Messages

```
msh> status
```

🔍 Reference

For details, see p.112 "Current Printer Status"

syslog

Use the "syslog" command to display the information stored in the printer's system log.

❖ View message

```
msh> syslog
```

🔍 Reference

For details about the information displayed, see p.127 "System Log Information".

upnp

Use the "upnp" command to display and configure the universal plug and play.

❖ Public URL display

```
msh> upnp url
```

❖ Public URL configuration

```
msh> upnp "url string"
```

- Enter the URL string in the character string.

web

Use the "web" command to display and configure parameters on Web Image Monitor.

❖ View Settings

```
msh> web
```

❖ URL Configuration

You can set URLs linked by clicking [URL] on Web Image Monitor.

Specify "1" or "2" for x as the number corresponding to the URL. Up to two URLs can be registered and specified.

```
msh> web url http://"The URL or IP address you want to register"/
```

❖ Deleting URLs registered as link destinations

```
msh> web x clear url
```

Specify "1" or "2" for x as the corresponding number to the URL.

❖ Link name configuration

You can enter the name for [URL] that appears on Web Image Monitor.

Specify "1" or "2" for x as the corresponding number to the link name.

```
msh> web name "Name you want to display"
```

❖ Deleting URL names registered as link destinations

```
msh> web x clear name
```

Specify "1" or "2" for x as the number corresponding to the link name.

❖ Help URL Configuration

You can set URLs linked by clicking [Help] or [?] on Web Image Monitor.

```
msh> web help http://"Help URL or IP address"/help/
```

❖ Deleting Help URL

```
msh> web clear help
```

wiconfig

Use the "wiconfig" command to make settings for IEEE 802.11b.

❖ View settings

```
msh> wiconfig
```

❖ View IEEE 802.11b settings

```
msh> wiconfig cardinfo
```

- If IEEE 802.11b is not working correctly, its information is not displayed.

❖ Configuration

```
msh> wiconfig "parameter"
```

Parameter	Value configured
mode {ap ad-hoc 802.11adhoc}	You can set the infrastructure mode (ap), the 802.11 Ad hoc mode (802.11adhoc), or the ad hoc mode (adhoc). The default is ad hoc mode.
ssid "ID value"	You can make settings for the SSID in the infrastructure mode. Usable characters are ASCII 0x20-0x7e (32 bytes). An SSID value is set automatically to the nearest access point if no setting is made. If no setting is made for the ad hoc mode, the same value as for the infrastructure mode or an ASSID value is automatically set.

Parameter	Value configured
channel frequency "channel no."	You can enable or disable the WEP function. To enable the WEP function, specify [on]; to disable it, specify [off]. To start the WEP function, enter the correct WEP key.
enc {on off}	You can enable or disable the WEP function. To enable the WEP function, specify [on]; to disable it, specify [off]. To start the WEP function, enter the correct WEP key.

Parameter	Value configured
key { "key value" } val {1 2 3 4}	You can specify the WEP key when entering in hexadecimal. With a 64-bit WEP, you can use 10 digit hexadecimal. With a 128-bit WEP, you can use 26 digit hexadecimal. Up to four WEP keys can be registered. Specify the number to be registered with "val". When a WEP is specified by key, the WEP specified by key phrase is overwritten. To use this function, set the same key number and WEP key for all ports that transmit data to each other. You can omit the numbers with "val". The key number is set to 1 when making these omissions.

Parameter	Value configured
keyphrase { "phrase" } val {1 2 3 4}	<p>You can specify the WEP key when entering in ASCII.</p> <p>With a 64-bit WEP, you can use 10 digit hexadecimals.</p> <p>With a 128-bit WEP, you can use 26 digit hexadecimals.</p> <p>Up to four WEP keys can be registered. Specify the number to be registered with "val".</p> <p>When a WEP is specified by key phrase, the WEP specified by key is overwritten.</p> <p>To use this function, set the same key number and WEP key for all ports that transmit data to each other.</p> <p>You can omit the numbers with "val". The key number is set to 1 when making these omissions.</p>
encval {1 2 3 4}	<p>You can specify which of the four WEP keys is used for packet encoding. "1" is set if a number is not specified.</p>
auth {open shared}	<p>You can set an authorization mode when using WEP. The specified value and authorized mode are as follows:</p> <p>open: open system authorized (default)</p> <p>shared: shared key authorized rate</p>

Parameter	Value configured
rate {au- to 11m 5.5m 2m 1m}	<p>You can set the IEEE 802.11b transmitting speed.</p> <p>The speed you specify here is the speed at which data is sent. You can receive data at any speed.</p> <p>auto: automatically set (default)</p> <p>11m: 11 Mbps fixed</p> <p>5.5m: 5.5 Mbps fixed</p> <p>2m: 2 Mbps fixed</p> <p>1m: 1 Mbps fixed</p>

wins

Use the "wins" command to configure WINS server settings.

❖ Viewing settings

```
msh> wins
```

- If the IP address obtained from DHCP differs from the WINS IP address, the DHCP address is the valid address.

❖ Configuration

```
msh> wins "interface_name"
{on | off}
```

- {on} means "active" and {off} means "inactive".
- Be sure to specify the interface.
- ip1394 can be specified only when the IEEE 1394 interface is installed.
- wlan can be specified only when the IEEE 802.11b interface is installed.

Interface name	Interface configured
ether	Ethernet interface
ip1394	IEEE 1394 interface
wlan	IEEE 802.11b interface

❖ Address configuration

Use the following command to configure a WINS server IP address:

```
msh> wins "interface_name"
{primary|secondary} "IP address"
```

- Use the "primary" command to configure a primary WINS server IP address.
- Use the "secondary" command to configure a secondary WINS server IP address.
- Do not use "255.255.255.255" as the IP address.

❖ NBT (NetBIOS over TCP/IP) Scope ID Selection

You can specify the NBT scope ID.

```
msh> wins
"interface_name" scope
"scope ID"
```

- The scope ID can be entered using up to 31 alphanumeric characters.
- Be sure to specify the interface.
- ip1394 can be specified only when the IEEE 1394 interface is installed.
- wlan can be specified only when the IEEE 802.11b interface is installed.

Interface name	Interface configured
ether	Ethernet interface
ip1394	IEEE 1394 interface
wlan	IEEE 802.11b interface

SNMP

The SNMP agent operating on UDP and IPX is incorporated into the built-in Ethernet board and optional IEEE 802.11b interface unit of this printer. Also, the SNMP agent operating on UDP is incorporated in the optional IEEE 1394 interface board.

Using the SNMP manager, you can get information about the printer.

Important

- ❑ If you changed the printer's community name, change the configuration of the connected computer accordingly, using SNMP Setup Tool. For details, see SNMP Setup Tool Help.

The default community names are **[public]** and **[admin]**. You can get MIB information using these community names.

❖ Start SNMP Setup Tool

- Windows 95/98/Me, Windows 2000, Windows NT 4.0:
Click the **[Start]** button.
Point to **[SmartDeviceMonitor for Admin]** on the **[Programs]** menu.
Click **[SNMP Setup Tool]**.
- Windows XP:
Click the **[Start]** button.
Point to **[SmartDeviceMonitor for Admin]** on the **[All Programs]** menu.
Click **[SNMP Setup Tool]**.

❖ Supported MIBs(SNMP v1/v2)

- MIB-II
- PrinterMIB
- HostResourceMIB
- RicohPrivateMIB

❖ Supported MIBs(SNMP v3)

- MIB-II
- PrinterMIB
- HostResourceMIB
- RicohPrivateMIB
- SNMP-FRAMEWORK-MIB
- SNMP-TARGET-MIB
- SNMP-NOTIFICATION-MIB
- SNMP-USER-BASED-SM-MIB
- SNMP-VIEW-BASED-ACM-MIB

Getting Printer Information over the Network

This section explains details of each item displayed in the printer status and information.

This manual covers all models, and therefore contains functions and settings that may not be available for your model.

Current Printer Status

The printer status can be checked using the following commands:

- UNIX: Use the "lpq" command and "rsh", "rcp", and "ftp" parameters.
- mshell: Use the "status" command.

Messages	Description
Access Restricted	The job was canceled because user have no authority.
Add staples (Booklet: Back)	The staple of booklet finisher (back) is exhausted.
Add staples (Booklet: Both)	The staple of booklet finisher is exhausted.
Add staples (Booklet: Front)	The staple of booklet finisher (front) is exhausted.
Adjusting...	The machine is initializing or calibrating.
Call Service Center	There is a malfunction in the machine.
Canceled	The job is reset.
Canceling Job...	The job is being reset.
Card/Counter not inserted	The machine is waiting for prepaid card or key.
Coin or amount not inserted	The machine is waiting for coin to be inserted.
Coin/Key Counter not inserted	The machine is waiting for coin or key counter.
Configuring...	Setting is being changed.
Cover Open: ADF	The document feeder is open.
Cover Open: Duplex Unit	The cover of the duplex unit is open.
Cover Open: Finisher	The cover of Finisher is open.
Cover Open: Finisher Cover	The cover of Finisher is open.
Cover Open: Finisher Front	The front cover of Finisher is open.
Cover Open: Finisher Upper	The upper cover of Finisher is open.
Cover Open: Finisher Upper-L	A upper left cover of Finisher is open.
Cover Open: Finisher Upper-R	A upper right cover of Finisher is open.
Cover Open: Front	The front cover is open.
Cover Open: Front Cover	The front cover is open.
Cover Open: Fusing Unit Cover	The cover of the fusing unit is open.

Messages	Description
Cover Open: Lower Right	The lower right cover is open.
Cover Open: Mailbox	The mailbox is open.
Cover Open: Right	The right cover is open.
Cover Open: Shift Tray Cover	The shift tray cover is open.
Cover Open: Upper Left	The upper left cover is open.
Cover Open: Upper Right	The upper right cover is open.
Cover Open: Z-folding Upper	The upper Z fold unit cover on is open.
Data Size Error	The data size error occurred.
Empty: Black Toner	The black toner cartridge is almost empty.
Empty: Cyan Toner	The cyan toner cartridge is almost empty.
Empty: Magenta Toner	The magenta toner cartridge is almost empty.
Empty: Toner	The toner cartridge is almost empty.
Empty: Yellow Toner	The yellow toner cartridge is almost empty.
Energy Saver Mode	The machine is in Energy Saver Mode.
Error	An error has occurred.
Error: Address Book	An error has occurred in the data of the address book.
Error: Command Transmission	An error has occurred in the machine.
Error: DIMM Value	A memory error occurred.
Error: Ethernet Board	An Ethernet board error has occurred.
Error: HDD Board	A hard disk drive board error has occurred.
Error: IEEE1394 Board	An IEEE 1394 interface board error has occurred.
Error: Media Link Board	An error has occurred on the media link board.
Error: Memory Switch	A memory switch error has occurred.
Error: Optional Font	An error has occurred in the font file of the machine.
Error: Optional RAM	An error has occurred in the optional memory unit.
Error: Parallel I/F Board	An error has occurred in the parallel interface.
Error: PDL	An error has occurred in the page description language.
Error: USB Interface	An error has occurred in the USB interface.
Error: Wireless Card	Wireless card is not inserted during start up, or the IEEE 802.11b interface unit or the wireless card is taken out after start up .
Error: Wireless Card or Board	An error has occurred in the IEEE 802.11b interface unit.
Exceed Booklet Stapling Limit	The printing has exceeded the stapling limit of the booklet finisher.
Full: Copy Tray	The output paper tray is full.
Full: Finisher	Finisher tray is full.

Messages	Description
Full: Finisher Booklet Tray	Booklet tray of Finisher is full .
Full: Finisher Shift Tray	Shift tray of Finisher is full.
Full: Finisher Shift Tray 1	Shift tray 1 of Finisher is full.
Full: Finisher Shift Tray 1, 2	The shift tray 1 and 2 of Finisher are full.
Full: Finisher Shift Tray 2	Shift tray 2 of Finisher is full.
Full: Finisher Upper Tray	The upper tray of Finisher is full.
Full: Hole Punch Receptacle	Punch Chip receptacle for hole punch is full.
Full: Internal Tray	The output paper tray is full.
Full: Mailbox Tray 1	Tray 1 of the mailbox is full.
Full: Mailbox Tray 2	Tray 2 of the mailbox is full.
Full: Mailbox Tray 3	Tray 3 of the mailbox is full.
Full: Mailbox Tray 4	Tray 4 of the mailbox is full.
Full: Mailbox Tray 5	Tray 5 of the mailbox is full.
Full: Mailbox Tray 6	Tray 6 of the mailbox is full.
Full: Mailbox Tray 7	Tray 7 of the mailbox is full.
Full: Mailbox Tray 8	Tray 8 of the mailbox is full.
Full: Mailbox Tray 9	Tray 9 of the mailbox is full.
Full: Waste Oil Bottle	The abolition oil bottle is full.
Full: Waste Toner	Waste toner is full.
Full: Waste Toner Bottle	Waste toner bottle is full.
Hex Dump Mode	It is a hex dump mode.
Immed. Trans. not connected	It did not connect directly with the other party of the transmission.
Immediate Transmission Failed	An error has occurred while transmitting directly.
In Use: Copier	The copier is being used.
In Use: Fax	The fax is being used.
In Use: Finisher	Other functions is using Finisher.
In Use: Input Tray	Other functions is using the input tray.
In Use: Staple Unit	Other functions is using the staple unit.
Independent-supplier Toner	Toner that is not recommended is set.
Key Card not inserted	The machine is waiting for key card to be inserted.
Key Card/Counter not inserted	The machine is waiting for key card or key counter to be inserted.
Key Counter not inserted	The machine is waiting for key counter to be left in it.
Loading Toner...	Toner is being supplied.

Messages	Description
Low: Black Toner	The black toner cartridge is not set correctly, or toner is almost running out.
Low: Cyan Toner	The cyan toner cartridge is not set correctly, or toner is almost running out.
Low: Magenta Toner	The magenta toner cartridge is not set correctly, or toner is almost running out.
Low: Toner	The toner cartridge is not set correctly, or toner is almost running out.
Low: Yellow Toner	The yellow toner cartridge is not set correctly, or toner is almost running out.
Malfunction: Booklet Processor	There is a problem with booklet finisher.
Malfunction: Ext. Charge Unit	There is a problem with external charge unit.
Malfunction: Finisher	There is a problem with Finisher.
Malfunction: Interposer	There is a problem with Interposer.
Malfunction: LargeCapacity Tray	There is a problem with LargeCapacity tray.
Malfunction: Output Tray	There is a problem with output tray.
Malfunction: Staple Unit	There is a problem with the staple unit.
Malfunction: Tray 1	There is a problem with tray 1.
Malfunction: Tray 2	There is a problem with tray 2.
Malfunction: Tray 3	There is a problem with tray 3.
Malfunction: Tray 3 (LCT)	There is a problem with tray 3 (LCT).
Malfunction: Tray 4	There is a problem with tray 4.
Malfunction: Z-folding unit	There is a problem with the Z fold unit.
Memory Low: Copy	Memory shortage has occurred while the copy was operating.
Memory Low: Data Storage	Memory shortage has occurred while the document was being accumulated.
Memory Low: Fax Scanning	Memory shortage has occurred while transmitting the fax.
Memory Low: Scanning	Memory shortage has occurred while the scanner was working.
Miscellaneous Error	Other error has occurred.
Mismatch: Paper Size	Indicated paper tray does not contain paper of selected size.
Mismatch: Paper Size and Type	Indicated paper tray does not contain paper of selected size and type.
Mismatch: Paper Type	Indicated paper tray does not contain paper of selected type.
Near Replacing: Black PCU	Prepare the new black photoconductor unit.
Near Replacing: Develop. Unit C	Prepare the new development unit (cyan).
Near Replacing: Develop. Unit K	Prepare the new development unit (black).
Near Replacing: Develop. Unit M	Prepare the new development unit (magenta).

Messages	Description
Near Replacing: Develop. Unit Y	Prepare the new development unit (yellow).
Near Replacing: Fusing Unit	Prepare the new fusing unit.
Near Replacing: Maintenance Kit	Prepare the new maintenance kit.
Nearly Full: Waste Toner	Waste toner bottle is nearly full.
Need more Booklet Staples	Stapler has almost run out of staples.
No Paper: Interposer Tray	There is no paper in interposer unit.
No Paper: LCT	There is no paper in Large Capacity tray.
No Paper: Selected Tray	There is no paper in specified tray.
No Paper: Tray 1	There is no paper in tray 1.
No Paper: Tray 2	There is no paper in tray 2.
No Paper: Tray 3	There is no paper in tray 3.
No Paper: Tray 3 (LCT)	There is no paper in tray 3 (Large Capacity tray).
No Paper: Tray 4	There is no paper in tray 4.
Not Detected: B2 Lever	B2 lever is not correctly set.
Not Detected: Black Toner	Black toner is not correctly set.
Not Detected: Cyan Toner	Cyan toner is not correctly set.
Not Detected: Develop. Unit (C)	The development unit (cyan) is not correctly set.
Not Detected: Develop. Unit (K)	The development unit (black) is not correctly set.
Not Detected: Develop. Unit (M)	The development unit (magenta) is not correctly set.
Not Detected: Develop. Unit (Y)	The development unit (yellow) is not correctly set.
Not Detected: Duplex Feed Unit	The duplex feed unit is not correctly set.
Not Detected: Finisher	Finisher is not correctly set.
Not Detected: Fusing Unit	The fusing unit is not correctly set.
Not Detected: Input Tray	The paper feed tray is not correctly set.
Not Detected: Interposer	Interposer unit is not correctly set.
Not Detected: LCT	A large amount of paper feed tray is not correctly set.
Not Detected: Magenta Toner	Magenta toner is not correctly set.
Not Detected: PCU (C)	The photoconductor unit (cyan) is not correctly set.
Not Detected: PCU (K)	The photoconductor unit (black) is not correctly set.
Not Detected: PCU (M)	The photoconductor unit (magenta) is not correctly set.
Not Detected: PCU (Y)	The photoconductor unit (yellow) is not correctly set.
Not Detected: Tray 1	Tray 1 is not correctly set.
Not Detected: Tray 2	Tray 2 is not correctly set.
Not Detected: Tray 3	Tray 3 is not correctly set.
Not Detected: Tray 3 (LCT)	Tray 3 (Large Capacity tray) is not correctly set.

Messages	Description
Not Detected: Tray 4	Tray 4 is not correctly set.
Not Detected: WasteToner Bottle	Waste toner bottle is not correctly set.
Not Detected: Yellow Toner	Yellow toner is not correctly set.
Not Detected: Z-fold'g Internal	The Z fold unit is not correctly set.
Not Reached, Data Deleted	Unreached job is deleted.
Not Reached, Data Stored	Unreached job is preserved.
Offline	Printer is offline.
Original on Exposure Glass	The original remains on the exposure glass.
Panel Off Mode	The machine is in Panel-Off mode.
Panel Off Mode>>Printing ava.	The machine is in Control Panel-Off mode.
Paper in Duplex Unit	The paper remains in the duplex unit.
Paper in Finisher	The paper remains in Finisher.
Paper Misfeed: ADF	The paper has jammed in Document Feeder.
Paper Misfeed: BookletProcessor	The paper has jammed in booklet finisher.
Paper Misfeed: Duplex Feed Unit	The paper has jammed in duplex feed unit.
Paper Misfeed: Duplex Unit	The paper has jammed in the duplex unit.
Paper Misfeed: Finisher	The paper has jammed in Finisher.
Paper Misfeed: Input Tray	The paper has jammed in the input tray.
Paper Misfeed: Internal Path	The paper has jammed inside the machine.
Paper Misfeed: Internal/Output	The paper has jammed inside the machine.
Paper Misfeed: Interposer	The paper has jammed in interposer unit.
Paper Misfeed: Mailbox	The paper has jammed in the mailbox.
Paper Misfeed: Output Tray	The paper has jammed in output tray.
Paper Misfeed: Z-folding unit	The paper has jammed in the Z fold unit.
Paper on Finisher Shift Tray 2	The paper remains in Finisher Shift Tray 2.
Paper on FinisherShiftTray1, 2	The paper remains in Finisher Shift Tray 1 and 2.
Paper on Paper Bypass	The paper remains in the bypass tray.
Prepaid Card not inserted	The machine is waiting for prepaid card to be inserted.
Print Complete	The print was completed.
Printing	Printing is in progress.
Processing	Data is being processed.
RC Gate Connection Error	Failed connection with RC Gate.
Ready	The machine is ready to print.
Replace Black PCU	It is time to replace the black photoconductor unit.
Replace Charger Kit	It is time to replace the charger kit.

Messages	Description
Replace Cleaning Web	It is time to replace the Cleaning Web.
Replace Color PCU	It is time to replace the photoconductor unit (color).
Replace Develop. Unit (Black)	It is time to replace the development unit (black).
Replace Develop. Unit (Color)	It is time to replace the development unit (color).
Replace Develop. Unit (Cyan)	It is time to replace the development unit (cyan).
Replace Develop. Unit (Magenta)	It is time to replace the development unit (magenta).
Replace Develop. Unit (Yellow)	It is exchange time of the development unit (yellow).
Replace Feed Roller	It is time to replace the transfer roller.
Replace Fuser Oil Unit	It is time to replace the fuser oil unit.
Replace Fusing Unit	It is time to replace the fusing unit.
Replace Maintenance Kit	It is time to replace the maintenance kit.
Replace PCU	It is time to replace the photoconductor unit.
Replace Toner Suction Motor	It is time to replace the toner Suction motor.
Replace Transfer Belt	It is time to replace the transfer belt.
Replace Transfer Cleaning Unit	It is time to replace the transfer cleaning unit.
SD Card Authentication failed	SD card authentication failed.
Setting Remotely	The RDS setting is being processed.
Skipped due to Error	Skipped the error.
Storage Complete	The storage is complete.
Storage Failed	The storage has failed.
Supplies Order Call failed	The supply order call has failed.
Suspend / Resume Key Error	Finisher stop button was pressed.
Transmission Aborted	The transmission was interrupted.
Transmission Complete	The transmission completion was completed.
Transmission Failed	The transmission has failed.
Tray Error: Chaptering	The paper feed tray specification error has occurred because chaptering as well as the normal paper use the same tray for printing.
Tray Error: Duplex Printing	Selected paper tray cannot be used for duplex printing.
Unit Left Open: ADF	Document feeder is opened.
Warming Up...	The machine is warming up.

Note

- For details about UNIX commands, see **UNIX Supplement**.
- Check the error contents that may be printed in the configuration page. For details about printing a configuration page, see Printer Reference.

Printer configuration

You can check the printer configuration using telnet.

This section explains the checking procedure for input/output tray and printer language.

- UNIX: Use the "info" command and "rsh", "rcp", and "ftp" parameters.
- mshell: Use the "info" command.

❖ Input Tray

Item	Description
No.	ID number of the paper tray
Name	Name of the paper tray
PaperSize	Size of paper loaded in the paper tray
status	Current status of the paper tray <ul style="list-style-type: none"> • Normal:Normal • NoInputTray: No tray • PaperEnd:No paper

❖ Output Tray

Item	Description
No.	ID number of the output tray
Name	Name of the output tray
status	Current status of the output tray <ul style="list-style-type: none"> • Normal:Normal • PaperExist:Paper exist • OverFlow:Paper is full • Error:Other errors

❖ Emulation

Item	Description
No.	ID number of the printer language used by the printer
Name	Name of the printer language used in the printer
Version	Version of the printer language

Note

- For details about UNIX commands and parameters, see **UNIX Supplement**.
- For details about mshell info commands, see p.96 "info".

Understanding the Displayed Information

This section explains how to read status information returned by the network interface board.

Print Job Information

Use the following command to display print job information:

- UNIX: Use the "info" command and "rsh", "rcp", and "ftp" parameters.
- mshell: Use the "info" command.

Item	Description
Rank	Print job status. <ul style="list-style-type: none">• Active Printing or preparing for printing.• Waiting Waiting to be transferred to the printer.
Owner	Print request user name.
Job	Print request number.
Files	The name of the document.
Total Size	The size of the data (spooled). The default is 0 bytes.

Note

- For details about UNIX commands and parameters, see **UNIX Supplement**.
- For details about mshell info commands, see p.96 "info".

Print Log Information

This is a record of the most recent 16 jobs printed.

Use the following command to display print log information:

- UNIX: Use the "prnlog" command and "rsh", "rcp", and "ftp" parameters.
- telnet : Use the "prnlog" command. See p.97 "prnlog".

Item	Description
ID	Print request ID.
User	Print request user name.
Page	Number of pages printed
Result	Print Request Result Communication Result <ul style="list-style-type: none"> • OK Print was completed normally. However, the print result may not be as required due to printer problems. • NG Printing was not completed normally. • Canceled An "rcp", "rsh", or "lpr" command print request was canceled, possibly due to the printing application. Not applicable to the "ftp" or "rprinter" command.
Time	Time the print requested was received. Time of print request reception
User ID	Printer driver-configured User ID. Appears when the print request ID is specified.
JobName	Name of the document for printing Appears when the print request ID is specified.

Note

- For details about UNIX commands and parameters, see **UNIX Supplement**.
- For details about mshell prnlog commands, see p.97 "prnlog".

Configuring the Network Interface Board

Use the following command to display network interface board settings:

- telnet : Use the “show” command. See p.101 “show”.

Item	Description
Common	
mode	
Protocol Up/Down	[up] means "active" and [down] means "inactive".
appletalk	
TCP/IP	
netware	
SMB	
IP over 1394	
SCSI print	
Ethernet interface	Internal version number
Syslog priority	
NVRAM version	Internal version number
Device name	Printer name
Comment	Comment
location	Location of the printer in the SNMP and Rendezvous information
Contact	Administrator information for the printer and contact information in the SNMP information
Soft switch	
appletalk	
mode	AppleTalk protocol in selection
Net	Network number
Object	Macintosh printer name
Type	Type of printer
Zone	Name of the zone that the printer belongs to

Item	Description
TCP/IP mode ftp lpr rsh telnet diprint web http ftpc snmp ipp autonet rendezvous ssl rfu nbt	<p>[up] means "active" and [down] means "inactive".</p>
EncapType	Frame type
dhcp	Dynamic Host Configuration Protocol (on/off)
Host name	
Address	IP address
netmask	Subnet mask
broadcast	Broadcast address
DNS Domain	DNS domain type
gateway	Default gateway address
Access Range[☆]	Access control range
Time server	NTP server address
Time Zone	NTP server time difference
Time server polling time	NTP server interval
SYSLOG server	
Home page URL	URL of homepage.
Home page link name	URL of home page

Item	Description
netware EncapType RPRINTER number Print server name File server name Context name Switch mode NDS/Bindery Packet negotiation Login Mode Print job timeout protocol SAP interval time NDS Tree Name	Frame type Remote printer number Print server name Name of the connect file server Context of print server Active mode (this value is fixed) Login mode Packet timeout Protocol used NDS tree name
SMB Switch mode Direct print Notification Workgroup name Computer name Comment Share name[1] protocol	(this value is fixed) (this value is fixed) Notification of print job completion Name of the workgroup Name of the computer Comment Share name (model of the printer)

Item	Description
IEEE 802.11b Device Name dhcp Address netmask broadcast DNS Domain ssid Channel range Channel Communication mode Authentication TX Rate WEP encryption Encryption key	Printer name DHCP (on/off) IP address Subnet mask Broadcast address DNS domain type SSID used Channels available for use Channel used IEEE 802.11b interface transmitting mode IEEE 802.11b interface speed WEP enabled or disabled WEP key
IP over 1394 Host name DHCP Address netmask broadcast DNS Domain	 IP address Subnet mask Broadcast address
SCSI print Bidi.	Bidirectional setting (on/off)
Bluetooth Bluetooth mode	Bluetooth connection mode
UPnP URL	
dns Server[X]: Selected DNS Server	IP address of the DNS server Selected DNS server
Domain Name ether wlan ip1394	Domain name on an Ethernet connection Domain name on a wireless LAN connection

Item	Description
rendezvous	
Computer Name	Computer name
Rendezvous Name (ether)	Rendezvous name on an Ethernet connection
Rendezvous Name (wlan)	Rendezvous name on a wireless LAN connection
Rendezvous Name (ip1394)	Rendezvous name on an IP over 1394 connection
location	Location of the printer
Priority (diprint)	diprint priority number
Priority (lpr)	lpr priority number
Priority (ipp)	ipp priority number
IP TTL	IP TTL value
LinkLocal Route for Multi I/F: Ethernet (ether)	[IEEE 802.11b (wlan)] appears when IEEE 802.11b is selected. [IP over 1394 (ip1394)] appears when IEEE1394 is selected.
DDNS	
ether	Dynamic DNS function on an Ethernet connection (on/off)
wlan	Dynamic DNS function on a wireless LAN connection (on/off)
ip1394	Dynamic DNS function on an IP over 1394 connection (on/off)
wins	
ether	
Primary WINS	IP address of the primary WINS server on an Ethernet connection
Secondary WINS	IP address of the secondary WINS server on an Ethernet connection
ip1394	
Primary WINS	IP address of the primary WINS server on an IP over 1394 connection
Secondary WINS	IP address of the secondary WINS server on an IP over 1394 connection
SNMP	
SNMPv1v2	
SNMPv3	
protocol	
v1Trap	
v2Trap	
v3Trap	
SNMPv1v2 Remote Setting	
SNMPv3 Privacy	
Shell mode	Remote maintenance tool mode

Message List

This is a list of messages that appear in the printer's system log. The system log can be viewed using the "syslog" command.

System Log Information

Use the following command to display the system log information:

- UNIX: Use the "syslog" command and "rsh", "rcp", and "ftp" parameters.
- telnet : Use the "syslog" command.

Message	Problem and solutions
Access to NetWare server <file server name> denied. Either there is no account for this print server on the NetWare server or the password was incorrect.	(In the print server mode) Login to the file server failed. Make sure that the print server is registered on the file server. If a password is specified for the print server, delete it.
add_sess: bad trap addr:<IpAddress>, community:<community name>	The IP address (0.0.0.0) is unavailable when the community access type is TRAP. Specify the host IP address for the TRAP destination.
add_sess: community<community name> already defined.	The same community name already exists. Use another community name.
add_sess_ipx: bad trap addr: <IPXaddress>, community:<community name>	The IPX address (00:00:00:00:00:00) is unavailable when the community access type is TRAP. Specify the host IPX address for the TRAP destination.
add_sess_ipx: community <community name> already defined.	The same community name already exists. Use another community name.
ANONYMOUS FTP LOGIN FROM <IP address>, <password>	An anonymous login has been made with a password <password> from the host <IP address>.
anpd start. (AppleTalk)	The ANPD (AppleTalk Network Package Daemon) service has started.
Attach FileServer= <file server name>	Connection to the file server as the nearest server has been established.
Attach to print queue <print queue name>	(In the print server mode) Attached to the print queue.
Cannot create service connection	(In the remote printer mode) Connection to the file server has not been established. The number of file server users may have exceeded the maximum capacity of the file server.
Cannot find rprinter (<print server name>/<printer number>)	The printer with the number displayed on the print server does not exist. Make sure that the printer number is registered on the print server.
Change IP address from DHCP Server.	The IP address changes when DHCP lease is renewed. To always assign the same IP address, set a static IP address to the DHCP server.

Message	Problem and solutions
child process exec error! (process name)	The network service failed to start. Turn the printer off and then on. If this does not work, contact your service or sales representative.
Connected DHCP Server(<DHCP server address>).	The IP address was successfully received from the DHCP server.
connection from <IP address>	Login was from the host IP address.
Could not attach to FileServer<error number>	(In the remote printer mode) Connection to the file server has not been established. The file server has refused the connection. Check the file server configuration.
Could not attach to PServer<print server>	(In the remote printer mode) Connection to the print server has not been established. The print server has refused the connection. Check the print server configuration.
Current Interface Speed:xxxMbps	Speed of the network (10 Mbps or 100 Mbps)
Current IP address <current IP address>	The IP address <current IP address> was received from the dhcp server.
Current IPX address<IPX address>	Current ipx address
DHCP lease time expired.	DHCP lease time has expired. The printer tries to discover the DHCP server again. The IP address until now becomes invalid.
DHCP server not found.	The DHCP server was not found. Make sure that the DHCP is on the network.
dhcpcd start.	The DHCPCD service (dhcp client service) has started.
Duplicate IP=<IP address>(from <MAC address>).	The same IP address is used. Each IP address must be unique. Check the address of the device indicated in [MAC address].
Established SPX Connection with PServer,(RPSocket=<socket number>, connID=<connection ID>)	(In the remote printer mode) Connection to the print server has been established.
exiting	The lpd service has ended and the system is exiting the process.
Exit pserver	(In the print server mode) The print server function is disabled because the necessary print server settings have not been made.
Frametype =<frame type name>	The frame type name is configured to be used on NetWare.
httpd start.	The httpd service has started.
inetd start.	The inetd service has started.
IPP cancel-job: permission denied.	The printer could not authenticate the name of the user attempting to cancel a job.
ipp disable.	Printing with ipp is disabled.

Message	Problem and solutions
ipp enable.	Printing with ipp is enabled.
IPP job canceled. jobid=%d.	The spooled job was canceled due to error or user request.
LeaseTime=<lease time>(sec), Renew-Time=<renew time>(sec).	The resource lease time received from the DHCP server is displayed in [lease time] in seconds. The renewal time is displayed in [renew time] in seconds.
Login to fileserver <file server name> (<IPX IP>,<NDS BINDERY NDS BINDERY>)	(In the print server mode) Login to the file server is in the NDS or BINDERY mode.
multid start.	Data transmission service for multiprotocols has started.
nbstart start. (NetBEUI)	The service for NetBEUI protocol stack setting has started.
NBT Registration Broadcast(<NetBIOS name>)	Use a local broadcast to map the NetBIOS name with the IP address.
nbttd start.	The nbttd service has started (available only in the DHCP mode).
NetBEUI Computer Name =<computer name>	The NetBEUI computer name is specified.
nmsd start. (NetBEUI)	The nmsd (Name Server Daemon) service has started.
npriter start. (NetWare)	(In the remote printer mode) The NetWare service has started.
nwstart start. (NetWare)	The service for NetWare protocol stack setting has started.
Open log file <file name>	(In the print server mode) The specified log file has been opened.
papd start. (AppleTalk)	The AppleTalk print service has started.
phy release file open failed.	Replacing the network interface board is required. Contact your sales or service representative.
Print queue <print queue name> cannot be serviced by printer 0, <print server name>	(In the print server mode) The print queue cannot be established. Make sure that print queue exists on the specified file server.
Print server <print server name>has no printer.	(In the print server mode) The printer is not assigned to the print server. Using NWadmin, assign the printer, and then restart it.
print session full	No more print jobs can be accepted.
Printer <printer name> has no queue	(In the print server mode) The print queue is not assigned to the printer. Using NWadmin, assign the print queue to the printer, and then restart it.

Message	Problem and solutions
pserver start. (NetWare)	(In the print server mode) The NetWare service has started.
Required computer name (<Computer name>) is duplicated name	The start job found the computer name by adding the computer name to the suffix (0,1...). Set a new computer name that is unique.
Required file server (<file server name>) not found	The required file server is not found.
restarted.	The lpd service has started.
sap enable, saptype=<SAP type>, sapname=<SAP name>	The SAP function has started. The SAP packet is issued to advertise the service on the SAP table on the NetWare server.
session <community name> already defined.	The requested community name is not defined.
session_ipx <community name> not defined.	The requested community name is not defined.
Set context to <NDS context name>	An NDS context name has been set.
shutdown signal received. network service rebooting...	The network service is rebooting.
smbd start. (NetBEUI)	The smbd service has started.
SMTPC: failed to get smtp server ip-address.	The SMTP server IP address could not be obtained. This could be because: <ul style="list-style-type: none"> • The specified DNS server could not be found. • No connection to the network has been established. • The specified DNS server could not be found. • An incorrect DNS server is specified. • The specified SMTP server IP address could not be found in the DNS server.
SMTPC: failed to connect smtp server. timeout.	Connection to the SMTP server failed due to timeout. This could be because: <ul style="list-style-type: none"> • The specified SMTP server name is incorrect. • No connection to the network has been established. • The network configuration is incorrect, so there is no response from the SMTP server.
SMTPC: refused connect by smtp server.	Connection to the SMTP server is denied. This could be because: <ul style="list-style-type: none"> • A server other than the SMTP server has been specified. • The specified SMTP server port number is incorrect.

Message	Problem and solutions
SMTPC: no smtp server. connection close.	Connection to the SMTP server failed due to no response from SMTP. This could be because: <ul style="list-style-type: none"> • A server other than the SMTP server has been specified. • The specified SMTP server port number is incorrect.
SMTPC: failed to connect smtp server.	Connection to the SMTP server failed. This could be because: <ul style="list-style-type: none"> • No connection to the network has been established. • The network configuration is incorrect, so there is no response from the SMTP server. • The specified SMTP server name is incorrect. • An incorrect SMTP server is specified. • The specified SMTP server IP address could not be found in the DNS server. • A server other than the SMTP server has been specified. • The specified SMTP server port number is incorrect.
SMTPC: username or password wasn't correct. [response code] (information)	Connection to the SMTP server failed. This could be because: <ul style="list-style-type: none"> • The specified SMTP user name is incorrect. • The specified SMTP password is incorrect. Check the SMTP user name and password.
Snmp over ip is ready.	Communication over TCP/IP with snmp is available.
Snmp over IP over 1394 is ready.	Communication over IP over 1394 with snmp is available.
Snmp over ipx is ready.	Communication over IPX with snmp is available.
SNMPD: account is unavailable: Same account name be used.	User account is disabled. This could be because it use the same account name as the administrator account.
SNMPD: account is unavailable: The authentication password is not set up.	User account is disabled. This could be because the authentication password is not set, and only the encryption account is set.
SNMPD: account is unavailable: encryption is impossible.	Encryption is not possible and account is disabled. This could be because: <ul style="list-style-type: none"> • Security option is not installed. • Encryption password has not been specified.
SNMPD: trap account is unavailable.	v3Trap cannot be sent. This could be because the Trap destination account is different from the account specified by the printer.

Message	Problem and solutions
snmpd start.	The snmpd service has started.
started.	The direct print service has started.
Started.	The rendezvous function is enabled.
Terminated.	The rendezvous function is disabled.
Terminated. (PS not found)	The rendezvous function is disabled because PS is not found.
The print server received error <error number> during attempt to log in to the network. Access to the network was denied. Verify that the print server name and password are correct.	Login to the file server failed. The print server is not registered or a password is specified. Register the print server without specifying a password.
WINS name refresh :Server No Response	There was no response to the update request from the print server. Check that the WINS server address is correct and the WINS server is working properly.
WINS name registration/refresh error code(errornumber)	Set unique NetBIOS names. Check that the WINS server address is correct and the WINS server is working properly.
WINS name registration:Server No Response	There was no response to the registration request from the server. Check that the WINS server address is correct and the WINS server is working properly.
WINS server address0.0.0.0	The WINS server was not specified. Specify the WINS server address to match the printer name with WINS.
WINS Server=<WINS server address> NetBIOS Name=<NetBIOS name>	The printer name was successfully registered.
WINS wrong scopeID	The scope ID is incorrect. Specify the correct scope ID.

Note

- For details about UNIX commands and parameters, see **UNIX Supplement**.
- For details about “syslog” command, see p.106 “syslog”.

5. Special Operations under Windows

Printing Files Directly from Windows

You can print files directly using Windows commands. For example, you can print PostScript files for PostScript 3.

❖ Windows 95/98/Me

You can print files directly using ftp command.

❖ Windows 2000/XP, Windows Server 2003, Windows NT 4.0

You can print files directly using lpr, rcp or ftp command.

Setup

Follow the procedure below to make network environment settings.

1 Enable TCP/IP with the control panel, and then set up the printer's network environment about TCP/IP including IP addresses.

TCP/IP of the printer is set as default.

2 Install a TCP/IP in Windows to set up the network environment.

Consult the network administrator for the local setting information.

3 To print under Windows 2000/XP, Windows Server 2003, or Windows NT 4.0, install "Printing service for UNIX" as the network application. To print under Windows NT 4.0, install "Microsoft TCP/IP printing" as the network application.

Reference

For details about setting the IP address of the printer using DHCP, see p.139 "Using DHCP".

This completes the setup for specifying a printer using an IP address when printing. When using a host name to specify a printer, proceed to p.133 "Using a Host Name Instead of an IP Address" and continue the setup.

Using a Host Name Instead of an IP Address

When a host name is defined, you can specify a printer by host name instead of IP address. The host names vary depending on the network environment.

When using DNS

Use the host name set to the data file on the DNS server.

When setting the IP address of a printer using DHCP

Use the printer name on the configuration page as the host name.

Reference

For details about printing a configuration page, see Printer Reference.

In other cases

Add the IP address and host name of the network printer to the hosts file on the computer used for printing. Methods of addition vary depending on operating systems.

Windows 95/98/Me

1 Copy `\WINDOWS\HOSTS.SAM` to the same directory and name it "HOSTS" with no extension.

2 Open the "`\WINDOWS\HOSTS`" file created using memo pad files, for instance.

3 Add an IP address and host name to the hosts file using the following format:

```
192.168.15.16 host # NP
```

"192.168.15.16" is the IP address, "host" is the printer's host name, and "#NP" is replaced by comments. Insert a space or tab between "192.168.15.16" and "host", between "host" and "#NP" respectively, using one line for this format.

4 Save the file.

Windows 2000/XP, Windows Server 2003, Windows NT 4.0

1 Open the hosts file using memo pad files, for instance.

The hosts file is in the following folder:

```
\WINNT\SYSTEM32\DRIVERS\ETC\HOSTS
```

"\WINNT" is the directory of the installation destination for Windows 2000/XP, Windows Server 2003, and Windows NT 4.0.

2 Add an IP address and host name to the hosts file using the following format:

```
192.168.15.16 host # NP
```

"192.168.15.16" is the IP address, "host" is the printer's host name, and "#NP" is replaced by comments. Insert a space or tab between "192.168.15.16" and "host", between "host" and "#NP" respectively, using one line for this format.

3 Save the file.

Printing Commands

The following explains printing operations using the "lpr", "rcp", and "ftp" commands.

Enter commands using the command prompt window. The location of the command prompts varies depending on operating systems:

- Windows 95/98
[Start] - [Programs] - [MS-DOS Prompt]
- Windows Me
[Start] - [Programs] - [Accessories] - [MS-DOS Prompt]
- Windows 2000
[Start] - [Programs] - [Accessories] - [Command Prompt]
- Windows XP, Windows Server 2003
[Start] - [All Programs] - [Accessories] - [Command Prompt]
- Windows NT 4.0
[Start] - [Programs] - [Command Prompt]

 **Note**

- Match the data format of the file to be printed with the emulation mode of the printer.

- ❑ If the message "print requests full" appears, no print jobs can be accepted. Try again when sessions end. For each command, the amount of possible sessions is indicated as follows:
 - lpr: 5(When the spool printing function is available: 10)
 - rcp, rsh: 5
 - ftp: 3
- ❑ Enter the file name in a format including the path from the directory executing commands.

Reference

The "option" specified in a command is an intrinsic printer option and its syntax is similar to printing from UNIX. For details, see **UNIX Supplement**.

lpr

❖ When specifying a printer by IP address

```
c:> lpr -Sprinter's IP address [-Poption] [-ol] \pass name\file name
```

❖ When using a host name instead of an IP address

```
c:> lpr -Sprinter's host name [-Poption] [-ol] \pass name\file name
```

When printing a binary file, add the "-ol" option (lowercase O, and lowercase L).

When using a printer with the host name "host" to print a PostScript file named "file 1" located in the "C:\PRINT" directory, the command line is as follows:

```
c:> lpr -Shost -Pfiletype=RPS -ol C:\PRINT\file1
```

rcp

First, register the printer's host name in the hosts file.

```
c:> rcp [-b] \pass name\file name [pass name\file name...] printer's host name:[option]
```

Note

- ❑ In file names, "*" and "?" can be used as wild cards.
- ❑ When printing a binary file, add the "-b" option.

When using a printer with the host name "host" to print a PostScript file named "file 1" or "file 2" located in the "C:\PRINT" directory, the command line is as follows:

```
c:> rcp -b C:\PRINT\file1 C:\PRINT\file2 host:file-type=RPS
```

Reference

For details about registering the printer's host name in the hosts file, see p.133 "Using a Host Name Instead of an IP Address".

ftp

Use the "put" or "mput" command according to the number of files to be printed.

❖ When one file is printed

```
ftp> put \pass name\file name [option]
```

❖ When multiple files are printed

```
ftp> mput \pass name\file name [\pass name\file name...] [option]
```

Follow the procedure below to print using the "ftp" command.

- 1** Formulate the printer's IP address or the host name of the hosts file printer as an argument and use the "ftp" command.

```
% ftp printer's IP address
```

- 2** Enter the user name and password, and then press the [# Enter] key.

To use the default account, enter "admin" as user name, and leave the password blank.

User:

Password:

When user authentication is set, enter a login user name and password.

- 3** When printing a binary file, set the file mode to binary.

```
ftp> bin
```

When printing a binary file in ASCII mode, print may not come out correctly.

- 4** Specify files to be printed.

The following shows the examples of printing a PostScript file named "file 1" in the "C:\PRINT" directory and printing file 1 and file 2.

```
ftp> put C:\PRINT\file1
filetype=RPS
ftp> mput C:\PRINT\file1
C:\PRINT\file2
```

- 5** Quit ftp.

```
ftp> bye
```

 **Note**

- "=" , " , " _ " , and " ; " cannot be used for filenames. File names will be read as option strings.
- For "mput" command, option can not be defined.
- For "mput" command, "*" and "?" can be used as wild cards in file names.

- When printing a binary file in ASCII mode, print may not come out correctly.

When Using Windows Terminal Service/MetaFrame

The following explains how to use Windows Terminal Service and Maintenance.

Operating Environment

The following operating systems and MetaFrame versions are supported.

- ❖ **Windows NT Server 4.0 Terminal Server Edition**
 - MetaFrame 1.8 SP3/FR1 SP3/SP4
 - MetaFrame XP 1.0 SP1/SP2/FR1
- ❖ **Windows 2000 Server/Advanced Server**
 - MetaFrame 1.8 SP3/FR1 SP3/SP4
 - MetaFrame XP 1.0 SP1/SP2/FR1/FR2

Supported Printer Drivers

- ❖ **When Windows Terminal Service is operating**
 - PCL drivers
 - PostScript 3

 **Note**

- The RPCS printer driver is not supported.
- Some RPCS printer driver functions do not work if Windows Terminal Service is installed.

Limitations

The following limitations apply to the Windows Terminal Service environment.

These limitations are built in Windows Terminal Service or MetaFrame.

- ❖ **Windows Terminal Service**

In the Windows Terminal Service environment, some of the printer driver's functions is unavailable. In an environment where Windows Terminal Service is installed, some of the printer driver's functions is unavailable, even if any function of Windows Terminal Service is not used. When you install SmartDeviceMonitor for Client in an environment where the Terminal Service is running on a Windows NT Server 4.0 Terminal Server Edition or the Windows 2000 Server family computer, be sure to install it using the install mode. The following are the two methods of installation using the install mode:

- ① Use **[Add/Remove Programs]** in **[Control Panel]** to install SmartDeviceMonitor for Client.
- ② Enter the following command in the MS-DOS command prompt:

To quit the install mode, enter the following command in the MS-DOS command prompt.

❖ MetaFrame's [Auto-creating client printers]

Using [Auto-creating client printers] can select a logical printer created by copying the client's local printer data to the MetaFrame server. We strongly recommend testing this function in your network environment before using it for your work.

- The settings for optional equipment will not be stored in the server after the equipment is disconnected. The settings for optional equipment will be restored to its defaults each time the client computer logs on to the server.
- When printing a large number of bitmap images or using the server in a WAN environment over dial-up lines such as ISDN, printing may not be possible or errors may occur, depending on data transfer rates.
- When using MetaFrame XP 1.0 or higher versions, we recommend making settings in [Client Printer bandwidth] under [Citrix Management Console] according to the environment.

- If a print error occurs on the server and the print job or a printer created in [Auto-creating client printers] cannot be deleted, we recommend the following:

- MetaFrame 1.8 SP3, MetaFrame XP 1.0 SP1/FR1
Make settings in [Delete unfinished print jobs] in the registry. For details, see the Readme file provided with MetaFrame.
- MetaFrame XP 1.0 FR2
Make settings in [Delete pending print jobs at logout] under [Printer Properties Management] of Citrix Management Console.

❖ MetaFrame's [Printer driver replication]

Using [Printer driver replication] can distribute printer drivers across all servers in a server farm. We strongly recommend testing this function in your network environment before using it for your work.

- If the printer drivers are not properly copied, install them directly onto each server.

Using DHCP

You can use the printer in a DHCP environment. You can also register the printer NetBIOS name on a WINS server when it is running.

If you connect an Ethernet interface and IEEE 1394 (IP over 1394) interface simultaneously, pay attention to the following:

❖ When a static IP address is set for both interfaces

- **IP Address:** If interface IP addresses overlap, the Ethernet interface is selected.
- **Subnet Mask:** If interface subnet masks overlap, the Ethernet interface is selected.
- **Gateway Address:** The selected value is applied.

Note

- Make the gateway address setting inside the subnet set in the interface.
- If a value is beyond the range of the subnet selected by the interface, the machine operates using "0.0.0.0".

❖ When obtaining addresses from the DHCP server

- **IP Address, Subnet Mask:** you can configure addresses assigned by a DHCP server.

Note

- If IP addresses overlap or the same subnet IP addresses are selected, the effective value is assigned only to the prioritized interface.
- Ethernet has default interface priority.
- **AutoNet:** A temporary IP address starting with 169.254 and not used on the network, is assigned to the prioritized interface.

Note

- Default interface priority is IEEE 1394 (IP over 1394).
- **Gateway Address, DNS Server Address, and Domain Name:** You can configure the addresses assigned by DHCP to the prioritized interface.
If the gateway address is beyond the range of the subnet selected for the interface, the machine operates using "0.0.0.0".

Note

- Ethernet has default interface priority.

❖ When there are static IP addresses and addresses assigned by DHCP

- IP Address and subnet mask: if a static IP address is the same as an address assigned by DHCP, or the static subnet mask address and the subnet mask address assigned by DHCP overlap, the machine uses the static IP address interface.

Note

- ❑ The interface with the DHCP setting is set by default.
 - Gateway Address: operates using the address entered manually.

Note

- ❑ If a static address is not selected, or is set to 0.0.0.0, the interface using the address assigned by DHCP is used.

Note

- ❑ Printers that register the printer NetBIOS name on a WINS server must be configured for the WINS server. See p.110 “wins”.
- ❑ Supported DHCP servers are Microsoft DHCP Server included with Windows 2000 Server, Windows Server 2003, and Windows NT 4.0, and the DHCP server included with NetWare and UNIX.
- ❑ If you do not use the WINS server, reserve the printer's IP address in the DHCP server so the same IP address is assigned every time.
- ❑ To use the WINS server, change the WINS server setting to “active” using the control panel.
- ❑ Using the WINS server, you can configure the host name via the remote network printer port.

- ❑ DHCP relay-agent is not supported. If you use DHCP relay-agent on a network via ISDN, it will result in increased line charges. This is because your computer connects to the ISDN line whenever a packet is transferred from the printer.
- ❑ If there is more than one DHCP server, use the same setting for all servers. The machine operates using data from the DHCP server that responds first.

Using AutoNet

If the printer IP address is not automatically assigned by the DHCP server, a temporary IP address starting with 169.254 and not used on the network can be automatically selected by the printer.

Note

- ❑ The IP address assigned by the DHCP server is given priority over that selected by AutoNet.
- ❑ You can confirm the current IP address on the configuration page. For more information about the configuration page, see *Printer Reference*.
- ❑ When AutoNet is running, the NetBIOS name is not registered on the WINS server.
- ❑ The machine cannot communicate with devices that do not have the AutoNet function. However, this machine can communicate with Macintosh computers running Mac OS X 10.2.3. or higher.

Precautions

Please pay attention to the following when using the network interface board. When configuration is necessary, follow the appropriate procedures below.

Connecting a Dial-Up Router to a Network

When using NetWare (file server)

If the NetWare file server and printer are on opposite sides of a router, packets are sent back and forth continuously, possibly incurring communications charges. Because packet transmission is a feature of NetWare, you need to change the configuration of the router. If the network you are using does not allow you to configure the router, configure the machine instead.

❖ Configuring the router

Filter packets so they do not pass over the dial-up router.

Note

- The MAC address of the filtering printer is printed on the printer configuration page. For more information about printing a configuration page, see *Printer Reference*.
- For more information about configuring the printer if the router cannot be configured, see the following instructions.

Configuring the printer with NetWare

- 1** Following the setup method described earlier in this manual, configure the file server.
- 2** Set the frame type for NetWare environment.

Reference

For more information about selecting a frame type, see p.14 "Setting Up the Machine on a Network".

Configuring the printer without NetWare

- 1** When not printing, the network interface board sends packets over the network. Set NetWare to "inactive".

Reference

For more information about selecting a protocol, see p.14 "Setting Up the Machine on a Network".

When Using Network Utility

If the machine is connected to a network, observe the following points when setting up the machine or changing settings:

For more details, see the operating instructions and Help for the ScanRouter delivery software and DeskTopBinder Lite/Professional.

❖ When a dial-up router is connected in a network environment

The settings for the delivery server to be connected must be made appropriately for the machine with the ScanRouter delivery software, Auto Document Link, or DeskTopBinder Lite/Professional. In addition, set up connected devices using the I/O settings of ScanRouter V2 Administration Utility. If the network environment changes, make the necessary changes for the delivery server using the machine, the administration utility of client computers, Auto Document Link, and DeskTopBinder Lite/Professional. Also, set the correct information for the connected devices using the I/O settings of ScanRouter V2 Administration Utility.

Important

- If the machine is set up to connect to the delivery server via a dial-up router, the router will dial and go online whenever a connection to the delivery server is made. Telephone charges may be incurred.

❖ When connected to a computer that uses dial-up access

- Do not install the ScanRouter delivery software on a computer which uses dial-up access.
- When using the ScanRouter delivery software, DeskTopBinder Lite/Professional, Auto Document Link, or a TWAIN driver on a computer with dial-up access, a dial-up connection may be performed when connecting to the delivery server and other equipment, depending on the setup. If the computer is set up to connect to the Internet automatically, the confirmation dialog box will not appear, and telephone charges may be incurred without your being aware of it. To prevent unnecessary connections, the computer should be set up so the confirmation dialog box always appears before establishing a connection. Do not make unnecessary connections when using the above listed software.

NetWare Printing

Form feed

You should not configure form feed on NetWare. Form feed is controlled by the printer driver on Windows. If NetWare form feed is configured, the printer might not work properly. If you want to change form feed settings, always configure them using Windows.

- Under Windows 95/98/Me, clear the **[Form feed]** check box on the **[Printer Settings]** tab in the printer properties dialog box.
- Under Windows 2000/XP and Windows Server 2003, clear the **[Form feed]** check box on the **[NetWare Settings]** tab in the printer properties dialog box.
- Under Windows NT 4.0, clear the **[Form feed]** check box on the **[NetWare Settings]** tab in the printer properties dialog box.

Banner page

You should not configure a banner page on NetWare. If you want to change the banner page setting, always configure it using Windows.

- Under Windows 95/98/Me, clear the **[Enable banner]** check box on the **[Printer Settings]** tab in the printer properties dialog box.
- Under Windows 2000/XP and Windows Server 2003, clear the **[Enable banner]** check box on the **[NetWare Settings]** tab in the printer properties dialog box.
- Under Windows NT 4.0, clear the **[Enable banner]** check box on the **[NetWare Settings]** tab in the printer properties dialog box.

Printing after resetting the machine

After resetting the remote printer, the connection from the print server will be cut off for about 30-40 seconds before re-connecting. Depending on the NetWare specification, print jobs may be accepted, but they will not be printed during this interval.

When using the machine as a remote printer, wait about two minutes after resetting before attempting to print.

When the optional IEEE 802.11b interface unit is installed

When using the wireless LAN interface on the network, note the following:

❖ When moving the machine

Detach the antennas when relocating the machine locally.

After moving the machine, reattach the antennas, ensuring that:

- The antennas are positioned clear of obstacles.
- There is 40 to 60 mm between the antennas, so that they do not touch.
- The exposure glass cover and the Auto Document Feeder (ADF) do not knock the antennas.

❖ If the network area provides poor radio environment

Where radio wave conditions are bad, the network may not function due to interrupted or failed connections. When checking the wireless LAN signal and the access point, follow the procedure below to improve the situation:

- Position the access point nearer to the machine.
- Clear the space between access point and machine of obstructions.
- Move radio wave generating appliances, such as microwaves, away from the machine and access point.

Reference

For information about how to check radio wave status, see p.13 “Checking the machine's radio wave status”.

For more information about access point radio wave conditions, refer to the access point manual.

Information about Installed Applications

Samba(Ver 2.2.2-1.1)

Copyright © Andrew Tridgell 1994-1998

This program is free software; you can redistribute it and/or modify it under the terms of the GNU General Public License as published by the Free Software Foundation; either version 2 of the License, or (at your option) any later version. This program is distributed in the hope that it will be useful, but WITHOUT ANY WARRANTY; without even the implied warranty of MERCHANTABILITY or FITNESS FOR A PARTICULAR PURPOSE. See the GNU General Public License for more details. You should have received a copy of the GNU General Public License along with this program; if not, write to the Free Software Foundation, Inc., 675 Mass Ave, Cambridge, MA 02139, USA.

RSA® BSAFE™



- This product includes RSA® BSAFE™ cryptographic or security protocol software from RSA Security Inc.
- RSA is a registered trademark and BSAFE is a registered trademark of RSA Security Inc. in the United States and/or other countries.
- RSA Security Inc. All rights reserved.

Specifications

Interface	100BASE-TX, 10BASE-T, IEEE 1394 (IP over 1394) *1, IEEE 802.11b
Frame type	EthernetII, IEEE 802.2, IEEE 802.3, SNAP
Protocol	<ul style="list-style-type: none"> • Printer (LAN-Fax) <ul style="list-style-type: none"> TCP/IP LPR RSH RCP DIPRINT FTP IPP *2 *3 SMB *2 *5 IPX/SPX (NetWare) AppleTalk *4 NetBEUI • Internet Fax <ul style="list-style-type: none"> TCP/IP SMTP POP IMAP • Network Scanner <ul style="list-style-type: none"> TCP/IP RSH FTP SMTP POP SMB *6 • Document Server <ul style="list-style-type: none"> TCP/IP FTP HTTP • Management Function <ul style="list-style-type: none"> TCP/IP RSH RCP FTP SNMP HTTP TELNET (mshell) NBT DHCP DNS LDAP
SNMP v1/v2	MIB-II, PrinterMIB, HostResourceMIB, RicohPrivateMIB
SNMP v3	MIB-II, PrinterMIB, HostResourceMIB, RicohPrivateMIB, SNMP-FRAMEWORK-MIB, SNMP-TARGET-MIB, SNMP-NOTIFICATION-MIB, SNMP-USER-BASED-SM-MIB, SNMP-VIEW-BASED-ACM-MIB

-
- *1 The optional IEEE 1394 interface board supports only TCP/IP.
 - *2 Use the SmartDeviceMonitor for Client port.
 - *3 To use IPP under Windows XP, Windows Server 2003, use the Standard IPP port. Note, in SmartDeviceMonitor for Client however, this port does not support digest access authentication.
 - *4 This can be used when the PostScript 3 module is installed.
 - *5 Under Windows, this function can be used with TCP/IP and NetBEUI.
 - *6 SMB using NetBEUI is unavailable.

INDEX

A

- Access Control, 89
- Administrator's E-mail Address, 45
- appletalk
 - telnet*, 89
- AutoNet, 140
- Autonet
 - telnet*, 90
- Auto Specify Sender Name, 47

B

- Bidirectional SCSI print, 40
- Bluetooth
 - telnet*, 90

C

- Capture Server IP Address, 42
- Changing the Network Interface Board Configuration
 - SmartDeviceMonitor for Admin*, 77
- Changing the Paper Type
 - SmartDeviceMonitor for Admin*, 78
- Channel, 41
- Communication Mode, 41
- Configuring the Energy Saver Mode
 - SmartDeviceMonitor for Admin*, 81

D

- DDNS Configuration, 37, 39
- Default User Name / Password (Send), 46
- Delivery Option, 42
- DHCP, 91, 139
- dial-up router, 141
- DNS, 92
 - dns*
 - telnet*, 92
- DNS Configuration, 37
- Domain Name, 37, 40, 93

E

- Effective Protocol, 38
- E-mail Account, 47
- E-mail Communication Port, 45
- E-mail Reception Interval, 46
- E-mail Strage in Server, 46
- Ethernet Speed, 38

F

- Fax RX File Transmission, 43
- File Transfer, 42

G

- Gateway Address, 37
- Getting Printer Information over the Network, 112
- Going to the Top Page
 - Web Image Monitor*, 70

H

- Host Name, 39, 94

I

- IEEE 802.11b, 107
 - setting*, 11
- ifconfig, 95
- info, 96
- information
 - Network Interface Board configuration*, 122
 - Network interface board configuration*, 101
 - print job*, 120
 - print log*, 121
 - system log*, 106, 127
- Installing
 - SmartDeviceMonitor for Admin*, 77
- Interface Settings/IEEE 1394, 39
- Interface Settings/IEEE 802.11b, 41
- Interface Settings/Network, 37
- IP Address, 37, 39
- IP over 1394, 40
- IPP, 96

J

- Job Spool, 105

L

- LAN Type, 38
- Locking the Menus on the machine's Control Panel
 - SmartDeviceMonitor for Admin*, 78

M

Machine Name, 39
Managing User Information
 SmartDeviceMonitor for Admin, 79
Max. Reception E-mail Size, 46
message, 127
MIB, 111

N

netware, 96
NetWare 5/5.1, 60, 62
NetWare 6/6.5, 60, 62
Number of Scanner Recalls, 46
NW Frame Type, 38

P

passwd, 97
Password, 97
Permit SNMP V3 Communication, 39
Permit SSL / TLS, 39
Ping Command, 39
POP3 Setting, 45
POP before SMTP, 44
precautions, 141
Printing Commands
 Printing Files Directly from Windows, 134
Printing Files Directly from Windows, 133
prnlog, 97
Program / Change / Delete E-mail
 Message, 46
Program / Change / Delete Subject, 46
Pure IP, 62

R

Reception Protocol, 45
remote printer, setup
 NetWare4.x, 5/5.1, 6/6.5, 66
Rendezvous, 98
Return to Defaults, 41
route, 99

S

Scanner Recall Interval Time, 46
SCSI print (SBP-2), 40
set, 100
Setting a Password
 SmartDeviceMonitor for Admin, 82
Setting Up as a Print Server, 62
 NetWare3.x, 59
 NetWare 4.x, 60
Setting Up as a Remote Printer
 NetWare3.x, 64
 NetWare4.x, 5/5.1, 6/6.5, 66
Setup
 Printing Files Directly from Windows, 133
show, 101
slp, 101
SmartDeviceMonitor for Admin
 Installing, 77
smb, 102
SMB Computer Name, 38
SMB Work Group, 38
SMTP Authentication, 44
SMTP Server, 43
SNMP, 111
snmp, 102
snmp, 105
specifications, 146
spoolsw, 105
SSID Setting, 41
status
 telnet, 106

T

TCP/IP address, 95
telnet, 88
 Autonet, 90
 WINS, 110
Transmission Speed, 41
Types of Menu Configuration and Mode
 Web Image Monitor, 72

U

upnp, 106
Using a Host Name Instead of an IP
 Address
 Printing Files Directly from Windows, 133

W

- Web Image Monitor, 69
- WEP (Encryption) Setting, 41
- WINS
 - telnet*, 110
- WINS Configuration, 38, 40
- Wireless LAN Signal, 41



Free Manuals Download Website

<http://myh66.com>

<http://usermanuals.us>

<http://www.somanuals.com>

<http://www.4manuals.cc>

<http://www.manual-lib.com>

<http://www.404manual.com>

<http://www.luxmanual.com>

<http://aubethermostatmanual.com>

Golf course search by state

<http://golfingnear.com>

Email search by domain

<http://emailbydomain.com>

Auto manuals search

<http://auto.somanuals.com>

TV manuals search

<http://tv.somanuals.com>