

DECT Comfort calls



DW Pro1/Pro2

Quick Guide

Guide rapide

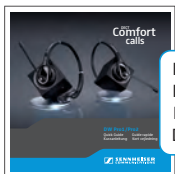
Kurzanleitung

Kort vejledning

 **SENNHEISER**
COMMUNICATIONS

EN
DE
FR
DK

Delivery includes
Lieferumfang
Contenu
Leveringsomfang



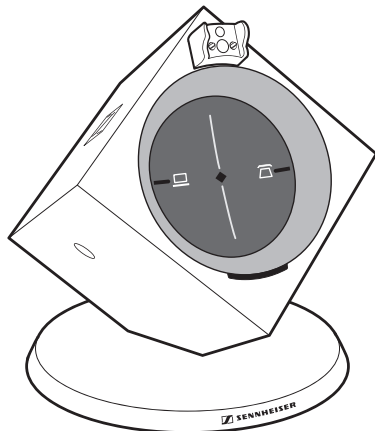
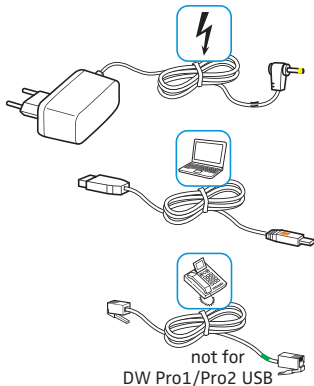
EN
DE
FR
DK



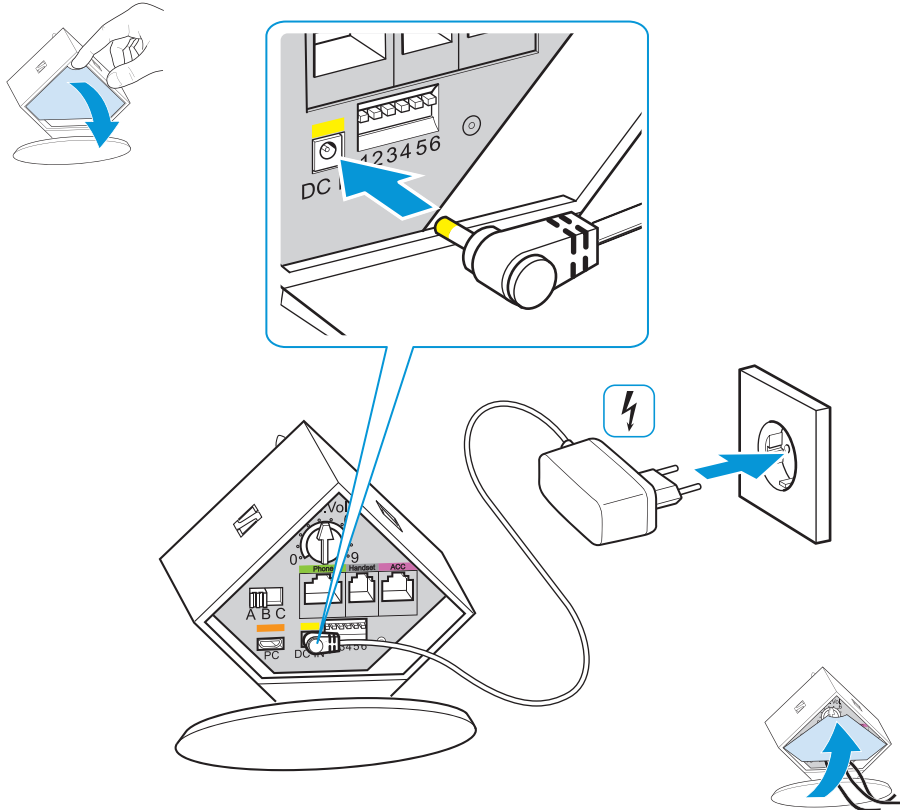
EN SV
DE NOR
FR NL
IT ZH
ES PL
PT TR
DK



EN PT
DE DK
FR SV
IT NOR
ES NL



Connecting the base station to the mains power supply
Basisstation mit Stromnetz verbinden
Raccorder la base au secteur
Forbind basisstationen med lysnettet

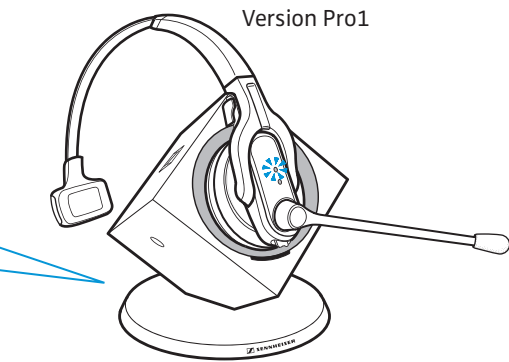
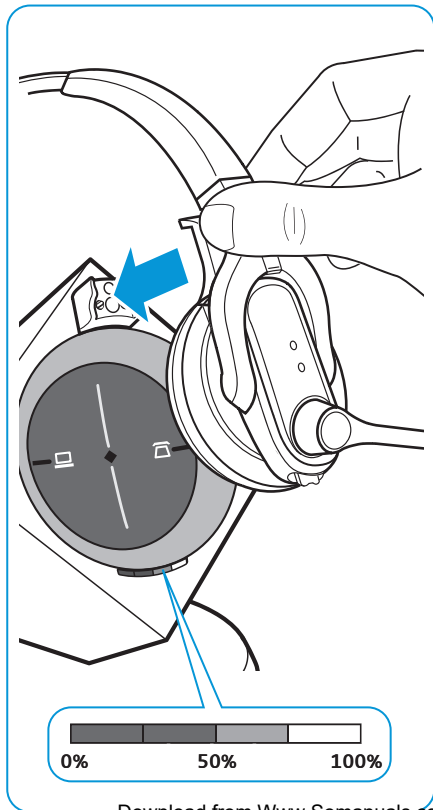


2

Charging the headset
Headset laden
Charger l'oreillette
Lad hovedsættet

50%   20 min

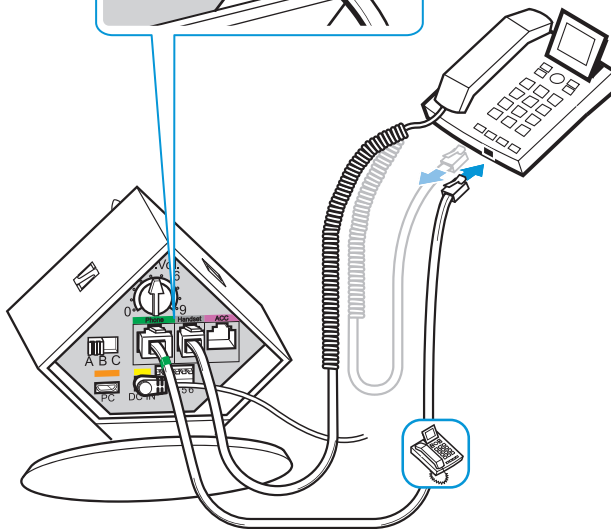
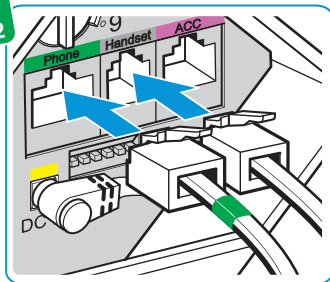
100%   1 h



3

Basisstation mit Festnetztelefon verbinden
Raccorder la base à un téléphone fixe
Forbind basisstationen med fastnettelefon

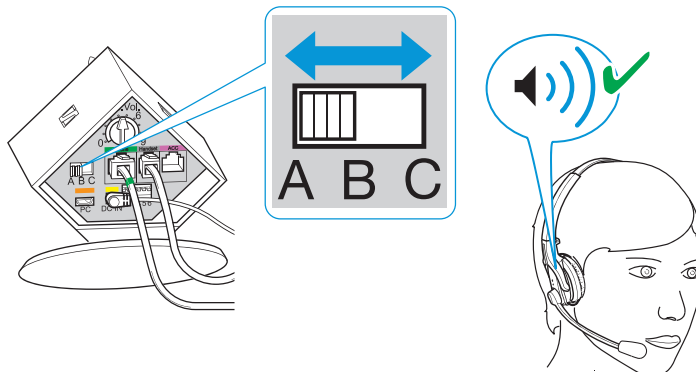
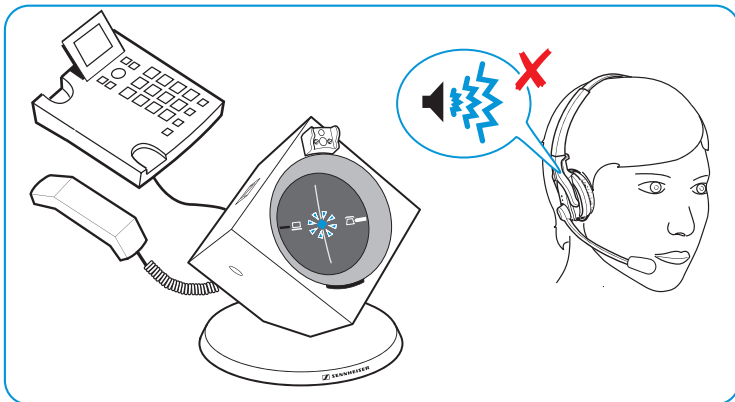
i Only for
DW Pro1/Pro2



PHONE

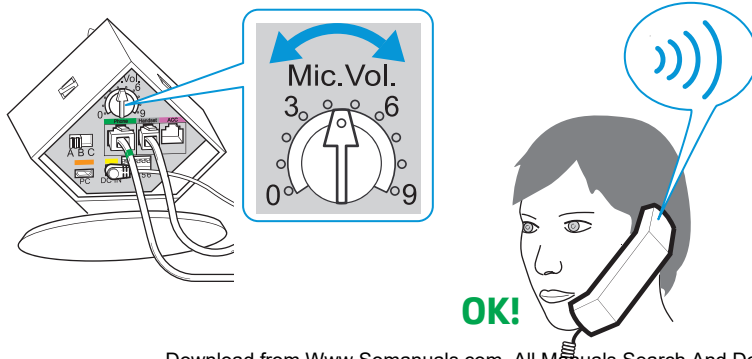
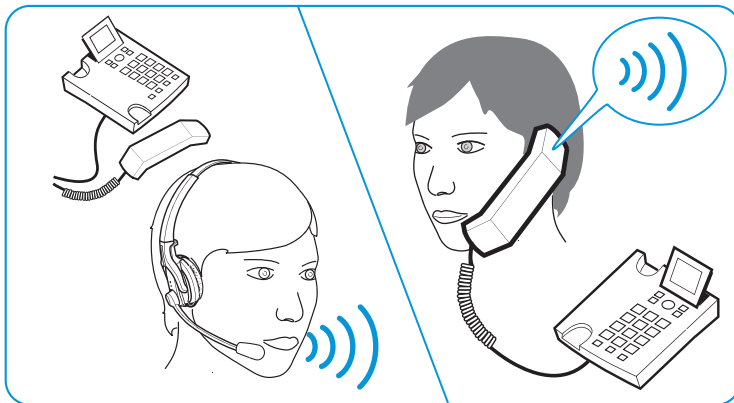
4

Adjusting the dial tone of the telephone
Freizeichen für Telefon einstellen
Régler la tonalité du téléphone
Indstil audiosignalet til telefonen



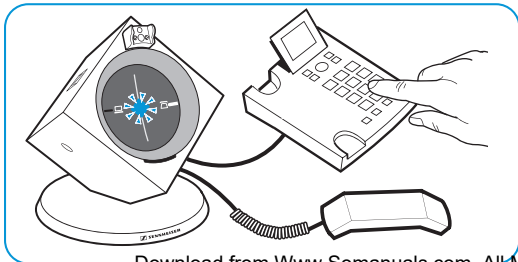
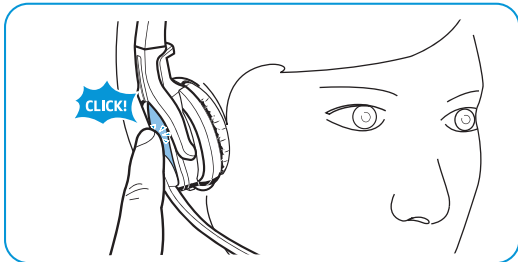
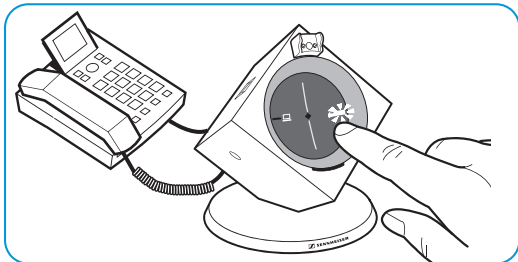
5

Adjusting the microphone sensitivity for outgoing calls
Mikrofonempfindlichkeit für ausgehende Anrufe einstellen
Régler la sensibilité du microphone pour les appels sortants
Indstil mikrofonfølsomheden for udadgående opkald

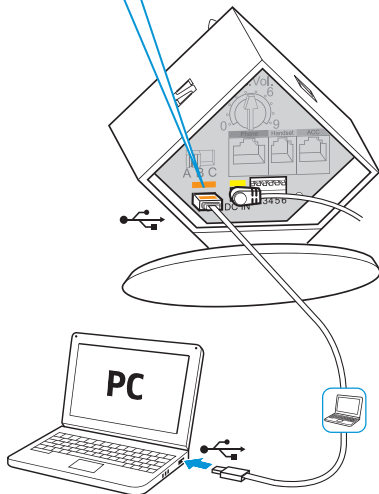
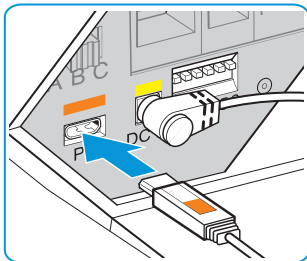


6

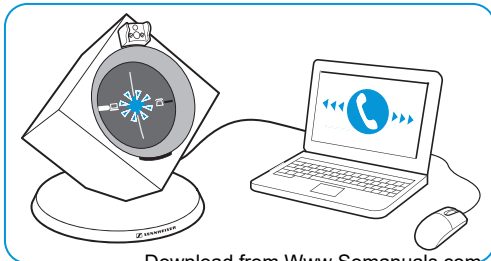
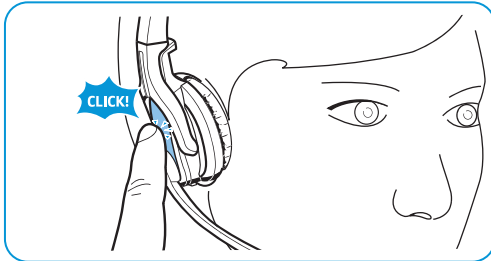
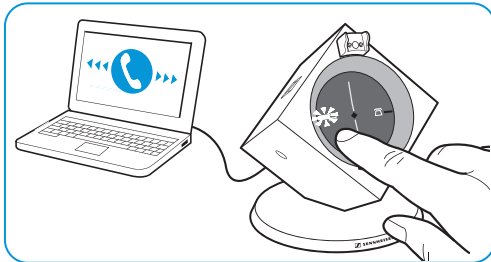
Making calls via the telephone Telefonieren über Telefon Téléphoner depuis le téléphone Telefonér via telefon



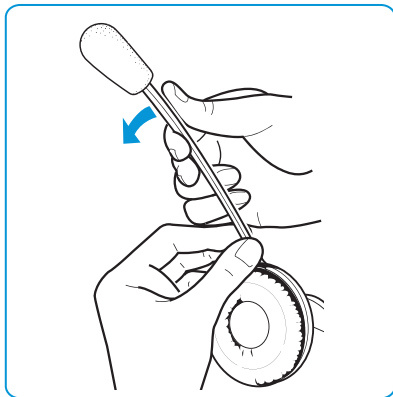
Connecting the base station to a PC
Basisstation mit PC verbinden
Raccorder la base à un ordinateur
Forbind basisstationen med pc



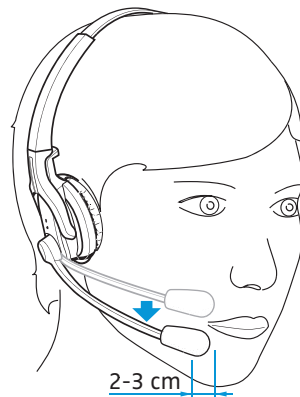
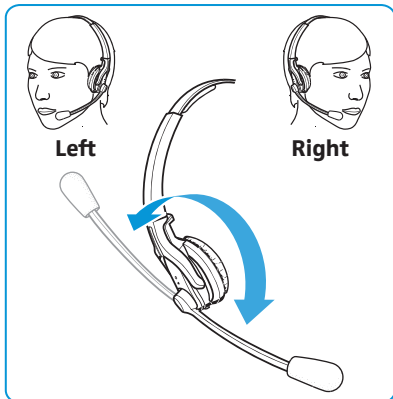
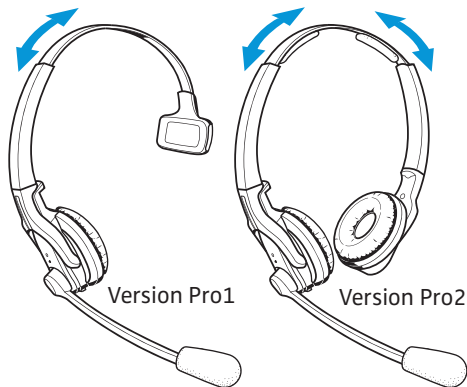
Making calls via the PC
Telefonieren über PC
Téléphoner depuis l'ordinateur
Telefonér via pc



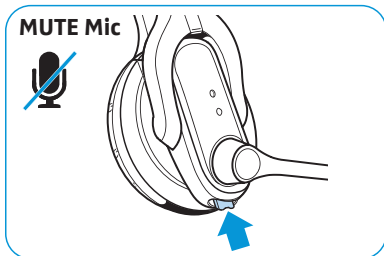
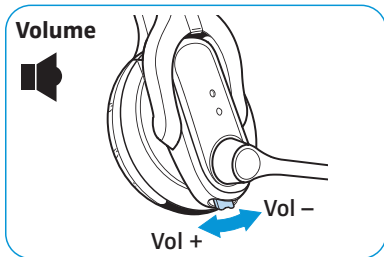
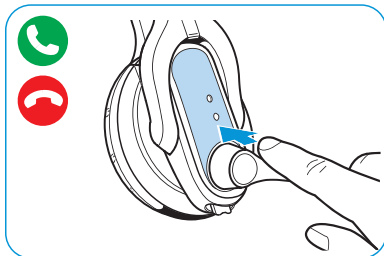
Adjusting the microphone boom
Mikrofonarm anpassen
Régler le bras de micro
Tilpas mikrofonarmen



Wearing the headset
Headset aufsetzen
Porter l'oreillette avec l'arceau
Tag hovedsættet med hovedbøjlen på



Using the headset
Headset verwenden
Utiliser le casque-micro
Anvendelse af headset



EN
DE
FR
DK

Labeling the headset
Headset kennzeichnen
Marquage du casque micro
Identificering af hovedsættet

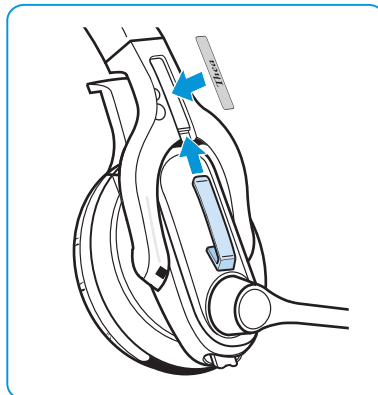
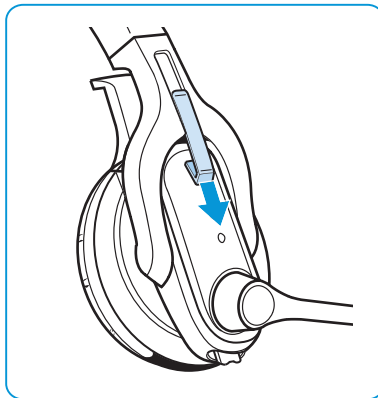


Nameplate-template.pdf

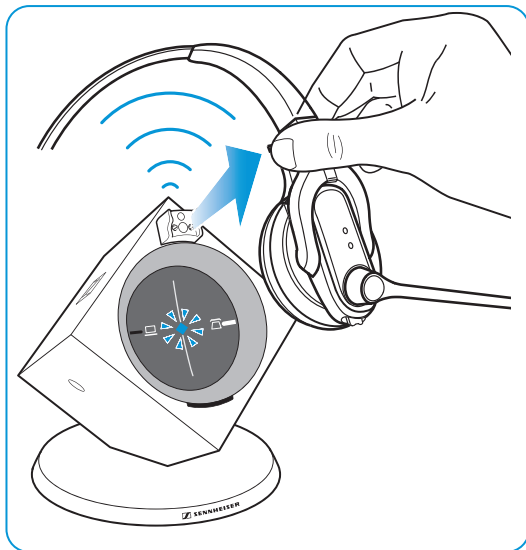
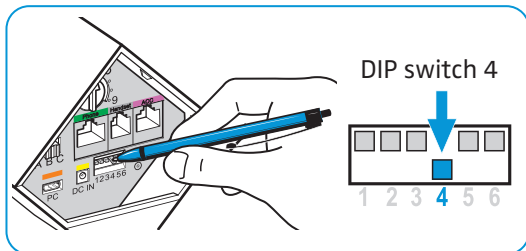
TYPE

PRINT

CUT



Establishing an immediate connection (Auto Link)
Sofortige Verbindung (Auto Link) herstellen
Etablir une connexion immédiate (Auto Link)
Etablér forbindelse (Auto Link) med det samme





Free Manuals Download Website

<http://myh66.com>

<http://usermanuals.us>

<http://www.somanuals.com>

<http://www.4manuals.cc>

<http://www.manual-lib.com>

<http://www.404manual.com>

<http://www.luxmanual.com>

<http://aubethermostatmanual.com>

Golf course search by state

<http://golfingnear.com>

Email search by domain

<http://emailbydomain.com>

Auto manuals search

<http://auto.somanuals.com>

TV manuals search

<http://tv.somanuals.com>