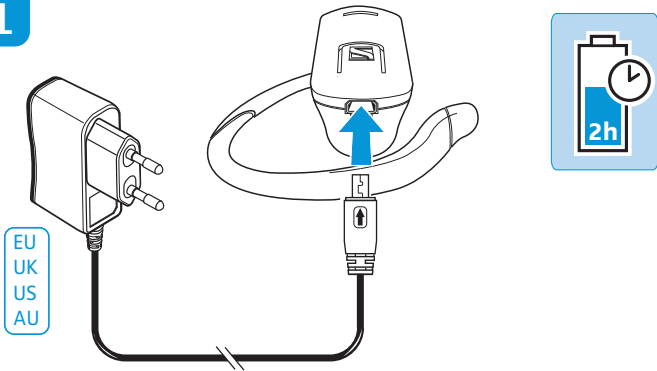




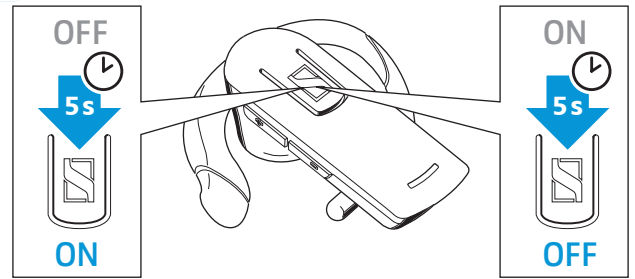
Bluetooth® Headset  
**EZX 60**  
Instruction manual

## Charging

1

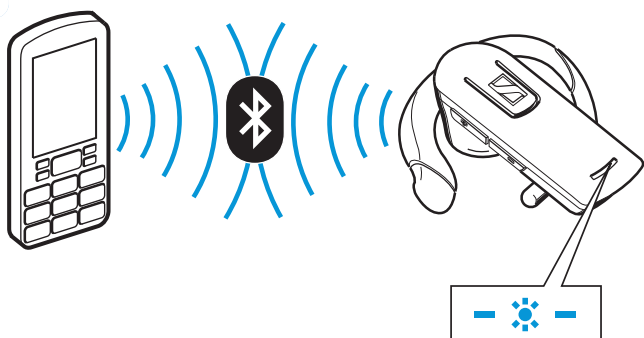
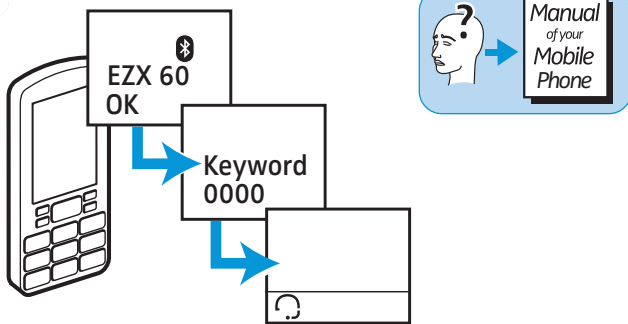
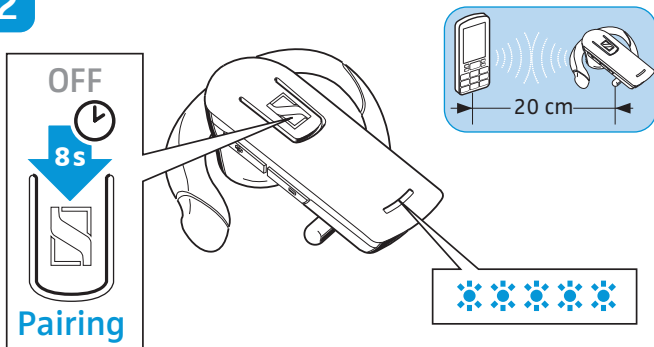


## Power on/off

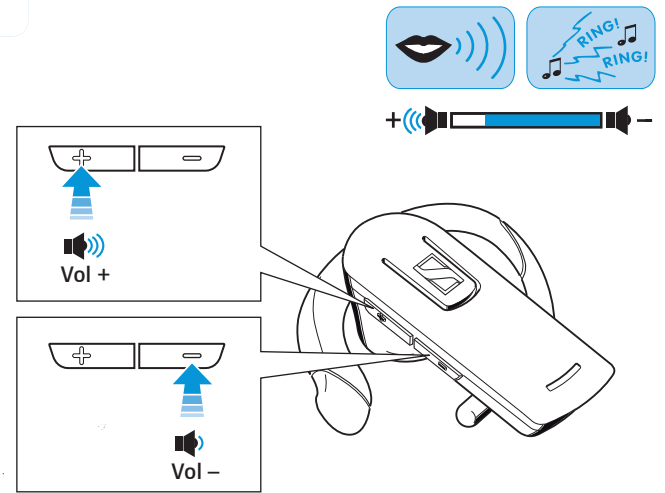


## Pairing

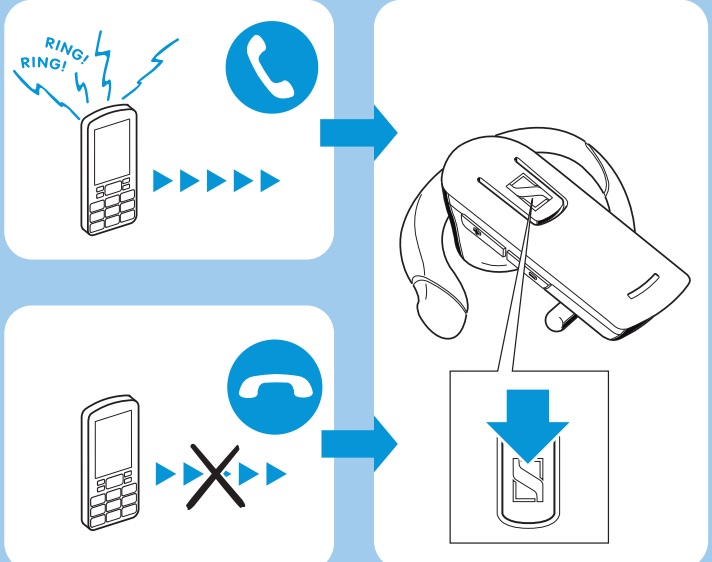
2



## Adjusting the volume



## Accepting and ending calls



# Contents

Important safety information .....	2
Delivery includes .....	4
Features of the EZX 60 .....	5
Operating elements .....	6
Overview of pictograms .....	7
Overview of buttons .....	8
LED indications .....	9
Putting the EZX 60 into operation .....	10
Charging the headset battery .....	10
Switching the headset on .....	11
Establishing Bluetooth connections .....	11
Switching the headset off .....	12
Pairing the headset .....	12
Using the EZX 60 .....	14
Wearing the headset .....	14
Calling .....	15
Muting/unmuting the headset's microphone .....	17
Changing the speaker volume .....	18
Changing the ring tone volume .....	18
If you are out of the transmission range .....	18
Restoring factory default settings .....	19
Cleaning and maintaining the EZX 60 .....	20
Accessories .....	21
Specifications .....	22
Manufacturer declarations .....	23

## Important safety information

The EZX 60 has been manufactured according to the accepted rules of safety and current technology. However, there is still a danger of damage to equipment if the following general safety instructions are not complied with.

- Read this instruction manual.
- Follow these instructions.
- Keep this instruction manual in a location where it is accessible to all users at all times.
- Always include this instruction manual when passing the EZX 60 on to third parties.

### Intended use

The EZX 60 is an accessory for mobile phones or any **Bluetooth**<sup>®</sup> compliant device with a "hands free profile" (HFP) or a "headset profile" (HSP). It is intended for wireless communication via **Bluetooth** connection in dry environments.

It is considered improper use when the EZX 60 is used

- for any application not named in these instructions,
- under operating conditions that deviate from those described in these instructions.

### General instructions

- Never disassemble or modify components of the EZX 60.
- The built-in rechargeable battery may present a fire or chemical burn hazard if mistreated. Therefore, do not disassemble, heat above 40°C (104°F) or incinerate the rechargeable battery.
- Sennheiser Communications is not liable for damages resulting from the loss of connection due to a run flat battery, an old battery or exceeding the transmission range.

### Before operation

- Use the EZX 60 in dry places only and keep liquids and small electrically conductive parts away from the EZX 60 and its connecting sockets.
- Do not expose the EZX 60 to extreme temperatures. Normal operating temperatures are 10°C (50°F) to 40°C (104°F).
- Store the headset in a clean, dust-free environment.

### During charging

- Do not wear the headset when charging.
- Sennheiser Communications is not liable for damages to USB devices that are not consistent with the USB specifications.
- The headset must be charged either with the EZX 60 power supply, the Sennheiser USB car charger adapter or via a USB socket of a computer.
- Never try to charge batteries other than the one in the EZX 60 headset with the EZX 60 power supply or the USB car charger adapter.

### During operation

- Avoid listening at high volume levels for long periods since this leads to permanent hearing damage.
- Observe your country's regulations for the use of mobile phones, headsets and hands-free equipment in traffic. Always focus your attention on driving safely!
- This equipment generates, uses and can radiate radio frequency energy and, if not used in accordance with the instructions, may cause harmful interference to radio communications. However, there is no guarantee that interference will not occur in a particular installation.
- Only use the headset in aircrafts where wireless **Bluetooth** transmission is permitted.
- The headset contains magnets that generate a magnetic field which could cause interferences with cardiac pacemakers and implanted defibrillators. Keep the headset at least 1.2" (3 cm) from cardiac pacemakers or implanted defibrillators.

### Safety instructions for Lithium-Polymer rechargeable batteries

The EZX 60 has a built-in Lithium-Polymer rechargeable battery. If abused or misused, rechargeable batteries may leak.

In extreme cases, rechargeable batteries may even present



- a heat hazard,
- a fire hazard,
- an explosion hazard,
- a smoke and gas hazard.

Please understand that Sennheiser Communications does not accept liability for damage arising from abuse or misuse.

	Keep away from children.
	Do not heat above 40°C (104°F), e.g. do not expose to sunlight or throw into a fire.
	Do not expose to moisture.
	Do not short-circuit.
	Do not mutilate or dismantle.
	Only charge rechargeable batteries with the appropriate Sennheiser Communications chargers.
	Only charge rechargeable batteries at ambient temperatures between 10°C (50°F) and 40°C (104°F).
	Do not charge the rechargeable battery if the device is obviously defective.
	When not using rechargeable batteries for extended periods of time, charge them regularly (every six months for about one hour).
	Store the devices/rechargeable batteries in a cool and dry place at room temperature (approx. 20°C (68°F)).
	Return defective devices or devices with defective rechargeable batteries to your specialist dealer.

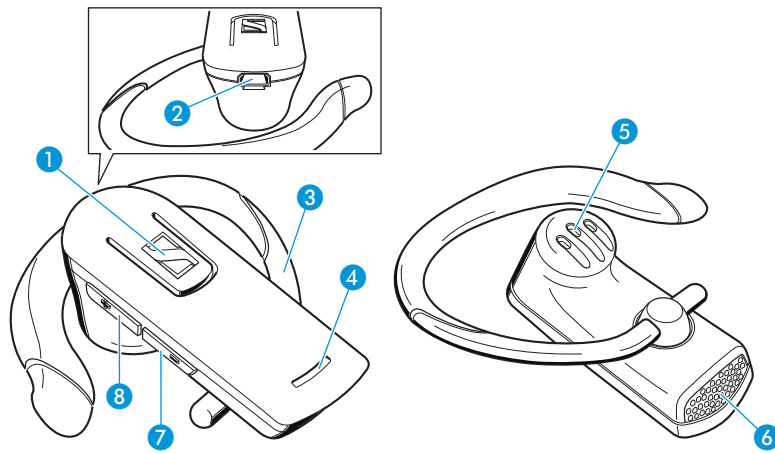
## Delivery includes

- 1 EZX 60 **Bluetooth** headset  
with built-in rechargeable Lithium-Polymer battery
- 1 earhook, flexible
- 1 EZX 60 power supply (EU/UK/US/AU version)
- 1 quick guide
- 1 safety guide

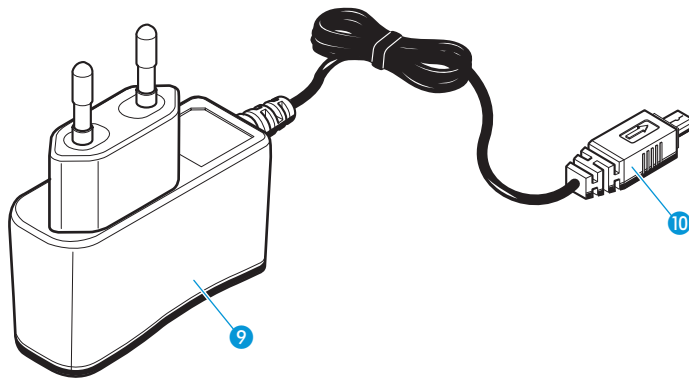
## Features of the EZX 60

- Flexible and removable earhook for easy wear
- Can be worn on either left or right ear
- **Bluetooth 2.1 + EDR:** compatible with all **Bluetooth 1.1, 1.2, 2.0 and 2.1** devices that support the "hands free profile" (HFP) or "headset profile" (HSP)
- Up to 7.5 hours talk time
- Up to 300 hours standby time
- Digital noise and echo suppression
- Superior Sennheiser audio quality
- Extremely lightweight and comfortable (12 grams)

## Operating elements



- 1 Multi-function button
- 2 Socket for power supply
- 3 Earhook (flexible)
- 4 LED
- 5 Earpiece
- 6 Microphone
- 7 Volume down button
- 8 Volume up button







- 9 EZX 60 power supply (EU/UK/US/AU version)
- 10 Charging plug






# Overview of pictograms




## Meaning of the pictograms for pressing a button

Pictogram	Meaning
	Briefly press this button.
	Double-press this button.
	Keep this button pressed.
	Keep this button pressed for 5 seconds.

## Meaning of the pictograms for the flashing of the LED

Pictogram	Meaning
	This pictogram symbolizes a flashing.
	This pictogram symbolizes an interruption.
	This pictogram symbolizes a time interval.

Examples of some of the pictograms that are used throughout this instruction manual:

Pictogram	Meaning
	The LED flashes rapidly.
	The LED flashes once every 3 seconds.
	The LED flashes 3 times per second.










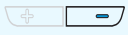


## The pictogram "i"



**This note provides important information!**

Notes marked with the pictogram "i" provide important information on the use of the headset.





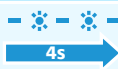
## Overview of buttons

Button	To be pressed	To ...	Page
		accept an incoming call end a call voice dial*	15 16 16
		reject an incoming call transfer a call between headset and mobile phone*	15 17
		redial* mute/unmute the microphone	15 17
		switch the headset on or off	11/12
		enter pairing mode	12
		increase the ring tone volume* or speaker volume by 1 step	18
		increase the ring tone volume* or audio volume continuously	18
		reduce the ring tone volume* or speaker volume by 1 step	18
		reduce the ring tone volume* or audio volume continuously	18

\* These functions must be supported by the mobile phone.

## LED indications

### Meaning during operation

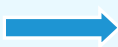

LED flashing	Meaning during operation
 rapidly	Pairing mode
 once every 5 seconds	Searching mode
 once every 5 seconds	Standby mode
 3 times every 4 seconds	Call establishment
 twice every 4 seconds	Active call mode

For a more detailed description of the LED indications, see “Switching the headset on” on page 11.



When the LED 4 flashes three times every 5 seconds, the battery is almost empty.

### Meaning during charging

LED	Meaning during charging
 lights up constantly	Charging in progress
 flashes once every 2 seconds	Charging complete

## Putting the EZX 60 into operation

### Charging the headset battery

If you charge the battery for the first time, allow charging for at least 2.5 hours without interruption. Later, 2 hours will suffice to fully charge the battery. The headset cannot be used during the charging process.

To charge the battery in the headset:

---

**WARNING** Danger of injury!



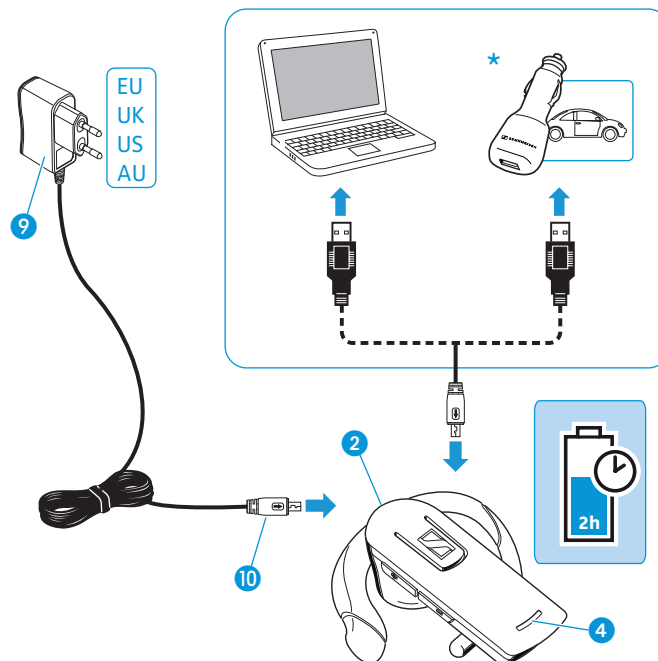
Wearing the headset when charging can cause burns and injuries.

▶ Do not wear the headset when charging.

---

- ▶ Take off the headset and switch it off (see page 12).
- ▶ Connect the charging plug 10 to the socket for power supply 2

If you use the optional charging accessories (see "Accessories" on page 21)\*:



- ▶ Connect the USB charging cable to the socket for power supply 2.
- ▶ Connect the USB plug of the USB charging cable to:
  - a USB socket of a computer
  - or the USB socket of the USB car charger adapter
- ▶ Connect the USB car charger adapter to the appropriate power outlet.

During charging, the LED 4 lights up blue. All active connections will be interrupted. When charging is complete, the LED 4 flashes once every 2 seconds.

A fully charged battery provides a talk time of up to 7.5 hours or a standby time of up to 300 hours.

When the battery is about to run flat:

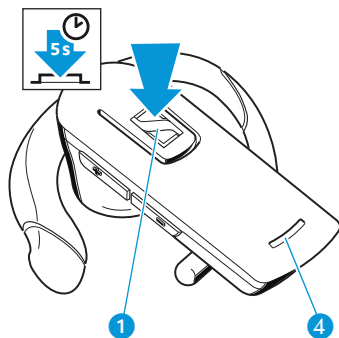
- The LED 4 flashes three times every 5 seconds.
- A low battery warning (five beeps) is heard in the headset every 20 seconds.
- You have several minutes of battery reserve. When the battery is empty, you first hear the five warning beeps and then a descending sequence of tones in the headset. The headset switches off.

## Switching the headset on

To switch the headset on:

- ▶ Press the multi-function button 1 for at least 5 seconds.

An ascending confirmation beep is heard in the headset and the LED 4 flashes twice. The LED 4 then indicates the current operating mode.



When the LED 4 flashes three times every 5 seconds, the battery is almost empty.

### Searching mode



The LED 4 flashes once every 5 seconds:

The headset is paired to one or several **Bluetooth** devices and tries to connect to one of these devices.

### Standby mode

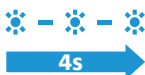


The LED 4 flashes once every 5 seconds:

The headset is paired to one **Bluetooth** device and connected but

- there is currently no active call or
- it has not been used for more than 1 hour.

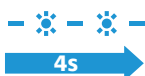
### Call establishment



The LED 4 flashes three times every 4 seconds:

The headset is paired to a **Bluetooth** device and is currently establishing a call connection.

### Active call mode



The LED 4 flashes two times every 4 seconds:

The headset is paired to a **Bluetooth** device and there is currently an active call.

## Establishing Bluetooth connections

If the EZX 60 is not yet paired to any device, see “Pairing the headset” on page 12.

### **WARNING** Danger of malfunction!



The transmitted radio waves can impair the operation of sensitive and unprotected devices.

- ▶ Only use the headset in aircraft where wireless **Bluetooth** transmission is permitted.



After switch-on, the headset tries to connect to the **Bluetooth** device to which it was last connected. If this device cannot be detected, the headset will go into standby mode.

If a certain **Bluetooth** connection cannot be established, because the corresponding **Bluetooth** device is switched off or out of range, you can manually re-establish the connection as follows:

- ▶ Switch off the **Bluetooth** visibility of all **Bluetooth** devices in the vicinity, except for the **Bluetooth** device you want to connect to.
- ▶ Press the multi-function button ①.

The LED ④ flashes once every 5 seconds, indicating that the headset is in searching mode.

When the headset and the **Bluetooth** device detect each other, the connection is established. The LED ④ flashes 3 times and a high confirmation beep is heard in the headset.



The headset saves up to 8 **Bluetooth** connection profiles of **Bluetooth** devices with which it has been paired. If you want to re-establish a connection with a device with which the headset has been paired, the connection needs to be established from this device (for details, refer to the manual of the **Bluetooth** device). Before doing so, make sure that the last paired device is disconnected.

## Switching the headset off

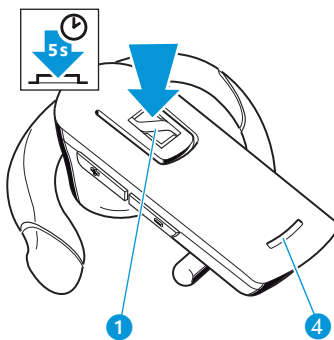
The headset switches off automatically 1 hour after the last **Bluetooth** connection has ended (standby mode).

To manually switch the headset off:

- ▶ Press and hold the multi-function button ① for 5 seconds.

A descending confirmation beep is heard in the headset and the LED ④ flashes 3 times, indicating that the headset switches off.

Pairing and volume settings are saved automatically when the headset is switched off.



## Pairing the headset

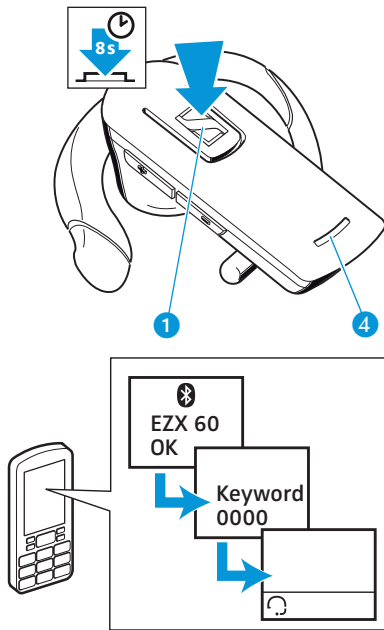
You can pair the headset to up to 8 **Bluetooth** compliant devices. These **Bluetooth** devices (mobile phones or similar devices) must support the "hands free profile" (HFP) or "headset profile" (HSP).

Once you have paired the headset to a **Bluetooth** device, the headset automatically connects to the last paired **Bluetooth** device each time this device and the headset detect each other.

### Pairing to a mobile phone

Before pairing to a mobile phone, make sure:

- that the headset's battery has been charged as described under "Charging the headset battery" on page 10,
- that your mobile phone is switched on and **Bluetooth** visibility is enabled,
- that the headset is switched off and placed close to the mobile phone (approx. 20 cm or 7").



To enter pairing mode:

- ▶ Press and hold the multi-function button **1** for 8 seconds.  
A sequence of ascending tones is heard in the headset and the LED **4** flashes rapidly, indicating that the headset is in pairing mode.

- ▶ Once the headset is detected by the mobile phone, select "Sennheiser EZX 60" and connect.

When the **Bluetooth** connection is successfully established, the headset is identified as "Sennheiser EZX 60" on the mobile phone display.

- ▶ When the mobile phone prompts a keyword, enter 4 zeros ("0000").  
If pairing was successful, the LED **4** flashes slowly.

Some mobile phones require an additional step to connect to the headset. For details, refer to the manual of the mobile phone.

Once paired, most mobile phones are able to automatically transfer the audio to the headset and, in addition, show a headset symbol in their display.

#### Pairing is not successful

If pairing is not successful within 5 minutes, the headset returns to standby mode.

- ▶ On the mobile phone, start a search for **Bluetooth** devices (see the manual of your mobile phone) and follow any instructions displayed on the mobile phone display.

#### Pairing to other Bluetooth devices

If you wish to pair the headset to other **Bluetooth** devices such as laptops, please refer to the manual of the **Bluetooth** device.

#### Pairing to several mobile phones

If you wish to pair the headset to another mobile phone, you first have to disconnect it from the first mobile phone (see the manual of the first mobile phone). The headset saves up to 8 pairing profiles. As soon as the headset is switched on, it tries to connect to the mobile phone to which it was last connected. If this mobile phone is not detected by the headset, you can manually connect it to one of the other 7 mobile phones (see the manual of the respective mobile phone).



To delete the list of the last paired **Bluetooth** devices, you can reset the EZX 60 (see "Restoring factory default settings" on page 19).

## Using the EZX 60

### Wearing the headset

**WARNING** Danger of accidents!

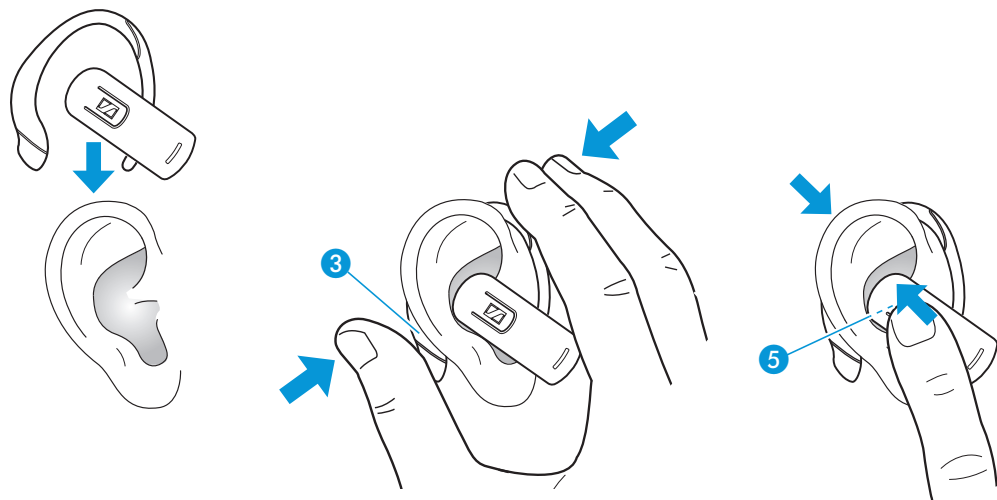


The headset can draw off your attention and cause accidents.

- ▶ Do not wear the headset in an environment that requires your special attention (e.g. in traffic or when performing skilled jobs)!

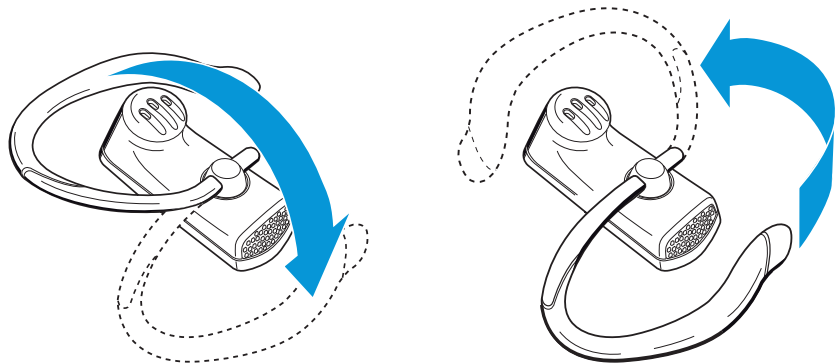
- ▶ Switch the headset on (see page 11).
- ▶ Put the headset on your ear.
- ▶ Carefully shape the earhook **3** so that it follows the contour of your ear and gives a very secure fit.
- ▶ Position the headset so that the earpiece **5** sits just above the opening of the ear canal.

The headset fits tightly to your ear.



Note that the earhook has to be turned when changing from the left to the right ear or vice versa.

- ▶ Rotate the earhook as shown to change the wearing ear of the headset.

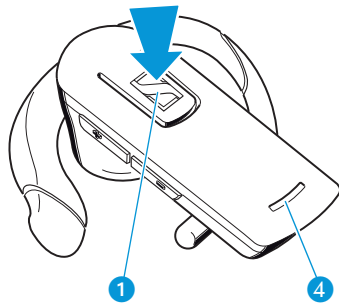




## Calling

Provided the headset is switched on, paired and within the transmission range of a mobile phone (see page 12), you can accept and make calls with the EZX 60.

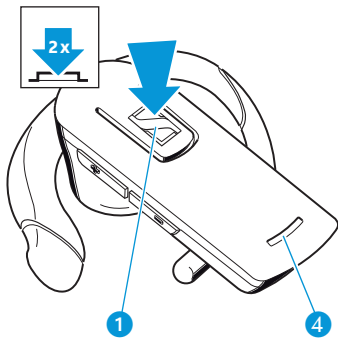
### Accepting a mobile phone call



When you receive a call via your mobile phone and the headset is already switched on, you hear a ring tone in the headset and the LED 4 flashes 3 times every 4 seconds. If the mobile phone is set to silent alert or vibrating alert, you will hear no ring tone in the headset.

- ▶ Press the multi-function button 1.
- An ascending confirmation beep is heard in the headset.
- ▶ Start to talk.

### Rejecting call

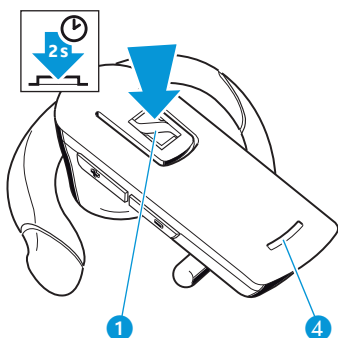


- ▶ Double-press the multi-function button 1.
- A descending confirmation beep is heard in the headset. The ringing stops. Depending on the settings of the mobile phone or **Bluetooth** device, the call is either rejected or transferred to a voice mailbox.

### Making a call

- ▶ Dial the number on your mobile phone.
- If your mobile phone automatically transfers the call audio to the headset, a beep is heard in the headset. If your mobile phone does not automatically transfer the call audio to the headset, you have to press a button on your mobile phone to manually transfer the call audio to the headset.
- ▶ Start to talk.

### Redialling the last number dialled\*



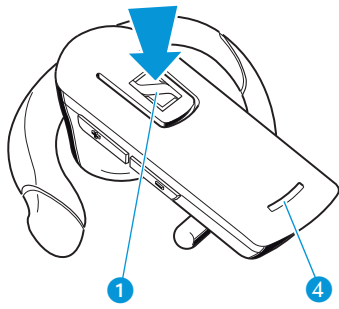
Redialling the last number dialled is only possible with certain mobile phones or **Bluetooth** devices. Please refer to the manual of your mobile phone or **Bluetooth** device.

- ▶ Press and hold the multi-function button 1 for 1 to 2 seconds.
- A beep is heard in the headset. The last dialled number is redialled.

If redialling has failed (e.g. because there is no last dialled number stored in the mobile phone, the call is rejected by the other party or the other party cannot be reached), two descending beeps are heard in the headset.

\* This function must be supported by the mobile phone.

**Voice dialling\***



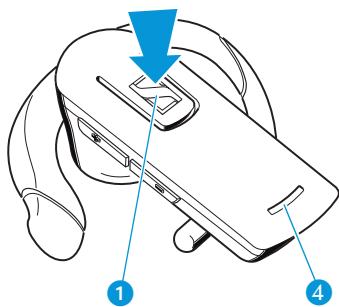
The voice dialling function must be supported by your mobile phone or **Bluetooth** device, supporting "hands free profile" (HFP) respectively, and be activated.

- ▶ Press the multi-function button **1**.  
Two ascending beeps are heard in the headset.
- ▶ Say the name of the other party that you recorded in the phone.  
The mobile phone or **Bluetooth** device automatically dials the corresponding number. If voice dialling is successful, two ascending beeps are heard in the headset.
- ▶ Start to talk.

If voice dialling has failed, two descending beeps are heard in the headset.

\* This function must be supported by the mobile phone.

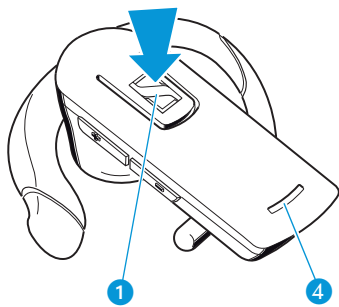
**Stopping redialling or voice dialling\***



- ▶ To stop dialling during a redialling or voice dialling attempt, press the multi-function button **1**.  
A confirmation beep is heard in the headset. Then either redialling or voice dialling is ended.

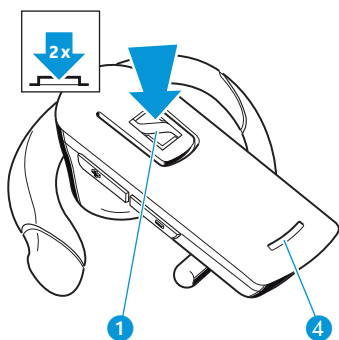
\* This function must be supported by the mobile phone.

**Ending a call**



- ▶ During the call, press the multi-function button **1**.  
A confirmation beep is heard in the headset.
- ▶ Refer to the manual of your mobile phone for information on whether your mobile phone hangs up automatically or you have to hang up manually.

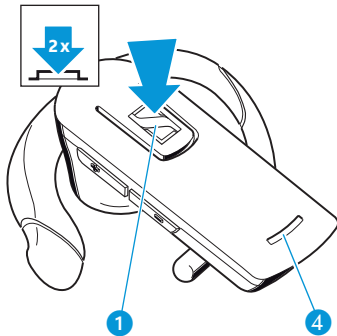
**Transferring an active call from the mobile phone to the headset\***



- ▶ Double-press the multi-function button **1**.  
A high confirmation beep is heard in the headset. The call audio is transferred from the mobile phone to the headset.
- ▶ Refer to the manual of your mobile phone for information on how to transfer the call audio from your mobile phone to the headset.

\* This function must be supported by the mobile phone.

### Transferring an active call from the headset to the mobile phone\*



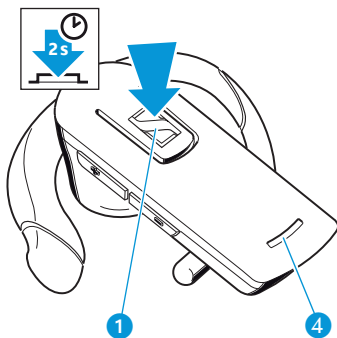
- ▶ Double-press the multi-function button ①.

A low confirmation beep is heard in the headset. The call audio is transferred to the mobile phone. The headset returns to standby mode.

\* This function must be supported by the mobile phone.

### Muting/unmuting the headset's microphone

To mute the headset's microphone during a call:



- ▶ Press and hold the multi-function button ① for 1 to 2 seconds.

Two low mute indication beeps are heard in the headset every 4 seconds while the microphone is muted.

To unmute the headset's microphone:

- ▶ Press and hold the multi-function button ① for 1 to 2 seconds.

A sequence of low confirmation beeps is heard in the headset. The microphone works as usual.

## Changing the speaker volume

### **WARNING** Hearing damage due to high volumes!



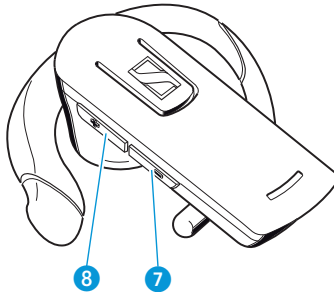
Listening at high volume levels for long periods can lead to permanent hearing defects. Please protect your hearing. Sennheiser headsets also sound exceptionally good at low volumes.

▶ Set the volume to a medium level.

You can only adjust the speaker volume during an active call:

- ▶ To increase the volume step-by-step, press the volume up button **8**.
- ▶ To reduce the volume step-by-step, press the volume down button **7**.
- ▶ To change the volume continuously, press and hold the respective volume button.

The speaker volume can be adjusted in 8 steps. The volume is factory preset to a medium level. When the minimum or maximum volume is reached, a high or low beep is heard in the headset. When you switch off the headset, the current volume setting is saved.



Depending on your mobile phone you can also change the speaker volume using your mobile phone (see the manual of the respective mobile phone).

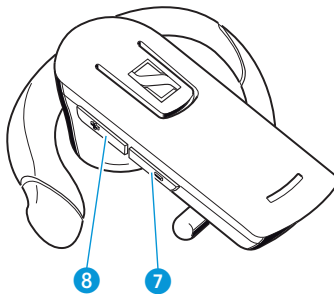
## Changing the ring tone volume\*

You can adjust the ring tone volume while the headset is in standby mode (no active call):

- ▶ To increase the volume step-by-step, press the Volume up button **8**.
- ▶ To reduce the volume step-by-step, press the Volume down button **7**.
- ▶ To change the volume continuously, press and hold the respective volume button.

The ring tone volume can be adjusted in 8 steps. The volume is factory preset to a medium level. When the minimum or maximum volume is reached, a high or low beep is heard in the headset. When you switch off the headset, the current volume setting is saved.

\* This function must be supported by the mobile phone.



## If you are out of the transmission range

Calling is only possible in the **Bluetooth** transmission range of the mobile phone or **Bluetooth** device, respectively. The transmission range largely depends on environmental conditions such as wall thickness, wall composition etc. With a free line of sight, the transmission range of most mobile phones or **Bluetooth** devices is up to 10 meters.

If the headset leaves the transmission range of the mobile phone or **Bluetooth** device:

- The sound quality deteriorates before the connection finally breaks down.
- Your mobile phone or **Bluetooth** device displays the loss of connection.
- Please refer to the manual of your mobile phone or **Bluetooth** device for information on whether the call is automatically transferred to the mobile phone or **Bluetooth** device or requires an acknowledgement to do so.

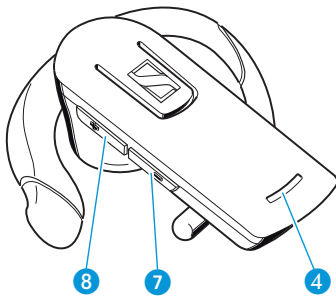
The headset will then go into standby mode.

## Restoring factory default settings

You can restore the following settings to their factory default settings:

- speaker volume
  - ring tone volume
  - pairing
- ▶ Set the headset to pairing mode as described under “Establishing Bluetooth connections” on page 11.
- ▶ Press the volume up button **8** and the volume down button **7** three times in quick succession (i.e. press **8** then **7** then **8** then **7** then **8** then **7**).

The LED **4** flashes 4 times, indicating that the reset was successful and the headset then switches off.



## Cleaning and maintaining the EZX 60

---

**CAUTION** Liquids can damage the electronics of the device!

Liquids entering the housing of the device can cause a short circuit and damage the electronics.

- ▶ Keep all liquids far away from the device.
  - ▶ Do not use any cleansing agents or solvents.
- 

### Cleaning the headset

- ▶ Only clean with a dry cloth. Do not use any liquids, solvents or cleansing agents.

### Storing the headset

If you do not use the headset for extended periods of time:

- ▶ Charge the built-in rechargeable battery every 6 months for about 1 hour.
- ▶ Store the headset in a clean and dry environment.

## Accessories

The following EZX 60 accessories are available from your specialist dealer:

Cat. No.	Accessory/spare part
504115	EZX 60 power supply, EU version
504116	EZX 60 power supply, UK version
504117	EZX 60 power supply, US version
504170	EZX 60 power supply, AU version
502309	USB charging cable
502310	Power supply, EU version, for use with USB charging cable (502309)
502311	Power supply, UK version, for use with USB charging cable (502309)
502312	Power supply, US version, for use with USB charging cable (502309)
502313	USB car charger adapter, for use with USB charging cable (502309)
504118	EZX 60 earhook

## Specifications

### EZX 60

Dimensions	55 x 26 x 58 mm (W x H x D)
Weight	approx. 12 g
Standby time	up to 300 hrs
Talk time	up to 7.5 hrs
Charging time	before first use: 2.5 hrs following: 2 hrs
Range	10 m
Speaker type	dynamic, neodymium magnet
Microphone type	omni-directional electret microphone
Audio	digital noise and echo suppression
Operating temperature range	+10°C (+50°F) to +40°C (+104°F)
Operating relative humidity	20 to 85%, non-condensing
Storage temperature range	-20°C (-4°F) to +60°C (140°F)
Storage relative humidity	10 to 95%, non-condensing

### EZX 60 power supply unit

Nominal input voltage	100 to 240 V~
Nominal input current	max. 0.2 A
Mains frequency	50 to 60 Hz
Nominal output voltage	5 V ---
Nominal output current	max. 150 mA
Operating temperature range	+10°C (+50°F) to +40°C (+104°F)
Operating relative humidity	20 to 85%, non-condensing
Storage temperature range	-20°C (-4°F) to +60°C (140°F)
Storage relative humidity	10 to 95%, non-condensing
Weight	approx. 75 g

### Bluetooth



Bluetooth®	version 2.1 + EDR
Range	up to 10 m
Transmission frequency	2.4 GHz
Protocols	HSP, HFP



# Manufacturer declarations

## Warranty regulations

Sennheiser Communications A/S gives a warranty of 24 months on this product.

For the current warranty conditions, please visit our website at [www.sennheiser.com](http://www.sennheiser.com) or contact your Sennheiser partner.

## In compliance with the following requirements

- RoHS Directive (2002/95/EC)
- WEEE Directive (2002/96/EC)
- Battery Directive (2006/66/EC)

## CE Declaration of Conformity

- R&TTE Directive (1999/5/EC)
- EMC Directive (2004/108/EC)
- Low Voltage Directive (2006/95/EC)

The declaration is available at [www.sennheiser.com](http://www.sennheiser.com).

Before putting the product into operation, please observe the respective country-specific regulations!

## Statements regarding FCC and Industry Canada



This equipment has been tested and found to comply with the limits for a Class B digital device, pursuant to Part 15 of the FCC Rules and RSS-210 of Industry Canada.

These limits are designed to provide reasonable protection against harmful interference in a residential installation. This equipment generates, uses and can radiate radio frequency energy and, if not installed and used in accordance with the instructions, may cause harmful interference to radio communications. However, there is no guarantee that interference will not occur in a particular installation. If this equipment does cause harmful interference to radio or television reception, which can be determined by turning the equipment off and on, the user is encouraged to try to correct the interference by one or more of the following measures:

- Reorient or relocate the receiving antenna.
- Increase the separation between the equipment and receiver.
- Connect the equipment into an outlet on a circuit different from that to which the receiver is connected.
- Consult the dealer or an experienced radio/TV technician for help.

This device complies with Part 15 of the FCC Rules. Operation is subject to the following two conditions:

1. this device may not cause harmful interference, and
2. this device must accept any interference received, including interference that may cause undesired operation.

Changes or modifications not expressly approved by Sennheiser electronic Corp. may void the users authority to operate the equipment.

This Class B digital apparatus complies with Canadian ICES-003.

#### Rechargeable batteries



The supplied rechargeable batteries can be recycled.

Please return them to your specialist dealer or to your Sennheiser partner.

#### WEEE Declaration



Your Sennheiser Communications product was developed and manufactured with high quality materials and components which can be recycled and/or reused. This symbol indicates that electrical and electronic equipment must be disposed of separately from normal waste at the end of its operational lifetime.

Please dispose of this product by taking it to your local collection point or recycling center for such equipment. This will help to protect the environment in which we all live.

#### Trademarks

Sennheiser is a registered trademark of Sennheiser electronic GmbH & Co. KG.

The **Bluetooth**<sup>®</sup> word mark and logo are registered trademarks and are owned by the Bluetooth SIG, Inc.



Sennheiser Communications A/S  
Langager 6, 2680 Solrød Strand, Denmark  
[www.sennheisercommunications.com](http://www.sennheisercommunications.com)

Publ. 12/09  
A02

## Free Manuals Download Website

<http://myh66.com>

<http://usermanuals.us>

<http://www.somanuals.com>

<http://www.4manuals.cc>

<http://www.manual-lib.com>

<http://www.404manual.com>

<http://www.luxmanual.com>

<http://aubethermostatmanual.com>

Golf course search by state

<http://golfingnear.com>

Email search by domain

<http://emailbydomain.com>

Auto manuals search

<http://auto.somanuals.com>

TV manuals search

<http://tv.somanuals.com>