

SCOTSMAN'S PREMIER WARRANTY

- Limited Lifetime Rust Free Warranty on CM³ FoodZone
- 3 Years Parts and Labor on all components
- 5 Years Parts and Labor on CME & SCE Evaporator
- 5 Years Parts on Compressor and Condenser
- 1 Year Parts and Labor on CSW45 only

CM³ ICE MACHINE ACCESSORIES

	CME306	CME456	CME256	CME506	CME656	CME806	CME1056	CME1356	CME1656	CME1856	CME2006
Remote Condensers & Accessories											
ERC101-1A - Remote Condenser				■							
ERC111-1A - Remote Condenser		■									
ERC201-32A - Remote Condenser					■	■					
ERC211-1A - Remote Condenser		■									
ERC311-32A - Remote Condenser							■				
ERC402-32A - Remote Condenser					■	■					
ERC411-32A - Remote Condenser								■	■		
ERC611-32A - Remote Condenser											■
KCMR-120 - Fan Relay Kit when 2 units are on one condenser		■									
KCMR-230 - Fan Relay Kit when 2 units are on one condenser					■	■					
RCKCME6GX - Remote condensing kit							■	■	■		
Remote Line Sets											
RTE25-25ft. precharged R-404A tubing		■		■	■	■	■	■	■		
RTE40-40ft. precharged R-404A tubing		■		■	■	■	■	■	■		
RTE75-75ft. precharged R-404A tubing		■		■	■	■	■	■	■		
LRTE25-25ft. precharged R-404A tubing											■
LRTE40-40ft. precharged R-404A tubing											■
LRTE75-75ft. precharged R-404A tubing											■
Stacking Kits											
KSCME6-30			■	■	■	■					
KSCME6-MD							■				
KSCME6-LG-B								■	■	■	■
Bin Top Kits											
KBT22 for use with BH900 Bin			■	■	■	■	■				
KBT23 for use with BH800 Bin			■	■	■	■	■				
KBT27 for use with HTB250, HTB350, HTB555 & BH550 Bins	■	■									
Ice Bagger											
BGS10 (Includes Easy Bagger, Bags (250), Tape Sealer and 1 Roll of Tape)	■	■	■	■	■	■	■	■	■	■	■
Water Filtration Systems By EverPure®											
Filtration Systems, Replacements & Prefilters											
SSM1-A-Single System	■	■	■	■	■						
SSM2-A-Twin System						■	■	■	■	■	■
SSM3-A-Triple System								■	■	■	■
SSMRC1-Replacement Cartridge (package of 1)	■	■	■	■	■	■	■	■	■	■	■
SSMRC6-Replacement Cartridge (package of 6)	■	■	■	■	■	■	■	■	■	■	■
SC10-A Coarse Prefilter	■	■	■	■	■	■	■	■	■	■	■
SC20-A Coarse Prefilter	■	■	■	■	■	■	■	■	■	■	■

Consult your Scotsman Price Schedule for complete details before ordering.

AgION Now protected with AquaArmor™ utilizing AgION™, a silver-based anti-microbial compound that reduces the growth of bacterial, microorganisms, algae, mold and slime on ice machine surfaces. AgION is a trademark of AgION Technologies and is registered with the EPA.



YOU'LL VALUE THE DIFFERENCE.™

775 Corporate Woods Parkway • Vernon Hills, IL 60061 • (800) SCOTSMAN • Fax (847) 913-9844
 Website: www.scotsman-ice.com • customer.service@scotsman-ice.com



YOU'LL VALUE THE DIFFERENCE.™

YOU'LL VALUE THE CM³® DIFFERENCE.



The Scotsman CM³ is an extraordinary ice machine. It actually thinks for itself, allowing the CM³ to provide a greater amount of ice faster, more reliably and less expensively than any other machine in its class. Add to this the new CM³ contemporary styled stainless steel construction, and you'll see why it's a popular choice in the Foodservice Industry.

The difference is evident from the start. The CM³ offers a very competitive purchase price, and its easy set-up and maintenance assures lower service costs. It also uses less water and electricity, so you'll enjoy additional savings over the life of the machine. In fact, when the lower utility costs are combined with the initial purchase cost, the CM³ provides the Lowest Lifetime Ownership Cost in the industry.



Now
PROTECTED
with
AquaArmor™
with
AQUION

CME256 on HTB555

Our individually made contour cube ice form allows cubes to nestle in a glass for high liquid displacement. This unique design eliminates splashing—liquid flows over the contour shapes smoothly and easily.



AutoIQ™plus Control System

Scotsman's universal solid-state controller monitors operating conditions and constantly adjusts the ice machine for maximum ice production. Easy-to-read diagnostic lights make service simpler and faster resulting in lower costs. AutoIQplus also controls a variety of performance enhancing system functions dramatically increasing the reliability of CM³ ice machines.

ReliaClean® Water System

The ReliaClean® Water System constantly separates minerals from water and offers adjustable water-flushing to accommodate variations in water quality. As a result, the CM³ minimizes water usage and maintenance.

Adaptive Harvest

This patented function automatically adjusts for ambient temperature changes, reducing ice-making cycle times. The very fast ice recovery reduces the need to purchase ice during peak periods.

AutoRestart

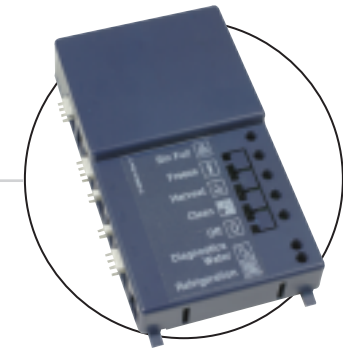
Eliminating expensive service calls, this patented function automatically restarting the machine after sensing fluctuations in power and water utilities.

CM³ Evaporator

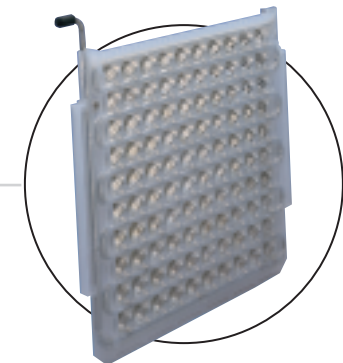
The hot-tin-dipped, molecularly-bonded durable plate construction has been field-tested and proven to be 99.4% reliable over five years.

Rust-free Polyethylene Base and Food Zone

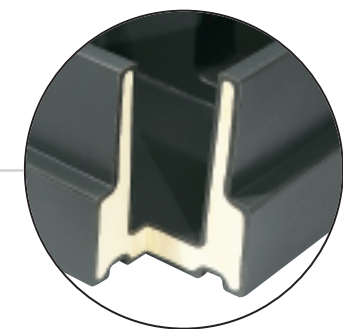
The never-rust polyethylene base is insulated with 1½ inches of foam, which keeps the water and food zone cool, reducing operating costs.



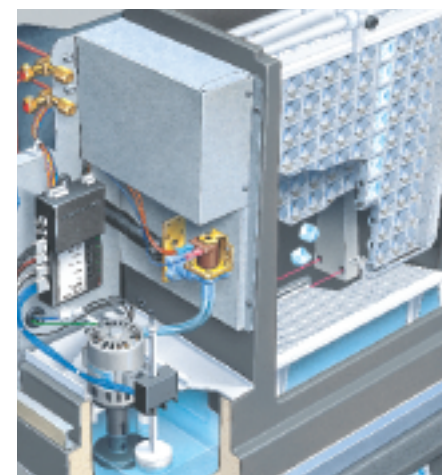
AutoIQ™plus Control System



CM³ Evaporator



Rust-Free Rotocast Base & Food Zone



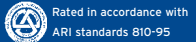
The CM³ is so efficient and reliable, it can identify and correct problems before you're even aware they exist.






How much ice do you need? Here are some typical examples: Full Service Restaurants: 1.7 Lbs. per customer; Fast Food Restaurants: .9 lbs. per customer; Cocktail lounges: 3 lbs. per customer.

SCOTSMAN 22" & 30" CUBERS

The real benefit of the CM³ is that you'll always have ice. If you need 1,000 lbs. of ice a day or less, you've got your choice of a variety of incredibly reliable CM³ cubers. Scotsman's 22" cubers fit virtually anywhere, and will still produce up to 500 lbs. of ice a day, while our 30" cubers can handle higher demand and still provide Best-in-Class value.

No matter which cuber you choose, you'll find that Scotsman CM³ cubers offer the Lowest Lifetime Ownership Cost of any ice machine on the market. That's a difference you'll value for a long time.

Scotsman	22" CUBERS			30" CUBERS			
	CME306 [†]	CME456 [†]	CME256 [†]	CME506 [†]	CME656	CME806	CME1056
Dimensions -WxDxH	22x24x28	22x24x28	30x24x27	30x24x27	30x24x27	30x24x27	30x24x28
Electrical -Volts/Hz/Phase	115/60/1	115/60/1	115/60/1	115/60/1	208-230/60/1*	208-230/60/1*	208-230/60/1*
Max Fuse Size	20 20	20 20 20	20 20	20 20 20	20 20 20	20 20 20	20 20 20
Compressor HP	1/2 1/2	3/4 3/4 3/4	1/2 1/2	3/4 3/4 3/4	1 1/2 1 1/2 1 1/2	2 1/2 2 1/2 2 1/2	2 1/2 2 1/2 2 1/2
No. of Wires	2 2	2 2 2	2 2	2 2 2	2 2 2	2 2 2	2 2 2
Min. Circuit Ampacity	16.0 16.0	19.0 19.0 19.0	16.0 16.0	19.0 19.0 20.0	13.6 12.7 16.9	17.5 16.0 20.0	18.75 17.25 17.25
BTUs per Hour	5,100	6,275	5,100	6,275	12,500	15,400	15,400
Shipping Weight -Lbs./Kg	185/84	205/93	195/88	210/95	225/102	235/107	280/127
Ice Production - 24 Hours - Power & Water Usage ***							
70° Air/50° Water							
Air-Cooled -Lbs./Kg	340/154	480/218	307/139	500/227	705/320	770/349	975/442
Water-Cooled -Lbs./Kg	330/150	490/222	320/145	510/231	645/293	765/347	910/413
Remote-Cooled -Lbs./Kg	NA	496/225	NA	425/193	625/284	750/340	950/431
Ice Production - 24 Hours - Power & Water Usage ***							
90° Air/70° Water 							
Air-Cooled -Lbs./Kg	260/118	400/182	240/109	410/186	555/252	630/286	800/363
KWH	8.7	7.4	9.5	7.4	6.6	7.2	6.1
Water (Potable)	20.0	17.5	27.0	23.0	24.0	24.0	18.0
Water-Cooled -Lbs./Kg	295/134	454/206	250/114	413/188	560/255	670/305	820/373
KWH	7.1	6.0	7.7	6.8	6.0	6.0	5.1
Water (Potable)	20.4	17.9	25.0	28.0	26.0	22.0	16.8
Water (Cond.)	174.0	144.0	190.0	170.0	130.0	155.0	140.0
Remote-Cooled -Lbs./Kg	NA	440/200	NA	400/182	550/259	670/305	820/373
KWH	NA	7.5	NA	8.8	7.6	7.8	6.0
Water (Potable)	NA	18.0	NA	28.0	28.0	24.0	17.9
Bin Options** (Dimensions: WxDxH)							
BH360 22x31x44 Bin Capacity 275 Lbs.	■	■					
HTB250 30x31.5x22.5 Bin Capacity 190 Lbs.	■ with bin top	■ with bin top	■	■	■	■	
HTB350 30x31.5x29.5 Bin Capacity 250 Lbs.	■ with bin top	■ with bin top	■	■	■	■	
HTB555 30x31.5x44.5 Bin Capacity 420 Lbs.	■ with bin top	■ with bin top	■	■	■	■	■
BH550 30x31.5x44 Bin Capacity 410 Lbs.	■ with bin top	■ with bin top	■	■	■	■	■
BH800 42x31.5x44 Bin Capacity 580 Lbs.			■ with bin top	■ with bin top	■ with bin top	■ with bin top	■ with bin top
BH900 48.5x33.75x44 Bin Capacity 740 Lbs.			■ with bin top	■ with bin top	■ with bin top	■ with bin top	■ with bin top

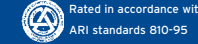
 Air Cooled
  Water Cooled
  Remote Cooled
  Ice machines rated in accordance with ARI standards 810-95
  Bins rated in accordance with ARI standards 820-95






** Add an additional 6" for leg height on all bins. ***KWH & water based on 100 lbs. of ice.
 *3-Phase available. The above specifications are based on a single phase model. See individual spec sheet for 3 phase models.
 †Please note: 208-230 volt units are available for CME306, CME456, CME256, CME506.

SCOTSMAN 48" CUBERS

You'll not only value the difference of these large machines, you'll marvel at the amount of ice they can provide. With production capacities of up to 2,000 lbs. a day, these machines are built for hard work. Because they incorporate all of the same CM³ technology as smaller Scotsman machines, Scotsman's 48" cubers also provide Best-in-Class value over a ten-year operating period.



Scotsman	48" CUBERS			
	CME1356	CME1656	CME1856	CME2006
Dimensions -WxDxH	48x24x28	48x24x28	48x24x28	48x24x28
Electrical -Volts/Hz/Phase	208-230/60/1*	208-230/60/1*	208-230/60/1*	208-230/60/1*
Max. Fuse Size	30 30 30	30 30 30	40	40
Compressor HP	3 1/2 3 1/2 3 1/2	3 1/2 3 1/2 3 1/2	4	4
No. of Wires	2 2 2	2 2 2	2	2
Min. Circuit Ampacity	26.7 23.9 24.9	26.7 23.9 24.9	30	30
BTUs per Hour	21,000	24,000	40,000	40,000
Shipping Weight -Lbs./Kg	350/159	365/166	386/174	370/168
Ice Production - 24 Hours - Power & Water Usage ***				
70° Air/50° Water				
Air-Cooled -Lbs./Kg	1400/635	1600/726	NA	NA
Water-Cooled -Lbs./Kg	1400/635	1600/726	1825/821	NA
Remote-Cooled -Lbs./Kg	1400/635	1550/703	NA	1930/874
Ice Production - 24 Hours - Power & Water Usage ***				
90° Air/70° Water 				
Air-Cooled -Lbs./Kg	1145/520	1250/567	NA	NA
KWH	6.3	6.0	NA	NA
Water (Potable)	19.5	18.0	NA	NA
Water-Cooled -Lbs./Kg	1275/578	1440/655	1695/763	NA
KWH	5.0	4.7	5.2	NA
Water (Potable)	19.1	18.0	19.0	NA
Water (Cond.)	147.0	143.0	160.0	NA
Remote-Cooled -Lbs./Kg	1260/573	1400/635	NA	1740/789
KWH	5.5	5.2	NA	5.8
Water (Potable)	20.0	18.0	NA	19.0
Bin Options (Dimensions: WxDxH**)				
BH1100 48 x 34 x 50 860 lb. Bin Capacity	■	■	■	■
BH1300 60 x 34 x 50 1100 lb. Bin Capacity	■	■	■	■
BH1600 60 x 34 x 62 1375 lb. Bin Capacity	■	■	■	■

 Air Cooled
  Water Cooled
  Remote Cooled
  Ice machines rated in accordance with ARI standards 810-95
  Bins rated in accordance with ARI standards 820-95

** Add an additional 6" for leg height on all bins. ***KWH & water based on 100 lbs. of ice.
 *3-Phase available. Above specifications are based on a single phase unit. See individual spec sheet for 3 phase models.



CME456 on BH360



CME806 on HTB555



CME1856 on BH1600

The CME1856 AND CME2006 are the only ice machines to employ the unique Copeland® Glacier Scroll Compressor which adds to its reliability and worry-free operation.


CM³ PROVIDES THE LOWEST LIFETIME OWNERSHIP COST PERIOD.

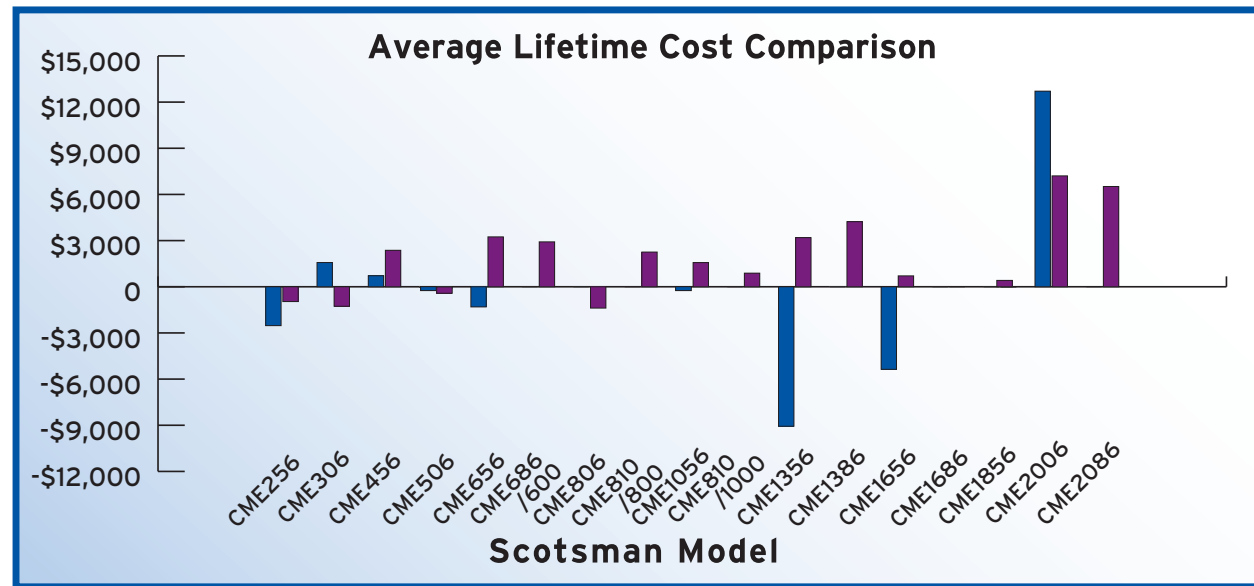
If you want to see some real differences you'll value, do a direct comparison between Scotsman CM³ cubers and the competition. Don't just compare Scotsman to a single competitor, compare against the best competitive performer in each category. Scotsman still comes out on top in nearly all cases.

Scotsman CM³ cubers consistently rate Best in Class for water usage, electricity usage, ice production and initial purchase cost. As a result of the lower utility bills and the competitive purchase price, the CM³ presents the Lowest Lifetime Ownership Cost in nearly every ARI category. In fact, compared to our competitors, the CME2086 can save you \$7,500 over a 10 year period.*

Having the lowest lifetime ownership cost presents very tangible savings. However, there are other ways the Scotsman CM³ will save you money over its lifetime: its easy set-up and serviceability cuts labor costs; best-in-class ice production and fast recovery saves the expense of having to purchase ice during peak times; and the overall reliability of the Scotsman CM³ means less downtime and fewer service costs.

*Savings based on ARI KWH and water usage rates of key competitors

 Rated in accordance with ARI standards 810-95



■ Vs. Competitor 1 ■ Vs. Competitor 2



CME306 on BH360



CME1056 on BH550



CME1656 on BH900




SELF-CONTAINED MACHINES: RELIABILITY & SAVINGS IN ONE PACKAGE

Scotsman's self-contained cubers have a key benefit: they fit under a standard 40" counter so they can be placed in the most convenient location. Despite their small size, Scotsman self-contained cubers offer large capacity and their rust-free rotocast plastic bins are insulated to increase efficiency and reduce melting. Of course, like all Scotsman cubers, they've been designed to be extremely inexpensive to operate and maintain, and are backed by the best warranty in the industry.

From rectangle and contour to gourmet ice cubes, Scotsman has self-contained models ranging in ice production from 40 lbs. to 300 lbs. of ice per day.

SELF-CONTAINED ICE MACHINES					
	CSW45	CSE60	SCE170		SCE275
Dimensions —WxDxH*	14 ¹³ / ₁₆ x21 ⁷ / ₈ x33 ¹³ / ₁₆	18x20 ⁷ / ₈ x28 ⁷ / ₁₆	24 ¹ / ₄ x24x33	30x30 ¹ / ₂ x33	
Electrical —Volts/Hz/Phase	115/60/1	115/60/1	115/60/1	115/60/1	
Bin Capacity —Lbs./Kg	25/11	28/12	70/32	90/41	
Ice Form	Rect. Cube	Gourmet Cube	Rect. Cube	Contour Cube	
Finish	Wh. Enamel	Stainless Steel	Grey Roto Cast	Grey Roto Cast	
	*	*	*	☑	*
Max. Fuse Size	15	15	15	15	15
Compressor HP	1/5	1/4	1/4	1/4	3/5
No. of Wires	2	2	2	2	2
Min. Circuit Ampacity	Cord.	5.7	Cord.	Cord.	Cord.
Shipping Weight —Lbs./kg	101/46	105/48	185/84	230/104	
Ice Production – 24 Hours – Power & Water Usage ***					
70° Air/50° Water					
Air-Cooled —Lbs./Kg	44/20	69/31	165/75	290/132	
Water-Cooled —Lbs./Kg	NA	NA	165/75	305/138	
Ice Production – 24 Hours – Power & Water Usage ***					
90° Air/70° Water					
Air-Cooled —Lbs./Kg	40/18	54/25	110/50	220/100	
KWH	16.7	17.3	12.8	11.4	
Water (Potable)	48.0	49.0	50.0	29.0	
Water-Cooled —Lbs./Kg	NA	NA	142/64	264/120	
KWH	NA	NA	9.5	8.2	
Water (Potable)	NA	NA	55.0	28.0	
Water (Cond.)	NA	NA	210	240	

* Air Cooled ☑ Water Cooled *Add an additional 6" for leg height, except the CSW45

 Models CSE60, SCE170 & SCE275 are rated in accordance with ARI standards 810-95 & 820-95

***KWH & water based on 100 Lbs. of ice



CSE60



SCE170



SCE275

To find out more about the Scotsman CM³ line, visit our web site at www.scotsman-ice.com

Free Manuals Download Website

<http://myh66.com>

<http://usermanuals.us>

<http://www.somanuals.com>

<http://www.4manuals.cc>

<http://www.manual-lib.com>

<http://www.404manual.com>

<http://www.luxmanual.com>

<http://aubethermostatmanual.com>

Golf course search by state

<http://golfingnear.com>

Email search by domain

<http://emailbydomain.com>

Auto manuals search

<http://auto.somanuals.com>

TV manuals search

<http://tv.somanuals.com>