

plantronics®

LEARN MORE

M25™ - M29™ series

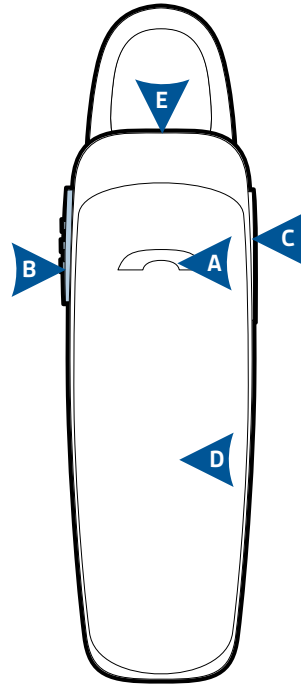
TAKE A GOOD LOOK

▶ CALL BUTTON

- Take a call or end it (1 tap)
- Redial (2 taps)
- Initiate phone's voice-dialing (2-second press until tone is heard)
- Reconnect lost Bluetooth® connection (1 tap if the headset doesn't automatically reconnect)
- Activate pairing mode after initial set up (press until red/white LED flashes)
- Exit DeepSleep™ mode (1 tap)

▶ POWER SWITCH

- On (slide back)
- Off (slide forward)



▶ VOLUME BUTTON

- Volume presets (1 tap per level change)

▶ INDICATOR LIGHT (LED)

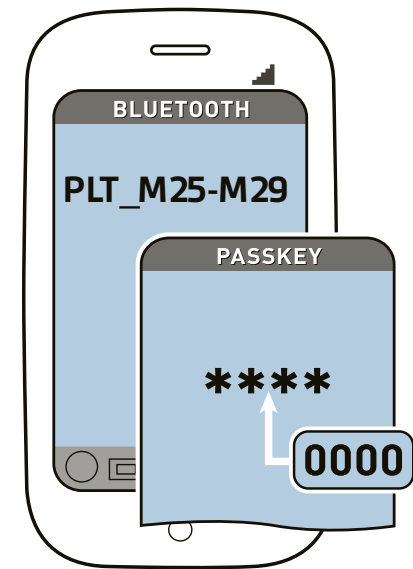
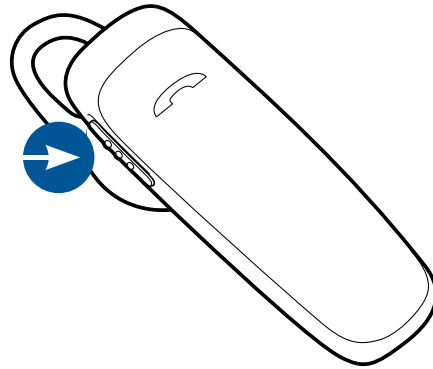
- Charging (solid red until charged)
- Very low battery (3 red flashes at powering on)
- Pairing mode (repeating red/white flashes)

▶ MICRO USB CHARGING PORT

- Use with the AC wall charger:
 - 1 hour before first use
 - 2 hours (full charge)
- Do not use headset while charging

Your headset may look slightly different than the illustration, but will still work as described.

CONNECT TO YOUR PHONE



“Pairing” is the set-up process of introducing your headset to your phone. Before using your headset for the first time, you must pair it with your Bluetooth-enabled phone.

“Multipoint” lets you pair this headset with two phones so you can answer a call from either phone.

1. READY

First Time, Right Out of the Box:

Turn on the headset. The LED flashes red/white to indicate pairing mode.

Pair New or Second Phone:

Turn on headset. Press Call button until the LED flashes red/white.

2. SET

Activate the Bluetooth feature on your phone, then use phone menus to “add,” “search” or “scan” new Bluetooth devices.

For Example:

iPhone: Settings > General > Bluetooth: On (starts the search for devices)

BlackBerry®: Settings/options > Bluetooth: On > Search for devices

Android™: Settings > Wireless & Networks > Bluetooth: On > Scan for devices

3. CONNECT

Select “PLT_M25-M29” from the list of Bluetooth devices shown on your phone.

If phone asks for a passcode, enter four zeros (0000). You may see **** on screen.

Some phones also ask to confirm headset connection after pairing.

Headset LED will stop flashing red/white once successfully paired/connected.

You can now make a call using your phone’s keypad or voice-dialing feature.

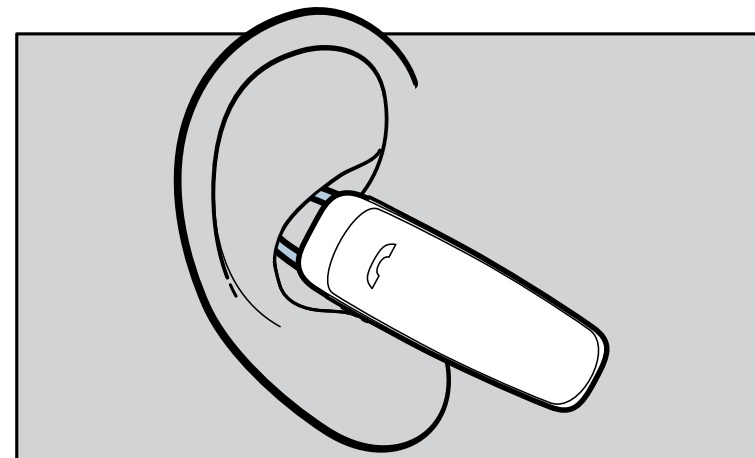
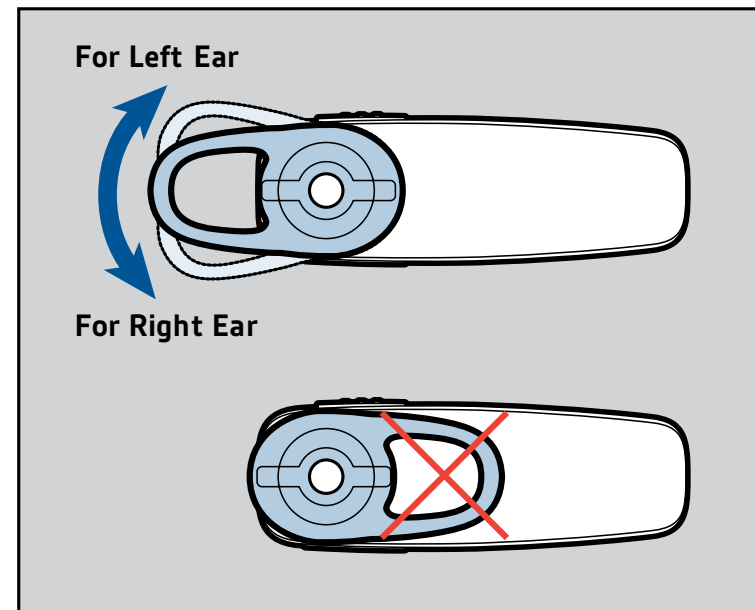
TRY IT ON

The loop of the gel eartip tucks into the back curve of your ear for a stable fit.

Try on the headset. The eartip is positioned to suit most people, but you may want to rotate it to best fit your left or right ear.

The gel eartip and speaker click into matching grooves so the eartip doesn't move out of place during use.

For best voice pickup, always check that the headset points towards the corner of your mouth.



TIPS

Stay Near Your Phone

Bluetooth has a working “range” of up to 33 feet between the phone and headset before audio degrades and the connection is lost.

Try DeepSleep

If you leave your headset powered on but out of range from your paired phone for more than 90 minutes, your headset will conserve its battery power by entering into DeepSleep mode.

This power-saving mode keeps your headset charged for up to 5 months so it’s ready when you need it.

Once back in range with your phone, tap the Call button to exit DeepSleep mode. If your phone is also ringing, tap the Call button again to answer your call.

Know How to Reconnect

Your headset tries to reconnect a lost connection. If it can’t, then tap the Call button once or manually reconnect via the phone’s Bluetooth device menu.

If your headset remains out of range for more than 90 minutes, the DeepSleep mode will activate.

Use an iPhone to Check Headset Battery

An icon representing the battery level of your headset is automatically displayed on-screen beside the phone’s battery level icon.

Listen to Music and More

If your phone also has the Bluetooth “A2DP” stereo music feature, then your music, podcasts, favorite internet radio and other streaming audio can be heard through this headset.

Use Multipoint One Call at a Time

Once you have paired your two phones, it’s easy to answer calls from either phone.

When already on a call, you will hear a ringtone notification of the incoming call from the second paired phone.

To answer a second call from the other phone, you must end the current call (tap Call button) so new call automatically answers.

If you choose not to answer the second call, it will go to voicemail.

SPECIFICATIONS

Talk Time	Up to 11 hours
Standby Time	Up to 16 days
DeepSleep Mode	Up to 150 days
Operating Distance (Range)	Up to 33 feet (10 meters), Class II
Headset Weight	8 grams
Charge Connector	Micro USB charging
Battery Type	Rechargeable non-replaceable lithium ion polymer
Charge Time (Maximum)	2 hours for full
Power Requirements	5V DC – 180mA
Bluetooth Version	Bluetooth v3.0
Bluetooth Profiles	A2DP, Hands-Free (HFP) Profile 1.6 and Headset (HSP) Profile 1.2
Operating Temperature	32°F - 104°F (0 - 40°C)
Storage Temperature	32°F - 104°F (0 - 40°C)
Charging Temperature	32°F - 104°F (0 - 40°C)

NEED MORE HELP?

Read these guides for set up, use and safety tips. For more help, don't return to the store, call our team of problem solvers at **1-866-363-2583**.

© 2012 Plantronics, Inc. All Rights Reserved. Bluetooth is a registered trademark of Bluetooth SIG, Inc. and any use by Plantronics is under license. All other trademarks are the property of their respective owners.
Patents US 5,712,453; Patents Pending. 87607-06 (4-12) EN-US



Z302
N10687

Free Manuals Download Website

<http://myh66.com>

<http://usermanuals.us>

<http://www.somanuals.com>

<http://www.4manuals.cc>

<http://www.manual-lib.com>

<http://www.404manual.com>

<http://www.luxmanual.com>

<http://aubethermostatmanual.com>

Golf course search by state

<http://golfingnear.com>

Email search by domain

<http://emailbydomain.com>

Auto manuals search

<http://auto.somanuals.com>

TV manuals search

<http://tv.somanuals.com>