

Panasonic

Network Camera Operating Instructions

Model No. **WV-NM100**



Before attempting to connect or operate this product,
please read these instructions carefully and save this manual for future use.

We declare under our sole responsibility that the product to which this declaration relates is in conformity with the standards or other normative documents following the provisions of Directives EEC/73/23 and EEC/89/336.

Wir erklären in alleiniger Verantwortung, daß das Produkt, auf das sich diese Erklärung bezieht, mit der folgenden Normen oder normativen Dokumenten übereinstimmt. Gemäß den Bestimmungen der Richtlinie 73/23/EEC und 89/336/EEC.

Nous déclarons sous notre seule responsabilité que le produit auquel se réfère la présente déclaration est conforme aux normes ou autres documents normatifs conformément aux dispositions des directives CEE/73/23 et CEE/89/336.

Nosotros declaramos bajo nuestra única responsabilidad que el producto a que hace referencia esta declaración está conforme con las normas u otros documentos normativos siguiendo las estipulaciones de las directivas CEE/73/23 y CEE/89/336.

Noi dichiariamo sotto nostra esclusiva responsabilità che il prodotto a cui si riferisce la presente dichiarazione risulta conforme ai seguenti standard o altri documenti normativi conformi alle disposizioni delle direttive CEE/73/23 e CEE/89/336.

Wij verklaren als enige aansprakelijke, dat het product waarop deze verklaring betrekking heeft, voldoet aan de volgende normen of andere normatieve documenten, overeenkomstig de bepalingen van Richtlijnen 73/23/EEC en 89/336/EEC.

Vi erklærer os eneansvarlige for, at dette produkt, som denne deklaration omhandler, er i overensstemmelse med standarder eller andre normative dokumenter i følge bestemmelserne i direktivene 73/23/EEC og 89/336/EEC.

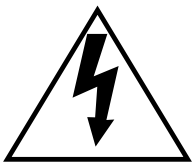
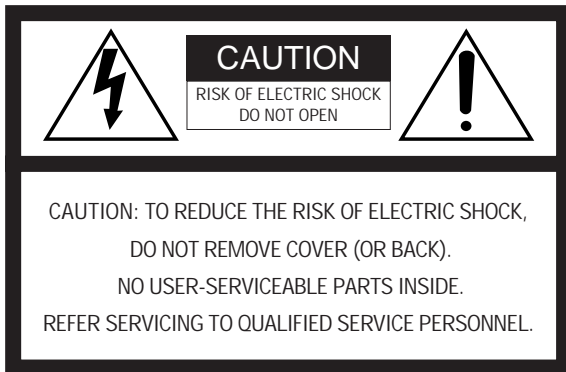
Vi deklarerar härmed vårt fulla ansvar för att den produkt till vilken denna deklaration hänvisar är i överensstämmelse med standarddokument, eller andra normativa dokument som framställs i EEC-direktiv nr. 73/23 och 89/336.

Ilmoitamme yksinomaisella vastuullamme, että tuote, jota tämä ilmoitus koskee, noudattaa seuraavia standardeja tai muita ohjeellisia asiakirjoja, jotka noudattavat direktiivien 73/23/EEC ja 89/336/EE. säädöksiä.

Vi erklærer oss alene ansvarlige for at produktet som denne erklæringen gjelder for, er i overensstemmelse med følgende normer eller andre normgivende dokumenter som følger bestemmelsene i direktivene 73/23/EEC og 89/336/EEC.

Caution:

Before attempting to connect or operate this product, please read the label on the bottom.



The lightning flash with arrowhead symbol, within an equilateral triangle, is intended to alert the user to the presence of uninsulated "dangerous voltage" within the product's enclosure that may be of sufficient magnitude to constitute a risk of electric shock to persons.



The exclamation point within an equilateral triangle is intended to alert the user to the presence of important operating and maintenance (servicing) instructions in the literature accompanying the appliance.



Power disconnection. Unit with or without ON-OFF switches have power supplied to the unit whenever the power cord is inserted into the power source; however, the unit is operational only when the ON-OFF switch is in the ON position. Unplug the power cord to disconnect the main power for all unit.

The serial number of this product may be found on the bottom of the unit.

You should note the serial number of this unit in the space provided and retain this book as a permanent record of your purchase to aid identification in the event of theft.

Model No. WV-NM100

Serial No. _____

WARNING: To prevent fire or electric shock hazard, do not expose this appliance to rain or moisture. The apparatus shall not be exposed to dripping or splashing and that no objects filled with liquids, such as vases, shall be placed on the apparatus.

IMPORTANT SAFETY INSTRUCTIONS

- 1) Read these instructions.
- 2) Keep these instructions.
- 3) Heed all warnings.
- 4) Follow all instructions.
- 5) Do not use this apparatus near water.
- 6) Clean only with dry cloth.
- 7) Do not block any ventilation openings. Install in accordance with the manufacturer's instructions.
- 8) Do not use near any heat sources such as radiators, heat registers, stoves, or other apparatus (including amplifiers) that produce heat.
- 9) Do not defeat the safety purpose of the polarized or grounding-type plug. A polarized plug has two blades with one wider than the other. A grounding-type plug has two blades and a third grounding prong. The wide blade or the third prong are provided for your safety. If the provided plug does not fit into your outlet, consult an electrician for replacement of the obsolete outlet.
- 10) Protect the power cord from being walked on or pinched particularly at plugs, convenience receptacles and the points where they exit from the apparatus.
- 11) Only use attachments/accessories specified by the manufacturer.
- 12) Use only with the cart, stand, tripod, bracket, or table specified by the manufacturer, or sold with the apparatus. When a cart is used, use caution when moving the cart/apparatus combination to avoid injury from tip-overs.



- 13) Unplug this apparatus during lightning storms or when unused for long periods of time.
- 14) Refer all servicing to qualified service personnel. Servicing is required when the apparatus has been damaged in any way, such as power-supply cord or plug is damaged, liquid has been spilled or objects fallen into the apparatus, the apparatus has been exposed to rain or moisture, does not operate normally, or has been dropped.

CONTENTS

PREFACE	6
FEATURES	6
PRECAUTIONS	7
PLATFORM	8
TRADEMARKS AND REGISTERED TRADEMARKS	9
DOCUMENT CONVENTION	9
MAJOR OPERATING CONTROLS AND THEIR FUNCTIONS	10
Front View	10
Rear View	10
INSTALLATIONS	11
CONNECTIONS	12
Connection between a PC and This Camera (Connection type 1)	12
Using with an Intranet (LAN) (Connection type 2)	13
Using via Internet (Connection type 3-4)	14
SETUP	15
Preparations for the Setup	15
Setup with the Provided "Panasonic IP Setup" Software	16
Network Setup of the PC	18
Using Windows 98 SE	18
Using Windows 2000	20
Using Windows XP (Category View)	22
Network Setup of the Camera	24
Parameters for the "Network setup" Items Depending on the Connection Type	27
Installation of the MPEG-4 Plug-in	29
Basic Settings	30
BROWSING PICTURES	32
Monitoring a Still Picture of a Single Camera	32
Monitoring the Motion Picture of a Single Camera	34
Monitoring Still Pictures of Multiple Cameras	36
Monitoring the Picture of a Camera in a Preset Position	39
Saving the Currently Monitored Picture on the PC	41
DETECTING MOTION IN THE MONITORED AREA	42
Motion Detector Function	42
Action when Motion is Detected	42
Settings of the Actions to be Performed when Motion is Detected	43
Items on the "Alarm" page	45
Setting of the Motion Detection Area	46
Viewing the Picture Stored in the Camera	48
TRANSFERRING PICTURES TO THE SERVER	49
Preparations for Transferring Pictures to the Server	49
Transferring Pictures to the Server at Designated Intervals	51
Transferring Pictures to the Server when Motion is Detected	52
OTHER FUNCTIONS	53
Alarm Connector and AUX Output Connector	53
Customizing the Contents of the Alarm Mail	53

ADVANCED SETTINGS	54
Advanced Settings for "Operation mode"	54
Adjusting the Picture	56
Settings for the Host Authentication	58
Settings for the User Authentication	60
System Settings	62
SNMP Settings	65
USING "HELP"	67
FIRMWARE UPGRADE	67
TROUBLESHOOTING	68
SPECIFICATIONS	73
GLOSSARY OF TERMS	74

PREFACE

This is a camera that can be connected to a network.

You can view camera pictures with the web browser on a personal computer (PC), by connecting this camera to networks such as a LAN or the Internet.

FEATURES

This camera offers you the following features:

- **You can use it with the web browser of a PC.**

You can view camera pictures, set up preferences for the camera and operate the camera with the web browser of a PC just by connecting the camera to a network.

Note: Setting of the network environment is required depending on the PC.

- **You can view still pictures and motion pictures.**

You can view the camera picture as a still picture (JPEG) or a motion picture (MPEG-4). You can display or stop the camera picture with the web browser.

Note: To monitor motion pictures (MPEG-4), it is necessary to install the plug-in provided onto the web browser.

- **You can simultaneously view camera pictures from multiple cameras on a single monitor screen.**

You can display still pictures from up to four cameras on a single monitor screen.

- **You can specify operations in case movement is detected in the area under surveillance.**

When movement is detected in the area under surveillance, you can specify operations such as storing images, sending automatic e-mails, etc.

Do not perform panning, tilting or preset operations after setting the motion detection area.

The detection area will be inaccurate and it may be impossible to detect motion in the area under surveillance.

- **You can set limitations for users.**

By setting user names and passwords in advance, you can limit unregistered users to view camera pictures. You can also specify the operating level for each user, such as limiting the user's authority to operate the camera, to perform the settings, etc.

PRECAUTIONS

- **Refer all work related to the installation of this product to qualified service personnel or system installers.**

- **Do not operate the appliance beyond its specified temperature, humidity, or power source ratings.**

Use the appliance at temperatures within 0 °C - + 40 °C (32 °F - 104 °F) and humidity below 90 %. The input power source for this appliance is 120 V AC 60 Hz.

- **Handle the appliance with care.**

Do not strike or shake, as this may damage the appliance.

- **Do not aim the camera at bright light sources.**

If a bright light, such as a spotlight, is present on the monitor screen, blooming (blurring around areas with excessive brightness) or smearing (appearance of vertical lines above and below a bright object) may occur.

- **Only use the camera indoors.**

Do not install it in places where the camera is exposed to sunlight for long periods of time or near air conditioning equipment. This will cause deformation, discoloration, breakdown or malfunction.

- **Only use the AC adapter provided with this camera to connect to the power source.**

Do not plug it into an outlet also hosting big appliances with high power consumption (such as a copy machine or an air conditioning unit).

- **Do not touch the dome cover directly.**

Dirt on the dome cover may decrease the quality of the picture.

Hold it by its sides when you move the camera.

- **Do not strike or give a strong shock to the camera.**

It may cause damage or allow water to enter the camera.

- **Built-in backup battery**

Before the first use, charge the built-in backup battery by turning on the power for 48 hours or more. If it is not charged enough, in the case where the power goes down, the internal clock may keep bad time or the operative condition may be different to that before the electric power failure.

The built-in battery life is approximately 5 years. Ask the shop where you purchased the camera when replacement of the battery is required.

- **Cleaning**

Turn the power off when cleaning the camera. Otherwise it may cause injuries.

- **Do not use strong or abrasive detergents when cleaning the appliance body.**

Use a dry cloth to clean the appliance when it is dirty.

When the dirt is hard to remove, use a mild detergent and wipe gently.

- **To obtain clear images**

Clean the dome cover approximately once a month to obtain clear images.

- **PC monitor**

Displaying the same image for a long time on the monitor screen may damage the monitor screen. It is recommended that a screen saver be used.

- **Broadband Router**

If the camera is connected via the Internet with a router, use a broadband router with address translation (NAT or IP masquerade). Refer to the operating instructions of the broadband router for the description of the address translation.

- **Restart automatically when an error is detected.**

The camera restarts automatically when an error is detected for any reason. You cannot operate the camera for approximately two minutes after the restart until the initialization has been completed, as happens when the power is turned on for the first time.

- **We recommend that you note down your settings and save them. Power or battery failure may erase the settings you entered.**

PRECAUTIONS

PLATFORM

Setting up and operating this camera is possible with PCs meeting the system requirements described below.

OS:	Microsoft® Windows® 98 Second Edition Microsoft® Windows® 2000 Professional Service Pack 2 Microsoft® Windows® Me Microsoft® Windows® XP Microsoft® Windows NT® Workstation 4.0 Service Pack 6a
Computer:	PC/AT Compatible
CPU:	Pentium® II (300 MHz or higher) for still pictures Pentium® III or faster for motion pictures (MPEG-4)
Memory:	128 MB or more
Monitor:	24-bit True color or better Required to support X VGA (1024 x 768) or higher picture resolution
Network Interface:	10/100Mbps Ethernet® board must be installed
Compatible Network Protocols:	TCP/IP, UDP/IP, HTTP, FTP, SMTP, RTP, DNS, DDNS, DHCP, ARP, BOOTP, NTP and SNMP
Browser:	Internet Explorer 5.5, 5.5SP2, 6.0 Netscape Communicator® 4.73, 4.78 The MPEG-4 plug-in is exclusive to Internet Explorer. It cannot be used for Netscape Communicator.
Adobe® Acrobat® Reader®:	Required to browse the operating instructions on the CD-ROM. If Acrobat® Reader® is not installed on the PC, download the latest version of Acrobat® Reader® from the Adobe Systems Incorporated web site and install it.
CD-ROM Drive:	Required to install the MPEG-4 plug-in software and browse the operating instructions on the CD-ROM.

! Important

- This camera does not support Netscape 6.x currently released.
- This camera does not support the PPPoE network protocol.
- When browsing still pictures and motion pictures with Internet Explorer, select [Tool] – [Internet options] to display "Internet Options", then click the [Security] tab and press the [Custom Level...] button to display the [Security Setting] window. And then, check "Enable" for the following:
 - Script ActiveX controls marked safe for scripting
 - Run ActiveX controls and plug-ins
 - Active scripting
- To perform the settings for the proxy server, select [Tool] – [Internet options] to display "Internet Options", then press the [LAN Settings...] button to display the [Local Area Network (LAN) settings] window. And then, check "Use a proxy server" and "Bypass proxy server for local addresses".
- When using Internet Explorer, select [Tool] – [Internet options] to display "Internet Options". Press the [Settings...] button in the "Temporary Internet files" area on the [General] page to display the [Settings] page. And then, check "Every visit to the page". When using Netscape Communicator 4.7x, select [Edit] – [Preferences] to display the [Preferences] window. Click [Advanced] - [Cache], and check "Every time" for "Document in cache is compared to document on network".
- Cookie is accepted when the camera accesses an HTML document. When using Netscape Communicator, uncheck "Warn me before accepting a cookie". Otherwise, an alert message will appear with every access.

TRADEMARKS AND REGISTERED TRADEMARKS

- Microsoft, Windows, Windows NT and Windows XP are registered trademarks of Microsoft Corporation in the U.S. and/or other countries.
- Netscape, Netscape Navigator, Netscape ONE, the Netscape N and Ship's Wheel logos are registered trademarks of Netscape Communications Corporation in the U.S. and other countries. Other Netscape product names used in this document are also trademarks of Netscape Communications Corporation and may be registered outside the U.S.
- Ethernet is a registered trademark of Xerox Corporation.
- Other names of companies and products contained in these operating instructions may be trademarks or registered trademarks of their respective owners.
- Distributing, copying, disassembling, reverse compiling, reverse engineering, and also exporting in violation of export laws of the Software provided with this product, is expressly prohibited.

DOCUMENT CONVENTION

The abbreviations below are used in this manual.

Windows 98 SE stands for Microsoft® Windows® 98 Second Edition.

Windows 2000 stands for Microsoft® Windows® 2000 Professional Service Pack 2.

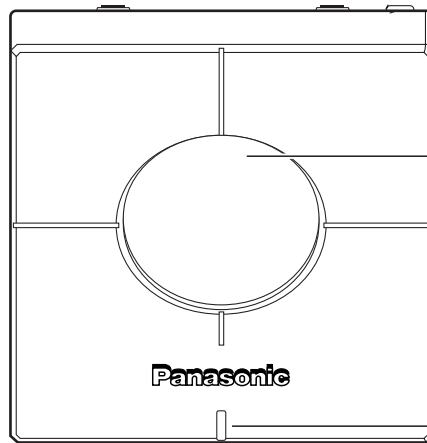
Windows Me stands for Microsoft® Windows® Millennium Edition.

Windows NT stands for Microsoft® Windows NT® Workstation 4.0 Service Pack 6a.

Windows XP stands for Microsoft® Windows® XP.

MAJOR OPERATING CONTROLS AND THEIR FUNCTIONS

Front View



Dome cover

Power LED


You can select ON or OFF for the LED on the "System" page. (Refer to page 63.) If ON is selected, this LED blinks when the camera is being accessed. This LED keeps on blinking for around 2 minutes even after access is terminated.

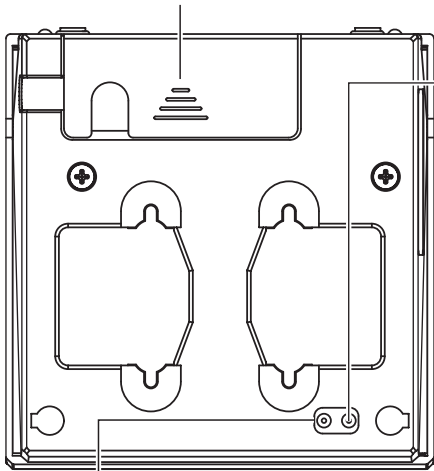
Note:

In MPEG-4 Multicast mode, the LED keeps on blinking.

Rear View

Cord cover

To detach the connector cover, hold down the  part and slide it.



HTML document initialization switch

Plug the AC adapter into an outlet while this switch is pressed.

Keep the switch pressed for five seconds or more, and then release it.

Leave the camera without turning the power off (power is being supplied).

The camera will start panning and tilting automatically.

Initialization of all HTML documents will be completed and all HTML documents will return to the default settings when the camera stops panning and tilting.

It will take around 4 minutes to complete the initialization of all HTML documents.

Setting reset switch

Plug the AC adapter into an outlet while this switch is pressed.

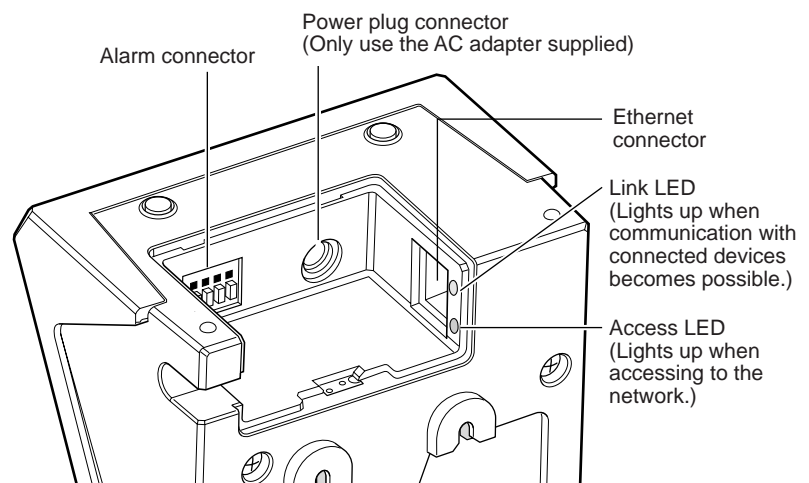
Keep the switch pressed for five seconds or more, and then release it.

Leave the camera without turning the power off (power is being supplied).

The camera will start panning and tilting automatically.

Initialization of all the settings will be completed and all the settings will return to the default settings when the camera stops panning and tilting.

It will take around 3 minutes to complete the initialization of all settings.



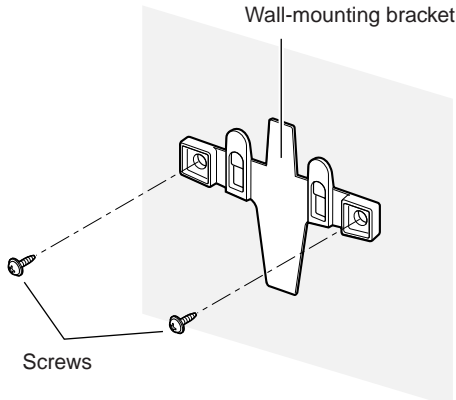
Inside of the cord cover

! Important

Firmly insert the power plug of the AC adapter into the power plug connector of the camera.

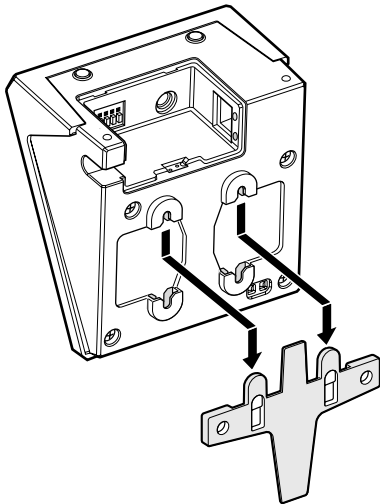
INSTALLATIONS

This is an example of an installation onto a wall.



STEP1

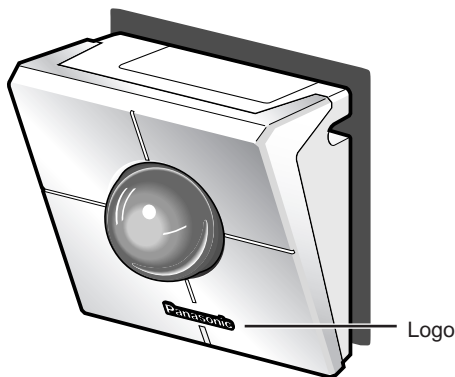
Install the wall-mounting bracket onto the wall using the screws.



STEP2

Install the camera onto the wall-mounting bracket by referring to the illustration shown on the left.

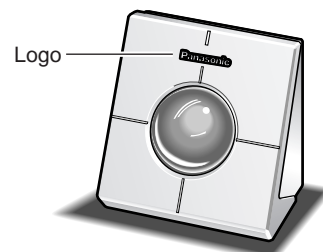
It is possible to install the camera upside down. Install the camera in the upside down position according to your needs.



STEP3

Confirm that the Panasonic logo is in the position shown in the illustration.

If the logo is upside down, rotate the logo.



Notes

- If the camera is placed on a desk, as shown in the illustration on the right, select "Desk top" for "Camera position" on the "Basic setup" page.
- Connect the AC adapter and the Ethernet cable (category 5) to the camera. After the connection, slide the cord cover to attach it. To prevent the cord cover from detaching, tighten the two provided cord cover fixing screws.

CONNECTIONS

Before starting the connections, confirm which type of connection meets your needs.

The following explanations are provided for each connection type.

Prepare the required hardware and cables for your connection type before starting the connections.

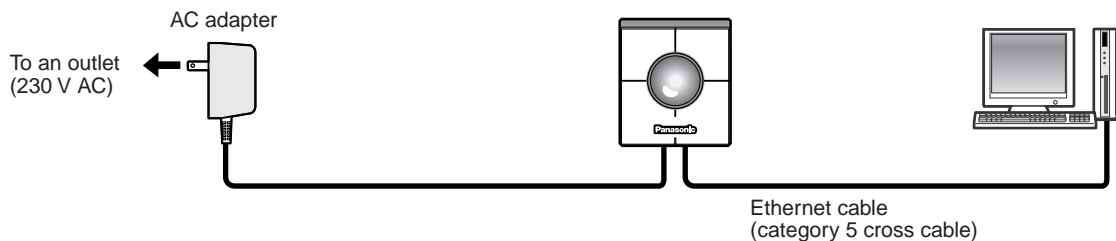
! Important

Before starting the connections, confirm that all the power switches of the camera, the ADSL/cable modem, the switching hub and the PC are turned off, and that all power plugs are not connected to the outlet.

Connection between a PC and This Camera (Connection type 1)

Connect the camera and the PC directly using an Ethernet cable when browsing the camera pictures or performing the network settings of the camera.

< Connection example >



< Required cable >

Ethernet cable (category 5 cross cable)

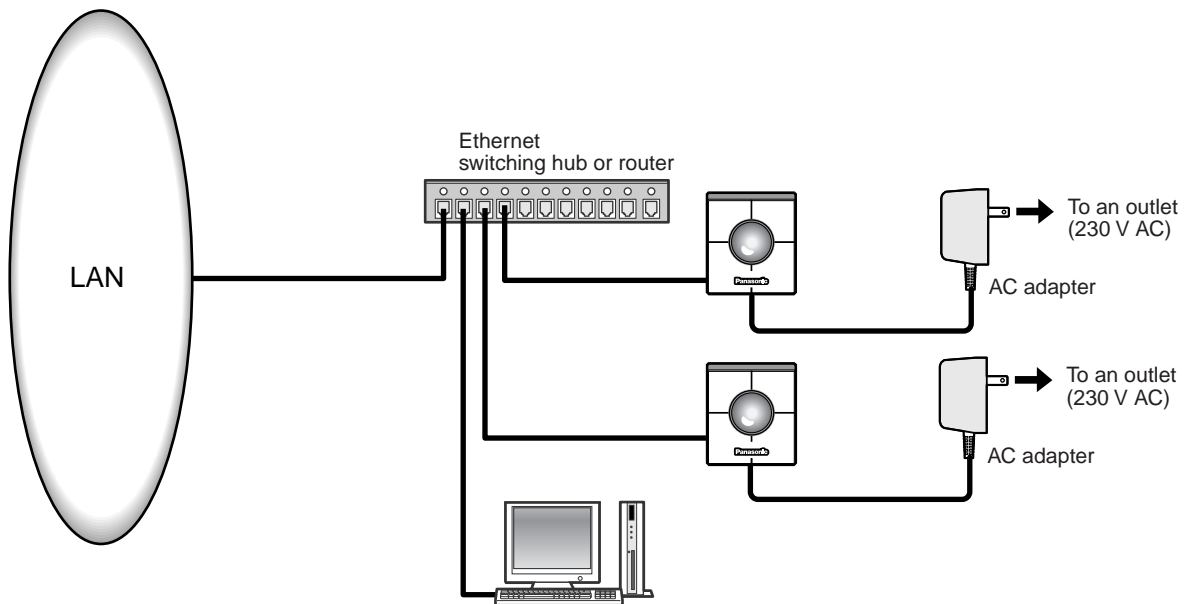
! Important

- All cameras connected to the network must use their own exclusive AC adapter.
- Use only the specified Ethernet cable, category 5 cross cable.

Using with an Intranet (LAN) (Connection type 2)

Connect the camera to an intranet (LAN) using an Ethernet switching hub or router when browsing camera pictures of a camera installed in the same LAN (the intranet of a company or home).

< Connection example >



< Required hardware >

Ethernet switching hub or router

< Required cable >

Ethernet cable (category 5 straight cable)

! Important

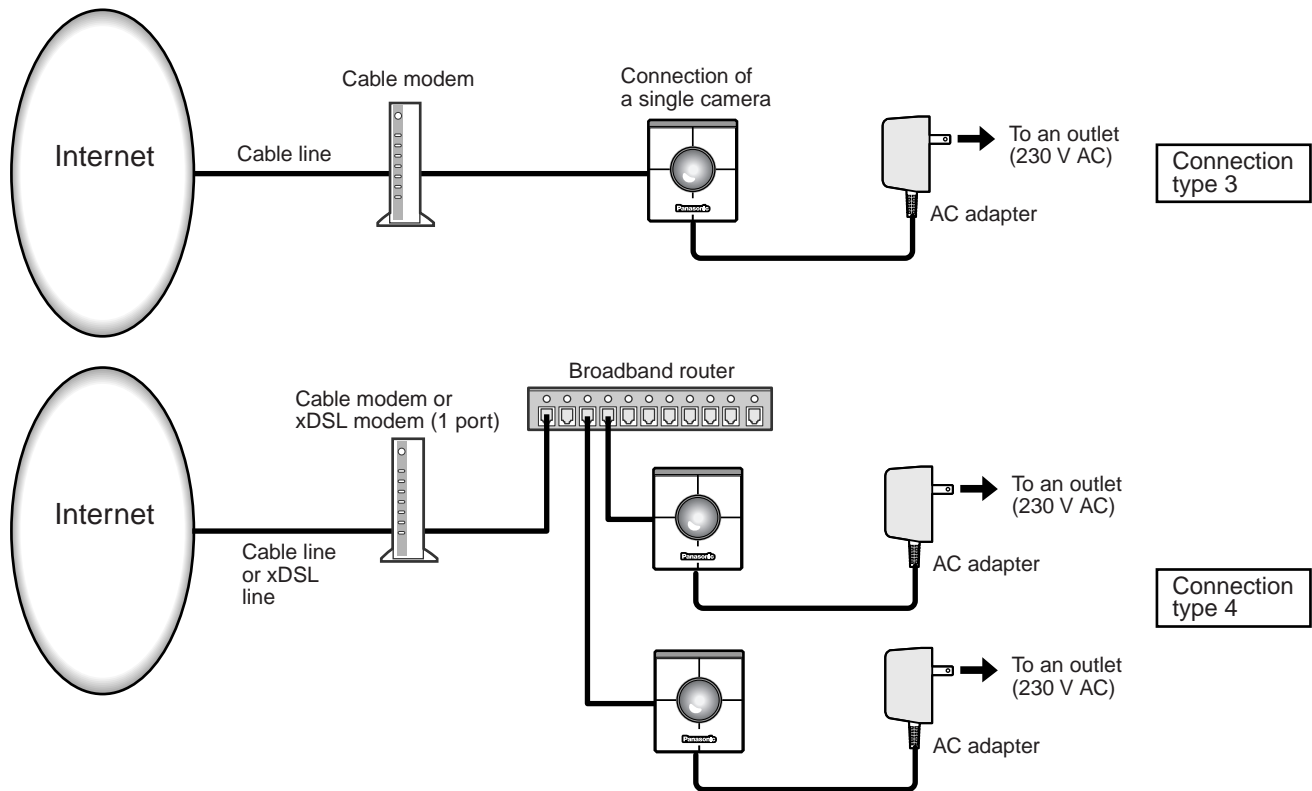
- Use an Ethernet switching hub or router suitable for 10Base-T/100Base-TX.
- Install also a LAN card suitable for 10Base-T/100Base-TX on the PC.
- All cameras connected to the network must use their own exclusive AC adapter.

CONNECTIONS

Using via the Internet (Connection type 3-4)

Connecting the camera to the Internet using an xDSL modem or a cable modem.

< Connection example >



< Required hardware >

- Cable modem or xDSL modem
- Broadband router

< Required cable >

Ethernet cable (category 5 straight cable)

! Important

- When the camera is connected using connection type 3 or 4, obtain the global IP address from the Internet service provider. Perform the settings of the camera by connecting the camera and the PC directly. (Refer to the next page.)
- When the camera is connected using connection type 3, it is required to assign the global IP address to the camera. When the camera is connected using connection type 4, it is required to assign the global IP address to the broadband router and to set the address translation. (Refer to page 26.)
- Use an Ethernet switching hub or a broadband router suitable for 10Base-T/100Base-TX. Install also a LAN card suitable for 10Base-T/100Base-TX on the PC.
- All cameras connected to the network must use their own exclusive AC adapter.
- To use multiple cameras, it is necessary to set up the router and assign each camera with an HTTP port number. For further information about the assignment of the HTTP port number to the camera, refer to page 28. For further information about the setup of the router, refer to the operating instructions of the router.

SETUP

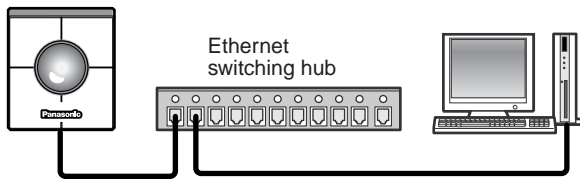
After completing the connections, it is necessary to set up the network of the PC and the camera. To operate the camera connected in a network such as a LAN or the Internet, it is necessary to set up the network. Use the provided "Panasonic IP Setup" software to set up the network of the camera. (Refer to the next page). If the setup with the provided software fails, set up the PC and the camera separately. For further information, refer to pages 18 - 28.

Preparations for the Setup

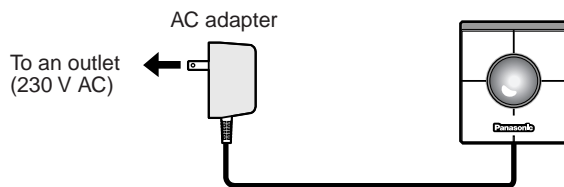
Prepare the following items before starting the network setup.



Ethernet cable
(Category 5 cross cable)



Ethernet cable
(Category 5 straight cable)



STEP1

Connect the camera and the PC in either of the ways shown on the left.

! Important

Use a category 5 cross cable if the camera and the PC are connected directly.

STEP2

Turn on the power of the camera after the connection is made. The power is supplied to the camera by connecting the AC adapter to an outlet. After the power is supplied, it will take around 2 minutes before the camera can be operated.

Notes

- When the power is supplied, the power LED lights up for around 80 seconds and then blinks for around 20 seconds. Then the camera performs one complete panning and tilting operation.
- Confirm that the power LED and the link LED are lit after the power is supplied.
If the power LED is not lit:
Confirm that the AC adapter is firmly plugged into both the camera and the outlet.
If the link LED is not lit:
Confirm that the Ethernet cable is inserted firmly. Confirm also that the cable type (straight / cross) corresponds to the connection type.

SETUP

Setup with the Provided "Panasonic IP Setup" Software

Set up the network of the camera by using the "Panasonic IP Setup" software included on the CD-ROM provided with the camera.

STEP1

When the provided CD-ROM is inserted into the CD-ROM drive of the PC, the launcher software starts up and the readme file is displayed.

Items included in the software

- SETUP
- Instructions
- MPEG-4 Installation

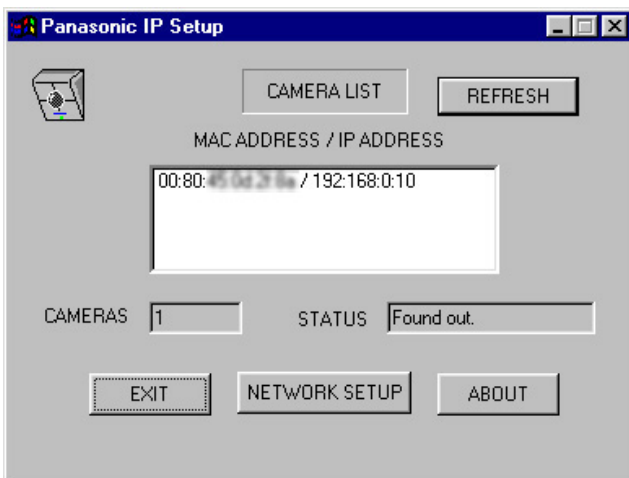
After reading the readme file, click the [SETUP] button.

Notes

- Double click "launch.exe" on the provided CD-ROM if the launcher software does not start up automatically.
- If a firewall (including software) exists, allow access to all UDP ports. Otherwise, it is impossible to use the "Panasonic IP Setup" software.

Screenshot 1

The "Panasonic IP Setup" starts up.
The MAC address and the IP address of the connected camera will be displayed. (Click the [REFRESH] button if they are not displayed.)



STEP2

Click the MAC address/IP address of the camera to be set up.

STEP3

Click the [NETWORK SETUP] button.

Notes

- When two or more cameras are connected, the MAC addresses and the IP addresses of all the connected cameras will be displayed.
- The "Panasonic IP Setup" software can recognize only those cameras in the same subnet.
- The updated MAC addresses and IP addresses of all the connected cameras that are in the same subnet will be displayed by pressing the [REFRESH] button.

Screenshot 2

The setup window appears.

Panasonic IP Setup

IP Address: 192 . 168 . 0 . 10

Subnet Mask: 255 . 255 . 255 . 0

Default Gateway: 192 . 168 . 0 . 1

HTTP Port: 80

DHCP: Enable Disable

DNS: Enable Disable

Primary DNS Server address: 0 . 0 . 0 . 0

Secondary DNS Server address: 0 . 0 . 0 . 0

RESET SET Cancel

STEP4

Set parameters for each item.

"IP Address"

"Subnet Mask"

"Default Gateway"

"HTTP Port"

Enter parameters depending on your environment.

For further information about the parameters, refer to pages 27-28.

"DHCP"

"DNS"

Click the [Enable] radio button when using the DHCP and the DNS.

When using the DNS function, enter the "Primary DNS Server address" and the "Secondary DNS Server address".

Notes

- If DHCP is enabled although there is no DHCP server in the network, check [Disable] for DHCP in the "Panasonic IP Setup" window.
- If DHCP is enabled, and the DHCP server has not assigned an IP address yet, "0.0.0.0" is displayed for the IP address. The IP address of the camera will be displayed after the DHCP server assigns one to the camera.

STEP5

Click the [SET] button after completing the setting.

! Important

It takes around 20 seconds to complete the settings of the camera after the [SET] button is pressed. If the AC adapter or the Ethernet cable is detached before the settings are completed, the settings may not be performed correctly.

SETUP

Network Setup of the PC

To set up the network of the PC, first change the TCP/IP settings of the PC to match them to the default settings of the camera. The following are the default network settings of the camera.

- IP address: 192.168.0.10
- Subnet mask: 255.255.255.0
- Default gateway: 192.168.0.1

To access the camera, the IP address of the PC should be "192.168.0.XXX" (where XXX should be a number from 2 to 254 except 1 and 10). In case the IP address of the camera is set with the "Panasonic IP Setup" software, perform the network setting of the PC according to the network environment.

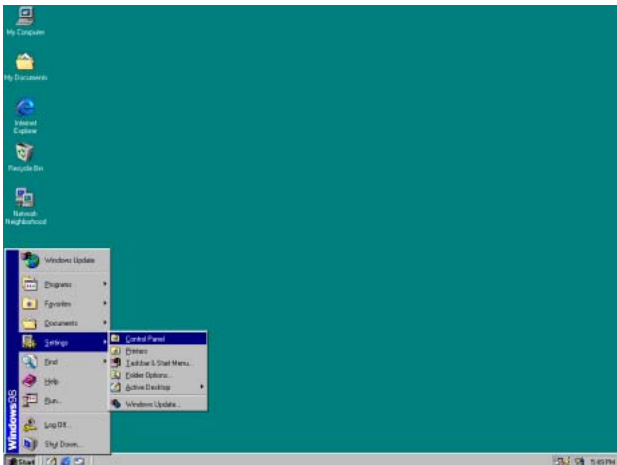
The settings differ depending on which OS is installed on the PC. Confirm which OS is installed on your PC, and proceed with the settings corresponding to your OS.

Using Windows 98 SE

The following procedures are examples when using Windows 98 SE. You can proceed in the same way when using Windows Me.

Screenshot 1

Begin the setup when the PC is in the same condition as just after the startup.

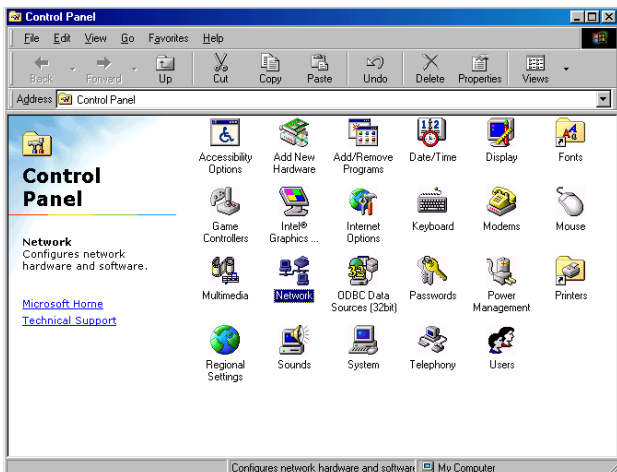


STEP1

Select "Control Panel" ([Start] - [Settings] - [Control Panel]).

Screenshot 2

The "Control Panel" window appears.

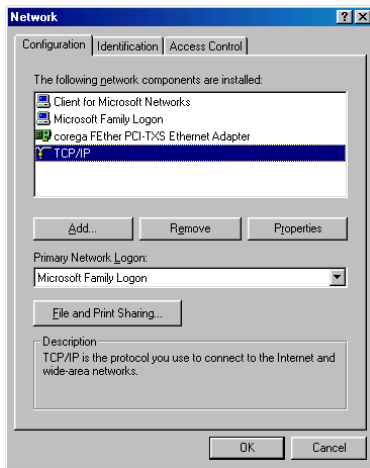


STEP2

Click once to select the [Network] icon.

Screenshot 3

The "Network" window appears.



STEP3

Click the [Configuration] tab.

STEP4

Click to select the TCP/IP protocol of the currently used network card.

STEP5

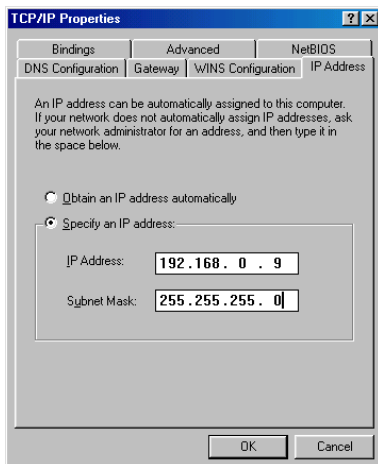
Click the [Properties] button.

Note

If the "TCP/IP" item is not displayed, refer to the operating instructions of the OS and follow the procedures to install the TCP/IP.

Screenshot 4

The "TCP/IP Properties" window appears.



STEP6

Click the [IP Address] tab.

STEP7

Click the "Specify an IP address" radio button.

STEP8

Enter the IP address and the subnet mask as follows.

- IP Address: 192.168.0.9
- Subnet Mask: 255.255.255.0

STEP9

Click the [OK] button, and the window closes.

STEP10

Restart the PC to make the IP address valid.

SETUP

Using Windows 2000

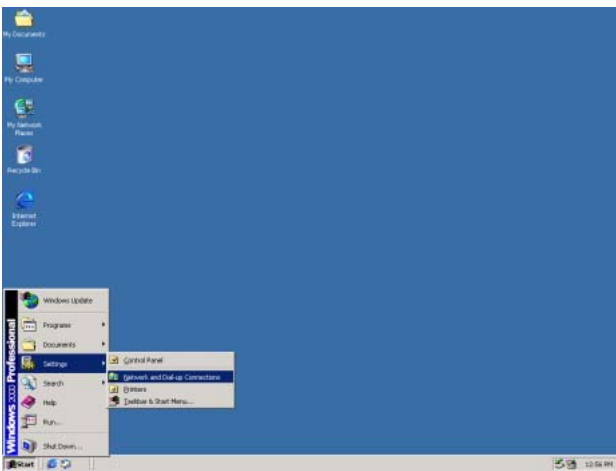
The following procedures are examples when using Windows 2000. You can proceed in the same way when using Windows NT.

! Important

Log in as one of the administrators before beginning the setup.

Screenshot 1

Begin the setup when the PC is in the same condition as just after the startup.

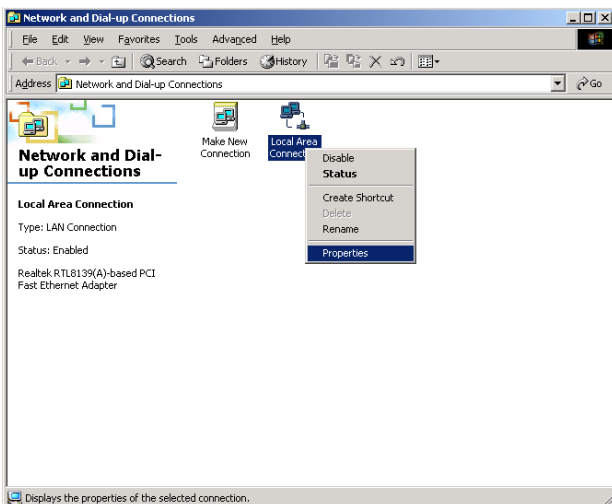


STEP1

Select "Network and Dial-up Connections" ([Start] - [Settings] - [Network and Dial-up Connections]).

Screenshot 2

The "Network and Dial-up Connections" window appears.

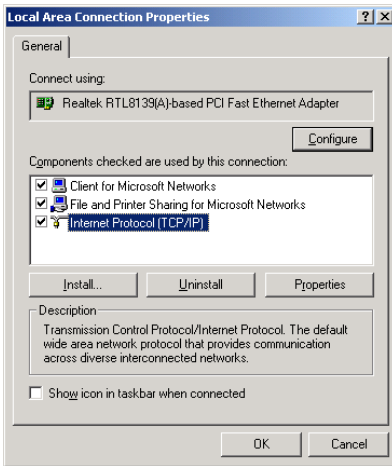


STEP2

Click the right mouse button on the "Local Area Connection" icon, and select "Properties" from the pop-up menu.

Screenshot 3

The "Local Area Connection Properties" window appears.



STEP3

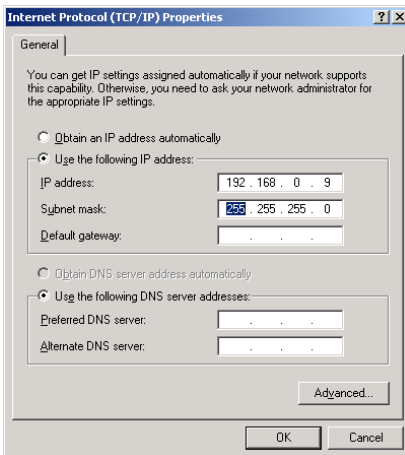
Click to select "Internet Protocol (TCP/IP)", and then click the [Properties] button.

Note

If the "Internet Protocol (TCP/IP)" item is not displayed, refer to the operating instructions of the OS and follow the procedures to install the TCP/IP.

Screenshot 4

The "Internet Protocol (TCP/IP) Properties" window appears.



STEP4

Click the "Use the following IP address" radio button and enter the IP address and the subnet mask as follows.

- IP address: 192.168.0.9
- Subnet mask: 255.255.255.0

STEP5

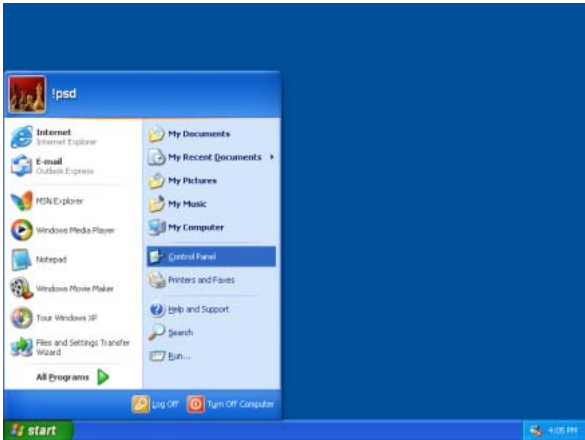
Click the [OK] button, and the window closes.

SETUP

Using Windows XP (Category View)

Screenshot 1

Begin the setup when the PC is in the same condition as just after the startup.

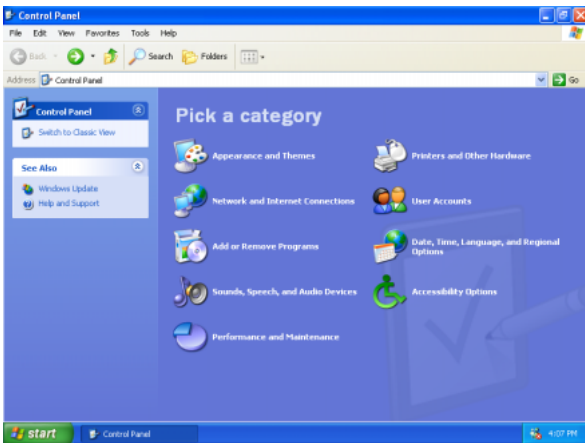


STEP1

Select "Control Panel" ([Start] - [Control Panel]).

Screenshot 2

The "Control Panel" window appears.

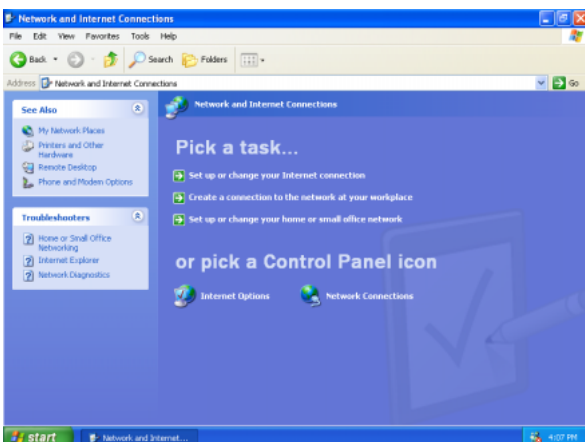


STEP2

Double click the "Network and Internet Connections" icon.

Screenshot 3

The "Network and Internet Connections" window appears.

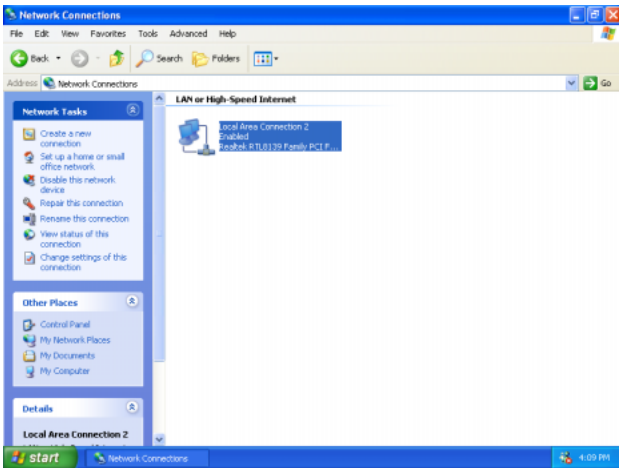


STEP3

Double click the "Network Connections" icon.

Screenshot 4

The "Network Connections" window appears.

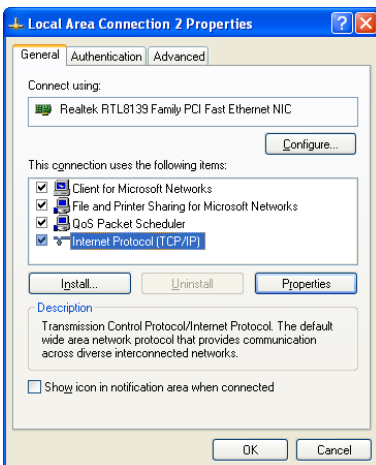


STEP4

Click to select "Local Area Connection", and then click "Change settings of this connection" in the "Network Tasks" menu.

Screenshot 5

The "Local Area Connection Properties" window appears.



STEP5

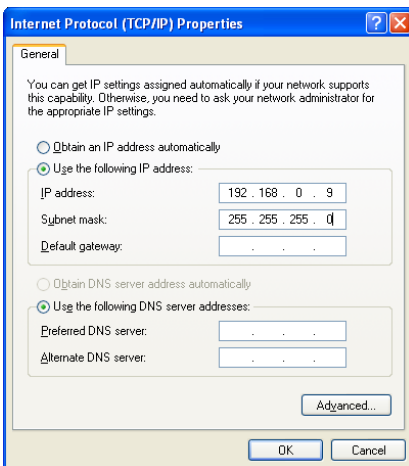
Click to select "Internet Protocol (TCP/IP)", and then click the [Properties] button.

Note

If the "Internet Protocol (TCP/IP)" item is not displayed, refer to the operating instructions of the OS and follow the procedures to install the TCP/IP.

Screenshot 6

The "Internet Protocol (TCP/IP) Properties" window appears.



STEP6

Click the "Use the following IP address" radio button and enter the IP address and the subnet mask as follows.

- IP address: 192.168.0.9
- Subnet mask: 255.255.255.0

STEP7

Click the [OK] button, and the window closes.

SETUP

Network Setup of the Camera

After completing the network setup of the PC, begin the network setup of the camera.

If multiple cameras are connected, it is required to set up each camera individually.

The following information is necessary for the network setup of the cameras.

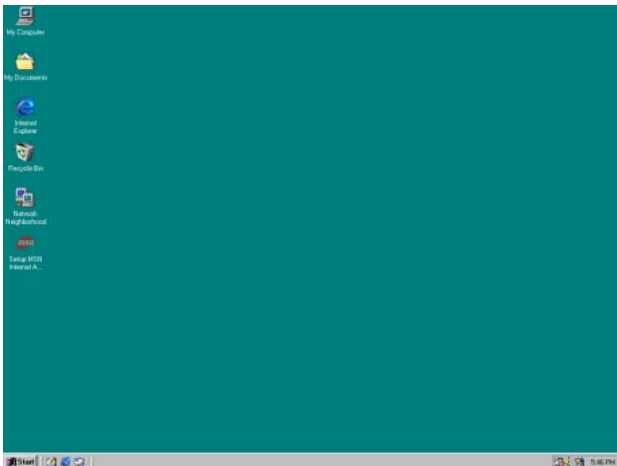
If you do not have the following information, refer to your network administrator or your Internet service provider.

For further information about the terms, refer to page 74-75.

- IP address
- Subnet mask
- Port number
- Default gateway (when using a gateway server or a router)
- Primary and secondary DNS server address (when using DNS)

Screenshot 1

Begin the setup when the PC is in the same condition as just after the startup.



Screenshot 2

The browser starts up. The web page set as the home page in your browser appears.



(The picture is the page of the Panasonic web site.)

STEP1

Start up Internet Explorer on your PC.

STEP2

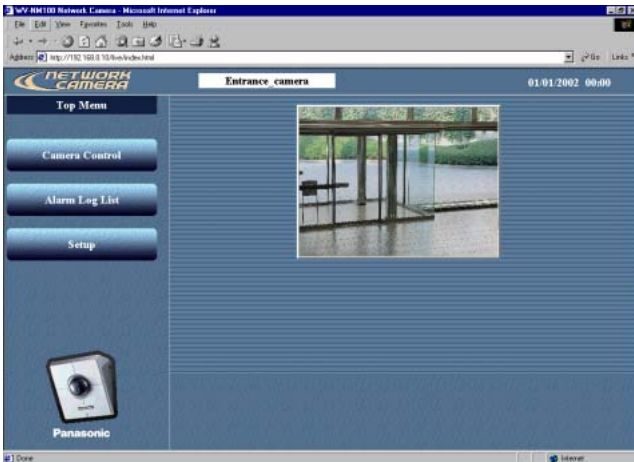
Enter the IP address assigned by the "Panasonic IP Setup" software in the "Address" box of Internet Explorer. (If the IP address has not been assigned yet, enter the default IP address "192.168.0.10".)

You can confirm the assigned IP address by pressing the [REFRESH] button in the "Panasonic IP Setup" window.

If the broadband router is set to use the address translation, enter [IP address + : (colon) + port number] in the "Address" box, and press the enter key.

Screenshot 3

The "Top Menu" page of the camera setup appears.



STEP3

Click the [Setup] button.

! Important

The login window will appear when you press one of the buttons ([Camera Control], [Alarm Log List], [Setup]) on the "Top Menu" page for the first time. The default settings for user name and password are as follows.

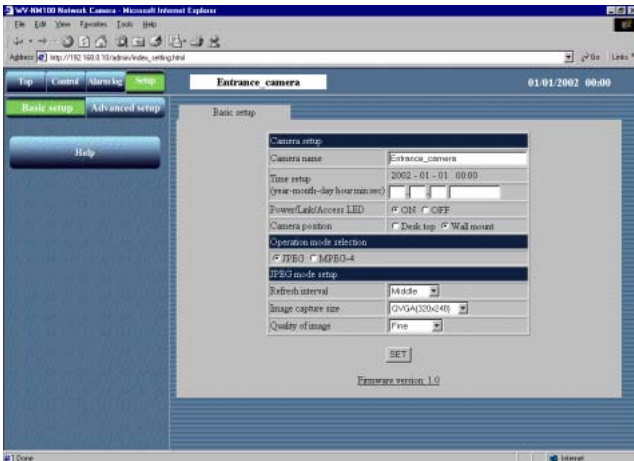
User name: admin

Password: password

Change the default password for security.

Screenshot 4

The "Basic setup" page appears.

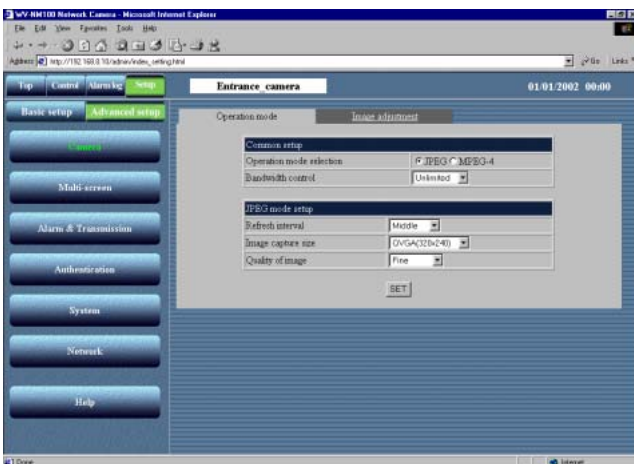


STEP4

Click the [Advanced setup] button.

Screenshot 5

The "Operation mode" page of "Advanced setup" appears.



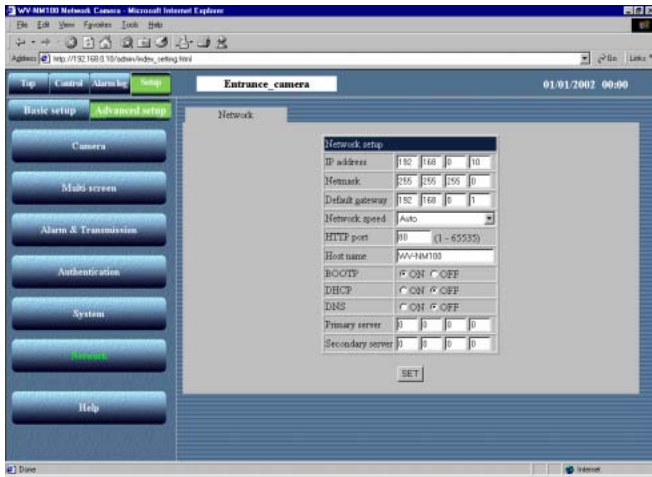
STEP5

Click the [Network] button.

SETUP

Screenshot 6

The "Network" page appears.



STEP6

Set parameters for each item in the "Network" page.

The parameters differ depending on the connection type (refer to pages 12-14).

For further information, refer to the next page.

STEP7

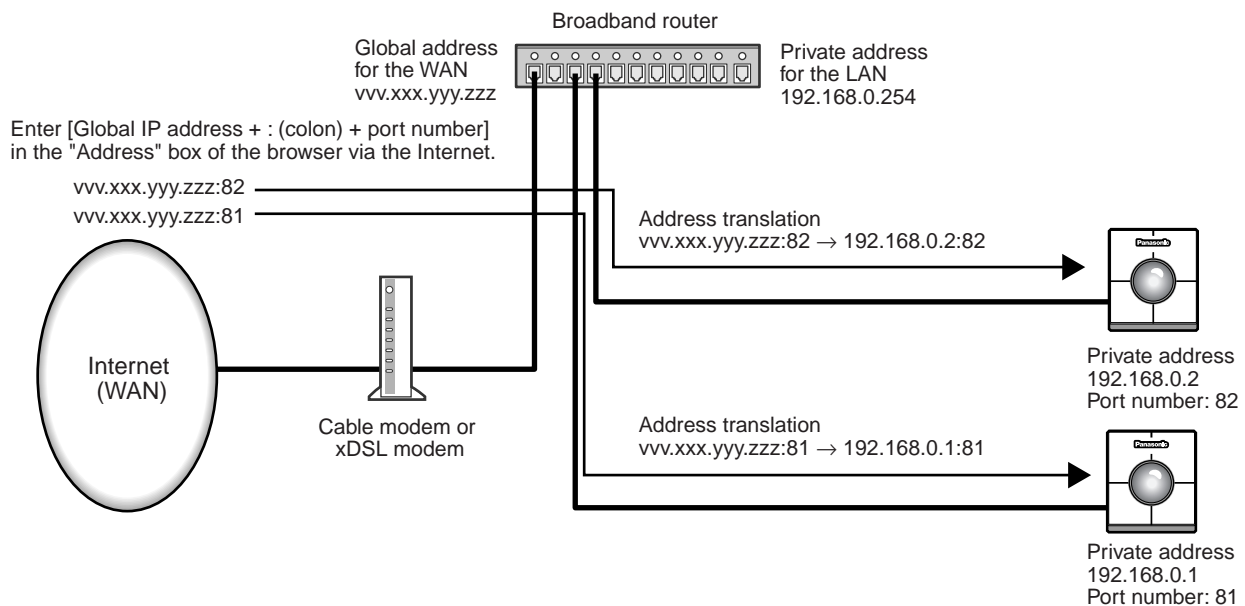
Click the [SET] button after completing the setup.

! Important

After you click the [SET] button, the "Command Executing" message appears. (This message will appear even when you click the [SET] button in other windows.) Avoid doing any operation while the message is displayed.

Note

- About the address translation function (Static IP masquerade, Network Address Translation (NAT))
The address translation function changes a global IP address to a private IP address, and "Static IP masquerade" and "Network Address Translation (NAT)" have this function. This function is to be set in a router.
To browse camera pictures via the Internet by connecting the camera to a broadband router, it is necessary to assign a respective port number for each camera and address translation by using the address translation function. For further information, refer to the operating instructions of the broadband router.



Parameters for the "Network setup" Items Depending on the Connection Type

Item	Connection type	Description of the parameter
IP address	Connection type 1	Enter "xxx.yyy.zzz.nnn" for the IP address (where "xxx.yyy.zzz" should be the same numbers assigned to the PC, and "nnn" should be a number from 2 to 254 except the same IP address already assigned to the PC and any other cameras).
	Connection type 2	Set the IP address designated by your network administrator. However, the setting is not required if the DHCP is used in an intranet.
	Connection type 3 ^{*1}	Set the IP address designated by your Internet service provider.
	Connection type 4 ^{*2}	If the broadband router uses the DHCP: No setting required If the broadband router does not use the DHCP: Assignment of a private IP address is required. However, the IP addresses already assigned to the PC and other cameras are not available. For further information, refer to the operating instructions of the broadband router.
Netmask	Connection type 1	Use the default setting "255.255.255.0" for the subnet mask.
	Connection type 2	Set the subnet mask designated by your network administrator. However, the setting is not required if the DHCP is used in an intranet.
	Connection type 3	Set the subnet mask designated by your Internet service provider.
	Connection type 4	If the broadband router uses the DHCP: No setting required If the broadband router does not use the DHCP: Setting of the subnet mask is required. For further information, refer to the operating instructions of the broadband router.
Default gateway	Connection type 1	If the IP address is set for "xxx.yyy.zzz.nnn", enter "xxx.yyy.zzz.1" for the default gateway.
	Connection type 2	Set the IP address of the default gateway designated by your network administrator. However, the setting is not required if the DHCP is used in an intranet.
	Connection type 3	Set the default gateway designated by your Internet service provider.
	Connection type 4	If the broadband router uses the DHCP: No setting required If the broadband router does not use the DHCP: Assignment of an IP address to the router is required. For further information, refer to the operating instructions of the broadband router.

^{*1} If the camera is accessed via the Internet, set the global IP address.

^{*2} If the camera is accessed via the Internet, assign the global IP address to the broadband router, and set the address translation function to use. (Refer to page 26.)

SETUP

Network speed	Common to all connection types	Set the network speed. Use the default setting "auto" for the network speed. Selectable parameters: auto (default setting), 100 Mbps (full duplex), 100 Mbps (half duplex), 10 Mbps (full duplex), 10 Mbps (half duplex)
HTTP port	Connection type 1, 2 and 3	Use the default setting "80" for the HTTP port.
	Connection type 4	If multiple cameras are connected, it is required to set up each camera individually. However, the port numbers already assigned to other hardware are not available. The following port numbers are also not available because this camera already uses them. Port number: 20, 21, 23, 25, 42, 67, 68, 69, 105, 110, 123, 161, 162, 546, 547, 5002
Host name	Connection type 1	No setting required
	Connection type 2	Refer to your network administrator and set the designated host name if required.
	Connection type 3 and 4	Refer to your Internet service provider and set the designated host name if required.
BOOTP	Connection type 1 and 2	Set to ON when using the "Panasonic IP Setup" software.
	Connection type 3 and 4	No setting required
DHCP	Connection type 1	Set to OFF.
	Connection type 2	Set to ON if the intranet uses the DHCP.
	Connection type 3	Set to OFF.
	Connection type 4	Set to ON if the broadband router uses the DHCP.
DNS	Connection type 1	Set to OFF.
	Connection type 2, 3 and 4	Set to ON when using the DNS.
Primary server	Connection type 1	No setting required
Secondary server	Connection type 2, 3 and 4	Set the IP address of the DNS server when using the DNS. Refer to your Internet service provider for the IP address of the DNS server. Primary and secondary IP addresses can be set for the DNS.

Installation of the MPEG-4 Plug-in

Installation of the plug-in is required to browse motion pictures.

Insert the provided CD-ROM into the CD-ROM drive of the PC. The launcher software starts up automatically. Click the [MPEG-4 Installation] button.

After the installer starts up, follow the instructions of the wizard.

Entering a password will be required to install the MPEG-4 plug-in. Enter the password on the provided label.

! Important

- The MPEG-4 plug-in is exclusively designed for Internet Explorer. This plug-in does not work with other browsers.
- The MPEG-4 plug-in does not work on a Windows NT computer.
- Login as administrator when installing the MPEG-4 plug-in on a Windows 2000 computer. If your PC has Windows XP installed, login as the administrator of the PC.
- Set the monitor to True Color (24-bit color) or more.
- If a firewall (including software) exists, allow access to all UDP ports. Otherwise, it is impossible to browse motion pictures.

Note

If you need to uninstall the plug-in, follow the steps below.

1. Open the "Control Panel" ([Start] - [Setting] - [Control Panel]).
2. Double click the "Add or Remove Programs" icon.
3. Select "Web Video" and press the [Change / Remove] button.
4. Follow the instructions of the wizard to uninstall the plug-in.

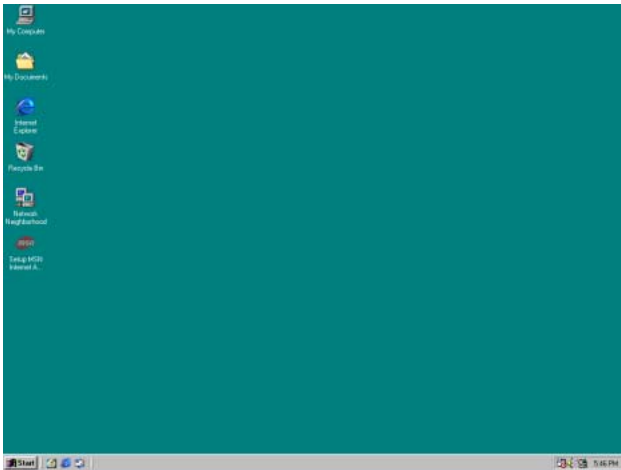
SETUP

Basic Settings

After completing the network setup of the PC and the camera, begin the basic settings of the camera. The basic settings are the minimum settings required to operate the camera, such as date setting and setting of "Operation mode".

Screenshot 1

Begin the setup when the PC is in the same condition as just after the startup.



Screenshot 2

The browser starts up. The web page set as the home page in your browser appears.



(The picture is the page of the Panasonic web site.)

STEP1

Start up Internet Explorer on your PC.

STEP2

Enter the IP address assigned by the "Panasonic IP Setup" software in the "Address" box of Internet Explorer. (If the IP address has not been assigned yet, enter the default IP address "192.168.0.10".)

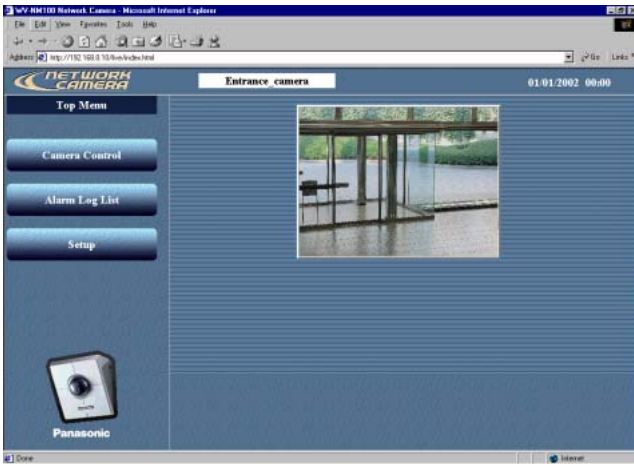
You can confirm the assigned IP address by pressing the [REFRESH] button in the "Panasonic IP Setup" window.

If the broadband router is set to use the address translation, enter [IP address + : (colon) + port number] in the "Address" box, and press the enter key.

Refer to page 17 about the IP address setting.

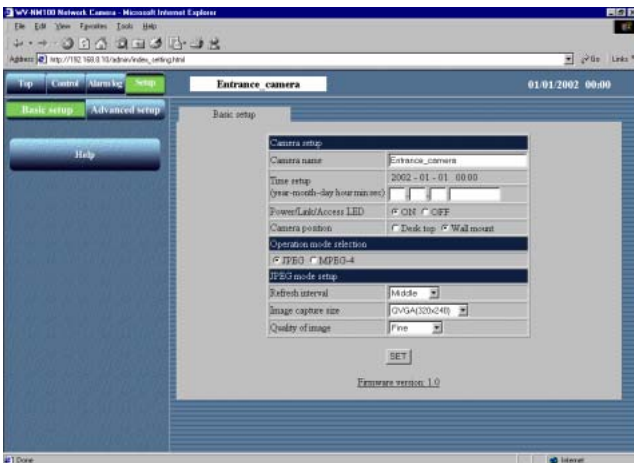
Screenshot 3

The "Top Menu" page appears.



Screenshot 4

The "Basic setup" page appears.



! Important

The time on the browser will be displayed as hours and minutes (00:00), though you can set hours, minutes and seconds in "Time setup".

STEP3

Click the [Setup] button.

! Important

The login window will appear when you press one of the buttons ([Camera Control], [Alarm Log List], [Setup]) on the "Top Menu" page for the first time. The default settings for user name and password are as follows.

User name: admin

Password: password

Change the default password for security.

STEP4

Set up the items on the "Basic setup" page.

This explanation is only for "Camera setup".

"Camera name"

Enter a name for the camera. The entered camera name will be displayed when the reload button of the browser is pressed or when the browser starts up the next time.

Characters for "Camera name": Up to 32 characters

"Time setup (year-month-day hour:min:sec)"

Set the date and the time.

Year: Enter 4 digits.

Month and day: Enter 2 digits each.

Hour, minute and second:

Enter 2 digits each, and divide by colon (:).

"Power/Link/Access LED"

Click the "ON" radio button to use the LED as status display.

Click the "OFF" radio button to turn off the LED all the time.

"Camera position"

Select "Desk top" or "Wall mount" according to where the camera is installed.

STEP5

Click the [SET] button after completing the setting.

BROWSING PICTURES

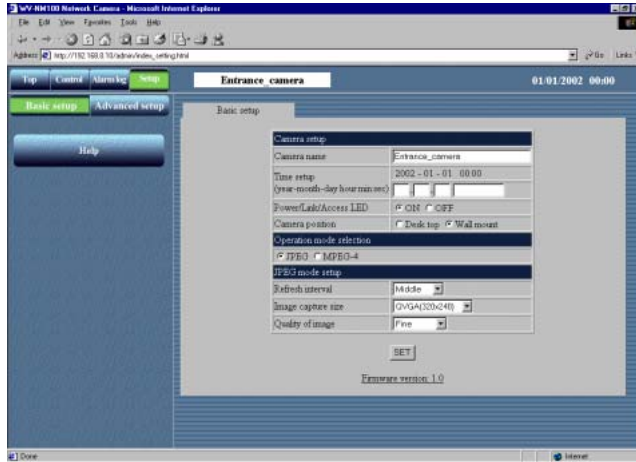
If the setup has been completed, you can browse through the pictures on the camera. The pictures of the camera can be displayed as still pictures or motion pictures. Displaying multiple pictures of multiple cameras on a screen is also possible. To display multiple pictures of multiple cameras on a screen, refer to page 36.

Monitoring a Still Picture of a Single Camera

Set as follows to monitor a still picture (JPEG) of a single camera.

Preparations

The setting for still pictures can be made in the "Basic setup" page. Start up the browser and display the "Basic setup" page of the desired camera. Refer to page 24 and 25 to display the "Basic setup" page.



STEP1

Click the "JPEG" radio button for "Operation mode selection".

STEP2

Begin the settings for JPEG.

"JPEG mode setup"

Set the following items for JPEG.

"Refresh interval"

Select a refresh interval from the following.

Fast / Middle / Slow / Very Slow

"Image capture size"

Select an image capture size from the following. VGA (640 x 480) / QVGA (320 x 240) / QQVGA (160 x 120)

"Quality of image"

Select a quality of the image from the following. Super Fine / Fine / Normal / Low

STEP3

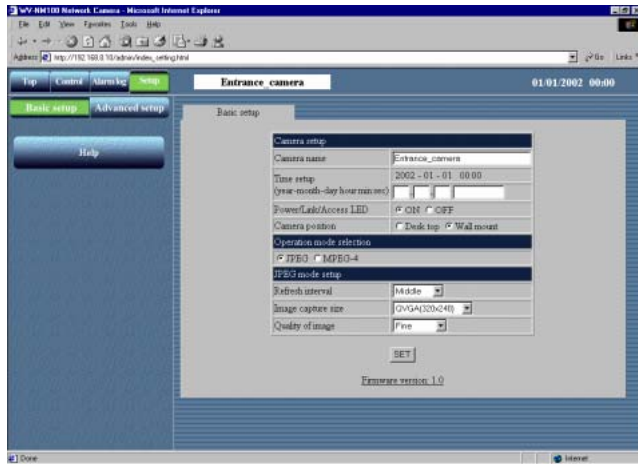
Click the [SET] button after completing the settings.

How to operate

If the preparations have been completed, you can begin the operation from the "Basic setup" page.

Screenshot 1

Begin the operation from the "Basic setup" page.



STEP1

Click the "Control" button.

Screenshot 2

The "Control" page appears and the still picture of the camera is displayed. Operation buttons are displayed below the still picture.



STEP2

Operate the camera and adjust the picture.

Panning and tilting

Click the arrow buttons (up / down / right / left) to adjust the horizontal and vertical position.

The center of the box surrounded by the arrow buttons (the point where the horizontal line and the vertical line cross) is the current position of the camera.

If you click inside the box surrounded by the arrow buttons, you can pan and tilt the camera wider than by clicking the arrow buttons.

Image capture size

Click one of the picture resolution buttons (VGA (640 x 480) / QVGA (320 x 240) / QQVGA (160 x 120)) to display the picture with the desired resolution.

Adjustment of the brightness of the picture

Click the buttons to adjust the brightness of the picture. The left end button (–) is the darkest and the right end button (+) is the brightest. The green button is the currently selected level.

Image size

Click one of the buttons (x1.0 / x1.5 / x2.0) to select the desired image size.

When the picture is magnified, the quality of the picture may be decreased.

AUX

Click one of the buttons (High/Low) to set the status of the AUX output connector. (Refer to p. 53 for details.)

One time pan

You can monitor the picture by panning the camera one time to the left and right.

Note

- If the preparations have been completed, start up the browser and display the "Top Menu" page of the desired camera. The camera picture appears on the "Top Menu" page.
- Several pictures shot during the panning/tilting may not be displayed when "Refresh interval" is set to "Very Slow".

BROWSING PICTURES

Monitoring the Motion Picture of a Single Camera

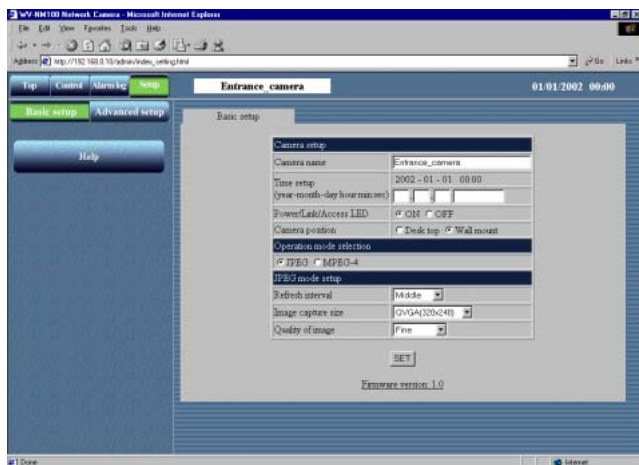
Set as follows to monitor the motion picture (MPEG-4) of a single camera.

! Important

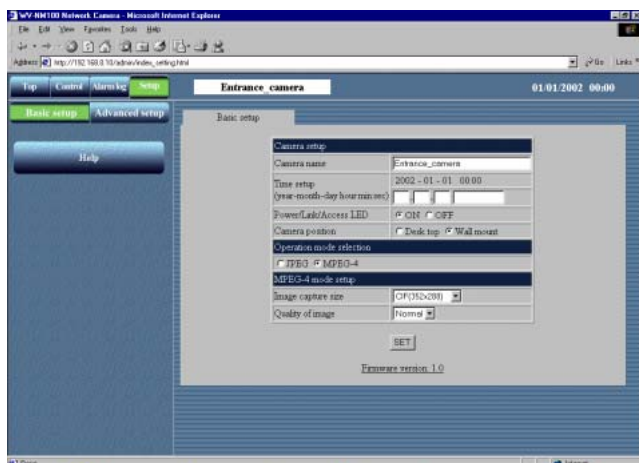
- To monitor the motion picture of a camera, installation of the plug-in is required. For further information, refer to page 29.
- You may have problems browsing motion pictures depending on the bandwidth of the network to which the camera is connected. In this case, perform the setting of "Max bit rate (per 1 client)" on the "Operation mode" page of "Advanced setup". For further information, refer to page 55.

Preparations

The setting for motion pictures can be made in the "Basic setup" page. Start up the browser and display the "Basic setup" page of the desired camera. Refer to page 24 and 25 to display the "Basic setup" page.



(When "JPEG" is selected)



(When "MPEG-4" is selected)

STEP1

Begin the setting of the motion picture in "MPEG-4 mode setup". Click the "MPEG-4" radio button for "Operation mode selection". The parameters for MPEG-4 setting automatically appear.

STEP2

Set the following items for MPEG-4.
"Image capture size"
Select an image capture size from the following.
CIF (352 x 288) / QCIF (176 x 144)
"Quality of image"
Select a quality of the image from the following.
Fine / Normal / Low

STEP3

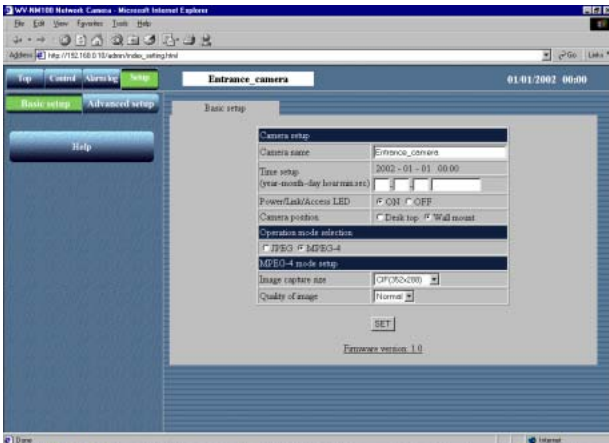
Click the [SET] button after completing the setting.

How to Operate

If the preparations have been completed, you can begin the operation from the "Basic setup" page.

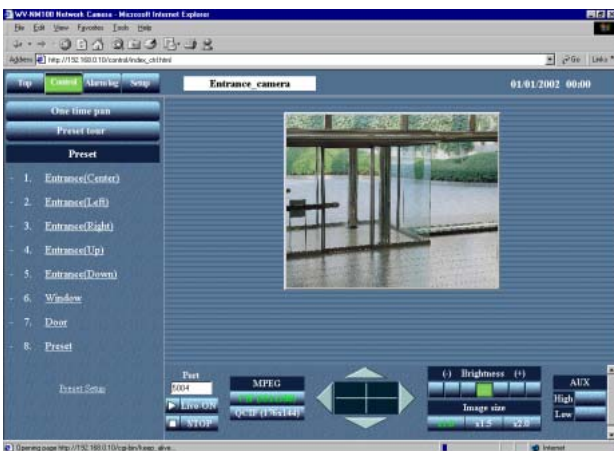
Screenshot 1

Begin the operation from the "Basic setup" page.



Screenshot 2

The "Control" page appears.



Notes

- If the preparations have been completed, start up the browser and display the "Top Menu" page of the desired camera. The camera picture appears on the "Top Menu" page.
- The port number for the MPEG-4 streaming is set to 5004. If another application uses this port, change the port number to another even-numbered port number.
- To switch the currently monitored picture to another camera picture, click the [STOP] button to stop displaying the currently monitored picture. Then, enter the IP address of the desired camera in the "Address" box of the browser to monitor the desired camera picture.

STEP1

Click the [Control] button.

STEP2

To display the motion picture of the selected camera, click the [Live-ON] button.

To quit displaying the motion picture of the selected camera, click the [STOP] button. The motion picture disappears.

On this page, you can also operate the camera and adjust the motion picture.

Panning and tilting

Click the arrow buttons (up / down / right / left) to adjust the horizontal and vertical position.

The center of the box surrounded by the arrow buttons (the point where the horizontal line and the vertical line cross) is the current position of the camera.

If you click inside the box surrounded by the arrow buttons, you can pan and tilt the camera wider than by clicking the arrow buttons.

Image capture size

Click one of the motion picture resolution buttons (CIF (352 x 288) / QCIF (176 x 144)) to display the motion picture with the desired resolution.

Adjustment of the brightness of the motion picture

Click the buttons to adjust the brightness of the motion picture. The left end button (-) is the darkest and the right end button (+) is the brightest. The green button is the currently selected level.

Image size

Click one of the buttons (x1.0 / x1.5 / x2.0) to select the desired motion picture size. When the picture is magnified, the quality of the picture may be decreased.

AUX

Click one of the buttons (High/Low) to set the status of the AUX output connector. (Refer to p. 53 for details.)

One time pan

You can monitor the picture by panning the camera one time to the left and right.

BROWSING PICTURES

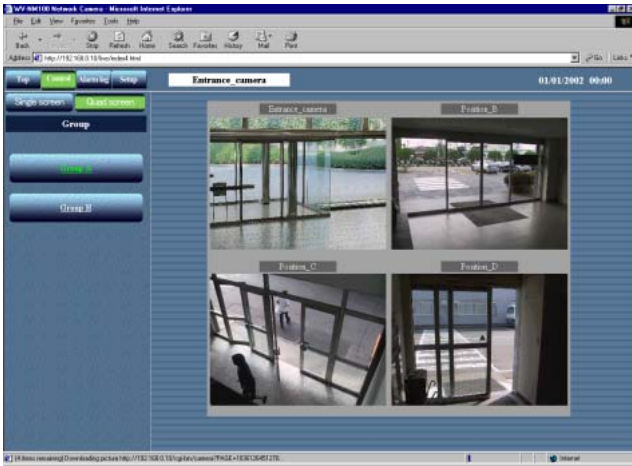
Monitoring Still Pictures of Multiple Cameras

You can monitor pictures of multiple cameras on a single monitor screen (multi-screen) simultaneously.

You can display multiple camera pictures from up to four cameras on a single monitor screen.

To monitor camera pictures on the multi-screen, registration of the cameras to be monitored on the multi-screen is required.

You can register up to eight cameras as two groups by registering four cameras in each group.



! Important

- Only still pictures (JPEG) can be monitored on a multi-screen. You cannot monitor motion pictures (MPEG-4) on a multi-screen.
- Select "OFF" for both "Host authentication" and "User authentication" of the camera to be registered for monitoring on the multi-screen, or set the same user name and password to all of the cameras to be registered.

Preparations

Register the cameras to be monitored on the multi-screen.

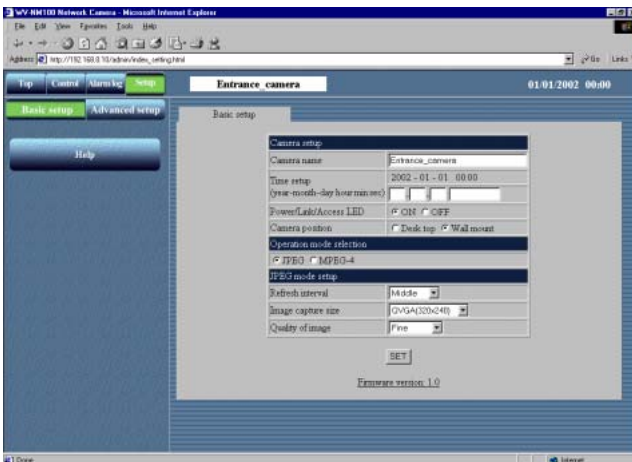
First, the setting for still pictures on the "Basic setup" page is required.

Start up the browser and display the "Basic setup" page of the desired camera.

Refer to page 24 and 25 to display the "Basic setup" page.

Screenshot 1

Begin the operation from the "Basic setup" page.



STEP1

Click the "JPEG" radio button for "Operation mode selection".

STEP2

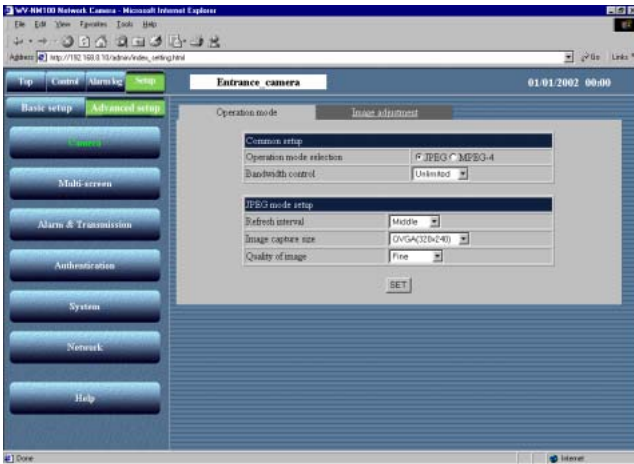
Set the details for JPEG in "JPEG mode setup". For further information, refer to page 32.

STEP3

Click the [Advanced setup] button.

Screenshot 2

The "Operation mode" page of "Advanced setup" appears.

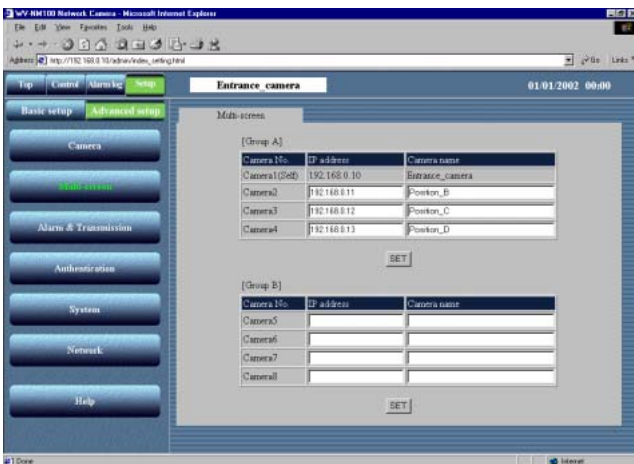


STEP4

Click the [Multi-screen] button.

Screenshot 3

The "Multi-screen" page appears.



STEP5

Set the IP addresses of the cameras to be monitored on the multi-screen.

You can register up to eight cameras as two groups by registering four cameras in each group.

Camera 1 – Camera 4 are registered as Group A, and Camera 5 – Camera 8 are registered as Group B.

STEP6

Click the [SET] button after completing the setting.

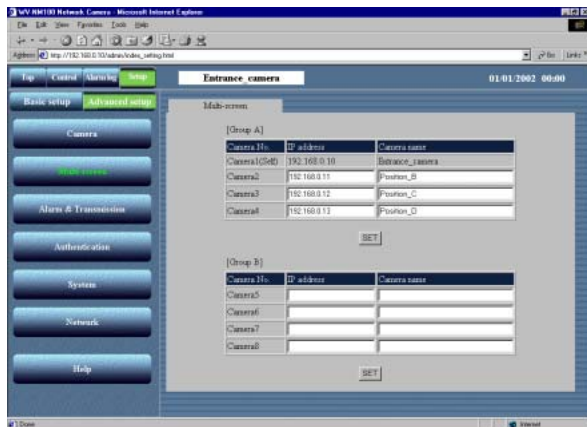
BROWSING PICTURES

How to Operate

If the settings of "Multi-screen" have been completed, you can begin the operation from the "Multi-screen" page.

Screenshot 1

Begin the operation from the "Multi-screen" page.

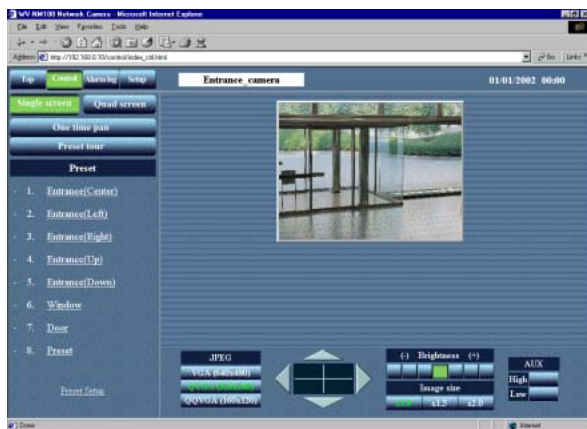


STEP1

Click the [Control] button in the top left corner.

Screenshot 2

The "Control" page appears. The still picture of the camera is displayed.

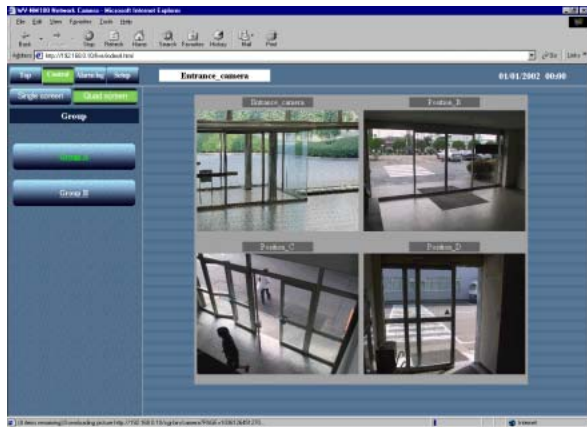


STEP2

Click the [Quad screen] button.

Screenshot 3

The camera pictures are displayed on the quad screen.



STEP3

If five cameras or more are connected, the next multi-screen will be displayed by pressing the [Group B] button.

Monitoring the Picture of a Camera in a Preset Position

You can monitor both the still picture and the motion picture of a camera installed in a place registered as a preset position.

To monitor the image of the camera in a preset position, adjusting the position of the camera (horizontal and vertical position) and registering the shooting location, as a preset position is required in advance.

Registration of a preset position

Begin to register a preset position of the camera.

Register the preset number and preset name of a preset position.

Up to eight preset positions can be registered.

Screenshot 1

Begin the operation from the "Control" page.

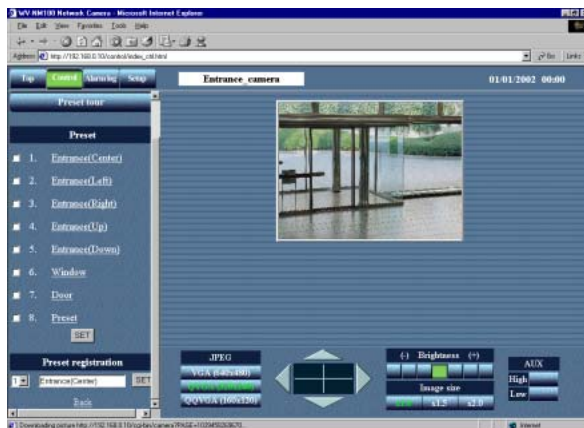


STEP1

Click "Preset Setup".

Screenshot 2

The "Preset registration" area appears below the list of "Preset".



STEP2

Click the arrow buttons (up / down / right / left) to adjust the horizontal and vertical position of the picture.

STEP3

After the adjustment of the position has been completed, select a preset number and enter a preset name for the preset position. And then, click the [SET] button.

Characters for the preset name: 1 character to 32 characters

STEP4

Repeat STEP 2 to STEP 3 to register more preset positions.

To add a registered preset position to "Preset tour", check the box next to the desired preset name. (Uncheck the box to delete it from "Preset tour".)

Click the [SET] button after completing the setting.

! Important

- If the preset position is not registered, you cannot add the preset position to "Preset tour".
- If a preset name is not entered, you cannot select the preset position. (Preset name cannot be clicked as it does not appear in the "Preset" area.)

BROWSING PICTURES

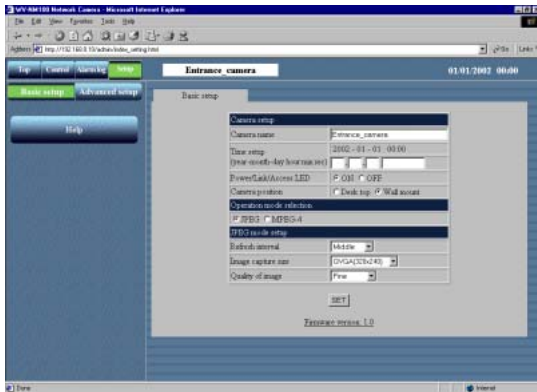
How to Operate

Monitor the picture of the camera in a preset position.

First, select whether a still picture or a motion picture is to be monitored in a preset position on the "Basic setup" page. Refer to page 24 and 25 to display the "Basic setup" page.

Screenshot 1

Begin the operation from the "Basic setup" page.



STEP1

Select whether a still picture or a motion picture is to be monitored in a preset position.

Refer to page 32 to monitor a still picture, and page 34 to monitor a motion picture.

STEP2

After the setting has been completed, click the [Control] button.

Screenshot 2

The "Control" page appears.

(This screenshot is displayed when you choose a still picture to be monitored in a preset position.)



STEP3

Click the desired preset name from the list of "Preset".

Screenshot 3

The picture of the camera in the selected preset position appears.



Notes

- You can also operate the camera and adjust the picture. For further information, refer to page 33.
- To register more preset positions or change a registered preset position, click "Preset Setup". The "Preset registration" area appears below the list of "Preset" and you can register or change preset positions.

Saving the Currently Monitored Picture on the PC

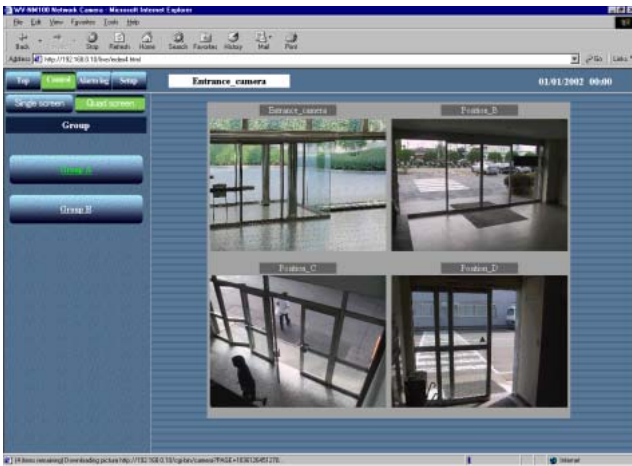
Save the still picture currently monitored as a file on the PC.
You can save the picture either as single screen or multi-screen (quad screen).

! Important

You can save only still pictures (JPEG). Saving motion pictures (MPEG-4) is not available.

Screenshot 1

Operate while monitoring the picture.
(The screenshot below shows when a multi-screen is used.)

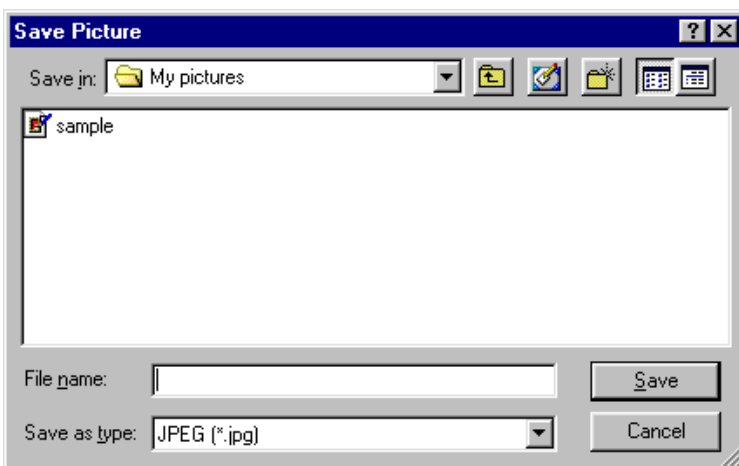


STEP1

Move the cursor on the picture to save and click the right mouse button to select "Save Image As..." from the pop-up menu.

Screenshot 2

The "Save Picture" window appears.



STEP2

Enter a name for the image in the "File name" box.

STEP3

After entering the file name with the file extension ".jpg", click the [Save] button. The picture will be saved on the PC.

DETECTING MOTION IN THE MONITORED AREA

When motion is detected in the monitored area, "Alarm" appears on the monitor screen. Simultaneously, you can save the picture of the alarmed area and send an alarm mail by e-mail (motion detector function).

You can also automatically transfer the saved image to the server.

To activate these functions, complete the setting of the "Alarm" page or the "FTP client" page in advance.

Notes

- In case a sensor is connected to the alarm connector of the camera, the functions above are available when the sensor detects motion.
- To reset an alarm, click "Alarm" on the monitor screen.

Motion Detector Function

By using the motion detector function, the alarm signal is sent when motion (changes in the brightness level) is detected in the designated area. With this camera, you can save the picture of the designated area or send an alarm mail when motion is detected.

Set the detection area and the other conditions required for the motion detector function on the "VMD area" page.

! Important

- The motion detector function is available only when "JPEG" is selected for the "Operation mode selection" on the "Operating mode" page of "Advanced setup". The motion detector function does not work when "MPEG-4" is selected.
- When the motion detector function is activated, the speed of loading still pictures (JPEG) may become slower.
- In case the motion detector function is set to ON, when the brightness level setting is changed an alarm will be detected.

Action when Motion is Detected

By setting the motion detector function, you can set the camera to activate the following operations when motion (changes in the brightness level) is detected in the designated area.

- **When motion is detected, "Alarm" appears on the monitor screen as shown in screenshot below.**

"Alarm" will disappear by clicking on it.



Note

The camera checks the alarm status and reloads the browser page by the minute or when the reload button is pressed. Therefore, approximately a minute delay at the maximum may occur until "Alarm" appears on the browser after an alarm occurred.

- **You can save the picture of the area where motion is detected on the camera.**

Number of pictures you can save: 30 pictures max. per 1 alarm (You can set the number of images to be saved up to 20 pictures for pre-alarm and up to 20 pictures for post-alarm, but the total number of images to be saved should be 30 pictures max.)

Maximum number of pictures saved: Up to 60 pictures without reference to sizes.

The older pictures will automatically be deleted if the number of the pictures exceeds 60 pictures.

! Important

Setting of the number of pictures to be saved per 1 alarm (for pre-alarm and post-alarm) to secure the space for the set number of pictures is required in advance. For example, if the number of pictures to be saved per 1 alarm is set to 20 pictures (10 for pre-alarm and 10 for post-alarm), the maximum number of pictures that can be saved will be 39. (The maximum number of pictures that can be saved is 60 but the space secured in advance for 20 pictures and 1 picture which is currently used must be subtracted.)

- **Inform by sending e-mails.**

You can send an alarm mail that notifies an alarm has occurred and the alarm date and time to a designated e-mail address registered in advance.

You can also attach a picture to that mail.

You can register up to four e-mail addresses to which this alarm mail will be sent.

Contents of the alarm mail:

"In WV-NM100, Alarm was occurred.

Date: XXXX.XX.XX.XX:XX:XX

URL: http:// xxx.yyy.zzz.nnn/alarm/image/*****.jpg"

(XXXX.XX.XX.XX:XX:XX is the date: year-month-day hour:min:sec)

(xxx.yyy.zzz.nnn is the IP address of the camera)

(***** is the file name)

The alarm mail contains the link address to the saved picture on the camera. This link address is available only when a global IP address is assigned to the camera. If a private address is assigned to the camera, only PCs in the same subnet of the camera can access to this link address. However, the picture accessed from the link address may have been deleted if alarms occur frequently.

You can customize the contents of the alarm mail. For further information, refer to page 53.

Note

When user authentication is activated on the "User authentication" page, authentication is required before users access the picture. (Refer to p.60.)

- **Transfer the saved pictures to the server.**

You can transfer the pictures saved in the camera to a server designated in advance. Refer to page 49 for the settings.

Settings of the Actions to be Performed when Motion is Detected

Set actions to be performed when motion is detected.

The settings can be made in the "Alarm" page.

! Important

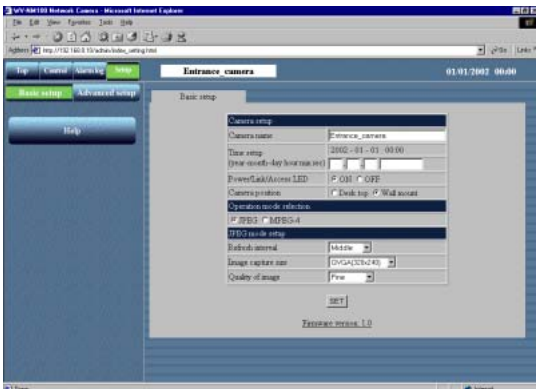
Do not perform panning, tilting or preset operations after setting the motion detection area.

The detection area will be inaccurate and it may be impossible to detect motion in the area under surveillance.

Screenshot 1

Begin the operation from the "Basic setup" page.

Refer to page 24 and 25 to display the "Basic setup" page.



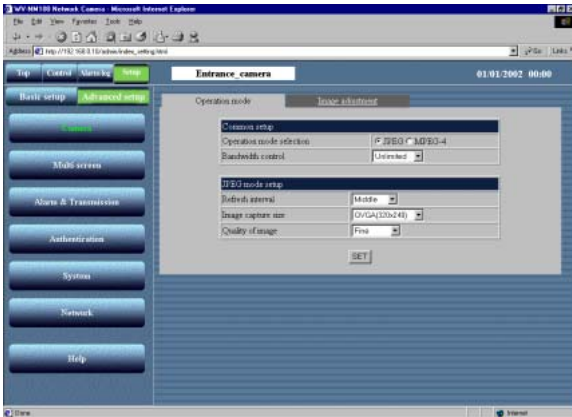
STEP1

Click the [Advanced setup] button.

DETECTING MOTION IN THE MONITORED AREA

Screenshot 2

The "Operation mode" page of "Advanced setup" appears.

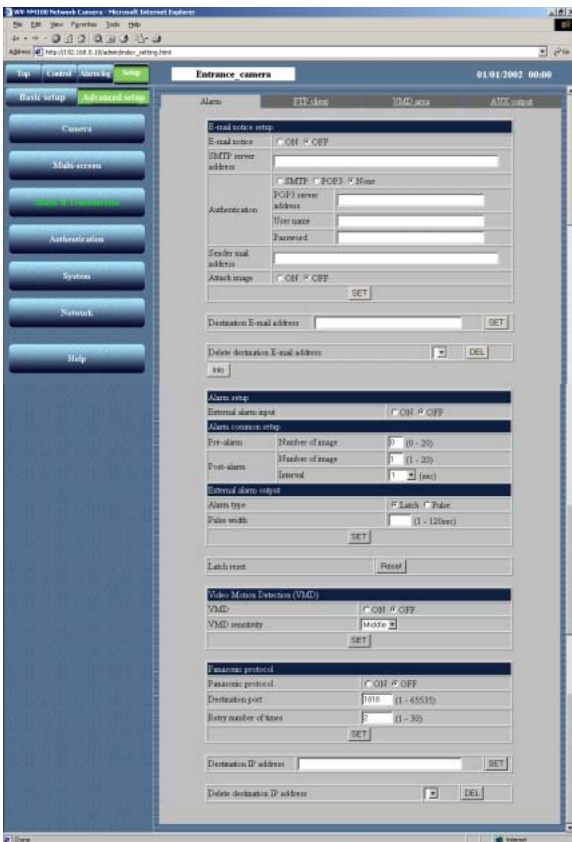


STEP2

Click the [Alarm&Transmission] button.

Screenshot 3

The "Alarm" page appears.



STEP3

Set the items on the "Alarm" page.
Refer to the next page for details about each item.

STEP4

Click the [SET] button after completing the setting.

Items on the "Alarm" page

[E-mail notice setup]

"E-mail notice"

Select "ON" or "OFF" to set whether to notice by e-mail or not when an alarm occurs.

"SMTP server address"

Enter the SMTP server address of the sender

"Authentication"

Select "SMTP", "POP3" or "None" for the authentication.

"SMTP": Authentication by the SMTP server

"POP3": Authentication by POP before SMTP

"None": No authentication

"POP3 server address"

Enter the POP3 server address when "POP3" is selected for "Authentication".

"User name"

Enter the name of the sender, up to 64 characters.

"Password"

Enter a password of the sender mail address, up to 64 characters.

"Sender mail address"

Enter the sender mail address.

"Attach image"

Select "ON" or "OFF" to set whether to attach an image or not when sending an e-mail. (Only still picture can be attached.)

"Destination E-mail address"

Enter the e-mail address of the recipient. Up to four recipients can be registered.

"Delete destination E-mail address"

Click the [▼] button to check the registered e-mail address of the recipient.

You can delete the selected e-mail address of the recipient by clicking the [DEL] button.

[Info] button

Displays the error information page. You can check the situation of the error occurrence. For further information, refer to page 71.

[Alarm setup]

"External alarm input"

Select "ON" or "OFF" to set whether to receive alarm input signals or not. For further information, refer to page 53.

[Alarm common setup]

"Pre-alarm"

"Number of image": Set the number of images to store in pre-alarm. You can select a number between 0 and 20.

"Post-alarm"

"Number of image": Set the number of images to store in post-alarm. You can select a number between 1 and 20.

"Interval": Select a frame rate for the image to store among the following:

1/10, 1/5, 1/3, 1/2, 1, 2, 3, 5, 10 (sec)

[External alarm output]

"Alarm type"

Select "Latch" or "Pulse" for the alarm output mode.

"Pulse width"

Set the pulse width for the alarm output.

"Latch reset"

When resetting of the alarm output latching is required, click the [Reset] button.

[Video Motion Detection (VMD)]

"VMD"

Select "ON" or "OFF" to activate the motion detector function.

"VMD sensitivity"

Select a sensitivity level for the motion detector among the following:

High / Middle / Low

[Panasonic protocol]

Alarm notification using the Panasonic protocol.

"Panasonic protocol"

Select ON or OFF to set whether to use the Panasonic protocol or not for alarm notification.

"Destination port"

Enter a port number from 1 to 65535 to be used when notifying a server software.

"Retry number of times"

Enter the retry times from 1 to 30 in case of notification failure.

"Destination IP address"

Enter up to 8 IP addresses of the server software.

"Delete destination IP address"

Click the [▼] button to check the IP addresses registered as destination. To delete a selected IP address, click the [DEL] button.

! Important

- Up to 60 pictures can be saved. The older pictures will automatically be deleted if the number of the pictures exceeds 60 pictures.
- If "1/10" or "1/5" is selected for "Interval" of "Post-alarm", the interval to store the image may be longer than the setting.

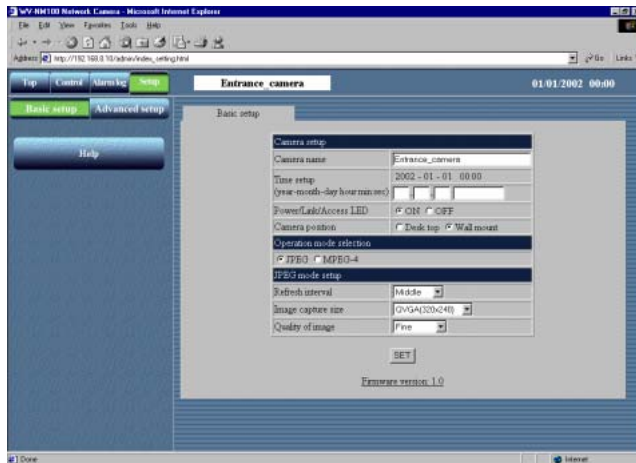
DETECTING MOTION IN THE MONITORED AREA

Setting of the Motion Detection Area

Set the area where motion has to be detected. You can set up to four areas. The setting can be made on the "VMD area" page of "Alarm&Transmission".

Screenshot 1

Begin the operation from the "Basic setup" page.
Refer to page 24 and 25 to display the "Basic setup" page.

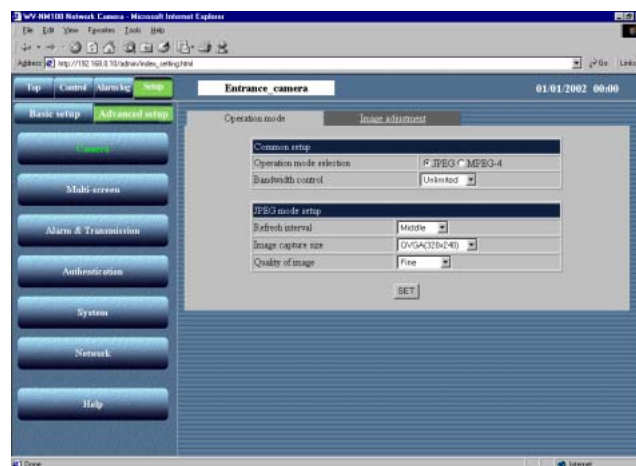


STEP1

Click the [Advanced setup] button.

Screenshot 2

The "Operation mode" page of "Advanced setup" appears.

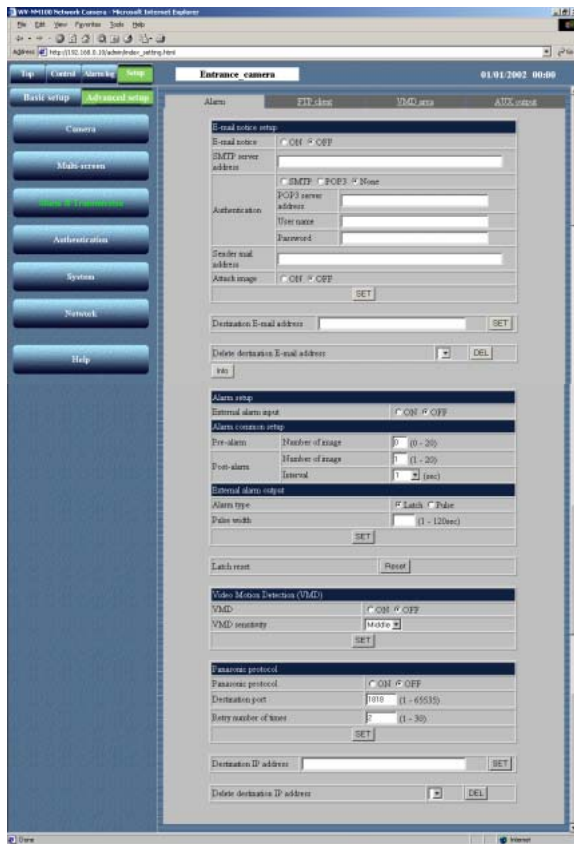


STEP2

Click the [Alarm&Transmission] button.

Screenshot 3

The "Alarm" page appears.

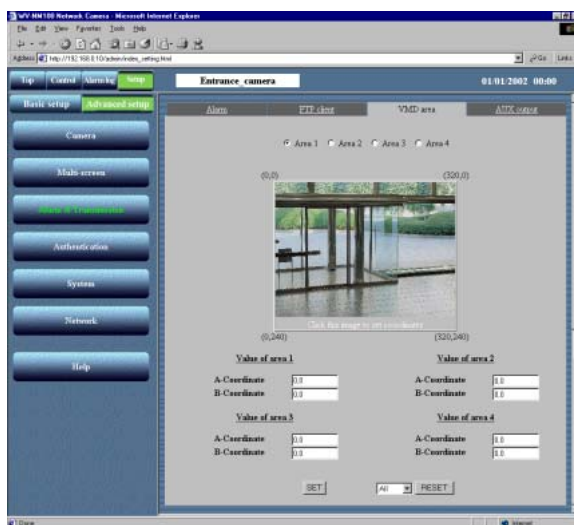


STEP3

Click the [VMD area] tab.

Screenshot 4

The "VMD area" page appears.



STEP4

Select the desired area number to be registered by clicking the [Area 1] - [Area 4] radio buttons. Up to four areas can be designated. Designate the area for the selected area number by clicking on the picture. To designate the area, click the top left corner and the bottom right corner of the area you wish to set. To cancel the designated area, select the area number to be canceled from the pull-down menu, and press the [RESET] button.

STEP5

Click the [SET] button after completing the setting.

DETECTING MOTION IN THE MONITORED AREA

Viewing the Picture Stored in the Camera

Check the picture stored in the camera when the alarm occurred. This operation can be made on the "Alarm log list" page. You can browse the saved pictures after the alarm has been reset.

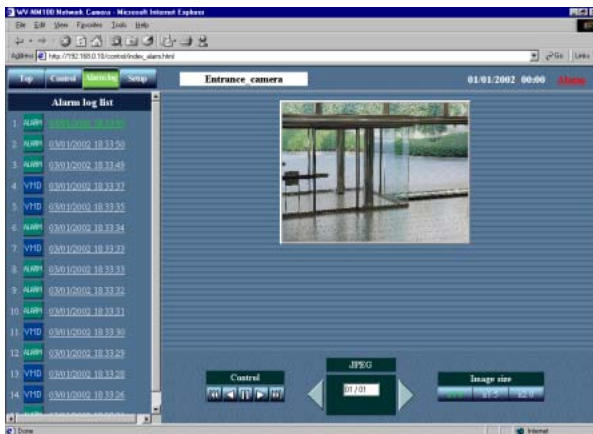
Screenshot 1

Begin the operation from the "Top Menu" page. Refer to page 24 and 25 to display the "Top Menu" page.



Screenshot 2

The "Alarm log list" page appears.



! Important

- Though the "Alarm log list" displays up to 100 alarm logs, only 60 pictures can be stored at the maximum.
- Depending on the traffic of the network, a drop frame may occur while monitoring alarm pictures. If this occurs, click the [▶] button or the [◀] button to monitor each frame.
- Display the saved still pictures (JPEG) using the web browser. Some image-editing software cannot open or display the saved still pictures.

STEP1

Click the [Alarm Log List] button.

STEP2

Click the desired log from the alarm log list on the left side.

The picture (JPEG) of the selected log appears on the right side. (Only if the selected picture is remaining.)

To view the previous or next picture automatically

Operate the "Control" buttons.

[▶] button: Displays the next picture automatically.

[◀] button: Displays the previous picture automatically.

[||] button: Stops displaying the picture automatically.

[▶▶] button: Displays the last picture.

[◀◀] button: Displays the first picture.

JPEG

n (current frame number)/nn (total frame number) appears in the box surrounded by [▶] and [◀] buttons.

[▶] button: Displays the next frame.

[◀] button: Displays the previous frame.

Image size

Click one of the buttons (x1.0 / x1.5 / x2.0) to select the desired image size.

STEP3

To return to the current camera picture, click the "Control" button.

TRANSFERRING PICTURES TO THE SERVER

Transfer the pictures stored in the camera to the server. The transfer to the server can be made in the two following ways:

- Transfer pictures when an alarm occurred in the motion detection area.
- Transfer pictures at designated intervals.

To transfer the pictures to the server, the settings are required in advance.

! Important

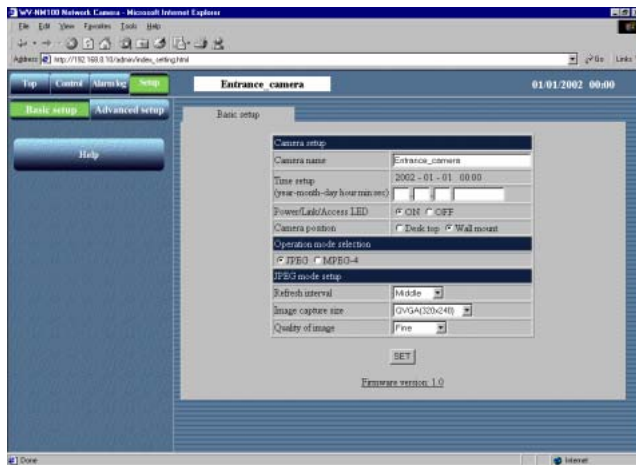
Only still pictures can be transferred to the server. Transferring motion picture to the server is not possible.

Preparations for Transferring Pictures to the Server

Set the FTP settings to transfer pictures to the server. The settings can be made on the "FTP client" page of "Alarm&Transmission".

Screenshot 1

Begin the operation from the "Basic setup" page.
Refer to page 24 and 25 to display the "Basic setup" page.

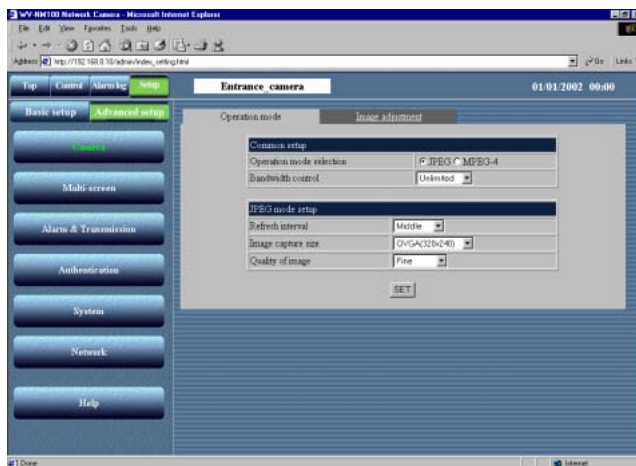


STEP1

Click the [Advanced setup] button.

Screenshot 2

The "Operation mode" page of "Advanced setup" appears.



STEP2

Click the [Alarm&Transmission] button.

TRANSFERRING PICTURES TO THE SERVER

Screenshot 3

The "Alarm" page of "Alarm&Transmission" appears.



STEP3

Click the [FTP client] tab.

STEP4

Set the items on the "FTP client" page.

This explanation is only for "Common setup".

"FTP server address"

Enter the address of the server where to transfer the picture. You can enter the IP address or the host name.

"User name"

Enter a user name for login in the FTP server, up to 64 characters.

"Password"

Enter a password for login in the FTP server, up to 64 characters.

"Mode"

Select the transfer mode from "Sequential" or "Passive". In case the connection can not be made selecting "Sequential", select "Passive".

"FTP enable time 1" "FTP enable time 2"

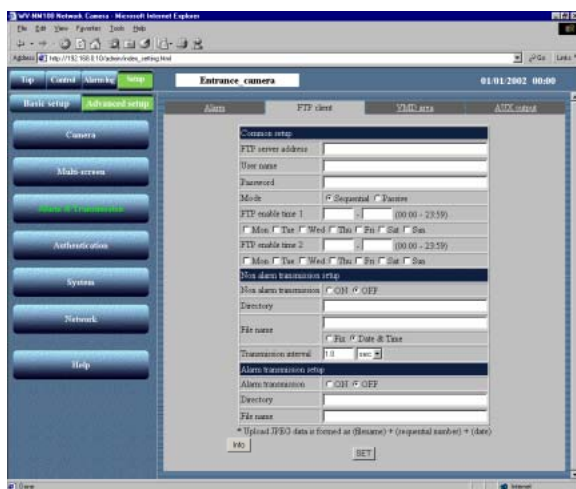
Set the day of the week and the time range (start time – finish time) for the pictures to be transferred. Check the desired day of the week and enter the desired time range.

[Info] button

Displays the error information page. You can check the situation of the error occurrence. For further information, refer to page 71.

Screenshot 4

The "FTP client" page of "Alarm&Transmission" appears.



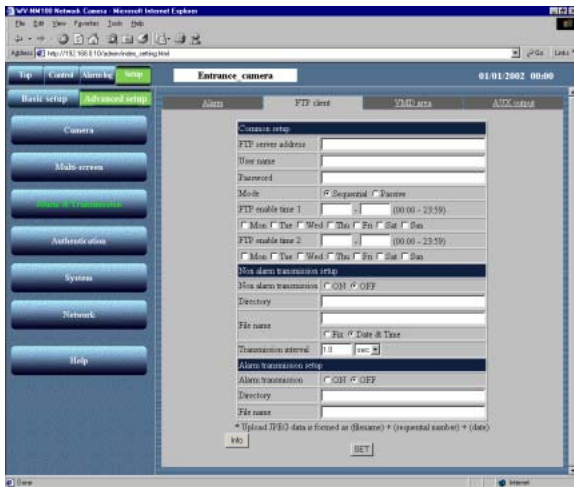
STEP5

Click the [SET] button after completing the setting.

Transferring Pictures to the Server at Designated Intervals

Set the interval time to transfer pictures to the server at designated intervals.

The setting can be made on the "FTP client" page of "Alarm&Transmission". Refer to page 49 and 50 to display the "FTP client" page of "Alarm&Transmission".



STEP1

Set the items for "Non alarm transmission setup".

"Non alarm transmission"

Check "ON".

You can select "ON" or "OFF" to set whether to transfer the picture at designated intervals or not.

"Directory"

Enter the directory where the pictures should be stored.

"File name"

Enter the file name of the picture to be transferred.

"Fix": The file name of the picture to be transferred is the name designated in "File name".

"Date & Time":

The file name of the picture to be transferred will be "File name + sequential number + month / day / hours / minutes / seconds / year".

The sequential number will be given starting from 1 automatically.

! Important

The total number of characters of the directory name and the file name should not exceed 255 characters.

"Transmission interval"

In case "ON" is selected for "Non alarm transmission", enter a number within the range below for the transmission interval.

0.2 second to 1,440 minutes

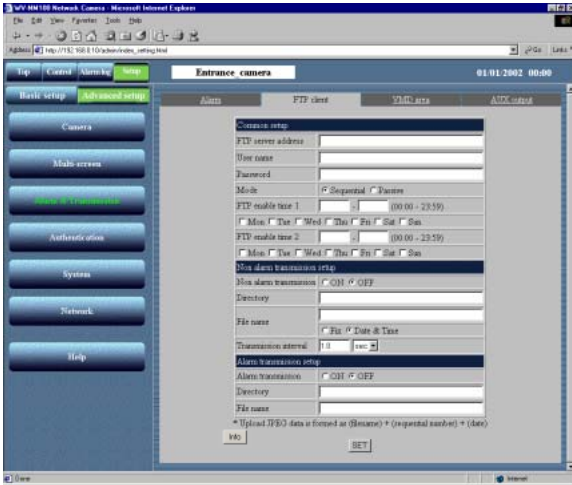
STEP2

Click the [SET] button after completing the setting.

TRANSFERRING PICTURES TO THE SERVER

Transferring Pictures to the Server when Motion is Detected

Set for the pictures of the motion detection area to be transferred to the server when motion is detected by the motion detector function. The settings can be made on the "FTP client" page of "Alarm&Transmission". Refer to page 49 and 50 to display the "FTP client" page of "Alarm&Transmission".



STEP1

Set the items for "Alarm transmission setup".

"Alarm transmission"

Check "ON".

You can select "ON" or "OFF" to set whether to transfer the pictures or not when an alarm occurs.

"Directory"

Enter the directory where the pictures should be stored.

"File name"

The file name to be transferred will be [File name (name of the picture entered by the user) + sequential number + month / day / hours / minutes / seconds / year].

The sequential number will be given automatically starting from 1.

! Important

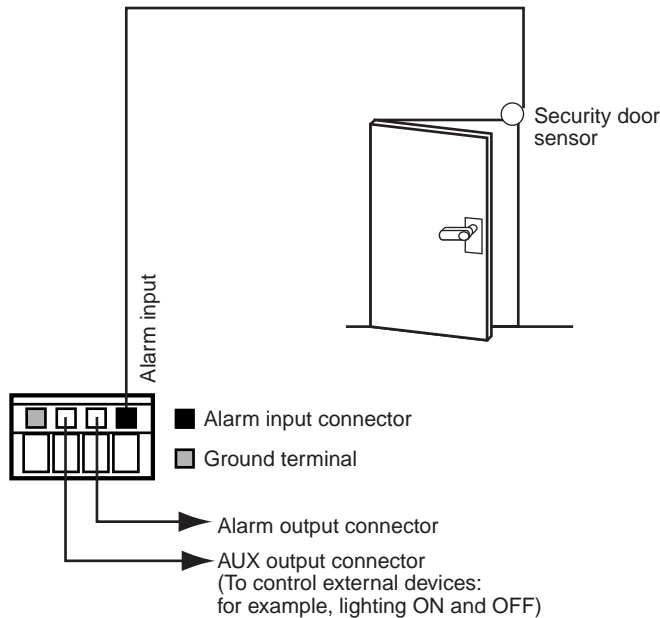
The total number of characters of the directory name and the file name should not exceed 255.

STEP2

Click the [SET] button after completing the setting.

OTHER FUNCTIONS

Alarm Connector and AUX Output Connector

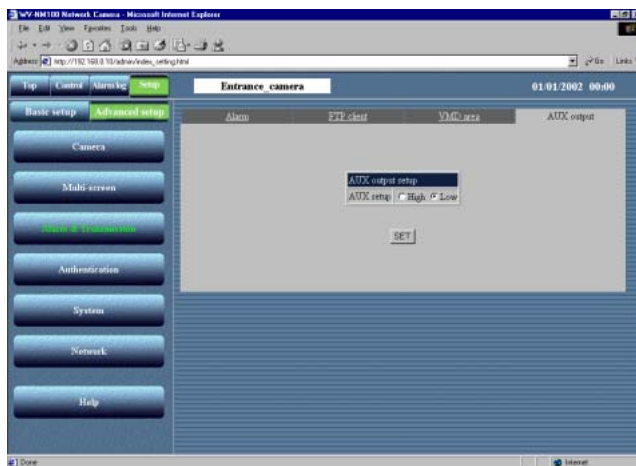


You can set the alarm operation when an external device such as a sensor is connected to the alarm connector inside the cord cover of the camera.

You can set functions such as sending e-mails or transferring pictures to the server when an alarm signal is input by a sensor, as explained in "Settings of the Actions to be Performed when Motion is Detected" on page 43.

! Important

Do not connect an external device if it is beyond the specified ratings of the camera (refer to page 68).



You can set the type of the device connected to the AUX output connector.

The settings can be made on the "AUX output" page of "Alarm&Transmission".

Click the [Alarm&Transmission] button, and then click the [AUX output] tab.

The "AUX output" page of "Alarm&Transmission" appears and you can check the current setting of the "AUX setup".

Click the [SET] button after selecting "High" or "Low", according to the specifications of the external device to be connected, to enable the setting.

Customizing the Contents of the Alarm Mail

You can customize the contents of the alarm mail notifying that an alarm has occurred and the alarm date and time. To customize them, do the following:

STEP1 Create the contents of the alarm mail with a text editor and save the file as "almmail.tpl".

STEP2 Start up the FTP software and connect to the camera by entering the IP address of the camera. The destination where to transfer the file is "/flash". To login to the camera, enter "admin" for the user name and the password registered for the user name "admin" if the password has been changed (the default password is "password").

STEP3 Upload the new file (almmail.tpl) in text format to the camera.

ADVANCED SETTINGS

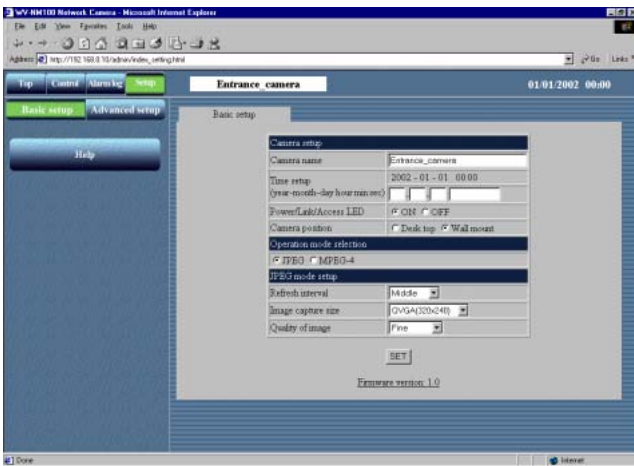
This section explains the advanced settings for the quality of the pictures, the user authentication, etc.

Advanced Settings for "Operation mode"

Set the "Operation mode" (JPEG / MPEG-4) in more detail than in the "Basic setup".
The advanced setting can be made on the "Operation mode" page of "Advanced setup".

Screenshot 1

Begin the operation from the "Basic setup" page.
Refer to page 24 and 25 to display the "Basic setup" page.

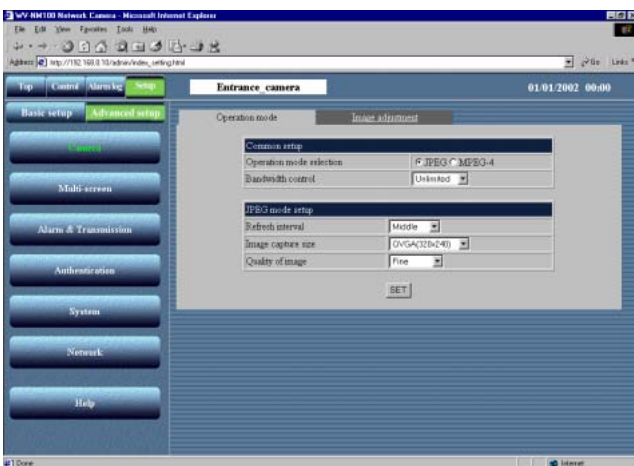


STEP1

Click the [Advanced setup] button.

Screenshot 2

The "Operation mode" page of "Advanced setup" appears.



STEP2

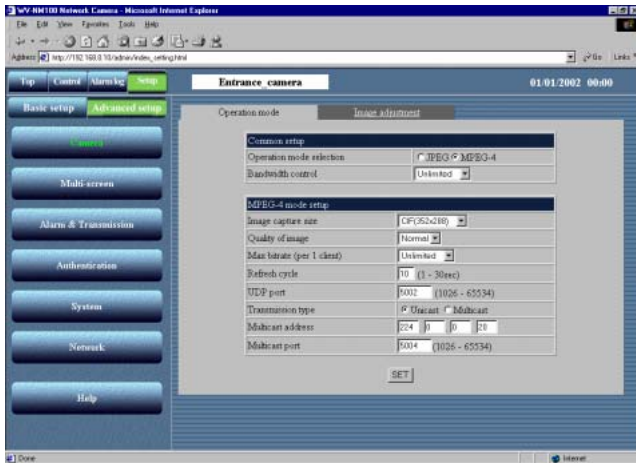
Set the "Advanced setup" for JPEG and MPEG-4. (When MPEG-4 is selected, the window in the following page appears.)

Refer to the next page for the explanation of the setting items.

STEP3

Click the [SET] button after completing the setting.

(When "JPEG" is selected)



(When "MPEG-4" is selected)

Setting items

"Operation mode selection"

Select "JPEG" (still picture) or "MPEG-4" (motion picture). The parameters for JPEG/MPEG-4 setting automatically appear.

"Bandwidth control"

Select a bandwidth control from the following:
32 / 64 / 128 / 256 / 512 / 1024 / Unlimited (kbps)

"JPEG mode setup"

If "JPEG" is selected, the setting of the following items is required.

"Refresh interval"

Select a refresh interval from the following:

Fast / Middle / Slow / Very Slow

"Image capture size"

Select an image capture size from the following:
VGA (640 x 480) / QVGA (320 x 240) / QQVGA (160 x 120)

"Quality of image"

Select a quality of the image from the following.

Super Fine / Fine / Normal / Low

"MPEG-4 mode setup"

If "MPEG-4" is selected, the setting of the following items is required.

"Image capture size"

Select an image capture size from the following:
CIF (352 x 288) / QCIF (176 x 144)

"Quality of image"

Select a quality of the image from the following.
Fine / Normal / Low

"Max bitrate (per 1 client)"

Select an M-PEG bit rate for each client.
32/64/128/256/512/1024/Unlimited (kbps)

"Refresh cycle"

In a network environment with frequent errors, by setting the refresh cycle shorter, you can decrease the cause of interference on the monitor screen. However, the loading speed may become slower. Enter a number between 1 and 30 (sec).

"UDP port"

Enter the transmission port number of the camera.

"Transmission type"

Select "Unicast" or "Multicast" for the transmission setting.

"Unicast": Up to four users can connect to a single camera to monitor the picture.

"Multicast": Maximum number of users connected in a subnet can connect to a single camera to monitor the picture.

"Multicast address"

Set the multicast IP address for transmission.

"Multicast port"

Set the multicast port number (number of the port that the camera uses to transmit the picture) for transmission.

! Important

- If the setting item is overlapped between "Basic setup" and "Advanced setup", the latest setting has priority. For example, if a different setting is made on the "Operation mode" page after the same item has been set on the "Basic setup" page, the setting made on the "Operation mode" page is valid.
- You may have problems browsing still/motion pictures depending on the bandwidth of the network to which the camera is connected. In this case, perform the setting of "Bandwidth control" on the "Operation mode" page of "Advanced setup".
- Depending on the traffic of the network, there might be difficulties displaying the picture. In this case, select Slow or Very Slow for "Refresh interval" of "JPEG mode setup".

ADVANCED SETTINGS

Adjusting the Picture

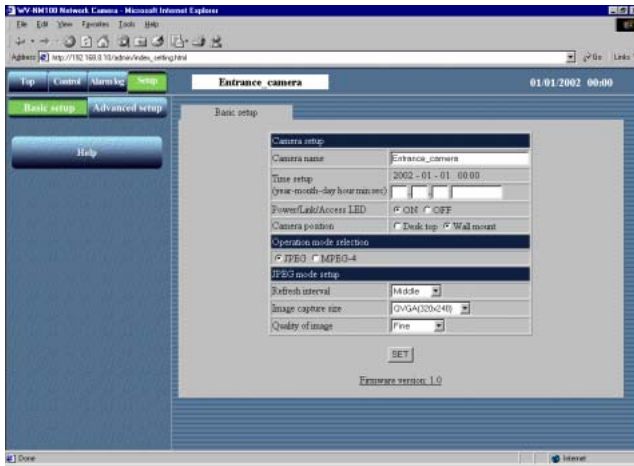
Adjust the picture in detail.

The adjustment can be made on the "Image adjustment" page of "Advanced setup".

Screenshot 1

Begin the operation from the "Basic setup" page.

Refer to page 24 and 25 to display the "Basic setup" page.

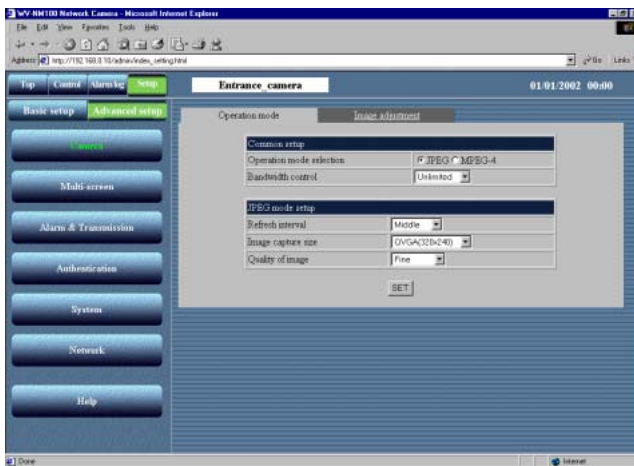


STEP1

Click the [Advanced setup] button.

Screenshot 2

The "Operation mode" page of "Advanced setup" appears.

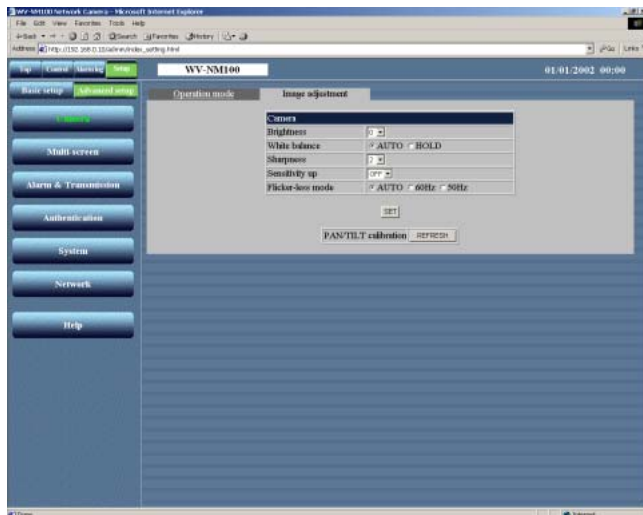


STEP2

Click the [Image adjustment] tab.

Screenshot 3

The "Image adjustment" page of "Advanced setup" appears.



STEP3

Set and adjust the picture in detail.

"Brightness"

Adjust the brightness level of the picture (seventeen levels from "-8" to "8"). When the number is decreased, the picture gets darker. When the number is increased, the picture gets brighter.

"White balance"

Select "AUTO" or "HOLD" to adjust the white balance.

"AUTO": The white balance is adjusted automatically.

"HOLD": The white balance is fixed.

"Sharpness"

Adjust the sharpness level of the picture (nine levels from "-4" to "4"). When the number is decreased, the picture gets softer. When the number is increased, the picture gets sharper.

"Sensitivity up"

Select a parameter from the following: OFF, 2 to 10

If "Sensitivity up" is set to 2 or more, the shutter speed gets slower and the sensitivity is increased automatically under low illumination conditions.

"Flicker-less mode"

Select one of the following modes to prevent flicker by fluorescent light. When the camera is used under bright fluorescent light, select "60 Hz" or "50Hz".

"AUTO": Select this when this camera is used under normal fluorescent light.

"60Hz": Select this when this camera is used in areas supplied with current at 60Hz frequency.

"50Hz": Select this when this camera is used in areas supplied with current at 50Hz frequency.

STEP4

Click the [SET] button after completing the setting.

"PAN / TILT calibration"

Correct the misalignment of the lens (horizontal position / vertical position) with the refresh function.

[REFRESH]

Click this button to refresh.

! Important

- If the object is under low illumination conditions, the quality of the picture may decrease if compared to that with enough light. (A noisy picture, white-tinged picture, or the appearance of bright spots may occur.)
- If "Sensitivity Up" is set to 2 or more, an afterimage of the moving object may appear.

ADVANCED SETTINGS

Settings for the Host Authentication

Begin the setting for the host authentication.

You can set a double authentication for the operation of the camera.

One is the host authentication and the other is the user authentication.

The host authentication checks if an IP address of a PC accessing the camera is registered as a host or not.

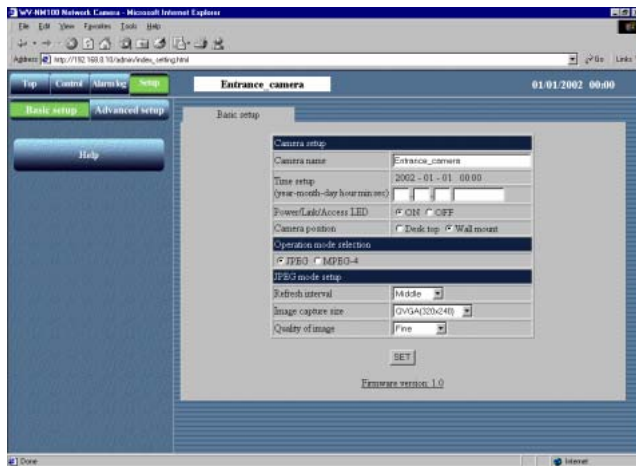
Up to eight PCs can be registered for the host authentication.

The setting of the host authentication is made on the "Host authentication" page.

Screenshot 1

Begin the operation from the "Basic setup" page.

Refer to page 24 and 25 to display the "Basic setup" page.

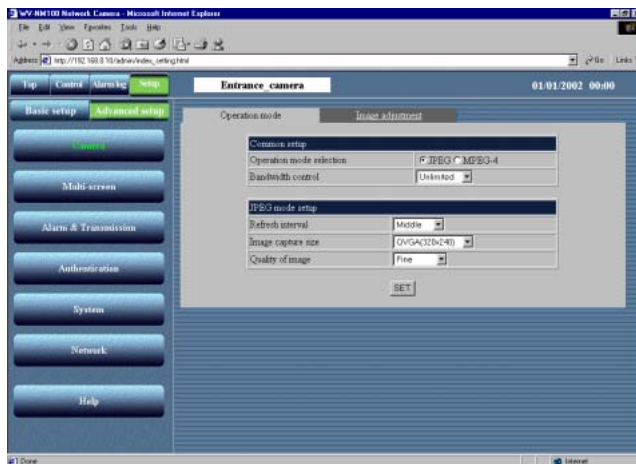


STEP1

Click the [Advanced setup] button.

Screenshot 2

The "Operation mode" page of "Advanced setup" appears.

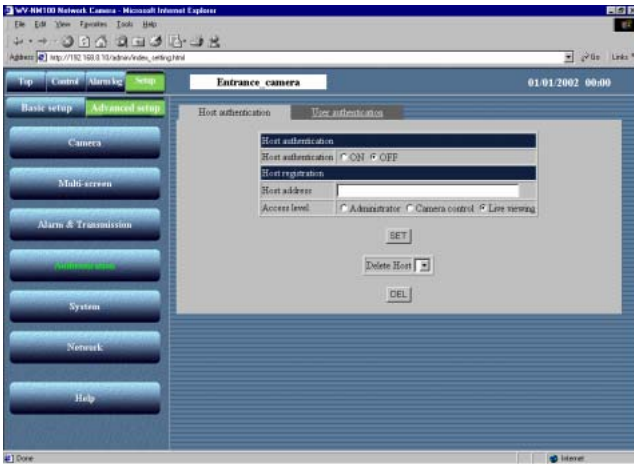


STEP2

Click the [Authentication] button.

Screenshot 3

The "Host authentication" page appears.



STEP3

Begin the setting for the host authentication.

"Host authentication"

Select "ON" or "OFF" to set whether to authenticate hosts or not.

"Host address"

Enter the IP address of the PC to be authenticated.

"Access level"

Select an access level from the following:
Administrator / Camera control / Live viewing

"Administrator": Authorized to operate all functions of the camera

"Camera control": Authorized to monitor the picture and operate on the "Alarm log list" page and the "Control" page. Not authorized to operate on the "Basic setup" page and the "Advanced setup" page.

"Live viewing": Authorized only to monitor the picture. Not authorized to operate the camera.

STEP4

Click the [SET] button after completing the setting.

Click the "Delete Host" [▼] button to check the IP address of the PCs registered in the host authentication. You can delete the selected host by clicking the [DEL] button below. Access level, which is surrounded by "[]", will appear beside the host name registered.

Example: 192.168.0.20 [1]

Access level

[1]: Administrator

[2]: Camera control

[3]: Live viewing

ADVANCED SETTINGS

Settings for the User Authentication

Begin the setting for the user authentication.

You can set a double authentication for the operation of the camera.

One is the host authentication and the other is the user authentication.

The user authentication requires users to enter a user name and a password to access the camera if a PC accessing the camera is not registered for the host authentication.

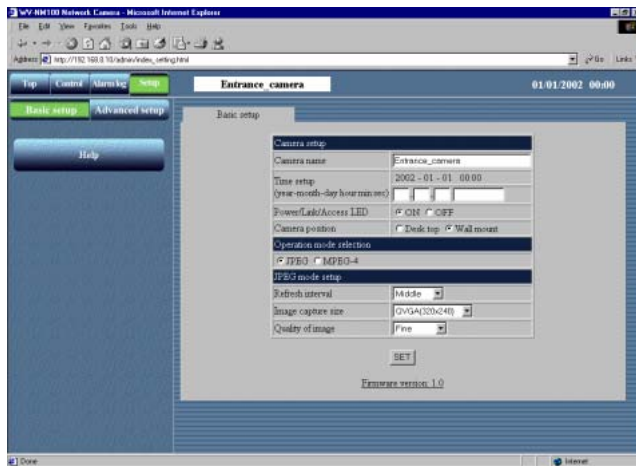
Up to sixteen users can be registered for the user authentication.

The setting of the user authentication is made on the "User authentication" page.

Screenshot 1

Begin the operation from the "Basic setup" page.

Refer to page 24 and 25 to display the "Basic setup" page.

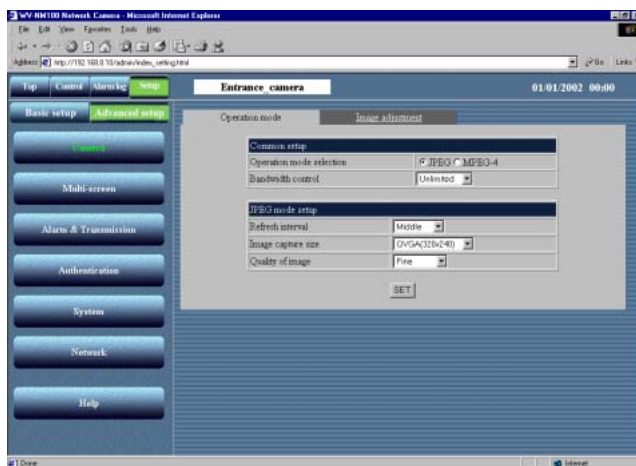


STEP1

Click the [Advanced setup] button.

Screenshot 2

The "Operation mode" page of "Advanced setup" appears.

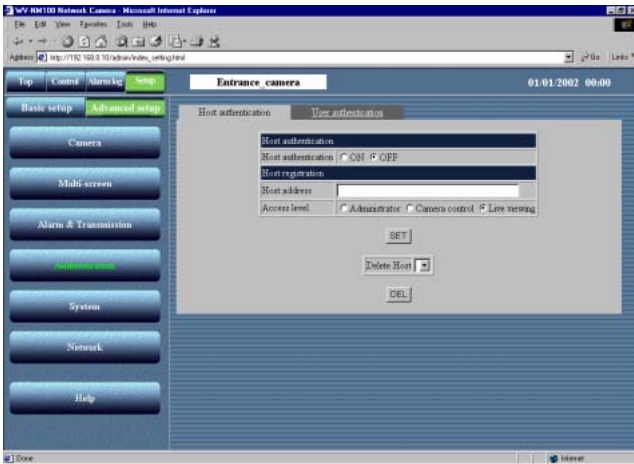


STEP2

Click the [Authentication] button.

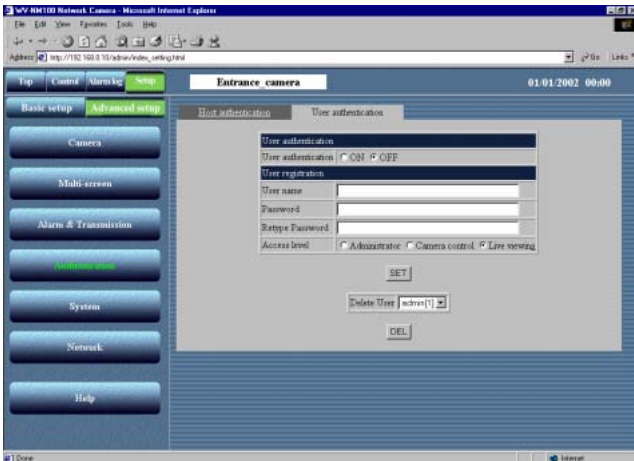
Screenshot 3

The "Host authentication" page appears.



Screenshot 4

The "User authentication" page appears.



STEP3

Click the [User authentication] tab.

STEP4

Begin the setting for the user authentication.

"User authentication"

Select "ON" or "OFF" to set whether to authenticate users or not.

"User name"

Enter a user name of up to 32 characters.

"Password" / "Retype Password"

Enter a password for the user of at least 8 and no more than 32 characters.

"Access level"

Select an access level from the following:

Administrator / Camera control / Live viewing

"Administrator": Authorized to operate all functions of the camera

"Camera control": Authorized to monitor the picture and operate on the "Alarm log list" page and the "Control" page. Not authorized to operate on the "Basic setup" page and the "Advanced setup" page.

"Live viewing": Authorized only to monitor the picture. Not authorized to operate the camera.

STEP5

Click the [SET] button after completing the setting.

Click the "Delete User" [▼] button to check the users registered in the user authentication. You can delete the selected user by clicking the [DEL] button below. Access level, which is surrounded by "[]", will appear beside the user name registered.

Example: admin [1]

Access level

[1]: Administrator

[2]: Camera control

[3]: Live viewing

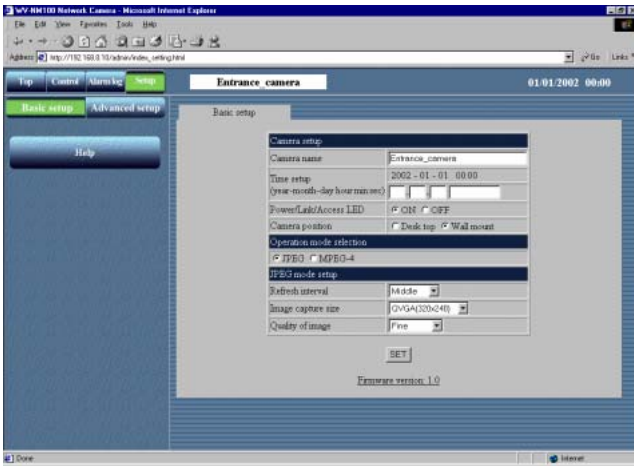
ADVANCED SETTINGS

System Settings

Begin the setting for the system such as date setting, naming the cameras, etc. The setting is made on the "System" page.

Screenshot 1

Begin the operation from the "Basic setup" page. Refer to page 24 and 25 to display the "Basic setup" page.

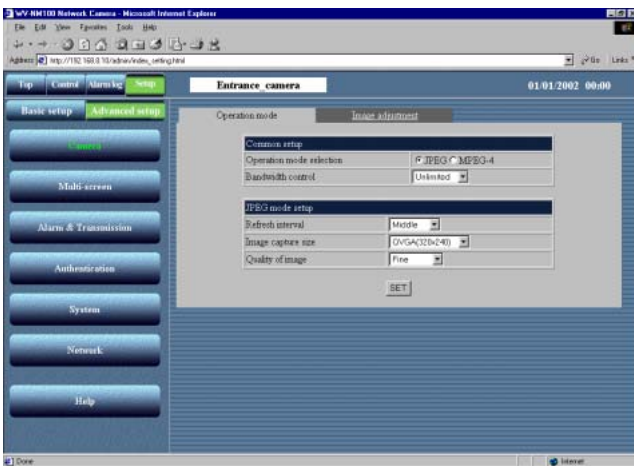


STEP1

Click the [Advanced setup] button.

Screenshot 2

The "Operation mode" page of "Advanced setup" appears.

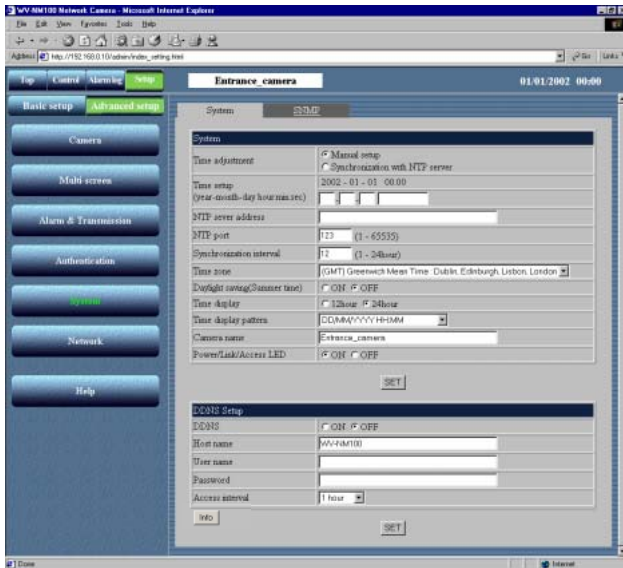


STEP2

Click the [System] button.

Screenshot 3

The "System" page appears.



STEP3

Set the items on the "System" page.
For details about the items, refer below.

STEP4

Click the [SET] button after completing the setting.

Setting items

System

"Time adjustment"

Select a standard for the time adjustment.

Manual setup: Adjust the time manually.

Synchronization with NTP server: Time is adjusted automatically based on the NTP server.

"Time setup (year-month-day hour:min:sec)"

Enter year, month, date, hour, minute, and second if "Manual setup" is selected for "Time adjustment".

Year: Enter 4 digits.

Month and day: Enter 2 digits each.

Hour, minute and second: Enter 2 digits each, and divide by colon (:).

"NTP server address"

Enter the address of the NTP server if "Synchronization with NTP server" is selected for "Time adjustment".

"NTP port"

Enter the port number of the NTP server.

"Synchronization interval"

Enter "1" to "24" hours for the interval time to access to the NTP server for synchronization.

"Time zone"

If using the NTP server, select the time zone according to the location where the camera is installed.

"Daylight saving (Summer time)"

When you select "ON", the currently set time minus one hour will be displayed. When you select "OFF" after "ON" has been selected, one hour will be added to the currently displayed time.

"Time display"

Select "12hour" or "24hour" for time display.

"Time display pattern"

Select the time display pattern.

"Camera name"

Enter a name for the camera. The entered camera name will be displayed when the reload button of the browser is pressed or when the browser starts up the next time.

Characters for "Camera name": Up to 32 characters

"Power / Link / Access LED"

Click the "ON" radio button to use the LED as status display.

Click the "OFF" radio button to turn off the LED all the time.

ADVANCED SETTINGS

DDNS Setup

DDNS (Dynamic Domain Name Service) enables you to access the camera by entering the host name and domain name.

"DDNS"

Select "ON" or "OFF" to set whether or not to use DDNS (Dynamic Domain Name Service). Making a connection to an exclusive server is required for the camera to be serviced.

"Host name"

Enter the host name given by the administrator of the server. Domain name can be omitted.

Characters for "Host name"

Up to 255 characters (ABCDE-FGHIJKLMNOPQRSTU VWXYZabcdefghijklmnopqrstuvwxyz0123456789.-)

Default setting for "Host name": WV-NM100

"User name"

Enter the user name given by the administrator of the server.

Characters for "User name"

Up to 32 characters (ABCDEFGHJKLMNOPQRST UVWXYZabcdefghijklmnopqrstuvwxyz0123456789!#\$%&'=-~|`{ }?<>_^-^/@*.,;+)

Default setting for "User name"

Nothing is entered for this parameter.

"Password"

Enter the password given by the administrator of the server.

Characters for "Password"

1 to 32 characters (ABCDEFGHJKLMNOPQRST UVWXYZabcdefghijklmnopqrstuvwxyz0123456789!#\$%&'()=-~|`{ }<>?_^-^/@*.,;+)

Default setting for "Password"

Nothing is entered for this parameter.

"Access interval"

Select 10 minutes, 30 minutes, 1 hour, 6 hours, or 24 hours for the access interval on DDNS for IP setting.

Default setting for "Access interval": 1 hour

[Info] button

Displays the error information page. You can check the situation of the error occurrence. For further information, refer to page 71.

! Important

- If the setting item is overlapped between "Basic setup" and "Advanced setup", the latest setting has priority. For example, if a different setting is made on the "System" page after the same item has been set on the "Basic setup" page, the setting made on the "System" page is valid.
- When using the DDNS function, select ON for DNS in the "Network" page (refer to page 26), and be sure to set the IP address of the DNS server.

SNMP Settings

Begin the setting for SNMP (Simple Network Management Protocol): community name, equipment name, location, and e-mail address/telephone number.

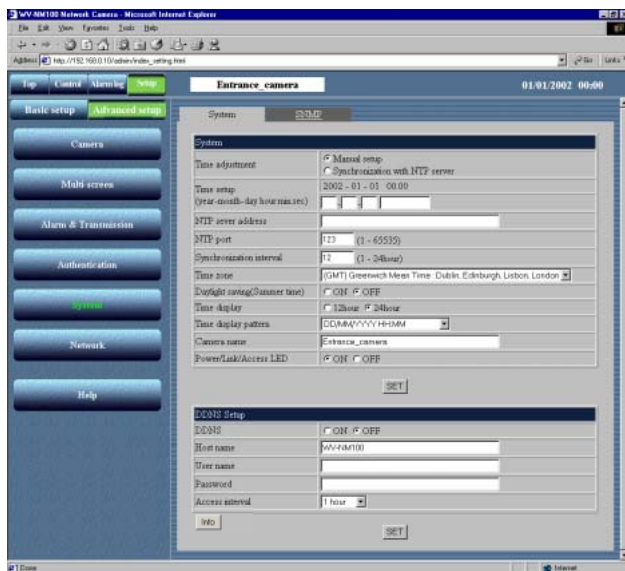
These parameters are required when you connect to the administrative software (SNMP manager).

The setting is made on the "SNMP" page.

Screenshot 1

Begin the operation from the "System" page.

Refer to page 62 and 63 to display the "System" page.

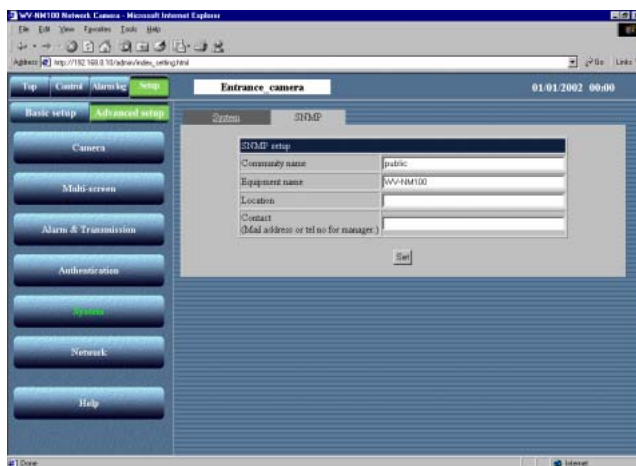


STEP1

Click on the [SNMP] tab on the "System" page.

Screenshot 2

The "SNMP" page appears.



STEP2

Set the items on the "SNMP" page.
For details about the items, refer to the next page.

STEP3

Click the [SET] button after completing the setting.

ADVANCED SETTINGS

Setting items

"Community name"

Enter the name of the community to be monitored. This name must be coincident with the community name of SNMP.

Characters for "Community name"

Up to 32 characters (ABCDEFGHIJKLMNOPQRSTUVWXYZUVWXYZabcdefghijklmnopqrstuvwxyz0123456789!#\$%&'()*~|`{}<>?_^-^[]/@*,,;+)

Default setting for "Community name": public

"Equipment name"

Enter the same name as "Camera name" on the "Basic Setup" page. (Refer to page 31.)

Characters for "Equipment name"

Up to 32 characters (ABCDEFGHIJKLMNOPQRSTUVWXYZUVWXYZabcdefghijklmnopqrstuvwxyz0123456789!#\$%&'()*~|`{}<>?_^-^[]/@*,,;+)

Default setting for "Equipment name"

WV-NM100

"Location"

Enter the name of the location where the camera is installed.

Characters for "Location"

Up to 32 characters (ABCDEFGHIJKLMNOPQRSTUVWXYZUVWXYZabcdefghijklmnopqrstuvwxyz0123456789!#\$%&'()*~|`{}<>?_^-^[]/@*,,;+)

Default setting for "Location"

Nothing is entered for this parameter.

"Contact"

Enter the mail address or telephone number of the administrator of the server.

Characters for "Contact"

Up to 255 characters (ABCDEFGHIJKLMNOPQRSTUVWXYZUVWXYZabcdefghijklmnopqrstuvwxyz0123456789!#\$%&'()*~|`{}<>?_^-^[]/@*,,;+)

Default setting for "Contact"

Nothing is entered for this parameter.

Note

To ensure security, change the default community name "public" on the "SNMP" page regardless of the SNMP is used or not.

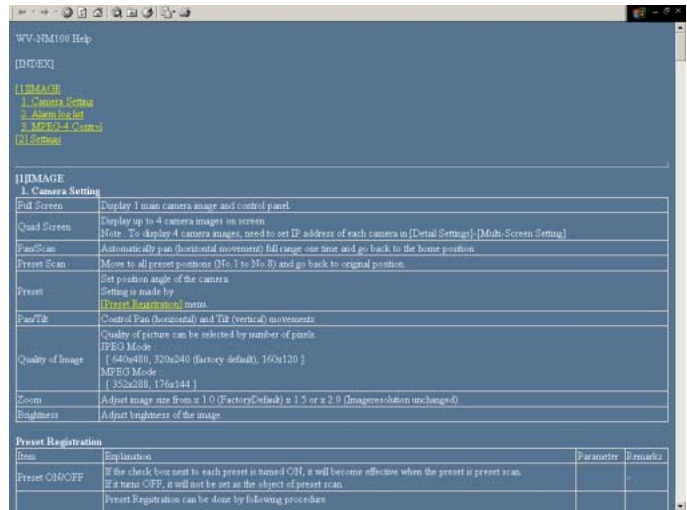
When changing the community name on the "SNMP" page, change also the community name of the SNMP manager to match the newly entered name.

USING "HELP"

You can refer to the "Help" page for details about the items.

The "Help" page below appears by clicking the [Help] button.

You can display an explanation by clicking on the desired item.



FIRMWARE UPGRADE

You can upgrade the firmware of the camera to the latest version.

Refer to the dealer whether the firmware upgrade is available.

Before upgrading the firmware, save the current firmware onto the hard drive of the PC.

STEP1 Start up the browser and enter the following: <http://xxx.yyy.zzz.nnn/admin/upload.html> (xxx.yyy.zzz.nnn is the IP address of the camera.) The "HTML and Firmware upload" page appears.

STEP2 Click the [Browse...] button to select the firmware, and then click the [Upload] button.

STEP3 Click either of the radio buttons to choose whether to initialize or not to initialize the data after uploading.

STEP4 Click the [Upload] button. The screen where you can verify the uploading and data initialization appears. (If the data is not initialized after uploading, the screen where you can verify the progress does not appear but uploading starts.)

STEP5 Click the [OK] button. Update the firmware starts. It will take approx. 5 minutes to complete the uploading. (It will be approx. 2 minutes if there is no initialization. It may take more time for uploading depending on network environments.) The top page of the operation screen automatically appears after completion of uploading.

! Important

- Use a PC in the same subnet where the camera is installed to upload the firmware to the camera.
- When upgrading, confirm that the file name of the firmware is "firmware.img" in small caps.
- It will take around 70 seconds for the next screen to be displayed after the [Upload] button is clicked.
- Do not turn off the power of the camera or detach the Ethernet cable while uploading.
- Do not operate the web browser at all, not even for adjusting the window size.
- The following data related to the network is out of the object to be initialized: IP address, netmask, default gateway, HTTP port, ON/OFF of BOOTP, DHCP and DNS, and primary and secondary addresses of DNS.

TROUBLESHOOTING

Before asking for repairs, please check the following symptoms.

If the solutions below do not solve the problem or the symptom is not listed below, ask at the shop where you purchased the camera.

Symptom	Possible cause / Possible solution	Reference page
Power is not supplied.	<ul style="list-style-type: none"> Is the provided AC adapter connected to the DC power input connector on the rear of the camera? * Confirm that the AC adapter is firmly plugged in. 	10
	<ul style="list-style-type: none"> Is the AC adapter firmly plugged into the outlet? 	–
Cannot access from the browser.	<ul style="list-style-type: none"> Is the category 5 cable connected to the Ethernet connector inside the cord cover of the camera? 	10
	<ul style="list-style-type: none"> Is the link LED next to the Ethernet connector lit? If the link LED is not lit, it is possible that the connection to the LAN or the network has not been made correctly. Confirm that the cable connection is correct and firm. 	10
	<ul style="list-style-type: none"> Is the valid IP address set for the camera? 	16
	<ul style="list-style-type: none"> Are you connecting to the wrong IP address? Confirm the connection as follows: Open the command prompt on your PC and enter: > ping (enter here the IP address set for the NM100) If the NM100 replies, the camera is functioning normally. If not, turn off the power of the NM100 once, and proceed as follows: (1) Change the IP address by using the "Panasonic IP Setup" software. (2) Initialize the camera by pressing the setting reset switch at the rear of the camera. The IP address will return to the default setting "192.168.0.10". 	10, 16, 17

Symptom	Possible cause / Possible solution	Reference page
Cannot access from the browser	<ul style="list-style-type: none"> • Is the same IP address assigned to other devices? Are there contradictions between the address and the network subnet to be accessed? If the camera and the PC are connected in the same subnet Is the IP address of the camera and the PC set in a common subnet? Is "Use Proxy Server" for the setting of the browser selected? When accessing a camera in the same subnet, entering the address of the camera in the "Don't Use Proxy For These Addresses" box is recommended. If the camera and the PC are connected in a different subnet Is the IP address of the default gateway set for the camera correct? 	-
The picture is not displayed.	<ul style="list-style-type: none"> • Is the camera's power ON? 	10
The picture is not refreshed.	<ul style="list-style-type: none"> • Depending on the version of your browser, there might be difficulties refreshing the picture and operating the camera. Using Netscape Communicator 4.73, 4.78, or Internet Explorer 5.5, 5.5SP2, 6.0 is recommended. 	8
	<ul style="list-style-type: none"> • Depending on the traffic of the network or the concentration of access to the camera, there might be difficulties displaying the camera picture. Click the reload button of the browser to request the camera picture to be refreshed. 	-
The HTML documents are not displayed.	<ul style="list-style-type: none"> • The HTML files in the camera might be broken. Refer to page 10 for the initialization of the files by pressing the HTML document initialization switch. 	10

TROUBLESHOOTING

Symptom	Possible cause / Possible solution	Reference page
The live picture is not renewed / the alarm picture is not renewed.	<ul style="list-style-type: none"> Since the data has been recalled from the cache of the PC, the picture might not have been requested to the camera. If this symptom occurs frequently, it is recommended to set the browser as follows. If Netscape Communicator is used Set the memory cache and the disk cache to 0 Kbytes in the [Advanced Cache] category of the [Preferences] menu. Also, check "Every time" for "Document in cache is composed to document on network" in the [Cache] menu ([Preferences] – [Advance] – [Cache]). If Internet Explorer is used Select "Every visit to the page" for "Check for newer versions of stored pages" in "Temporary Internet Files" of "Internet Options". 	–
The power LED is blinking.	The camera is being accessed. The LED keeps on blinking for around 2 minutes even after access is terminated. In MPEG-4 Multicast mode, the LED keeps on blinking. This is not a malfunction.	11

Inspect the power cord and the plug of the AC adapter occasionally.

Symptom	Possible cause / Possible solution
The power cord insulation is damaged.	<ul style="list-style-type: none"> The power cord or the plug is damaged. If you continue to use it, a fire or an electric shock may occur. Unplug the AC adapter immediately, and refer servicing to qualified service personnel.
The power cord and the power plug of the AC adapter are hot during use.	
The power cord gets warm or hot if bent or pulled during use.	

ERROR MESSAGE LIST

SMTP		
Category	Error Message	Possible cause / Possible solution
POP3 server error	Authentication error (POP3)	Entered user name and/or password might be incorrect. Check the mail settings.
	Cannot connect to POP3 server	<ul style="list-style-type: none"> The IP address of the POP3 server might be incorrect. The POP3 server might be down. Refer to your network administrator.
SMTP server error	Authentication error (SMTP)	Entered user name and/or password might be incorrect. Check the mail settings.
	Connection error to DNS server (Cannot resolve server name)	<ul style="list-style-type: none"> The entered name for the DNS server might be incorrect. Check the DNS settings. The DNS server might be down. Refer to your network administrator.
	Cannot connect to SMTP server	<ul style="list-style-type: none"> The IP address of the SMTP server might be incorrect. The SMTP server might be down. Refer to your network administrator.
Connection error	MAIL FROM command error	The entered sender mail address might be incorrect. Check the mail settings.
	RCPT TO command error	The entered recipient mail address might be incorrect. Check the mail settings.
Internal error	Undefined error	The mail function might have problems. Check the mail settings.
FTP		
FTP server error	Connection error to DNS server (Cannot resolve server name)	<ul style="list-style-type: none"> The entered name for the DNS server might be incorrect. Check the DNS settings. The DNS server might be down. Refer to your network administrator.
	Cannot connect to FTP server	<ul style="list-style-type: none"> The IP address of the FTP server might be incorrect. The FTP server might be down. Refer to your network administrator.
	Connection error occurred on FTP server	A connection error might have occurred on the FTP server side.
Connection error	File transfer error	File transfer might have failed. Check the network connection status.
	Passive mode error	During FTP transfer an error might have occurred. Check the FTP client settings.
	Log out failed	An error might have occurred during the connection with the server. Refer to the administrator of the server.
	Directory change failed	The directory path might be incorrect. Check the FTP client settings.
	User name or password isn't correct	Entered user name and/or password might be incorrect. Check the FTP client settings.
Internal error	Undefined error	A problem might have occurred in the FTP function. Check the FTP client settings.

TROUBLESHOOTING

DDNS		
Connection error	Cannot connect to DDNS server	<ul style="list-style-type: none">• The IP address of the DDNS server might be incorrect.• The DDNS server might be down. Refer to the administrator of the server.
	User name or password isn't correct	Entered user name and/or password might be incorrect. Check the DDNS configuration.
	IP address update failed	DDNS settings might be incorrect. Check the DDNS configuration.
Internal error	Undefined error	A problem might have occurred in the DDNS function. Check the DDNS configuration.

SPECIFICATIONS

●Camera

Effective Pixels	660 (H) x 492 (V)
Lens	F2.35 Horizontal Angular field of view: 51° Focal length: 50 cm ~ ∞
Minimum Illumination	10 lx (1 foot-candle) (30 fps, Slow shutter: OFF) 2 lx (0.2 foot-candle) (Sensitivity up: 10 is selected)
Panning range	140° (-70° - +70°)
Tilting range	120° (-90° - +30°) when mounted on the wall
Pan / Tilt Preset Positions	8 positions

●Other Specifications

Power Source	9V DC, 330mA (using the supplied AC adapter)
Power Source (Supplied AC adapter)	230V AC, 50Hz, 200mA
Ambient Operating Temperature	0° C - +40° C (32°F - 104°F)
Ambient Operating Humidity	Less than 90% (no condensation)
Compression Methods	JPEG or MPEG-4
Resolution	JPEG: VGA (640 x 480) / QVGA (320 x 240) / QQVGA (160 x 120) MPEG-4: CIF (352 x 288) / QCIF (176 x 144)
Picture Quality	JPEG: Super Fine / Fine / Normal / Low MPEG-4: Fine / Normal / Low
Picture Display Size	x1.0 / x1.5 / x2.0 (resolution does not change)
Interface	10Base-T / 100Base-TX port (RJ-45) x1
Alarm Input	OFF: Open or 4 V DC – 5 V DC ON: Make contact with GND
Alarm Output	Collector output (Internal pull-up) OFF: Open or 5V DC or less ON: 50 mA or less, 1 V DC or less
AUX Output	Collector output (Internal pull-up) OFF: Open or 5V DC or less ON: 50 mA or less, 1 V DC or less
Weight	Approx. 180 g (0.4 lbs.) (AC adapter excluded)
Dimensions	95 mm (H) x 93 mm (W) x 61.5 mm (D) [3.74 in. (H) x 3.66 in. (W) x 2.42 in. (D)] (Wall-mounting bracket excluded)

STANDARD ACCESSORIES

AC Adapter (Part No. NOJCEF000002 : for U.K. NOJCEF000001 : for outside U.K.) .. 1 pc.	Cord cover fixing screws 2 pcs.
CD-ROM 1 pc.	Label (on which the password for the MPEG-4 plug-in installer is written) 1 pc.
Quick Reference Guide 1 pc.	Label (on which the MAC address is written) 1 pc.
Screw 2 pcs.	
Wall-mounting Bracket 1 pc.	

GLOSSARY OF TERMS

Term	Explanation
Cross Cable	The Ethernet cable designed to directly connect one PC to another PC without using Ethernet hubs or routers.
DDNS (Dynamic Domain Name Service)	The service which assigns the fixed domain name to the dynamic global IP addresses on the Internet. For example, when an IP address is given by the DHCP server, the IP address is replaced by a new one with every access on the network. This may cause user's having the difficulty in remote access. DDNS reconfigures the linkage between the host name and the IP address so that users can access with the fixed domain name.
Default Gateway	Hardware such as a PC or a router, which is the gateway, to access a PC outside the network.
DHCP (Dynamic Host Configuration Protocol)	DHCP automatically assigns IP addresses to clients on a network. The DHCP server manages information such as IP addresses, gateway addresses, domain names, subnet masks, and assigns IP addresses to clients.
DNS (Domain Name System)	This system links domain names to IP addresses on the Internet. Since it is difficult to remember IP addresses consisting of a long string of numbers, DNS translates domain names consisting of alphanumeric characters into IP addresses.
Download	Transferring data from a remote computer to the local computer.
Ethernet	A communication medium for LAN, which was developed by Xerox Corporation.
Ethernet Switching Hub	A concentrator device used in a 10Base-T or 100Base-TX network. There are several types with various numbers of ports: 8 ports, 4 ports, etc.
Frame Rate	The number of frames per second displayed during playback.
FTP (File Transfer Protocol)	The protocol used to transfer files over TCP/ IP networks such as the Internet or an intranet. This protocol is used as frequently as HTTP and SMTP / POP3 on the Internet.
Installation	Adding hardware or software to the system. This is the term used to indicate when an expansion card is added to the hardware or new software is added to the system.
IP Address	The address information used in IP protocol. Every piece of hardware on a network such as the Internet or an intranet must be assigned a unique address.
JPEG (Joint Photographic Experts Group)	The standard file format for color still images defined by ITU-TS (International Telecommunication Union-Telecommunication Sector: former CCITT) and ISO (International Organization for Standardization). Compressibility ratio is 1/10 to 1/100.
LAN (Local Area Network)	A network of a comparatively small area such as the same floor, the same building, or the same campus.

Term	Explanation
MAC Address (Media Access Control Address)	Unique code assigned to network interface cards. Transmission and reception of data is made via the Ethernet using this unique address.
Netmask	Refer to "Subnet Mask".
Post-Alarm	VMD after an alarm is detected.
Pre-Alarm	VMD before an alarm is detected.
Proxy Server	The server used to improve the performance between networks by diminishing unnecessary traffic caused by caching, or strengthening the security between the PC and the Internet.
Router	The device used to relay data on one network to another network. Routers use IP addresses to determine where data should go.
SMTP (Simple Mail Transfer Protocol)	The protocol used to send e-mails on the Internet or an intranet. This protocol controls the exchange of e-mails between two mail servers, or is used when clients send e-mails to the server.
SNMP (Simple Network Management Protocol)	The protocol used to monitor devices connected to TCP/IP networks such as the Internet or an intranet. The SNMP manager is used to monitor the status of an Ethernet switching hub/router and the traffic of the network.
Straight Cable	The cable designed for 10Base-T / 100Base-TX and used to connect a PC to an Ethernet hub.
Subnet Mask	An IP address has two components: the network address and the host address. The subnet mask is used to determine what subnet an IP address belongs to.
TCP / IP (Transmission Control Protocol / Internet Protocol)	The basic protocol on the Internet, and currently the most common protocol. This network protocol was developed by the network project financially supported by the U.S. Department Of Defense.
Web Browser	Software to browse the web. Most commonly used browsers are Internet Explorer of Microsoft or Netscape Communicator of Netscape Communications Corporation, etc.
xDSL Modem	The device used for high-speed digital data transmission over the phone line. xDSL is the generic name for technologies such as ADSL, RADSL, HDSL, and VDSL.

Matsushita Electric Industrial Co., Ltd.

Web Site : <http://www.panasonic.co.jp/global/>

Free Manuals Download Website

<http://myh66.com>

<http://usermanuals.us>

<http://www.somanuals.com>

<http://www.4manuals.cc>

<http://www.manual-lib.com>

<http://www.404manual.com>

<http://www.luxmanual.com>

<http://aubethermostatmanual.com>

Golf course search by state

<http://golfingnear.com>

Email search by domain

<http://emailbydomain.com>

Auto manuals search

<http://auto.somanuals.com>

TV manuals search

<http://tv.somanuals.com>