

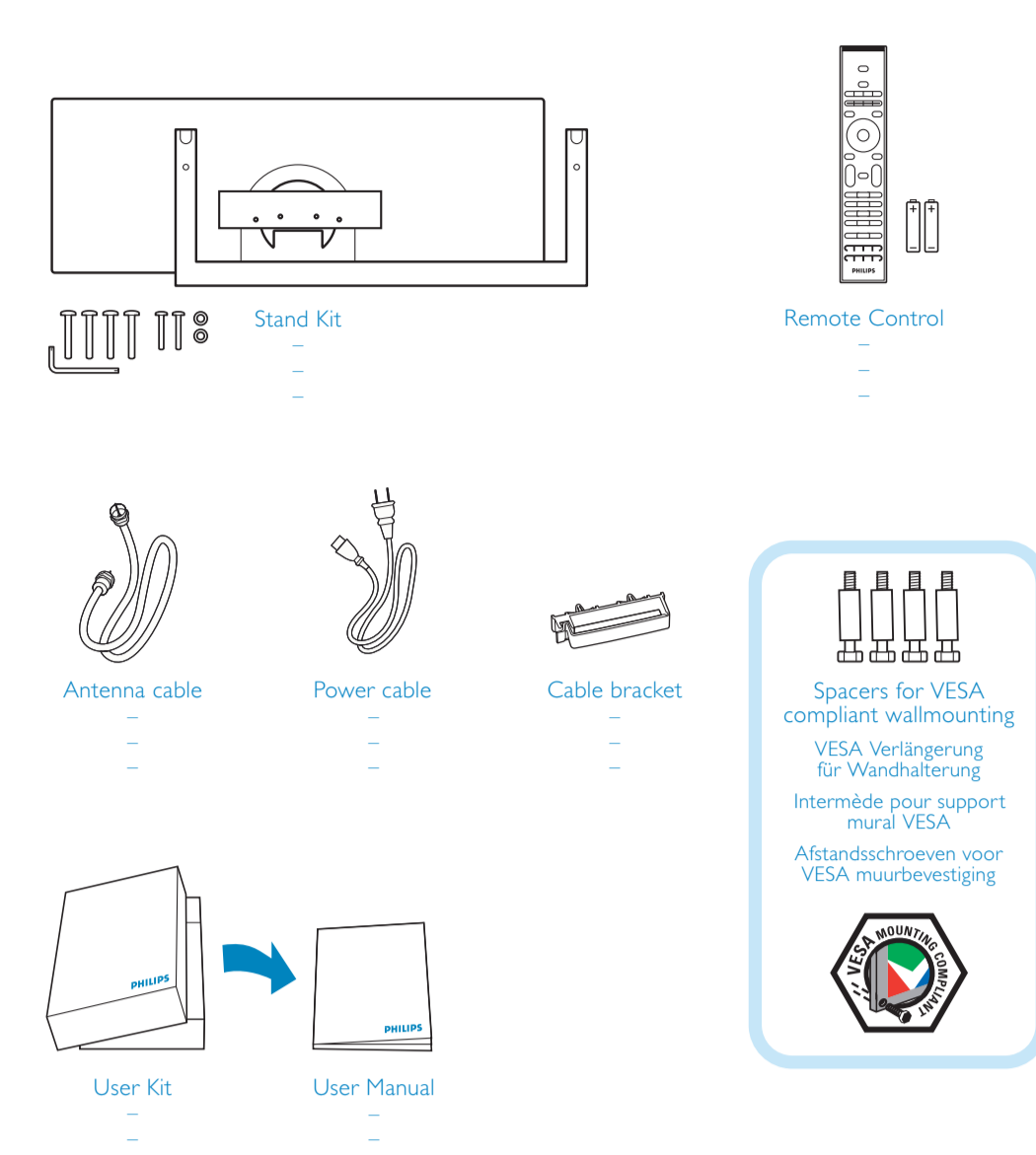
# Start

- 1 Installation
- 2 Power & antenna
- 3 How to make the best connection
- 4 The remote control
- 5 Switch on

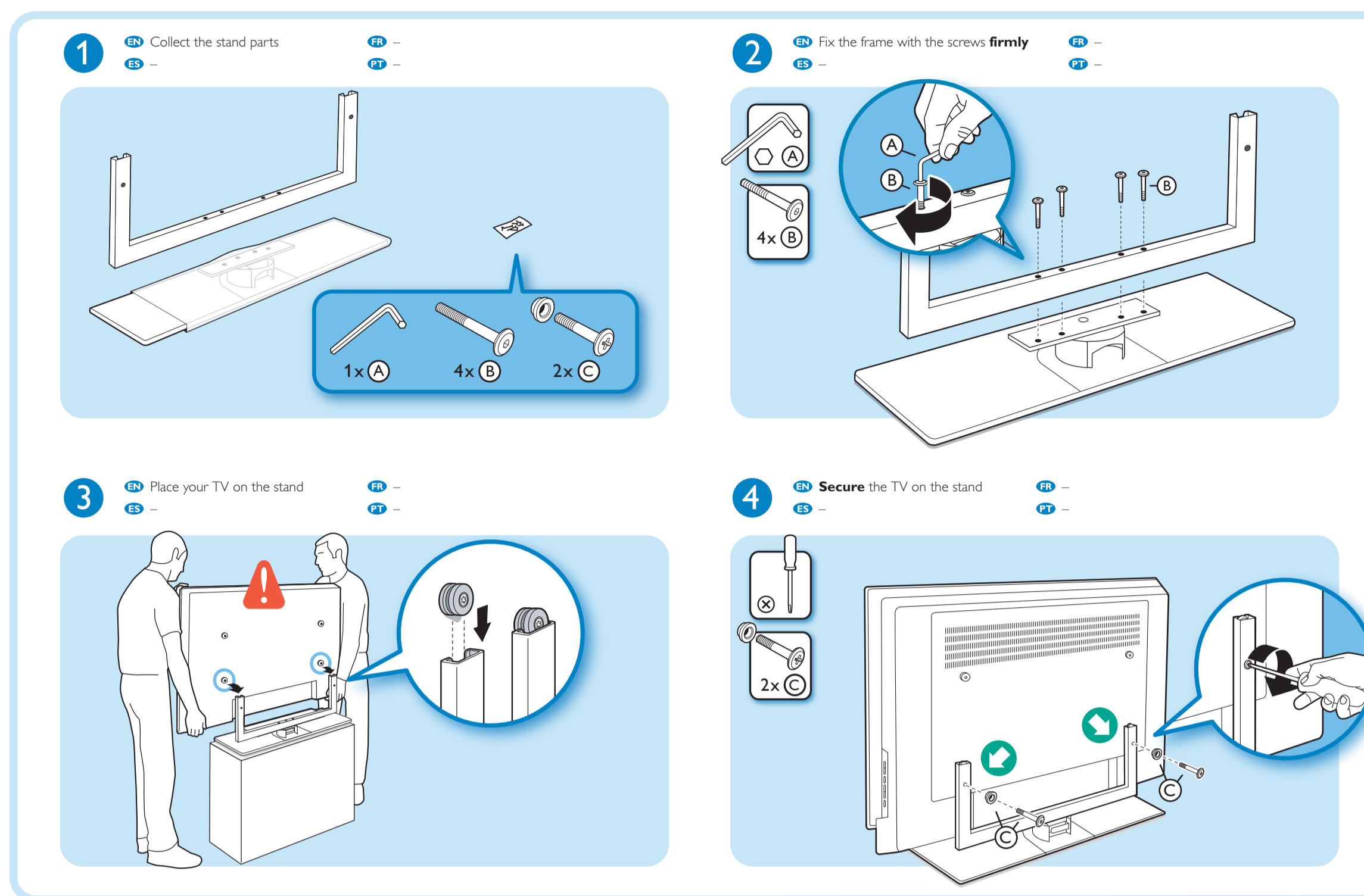
You must get HD programming to get an HD picture!

## PHILIPS

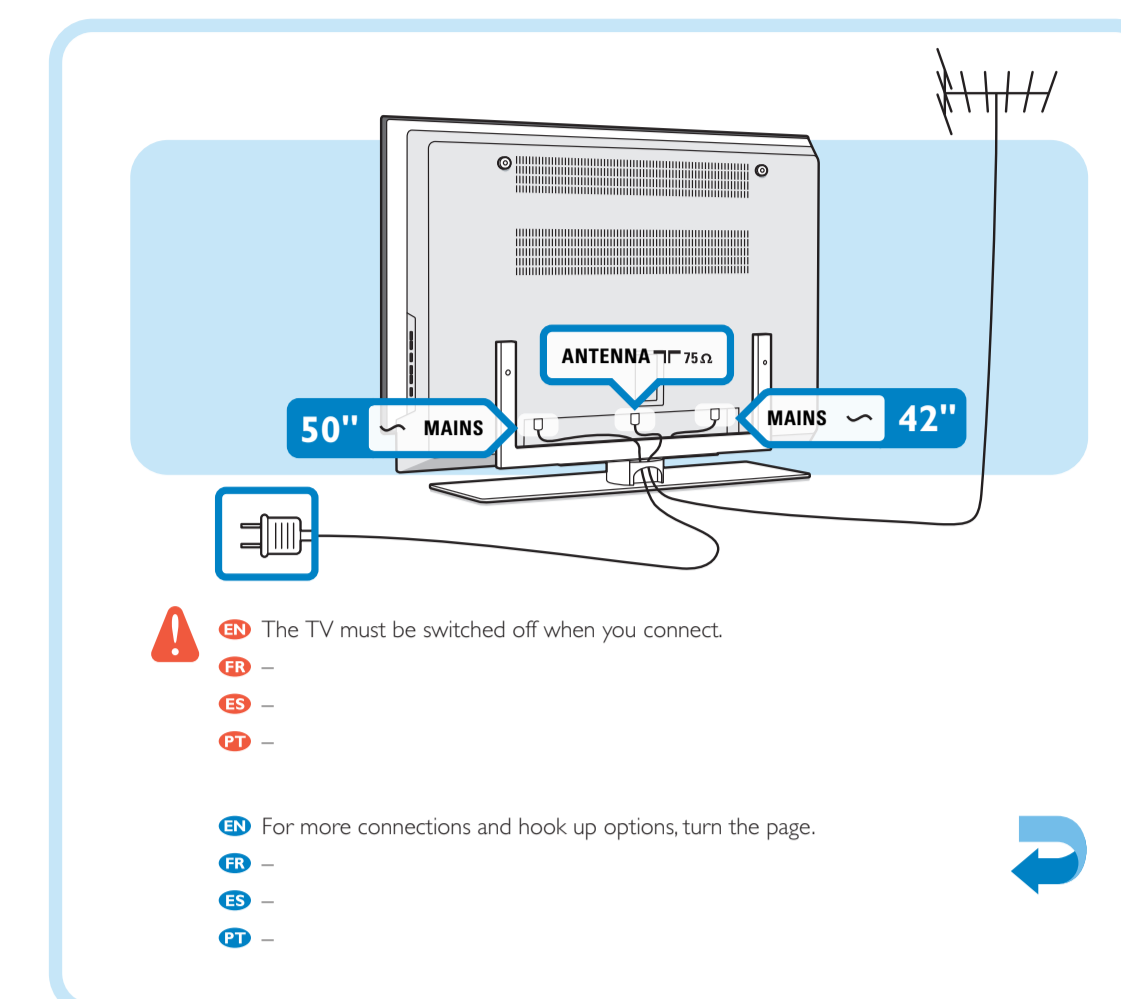
## What's in the box



## 1 Mount the stand



## 2 Power & antenna



## Need help?

**User Manual**  
See the User Manual in the User Kit that came with your TV.

**Online help**  
USA: [www.philips.com/support](http://www.philips.com/support)  
Outside USA: [www.philips.com/support](http://www.philips.com/support)

**Contact line**

**USA**  
1 888 Philips (744 5477)  
301-501-2945 (Toll Free)  
7 days a week, except public holidays.

**Canada**  
1 800 363 2778 (English)  
1 800 461 6162 (French)

**France**  
Please see the Model and Serial Number note before you call.  
You can find these numbers on the packaging label or on the back and bottom of your TV.

**Manual del usuario**  
Consulte el manual del usuario en el kit de usuario incluido con el televisor.

**Ayuda en línea**  
[www.philips.com/support](http://www.philips.com/support)

**Línea de contacto**  
1 85442047 (Argentina)

**Manual do usuário**  
Consulte o Manual do Usuário do Kit do Usuário fornecido com o seu televisor.

**Ayuda on-line**  
[www.philips.com/support](http://www.philips.com/support)

**Teléfono de contacto**  
55 800 701 02 03 (Brasil)

**Terminó y Modelos y el Número de serie y más**  
Puede encontrar estos números en la etiqueta de empaque o en la parte posterior e inferior del televisor.

## How to receive HDTV

This High Definition TV (HDTV) gives you the best picture. Digital TV (DTV) picture and sound quality are many times better than today's analog TV's. High Definition Television uses digital Standard Definition (SD) or Enhanced Definition (ED).

**When buying a High Definition TV you must get HD programming to get a HD picture. The picture quality of a HDTV without a HD source is just ordinary TV.**

Call your local Cable or Satellite Provider to order HDTV Programming - the best way to get the full HD movie theater experience in your home. (Additional equipment and subscription fees may apply.) You'll have a variety of dedicated HD channels to choose from.

You have 3 options to receive HD programming:

- Digital Satellite HDTV programming**  
To receive HD programming via satellite, you need an HD satellite receiver and satellite dish. Contact your Satellite TV provider for more information on HDTV service.
- Cable**  
Subscribe to HDTV programming through your local cable company. You will need a HDTV cable box from them. The cable provider may install the cable and satellite box for you. They require certain fees and installation requirements. Please call your cable company for more information.
- Free Over-the-Air (OTA) Mission digital HDTV programming**  
This integrated HDTV has the digital tuner built into the TV set. It does not need a separate set-top box to receive Free Over-the-Air digital TV signals (ATSC), since you can receive HD signals via antenna. For help choosing the right antenna, log onto [www.fcc.gov/consumers](http://www.fcc.gov/consumers) for more information.

## Wallmounting

**Support mural**

**VESA compliant wallmounting**  
Your TV is compliant for VESA compliant wallmounting. The bracket must include One a VESA compliant bracket and a VESA MIS-F 400, 200, 8 x 160 or 400, 200, 8 x 160. Consult your dealer for more information.

**VESA**

**1 VESA MIS-F, 600, 200, 8 - 50"**  
**VESA MIS-F, 800, 400, 6 - 42"**

1. Mark the 4 VESA screws on the back of the TV.  
2. Place the 4 screws and power cable in step 2 in the space between the VESA bracket and the TV backdoor. This will create space for your cables.

2. Attach your TV with a VESA bracket.  
Please use a minimum 2 cm (3/4") gap between the VESA bracket and the TV frame. Please use the correct size of the mounting plate.

## Register

Return your Warranty Registration Card today or register on [www.philips.com](http://www.philips.com)

## 3 How to make the best connection

The TV must be switched off when you connect.

### DVD Recorder / Player

**Other possible connections**

- Composite Video/Audio
- See VCR

### Cable or Satellite set top box

**Other possible connections**

- Composite Video/Audio
- See VCR

### VCR

**Other possible connections**

- Antenna/Cable
- See Cable or Satellite set top box

### Memory Card / USB

### Headphones / Camera / Games

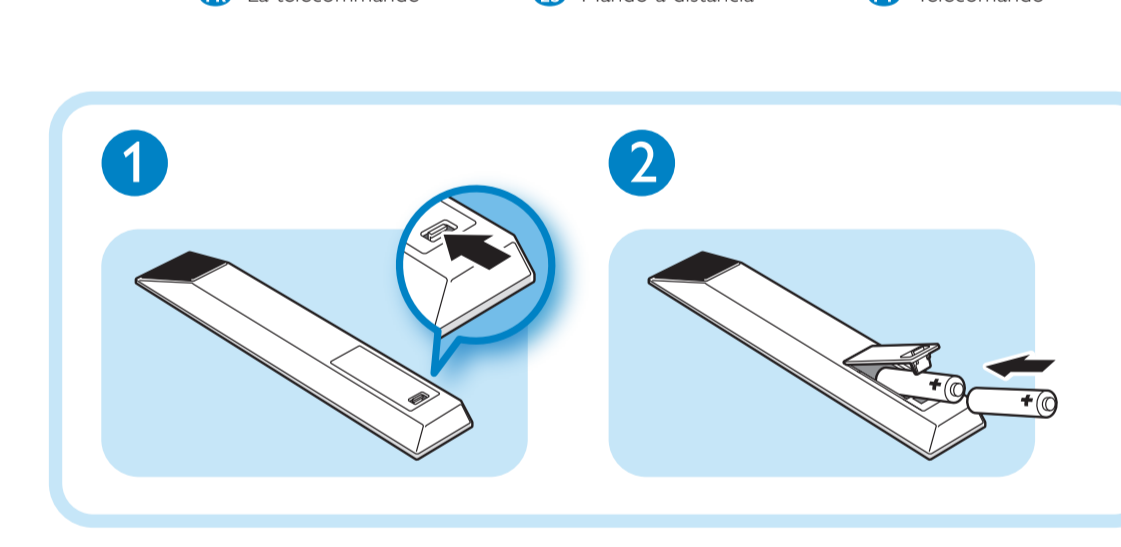
**Fix your cables**

### Best connectivity

Cables are not provided with this TV set.

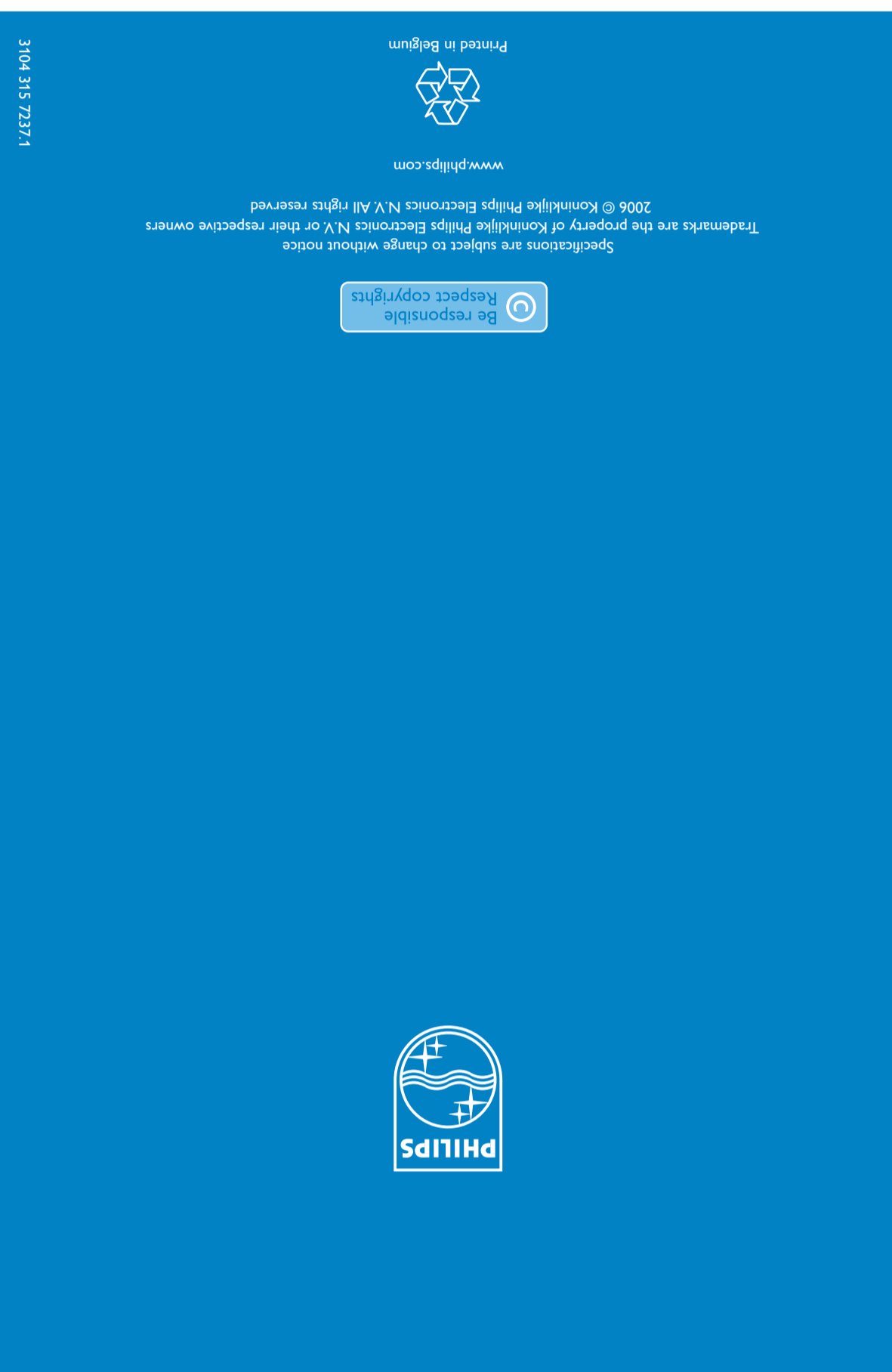
<b>HDMI (DVI)</b> Best quality connection HDMI provides an uncompromised, all-digital audio and video connection.	<b>Conexión óptima</b>	<b>Conexión de máxima calidad</b>	<b>Melhor qualidade da ligação</b>
<b>S-Video</b> Good quality connection Supplies a better picture than RF and Composite connections. Used with red & white audio cables.	<b>Bonne qualité de connexion</b>	<b>Conexión de calidad buena</b>	<b>Boa qualidade da ligação</b>
<b>Composite Audio/Video</b> Basic connection Separates video (red) and audio (red & white) cables that provide basic connection.			
<b>Traditional Antenna / Cable RF</b> Basic connection Provides a basic connection for normal antenna or cable.	<b>Bonne qualité de connexion</b>	<b>Conexión de calidad buena</b>	<b>Boa qualidade da ligação</b>
<b>Digital Antenna / Cable RF</b> Provides best quality for HDTV broadcast with antenna connection.			

## 4 The remote control



## 5 Switch on

- Press the power switch **POWER** on the left of the TV.
- Use the cursor up/down to select your choice in the menu on screen.
- Use the colour keys to proceed.
- Follow the instructions on screen to proceed with the TV installation. Your TV will automatically search and install all available TV channels. The settings support will help you to set your personal TV preferences. You will find more information in the User Manual.



## Free Manuals Download Website

<http://myh66.com>

<http://usermanuals.us>

<http://www.somanuals.com>

<http://www.4manuals.cc>

<http://www.manual-lib.com>

<http://www.404manual.com>

<http://www.luxmanual.com>

<http://aubethermostatmanual.com>

Golf course search by state

<http://golfingnear.com>

Email search by domain

<http://emailbydomain.com>

Auto manuals search

<http://auto.somanuals.com>

TV manuals search

<http://tv.somanuals.com>