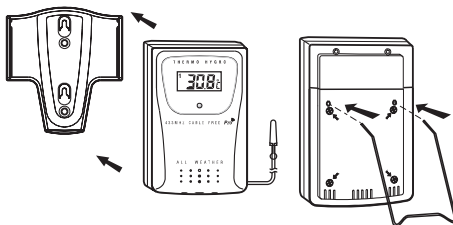
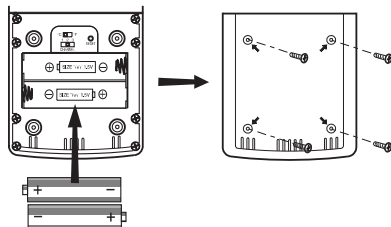
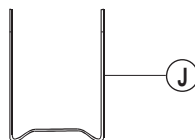
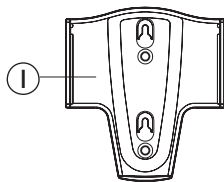
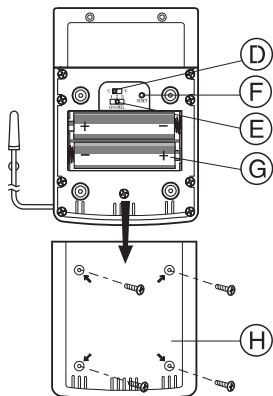
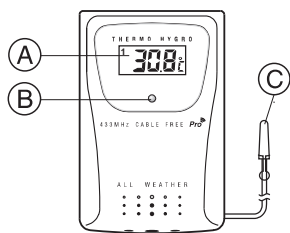


**MULTI-CHANNEL  
CABLE FREE  
REMOTE THERMO SENSOR**

**MODEL: THC268**



**ENGLISH**

**USE'S MANUAL**

**INTRODUCTION**

Congratulations on your purchasing the THC-268 Remote Thermo Sensor. The Remote Thermo Sensor is used with the Oregon Scientific 433MHz Multi-Channel In-Out Thermometers, Wireless Weather Stations, Weather Clocks etc. to monitor temperature changes of remote or outdoor sites. Operation is easy and no wire installation is required.

**MAIN FEATURES:**

- A LCD**  
Displays the current temperature monitored by the remote unit and indicates the selected channel
- B LED INDICATOR**  
Flashes when the remote unit transmits a reading
- C TEMPERATURE SENSOR PROBE**  
On 10 feet ( 3 meters ) cable.
- D °C/°F SLIDE SWITCH**  
Selects between Centigrade ( °C ) and Fahrenheit ( °F )
- E CHANNEL SLIDE SWITCH**  
Designates the remote unit Channel 1, Channel 2 or Channel 3
- F RESET BUTTON**  
Returns all settings to default values
- G BATTERY COMPARTMENT**  
Accommodates two AA-size batteries
- H BATTERY DOOR**
- I WALL-MOUNT HOLDER**  
Supports the remote unit in wall-mounting
- J REMOVABLE TABLE STAND**  
For standing the remote unit on a flat surface

**COMPATIBLE PRODUCTS**

Following is the list of some Oregon Scientific products that the THC268 is compatible with:

- Cable Free Weather Forecaster with Thermo-Hygrometer and Radio Controlled Clock: BAR122HGA
- Cable Free Weather Forecaster with Thermo-Hygrometer, Radio Controlled Clock and Ice Alarm: BAR913HGA
- Cable Free Weather Station with Thermo-Hygrometer and Radio Controlled Clock: BAR938HGA
- Cable Free Thermo-Hygrometer: EMR963HG
- Cable Free Thermometer with Radio Controlled Clock: RMR112
- Cable Free Weather station: WMR968
- Cable Free Weather station: WMR112

**BEFORE YOU BEGIN**

- For best operation,
1. Assign different channels to different remote units.
  2. Insert batteries for remote units before doing so for the main unit. ( Main unit of models listed under optional items )
  3. Place the main unit as close as possible next to the remote unit, reset the main unit after installing batteries. This will ensure easier synchronization between the transmission and reception of signals.
  4. Position the remote unit and main unit within effective transmission range, which, in usual circumstances, is 20 to 30 meters (upto 100 feet). Note that the effective range is vastly affected by the building materials and where the main and remote units are positioned. Try various setups for best result. Though the sensor is weather proof and meant to be used outdoors, it should be placed away from direct sunlight, rain or snow.

**BATTERY AND CHANNEL INSTALLATION**

- The remote unit uses two AA-size batteries. To install them,
1. Remove the screws on the battery compartment.
  2. Select the channel number on the CHANNEL slide switch.
  3. Select the temperature display unit on the °C/°F slide switch.
  4. Insert the batteries strictly according to the polarities shown inside.
  5. Replace the battery compartment door and secure its screws.

**CHANGE CHANNEL**

Once a channel is assigned to a unit, you can only change it by removing the batteries and repeating the above procedure.

**LOW-BATTERY WARNING**

Replace the batteries of the sensor when the low-battery indicator of the channel represented by the sensor shows up on the main unit.

**OPERATION**

Once batteries are in place, the sensor will start transmitting samplings at 40-second intervals. The current temperature will be shown on the LCD in the selected unit (°C/°F) at the designated channel. The unit (°C/°F) shown on the main unit is determined by the setting on the main unit.

**HOW TO INSTALL THE TEMPERATURE SENSING CABLE**

Secure the sensor to an area you want to monitor. Do not expose it to direct sunlight.

**THE RESET BUTTON**

See the user's manual of your main unit for further information. This button is only used when the unit is operation in an unfavorable way or malfunctioning. Use a blunt stylus to hold down the button. All settings will return to their default values.

**HOW TO USE THE TABLE STAND OR WALL MOUNTING**

This sensor comes with a wall-mount holder and a removable stand. Use either to set up the unit.

**PRECAUTIONS**

- This product is engineered to give you years of satisfactory service if you handle it carefully. Here are a few precautions:
1. Do not immerse the unit in water.
  2. Do not clean the unit with abrasive or corrosive materials. They may scratch the plastic parts and corrode the electronic circuit.
  3. Do not subject the unit to excessive force, shock, dust, temperature or humidity, which may result in malfunction, shorter electronic life span, damaged battery and distorted parts.
  4. Do not tamper with the unit's internal components. Doing so will invalidate the warranty on the unit and may cause unnecessary damage. The unit contains no user-serviceable parts.
  5. Only use fresh batteries as specified in the user's manual. Do not mix new and old batteries as the old ones may leak.
  6. Always read the user's manual thoroughly before operating the unit.

**SPECIFICATIONS**

<b>Temperature Measurement</b>	
Displayed range	: -50.0°C to + 70.0°C ( -58.0°F to 158.0°F )
Proposed operating range	: -20.0°C to + 60.0°C ( 4.0°F to 140.0°F )
Temperature resolution	: 0.1°C ( 0.2°F )
RF Transmission Frequency	: 433 MHz
No. of Remote unit	: Maximum of 3
RF Transmission Range	: Maximum 30 meters (100 feet)
Temperature sensing cycle	: around 40 seconds
<b>Power</b>	: use 2 pcs UM-3 or "AA" 1.5V alkaline battery
<b>Weight</b>	: 80.5 g (2.84ounces)
<b>Dimension</b>	: 105 x 70 x 21mm (4.13 x 2.76 x .83 inches)

**NOTE ON COMPLIANCE**

This device complies with Part 15 of the FCC Rules. Operation is subject to the following two conditions: (1) This device may not cause harmful interference, and (2) This device must accept any interference received, including interference that may cause undesired operations.

**Warning:** Changes or modifications to this unit not expressly approved by the party responsible for compliance could void the user's authority to operate the equipment.

**FCC :**

**NOTE:** This equipment has been tested and found to comply with the limits for a Class B digital device, pursuant to Part 15 of the FCC Rules. These limits are designed to provide reasonable protection against harmful interference in a residential installation. This equipment generates, uses and can radiate radio frequency energy and, if not installed and used in accordance with the instructions, may cause harmful interference to radio communications.

However, there is no guarantee that interference will not occur in a particular installation. If this equipment does cause harmful interference to radio or television reception, which can be determined by turning the equipment off and on, the user is encouraged to try to correct the interference by one or more of the following measures:

- orient or relocate the receiving antenna.
- Increase the separation between the equipment and receiver.
- Connect the equipment into an outlet on a circuit different from that to which the receiver is connected.
- Consult the dealer of an experienced radio/TV technician for help.

**Company Name:** Oregon Scientific, Inc.  
**Address:** 19861 SW 95th Place, Tualatin, Oregon 97062, USA  
**Telephone Number:** 1-800-853-8883

**CUSTOMER ASSISTANCE**

Should you require assistance regarding this product and its operation, please contact our customer care department at 800-853-8883 or via email at helpme@oscientific.com.

**CAUTION**

- The content of this manual is subject to change without further notice.
- Due to printing limitation, the displays shown in this manual may differ from the actual display.
- The contents of this manual may not be reproduced without the permission of the manufacturer.

**WARRANTY**

This product is warranted to be free of defects in material and workmanship for 90 days after purchase. For technical support please call 800-853-8883 ( Monday-Friday; 8am-5pm PST ). Defective product returns should be directed to the place of retail purchase. If this is not possible, all direct returns must include a Return Authorization Number from Oregon Scientific, together with proof of purchase date, your name and address, shipped prepaid to Oregon Scientific Inc, 19861 SW 95th place Tualatin, OREGON 97062, USA.

This warranty does not cover a product subjected to abuse, misuse or accidental damage.

## Free Manuals Download Website

<http://myh66.com>

<http://usermanuals.us>

<http://www.somanuals.com>

<http://www.4manuals.cc>

<http://www.manual-lib.com>

<http://www.404manual.com>

<http://www.luxmanual.com>

<http://aubethermostatmanual.com>

Golf course search by state

<http://golfingnear.com>

Email search by domain

<http://emailbydomain.com>

Auto manuals search

<http://auto.somanuals.com>

TV manuals search

<http://tv.somanuals.com>