

**Atomic Projection Clock
(RM622PA)
USER MANUAL**

CONTENTS

Introduction	2
Product Overview	2
Front View	2
Back View	3
LCD Display	3
Getting Started	4
Batteries	4
AC Adaptor	4
Clock	4
Activating / Deactivating the RF Signal	5
Setting the Clock Manually	5
The Alarm Function	6
Displaying the Alarm Time	6
Setting / Activating the Alarm Time	6

The Snooze Function	6
The Projector Function	6
Adjusting the Projector	7
Choosing Your Time Zone	7
Indoor Temperature	7
Resetting the Unit	7
Safety and Care	7
Warnings	8
Troubleshooting	8
Specifications	8
Main Unit Dimensions	8
Temperature	8
Clock	9
Power	9
About Oregon Scientific	9
FCC Statement	10

INTRODUCTION

Thank you for selecting the Oregon Scientific™ Atomic Projection Clock (RM622PA). This device bundles precise time keeping, alarm, and indoor temperature monitoring features into a single tool you can use from the convenience of your home.

In this box, you will find:

- Atomic Projection Clock
- 3.0V AC/DC adaptor with jack

Keep this manual handy as you use your new product. It contains practical step-by-step instructions, as well as technical specifications and warnings you should know.

PRODUCT OVERVIEW

FRONT VIEW



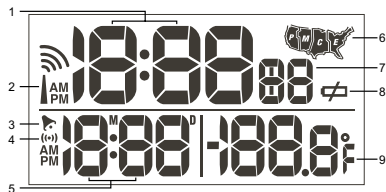
1. **SNOOZE / LIGHT** button
2. **▲ UP** and **▼ DOWN** keys
3. **MODE** button
4. **ZONE** button
5. **🔔 ALARM** button
6. Swivel projection
7. LCD display

BACK VIEW



1. **FOCUS** knob
2. **IMAGE ROTATION** knob
3. Power adaptor socket
4. Battery compartment
5. **PROJECTION ON** switch
6. Table stand
7. **RESET** hole

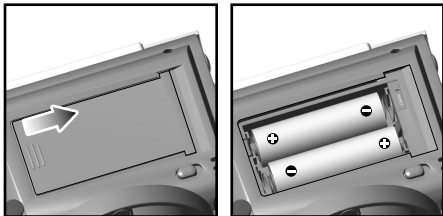
LCD DISPLAY




1. Clock hour and minute
2. Radio frequency (RF) signal reception
3. 📶 Alarm on icon
4. ((.)) Alarm time indicator
5. Alarm time (month / day) or calendar
6. U.S. map for time-zone selection
7. Clock seconds / language
8. 🔋 Low battery indicator
9. Indoor temperature

GETTING STARTED

BATTERIES

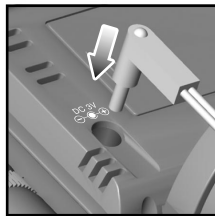


Insert batteries before first use, matching the polarity (+ and -) as shown in the battery compartment. Press **RESET** after each battery change.

 shows on the LCD when battery power is low. Replace batteries as soon as possible to maintain optimal performance.

NOTE For optimal performance, use alkaline batteries with this product and do not use rechargeable batteries.

AC ADAPTOR



The main unit has a 3.0V AC/DC adaptor with jack, which provides continuous clock projection.




CLOCK

The clock automatically synchronizes the current time and date when it is brought within range of the WWVB-60 radio signal (60 kHz) generated from Fort Collins, Colorado. For more information, please visit: <http://www.boulder.nist.gov/timefreq/stations/radioclocks.htm>.

NOTE Initial reception takes 2-10 minutes and begins when you first set up the unit, and also whenever you press **RESET**. Once complete, the reception icon will stop blinking.

ACTIVATING / DEACTIVATING THE RF SIGNAL

1. To activate the RF signal, press and hold ▲ for 2 seconds.
2. To deactivate the RF clock reception, press and hold **ZONE** for 2 seconds.

NOTE The RF signal icon  appears on the LCD when it is activated and disappears when it is deactivated. If the clock cannot receive any signal reception,  appears instead of . See section on "Troubleshooting" for more information.

SETTING THE CLOCK MANUALLY

The 12-hour clock automatically sets itself to the U.S. Atomic Clock - it never needs adjusting for Daylight Saving Time. The top line of the clock display shows hours, minutes and seconds / day-of-the-week. To toggle between seconds and day-of-the-week display, press **MODE**. The second line shows calendar (month and date) / alarm time and indoor temperature.

To adjust the clock settings manually without automatic RF synchronization, remember to deactivate the radio reception first.

Each of clock settings can be adjusted in the following order: hour, minute, year, month, date, and language (E, S, F).

1. Press and hold **MODE** for 2 seconds. The first clock setting, the hour setting, begins flashing.
2. Press ▲ or ▼ to adjust the hour values. To choose the values more quickly, press and hold ▲ or ▼ continuously.
3. To confirm and save the desired hour value, press **MODE**. The next clock setting, the minute setting, automatically begins flashing.
4. Repeat steps 2 and 3 to adjust the clock minute values and the other clock settings accordingly.
5. After adjusting the hour and minute, you may decide to skip adjusting the minute, year and month, and go directly to adjust the date settings. To skip any setting, press **MODE** to navigate through the items until you reach the desired setting.

NOTE When adjusting the date on the second line of the LCD, the corresponding day-of-the-week shown on the LCD's top line will change automatically.

NOTE The time is shown only in 12 hr AM/PM format. 24 hr format is not available in this unit.

NOTE During anytime you are in the middle of adjusting a clock setting manually and is left idle for 1 minute, the clock automatically saves the current setting chosen.

THE ALARM FUNCTION

DISPLAYING THE ALARM TIME

By default, the second line of the unit's LCD screen displays current month and date. To display the alarm time instead, press **↶** once. To show the month and date again, press **MODE**.

SETTING / ACTIVATING THE ALARM TIME

1. Press and hold **↶** for 2 seconds. The alarm hour will flash.
2. Use **▲** or **▼** to set the hour. To choose the setting more quickly, press and hold **▲** or **▼** continuously.
3. Press **↶** to confirm and save the desired hour setting. The minutes will automatically flash.
4. Repeat steps 2 and 3 to set the minutes setting. The alarm time has now been set and is automatically activated. The alarm bell icon **🔔** appears to the left of the alarm time.
5. To deactivate the alarm, press the **↶**. The LCD no longer displays **🔔**.

NOTE The alarm will automatically stop ringing after 2 minute. But after 8 minutes, the alarm will sound once more unless **↶** is pressed.

THE SNOOZE FUNCTION

While the alarm is ringing, press the **SNOOZE / LIGHT** to stop the alarm sound and activate the Snooze function.

When the Snooze function is enabled, the Snooze period will last 8 minutes before the alarm sounds again. **🔔** will flash continuously on the LCD.

NOTE Pressing **SNOOZE / LIGHT** turns on the green LED backlight that lasts for 5 seconds before automatically turning off. The backlight does not turn on when any of the other buttons are pressed.

NOTE The Snooze function will disable if the **↶** button is pressed. The alarm time will remain activated and will ring the following day at the same time unless you press **↶** again to turn off the alarm.

THE PROJECTOR FUNCTION

The projector displays the time via a bright red projection light onto a wall, ceiling, or just about any surface for easy and convenient viewing in a darkened room. The time projected is shown as a single line (HH:MM) in 12-hour AM/PM format.

1. To activate the projection light, press **SNOOZE / LIGHT**. The projector will project the time for 5 seconds before automatically turning off.
2. To activate continuous projection, slide the **PROJECTION ON / OFF** switch to **ON**. Note that this function will not work unless the AC/DC adaptor is used.
3. To deactivate continuous projection, slide the **PROJECTION ON** switch to OFF.

NOTE If the unit is being run on batteries, the **PROJECTION ON / OFF** switch does not need to be on. If you press **SNOOZE / LIGHT**, the projection light will turn on anyway.

ADJUSTING THE PROJECTOR

The RM622PA allows you to adjust the projector so that you are able to view the projection image with more clarity and convenience.

- The projector head can vertically swivel 180° so that you may view the time from different positions.
- The **IMAGE ROTATION** knob allows you to orient the projected image (continuously from 0° to 330° clockwise / counterclockwise) so that you can read the time more conveniently.
- If the projected image is out of focus, use the image-focusing knob to adjust accordingly until the projection is in focus.

CHOOSING YOUR TIME ZONE

The top right of the RM622PA's LCD screen shows a U.S. map with 4 time zones: P (Pacific), M (Mountain), C (Central) or E (Eastern). Choosing your specific time zone makes it convenient to take the projection clock with you and use anywhere during your travels in the country.

To choose your time zone, simply press **ZONE** repeatedly to toggle between the 4 zones and stop at the desired

setting. The time will automatically adjust accordingly.

INDOOR TEMPERATURE

The Atomic Projection Clock monitors and displays indoor temperature. The indoor temperature is shown in Fahrenheit (°F) only. The unit is capable of measuring temperatures within the +23°F to +122°F (-5°C to +50°C) range.

RESETTING THE UNIT

The **RESET** hole is located in the main unit battery compartment. Press **RESET** when you change the batteries and whenever performance is not behaving as expected (for example, unable to establish radio frequency link). The clock will reset to its original default values.

SAFETY AND CARE

Clean the product with a slightly damp cloth and alcohol-free, mild detergent. Avoid dropping the product or placing it in a high-traffic location.

WARNINGS

This product is designed to give you years of service if handled properly. Oregon Scientific will not be responsible for any deviations in the usage of the device from those specified in the user instructions or any unapproved alterations or repairs of the product. Observe the following guidelines:

- Never immerse the product in water. This can cause electrical shock and damage the product.
- Do not subject the main unit to extreme force, shock, or fluctuations in temperature or humidity.
- Do not tamper with the internal components.
- Do not mix new and old batteries or batteries of different types.
- Do not use rechargeable batteries with this product.
- Remove the batteries if storing this product for a long period of time.
- Do not scratch the LCD display.

NOTE The technical specifications of this product and contents of this user manual are subject to change without notice. Images not drawn to scale.

TROUBLESHOOTING

PROBLEM	SYMPTOM	REMEDY
Calendar	Illegible month / date	Change language
Clock	Cannot adjust clock	Disable atomic clock
	Cannot auto-synchronize date and time	1. Adjust batteries 2. Press RESET 3. Manually activate clock feature
Temp	Shows "LLL" or "HHH"	Temperature is out-of-range

SPECIFICATIONS

MAIN UNIT DIMENSIONS

Length x Width x Height: 5.27 x 2.04 x 3.23 in
(134 x 52 x 82 mm)

Weight: 5.71 oz (162 g)
without battery

TEMPERATURE

Unit: °F

Indoor Range: +23°F to +122°F
(-5°C to +50°C)

Resolution:	0.2°F (0.1°C)
CLOCK	
RF Clock:	Auto or manual (disabled)
Clock display:	HH:MM:SS
Hour format:	12hr AM/PM
Calendar:	MM/DD; weekday in 3 languages (English, Spanish, French)
Alarm:	Single alarm with 2-minute crescendo

POWER	
Main unit batteries:	2 x AA (UM-3) 1.5V

ABOUT OREGON SCIENTIFIC

Visit our website (www.oregonscientific.com) to learn more about Oregon Scientific products such as digital cameras; MP3 players; children's electronic learning products and games; projection clocks; health and fitness gear; weather stations; and digital and conference phones. The website also includes contact information for our customer care department in case you need to reach us, as well as frequently asked questions and customer downloads.

We hope you will find all the information you need on our website, however if you'd like to contact the Oregon Scientific Customer Care department directly, please visit www2.oregonscientific.com/service/support OR call 949-608-2848 in the US. For international enquiries, please visit www2.oregonscientific.com/about/international/default.asp.

FCC STATEMENT

This device complies with Part 15 of the FCC Rules. Operation is subject to the following two conditions: (1) This device may not cause harmful interference, and (2) This device must accept any interference received, including interference that may cause undesired operation.

WARNING Changes or modifications to this unit not expressly approved by the party responsible for compliance could void the user's authority to operate the equipment.

NOTE This equipment has been tested and found to comply with the limits for a Class B digital device, pursuant to Part 15 of the FCC Rules. These limits are designed to provide reasonable protection against harmful interference in a residential installation.

This equipment generates, uses and can radiate radio frequency energy and, if not installed and used in accordance with the instructions, may cause harmful interference to radio communications.

However, there is no guarantee that interference will not occur in a particular installation. If this equipment does cause harmful interference to radio or television reception, which can be determined by turning the equipment off and on, the user is encouraged to try to correct the interference by one or more of the following measures:

- Reorient or relocate the receiving antenna.
- Increase the separation between the equipment and receiver.
- Connect the equipment into an outlet on a circuit different from that to which the receiver is connected.
- Consult the dealer or an experienced radio / TV technician for help.

© 2004 Oregon Scientific. All rights reserved.

Download from Www.Somanuals.com. All Manuals Search And Download. P/N: 086-003592-018



**Atomic Projection Clock
Model: RM622PA**

User Manual

Free Manuals Download Website

<http://myh66.com>

<http://usermanuals.us>

<http://www.somanuals.com>

<http://www.4manuals.cc>

<http://www.manual-lib.com>

<http://www.404manual.com>

<http://www.luxmanual.com>

<http://aubethermostatmanual.com>

Golf course search by state

<http://golfingnear.com>

Email search by domain

<http://emailbydomain.com>

Auto manuals search

<http://auto.somanuals.com>

TV manuals search

<http://tv.somanuals.com>